

DISTRICT I  
1625 N. French Dr., Hobbs, NM 88240  
Phone: (505) 393-6161 Fax: (505) 393-0720

DISTRICT II  
811 S. First St., Artesia, NM 88210  
Phone: (505) 748-1283 Fax: (505) 748-9720

DISTRICT III  
1000 Rio Brazos Road, Aztec, NM 87416  
Phone: (505) 334-6178 Fax: (505) 334-6170

DISTRICT IV  
1220 S. St. Francis Dr., Santa Fe, NM 87505  
Phone: (505) 476-3460 Fax: (505) 476-3462

State of New Mexico  
Energy, Minerals & Natural Resources Department

OIL CONSERVATION DIVISION

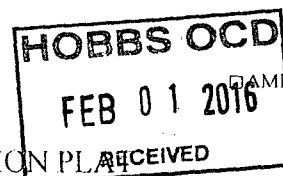
1220 South St. Francis Dr.  
Santa Fe, New Mexico 87505

**COPY**

Form C-102

Revised August 1, 2011

Submit one copy to appropriate  
District Office



WELL LOCATION AND ACREAGE DEDICATION PLAT

API Number <b>30-025-43079</b>	Pool Code <b>97838</b>	Pool Name <b>Jennings, Upper Bone Spring Shale</b>
Property Code <b>305301</b>	Property Name <b>MESA 8105 JV-P</b>	Well Number <b>9H</b>
OGRID No. <b>260297</b>	Operator Name <b>BTA OIL PRODUCERS, LLC</b>	Elevation <b>3282'</b>

Surface Location									
UL or lot No.	Section	Township	Range	Lot Idn	Feet from the	North/South line	Feet from the	East/West line	County
D	12	26-S	32-E		330	NORTH	470	WEST	LEA

Bottom Hole Location If Different From Surface									
UL or lot No.	Section	Township	Range	Lot Idn	Feet from the	North/South line	Feet from the	East/West line	County
M	12	26-S	32-E		230	SOUTH	430	WEST	LEA
Dedicated Acres <b>160</b>		Joint or Infill		Consolidation Code		Order No.			

NO ALLOWABLE WILL BE ASSIGNED TO THIS COMPLETION UNTIL ALL INTERESTS HAVE BEEN CONSOLIDATED OR A NON-STANDARD UNIT HAS BEEN APPROVED BY THE DIVISION

	<p><b>GEODETIC COORDINATES</b> NAD 27 NME</p> <p><b>SURFACE LOCATION</b> Y = 387700.7 N X = 716333.6 E</p> <p>LAT. = 32.063980° N LONG. = 103.634993° W</p>	<p><b>GEODETIC COORDINATES</b> NAD 83 NME</p> <p><b>SURFACE LOCATION</b> Y = 387758.1 N X = 757520.4 E</p> <p>LAT. = 32.064105° N LONG. = 103.635464° W</p>	<p><b>OPERATOR CERTIFICATION</b></p> <p>I hereby certify that the information herein is true and complete to the best of my knowledge and belief, and that this organization either owns a working interest or unleased mineral interest in the land including the proposed bottom hole location or has a right to drill this well at this location pursuant to a contract with an owner of such mineral or working interest, or to a voluntary pooling agreement or a compulsory pooling order heretofore entered by the division.</p> <p><i>Kayla McConnell</i> 4/16/2015 Signature Date</p> <p>Kayla McConnell Printed Name</p> <p>kmcconnell@btaoil.com E-mail Address</p>
	<p><b>CORNER COORDINATES TABLE</b> NAD 27 NME</p> <p>A - Y = 388025.8 N, X = 715861.6 E B - Y = 388039.4 N, X = 717192.6 E C - Y = 382694.3 N, X = 717222.3 E D - Y = 382677.2 N, X = 715890.2 E</p>	<p><b>CORNER COORDINATES TABLE</b> NAD 83 NME</p> <p>A - Y = 388083.2 N, X = 757048.4 E B - Y = 388096.8 N, X = 758379.4 E C - Y = 382751.6 N, X = 758409.4 E D - Y = 382734.5 N, X = 757077.2 E</p>	
	<p><b>NAD 27 NME</b> <b>BOTTOM HOLE LOCATION</b> Y = 382912.6 N X = 716319.0 E LAT. = 32.050819° N LONG. = 103.635140° W</p>	<p><b>NAD 83 NME</b> <b>BOTTOM HOLE LOCATION</b> Y = 382969.9 N X = 757506.0 E LAT. = 32.050944° N LONG. = 103.635610° W</p>	

**SURVEYOR CERTIFICATION**

I hereby certify that the well location shown on this plat was plotted from field notes of actual surveys made by me or under my supervision, and that the same is true and correct to the best of my belief.

AUGUST 19, 2014

Date of Survey

Signature & Seal of Professional Surveyor:

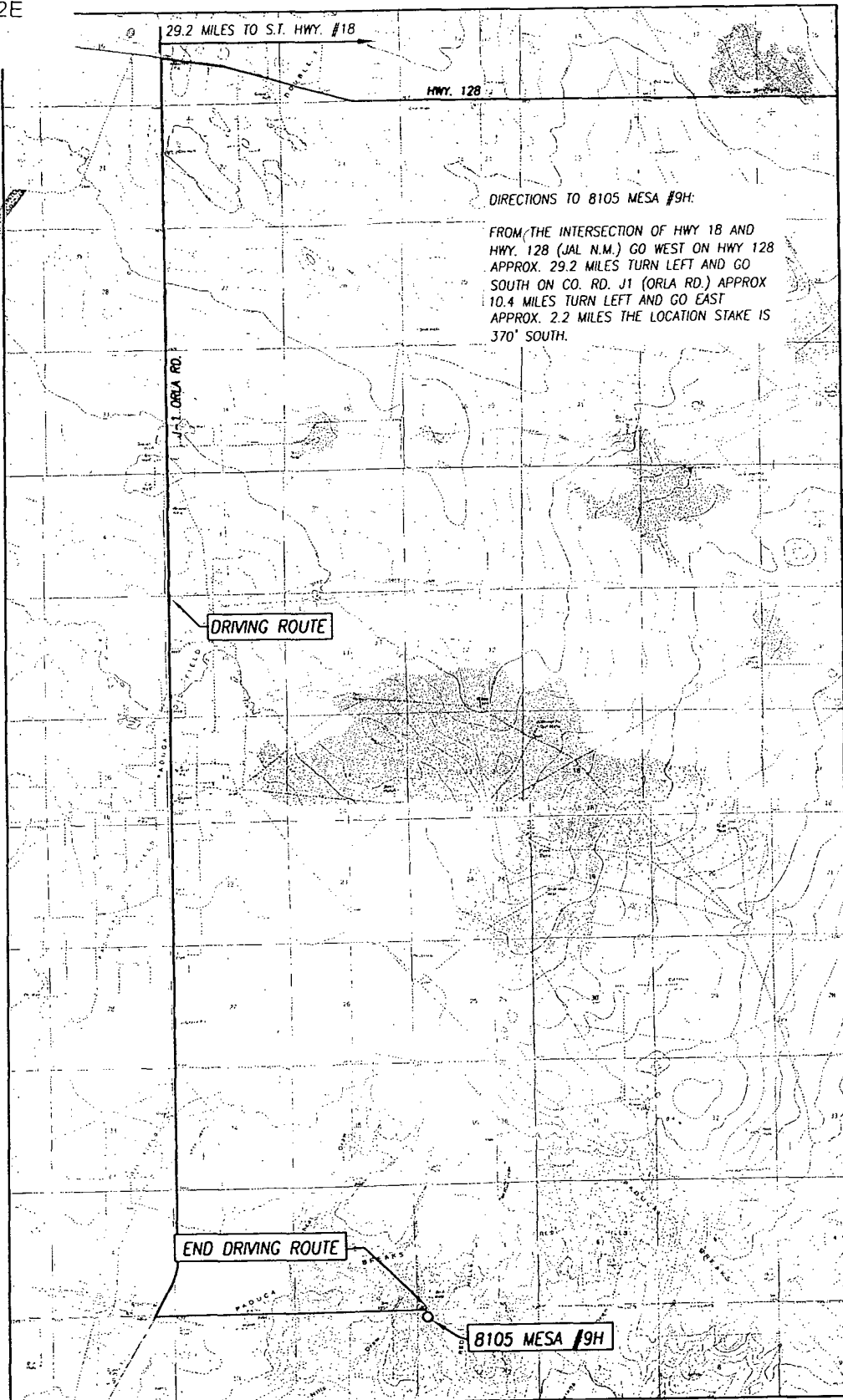
Certificate Number: 3239  
Ronald J. Eidson 12641  
LSL REL. WHO 10-1-10 JWSC W.O. 14.13.1092

FEB 19 2016

Attachment to APD  
BTA Oil Producers, LLC  
Mesa 8105 JV-P #9H  
Sec 12, T26S, R32E  
Lea County, NM

## LOCATION VERIFICATION MAP

COPY



SEC. 12 TWP. 26-S RGE. 32-E  
COUNTY LEA STATE NEW MEXICO  
DESCRIPTION 330' FNL & 470' FWL  
ELEVATION 3282'  
OPERATOR BTA OIL PRODUCERS, LLC  
LEASE 8105 MESA  
U.S.G.S. TOPOGRAPHIC MAP  
PADUCA BREAKS WEST, N.M. SURVEY N.M.P.M.

SCALE: 1" = 5280'

CONTOUR INTERVAL:  
PADUCA BREAKS WEST, N.M. - 10'  
PADUCA BREAKS NW, N.M. - 10'

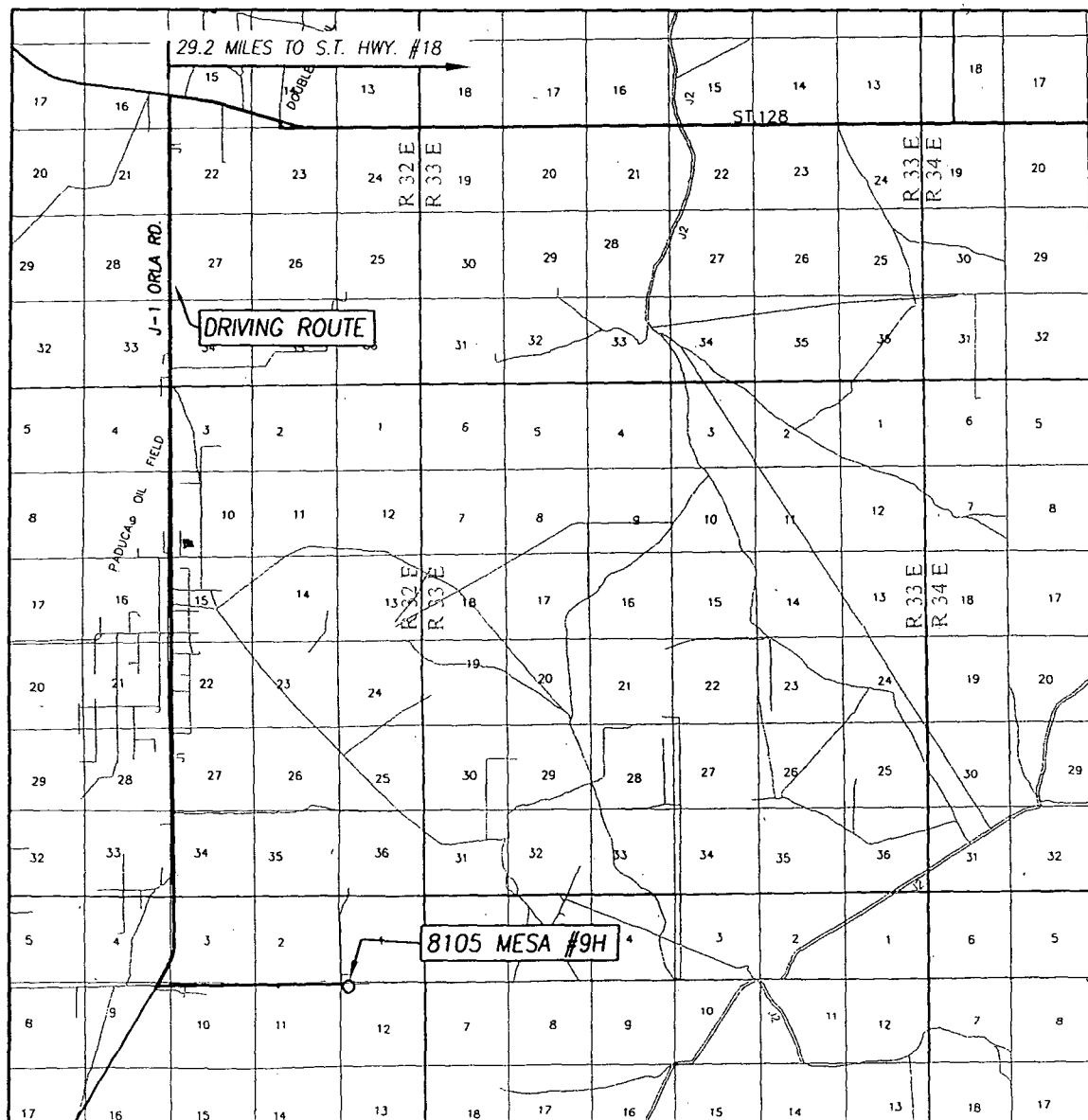


PROVIDING SURVEYING SERVICES  
SINCE 1946  
**JOHN WEST SURVEYING COMPANY**  
412 N. DAL PASO HOBBS, N.M. 88240  
(575) 393-3117 www.jwsc.biz  
TBPLS# 10021000

# COPY

## VICINITY MAP

Attachment to APD  
BTA Oil Producers, LLC  
Mesa 8105 JV-P #9H  
Sec 12, T26S, R32E  
Lea County, NM



SCALE: 1" = 2 MILES  
DRIVING ROUTE: SEE LOCATION VERIFICATION MAP

SEC. 12 TWP. 26-S RGE. 32-E

SURVEY N.M.P.M.

COUNTY LEA STATE NEW MEXICO

DESCRIPTION 330' FNL & 470' FWL

ELEVATION 3282'

OPERATOR BTA OIL PRODUCERS, LLC

LEASE 8105 MESA

PROVIDING SURVEYING SERVICES  
SINCE 1946  
**JOHN WEST SURVEYING COMPANY**  
412 N. DAL PASO HOBBS, N.M. 88240  
(575) 393-3117 [www.jwsc.biz](http://www.jwsc.biz)  
TBPLS# 10021000

COPY

BTA Oil Producers, LLC  
Mesa 8105 JV-P #9H  
1 Mile Radius Map  
Sec 12, T26S, R32E  
Lea County, NM



# BTA OIL PRODUCERS, LLC

## 8105 JV-P Mesa #9H - 1 Mile Radius Map

SHL: 330'FNL & 470'FWL Sec. 12, T26S, R32E

BHL: 230'FSL & 430'FWL Sec. 12, T26S, R32E

Lea Co. New Mexico

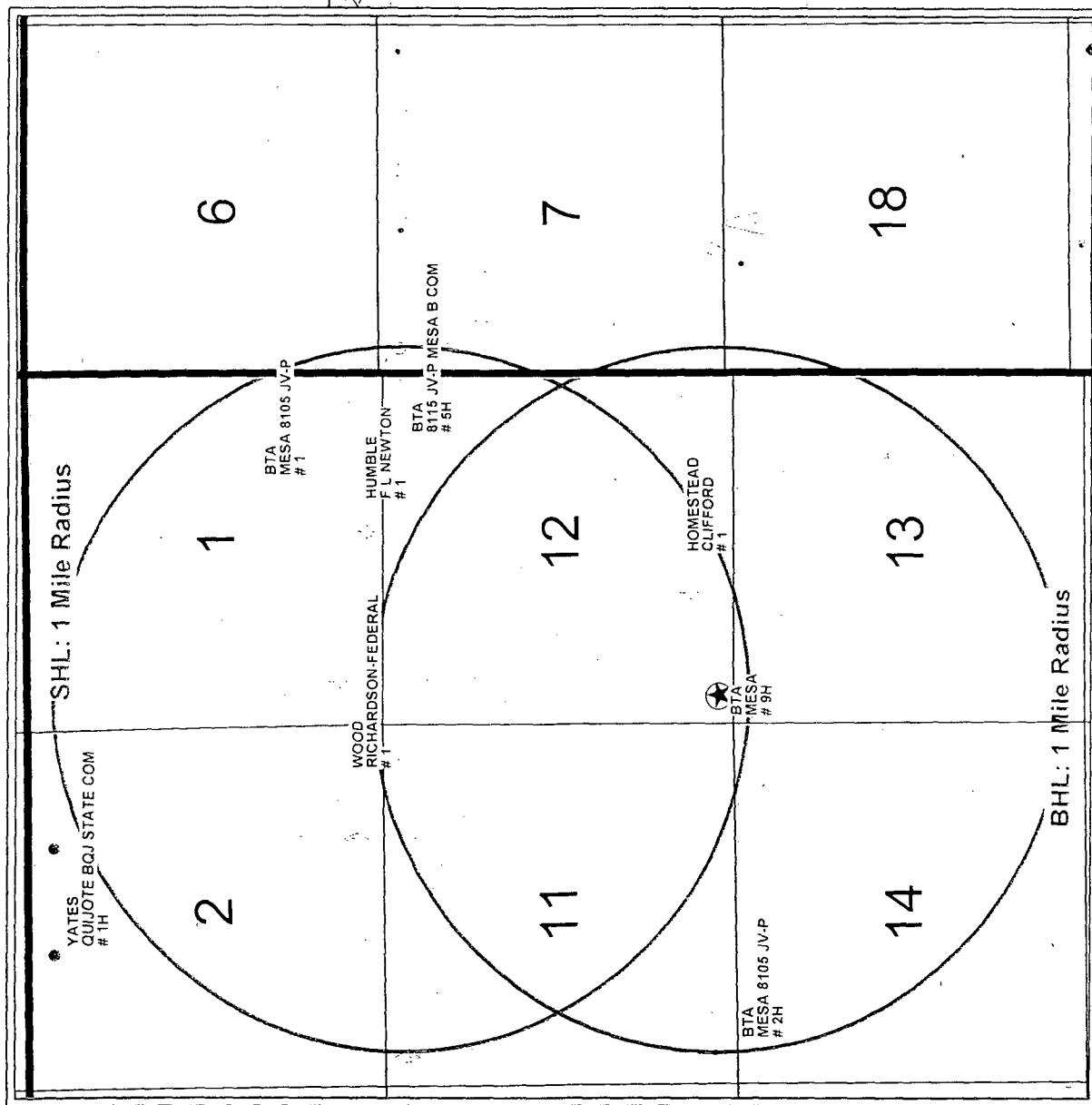
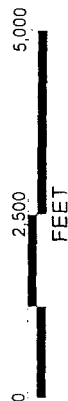
- WELL SYMBOLS**
- ★ Proposed Location
  - Location Only
  - Drilling Well
  - Drilled, Waiting on Completion
  - Oil Well
  - Gas Well
  - Dry Hole
  - Pilot Hole

### REMARKS

8105 JV-P Mesa #9H Bottom Hole Location  
Highlighted in Yellow

Only Wells Inside a Mile Radius of Surface &  
Bottom Hole Locations Labeled

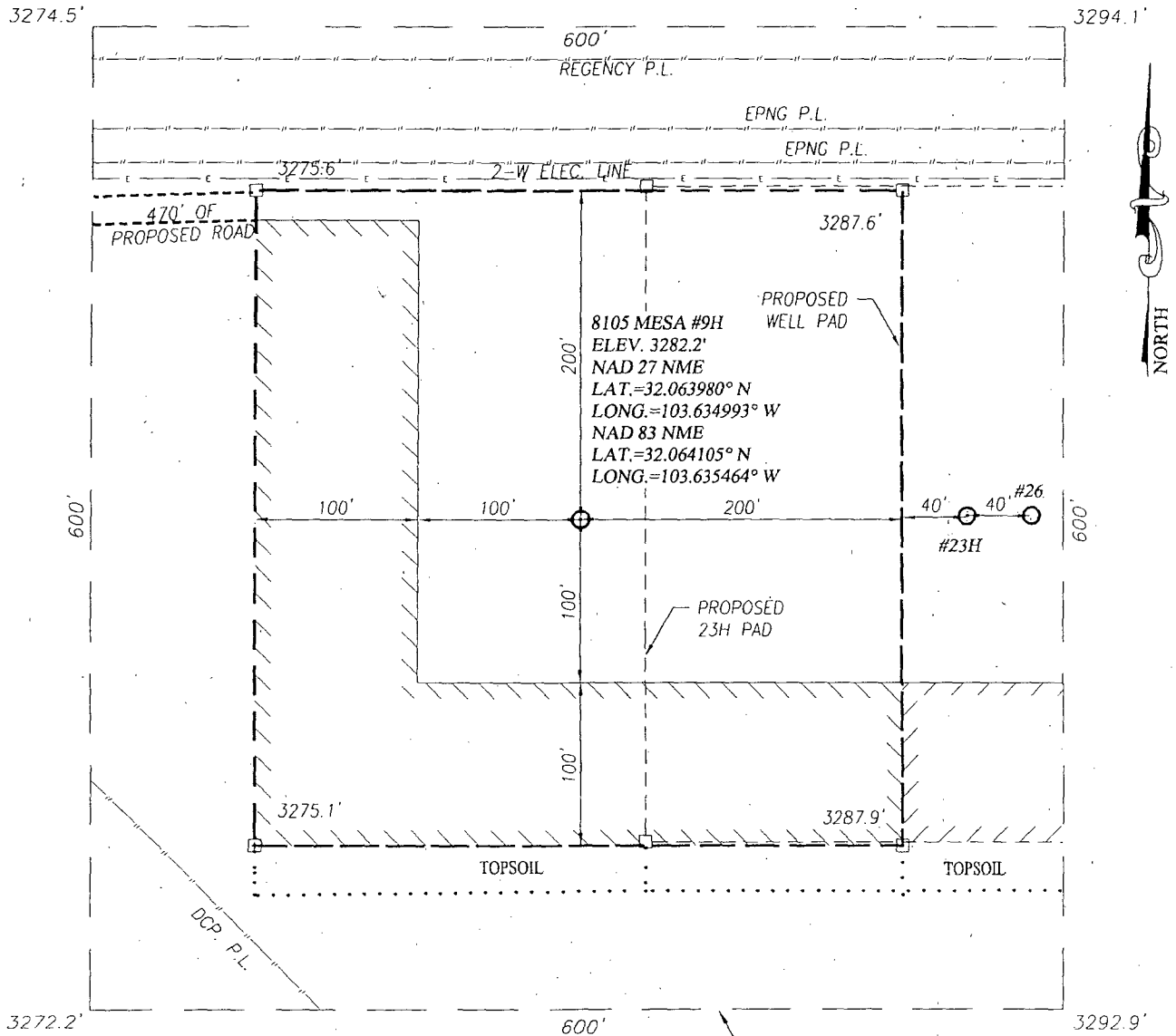
By: JHB



BTA Oil Producers, LLC  
Mesa 8105 JV-P #9H  
Location Plat - Interim Reclamation

**COPY**

Sec 12, T26S, R32E  
Lea County, NM

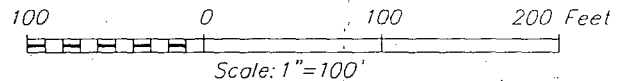


NOTE:  
1) SEE "LOCATION VERIFICATION MAP"  
FOR PROPOSED ROAD LOCATION.

ARCHEOLOGICAL SURVEY BOUNDARY  
////// DENOTES AREA TO BE RECLAIMED

DIRECTIONS TO 8105 MESA #9H:

FROM THE INTERSECTION OF HWY 18 AND HWY. 128 (JAL N.M.)  
GO WEST ON HWY 128 APPROX. 29.2 MILES TURN LEFT AND  
GO SOUTH ON CO. RD. J1 (ORLA RD.) APPROX 10.4 MILES  
TURN LEFT AND GO EAST APPROX. 2.2 MILES THE LOCATION  
STAKE IS 370' SOUTH.



**BTA OIL PRODUCERS, LLC**

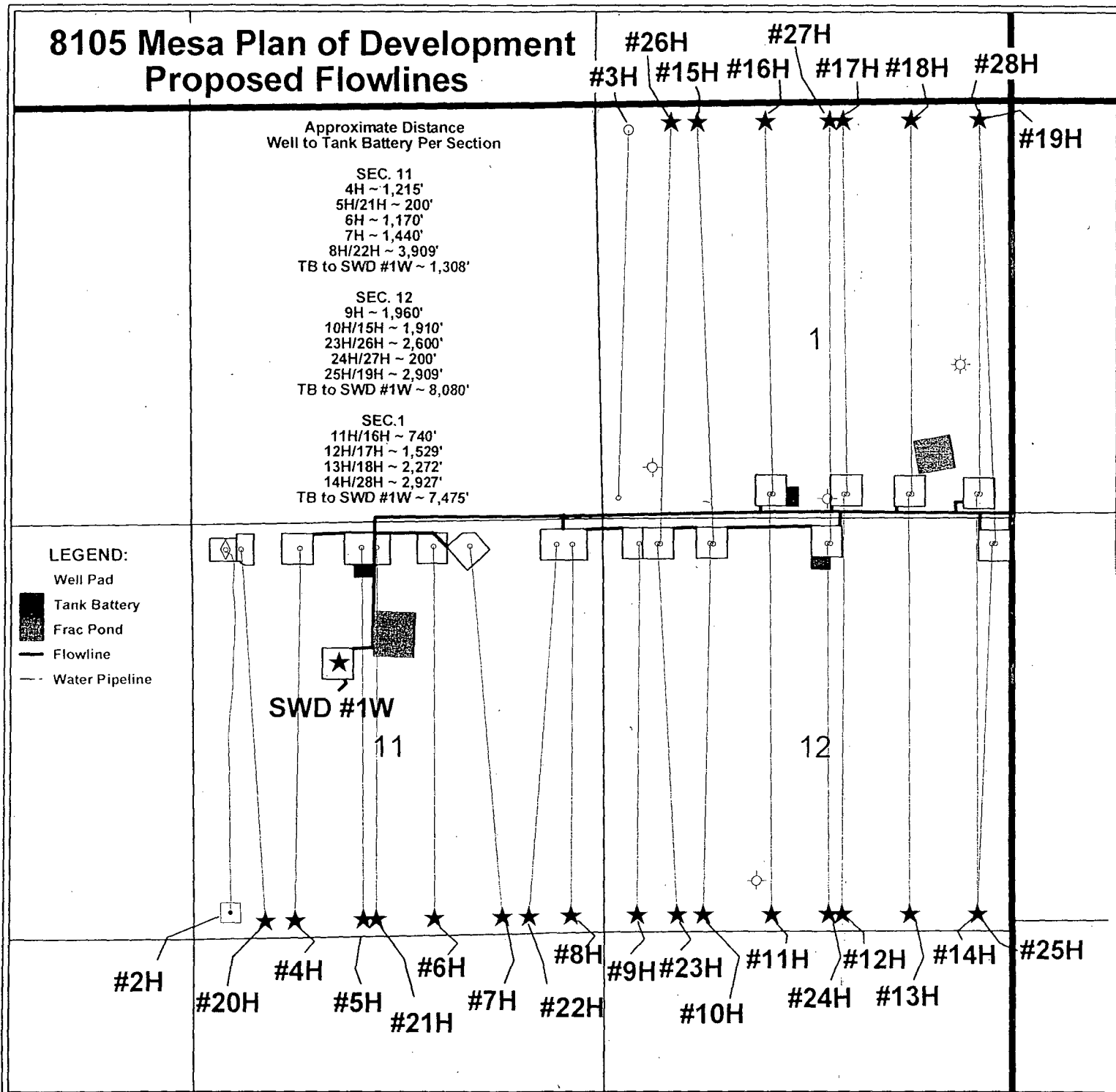
**8105 MESA #9H WELL**  
LOCATED 330 FEET FROM THE NORTH LINE  
AND 470 FEET FROM THE WEST LINE OF SECTION 12,  
TOWNSHIP 26 SOUTH, RANGE 32 EAST, N.M.P.M.,  
LEA COUNTY, NEW MEXICO



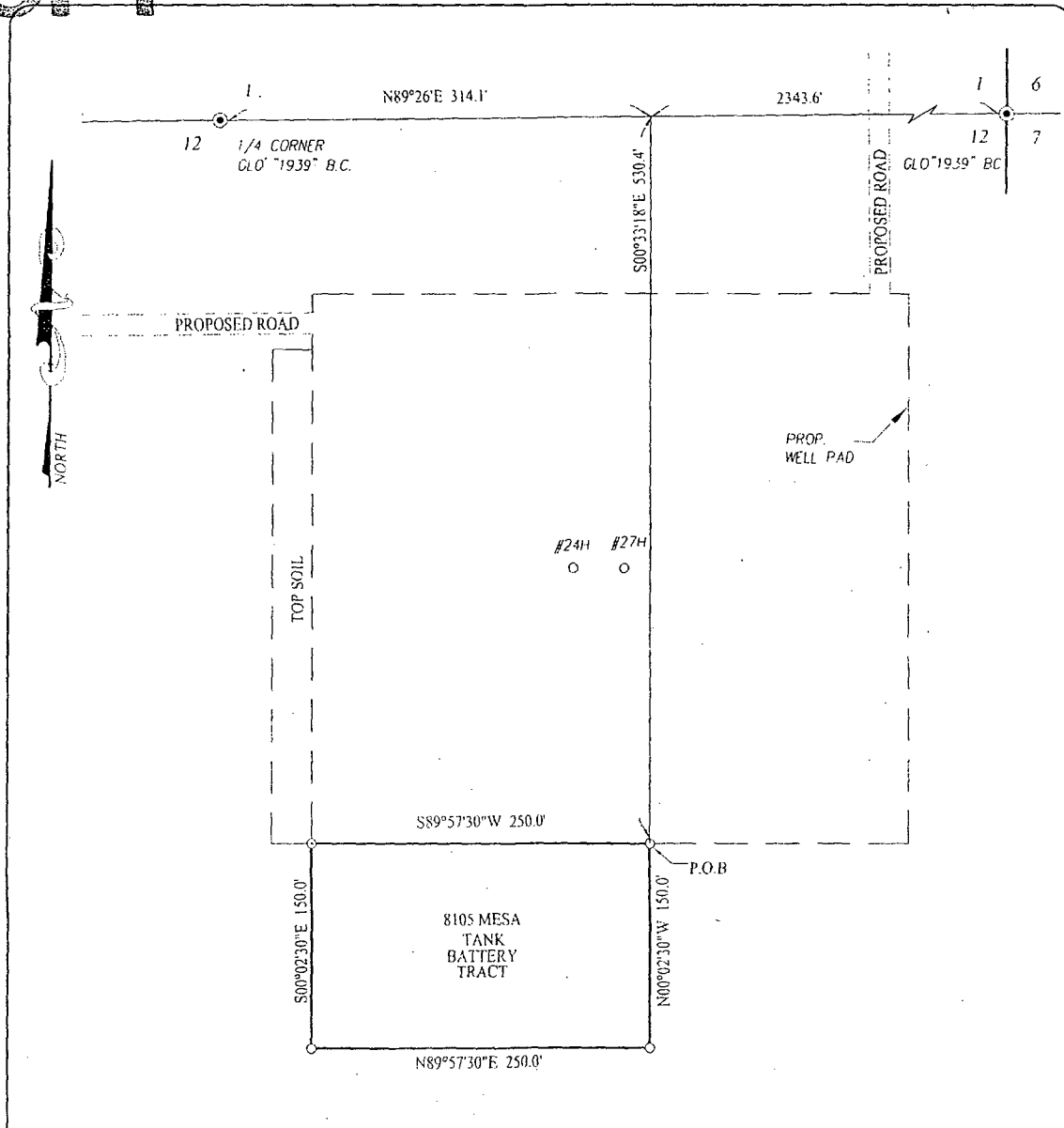
PROVIDING SURVEYING SERVICES  
SINCE 1946  
**JOHN WEST SURVEYING COMPANY**  
412 N. DAL PASO HOBBS, N.M. 88240  
(575) 393-3117 www.jwsc.biz  
TBPLS# 10021000

Survey Date: 8/19/14	CAD Date: 11/21/14	Drawn By: LSL
W.O. No.: 14131092	Rev:	Rel. W.O.: 14110817
		Sheet 1 of 1

**COPY**



COPY



Attachment to APD  
BTA Oil Producers, LLC  
Mesa 8105 JV-P #9H  
Sec 12, T26S, R32E  
Lea County, NM

**DESCRIPTION:**

A TRACT SITUATED IN THE NORTHEAST QUARTER OF SECTION 12, TOWNSHIP 26 SOUTH, RANGE 32 EAST, N.M.P.M., LEA COUNTY, NEW MEXICO AND BEING MORE PARTICULARLY DESCRIBED AS FOLLOWS:

BEGINNING AT THE NORTHEAST CORNER WHICH LIES N89°26'42"E 314.1 FEET AND S00°33'18"E 530.4 FEET FROM THE NORTH 1/4 CORNER; THEN S89°57'30"W 250.0 FEET; THEN S00°02'30"E 150.0 FEET; THEN N89°87'30"E 250.0 FEET; THEN N00°02'30"W 150.0 FEET TO THE POINT OF BEGINNING AND CONTAINING 0.86 ACRES MORE OR LESS.

**NOTE:**

BEARINGS SHOWN HEREON ARE MERCATOR GRID AND CONFORM TO THE NEW MEXICO COORDINATE SYSTEM "NEW MEXICO EAST ZONE" NORTH AMERICAN DATUM 1983. DISTANCES ARE SURFACE VALUES.

I, RONALD J. EIDSON, NEW MEXICO PROFESSIONAL SURVEYOR No. 3239, DO HEREBY CERTIFY THAT THIS SURVEY PLAN AND THE ACTUAL SURVEY ON THE GROUND UPON WHICH IT IS BASED WERE PERFORMED BY ME OR UNDER MY DIRECT SUPERVISION; THAT I AM RESPONSIBLE FOR THIS SURVEY; THAT THIS SURVEY MEETS THE MINIMUM STANDARDS FOR SURVEYING IN NEW MEXICO; AND THAT IT IS TRUE AND CORRECT TO THE BEST OF MY KNOWLEDGE AND BELIEF.

RONALD J. EIDSON

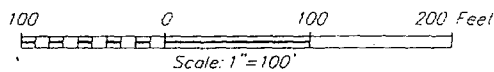
DATE: 11/19/14



PROVIDING SURVEYING SERVICES  
SINCE 1946  
**JOHN WEST SURVEYING COMPANY**  
412 N. DAL PASO HOBBS, N.M. 88240  
(575) 393-3117 www.jwsc.biz  
TBPLS# 10021000

**LEGEND**

● DENOTES FOUND CORNER AS NOTED

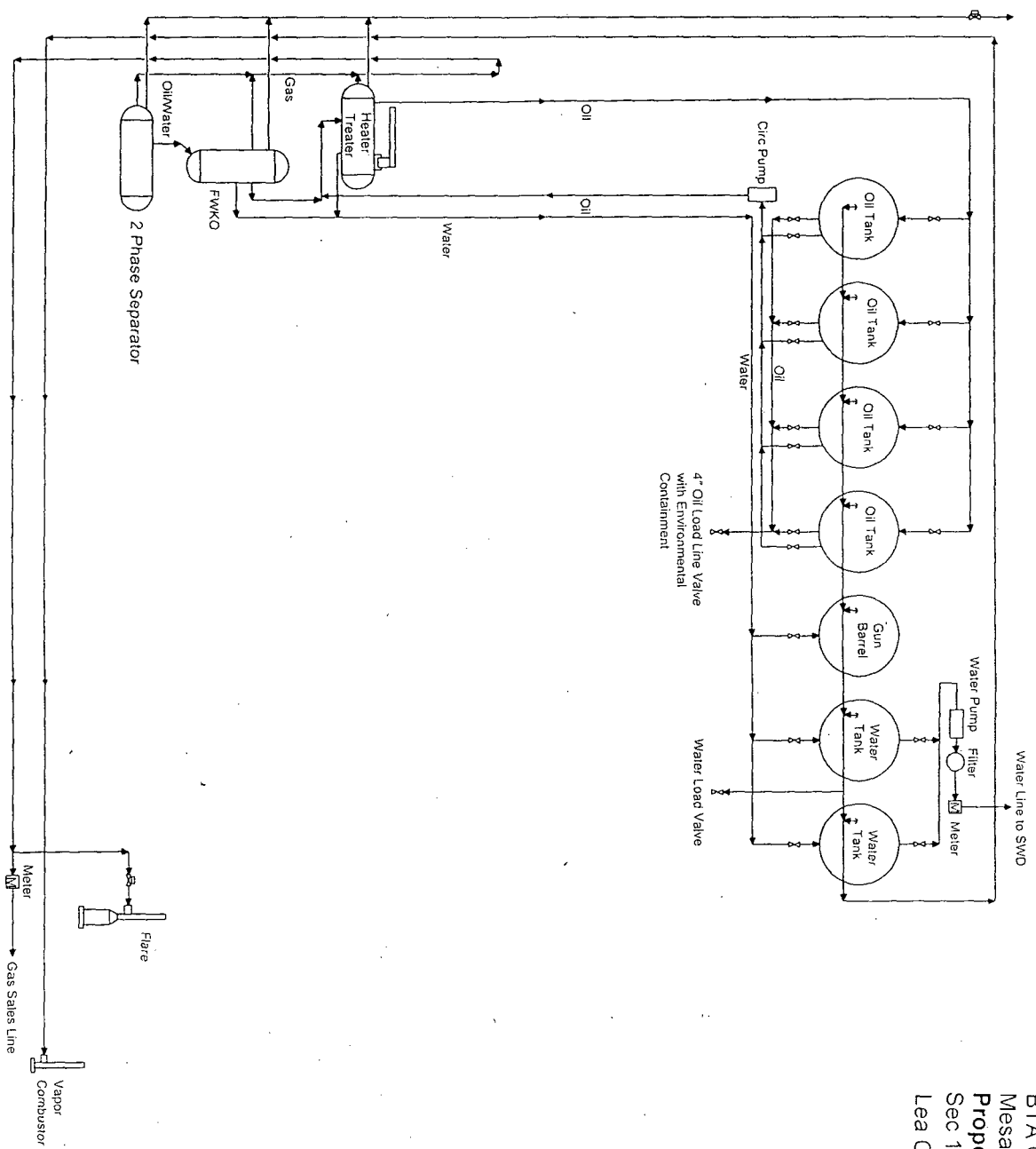


**BTA OIL PRODUCERS, LLC**

SURVEY FOR A TANK BATTERY TRACT  
SITUATED IN THE NE/4 OF SECTION 12,  
TOWNSHIP 26 SOUTH, RANGE 32 EAST, N.M.P.M.  
LEA COUNTY, NEW MEXICO

Survey Date: 10/20/14	CAD Date: 11/19/14	Drawn By: LSL
W.O. No.: 14111114	Rev.	Rel. W.O.
		Sheet 1 of 1

COPY



BTA Oil Producers, LLC  
Mesa 8105 JV-P #9H  
Proposed Central Tank Battery  
Sec 12, T26S, R32E  
Lea County, NM

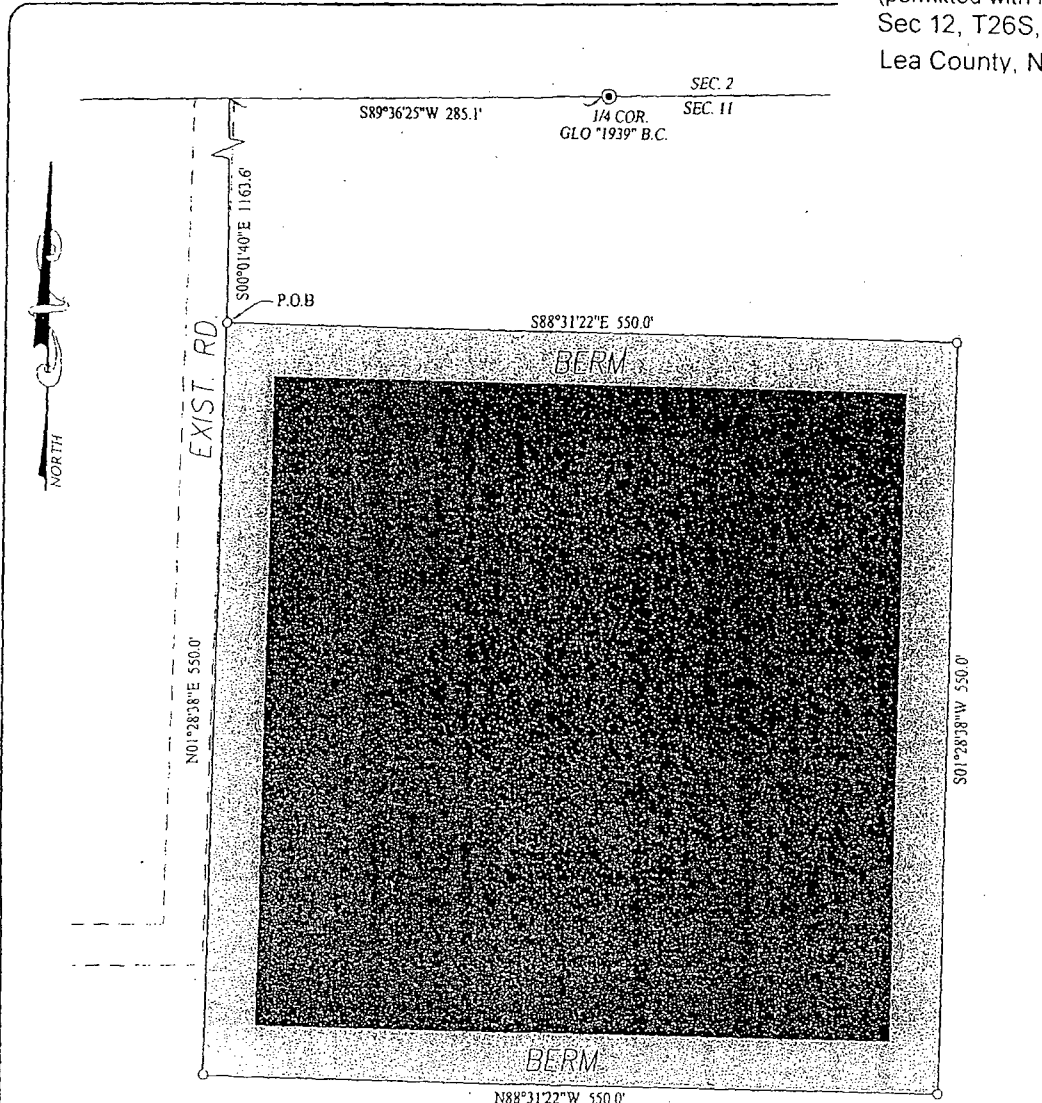
NOT TO SCALE

**BTA Oil Producers, LLC**  
Mesa 8105 JV-P  
-Proposed-  
Central Tank Battery  
Section 12, T26S-R32E  
Lea County, NM



COPY

BTA Oil Producers, LLC  
Mesa-8105-JV-P-#9H  
Frac Pond  
(permitted with Mesa 8105 JV-P #4H)  
Sec 12, T26S, R32E  
Lea County, NM



**DESCRIPTION:**

A TRACT FOR A FRAC POND SITUATED IN THE NORTHWEST QUARTER OF SECTION 11, TOWNSHIP 26 SOUTH, RANGE 32 EAST, N.M.P.M., EDDY COUNTY, NEW MEXICO AND BEING MORE PARTICULARLY DESCRIBED AS FOLLOWS:

BEGINNING AT THE NORTHWEST CORNER WHICH LIES S89°36'25\"W 285.1 FEET AND S00°01'40\"E 1163.6 FEET FROM THE NORTH 1/4 CORNER; THEN S88°31'22\"E 550.0 FEET; THEN S01°28'38\"W 550.0 FEET; THEN N88°31'22\"W 550.0 FEET; THEN N01°28'38\"E 550.0 FEET TO THE POINT OF BEGINNING AND CONTAINING 6.94 ACRES MORE OR LESS.

**NOTE**

BEARINGS SHOWN HEREON ARE MERCATOR GRID AND CONFORM TO THE NEW MEXICO COORDINATE SYSTEM "NEW MEXICO EAST ZONE" NORTH AMERICAN DATUM 1983. DISTANCES ARE SURFACE VALUES.

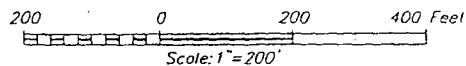
I, RONALD J. EIDSON, NEW MEXICO PROFESSIONAL SURVEYOR No. 3239, DO HEREBY CERTIFY THAT THIS SURVEY PLAT AND THE ACTUAL SURVEY ON THE GROUND UPON WHICH IT IS BASED WERE PERFORMED BY ME OR UNDER MY DIRECT SUPERVISION THAT I AM RESPONSIBLE FOR THIS SURVEY; THAT THIS SURVEY MEETS THE MINIMUM STANDARDS FOR SURVEYING IN NEW MEXICO; AND THAT IT IS TRUE AND CORRECT TO THE BEST OF MY KNOWLEDGE AND BELIEF.

RONALD J. EIDSON

DATE: 11/10/14

**LEGEND**

⊙ DENOTES FOUND CORNER AS NOTED



**BTA OIL PRODUCERS, LLC**

SURVEY FOR A FRAC POND TRACT  
SITUATED IN THE NW/4 OF SECTION 11,  
TOWNSHIP 26 SOUTH, RANGE 32 EAST, N.M.P.M.  
EDDY COUNTY, NEW MEXICO

Survey Date: 10/16/14	CAD Date: 11/10/14	Drawn By: LSL
W.O. No.: 14111127	Rev.:	Rel. W.O.:

Sheet 1 of 1



PROVIDING SURVEYING SERVICES  
SINCE 1946  
**JOHN WEST SURVEYING COMPANY**  
412 N. DAL PASO HOBBS N.M. 88240  
(575) 393-3117 www.jwsurvey.com  
TBPLS# 10021000

© DRAFTING