

**DISTRICT II**  
1301 W. Grand Avenue, Artesia, NM 88210

OIL CONSERVATION DIVISION  
1220 South St. Frances Dr.  
Santa Fe, NM 87505

Submit to Agency  
**HOBBS OCD**

JAN 28 2016

RECEIVED

State Lease - 4 Copies  
Fee Lease - 3 Copies

DISTRICT III  
1000 Rio Brazos Rd., Artec, NM 87410

**DISTRICT IV**  
1220 S. St. Francis Dr., Santa Fe, NM 87505

## AMENDED REPORT

## WELL LOCATION AND ACREAGE DEDICATION PLAT

API Number		Pool Code	Pool Name
Property Code	Property Name MAXWELL 24		Well Number 1-H
OGRID No.	Operator Name NEMO FUND I, LLC		Elevation 3979'

### Surface Location

UL or lot No.	Section	Township	Range	Lot Idn	Feet from the	North/South line	Feet from the	East/West line	County
D	24	10-S	36-E		10	NORTH	660	WEST	LEA

## Bottom Hole Location If Different From Surface

UL or lot No.	Section	Township	Range	Lot Idn	Feet from the	North/South line	Feet from the	East/West line	County
M	24	10-S	36-E		330	SOUTH	660	WEST	LEA

Dedicated Acres	Joint or Infill	Consolidation Code	Order No.

NO ALLOWABLE WILL BE ASSIGNED TO THIS COMPLETION UNTIL ALL INTERESTS HAVE BEEN CONSOLIDATED OR A NON-STANDARD UNIT HAS BEEN APPROVED BY THE DIVISION

### OPERATOR CERTIFICATION

I hereby certify that the information contained herein is true and complete to the best of my knowledge and belief, and that this organization either owns a working interest or unleased mineral interest in the land including the proposed bottom hole location or has a right to drill this well at this location pursuant to a contract with an owner of such a mineral or working interest, or to a voluntary pooling agreement or a compulsory pooling order heretofore entered by the division.

Dennis Jones 1-26-16  
Signature Date

Denise Jones  
Printed Name

### SURVEYOR CERTIFICATION

I hereby certify that the well location shown on this plat was plotted from field notes of actual surveys made by me or under my supervision and that the same is true and correct to the best of my belief.

December 12, 2014

Date of Survey

Signature & Seal of Professional Surveyor

W.O. Num. 2014-1682

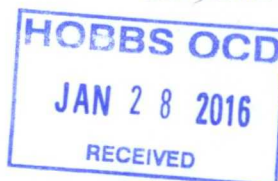
Certificate No. LINDSAY GYGAKI 23263

FEB 19 2016

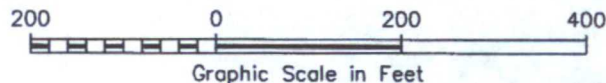
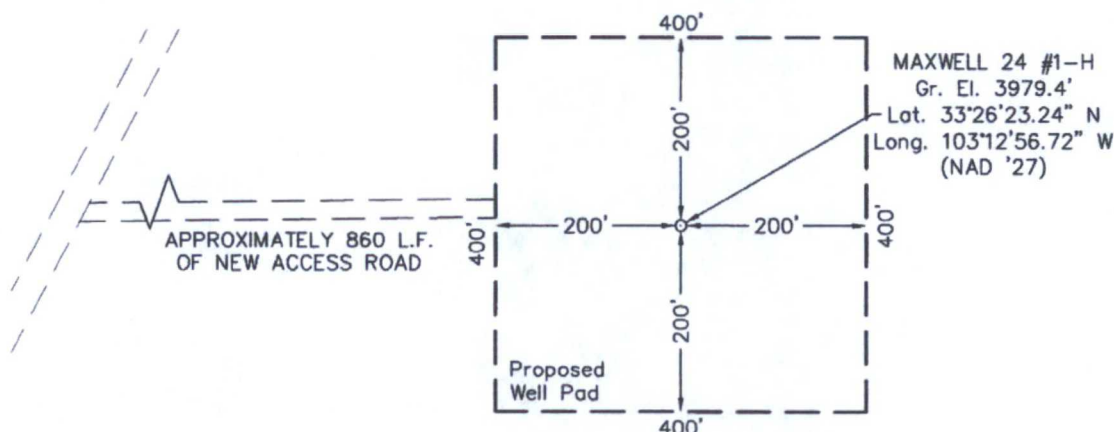
# SECTION 24, TOWNSHIP 10 SOUTH, RANGE 36 EAST, N.M.P.M.

LEA COUNTY

NEW MEXICO



L-2014-1682-B



## DRIVING DIRECTIONS

FROM THE INTERSECTION OF U.S. HIGHWAY 380 AND HIGHWAY 206 IN TATUM, NEW MEXICO, GO EAST ON U.S. HIGHWAY 380 4.0 MILES TO HIGHWAY 125 / BLEDSOE HWY. GO NORTH AND NORTHEAST 10.3 MILES TO A LEASE ROAD ON THE WEST (LEFT) SIDE OF THE ROAD, THEN GO WEST ON LEASE ROAD 1.0 MILE, NORTH 2.0 MILES, AND NORTHEAST 1.2 MILES TO A POINT APPROXIMATELY 1100 FEET WEST OF THE PROPOSED LOCATION.

## NEMO FUND I, LLC

### MAXWELL 24 #1-H

Located 10' FNL & 660' FWL, Section 24  
Township 10 South, Range 36 East, N.M.P.M.  
Lea County, New Mexico



SURVEYORS - ENGINEERS - PLANNERS  
FIRM REGISTRATION NUMBER: 100682-00  
110 W. LOUISIANA AVE., SUITE 110  
MIDLAND, TEXAS 79701  
(432) 687-0865 - FAX (432) 687-0868

Drawn By: SC	Date: August 18, 2015
Scale: 1" = 200'	Field Book: 599 / 34-36
Revision Date: 1-27-2015	Quadrangle: Walking Cane Ranch
W.O. No: 2014-1682	Dwg. No.: L-2014-1682-B