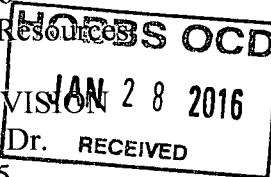


District I
1625 N. French Dr., Hobbs, NM 88240
Phone: (575) 393-6161 Fax: (575) 393-0720
District II
811 S. First St., Artesia, NM 88210
Phone: (575) 748-1283 Fax: (575) 748-9720
District III
1000 Rio Brazos Road, Aztec, NM 87410
Phone: (505) 334-6178 Fax: (505) 334-6170
District IV
1220 S. St. Francis Dr., Sante Fe, NM 87505
Phone: (505) 476-3460 Fax: (505) 476-3462

State of New Mexico
Energy, Minerals & Natural Resources
Department
OIL CONSERVATION DIVISION
1220 South St. Francis Dr.
Sante Fe, NM 87505



FORM C-102

Revised August 1, 2011

Submit one copy to appropriate

District Office

☐ AMENDED REPORT

WELL LOCATION AND ACREAGE DEDICATION PLAT

¹ API Number 30-025-42502		² Pool Code 55610	³ Pool Name SCHARB; BONE SPRING
⁴ Property Code 314395	⁵ Property Name HIBISCUS STATE COM 08-19S-35E RN		⁶ Well Number #124H
⁷ OGRID No. 228937	⁸ Operator Name MATADOR PRODUCTION COMPANY		⁹ Elevation 3849'

¹⁰Surface Location

UL or lot no.	Section	Township	Range	Lot Idn	Feet from the	North/South line	Feet from the	East/West line	County
P	5	19-S	35-E	-	203'	SOUTH	354'	EAST	LEA

UL or lot no.	Section	Township	Range	Lot Idn	Feet from the	North/South line	Feet from the	East/West line	County
P	8	19-S	35-E	-	262'	SOUTH	364'	EAST	LEA

¹² Dedicated Acres 160	¹³ Joint or Infill	¹⁴ Consolidation Code	¹⁵ Order No.
--------------------------------------	-------------------------------	----------------------------------	-------------------------

No allowable will be assigned to this completion until all interests have been consolidated or a non-standard unit has been approved by the division.

<p>SURFACE LOCATION NEW MEXICO EAST NAD 1927 X=765126 Y=613202 LAT.: N 32.6828328 LONG.: W 103.4716393 NAD 1983 X=613266 Y=806306 LAT.: N 32.6829563 LONG.: W 104.4721308</p>	<p>PENETRATION POINT NEW MEXICO EAST NAD 1927 X=765175 Y=613090 LAT.: N 32.6825220 LONG.: W 103.4714842 MD= 10003' NAD 1983 X=613153 Y=806355 LAT.: N 32.6826455 LONG.: W 104.4719758</p>	<p>FIRST TAKE POINT NEW MEXICO EAST NAD 1927 X=765113 Y=612460 LAT.: N 32.6807920 LONG.: W 103.4717020 MD= 10672' NAD 1983 X=612523 Y=806293 LAT.: N 32.6809155 LONG.: W 104.4721935</p>	<p>17 OPERATOR CERTIFICATION I hereby certify that the information contained herein is true and complete to the best of my knowledge and belief, and that this organization either owns a working interest or unleased mineral interest in the land including the proposed bottom hole location or has a right to drill this well at this location pursuant to a contract with an owner of such a mineral or working interest, or to a voluntary pooling agreement or a compulsory pooling order heretofore entered by the division. Signature: <i>Chris Carleton</i> Date: 1/27/16 Printed Name: Chris Carleton E-mail Address: ccarleton@matadorresources.com</p>
<p>BOTTOM HOLE LOCATION NEW MEXICO EAST NAD 1927 X=765159 Y=607954 LAT.: N 32.6684080 LONG.: W 103.4716728 MD= 15187' NAD 1983 X=608018 Y=806339 LAT.: N 32.6685316 LONG.: W 104.4721637</p>	<p>LAST TAKE POINT NEW MEXICO EAST NAD 1927 X=765147 Y=608155 LAT.: N 32.6689608 LONG.: W 103.4717047 MD= 14985' NAD 1983 X=608219 Y=806327 LAT.: N 32.6690843 LONG.: W 104.4721956</p>	<p>18 SURVEYOR CERTIFICATION I hereby certify that the well location shown on this plat was plotted from field notes of actual surveys made by me or under my supervision, and that the same is true to the best of my belief. 01/26/2016 Date of Survey Signature and Seal of Professional Surveyor: <i>Michael B. Brown</i> Certificate Number: 18329</p>	

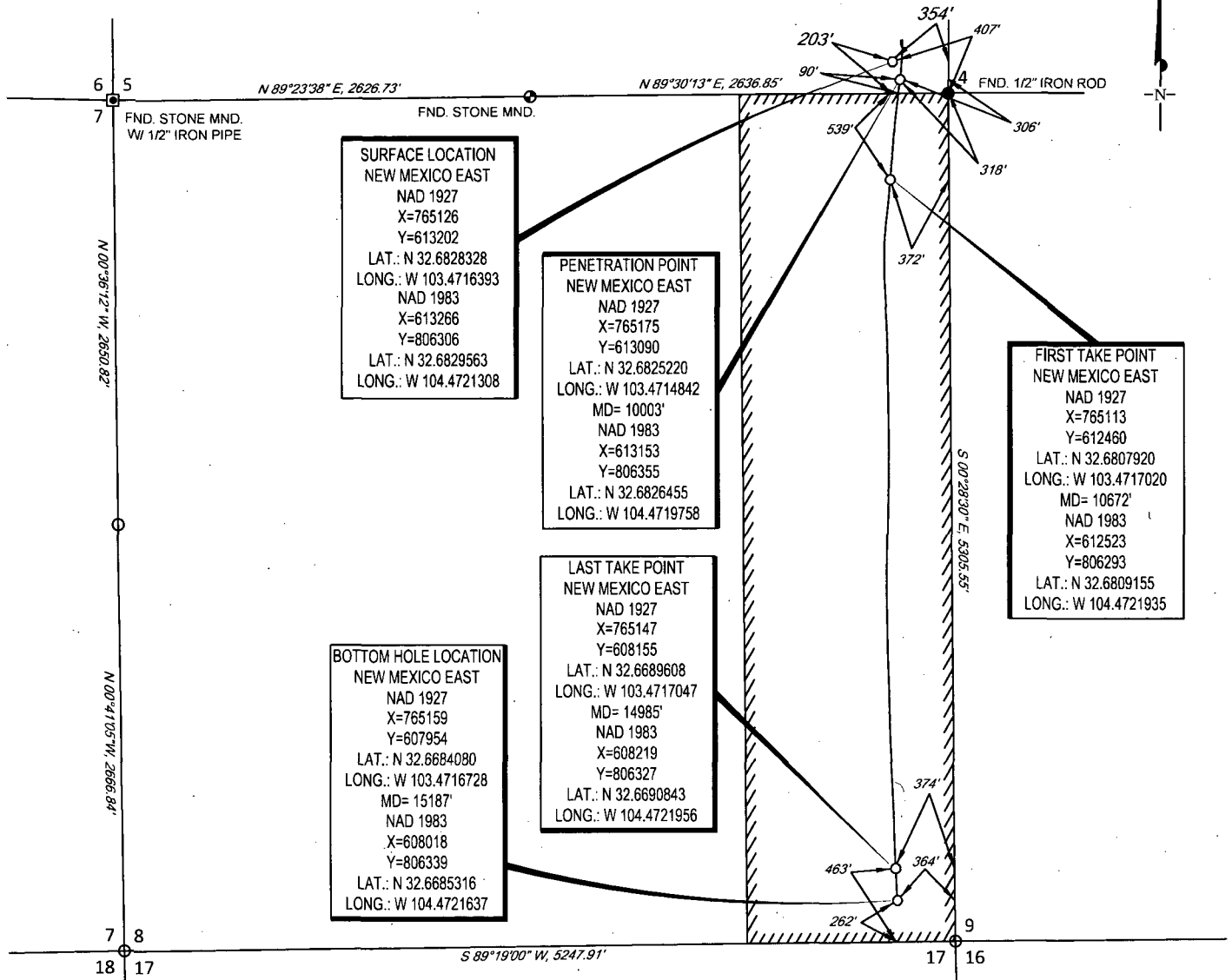
S:\SURVEY\MATADOR_RESOURCES\HIBISCUS_STATE_COM_08-19S-35E_RN_124H\FINAL_PRODUCTS\AD_HIBISCUS_STATE_COM_08_19S_35E_RN_124H_C-102.DWG 1/26/2016 4:47:11 PM jstovall

FEB 23 2016 cy

SCALE: 1" = 1000'

0' 500' 1000'

SECTION 5, TOWNSHIP 19-S, RANGE 35-E, N.M.P.M.
LEA COUNTY, NEW MEXICO



LEASE NAME & WELL NO.: HIBISCUS STATE COM 08-19S-35E RN #124H
SECTION 5 TWP 19-S RGE 35-E SURVEY N.M.P.M.
COUNTY LEA STATE NM ELEVATION 3849'
DESCRIPTION 203' FSL & 354' FEL



TOPOGRAPHIC
LOYALTY INNOVATION LEGACY

1400 EVERMAN PARKWAY, Ste. 197 - FT. WORTH, TEXAS 76140
TELEPHONE: (817) 744-7512 - FAX: (817) 744-7548
2803 NORTH BIG SPRING - MIDLAND, TEXAS 79705
TELEPHONE: (432) 682-1653 OR (800) 767-1653 - FAX: (432) 682-1743
WWW.TOPOGRAPHIC.COM

Michael Blake Brown, P.S. No. 18329
JANUARY 26, 2016

HIBISCUS STATE COM 08-19S-35E RN #124H	REVISION:		NOTES:
	INT	DATE	
DATE: 1/26/16			<p>1. ORIGINAL DOCUMENT SIZE: 8.5" X 11"</p> <p>2. ALL BEARINGS, DISTANCES, AND COORDINATE VALUES CONTAINED HEREIN ARE GRID BASED UPON THE NEW MEXICO STATE PLANE COORDINATE SYSTEM, EAST ZONE, U.S. SURVEY FEET, NORTH AMERICAN DATUM 1927.</p> <p>3. CERTIFICATION IS MADE ONLY TO THE LOCATION OF THIS EASEMENT, IN RELATION TO THE EVIDENCE FOUND DURING A FIELD SURVEY, MADE ON THE GROUND, UNDER MY SUPERVISION, AND USING DOCUMENTATION PROVIDED BY MATADOR PRODUCTION COMPANY. ONLY UTILITIES/EASEMENTS THAT WERE VISIBLE ON THE DATE OF THIS SURVEY, WITHIN/ADJOINING THIS EASEMENT, HAVE BEEN LOCATED AS SHOWN HEREON OF WHICH I HAVE KNOWLEDGE. THIS CERTIFICATION IS LIMITED TO THOSE PERSONS OR ENTITIES SHOWN ON THE FACE OF THIS PLAT AND IS NON-TRANSFERABLE, AND MADE FOR THIS TRANSACTION ONLY.</p>
FILE: AD_HIBISCUS_STATE_COM_08_19S_35E_RN_124H			
DRAWN BY: GJU			
SHEET: 1 OF 1			