

1625 N. French Dr., Hobbs, NM 88240
Phone: (575) 393-6161 Fax: (575) 393-0720

DISTRICT II

811 S. First St., Artesia, NM 88210
Phone: (575) 748-1283 Fax: (575) 748-9720

DISTRICT III

1000 Rio Brazos Rd., Aztec, NM 87410
Phone: (505) 334-6178 Fax: (505) 334-6170

DISTRICT IV

1220 S. St. Francis Dr., Santa Fe, NM 87505
Phone: (505) 476-3460 Fax: (505) 476-3462

State of New Mexico

Energy, Minerals & Natural Resources Department

OIL CONSERVATION DIVISION

1220 South St. Frances Dr.

Santa Fe, NM 87505

Form C-102

Revised August 1, 2011

Submit one copy to appropriate

District Office

HOBBS QCD

FEB 29 2016

RECEIVED

☐ AMENDED REPORT

WELL LOCATION AND ACREAGE DEDICATION PLAT

API Number 30-025-43093	Pool Code 37570	Pool Name Lea; Bone Spring
Property Code 302802	Property Name LEA UNIT	Well Number 40H
OGRID No. 240974	Operator Name LEGACY RESERVES OPERATING LP	Elevation 3675'

Surface Location

UL or lot No.	Section	Township	Range	Lot Idn	Feet from the	North/South line	Feet from the	East/West line	County
1	24	20 S	34 E		2270	SOUTH	610	EAST	LEA

Bottom Hole Location If Different From Surface

UL or lot No.	Section	Township	Range	Lot Idn	Feet from the	North/South line	Feet from the	East/West line	County
A	13	20 S	34 E		330	NORTH	890	EAST	LEA

Dedicated Acres 240	Joint or Infill	Consolidation Code	Order No.
------------------------	-----------------	--------------------	-----------

NO ALLOWABLE WILL BE ASSIGNED TO THIS COMPLETION UNTIL ALL INTERESTS HAVE BEEN CONSOLIDATED OR A NON-STANDARD UNIT HAS BEEN APPROVED BY THE DIVISION

330°

890°

Plane Coordinate
 $X = 754,365.2$ (BHL)
 $Y = 575,461.2$

13

N 2°26'47" W - 7957.6'

T-20-S, R-34-E
T-20-S, R-35-E

24

#40H (SL)

610°

2270°

Plane Coordinate
 $X = 754,704.8$
 $Y = 567,512.4$

NOTE:

t) Plane Coordinates shown hereon are Transverse Mercator Grid and, Conform to the "New Mexico Coordinate System", New Mexico East Zone, North American Datum of 1927. Distances shown hereon are mean horizontal surface values.

OPERATOR CERTIFICATION

I hereby certify that the information contained herein is true and complete to the best of my knowledge and belief, and that this organization either owns a working interest or unleased mineral interest in the land including the proposed bottom hole location or has a right to drill this well at this location pursuant to a contract with an owner of such a mineral or working interest, or to a voluntary pooling agreement or a compulsory pooling order heretofore entered by the division.

Signature Barry W. Hunt Date 9/7/15
Printed Name Barry W. Hunt

E-mail Address

SURVEYOR CERTIFICATION

I hereby certify that the well location shown on this plat was plotted from field notes of actual surveys made by me or under my supervision, and that the same is true and correct to the best of my belief.

June 24, 2015

Date of Survey

Signature & Seal of Professional Surveyor

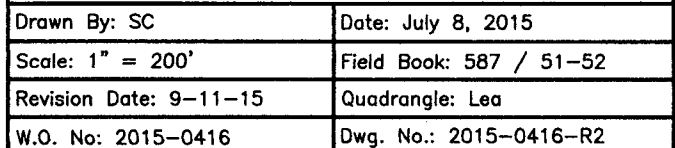
12185

W.O. Num. 2015-0416-R

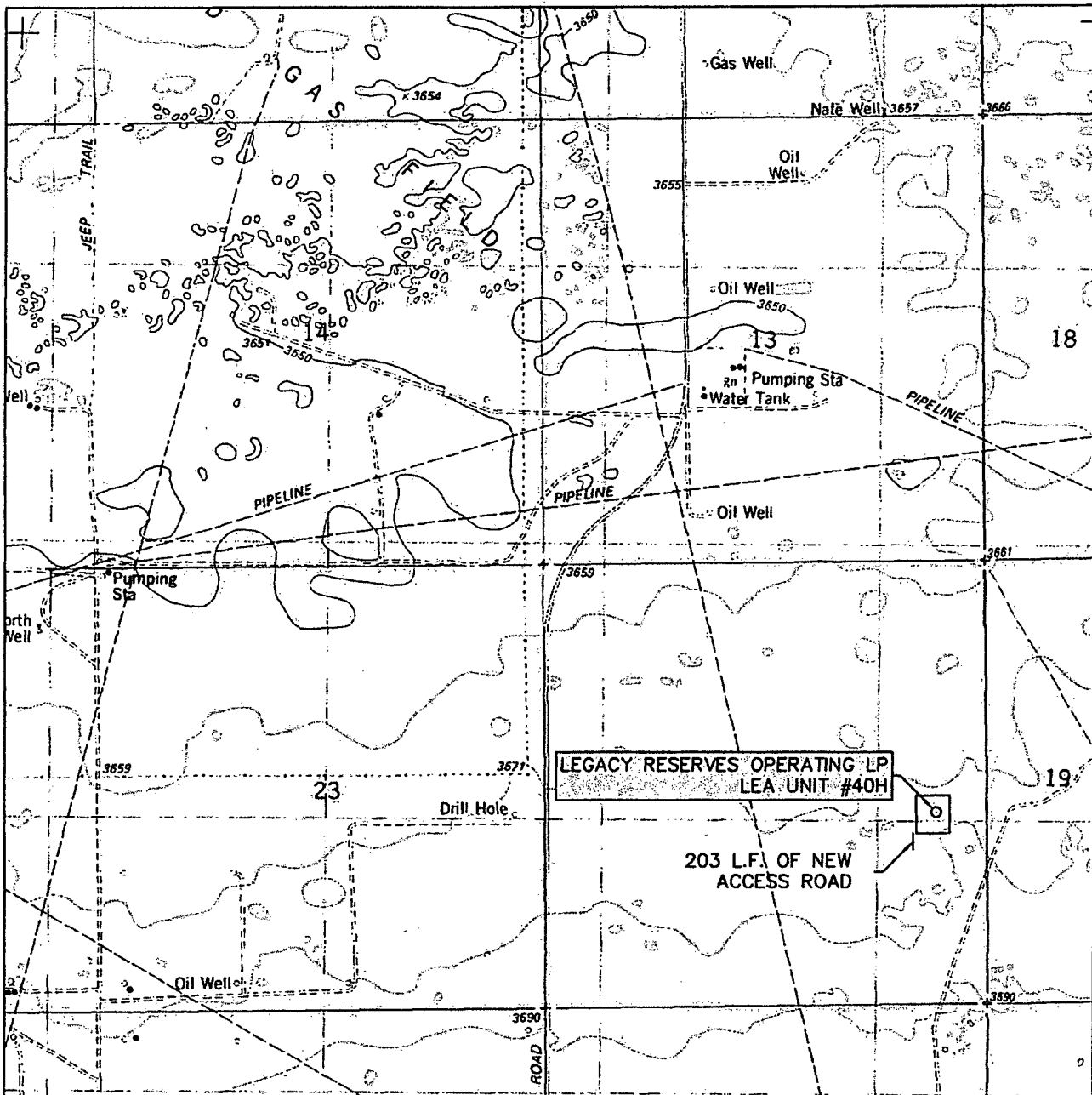
Certificate No. Macon McDoñald.....12185

Scale
1" = 2000'

2015-0416-R2



LOCATION VERIFICATION MAP



SCALE: 1" = 2000'

CONTOUR INTERVAL:
LEA - 10'

SEC. 24 TWP. 20-S RGE. 34-E

SURVEY N.M.P.M.

COUNTY LEA

DESCRIPTION 2270' FSL & 610' FEL

ELEVATION 3675'

OPERATOR LEGACY RESERVES OPERATING LP

LEASE LEA UNIT

U.S.G.S. TOPOGRAPHIC MAP
LEA



FIRM REGISTRATION NUMBER: 100682-00
110 W. LOUISIANA, STE. 110
MIDLAND TEXAS, 79701
(432) 687-0865 - (432) 687-0868 FAX

Exhibit A+B

Access
+
one mile

3" = 1 mile

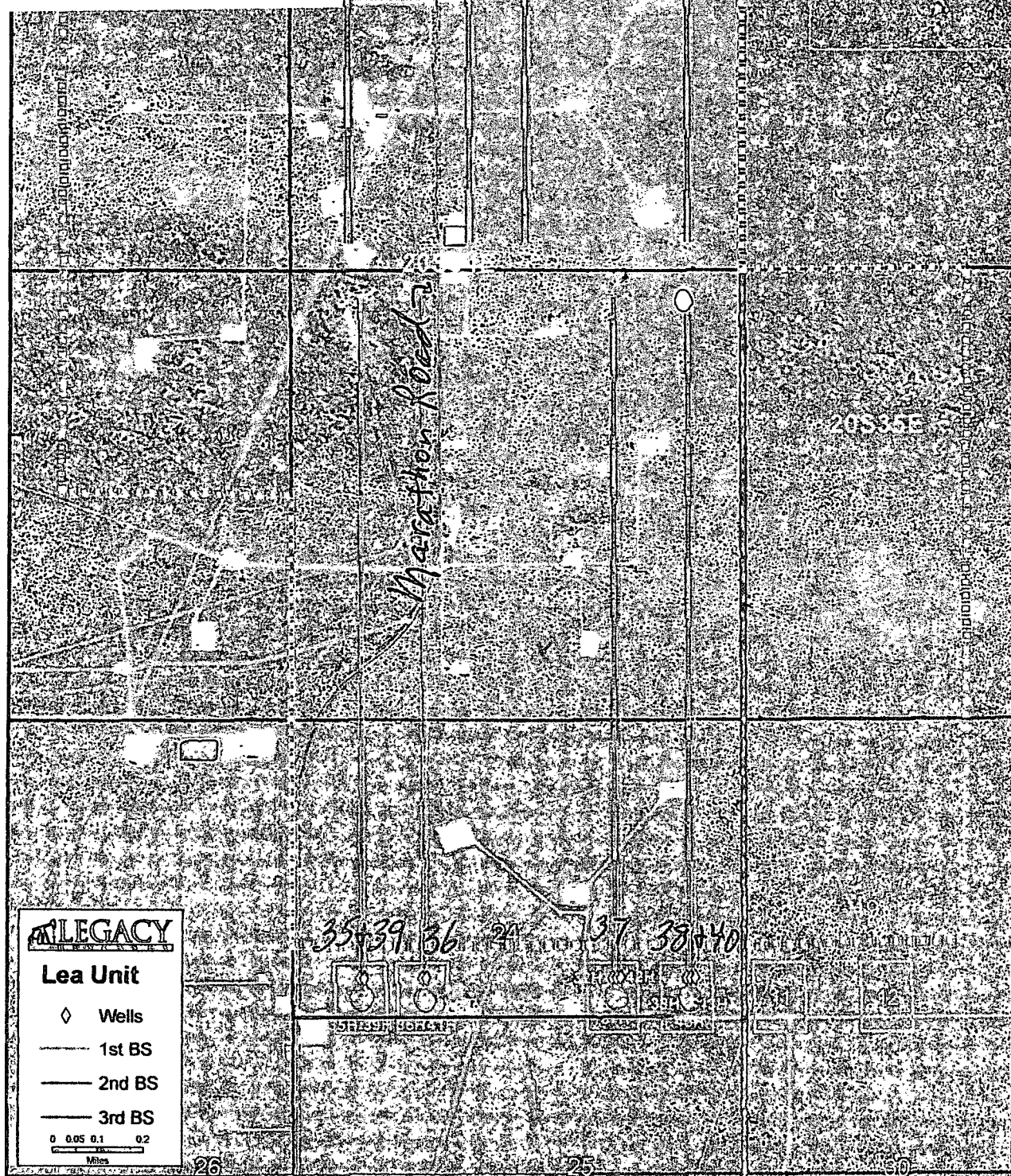
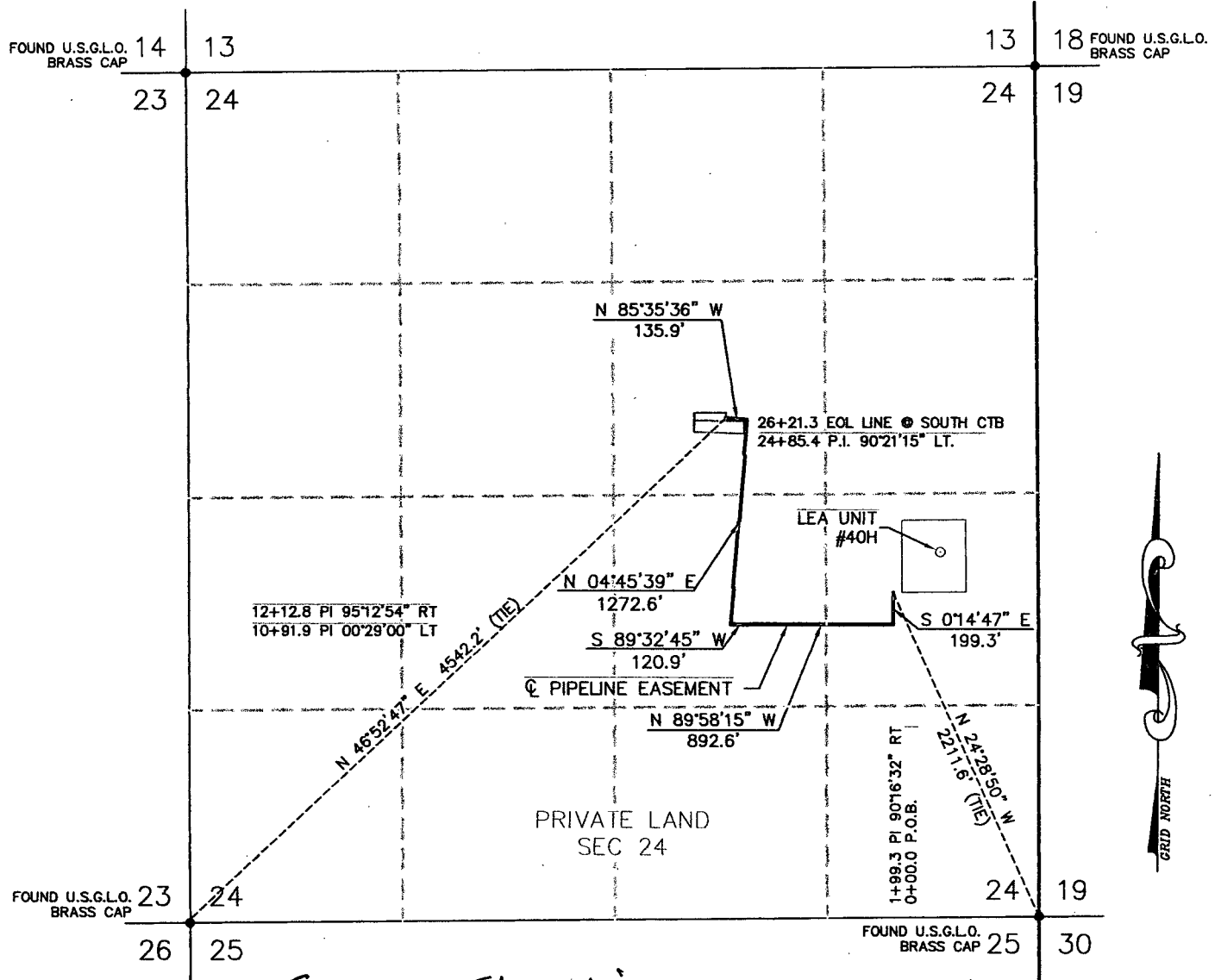


Exhibit E

SECTION 24, TOWNSHIP 20 SOUTH, RANGE 34 EAST, N.M.P.M.
LEA COUNTY NEW MEXICO



Ex. E - FlowLine

LEGAL DESCRIPTION

A STRIP OF LAND BEING 50 FEET WIDE, 2,621.3 FEET OR 0.496 MILES IN LENGTH AND BEING 25.0 FEET RIGHT AND 25.0 FEET LEFT OF THE ABOVE PLATTED CENTERLINE.

NOTE: The above platted centerline was created using data as provided by client and/or client's representative and has not been staked on the ground or in the field.



SURVEYORS - ENGINEERS - PLANNERS
110 W. LOUISIANA AVE., SUITE 110
MIDLAND, TEXAS 79701
(432) 687-0865 - FAX (432) 687-0868

LEGEND

- - DENOTES FOUND MONUMENT (AS DESCRIBED)
- - DENOTES PIPE LINE



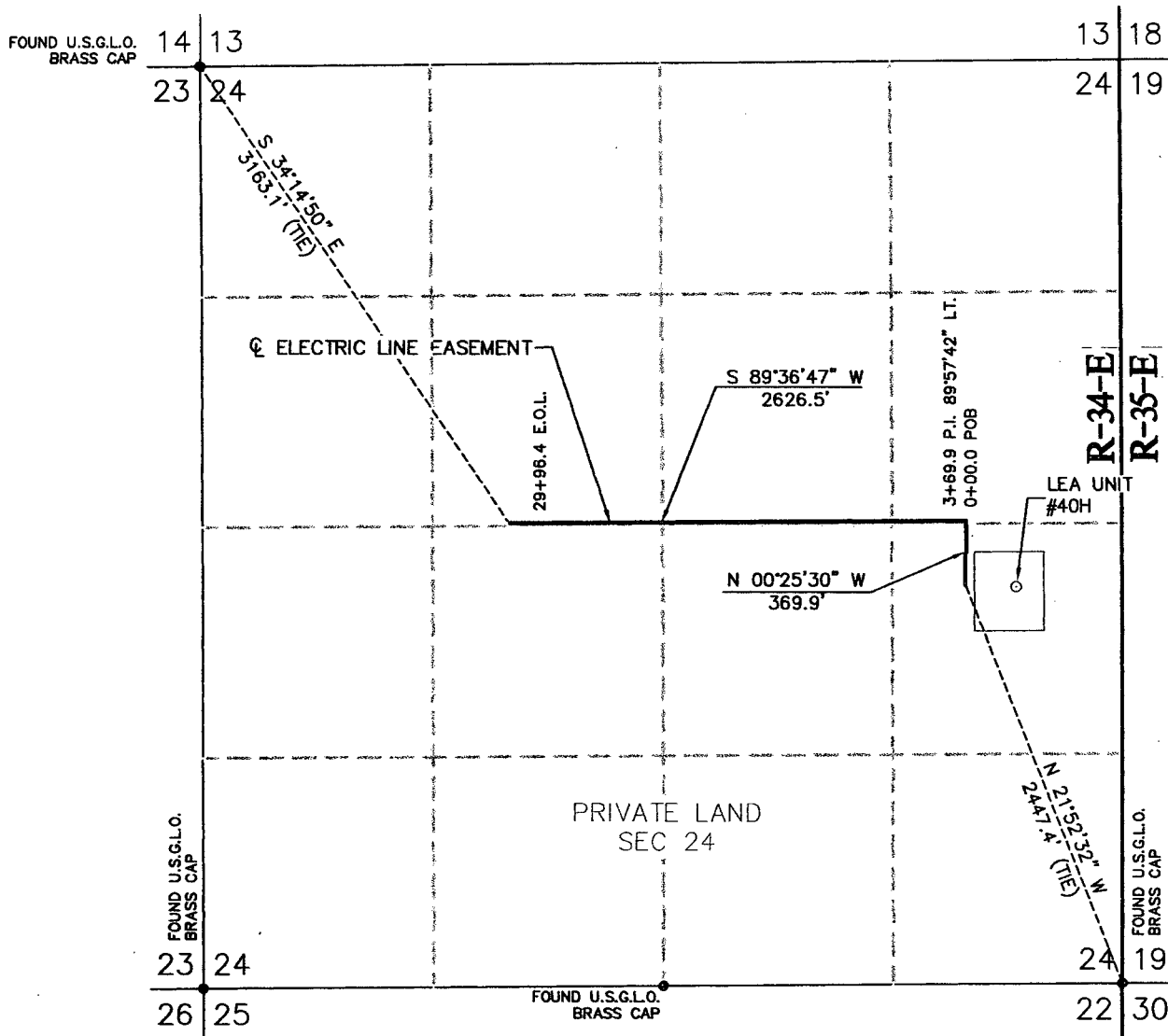
LEGACY RESERVES OPERATING LP

A PIPELINE EASEMENT LOCATED ON
PRIVATE LAND IN SECTION 24
TOWNSHIP 20 SOUTH, RANGE 34 EAST,
N.M.P.M., LEA COUNTY, NEW MEXICO

Survey Date: N/A	Sheet 1 of 1 Sheets
W.O. Number: 2015-0416	Drawn By: SC/LRG
Date: 9-11-2015	2015-0416-R4.DWG
Scale: 1" = 1000'	

Exhibit F

SECTION 24, TOWNSHIP 20 SOUTH, RANGE 34 EAST, N.M.P.M.
LEA COUNTY NEW MEXICO



LEGEND

- - DENOTES FOUND MONUMENT (AS DESCRIBED)
- - DENOTES CENTERLINE ELECTRIC EASEMENT

LEGAL DESCRIPTION

A STRIP OF LAND BEING 50 FEET WIDE, 2,996.4 FEET OR 0.568 MILES IN LENGTH AND BEING 25.0 FEET RIGHT AND 25.0 FEET LEFT OF THE ABOVE PLATTED CENTERLINE.



LEGACY RESERVES OPERATING LP

AN ELECTRIC LINE EASEMENT LOCATED ON
FEE LAND IN SECTION 24
TOWNSHIP 20 SOUTH, RANGE 34 EAST,
N.M.P.M., LEA COUNTY, NEW MEXICO



SURVEYORS - ENGINEERS - PLANNERS
110 W. LOUISIANA AVE., SUITE 110
MIDLAND, TEXAS 79701
(432) 687-0865 - FAX (432) 687-0868

Survey Date: June 25, 2015	Sheet 1 of 1 Sheets
W.O. Number: 2015-0416	Drawn By: SC/LRG
Date: July 8, 2015	2015-0416-R5.DWG Scale: 1" = 1000'