

DISTRICT I
1625 N. French Dr., Hobbs, NM 88240
Phone (575) 393-6181 Fax: (575) 393-0720

DISTRICT II
811 S. First St., Artesia, NM 88210
Phone (575) 748-1283 Fax: (575) 748-9720

DISTRICT III
1000 Rio Brazos Rd., Aztec, NM 87410
Phone (505) 334-6178 Fax: (505) 334-6170

DISTRICT IV
1226 S. St. Francis Dr., Santa Fe, NM 87505
Phone (505) 476-3480 Fax: (505) 476-3482

State of New Mexico
Energy, Minerals and Natural Resources Department

HOBBS OCS

Form C-102
Revised August 1, 2011

Submit one copy to appropriate
District Office

OIL CONSERVATION DIVISION
1226 South St. Francis Dr.
Santa Fe, New Mexico 87505

RECEIVED

☐ AMENDED REPORT

WELL LOCATION AND ACREAGE DEDICATION PLAT

| | | |
|------------------------------|--|----------------------------|
| API Number 30-025-42744 ✓ | Pool Code 33813 | Pool Name Jal; Wolfcamp |
| Property Code 315162 | Property Name PRIZEHOG BWZ STATE COM ✓ | Well Number 1H ✓ |
| OGRID No. 025575 | Operator Name YATES PETROLEUM CORPORATION ✓ | Elevation 2958 |

Surface Location

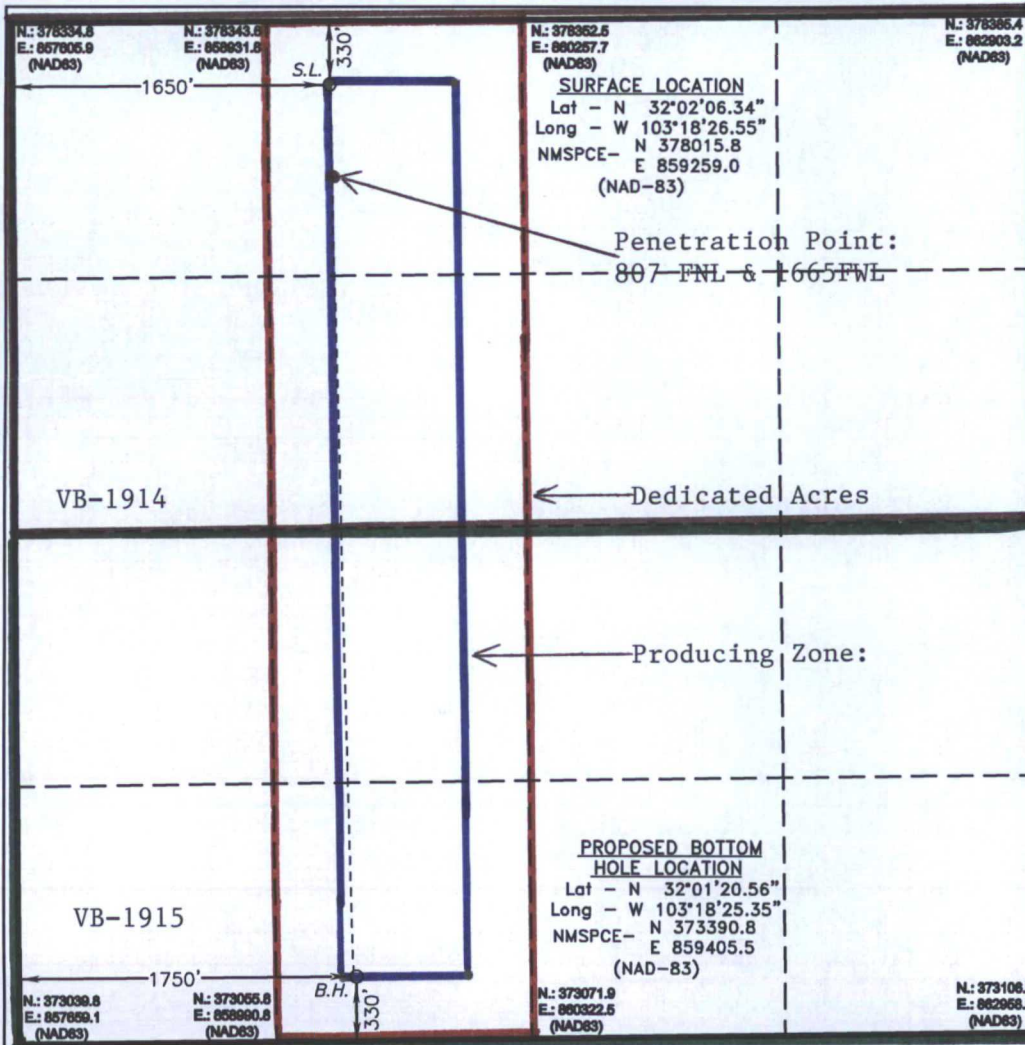
| UL or lot No. | Section | Township | Range | Lot Idn | Feet from the | North/South line | Feet from the | East/West line | County |
|---------------|---------|----------|-------|---------|---------------|------------------|---------------|----------------|--------|
| C | 19 | 26 S | 36 E | | 330 | NORTH | 1650 | WEST | LEA ✓ |

Bottom Hole Location If Different From Surface

| UL or lot No. | Section | Township | Range | Lot Idn | Feet from the | North/South line | Feet from the | East/West line | County |
|---------------|---------|----------|-------|---------|---------------|------------------|---------------|----------------|--------|
| N | 19 | 26 S | 36 E | | 330 | SOUTH | 1750 | WEST | LEA |

| Dedicated Acres | Joint or Infill | Consolidation Code | Order No. |
|-----------------|-----------------|--------------------|-----------|
| 160 | | | |

NO ALLOWABLE WILL BE ASSIGNED TO THIS COMPLETION UNTIL ALL INTERESTS HAVE BEEN CONSOLIDATED
OR A NON-STANDARD UNIT HAS BEEN APPROVED BY THE DIVISION



OPERATOR CERTIFICATION

I hereby certify that the information contained herein is true and complete to the best of my knowledge and belief, and that this organization either owns a working interest or unleased mineral interest in the land including the proposed bottom hole location or has a right to drill this well at this location pursuant to a contract with an owner of such a mineral or working interest, or to a voluntary pooling agreement or a compulsory pooling order heretofore entered by the division.

Travis Hahn 2/17/16
Signature Date

Travis Hahn
Printed Name

thahn@yatespetroleum.com
Email Address

SURVEYOR CERTIFICATION

I hereby certify that the well location shown on this plat was plotted from field notes of actual surveys made by me or under my supervision and that the same is true and correct to the best of my belief.

GARY L. JONES
Date Surveyed 7/7/15
Signature & Seal of Professional Surveyor

CERTIFICATE No. Gary L. Jones 7977
BASIN SURVEYS

0' 500' 1000' 1500' 2000'
SCALE: 1" = 1000'
WO Num.: 31865

MAR 02 2016