

Submit 1 Copy To Appropriate District Office
District I - (575) 393-6161
1625 N. French Dr., Hobbs, NM 88240
District II - (575) 748-1283
811 S. First St., Artesia, NM 88210
District III - (505) 334-6178
1000 Rio Brazos Rd., Aztec, NM 87410
District IV - (505) 476-3460
1220 S. St. Francis Dr., Santa Fe, NM 87505

State of New Mexico
Energy, Minerals and Natural Resources

Form C-103
Revised July 18, 2013

OIL CONSERVATION DIVISION
1220 South St. Francis Dr.
Santa Fe, NM 87505

WELL API NO. 30-025-02762	
5. Indicate Type of Lease STATE <input type="checkbox"/> FEE <input checked="" type="checkbox"/>	
6. State Oil & Gas Lease No. 27802	
7. Lease Name or Unit Agreement Name EXXON TOWNSEND	
8. Well Number	1
9. OGRID Number	162928
10. Pool name or Wildcat Townsend; Abo, Northwest	

SUNDRY NOTICES AND REPORTS ON WELLS
(DO NOT USE THIS FORM FOR PROPOSALS TO DRILL OR TO DEEPEN OR PLUG BACK TO A DIFFERENT RESERVOIR. USE "APPLICATION FOR PERMIT" (FORM C-101) FOR SUCH PROPOSALS.)

1. Type of Well: Oil Well ☒ Gas Well ☐ Other

2. Name of Operator

ENERGEN RESOURCES CORPORATION

3. Address of Operator

3510 N. "A" St., Bldgs. A&B Midland, TX 79705

4. Well Location

Unit Letter B : 660 feet from the NORTH line and 1980 feet from the EAST line

Section: 9 Township: 16-S Range: 35-E NMPM County: Lea

11. Elevation (Show whether DR, RKB, RT, GR, etc.)

4017' GL

12. Check Appropriate Box to Indicate Nature of Notice, Report or Other Data

NOTICE OF INTENTION TO:

PERFORM REMEDIAL WORK ☐ PLUG AND ABANDON ☒
TEMPORARILY ABANDON ☐ CHANGE PLANS ☐
PULL OR ALTER CASING ☐ MULTIPLE COMPL ☐
DOWNHOLE COMMINGLE ☐
CLOSED-LOOP SYSTEM ☐
OTHER: ☐

SUBSEQUENT

REMEDIAL WORK ☐
COMMENCE DRILLING OPNS. ☐
CASING/CEMENT JOB ☐

INT TO PA ☒
P&A NR ☐
P&A R ☐

OTHER: ☐

13. Describe proposed or completed operations. (Clearly state all pertinent details, and give pertinent dates, including estimated date of starting any proposed work). SEE RULE 19.15.7.14 NMAC. For Multiple Completions: Attach wellbore diagram of proposed completion or recompletion.

-- SEE ATTACHED --

PLUG & ABANDON PROPOSED PROCEDURE

* NOTE CHANGES
TO INTENT

NOTIFY OCD 24 HOURS PRIOR TO BEGINNING
PLUGGING OPERATIONS

Spud Date:

Rig Release Date:

I hereby certify that the information above is true and complete to the best of my knowledge and belief.

SIGNATURE Brenda F. Rathjen TITLE: Regulatory Analyst DATE 2/24/2016

Type or print name: Brenda F. Rathjen E-mail address: brenda.rathjen@energen.com PHONE: 432-688-3323

For State Use Only

APPROVED BY: Mark Whitaker TITLE Petroleum Engr. Specialist DATE 03-01-2016

Conditions of Approval (if any):

MAR 03 2016

ENERGEN RESOURCES CORPORATION

Exxon Townsend #1, API # 30-025-02762

AFE # PB15500356, \$75,000

660' FNL, 1980' FEL

Sec. 9, T-16-S, R-35-E

Lea County, NM

The Exxon Townsend #1 was spud 01/27/53, and was completed 04/14/53 as a Wolfcamp producer. It was plugged back to 8890' 09/02/64, and recompleted as an Abo producer. That tested unsuccessful, and it was temporarily abandoned at that time. It was later P&A'd, with 5-1/2 casing pulled to 2015' (no record of date). It was re-entered 09/23/81, drilled out to 8890', acidized, and placed on production from the Abo perms. The well is no longer economic to produce, and needs to be P&A'd. The AFE has been approved.

For scope changes during work, stop and discuss with engineering before proceeding

API:	30-025-02762	KB:	13'	PBTD:	8890'
Spud Date:	1/27/1953	GLE:	4030'	TD:	10501'

Plug and Abandon Procedure

SAFETY CONSIDERATIONS

Observe all Energen Guidelines for PPE and H2S Safety

Observe perforation and contractor safety guidelines

Wireline and explosives on location while perforating

Workstring should be in good condition and tested to 5000 psi.

BOP should be in good working condition and tested

Rig anchors will need to be tested prior to MIRU

Keep a TIW valve open and on the rig floor at all times

Notify the NM OCD 24 hours prior to starting P&A operations

Meet with engineer, superintendents, and consultant prior to beginning the job, to assure that everyone is agreement with the procedure.

Bid as a turnkey project.

- 1 MIRU Well Service Unit.
- 2 NDWH
- 3 NU adapter flange and BOP for 5-1/2" csg and 2-3/8" tubing. Test to 500 psi above working pressure.
- 4 POOH and LD production string.
- 5 Reset BOP for 5-1/2 csg and 2-7/8" workstring.
- 6 Unload and rack 9,000' 2-7/8" workstring. Maintain kill truck w/10 ppg brine on location.
- 7 RIH with workstring. Circulate hole to 10 ppg mud.
- 8 POOH. RIH, set CIBP @8700', and dump bail 5 sx cmt or 25 ²⁵ sx through tubing.
- 9 RIH w/ workstring and packer. Tag cmt above CIBP.
- 10 Perforate and squeeze at 7400' w/ 30 sxs cement plug and displace to 7300'. (Tubb)
- 11 WOC and tag.
- 12 Perforate and squeeze at 4623' w/ 40 sxs cement plug and displace to 4523'. (shoe) *Spot 25 sx @ 3150' (B. Salt)*
- 13 Pull uphole, spot 40 sxs Class "C" cement at 2072'-1972'. (5-1/2" stub) *WOC + TAG*
- 14 Perforate and squeeze at 440' w/ 40 sxs cement plug and displace to 310'. (surface casing shoe) *Spot cmt from 460' to surface*
- 15 WOC & tag.
- 16 Pull uphole, spot 10 sxs Class "C" cement at 100' to surface. (Visual top plug)
- 17 ND BOP. Top off well with cement. RD and clean location.
- 18 Cut off all casing strings at base of cellar or 3' below restored ground level. *— verify cmt to surface all strings*
- 19 Cover wellbore with metal plate welded in place or with cement cap.
- 20 Erect capped abandonment marker inscribed with well information.
- 21 Cut off dead man anchors and fill in cellar. Backfill pit. RDMO.
- 22 Clean and restore location to natural condition and fulfill any and all regulatory requirements.

ENERGEN RESOURCES CORP

Exxon Townsend #1

(formerly Hulda A. Townsend 1)

LEA COUNTY, NM

Conductor:
None

Surface Casing:
13-3/8", 48# @ 410' in 17-1/2" hole
Cemented to surface
with 450 sx Lone Star neat cmt
Circulated 25 sx

Intermediate Casing:
9-5/8", 362# @ 4583' in 12-1/4" hole
(L) 1900 sx 10% gel

(T) 100 sx neat Longhorn cmt
(Circulated 75 sx)

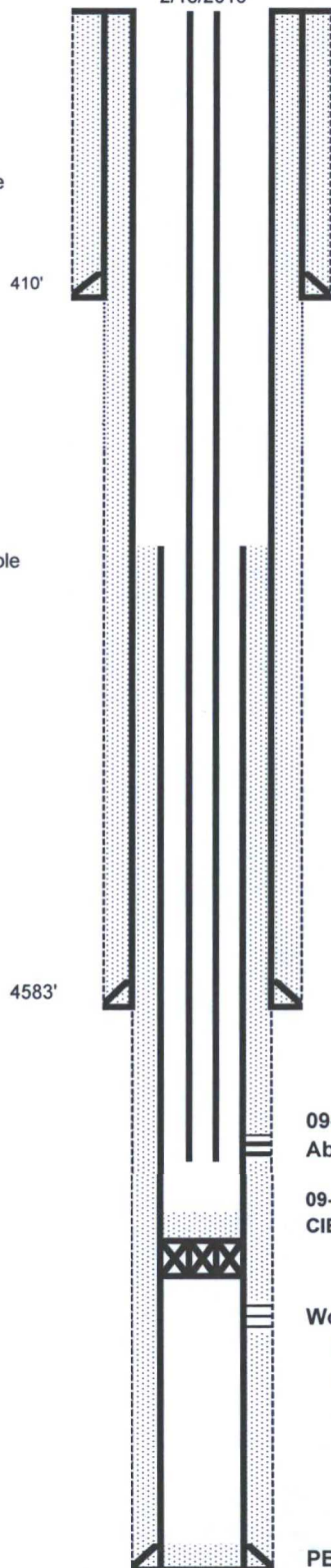
Production Casing:
5-1/2", 15-1/2, 17, 20# @
10,501' in 8-3/4" hole, 1st
stage w/ 150 sx 10% gel. 2-
stg collar @ 9590', 900 sx
regular w/ 10% gel, 100 sx
regular neat

Calc TOC 1780'

KRP 021816

Current Condition Rod Pump

2/18/2016



GL Elevation: 4017'

KB Elevation: 4030'

Location: 660' FNL,
1980' FEL

Sec 9, T-16-S, R-35-E

Spud: 01/27/1953

API : 30-025-02762

Tops:

Rustler: 1807'

Yates: 3035'

San Andres: 4592'

Glorieta: 6216'

Clearfork: 6475'

Tubbs: 7350'

Abo: 7972'

Wolfcamp: 9950'

5-1/2" pulled to 2015'
09-23-81: milled to 2022',
acidized perfs 8716-33'

Production equipment:

DV Tool 9590'

1-1/4"x26' polish rod
1 - 7/8"x4' pony rod
118 - 7/8" "D" rods
207 - 3/4" "D" rods
24 - 7/8" "D" rods
1 - 7/8"x2' pony rod
20-125-Rxxx-5-4, DV, 212" stroke pump
1 - 1"x6' gas anchor
2-3/8" tubing

09-02-64:

Abo perfs: 8716-33', 8 total holes

09-2-64:

CIBP w/ cmt on top to 8890'

Wolfcamp Perfs:

04-14-53: 10436-10474'
shut-off

PBTD: 10,497'
8890' by CIBP, cmt
TD: 10,501'

ENERGEN RESOURCES CORP

Exxon Townsend #1
(formerly Hulda A. Townsend 1)

LEA COUNTY, NM

GL Elevation: 4017'
KB Elevation: 4030'
Location: 660' FNL, 1980' FEL
Sec 9, T-16-S, R-35-E
Spud: 01/27/1953
API : 30-025-02762

Conductor:
None

Surface Casing:
13-3/8", 48# @ 410' in 17-1/2" hole
Cemented to surface
with 450 sx Lone Star neat cmt
Circulated 25 sx

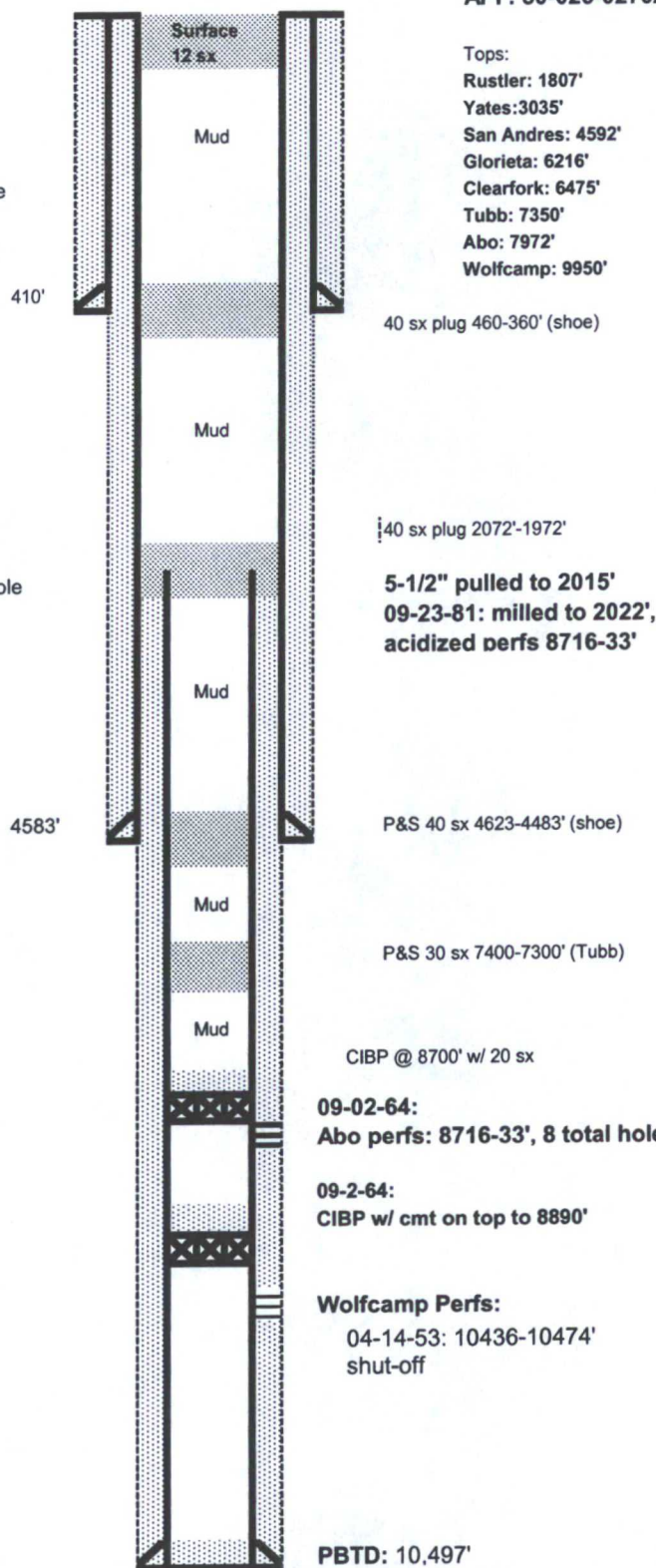
Intermediate Casing:
9-5/8", 362# @ 4583' in 12-1/4" hole
(L) 1900 sx 10% gel

(T) 100 sx neat Longhorn cmt
(Circulated 75 sx)

Production Casing:
5-1/2", 15-1/2, 17, 20# @
10,501' in 8-3/4" hole, 1st
stage w/ 150 sx 10% gel. 2-
stg collar @ 9590'; 900 sx
regular w/ 10% gel, 100 sx
regular neat

Calc TOC 1780'

After P&A



Tops:
Rustler: 1807'
Yates: 3035'
San Andres: 4592'
Glorieta: 6216'
Clearfork: 6475'
Tubb: 7350'
Abo: 7972'
Wolfcamp: 9950'

40 sx plug 460-360' (shoe)

40 sx plug 2072'-1972'

5-1/2" pulled to 2015'
09-23-81: milled to 2022',
acidized perms 8716-33'

P&S 40 sx 4623-4483' (shoe)

P&S 30 sx 7400-7300' (Tubb)

CIBP @ 8700' w/ 20 sx

09-02-64:
Abo perms: 8716-33', 8 total holes

09-2-64:
CIBP w/ cmt on top to 8890'

Wolfcamp Perfs:
04-14-53: 10436-10474'
shut-off

PBTD: 10,497'

TD: 10,501'

KRP 021816