

DISTRICT I  
1625 N. French Dr., Hobbs, NM 88240  
Phone: (575) 393-6161 Fax: (575) 393-0720  
DISTRICT II  
811 S. First St., Artesia, NM 88210  
Phone: (575) 748-1283 Fax: (575) 748-9720  
DISTRICT III  
1000 Rio Brazos Road, Aztec, NM 87410  
Phone: (505) 334-6178 Fax: (505) 334-6170  
DISTRICT IV  
1220 S. St. Francis Dr., Santa Fe, NM 87505  
Phone: (505) 476-3460 Fax: (505) 476-3462

State of New Mexico  
Energy, Minerals & Natural Resources Department  
OIL CONSERVATION DIVISION  
1220 South St. Francis Dr.  
Santa Fe, New Mexico 87505

HOBBS OCD

MAR 07 2016

RECEIVED

Form C-102  
Revised August 1, 2011  
Submit one copy to appropriate  
District Office

AMENDED REPORT

WELL LOCATION AND ACREAGE DEDICATION PLAT

API Number 30-025- 43111	Pool Code 7900	Pool Name BRUNSON; DRINKARD-ABO, SOUTH
Property Code 316020	Property Name MONUMENT FEDERAL	Well Number 1
OGRID No. 194266	Operator Name RUBICON OIL AND GAS, LLC	Elevation 3377'

Surface Location

UL or lot No. D	Section 17	Township 23-S	Range 38-E	Lot Idn	Feet from the 330	North/South line NORTH	Feet from the 330	East/West line WEST	County LEA
--------------------	---------------	------------------	---------------	---------	----------------------	---------------------------	----------------------	------------------------	---------------

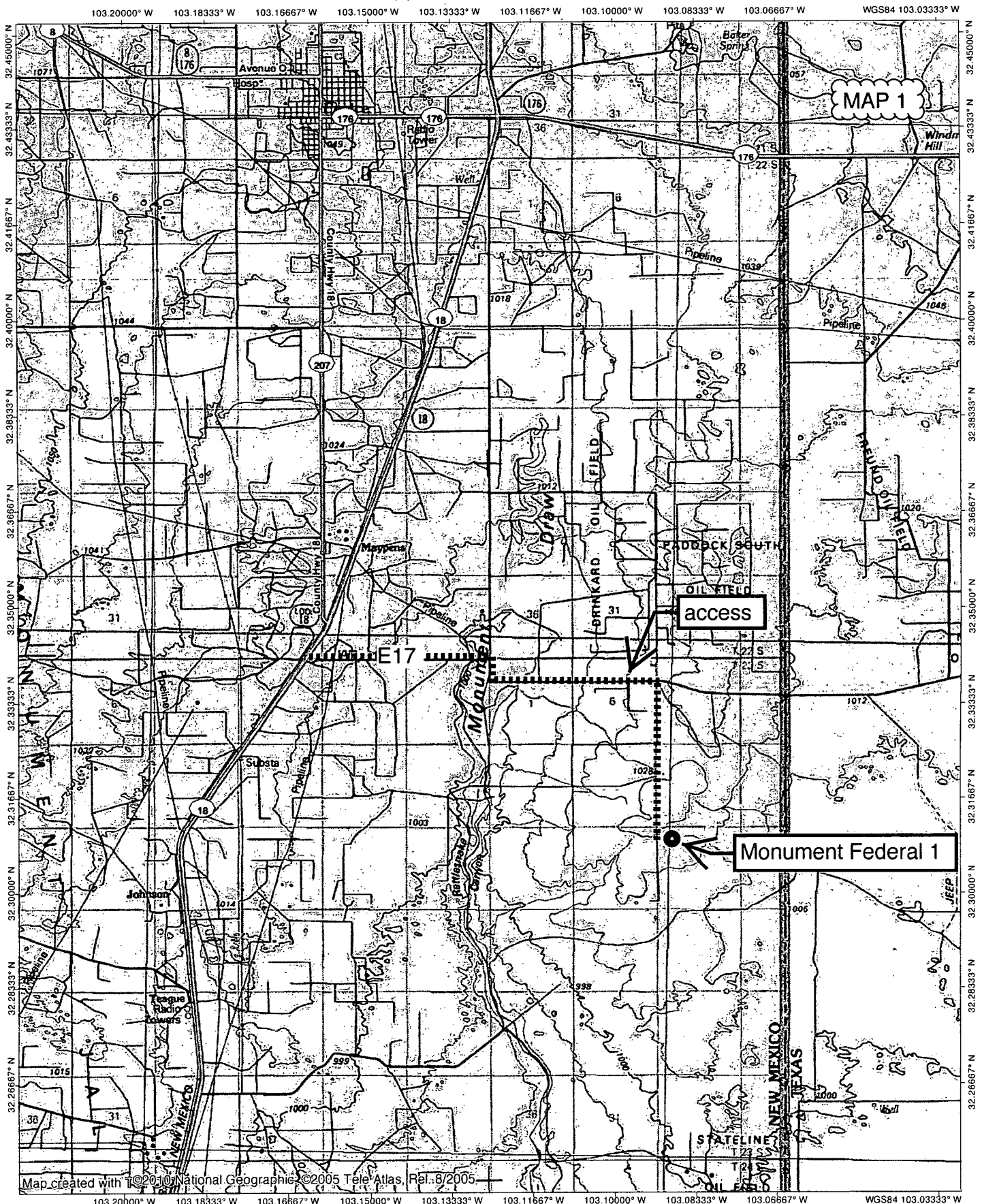
Bottom Hole Location If Different From Surface

UL or lot No.	Section	Township	Range	Lot Idn	Feet from the	North/South line	Feet from the	East/West line	County
Dedicated Acres 40	Joint or Infill	Consolidation Code	Order No.						

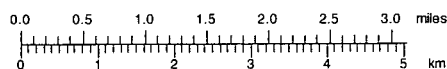
NO ALLOWABLE WILL BE ASSIGNED TO THIS COMPLETION UNTIL ALL INTERESTS HAVE BEEN CONSOLIDATED OR A NON-STANDARD UNIT HAS BEEN APPROVED BY THE DIVISION

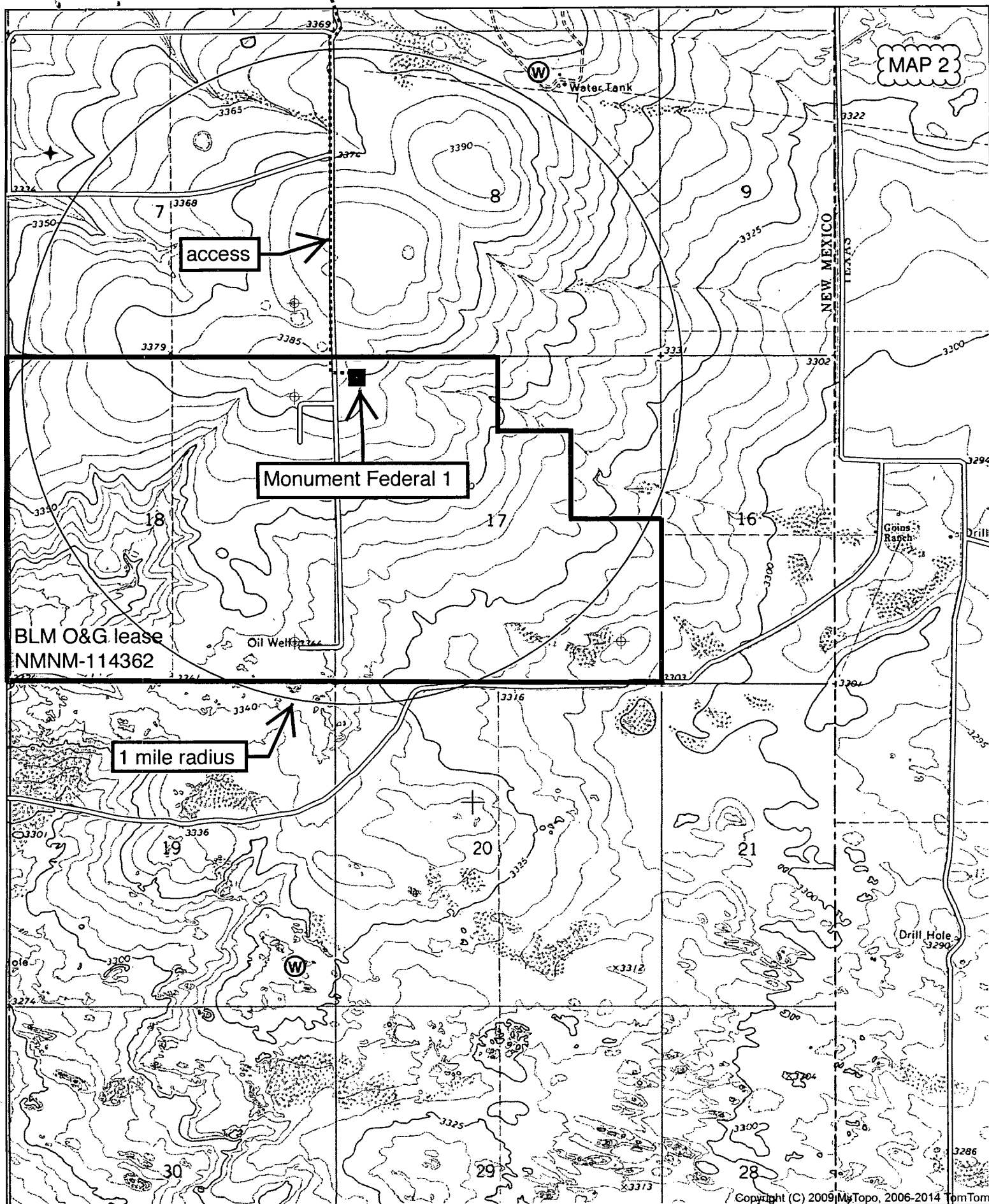
	<b>GEODETTIC COORDINATES</b> NAD 27 NME  <b>SURFACE LOCATION</b> Y= 478956.7 N X= 884286.7 E  LAT.=32.310638° N LONG.=103.089508° W	<b>GEODETTIC COORDINATES</b> NAD 83 NME  <b>SURFACE LOCATION</b> Y= 479014.1 N X= 925472.9 E  LAT.=32.310758° N LONG.=103.089969° W	<b>OPERATOR CERTIFICATION</b> I hereby certify that the information herein is true and complete to the best of my knowledge and belief, and that this organization either owns a working interest or unleased mineral interest in the land including the proposed bottom hole location or has a right to drill this well at this location pursuant to a contract with an owner of such mineral or working interest, or to a voluntary pooling agreement or a compulsory pooling order heretofore entered by the division.  1-26-15 Signature Date <b>BRIAN WOOD</b> Printed Name brian@permitswest.com E-mail Address
	<b>SURVEYOR CERTIFICATION</b> I hereby certify that the well location shown on this plat was plotted from field notes of actual surveys made by me or under my supervision, and that the same is true and correct to the best of my belief. NOVEMBER 4, 2014 Date of Survey Signature & Seal of Professional Surveyor:  Certificate Number 12641 Ronald J. Eidson 3239 LSL JWSC W.O.: 14.11.1072		

MAR 08 2016



Map created with ©2010 National Geographic ©2005 Tele Atlas, Rel. 8/2005





Quad: EUNICE SE  
Scale: 1:24,000

Copyright (C) 2009 MyTopo, 2006-2014 TomTom

Trinity's buried CO2 pipeline  
call (432) 297-1004

to County Road E17

Monument Federal 1

198' new road

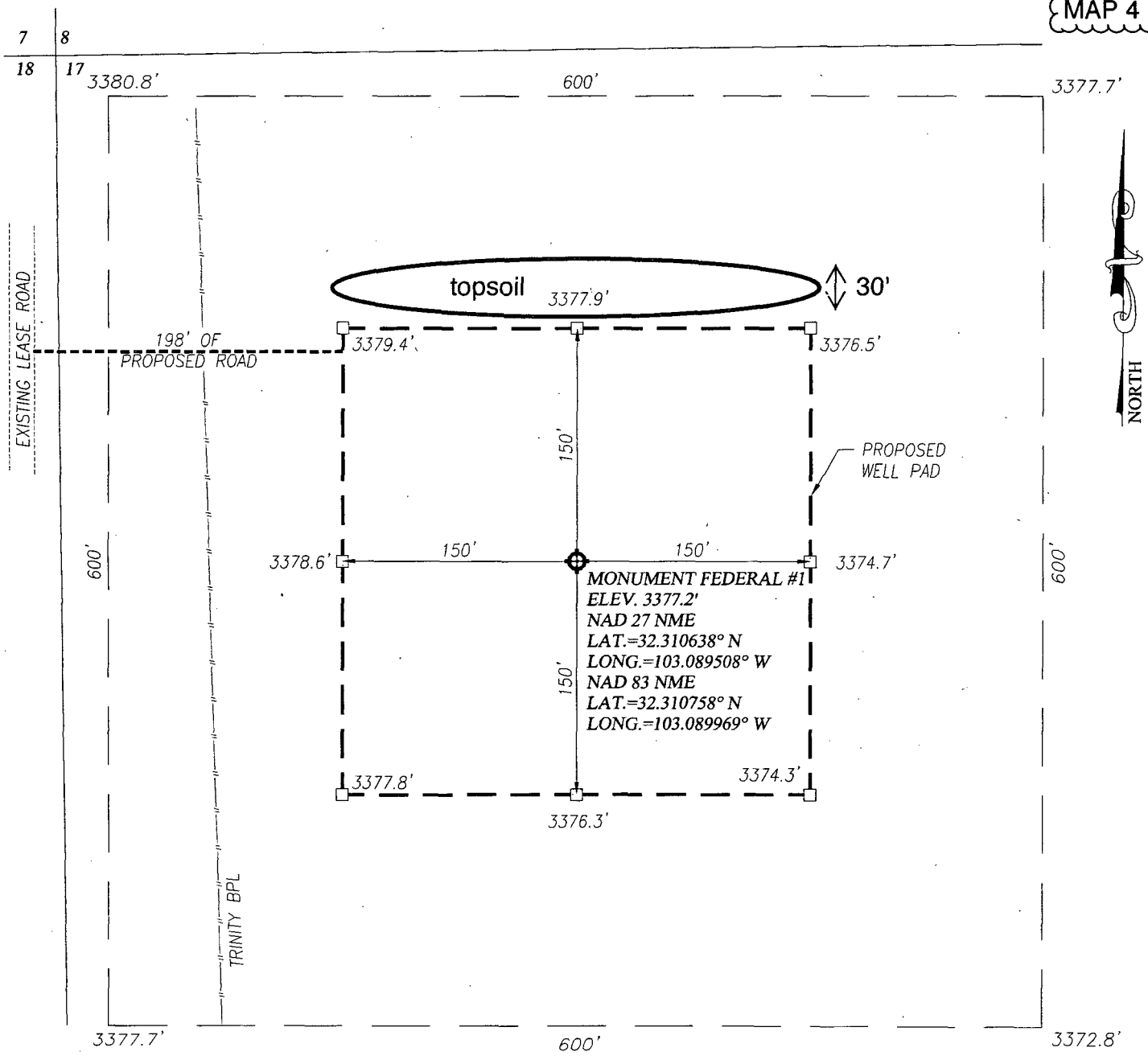
Trinity's buried CO2 pipeline  
call (432) 297-1004

MAP 3

Google earth

© 2014 Google



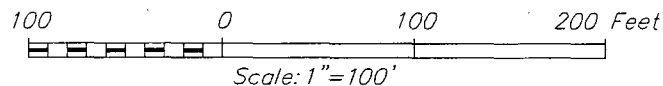


NOTE:

1) SEE "LOCATION VERIFICATION MAP" FOR PROPOSED ROAD LOCATION.

**DIRECTIONS TO MONUMENT FEDERAL #1:**

FROM THE INTERSECTION OF HWY 18 AND CO. RD. E17 (SUMMIT RD.) GO EAST ON E-17 APPROX. 2.2 MILES CONTINUE EAST THROUGH CATTLE GUARD ROAD BENDS RIGHT AND GO SOUTH APPROX. 0.3 MILES TURN LEFT AND GO EAST APPROX. 2.0 MILES THROUGH CATTLE GUARD TURN RIGHT AND GO SOUTH APPROX. 0.75 MILES TO A Y IN ROAD KEEP RIGHT AND GO SOUTH APPROX. 1.0 MILES TO PROPOSED ROAD SURVEY TURN LEFT AND GO EAST 198' TO LOCATION.



**RUBICON OIL AND GAS, LLC**

**MONUMENT FEDERAL #1 WELL  
LOCATED 330 FEET FROM THE NORTH LINE  
AND 330 FEET FROM THE WEST LINE OF SECTION 17,  
TOWNSHIP 23 SOUTH, RANGE 38 EAST, N.M.P.M.,  
LEA COUNTY, NEW MEXICO**



PROVIDING SURVEYING SERVICES  
SINCE 1946  
**JOHN WEST SURVEYING COMPANY**  
412 N. DAL PASO HOBBS, N.M. 88240  
(575) 393-3117 www.jwsc.biz  
TBPLS# 10021000

Survey Date: 11/4/14	CAD Date: 11/21/14	Drawn By: LSL
W.O. No.: 14111072	Rev: .	Rel. W.O.: Sheet 1 of 1