

### H<sub>2</sub>S Drilling Operations Plan

- a. All personnel will be trained in H<sub>2</sub>S working conditions as required by Onshore Order 6 at least 500' before drilling into the Yates Formation.
- b. Two briefing areas will be established. Each will be  $\geq 150'$  from the wellhead, perpendicular from one another, and easily entered and exited. See H<sub>2</sub>S Page 5 for more details.
- c. H<sub>2</sub>S Safety Equipment/Systems:
  - i. Well Control Equipment
    - Flare line will be  $\geq 150'$  from the wellhead and ignited by a flare gun.
    - Beware of SO<sub>2</sub> created by flaring.
    - Choke manifold will include a remotely operated choke.
    - Mud gas separator
  - ii. Protective Equipment for Personnel
    - Every person will wear a personal H<sub>2</sub>S and SO<sub>2</sub> monitor at all times while on site. Monitors will not be worn on hats. Monitors will be worn on the front of the waist or chest.
    - One self-contained breathing apparatus (SCBA) 30-minute rescue pack will be at each briefing area. Two 30-minute SCBA packs will be stored in the safety trailer.
    - Four work/escape packs will be on the rig floor. Each pack will have a long enough hose to allow unimpaired work activity.
    - Four emergency escape packs will be in the doghouse for emergency evacuation.
    - Hand signals will be used when wearing protective breathing apparatus.
    - Stokes litter or stretcher.
    - Two full OSHA compliant body harnesses
    - A 100 foot long x 5/8 inch OSHA compliant rope
    - One 20 pound ABC fire extinguisher
  - iii. H<sub>2</sub>S Detection & Monitoring Equipment
    - Every person will wear a personal H<sub>2</sub>S and SO<sub>2</sub> monitor at all times while on site. Monitors will not be worn on hats. Monitors will be worn on the front of the waist or chest.
    - A stationary detector with 3 sensors will be in the doghouse.

- Sensors will be installed on the rig floor, bell nipple, and at the end of the flow line or where drilling fluids are discharged.
- Visual alarm will be triggered at 10 ppm.
- Audible alarm will be triggered at 10 ppm.
- Calibration will occur at least every 30 days. Gas sample tubes will be kept in the safety trailer.

iv. Visual Warning System

- Color-coded H<sub>2</sub>S condition sign will be set at the entrance to the pad.
- Color-coded condition flag will be installed to indicate current H<sub>2</sub>S conditions.
- Two wind socks will be installed that will be visible from all sides.

v. Mud Program

- A water based mud with a pH of  $\geq 10$  will be maintained to control corrosion, H<sub>2</sub>S gas returns to the surface, and minimize sulfide stress cracking and embrittlement.
- Drilling mud containing H<sub>2</sub>S gas will be degassed at an optimum location for the rig configuration.
- This gas will be piped into the flare system.
- Enough mud additives will be on location to scavenge and/or neutralize H<sub>2</sub>S where formation pressures are unknown.

vi. Metallurgy

- All equipment that has the potential to be exposed to H<sub>2</sub>S will be suitable for H<sub>2</sub>S service.
- Equipment that will meet these metallurgical standards include the drill string, casing, wellhead, BOP assembly, casing head and spool, rotating head, kill lines, choke, choke manifold and lines, valves, mud-gas separators, DST tools, test units, tubing, flanges, and other related equipment (elastomer packing and seals).

vii. Communication

- Cell phones and/or 2-way radios will be used to communicate from the well site.

d. A remote controlled choke, mud-gas separator, and a rotating head will be installed before drilling or testing any formation expected to contain H<sub>2</sub>S.

Company (432 687-5100) Personnel to be Notified

Gema Volek, Drilling Engineer

Office: (432) 683-8000

Mobile: (785) 312-2092

Local & County Agencies

Eunice\* Fire & Ambulance

911 or (575) 394-3258

Eunice\* Police

911 or (575) 394-2112

\*Well is outside city limits. Eunice is closest (9 miles) city.

Hobbs Fire Marshal

(575) 391-8185

Lea County Sheriff (Lovington)

911 or (575) 396-3611

Lea County Emergency Management (Lovington)

(575) 396-8602

Lea Regional Medical Center Hospital (Hobbs)

(575) 492-5000

State Agencies

NM State Police (Hobbs)

(575) 392-5588

NM Oil Conservation (Hobbs)

(575) 370-3186

NM Oil Conservation (Santa Fe)

(505) 476-3440

NM Department of Transportation (Roswell)

(575) 637-7201

Federal Agencies

BLM Carlsbad Field Office

(575) 234-5972

BLM Hobbs Field Station

(575) 393-3612

National Response Center

(800) 424-8802

US EPA Region 6 (Dallas)

(800) 887-6063

(214) 665-6444

### Veterinarians

Double J Animal Hospital (Hobbs)	(575) 738-0143
Hobbs Animal Clinic & Pet Care (Hobbs)	(575) 392-5563
Dal Paso Animal Hospital (Hobbs)	(575) 397-2286

### Residents within 2 miles

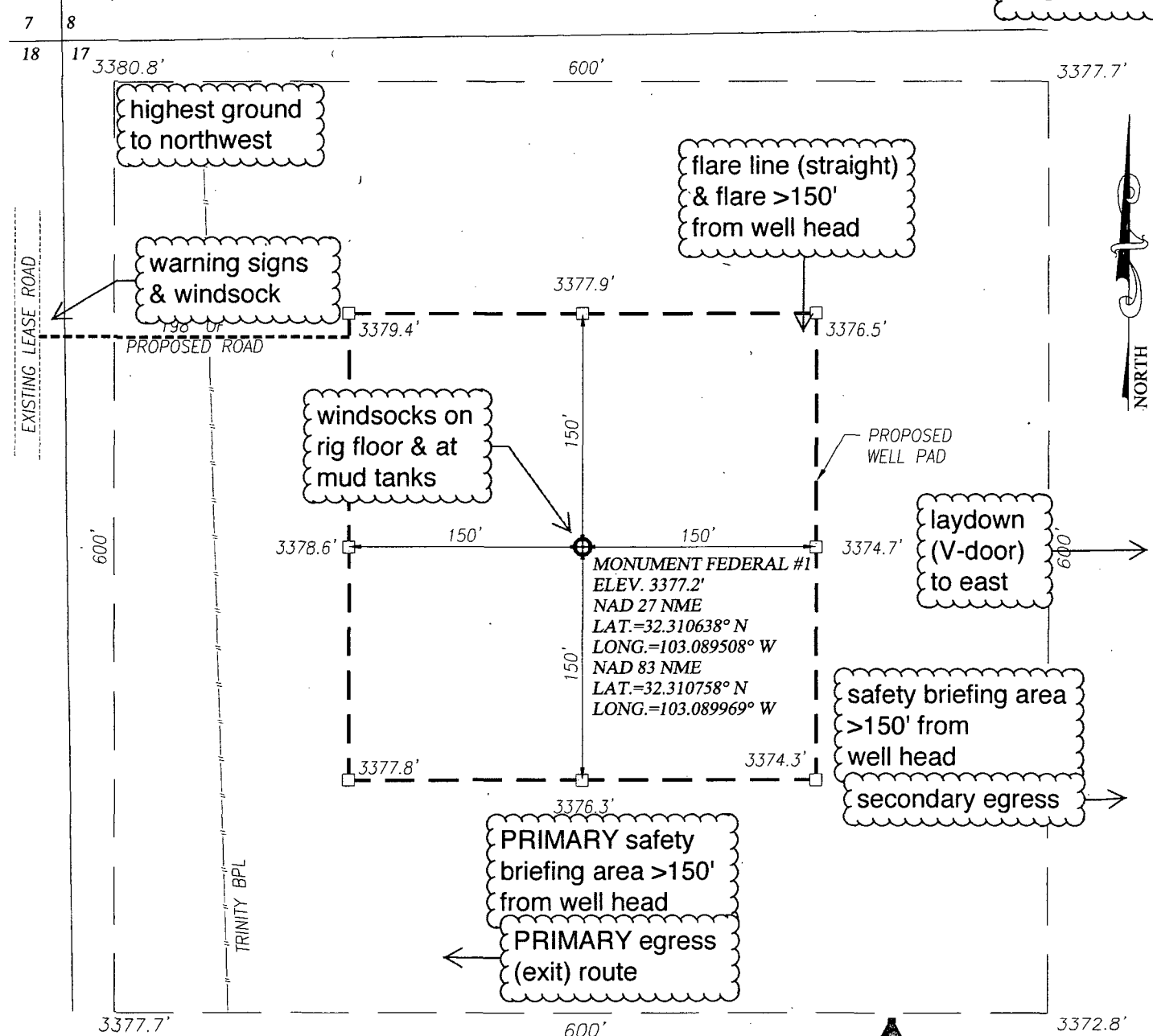
D. K. Boyd (432 686-9110) has a house that is 5,500' NE of the well.

### Air Evacuation

Med Flight Air Ambulance (Albuquerque)	(800) 842-4431
Lifeguard (Albuquerque)	(888) 866-7256

### Safety Contractors (Hobbs)

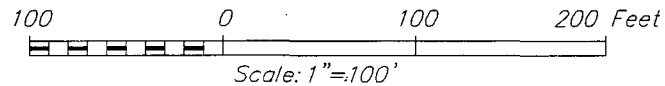
Callaway Safety Equipment Company	(575) 392-4990
DXP Safety	(575) 393-9188
Indian Fire & Safety	(575) 393-3093
Legacy Safety & Consulting	(575) 393-7233
Total Safety	(575) 392-2973



NOTE:  
1) SEE "LOCATION VERIFICATION MAP"  
FOR PROPOSED ROAD LOCATION.

DIRECTIONS TO MONUMENT FEDERAL #1:

FROM THE INTERSECTION OF HWY 18 AND CO. RD. E17  
(SUMMIT RD.) GO EAST ON E-17 APPROX. 2.2 MILES CONTINUE  
EAST THROUGH CATTLE GUARD ROAD BENDS RIGHT AND GO  
SOUTH APPROX. 0.3 MILES TURN LEFT AND GO EAST APPROX.  
2.0 MILES THROUGH CATTLE GUARD TURN RIGHT AND GO SOUTH  
APPROX. 0.75 MILES TO A Y IN ROAD KEEP RIGHT AND GO  
SOUTH APPROX. 1.0 MILES TO PROPOSED ROAD SURVEY TURN  
LEFT AND GO EAST 198' TO LOCATION.



RUBICON OIL AND GAS, LLC

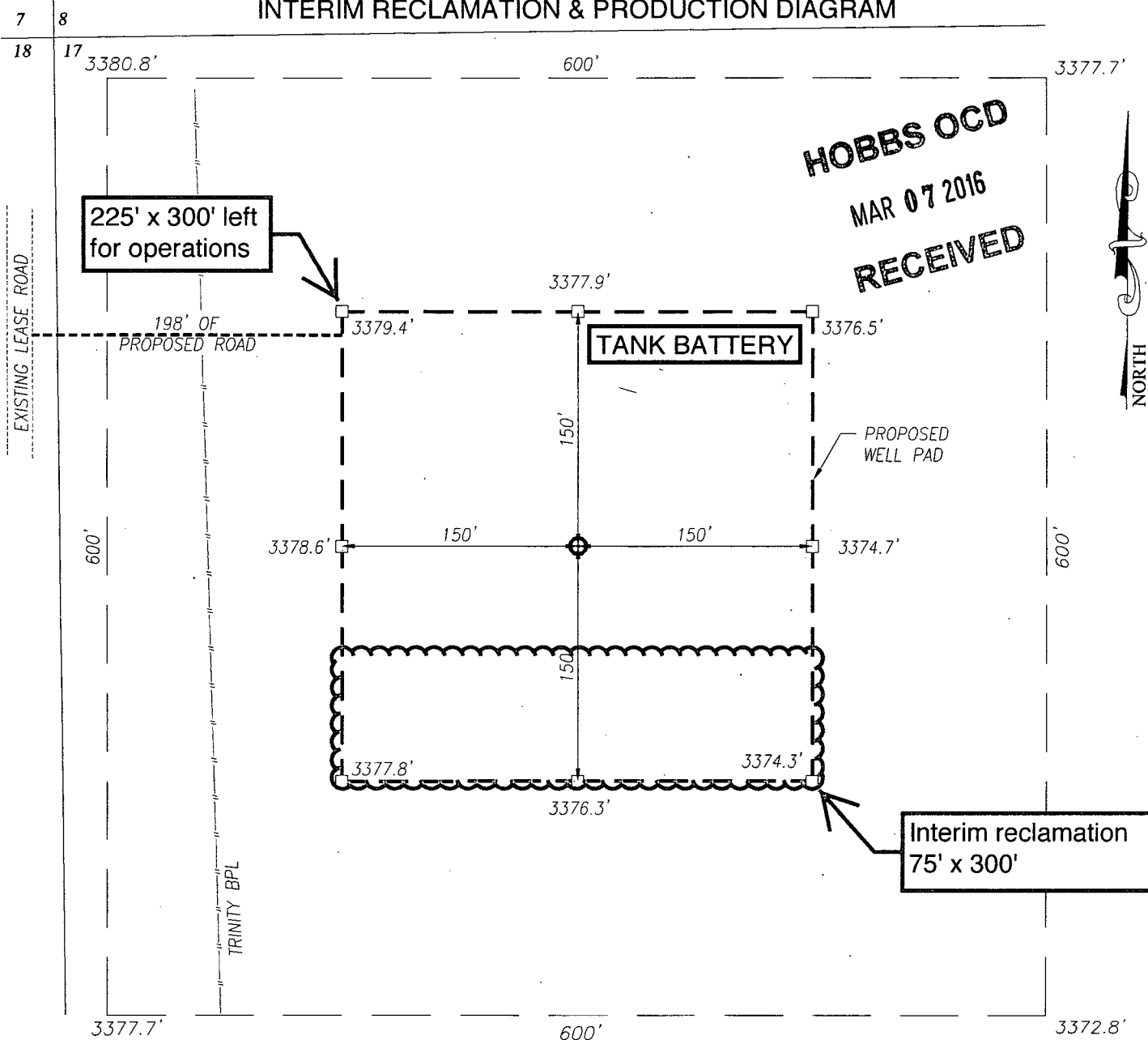
MONUMENT FEDERAL #1 WELL  
LOCATED 330 FEET FROM THE NORTH LINE  
AND 330 FEET FROM THE WEST LINE OF SECTION 17,  
TOWNSHIP 23 SOUTH, RANGE 38 EAST, N.M.P.M.,  
LEA COUNTY, NEW MEXICO

PROVIDING SURVEYING SERVICES  
SINCE 1946  
**JOHN WEST SURVEYING COMPANY**  
412 N. DAL PASO HOBBS, N.M. 88240  
(575) 393-3117 www.jwsc.biz  
TBPLS# 10021000

Survey Date: 11/4/14	CAD Date: 11/21/14	Drawn By: LSL
W.O. No.: 14111072	Rev: .	Rel. W.O.:
		Sheet 1 of 1

# INTERIM RECLAMATION & PRODUCTION DIAGRAM

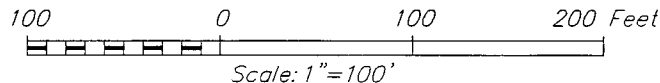
**HOBBS OCD**  
MAR 07 2016  
**RECEIVED**



NOTE:  
1) SEE "LOCATION VERIFICATION MAP"  
FOR PROPOSED ROAD LOCATION.

## DIRECTIONS TO MONUMENT FEDERAL #1:

FROM THE INTERSECTION OF HWY 18 AND CO. RD. E17  
(SUMMIT RD.) GO EAST ON E-17 APPROX. 2.2 MILES CONTINUE  
EAST THROUGH CATTLE GUARD ROAD BENDS RIGHT AND GO  
SOUTH APPROX. 0.3 MILES TURN LEFT AND GO EAST APPROX.  
2.0 MILES THROUGH CATTLE GUARD TURN RIGHT AND GO SOUTH  
APPROX. 0.75 MILES TO A Y IN ROAD KEEP RIGHT AND GO  
SOUTH APPROX. 1.0 MILES TO PROPOSED ROAD SURVEY TURN  
LEFT AND GO EAST 198' TO LOCATION.



**RUBICON OIL AND GAS, LLC**

**MONUMENT FEDERAL #1 WELL**  
**LOCATED 330 FEET FROM THE NORTH LINE**  
**AND 330 FEET FROM THE WEST LINE OF SECTION 17,**  
**TOWNSHIP 23 SOUTH, RANGE 38 EAST, N.M.P.M.,**  
**LEA COUNTY, NEW MEXICO**



PROVIDING SURVEYING SERVICES  
SINCE 1946  
**JOHN WEST SURVEYING COMPANY**  
412 N. DAL PASO HOBBS, N.M. 88240  
(575) 393-3117 www.jwsc.biz  
TBPLS# 10021000

Survey Date: 11/4/14	CAD Date: 11/21/14	Drawn By: LSL
W.O. No.: 14111072	Rev: .	Rel. W.O.: Sheet 1 of 1