

District I
1625 N. French Dr., Hobbs, NM 88240
Phone: (575) 393-6161 Fax: (575) 393-0720
District II
811 S. First St., Artesia, NM 88210
Phone: (575) 748-1283 Fax: (575) 748-9720
District III
1000 Rio Brazos Road, Aztec, NM 87410
Phone: (505) 334-6178 Fax: (505) 334-6170
District IV
1220 S. St. Francis Dr., Santa Fe, NM 87505
Phone: (505) 476-3460 Fax: (505) 476-3462

State of New Mexico
Energy, Minerals & Natural Resources Department
OIL CONSERVATION DIVISION
1220 South St. Francis Dr.
Santa Fe, NM 87505

Form C-102
Revised August 1, 2011
Submit one copy to appropriate
District Office
☐ AMENDED REPORT

BS OCP
MAR 08 2016
RECEIVED

WELL LOCATION AND ACREAGE DEDICATION PLAT

¹ API Number 30-015-43113	² Pool Code 97741	³ Pool Name WL-015, G-09, S253335K; BS
⁴ Property Code 314082	⁵ Property Name TELE DELUX 32 STATE	⁶ Well Number 701H
⁷ OGRID No. 270329	⁸ Operator Name ENDURANCE RESOURCES, LLC	⁹ Elevation 3300.9

" Surface Location

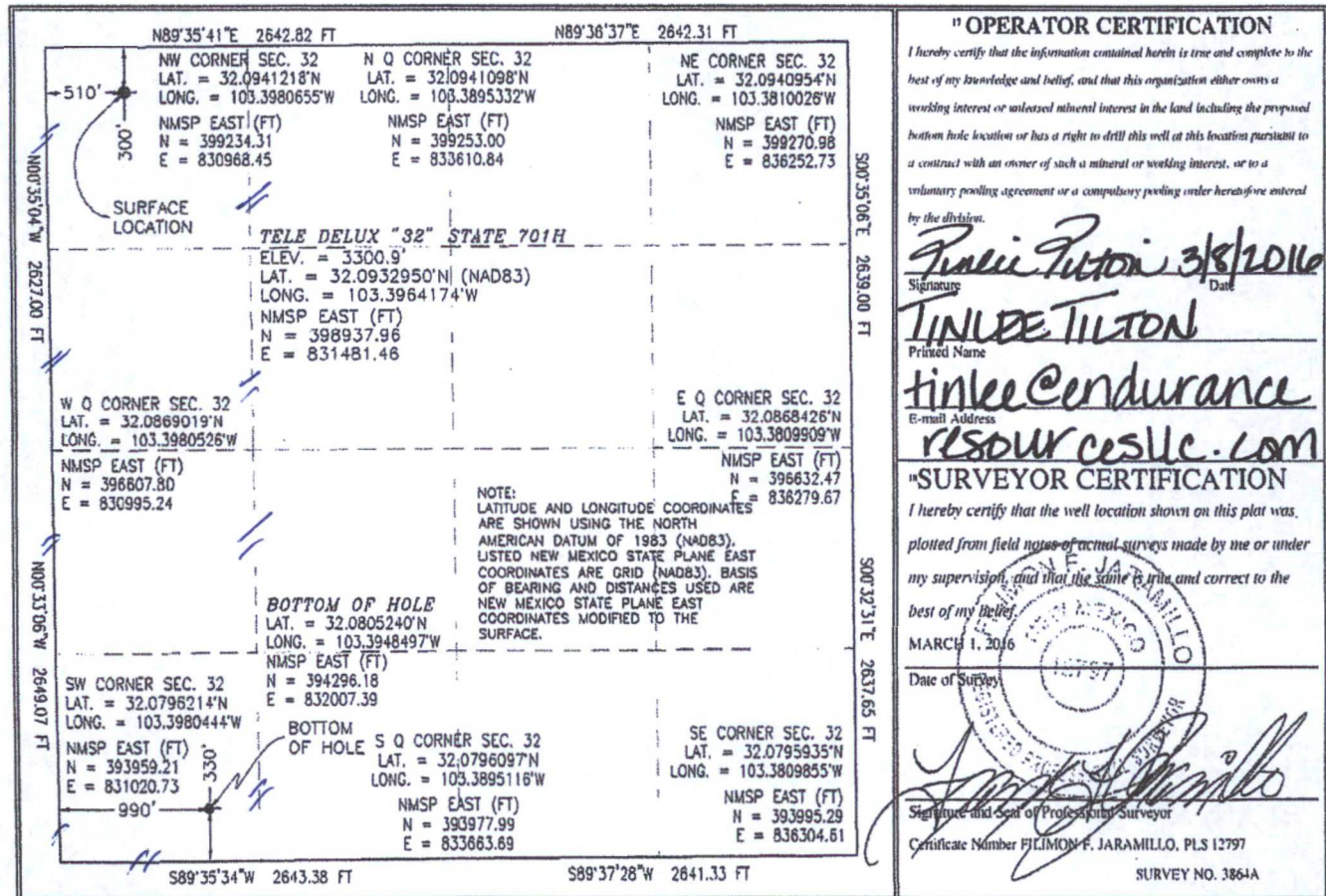
UL or lot no.	Section	Township	Range	Lot Idn	Feet from the	North/South line	Feet from the	East/West line	County
D	32	25 S	35 E		300	NORTH	510	WEST	LEA

" Bottom Hole Location If Different From Surface

UL or lot no.	Section	Township	Range	Lot Idn	Feet from the	North/South line	Feet from the	East/West line	County
M	32	25 S	35 E		330' 1	SOUTH	990	WEST	LEA

¹⁰ Dedicated Acres 1160	¹¹ Joint or Infill	¹² Consolidation Code	¹³ Order No.
--	-------------------------------	----------------------------------	-------------------------

No allowable will be assigned to this completion until all interests have been consolidated or a non-standard unit has been approved by the division.



MAR 08 2016

SITE MAP

EL. 3293.5' 900' EL. 3278.5'

SEC. 29
SEC. 32

EL. 3299.8' EL. 3292.9'

PROPOSED 15 LF ACCESS ROAD
PROPOSED STAKED ACCESS ROAD
PROPOSED STAKED PAD

PROPOSED PAD
BERM
TELE DELUX "32" STATE 1H

TELE DELUX "32" STATE 701H
ELEV. = 3300.9'
3.100± ACRES

150' WEST OFFSET
EL. 3301.5'

LAT. = 32.0932950°N (NAD83)
LONG. = 103.3964174°W
NMSP EAST (FT)
N = 398937.96
E = 831481.46

TELE DELUX "32" STATE 12H

EL. 3301.5' EL. 3298.7'

150' SOUTH OFFSET
EL. 3301.1'

TOPSOIL AREA

EL. 3301.2' 900' EL. 3290.2'



SCALE 1" = 150'

DIRECTIONS TO LOCATION

FROM STATE HIGHWAY 128 AND CR 2 (BATTLE AXE) GO EAST ON STATE HIGHWAY 0.2 OF A MILE, TURN RIGHT (SOUTH) ON LEASE ROAD GO SOUTH 4.2 MILES, TURN LEFT (SOUTHEAST) GO APPROX. 1.2 MILES, ROAD BENDS RIGHT, GO SOUTH 0.7 OF A MILE, TURN LEFT (EAST) GO EAST APPROX. 0.9 OF A MILE, TURN RIGHT (SOUTH) GO SOUTH APPROX. 0.8 OF A MILE, ROAD TURNS RIGHT (WEST) GO WEST APPROX. 0.1 OF A MILE TO AN EXISTING PAD, NORTH OF PAD IS A PROPOSED STAKED CL ACCESS ROAD, FOLLOW ROAD LATHS WEST APPROX. 0.66 OF A MILE, TURN LEFT (SOUTH) GO APPROX. 15' TO THE NORTHEAST PAD CORNER FOR THIS LOCATION.

ENDURANCE RESOURCES, LLC
TELE DELUX "32" STATE 701H
LOCATED 300 FT. FROM THE NORTH LINE
AND 510 FT. FROM THE WEST LINE OF
SECTION 32, TOWNSHIP 25 SOUTH,
RANGE 35 EAST, N.M.P.M.
LEA COUNTY, STATE OF NEW MEXICO

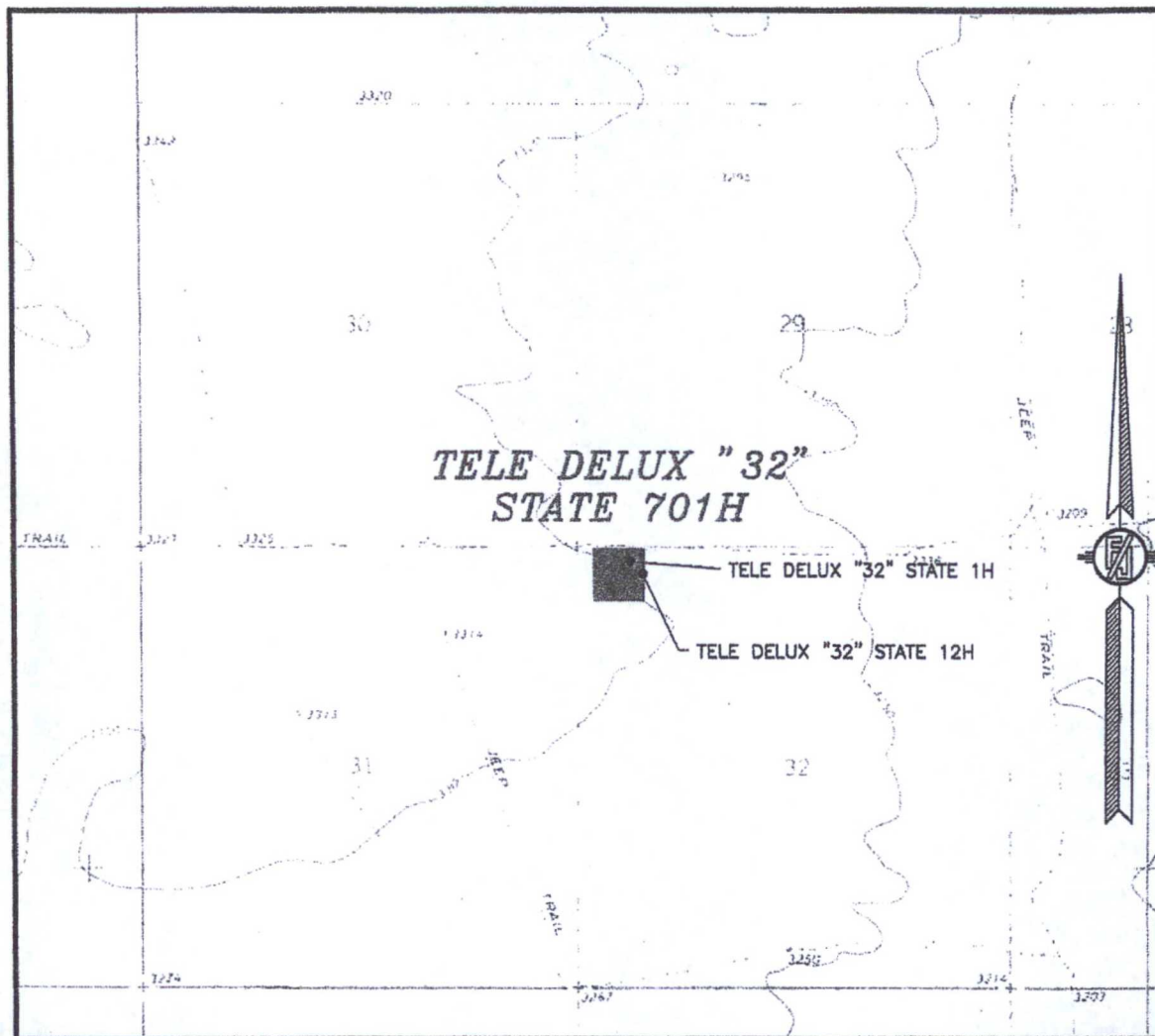
MARCH 1, 2016

SURVEY NO. 3864A

MADRON SURVEYING, INC. 301 SOUTH CANAL (575) 234-3341 CARLSBAD, NEW MEXICO

301 SOUTH CANAL
(575) 234-3341

SECTION 32, TOWNSHIP 25 SOUTH, RANGE 35 EAST, N.M.P.M.
LEA COUNTY, STATE OF NEW MEXICO
LOCATION VERIFICATION MAP



USGS QUAD MAP:
ANDREWS PLACE

NOT TO SCALE

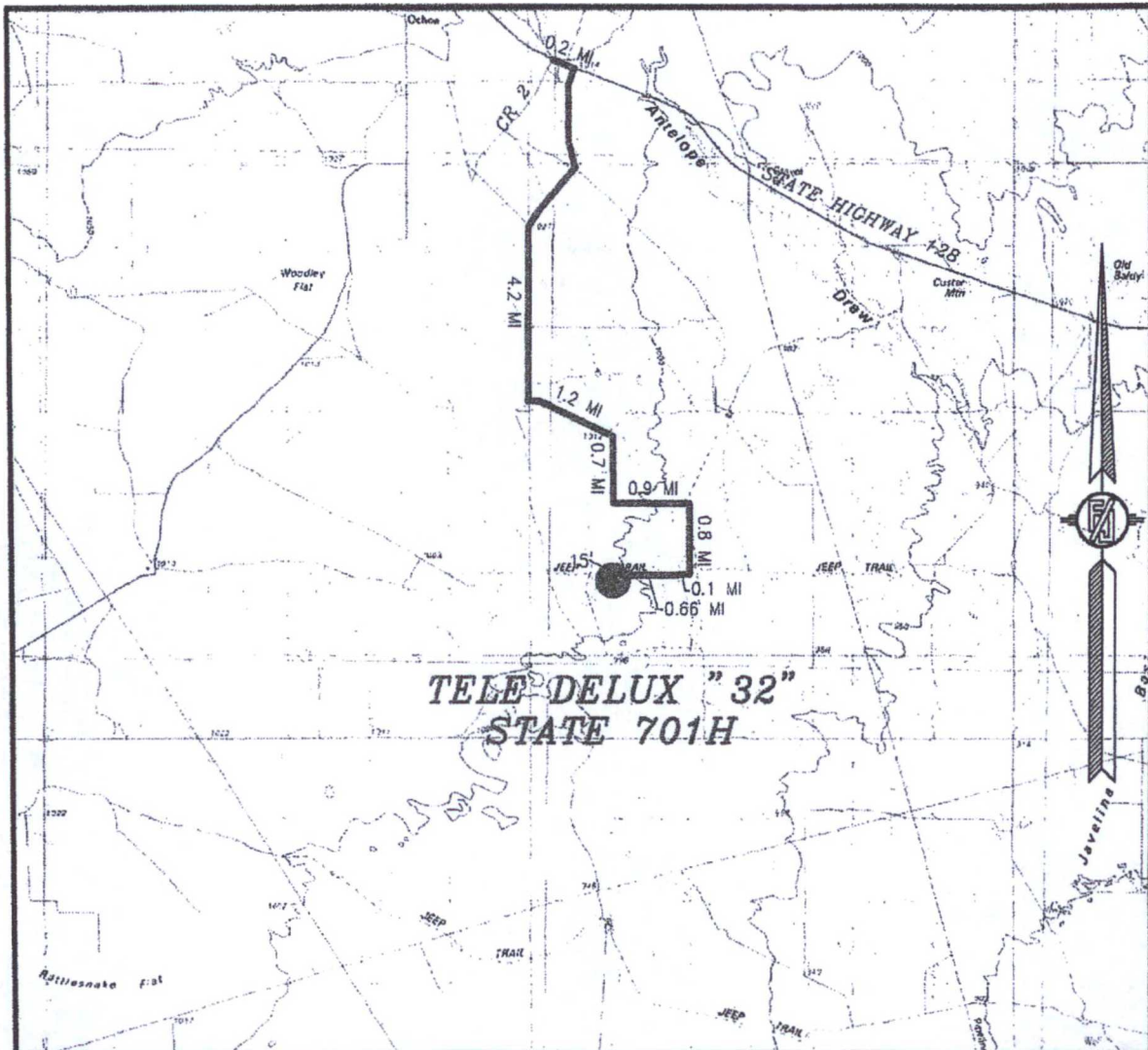
ENDURANCE RESOURCES, LLC
TELE DELUX "32" STATE 701H
LOCATED 300 FT. FROM THE NORTH LINE
AND 510 FT. FROM THE WEST LINE OF
SECTION 32, TOWNSHIP 25 SOUTH,
RANGE 35 EAST, N.M.P.M.
LEA COUNTY, STATE OF NEW MEXICO

MARCH 1, 2016

SURVEY NO. 3864A

MADRON SURVEYING, INC. 301 SOUTH CANAL (575) 234-3341 CARLSBAD, NEW MEXICO

SECTION 32, TOWNSHIP 25 SOUTH, RANGE 35 EAST, N.M.P.M.
LEA COUNTY, STATE OF NEW MEXICO
VICINITY MAP



DISTANCES IN MILES

NOT TO SCALE

DIRECTIONS TO LOCATION

FROM STATE HIGHWAY 128 AND CR 2 (BATTLE AXE) GO EAST ON STATE HIGHWAY 0.2 OF A MILE, TURN RIGHT (SOUTH) ON LEASE ROAD GO SOUTH 4.2 MILES, TURN LEFT (SOUTHEAST) GO APPROX. 1.2 MILES, ROAD BENDS RIGHT, GO SOUTH 0.7 OF A MILE, TURN LEFT (EAST) GO EAST APPROX. 0.9 OF A MILE, TURN RIGHT (SOUTH) GO SOUTH APPROX. 0.8 OF A MILE, ROAD TURNS RIGHT (WEST) GO WEST APPROX. 0.1 OF A MILE TO AN EXISTING PAD, NORTH OF PAD IS A PROPOSED STAKED CL ACCESS ROAD, FOLLOW ROAD LATHS WEST APPROX. 0.66 OF A MILE, TURN LEFT (SOUTH) GO APPROX. 15' TO THE NORTHEAST PAD CORNER FOR THIS LOCATION.

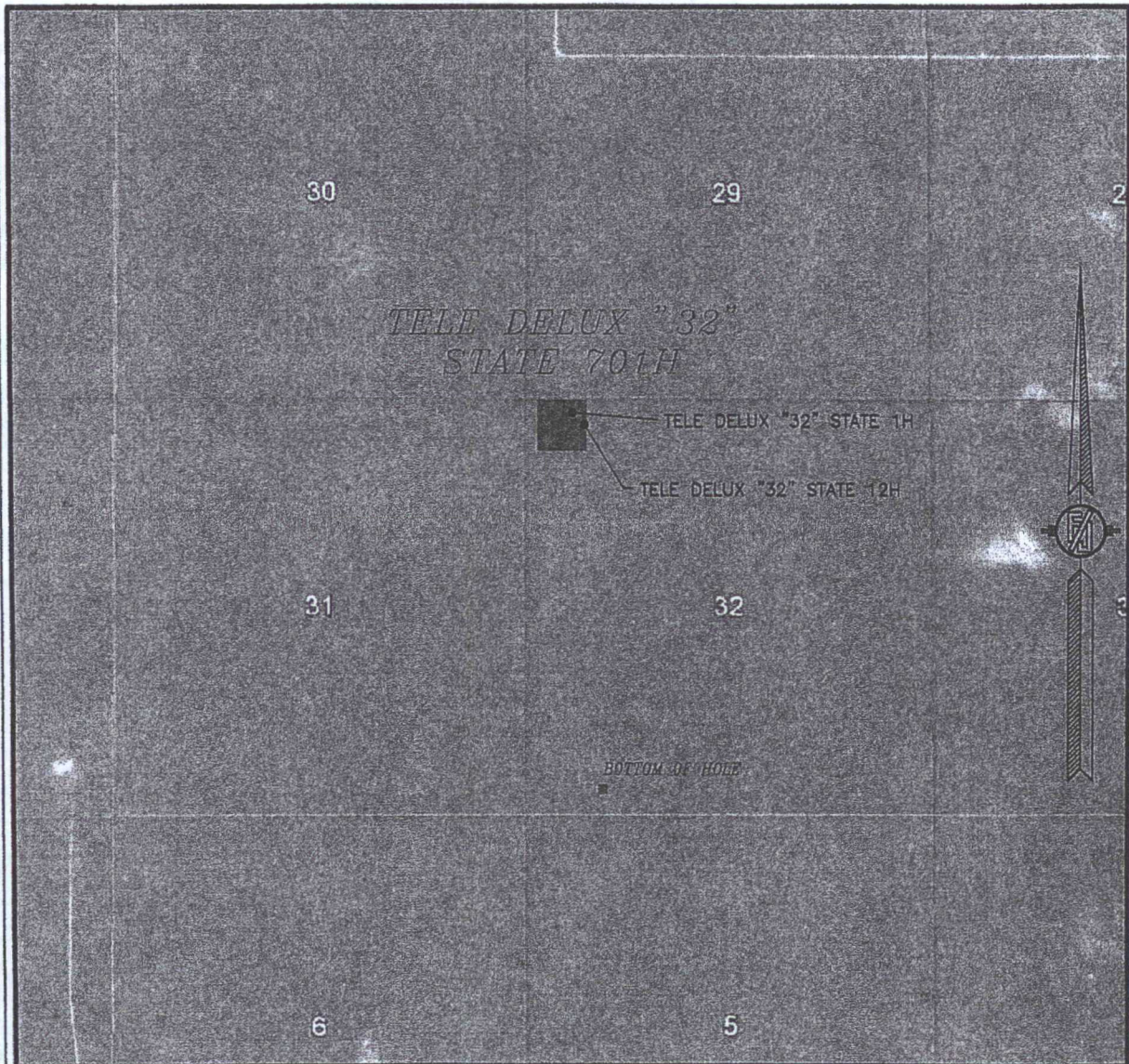
ENDURANCE RESOURCES, LLC
TELE DELUX "32" STATE 701H
LOCATED 300 FT. FROM THE NORTH LINE
AND 510 FT. FROM THE WEST LINE OF
SECTION 32, TOWNSHIP 25 SOUTH,
RANGE 35 EAST, N.M.P.M.
LEA COUNTY, STATE OF NEW MEXICO

MARCH 1, 2016

SURVEY NO. 3864A

MADRON SURVEYING, INC. 301 SOUTH CANAL (575) 234-3341 CARLSBAD, NEW MEXICO

SECTION 32, TOWNSHIP 25 SOUTH, RANGE 35 EAST, N.M.P.M.
LEA COUNTY, STATE OF NEW MEXICO
AERIAL PHOTO



NOT TO SCALE
AERIAL PHOTO:
GOOGLE EARTH
APRIL 2013

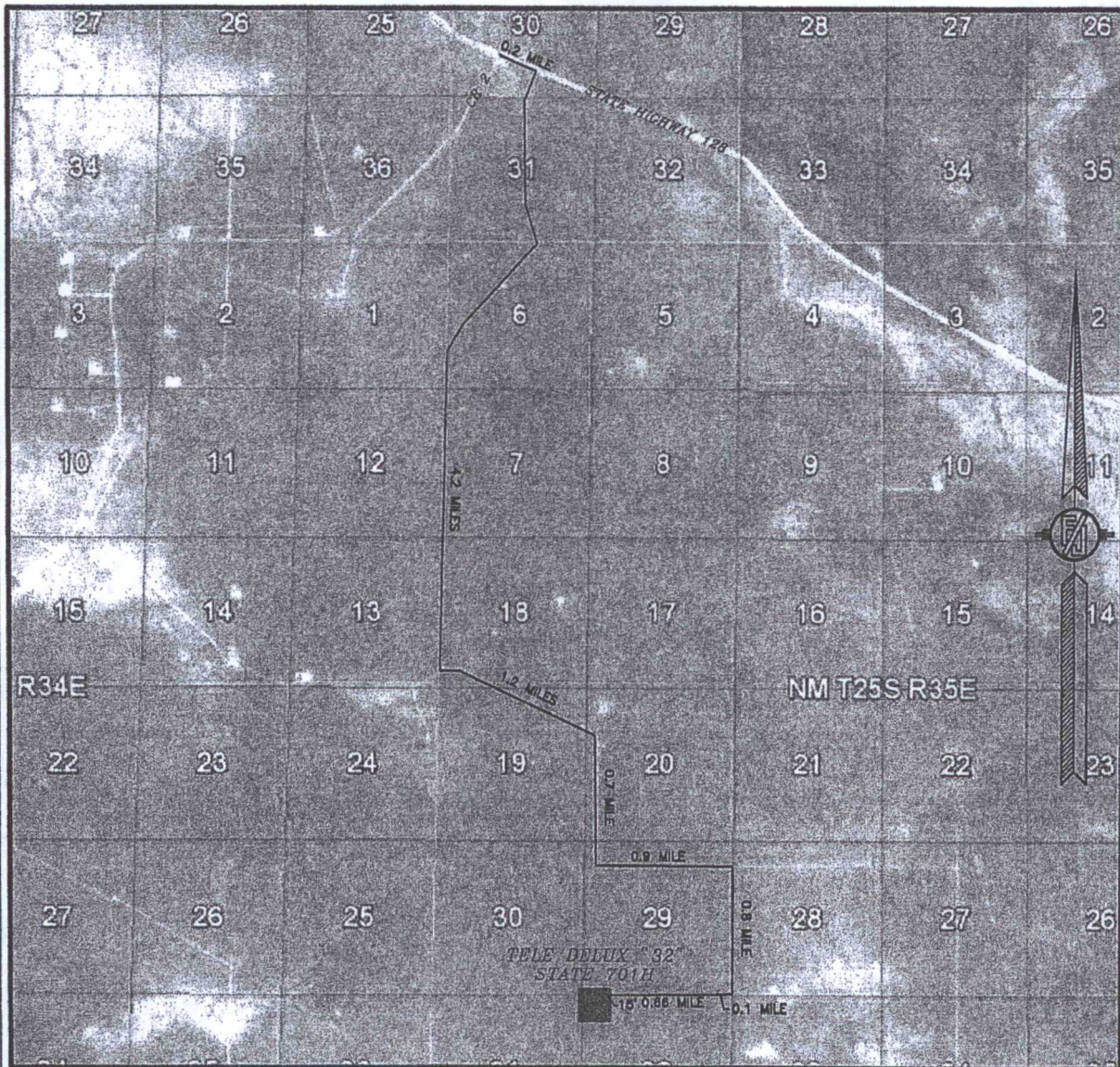
ENDURANCE RESOURCES, LLC
TELE DELUX "32" STATE 701H
LOCATED 300 FT. FROM THE NORTH LINE
AND 510 FT. FROM THE WEST LINE OF
SECTION 32, TOWNSHIP 25 SOUTH,
RANGE 35 EAST, N.M.P.M.
LEA COUNTY, STATE OF NEW MEXICO

MARCH 1, 2016

SURVEY NO. 3864A

MADRON SURVEYING, INC. 301 SOUTH CANAL (575) 234-3341 CARLSBAD, NEW MEXICO

SECTION 32, TOWNSHIP 25 SOUTH, RANGE 35 EAST, N.M.P.M.
LEA COUNTY, STATE OF NEW MEXICO
ACCESS AERIAL ROUTE MAP



NOT TO SCALE
AERIAL PHOTO:
GOOGLE EARTH
FEBRUARY 2014

ENDURANCE RESOURCES, LLC
TELE DELUX "32" STATE 701H
LOCATED 300 FT. FROM THE NORTH LINE
AND 510 FT. FROM THE WEST LINE OF
SECTION 32, TOWNSHIP 25 SOUTH,
RANGE 35 EAST, N.M.P.M.
LEA COUNTY, STATE OF NEW MEXICO

MARCH 1, 2016

SURVEY NO. 3864A

MADRON SURVEYING, INC. 301 SOUTH CANAL (575) 234-3341 CARLSBAD, NEW MEXICO