

HOBBS OCD

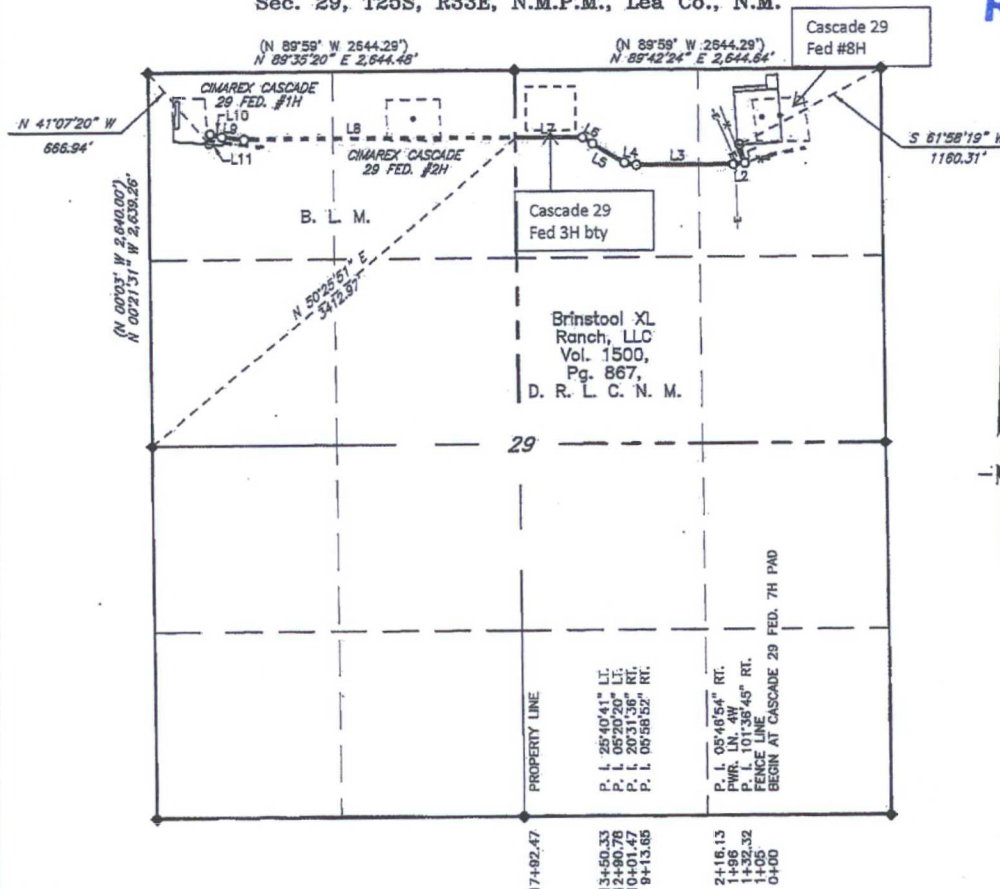
MAR 07 2016

RECEIVED

CIMAREX ENERGY COMPANY

Flowline and Gas Lift Route - Cascade 29 Fed 8 to Cascade 29 Fed 3H bty

Sec. 29, T25S, R33E, N.M.P.M., Lea Co., N.M.



LINE DATA		
NO.	BEARING	DISTANCE
1	S 17°50'31" E	132.32'
2	S 83°46'14" W	83.83'
3	S 89°33'08" W	697.52'
4	N 79°28'00" W	87.82'
5	N 58°56'24" W	289.31'
6	N 64°38'26" W	59.55'
7	S 89°40'53" W	442.14'
8	S 89°40'53" W	2006.11'
9	N 83°42'08" W	161.57'
10	N 77°08'49" W	85.70'
11	S 04°59'39" W	63.43'

SCALE: 1" = 1000'

BEARINGS: GRID NAD 83-NM EAST
DISTANCES: HORIZ. GROUND

LEGEND

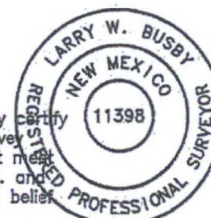
() RECORD DATA

◆ FOUND BRASS CAP "1913"

D.R.L.C.N.M. DEED RECORDS OF LEA CO., NM

I, Larry W. Busby, a N. M. Professional Surveyor, hereby certify that this plat was prepared from an actual ground survey made under my direct supervision, said survey and plat meet the Min. Stds. for Land Surveying in the State of N. M. and are true and correct to the best of my knowledge and belief.

Larry W. Busby NM PS 11398



Copyright 2013 - All Rights Reserved

NO.	REVISION	DATE
JOB NO.:	LS140077	
DWG. NO.:	140077GL1	

PROSPERITY CONSULTANTS, LLC



308 W. Broadway St., Hobbs, NM. 88240 | Firm No.: TX10193838 NM 4655451 | (575) 964-8200

SCALE: 1" = 1000'

DATE: 2/16/14

SURVEYED BY: GB/IE

DRAWN BY: LWB

APPROVED BY: LWB

SHEET : 1 OF 4

MAR 08 2016

CIMAREX ENERGY COMPANY

Gas Lift Line from Cascade 29 Fed. #7H to Cascade 29 Fed. #1H
Sec. 29, T25S, R33E, N.M.P.M., Lea Co., N.M.

DESCRIPTION

A strip of land 30 feet in width and 1,792.47 feet or 108.635 rods in length situated within the Northeast quarter of Section 29, Township 25 South, Range 33 East, N. M. P. M., Lea County, New Mexico and being 15 feet left and 15 feet right of the following described survey of centerline across the land of Brinstool XL Ranch, LLC according to a deed filed for record in Volume 1500 at Page 867 of the Deed Records of Lea County, New Mexico:

Beginning at Engr. Sta. 0+00, a point which lies S 61°58'19" W, 1,160.31 feet from a brass cap, stamped "1913", found for the Northeast corner of the aforementioned Section 29;

Thence S 17°50'31" E, 132.32 feet to Engr. Sta. 1+32.32, a P. I. of 101°36'45" right;

Thence S 83°46'14" W, 83.83 feet to Engr. Sta. 2+16.13, a P. I. of 05°46'54" right;

Thence S 89°33'08" W, 697.52 feet to Engr. Sta. 9+13.65, a P. I. of 05°58'42" right;

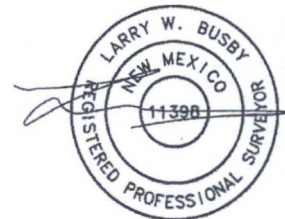
Thence N 79°28'00" W, 87.82 feet to Engr. Sta. 10+01.47, a P. I. of 20°31'36" right;

Thence N 58°56'24" W, 289.31 feet to Engr. Sta. 12+90.78, a P. I. of 05°20'20" left;

Thence N 64°38'26" W, 59.55 feet to Engr. Sta. 13+50.33, a P. I. of 25°40'41" left;

Thence S 89°40'53" W, 442.14 feet to Engr. Sta. 17+92.47, a point on the West boundary line of the above-mentioned Brinstool XL Ranch, LLC property, which lies N 50°25'51" E, 3,412.97 feet from a brass cap, stamped "1913", found for the West quarter corner of the above-mentioned Section 29.

Said strip of land containing 1.234 acres, more or less, all within the Northeast quarter of the aforementioned Section 29.



Copyright 2013 - All Rights Reserved

NO.	REVISION	DATE
JOB NO.:	LS140077	
DWG. NO.:	140077GL2	

PROSPERITY CONSULTANTS, LLC



308 W. Broadway St., Hobbs, NM 88240 | Firm No.: TX 10193838 NM 4655451 | (575) 964-8200

SCALE: 1" = 1000'
DATE: 2/16/14
SURVEYED BY: GB/IE
DRAWN BY: LWB
APPROVED BY: LWB
SHEET : 2 OF 4