

District I
1625 N. French Dr., Hobbs, NM 88240
Phone: (575) 393-6161 Fax: (575) 393-0720
District II
811 S. First St., Artesia, NM 88210
Phone: (575) 748-1283 Fax: (575) 748-9720
District III
1000 Rio Brazos Road, Aztec, NM 87410
Phone: (505) 334-6178 Fax: (505) 334-6170
District IV
1220 S. St. Francis Dr., Santa Fe, NM 87505
Phone: (505) 476-3460 Fax: (505) 476-3462

State of New Mexico **HOBBS OCD**
Energy, Minerals & Natural Resources Department
OIL CONSERVATION DIVISION **MAR 11 2016**
1220 South St. Francis Dr.
Santa Fe, NM 87505 **RECEIVED**

Form C-102
Revised August 1, 2011
Submit one copy to appropriate
District Office
☐ AMENDED REPORT

WELL LOCATION AND ACREAGE DEDICATION PLAT

¹ API Number 30-029-43122	² Pool Code 97086	³ Pool Name WVC-029 G08 92535340; PS
⁴ Property Code 314082	⁵ Property Name TELE DELUX 32 STATE	
⁷ OGRID No. 270329	⁸ Operator Name ENDURANCE RESOURCES, LLC	
		⁶ Well Number 503H
		⁹ Elevation 3262.7

" Surface Location

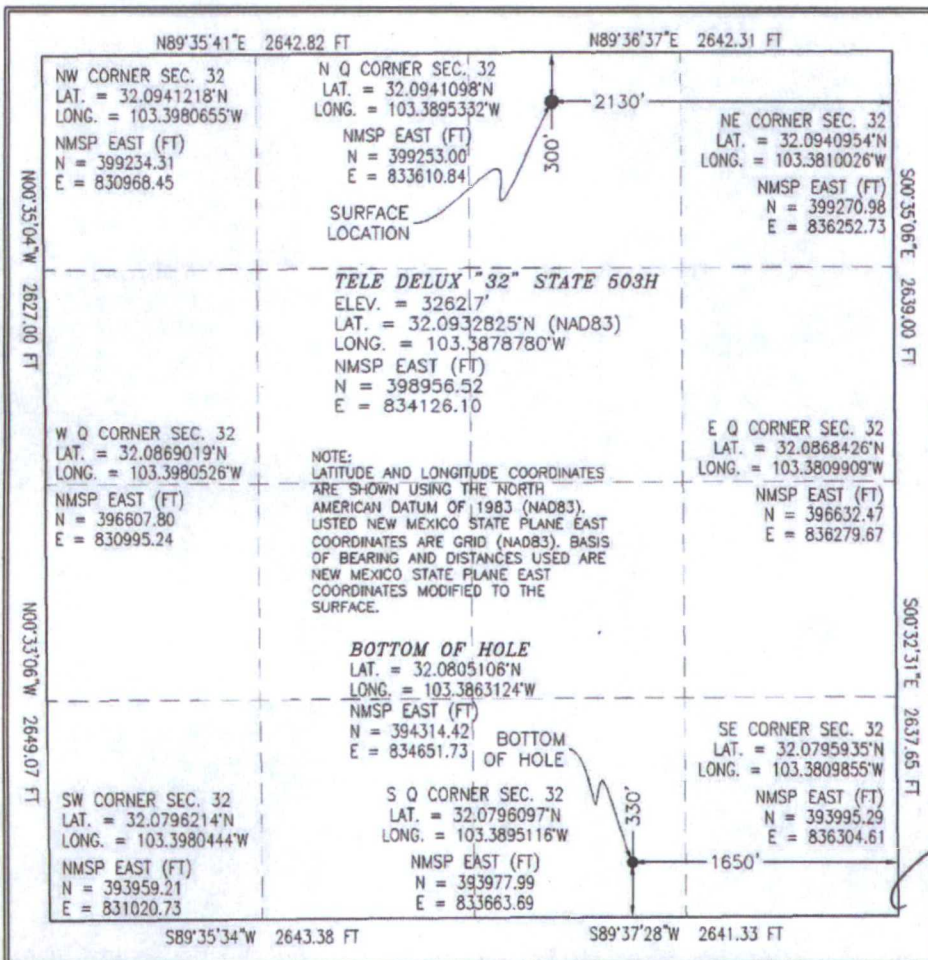
UL or lot no.	Section	Township	Range	Lot Idn	Feet from the	North/South line	Feet from the	East/West line	County
B	32	25 S	35 E		300	NORTH	2130	EAST	LEA

" Bottom Hole Location If Different From Surface

UL or lot no.	Section	Township	Range	Lot Idn	Feet from the	North/South line	Feet from the	East/West line	County
O	32	25 S	35 E		330	SOUTH	1650	EAST	LEA

¹² Dedicated Acres 1100	¹³ Joint or Infill	¹⁴ Consolidation Code	¹⁵ Order No.
--	-------------------------------	----------------------------------	-------------------------

No allowable will be assigned to this completion until all interests have been consolidated or a non-standard unit has been approved by the division.



" OPERATOR CERTIFICATION

I hereby certify that the information contained herein is true and complete to the best of my knowledge and belief, and that this organization either owns a working interest or unleased mineral interest in the land including the proposed bottom hole location or has a right to drill this well at this location pursuant to a contract with an owner of such a mineral or working interest, or to a voluntary pooling agreement or a compulsory pooling order heretofore entered by the division.

Signature **Tinlee Tilton** Date **3/9/2016**

Printed Name **TINLEE TILTON**

E-mail Address **tinlee@endurance**

resourcesllc.com

" SURVEYOR CERTIFICATION

I hereby certify that the well location shown on this plat was plotted from field notes of actual surveys made by me or under my supervision, and that the same is true and correct to the best of my belief.

MARCH 11 2016

Date of Survey

Signature and Seal of Professional Surveyor **FILIMON F. JARAMILLO**

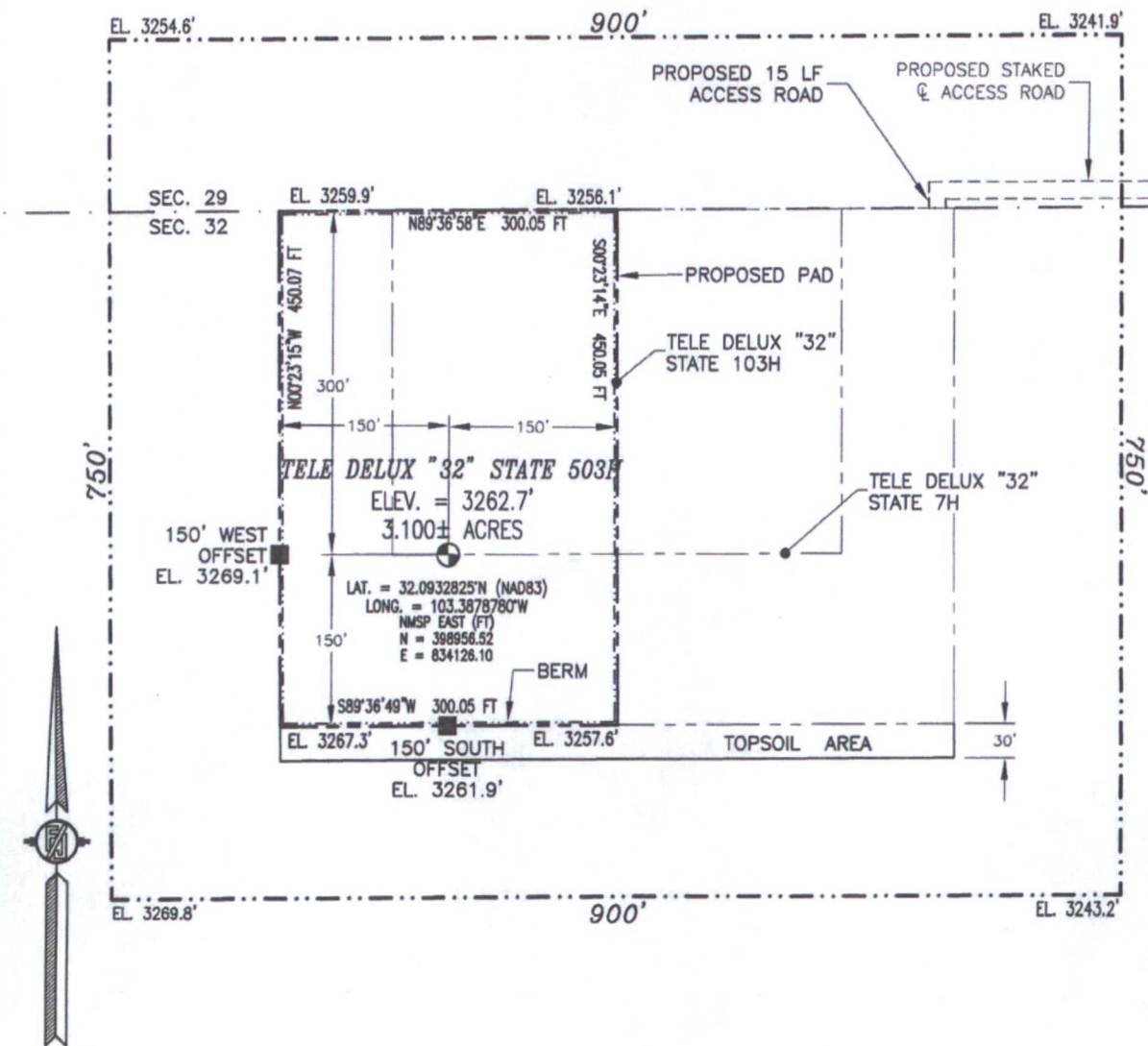
Certificate Number **FILIMON F. JARAMILLO, PLS 12797**

SURVEY NO. 3871A

MAR 14 2016

SECTION 32, TOWNSHIP 25 SOUTH, RANGE 35 EAST, N.M.P.M.
LEA COUNTY, STATE OF NEW MEXICO
SITE MAP

NOTE: LATITUDE AND LONGITUDE COORDINATES ARE SHOWN USING THE NORTH AMERICAN DATUM OF 1983 (NAD83). LISTED NEW MEXICO STATE PLANE EAST COORDINATES ARE GRID (NAD83). BASIS OF BEARING AND DISTANCES USED ARE NEW MEXICO STATE PLANE EAST COORDINATES MODIFIED TO THE SURFACE



015 75 150 300

SCALE 1" = 150'

DIRECTIONS TO LOCATION

FROM STATE HIGHWAY 128 AND CR 2 (BATTLE AXE) GO EAST ON STATE HIGHWAY 0.2 OF A MILE, TURN RIGHT (SOUTH) ON LEASE ROAD GO SOUTH 4.2 MILES, TURN LEFT (SOUTHEAST) GO APPROX. 1.2 MILES, ROAD BENDS RIGHT, GO SOUTH 0.7 OF A MILE, TURN LEFT (EAST) GO EAST APPROX. 0.9 OF A MILE, TURN RIGHT (SOUTH) GO SOUTH APPROX. 0.8 OF A MILE, ROAD TURNS RIGHT (WEST) GO WEST APPROX. 0.1 OF A MILE TO AN EXISTING PAD, NORTH OF PAD IS A PROPOSED STAKED & ACCESS ROAD, FOLLOW ROAD LATHS WEST APPROX. 0.16 OF A MILE, TURN LEFT (SOUTH) GO APPROX. 15' TO THE NORTHEAST PAD CORNER FOR THIS LOCATION.

ENDURANCE RESOURCES, LLC
TELE DELUX "32" STATE 503H
LOCATED 300 FT. FROM THE NORTH LINE
AND 2130 FT. FROM THE EAST LINE OF
SECTION 32, TOWNSHIP 25 SOUTH,
RANGE 35 EAST, N.M.P.M.
LEA COUNTY, STATE OF NEW MEXICO

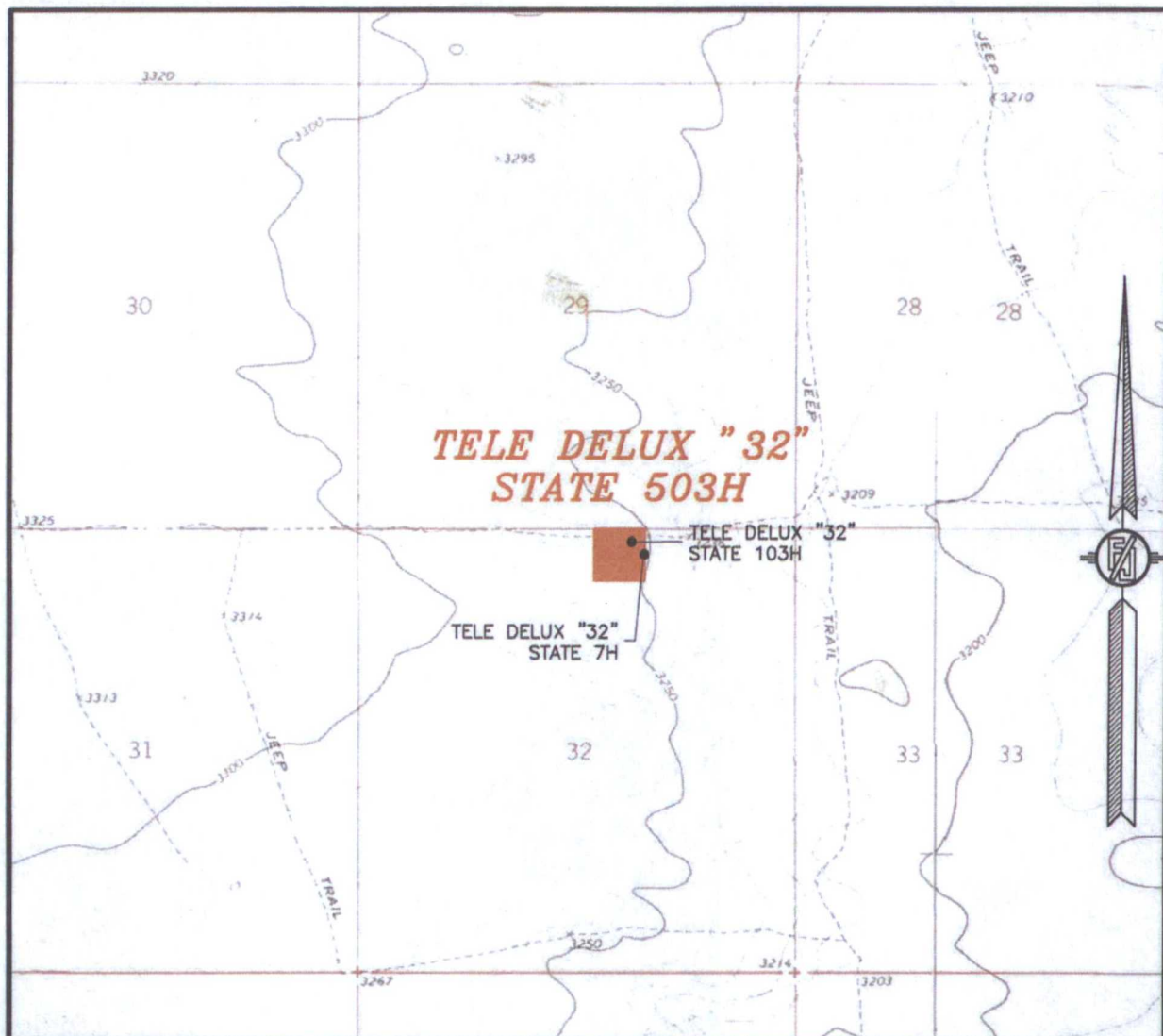
MARCH 1, 2016

SURVEY NO. 3871A

MADRON SURVEYING, INC. 301 SOUTH CANAL (575) 234-3341

CARLSBAD, NEW MEXICO

SECTION 32, TOWNSHIP 25 SOUTH, RANGE 35 EAST, N.M.P.M.
LEA COUNTY, STATE OF NEW MEXICO
LOCATION VERIFICATION MAP



USGS QUAD MAP:
ANDREWS PLACE

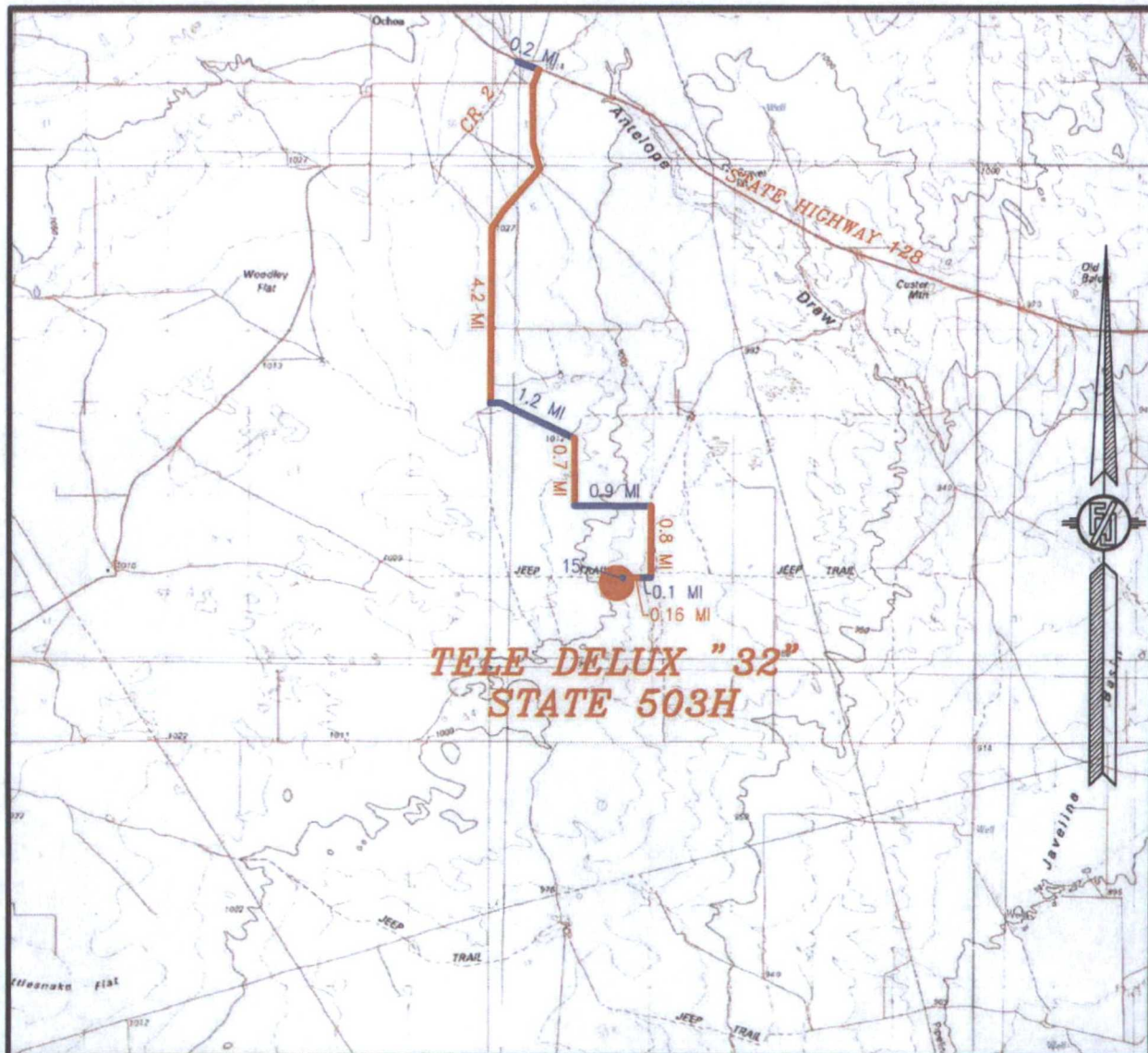
NOT TO SCALE

ENDURANCE RESOURCES, LLC
TELE DELUX "32" STATE 503H
LOCATED 300 FT. FROM THE NORTH LINE
AND 2130 FT. FROM THE EAST LINE OF
SECTION 32, TOWNSHIP 25 SOUTH,
RANGE 35 EAST, N.M.P.M.
LEA COUNTY, STATE OF NEW MEXICO

MARCH 1, 2016

MADRON SURVEYING, INC. 301 SOUTH CANAL (575) 234-3341 SURVEY NO. 3871A
CARLSBAD, NEW MEXICO

SECTION 32, TOWNSHIP 25 SOUTH, RANGE 35 EAST, N.M.P.M.
LEA COUNTY, STATE OF NEW MEXICO
VICINITY MAP



DISTANCES IN MILES

NOT TO SCALE

DIRECTIONS TO LOCATION

FROM STATE HIGHWAY 128 AND CR 2 (BATTLE AXE) GO EAST ON STATE HIGHWAY 0.2 OF A MILE, TURN RIGHT (SOUTH) ON LEASE ROAD GO SOUTH 4.2 MILES, TURN LEFT (SOUTHEAST) GO APPROX. 1.2 MILES, ROAD BENDS RIGHT, GO SOUTH 0.7 OF A MILE, TURN LEFT (EAST) GO EAST APPROX. 0.9 OF A MILE, TURN RIGHT (SOUTH) GO SOUTH APPROX. 0.8 OF A MILE, ROAD TURNS RIGHT (WEST) GO WEST APPROX. 0.1 OF A MILE TO AN EXISTING PAD, NORTH OF PAD IS A PROPOSED STAKED $\frac{1}{4}$ ACCESS ROAD, FOLLOW ROAD LATHS WEST APPROX. 0.16 OF A MILE, TURN LEFT (SOUTH) GO APPROX. 15' TO THE NORTHEAST PAD CORNER FOR THIS LOCATION.

ENDURANCE RESOURCES, LLC
TELE DELUX "32" STATE 503H
LOCATED 300 FT. FROM THE NORTH LINE
AND 2130 FT. FROM THE EAST LINE OF
SECTION 32, TOWNSHIP 25 SOUTH,
RANGE 35 EAST, N.M.P.M.
LEA COUNTY, STATE OF NEW MEXICO

MARCH 1, 2016

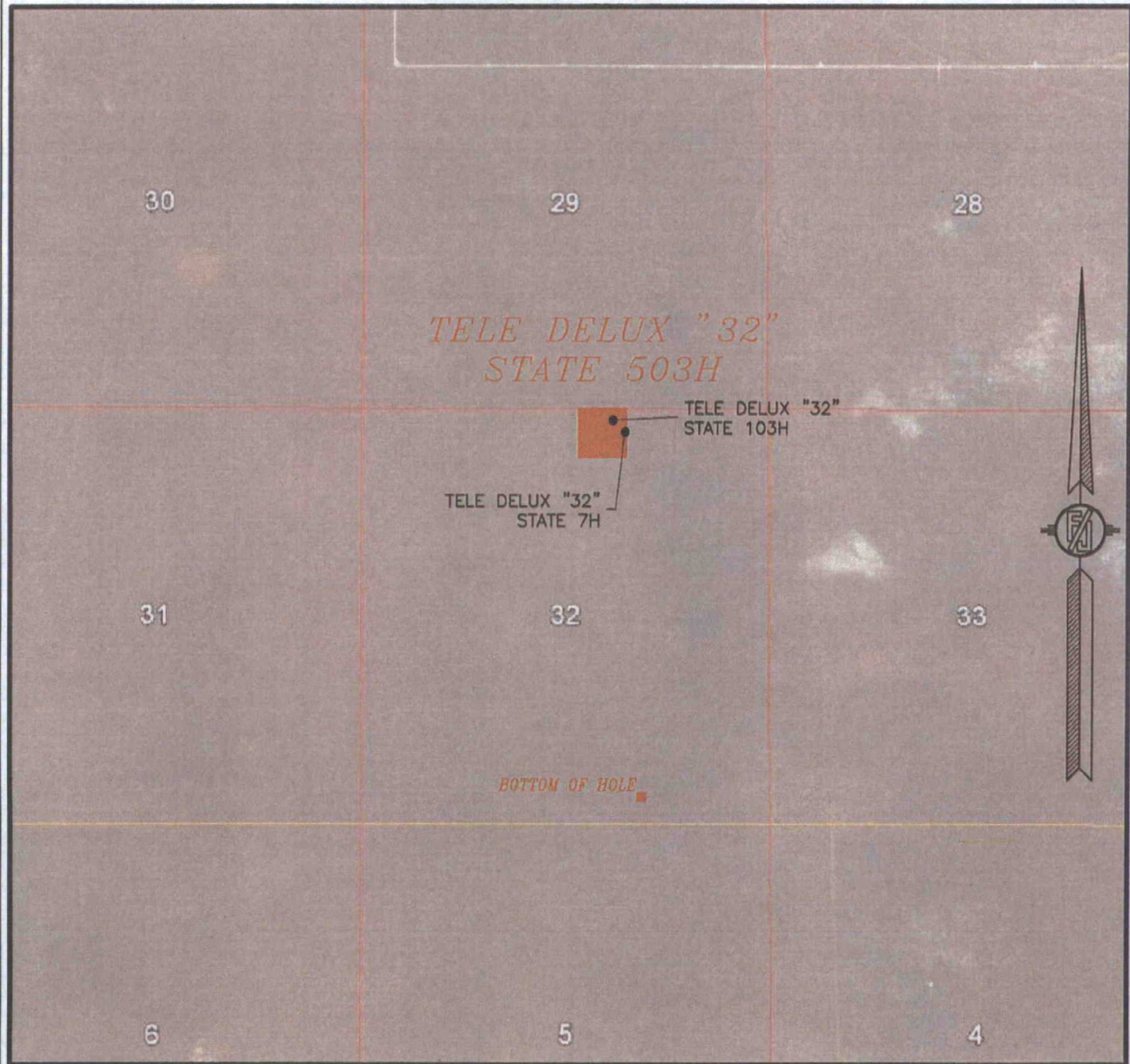
MADRON SURVEYING, INC.

301 SOUTH CANAL
(575) 234-3341

CARLSBAD, NEW MEXICO

SURVEY NO. 3871A

SECTION 32, TOWNSHIP 25 SOUTH, RANGE 35 EAST, N.M.P.M.
LEA COUNTY, STATE OF NEW MEXICO
AERIAL PHOTO



NOT TO SCALE
AERIAL PHOTO:
GOOGLE EARTH
APRIL 2013

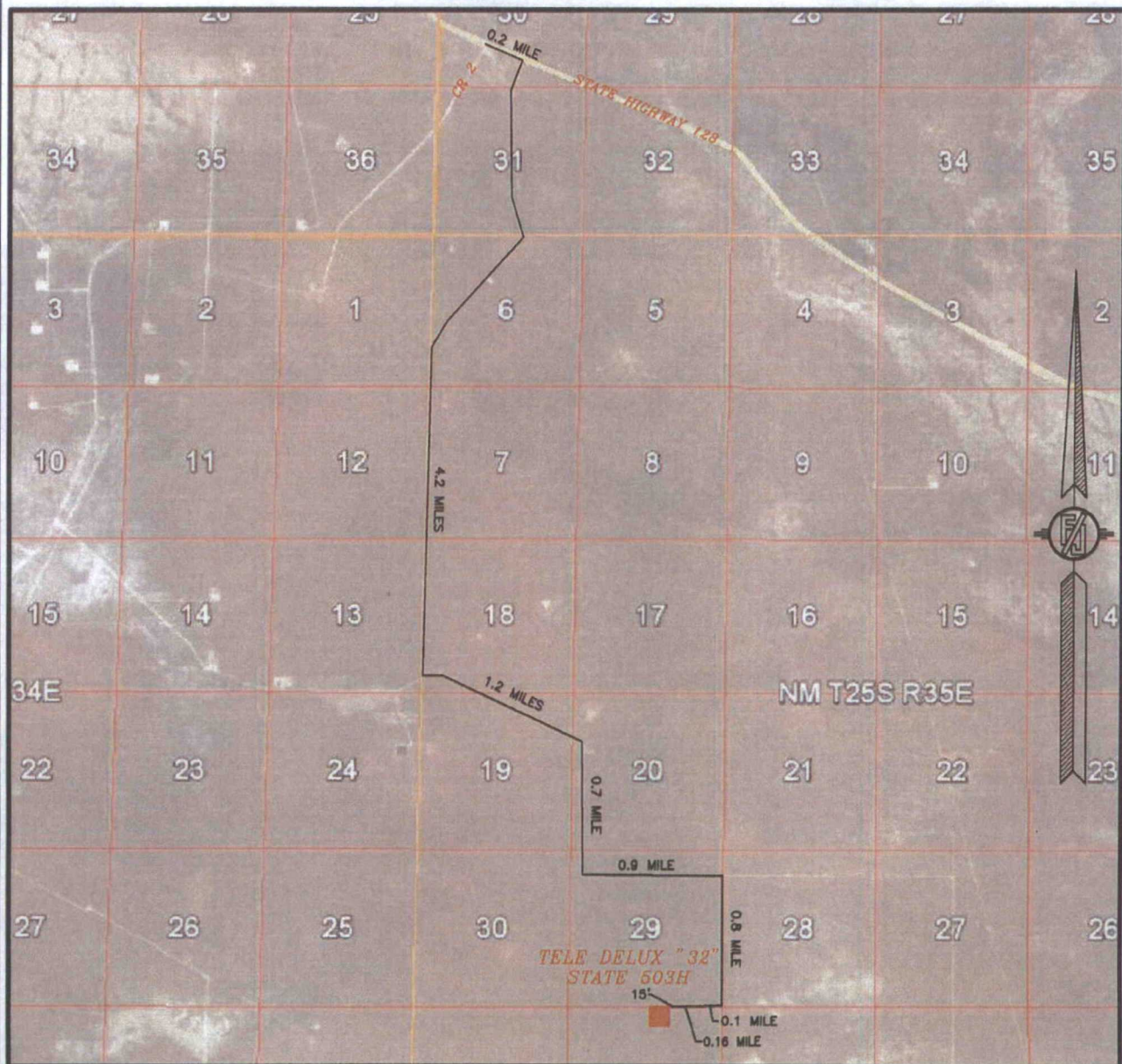
ENDURANCE RESOURCES, LLC
TELE DELUX "32" STATE 503H
LOCATED 300 FT. FROM THE NORTH LINE
AND 2130 FT. FROM THE EAST LINE OF
SECTION 32, TOWNSHIP 25 SOUTH,
RANGE 35 EAST, N.M.P.M.
LEA COUNTY, STATE OF NEW MEXICO

MARCH 1, 2016

SURVEY NO. 3871A

MADRON SURVEYING, INC. 301 SOUTH CANAL (575) 234-3341 CARLSBAD, NEW MEXICO

SECTION 32, TOWNSHIP 25 SOUTH, RANGE 35 EAST, N.M.P.M.
LEA COUNTY, STATE OF NEW MEXICO
ACCESS AERIAL ROUTE MAP



NOT TO SCALE
AERIAL PHOTO:
GOOGLE EARTH
FEBRUARY 2014

ENDURANCE RESOURCES, LLC
TELE DELUX "32" STATE 503H
LOCATED 300 FT. FROM THE NORTH LINE
AND 2130 FT. FROM THE EAST LINE OF
SECTION 32, TOWNSHIP 25 SOUTH,
RANGE 35 EAST, N.M.P.M.
LEA COUNTY, STATE OF NEW MEXICO

MARCH 1, 2016

SURVEY NO. 3871A

MADRON SURVEYING, INC. 301 SOUTH CANAL CARLSBAD, NEW MEXICO
(575) 234-3341