

District I  
1625 N. French Dr., Hobbs, NM 88240  
Phone: (575) 393-6161 Fax: (575) 393-0720  
District II  
811 S. First St., Artesia, NM 88210  
Phone: (575) 748-1283 Fax: (575) 748-9720  
District III  
1000 Rio Brazos Road, Aztec, NM 87410  
Phone: (505) 334-6178 Fax: (505) 334-6170  
District IV  
1220 S. St. Francis Dr., Santa Fe, NM 87505  
Phone: (505) 476-3460 Fax: (505) 476-3462

State of New Mexico  
Energy, Minerals & Natural Resources Department  
OIL CONSERVATION DIVISION  
1220 South St. Francis Dr.  
Santa Fe, NM 87505

HOBBS OCD  
MAR 21 2016  
RECEIVED

Form C-102  
Revised August 1, 2011  
Submit one copy to appropriate  
District Office

☐ AMENDED REPORT

WELL LOCATION AND ACREAGE DEDICATION PLAT

<sup>1</sup> API Number <b>30-025-43135</b>		<sup>2</sup> Pool Code <b>59477</b>		<sup>3</sup> Pool Name <b>TONTO, WEST BONE SPRING, WEST</b>	
<sup>4</sup> Property Code <b>316046</b>		<sup>5</sup> Property Name <b>CRAZY WOLF 1 B2MD FEDERAL</b>			<sup>6</sup> Well Number <b>1H</b>
<sup>7</sup> OGRID NO. <b>14744</b>		<sup>8</sup> Operator Name <b>MEWBOURNE OIL COMPANY</b>			<sup>9</sup> Elevation <b>3670</b>
<sup>10</sup> Surface Location					
UL or lot no. <b>M</b>	Section <b>1</b>	Township <b>19S</b>	Range <b>32E</b>	Lot Idn <b>185</b>	Feet From the <b>660</b>
		North/South line <b>SOUTH</b>		East/West line <b>WEST</b>	
				County <b>LEA</b>	
<sup>11</sup> Bottom Hole Location If Different From Surface					
UL or lot no. <b>4</b>	Section <b>1</b>	Township <b>19S</b>	Range <b>32E</b>	Lot Idn <b>330</b>	Feet from the <b>660</b>
		North/South line <b>NORTH</b>		East/West line <b>WEST</b>	
				County <b>LEA</b>	
<sup>12</sup> Dedicated Acres <b>160</b>		<sup>13</sup> Joint or Infill		<sup>14</sup> Consolidation Code	
				<sup>15</sup> Order No.	

No allowable will be assigned to this completion until all interest have been consolidated or a non-standard unit has been approved by the division.

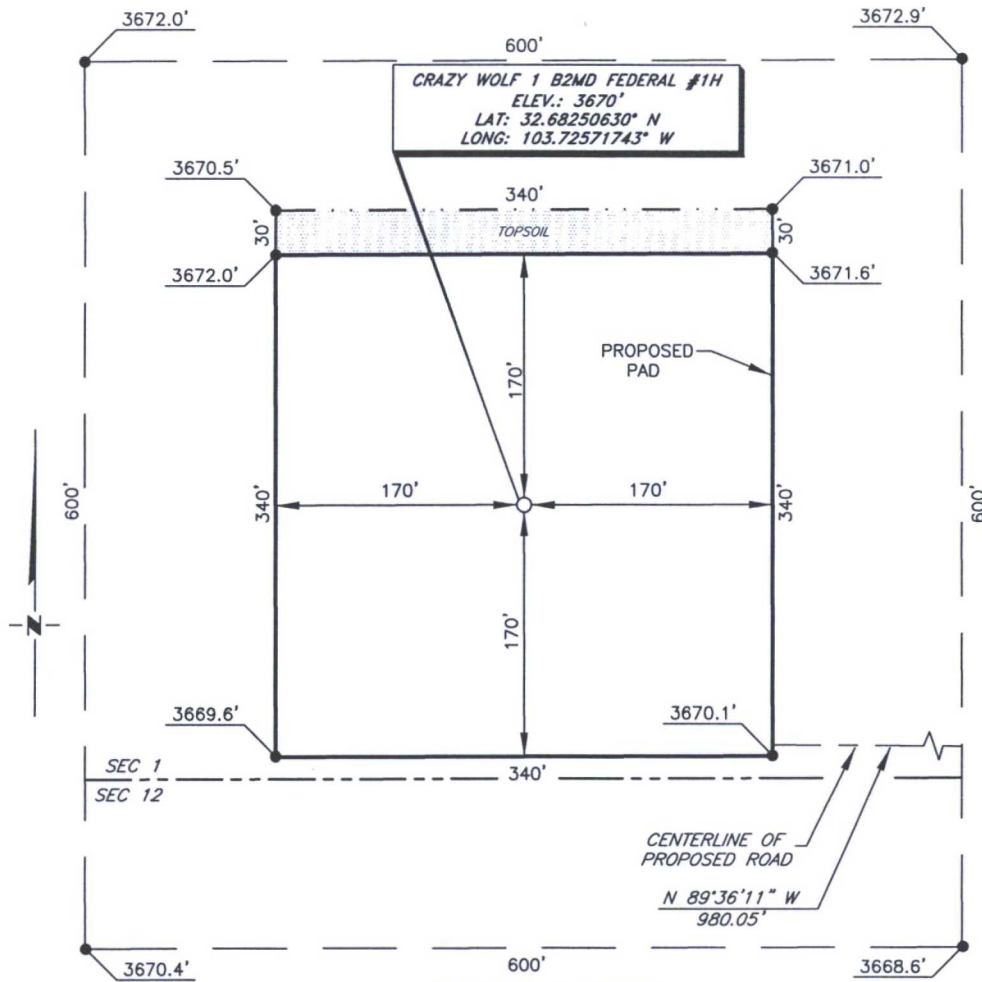
<sup>16</sup>		<sup>17</sup> OPERATOR CERTIFICATION I hereby certify that the information contained herein is true and complete to the best of my knowledge and belief, and that this organization either owns a working interest or unleased mineral interest in the land including the proposed bottom hole location or has a right to drill this well at this location pursuant to a contract with an owner of such a mineral or working interest, or to a voluntary pooling agreement or a compulsory pooling order heretofore entered by the division. Signature: <i>Brady Bishop</i> Date: <i>9-24-14</i> Printed Name: <b>BRADY BISHOP</b> E-mail Address:
<sup>18</sup> SURVEYOR CERTIFICATION I hereby certify that the well location shown on this plat was plotted from field notes of actual surveys made by me or under my supervision, and that the same is true and correct to the best of my belief. <b>9-8-2014</b> Date of Survey Signature and Seal of Professional Surveyor: <i>Robert M. Howett</i> <b>19680</b> Certificate Number		

RRC - Firm No.: TX 10193838 NM 4655451 - Job No.: LS140374

MAR 22 2016

# EXHIBIT "3"

MEWBOURNE OIL COMPANY  
CRAZY WOLF 1 B2MD FEDERAL #1H  
(185' FSL & 660' FWL)  
SECTION 1, T19S, R32E  
N. M. P. M., LEA CO., NEW MEXICO



## DIRECTIONS TO LOCATION

From the intersection of CR-126A (Maljamar Road), and CR-126 (Dry Lake Road), go East on lease road approx. 5.1 miles to a "Y";

Keep left and go East turning North approx. 0.8 miles to a lease road;

Turn left on lease road and go West 0.5 miles to a "T";

Turn right and go North approx. 0.2 miles to a "T";

Turn right and go East 0.2 miles;

Turn left and go North turning Northwest approx. 0.4 miles to existing Endurance Resources Fed 12 #4 pad;

Go to the Southwest corner existing pad and proposed road;

Go Northwest on proposed road approx. 0.2 miles to Crazy Wolf 1 B2NC Fed Corn #1;

Go to Southwest corner of pad and proposed road;

Go West approx. 0.2 miles to this location.

SCALE: 1" = 100'  
0 50 100  
BEARINGS ARE  
NAD 27 GRID - NM EAST  
DISTANCES ARE  
GROUND.

Firm No.: TX 10193838 NM 4655451

Copyright 2014 - All Rights Reserved

NO.	REVISION	DATE
JOB NO.:	LS140374	
DWG. NO.:	140374_PAD	

# RRC

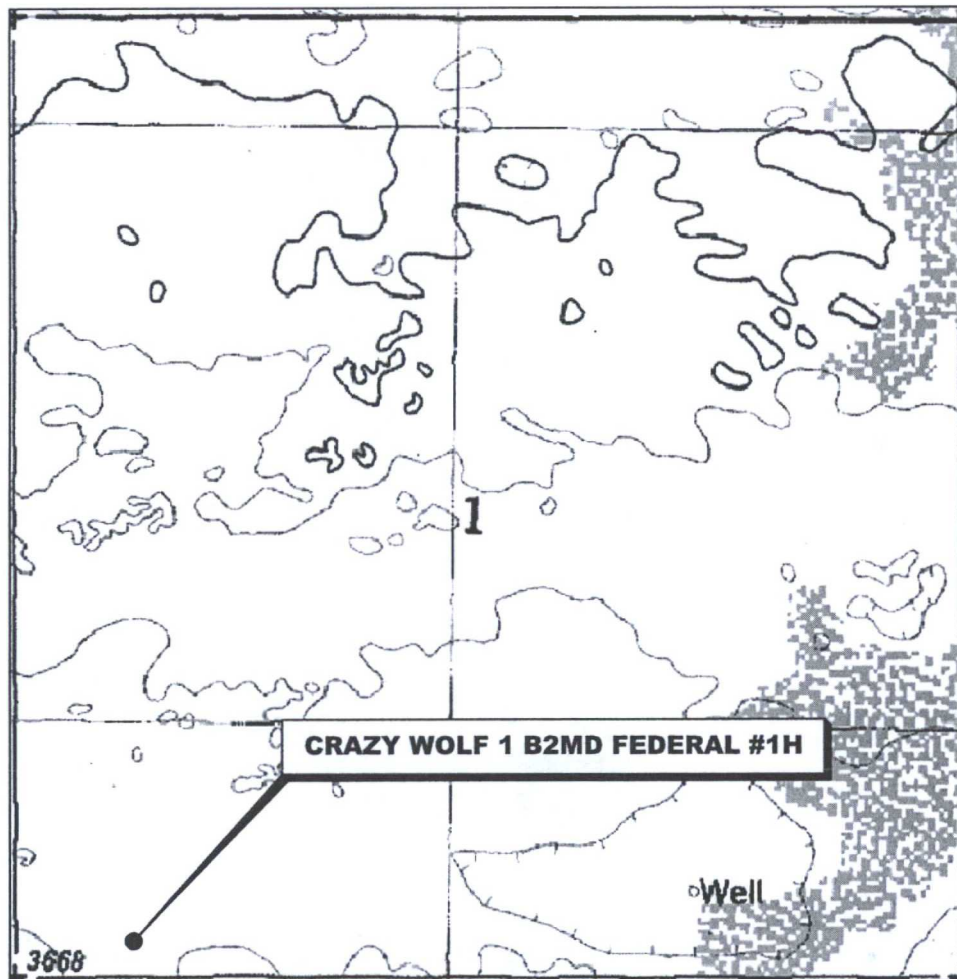
308 W. BROADWAY ST., HOBBS, NM 88240 (575) 964-8200

SCALE: 1" = 100'
DATE: 9-8-2014
SURVEYED BY: BK/SM
DRAWN BY: JF
APPROVED BY: RMH
SHEET : 1 OF 2



# EXHIBIT "3A"

## LOCATION VERIFICATION MAP



*SECTION 1, TWP. 19 SOUTH, RGE. 32 EAST,  
N. M. P. M., LEA COUNTY, NEW MEXICO*

OPERATOR: Mewbourne Oil Company  
LEASE: Crazy Wolf 1 B2MD Federal  
WELL NO.: 1H  
ELEVATION: 3670'

LOCATION: 185' FSL & 660' FWL  
CONTOUR INTERVAL: 10'  
USGS TOPO. SOURCE MAP:  
Laguna Gatuna NW, N.M. (1984)

Firm No.: TX 10193838 NM 4655451

Copyright 2014 - All Rights Reserved

NO.	REVISION	DATE
JOB NO.: LS140374		
DWG. NO.: 140374LVM		

# RRC

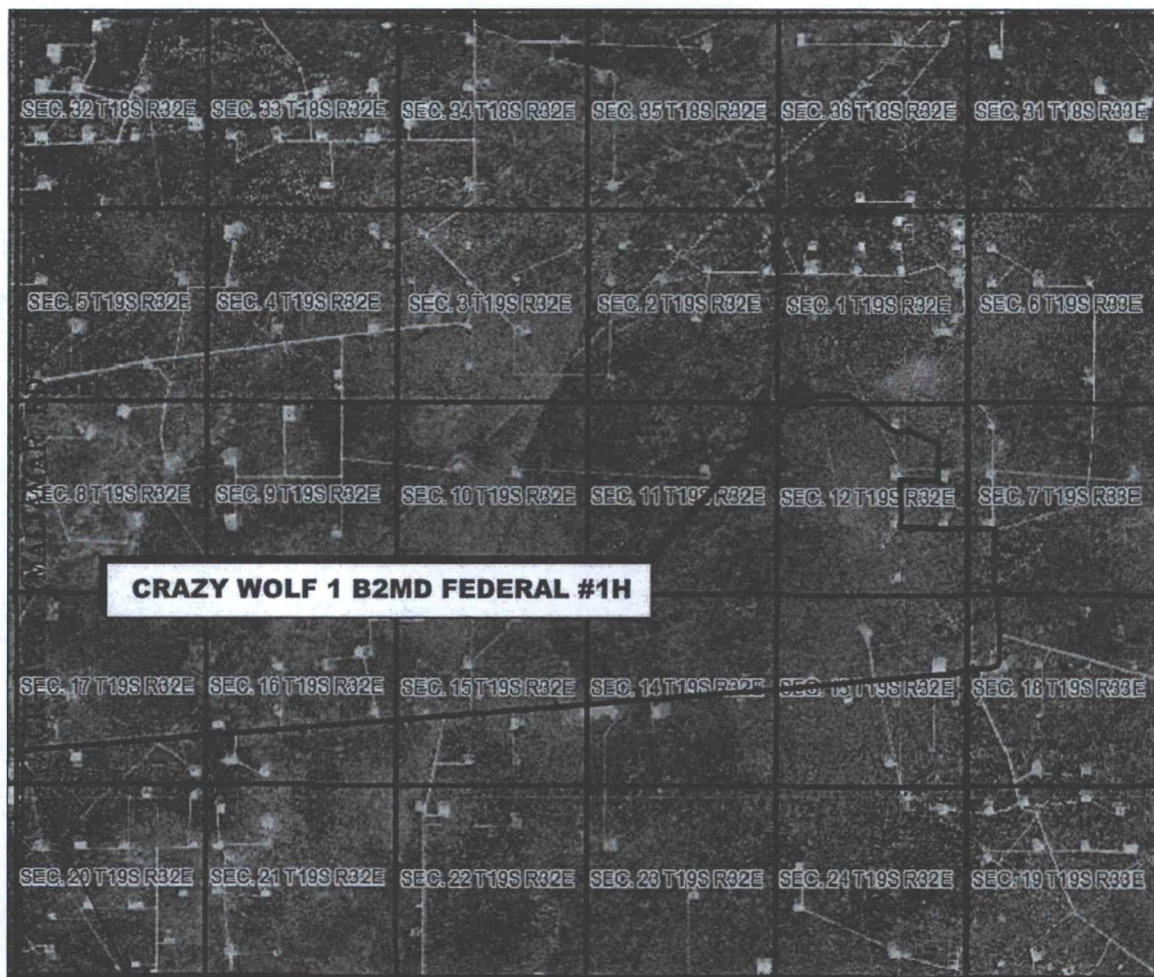
308 W. BROADWAY ST., HOBBS, NM 88240 (575) 964-8200

SCALE: 1"=1000'
DATE: 9-8-2014
SURVEYED BY: BK/SM
DRAWN BY: JF
APPROVED BY: RMH
SHEET : 1 OF 1

# EXHIBIT "3B"

## VICINITY MAP

NOT TO SCALE



**CRAZY WOLF 1 B2MD FEDERAL #1H**

INTERSECTION OF  
CR-126A (MALJAMAR) &  
CR-126 (DRY LAKE)

*SECTION 1, TWP. 19 SOUTH, RGE. 32 EAST,  
N. M. P. M., LEA COUNTY, NEW MEXICO*

OPERATOR: Mewbourne Oil Company  
LEASE: Crazy Wolf 1 B2MD Federal  
WELL NO.: 1H

LOCATION: 185' FSL & 660' FWL  
ELEVATION: 3670'

Firm No.: TX 10193838 NM 4655451

Copyright 2014 - All Rights Reserved

NO.	REVISION	DATE
JOB NO.:	LS140374	
DWG. NO.:	140374VM	

# RRC

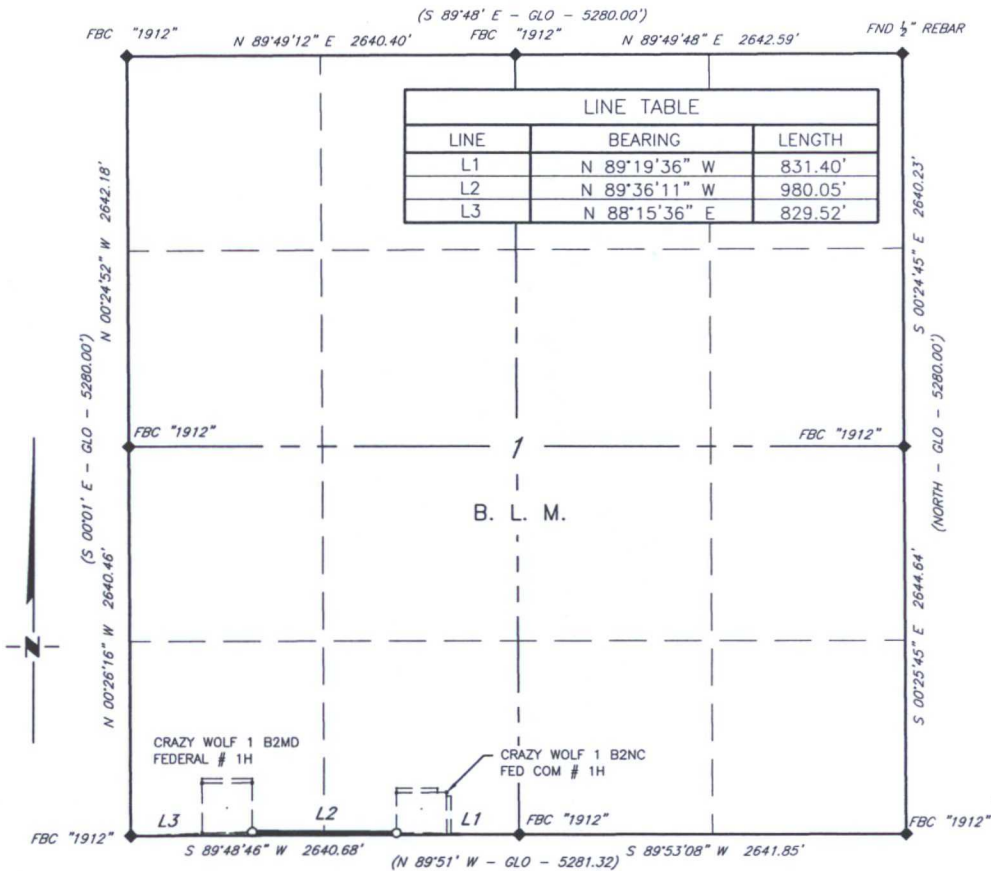
308 W. BROADWAY ST., HOBBS, NM 88240 (575) 964-8200

SCALE: N.T.S.
DATE: 9-8-2014
SURVEYED BY: BK/SM
DRAWN BY: JF
APPROVED BY: RMH
SHEET : 1 OF 1



# EXHIBIT "3C"

## MEWBOURNE OIL COMPANY PROPOSED ACCESS ROAD EASEMENT FROM THE CRAZY WOLF 1 B2NC FED COM #1H TO THE CRAZY WOLF 1 B2MD FEDERAL #1H SECTION 1, T19S, R32E N. M. P. M., LEA CO., NEW MEXICO



Firm No.: TX 10193838 NM 4655451

NO.	REVISION	DATE
JOB NO.:	LS140374	
DWG. NO.:	140374EL	

# RRC

308 W. BROADWAY ST., HOBBS, NM 88240 (575) 964-8200

SCALE: 1"=1000'
DATE: 9-2-14
SURVEYED BY: GB/IE
DRAWN BY: RMH
APPROVED BY: RMH
SHEET : 1 of 1

Exhibit "3D"

Access Road

NM T19S R32E

Google earth

Imagery Date: 2/13/2014 32°40'02.17" N 103°45'06.42" W ele 3650 ft eye alt 30547 ft

1996

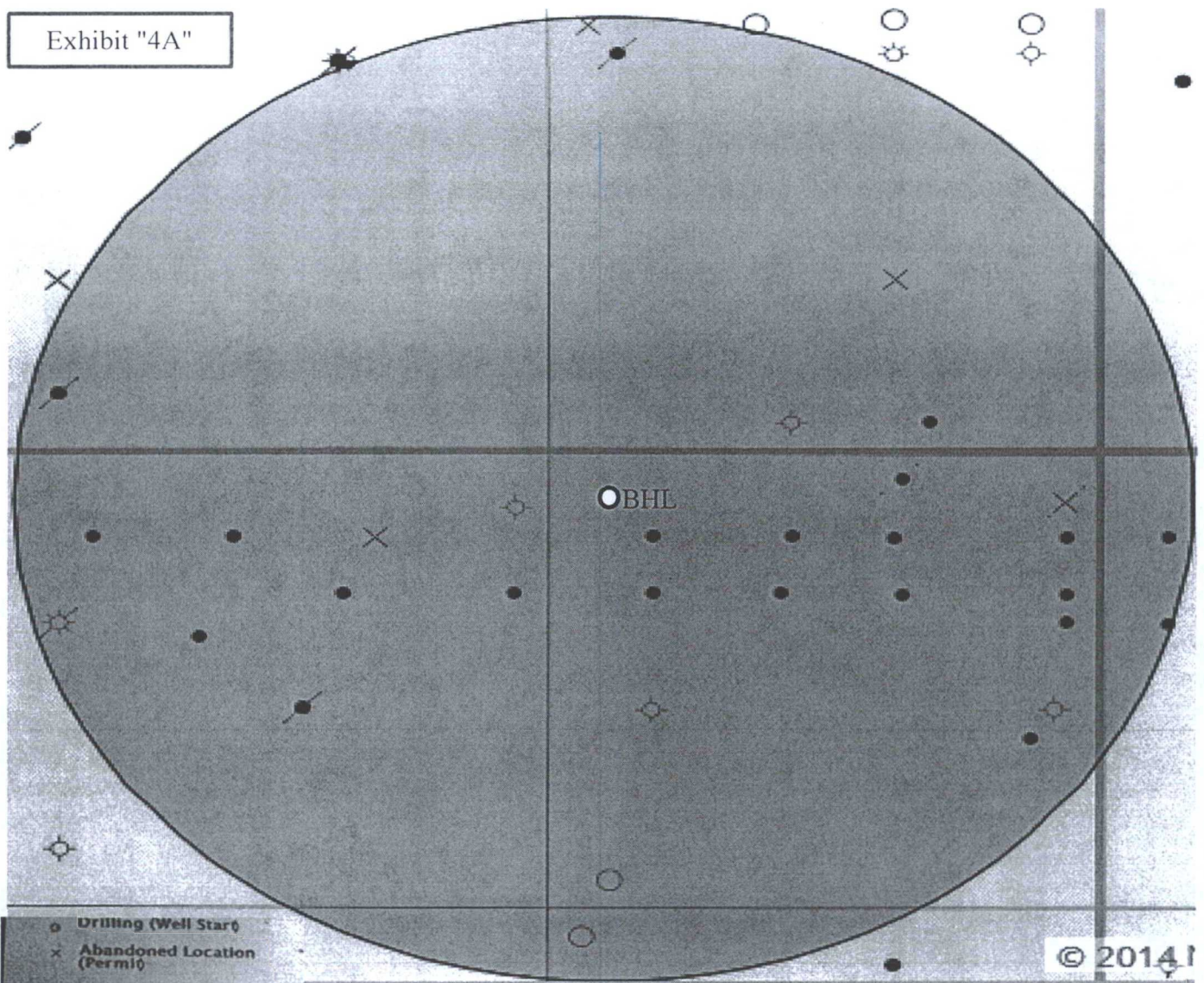
CR-126A

24





Exhibit "4A"



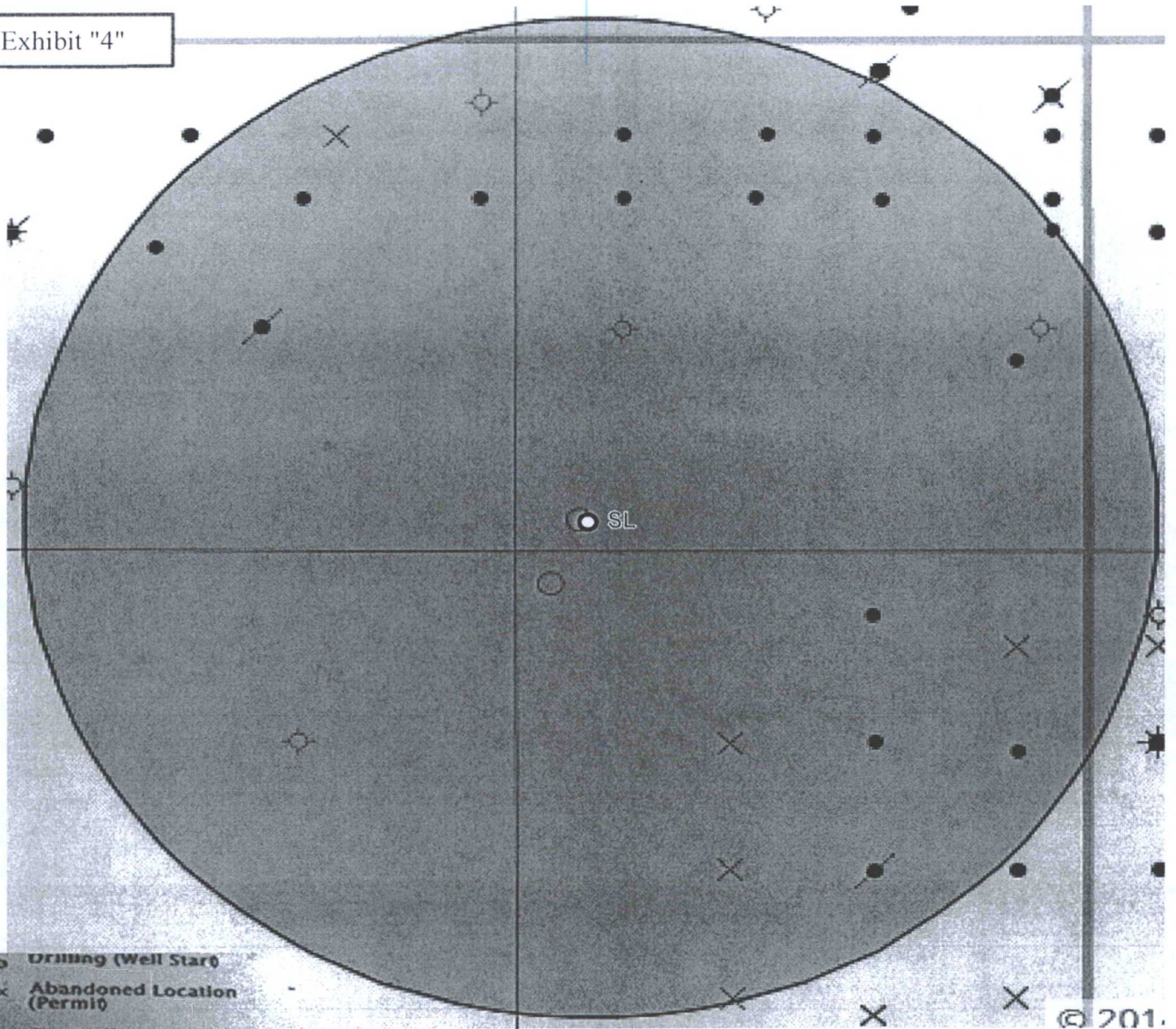
© 2014

- Drilling (Well Start)
- × Abandoned Location (Permit)
- ✱ Gas Well
- Oil Well
- ✱ Oil and Gas Well
- Other (Observation, etc)
- ✱ Injection Well
- ◇ Suspended
- ✱ Plugged Gas Well
- ✱ Plugged Oil Well
- ✱ Plugged Oil and Gas
- ◇ Dry Hole (No Shows)
- ✱ Dry Hole w/Gas Show
- ◇ Dry Hole w/Oil Show
- ✱ Dry Hole w/Oil and Gas Show

Bottom Hole Location  
 Crazy Wolf 1 B2MD Fed Com #1H  
 Sec 1 T19S R32E



Exhibit "4"



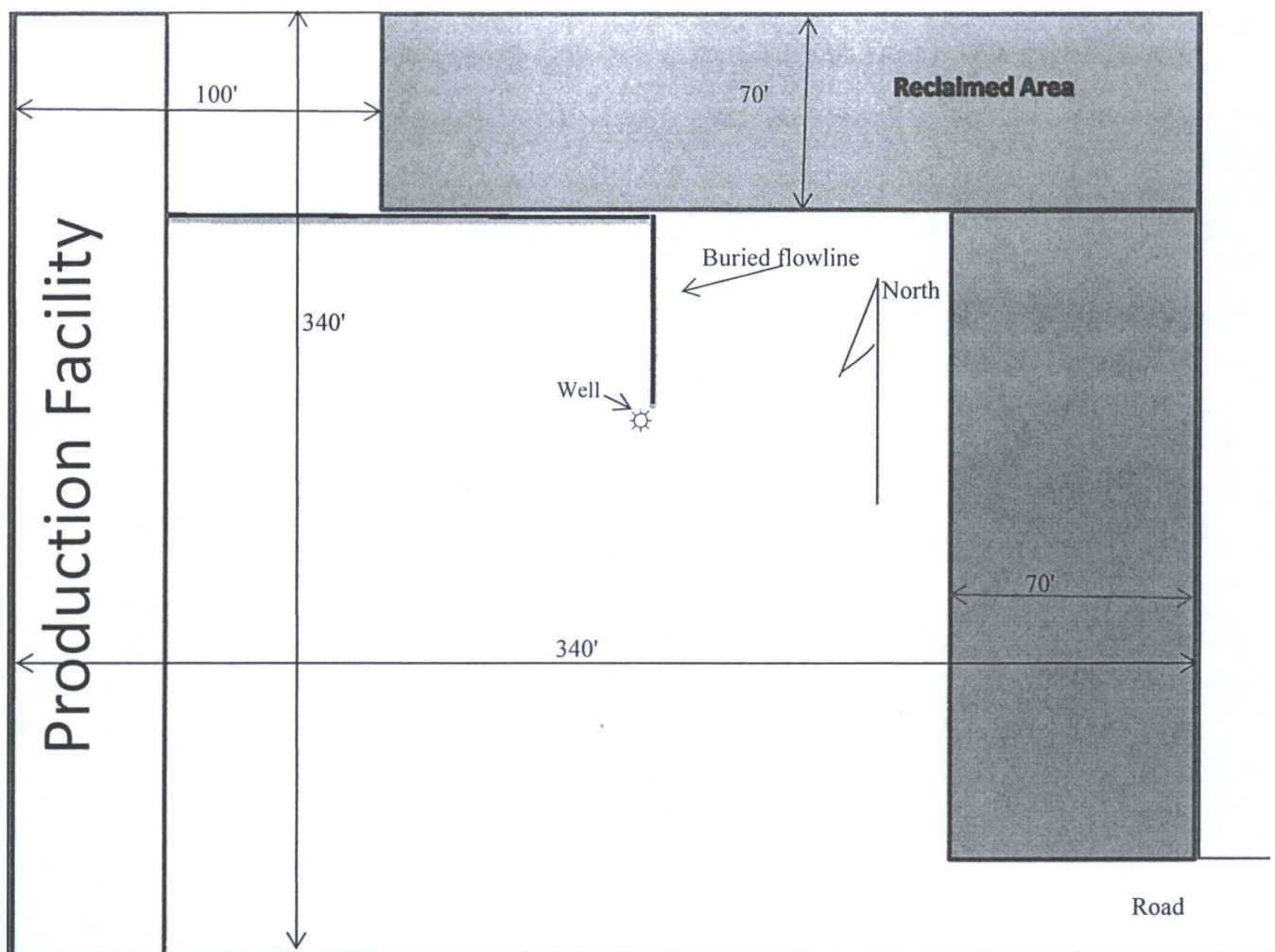
- Drilling (Well Start)
- × Abandoned Location (Permit)
- ✱ Gas Well
- Oil Well
- ✱ Oil and Gas Well
- Other (Observation, etc)
- ◇ Injection Well
- ◇ Suspended
- ✱ Plugged Gas Well
- ✱ Plugged Oil Well
- ✱ Plugged Oil and Gas
- ◇ Dry Hole (No Shows)
- ✱ Dry Hole w/Gas Show
- ✱ Dry Hole w/Oil Show
- ✱ Dry Hole w/Oil and Gas Show

Surface Location  
 Crazy Wolf 1 B2MD Fed Com #1H  
 Sec 1 T19S R32E



## Exhibit 5: Reclaim

Closed Loop Pad Dimensions 340' x 340'



Mewbourne Oil Company  
Crazy Wolf 1 B2MD Fed #1H  
185' FSL & 660' FWL  
Sec. 1 T19S R32E  
Lea County, NM