

District I
1625 N. French Dr., Hobbs, NM 88240
Phone: (575) 393-6161 Fax: (505) 393-0720
District II
811 S. First St., Artesia, NM 88210
Phone: (575) 748-1283 Fax: (575) 748-9720
District III
1000 Rio Brazos Road, Aztec, NM 87410
Phone: (505) 334-6178 Fax: (505) 334-6170
District IV
1220 S. St. Francis Dr., Santa Fe, NM 87505
Phone: (505) 476-3460 Fax: (505) 476-3462

State of New Mexico **HOBBS OCD**
Energy, Minerals & Natural Resources Department
OIL CONSERVATION DIVISION **MAR 21 2016**
1220 South St. Francis Dr.
Santa Fe, NM 87505 **RECEIVED**

Form C-102
Revised August 1, 2011
Submit one copy to appropriate
District Office

☐ AMENDED REPORT

WELL LOCATION AND ACREAGE DEDICATION PLAT

¹ API Number 30-029-43136		² Pool Code 83610		³ Pool Name RED HILLS WEST WOLFCAMP GAS					
⁴ Property Code 39542		⁵ Property Name RED HILLS WEST UNIT						⁶ Well Number 14	
⁷ GRID NO. 14744		⁸ Operator Name MEWBOURNE OIL COMPANY						⁹ Elevation 3204'	
¹⁰ Surface Location									
UL or lot no. M	Section 9	Township 26S	Range 32E	Lot Idn	Feet from the 200	North/South line SOUTH	Feet From the 690	East/West line WEST	County LEA
¹¹ Bottom Hole Location If Different From Surface									
UL or lot no. D	Section 9	Township 26S	Range 32E	Lot Idn	Feet from the 330	North/South line NORTH	Feet from the 330	East/West line WEST	County LEA
¹² Dedicated Acres 320		¹³ Joint or Infill		¹⁴ Consolidation Code		¹⁵ Order No. NSL			

No allowable will be assigned to this completion until all interest have been consolidated or a non-standard unit has been approved by the division.

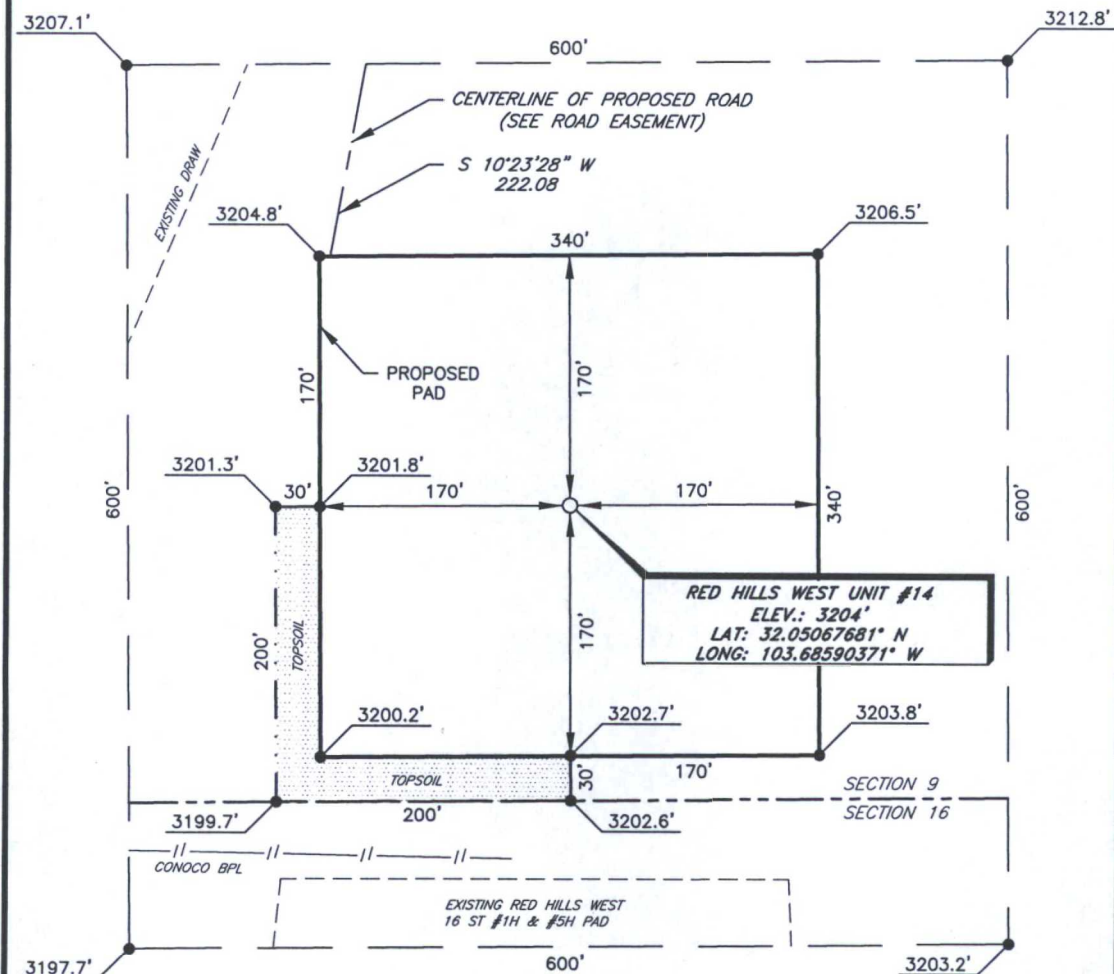
	<p>16 PROJECT AREA</p> <p>GEODETIC DATA NAD 27 GRID - NM EAST</p> <p>SURFACE LOCATION N 382762.9 - E 700591.2</p> <p>LAT: 32.05067681° N LONG: 103.68590371° W</p> <p>BOTTOM LOCATION N 387573.2 - E 700189.9</p> <p>CORNER DATA NAD 27 GRID - NM EAST</p> <p>A: FOUND BRASS CAP "1939" N 382557.2 - E 699903.2</p> <p>B: FOUND BRASS CAP "1939" N 385229.9 - E 699879.4</p> <p>C: CALCULATED CORNER N 387900.3 - E 699857.1</p> <p>D: FOUND BRASS CAP "1939" N 387946.8 - E 705188.7</p> <p>E: FOUND BRASS CAP "1939" N 385273.8 - E 705219.0</p> <p>F: FOUND BRASS CAP "1939" N 382599.3 - E 705250.3</p> <p>G: FOUND BRASS CAP "1939" N 382578.6 - E 702578.3</p>	<p>17 OPERATOR CERTIFICATION</p> <p>I hereby certify that the information contained herein is true and complete to the best of my knowledge and belief, and that this organization either owns a working interest or unleased mineral interest in the land including the proposed bottom hole location or has a right to drill this well at this location pursuant to a contract with an owner of such a mineral or working interest, or to a voluntary pooling agreement or a compulsory pooling order heretofore entered by the division.</p> <p>Signature: <u>Bradley Bishop</u> Date: <u>1-29-15</u></p> <p>Printed Name: <u>BRADLEY BISHOP</u></p> <p>E-mail Address: _____</p>
	<p>18 SURVEYOR CERTIFICATION</p> <p>I hereby certify that the well location shown on this plat was plotted from field notes of actual surveys made by me or under my supervision, and that the same is true and correct to the best of my belief.</p> <p>10-23-2014 Date of Survey</p> <p>Signature and Seal of Professional Surveyor: <u>Robert M. Howett</u></p> <p>19680 Certificate Number</p>	

RRC - Firm No.: TX 10193838 NM 4655451 - Job No.: LS140430

MAR 22 2016

Exhibit "3"

MEWBOURNE OIL COMPANY RED HILLS WEST UNIT #14 (200' FSL & 690' FWL) SECTION 9, T26S, R32E N. M. P. M., LEA CO., NEW MEXICO



DIRECTIONS TO LOCATION

From the intersection of CR-J1 (Orla) and CR-J2 (Battle Axe),
Go Northeast on CR-J1 approx. 2.1 miles to a lease road on the left;
Turn left and go West approx. 0.2 miles to proposed road;
Turn left and go South approx. 222 feet to proposed pad;
Well is on the left.

SCALE: 1" = 100'
0 50 100
BEARINGS ARE
NAD 27 GRID - NM EAST
DISTANCES ARE
GROUND.

Firm No.: TX 10193838 NM 4655451

Copyright 2014 - All Rights Reserved

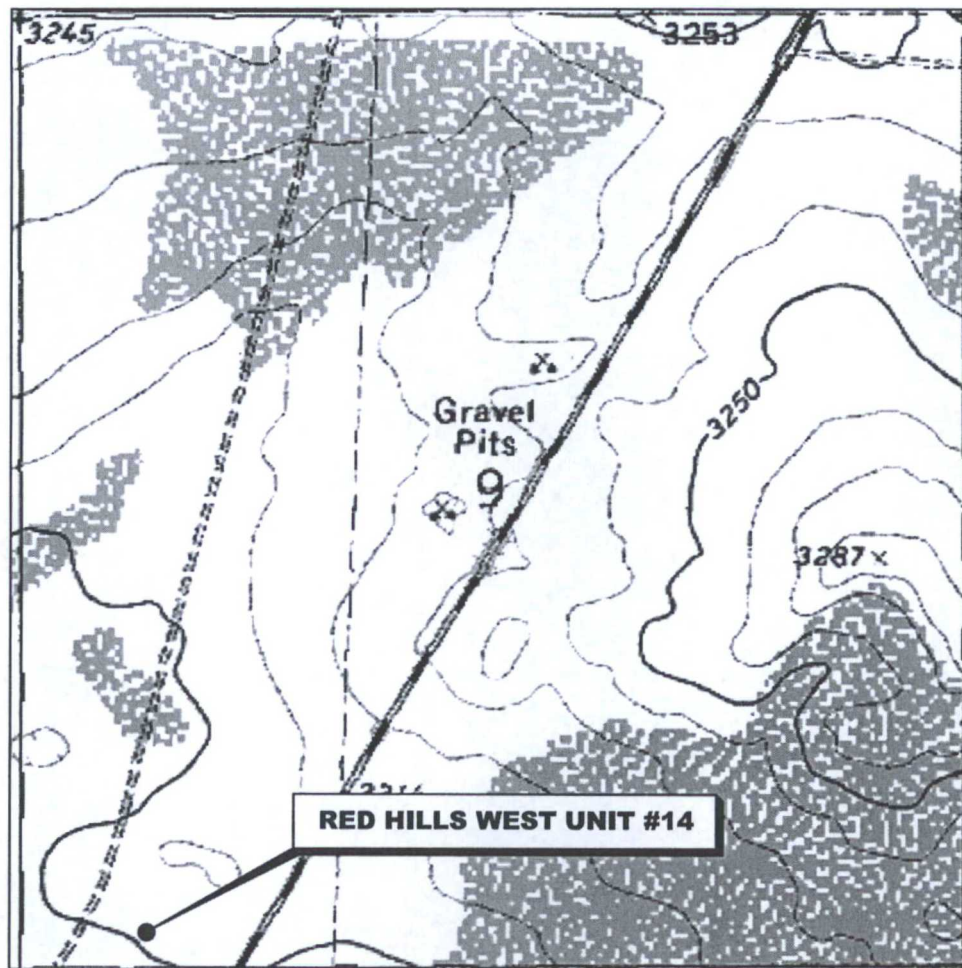
NO.	REVISION	DATE
JOB NO.:	LS140430	
DWG. NO.:	140430PAD	

RRC

306 W. BROADWAY ST., HOBBS, NM 88240 (575) 964-8200

SCALE: 1" = 100'
DATE: 10-23-2014
SURVEYED BY: BK/KR
DRAWN BY: ARJ
APPROVED BY: RMH
SHEET : 1 OF 1

LOCATION VERIFICATION MAP



SECTION 9, TWP. 26 SOUTH, RGE. 32 EAST,
N. M. P. M., LEA CO., NEW MEXICO

OPERATOR: Mewbourne Oil Company
LEASE: Red Hills West Unit
WELL NO.: 14
ELEVATION: 3204'

LOCATION: 200' FSL & 690' FWL
CONTOUR INTERVAL: 10'
USGS TOPO. SOURCE MAP:
Paduca Breaks West, NM (1973)

Firm No.: TX 10193838 NM 4655451

Copyright 2014 - All Rights Reserved

NO.	REVISION	DATE
JOB NO.: LS140430		
DWG. NO.: 140430LVM		

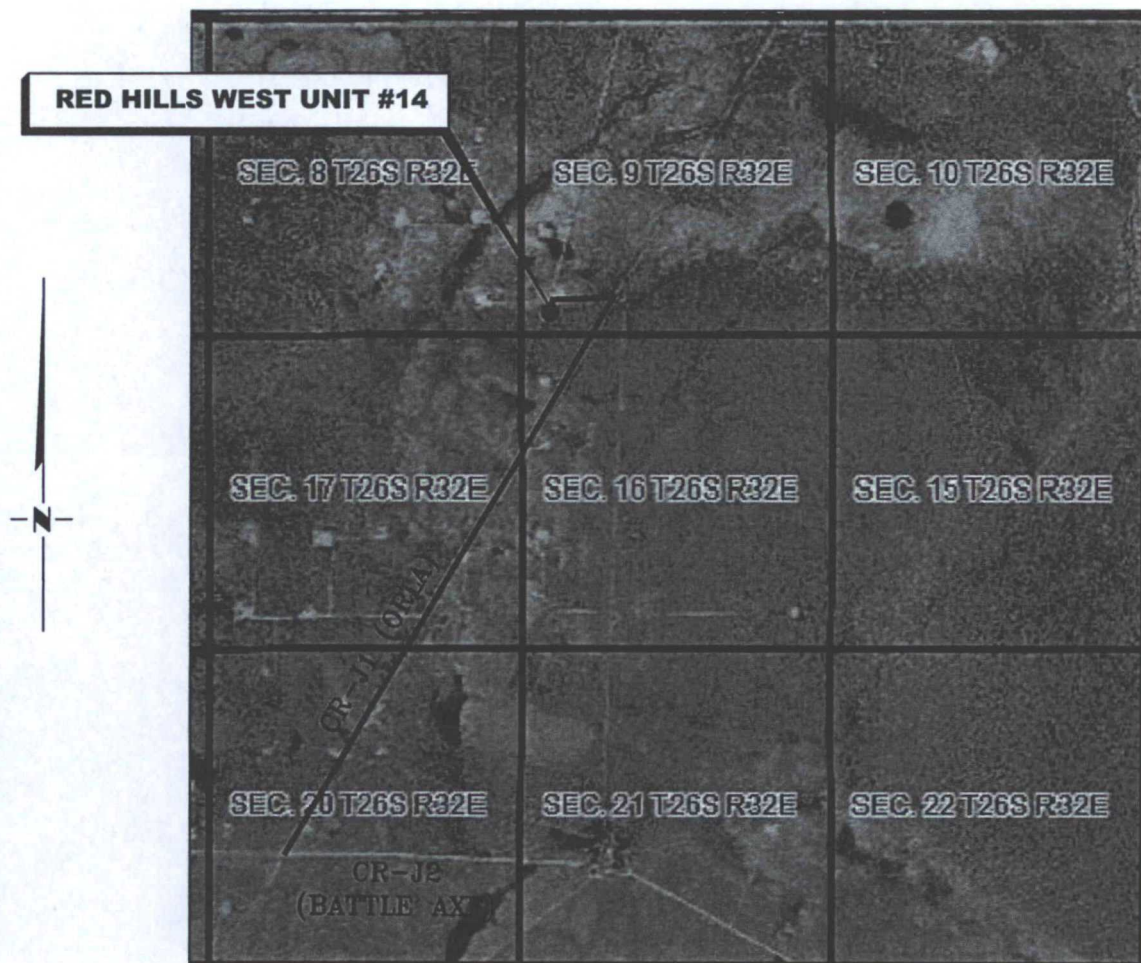
RRC

308 W. BROADWAY ST., HOBBS, NM 88240 (575) 964-8200

SCALE: 1"=1000'
DATE: 10-23-2014
SURVEYED BY: BK/KR
DRAWN BY: ARJ
APPROVED BY: RMH
SHEET : 1 OF 1

VICINITY MAP

NOT TO SCALE



*SECTION 9, TWP. 26 SOUTH, RGE. 32 EAST,
N. M. P. M., LEA CO., NEW MEXICO*

OPERATOR: Mewbourne Oil Company
LEASE: Red Hills West Unit
WELL NO.: 14

LOCATION: 200' FSL & 690' FWL
ELEVATION: 3204'

Firm No.: TX 10193838 NM 4655451

Copyright 2014 - All Rights Reserved

NO.	REVISION	DATE
JOB NO.:	LS140430	
DWG. NO.:	140430VM	

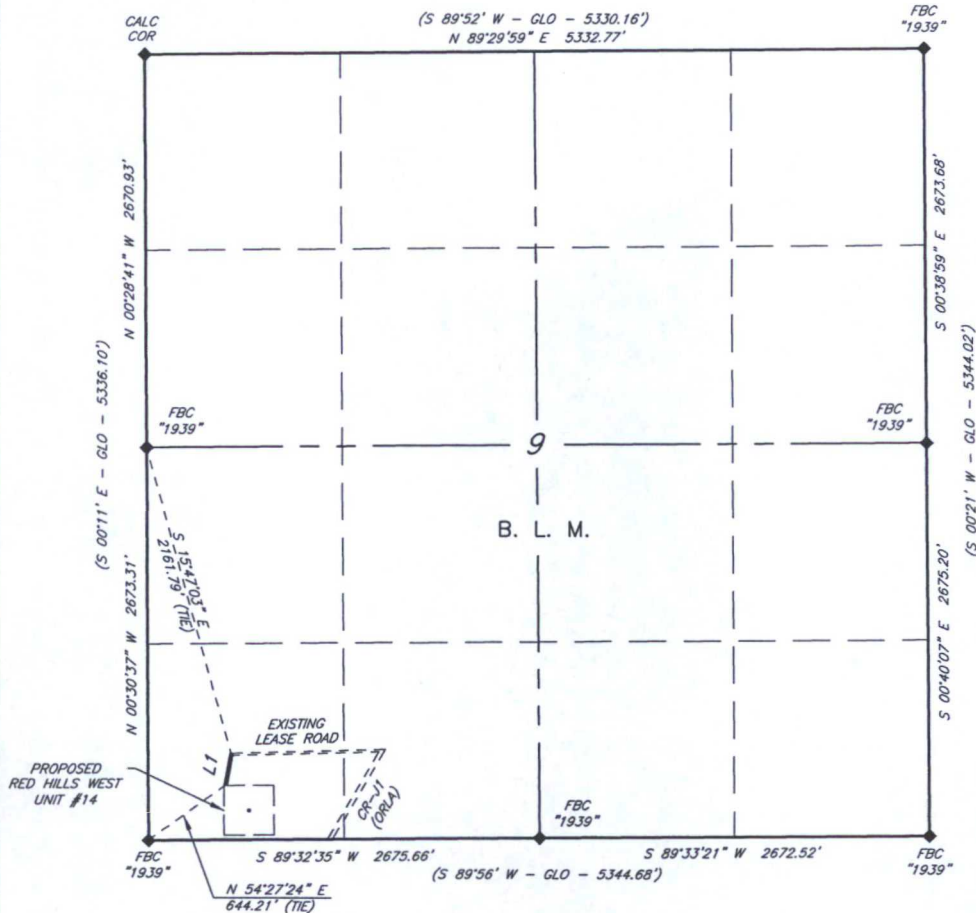
RRC

308 W. BROADWAY ST., HOBBS, NM 88240 (575) 964-8200

SCALE: NTS
DATE: 10-23-2014
SURVEYED BY: BK/KR
DRAWN BY: ARJ
APPROVED BY: RMH
SHEET : 1 OF 1

Exhibit "3C"

MEWBOURNE OIL COMPANY PROPOSED ROAD EASEMENT FROM AN EXISTING LEASE ROAD TO THE RED HILLS WEST UNIT #14 SECTION 9, T26S, R32E N. M. P. M., LEA CO., NEW MEXICO



SCALE: 1" = 1000'

BEARINGS ARE GRID NAD 27
NM EAST
DISTANCES ARE HORIZ. GROUND.

LEGEND

- () RECORD DATA - GLO
- ◆ FOUND MONUMENT AS NOTED
- PROPOSED ROAD
- OVERHEAD UTILITIES
- EXISTING BPL

I, R. M. Howett, a N. M. Professional Surveyor, hereby certify that I prepared this plat from an actual survey made on the ground under my direct supervision, said survey and plat meet the Min. Stds. for Land Surveying in the State of N. M. and are true and correct to the best of my knowledge and belief.

Robert M. Howett



Firm No.: TX 10193838 NM 4655451

Robert M. Howett NM PS 19680

Copyright 2014 - All Rights Reserved

NO.	REVISION	DATE
JOB NO.:	LS140430	
DWG. NO.:	140430RD	

RRC

308 W. BROADWAY ST., HOBBS, NM 88240 (575) 964-8200

SCALE: 1" = 1000'
DATE: 10-23-2014
SURVEYED BY: BK/KR
DRAWN BY: ARJ
APPROVED BY: RMH
SHEET : 1 OF 2

Exhibit "3C cont."

MEWBOURNE OIL COMPANY
PROPOSED ROAD EASEMENT FROM
AN EXISTING LEASE ROAD
TO THE RED HILLS WEST UNIT #14
SECTION 9, T26S, R32E
N. M. P. M., LEA CO., NEW MEXICO

DESCRIPTION

A strip of land 30 feet wide, being 222.08 feet or 13.459 rods in length lying in Section 9, Township 26 South, Range 32 East, N. M. P. M., Lea County, New Mexico, being 15 feet left and 15 feet right of the following described survey of a centerline across B.L.M. Land;

BEGINNING at Engr. Sta. 0+00, a point which bears S 15°47'03" E, 2161.79 feet from a brass cap, stamped "1939", found for the West quarter corner of Section 9;

Thence S 10°23'28" W, 222.08 feet to Engr. Sta. 2+22.08, the End of Survey, a point which bears N 54°27'24" E, 644.21 feet from a brass cap, stamped "1939", found for the Southwest corner of Section 9.

Said strip of land contains 0.153 acres, more or less, and is allocated by forties as follows:

SW 1/4 SW 1/4 0.153 Ac.

Firm No.: TX 10193838 NM 4655451

Copyright 2014 - All Rights Reserved

NO.	REVISION	DATE
JOB NO.: LS140430		
DWG. NO.: 140430RD2		

RRC

308 W. BROADWAY ST., HOBBS, NM 88240 (575) 964-8200

SCALE: 1"=1000'
DATE: 10-23-2014
SURVEYED BY: BK/KR
DRAWN BY: ARJ
APPROVED BY: RMH
SHEET : 2 of 2

Torah Myster Water

Red Hills West Unit #004H

RWU 14

4

FLYING

NIM T26S B

Forch Master Meter

mm 3 1/2"

1

Red Hills West 21-DN

RHWW 2.1 #2H

Red Hills West 21 AZDM Fed Com #2H

RHW 21 #1H RHW 22 #1H
RHW 21 #1H RHW 22 #1H

RHW 22 #1H

J-2 (Battle Axe Rd.

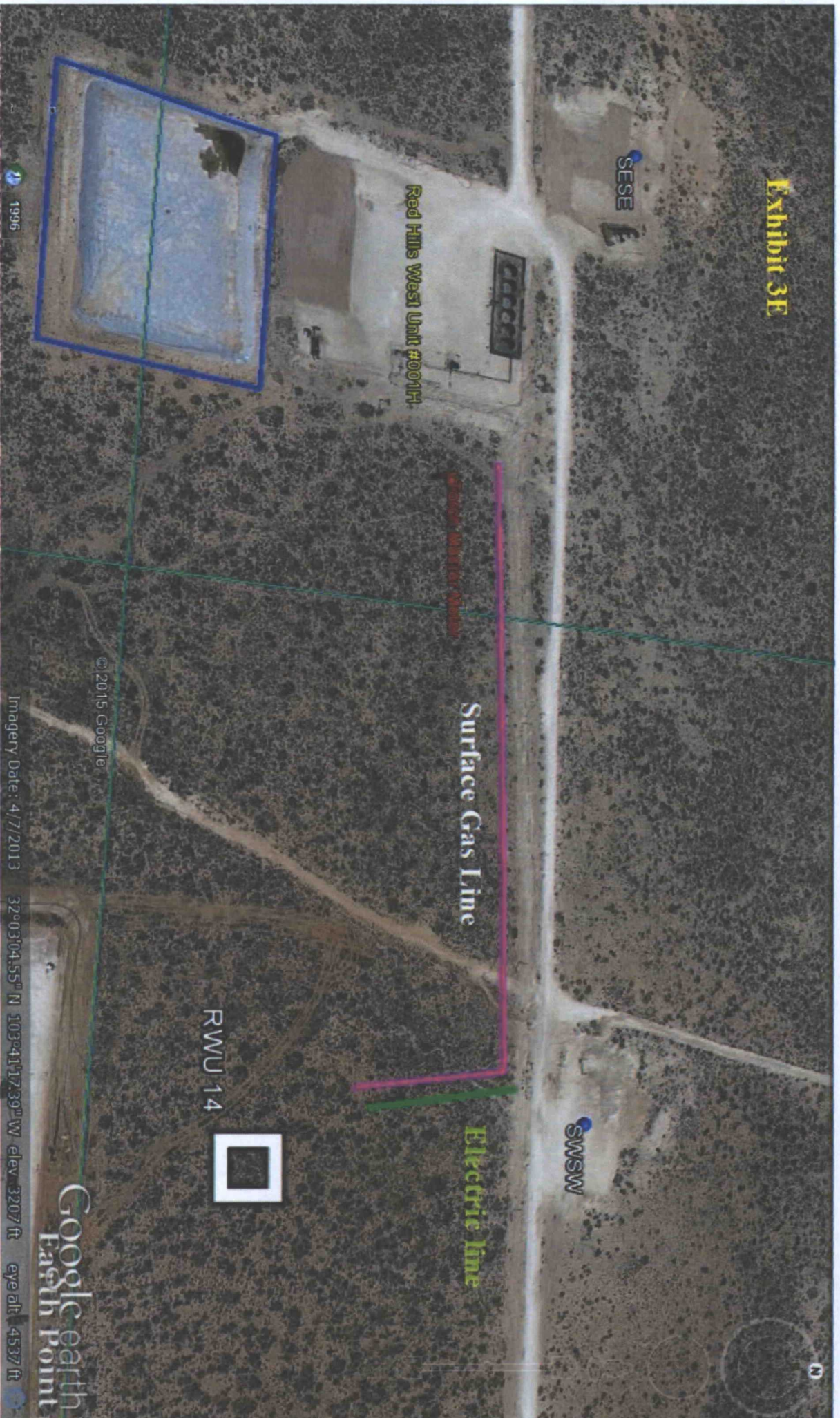
© 2015 Google

Imagery Date: 4/7/2013

32°02'09.42" N 103°41'29.71" W elev 3161 ft

1996

Exhibit 3E



SESE

Red Hills West Unit #001H

Surface Gas Line

Electric line

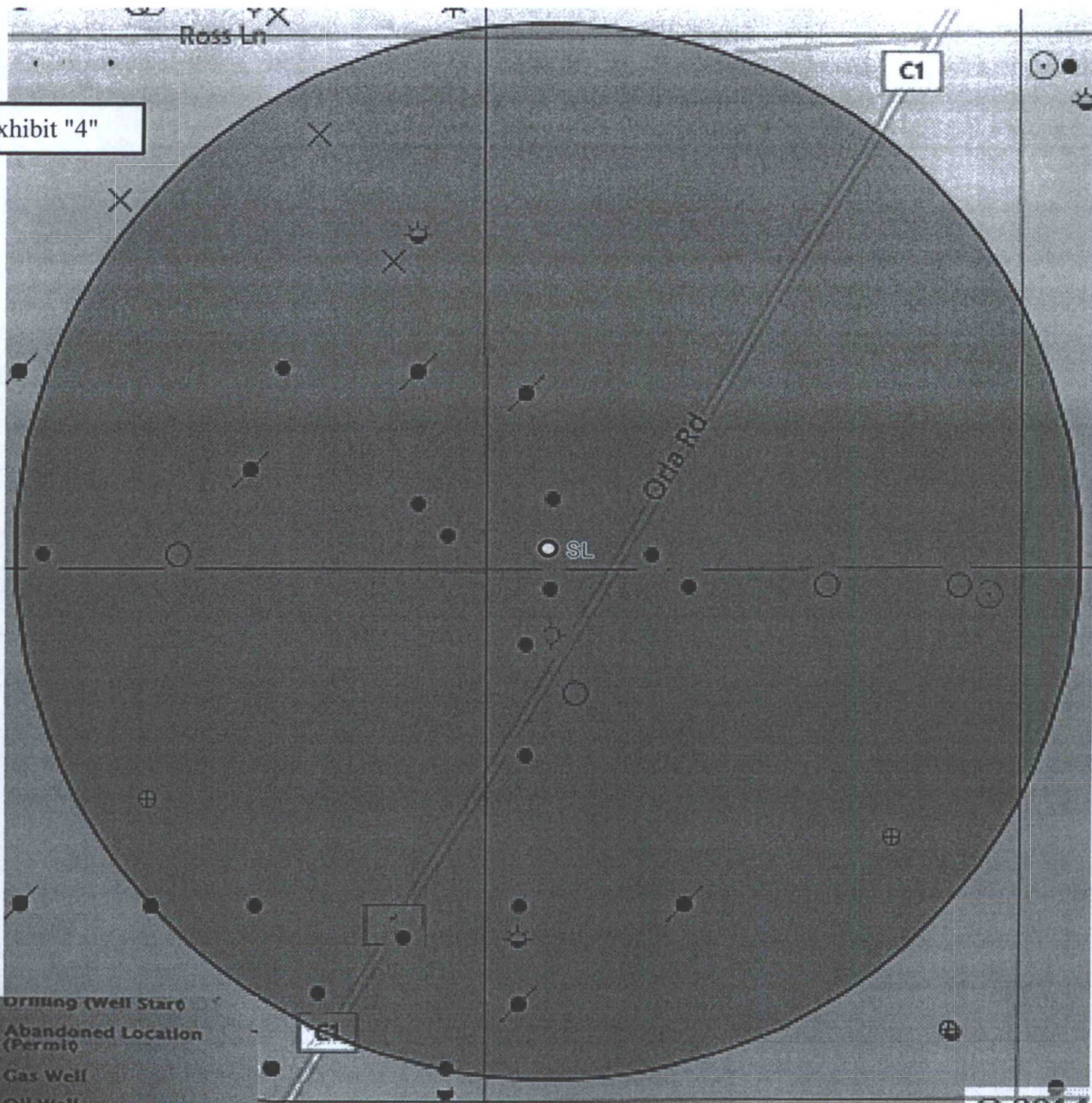
RWU 14



Imagery Date: 4/7/2013 32°03'04.55" N 103°41'17.39" W elev. 3207 ft eye alt. 4537 ft

Google earth
Earth Point

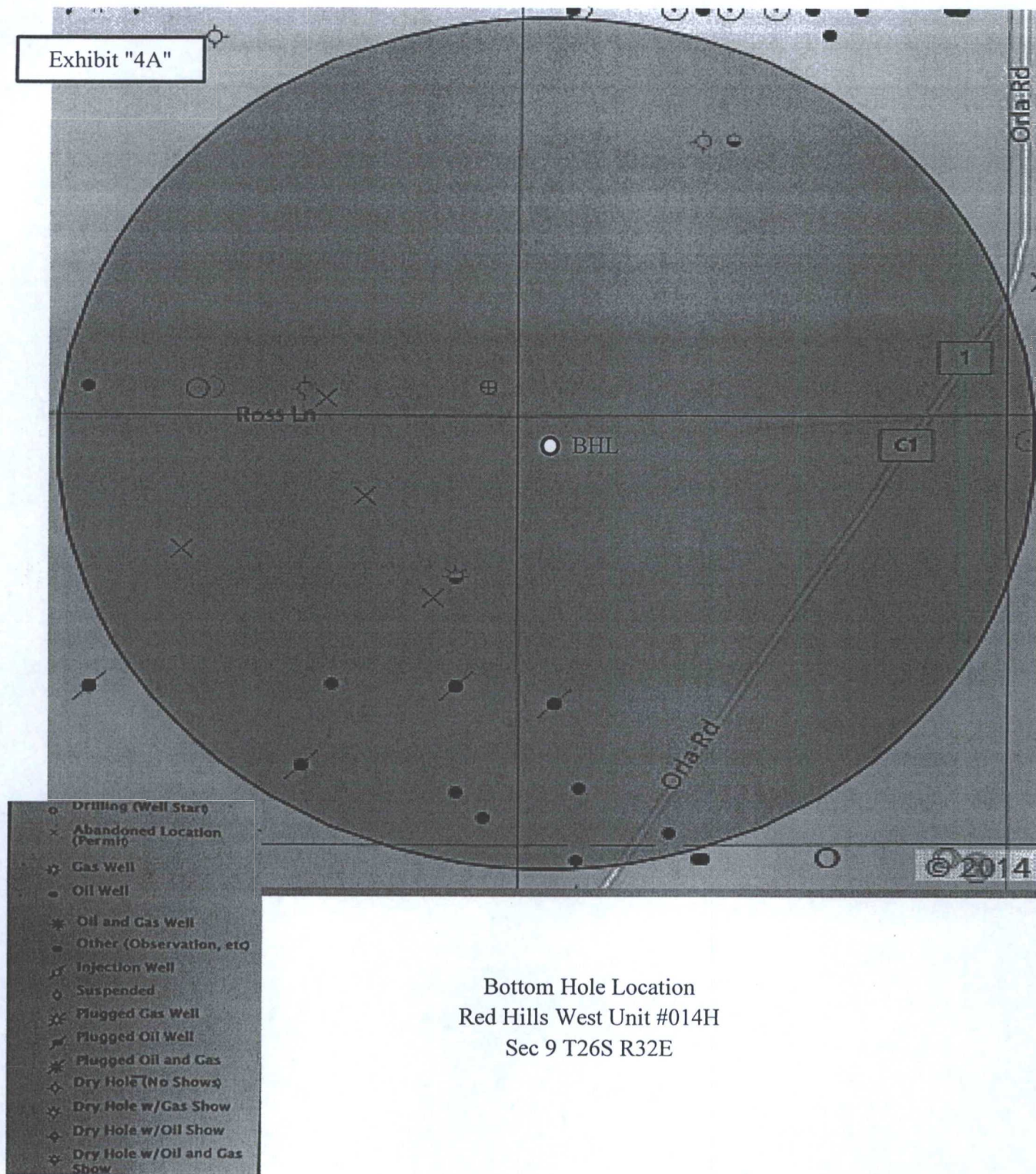
Exhibit "4"



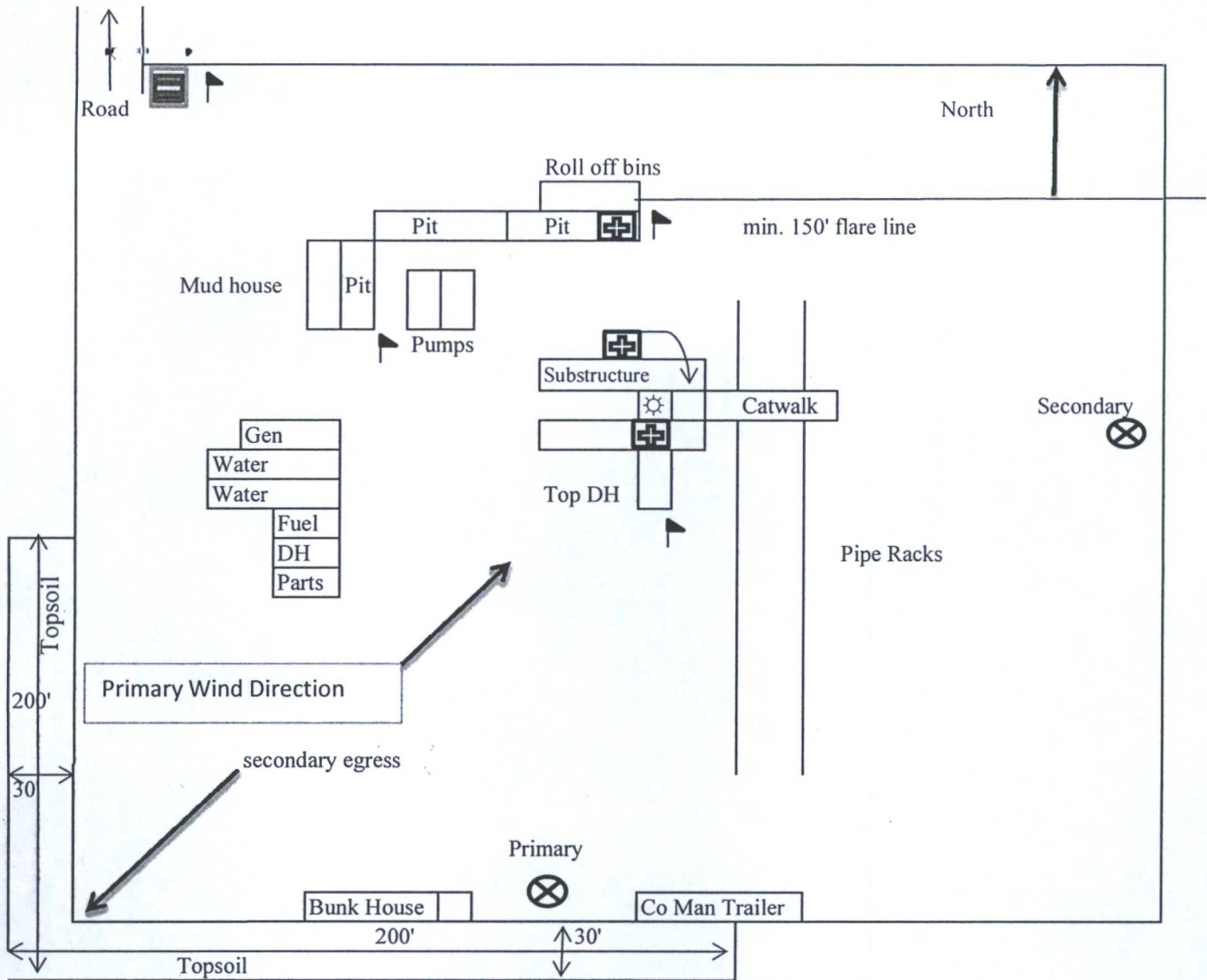
- Drilling (Well Start)
- × Abandoned Location (Permit)
- ☆ Gas Well
- Oil Well
- ✱ Oil and Gas Well
- Other (Observation, etc)
- ⚡ Injection Well
- ◇ Suspended
- ✱ Plugged Gas Well
- ✱ Plugged Oil Well
- ✱ Plugged Oil and Gas
- ◇ Dry Hole (No Shows)
- ◇ Dry Hole w/Gas Show
- ◇ Dry Hole w/Oil Show
- ✱ Dry Hole w/Oil and Gas Show

Surface Location
Red Hills West Unit #014H
Sec 9 T26S R32E

Exhibit "4A"



Bottom Hole Location
 Red Hills West Unit #014H
 Sec 9 T26S R32E



= Warning Signs



= Wind Markers



= H2S Monitors

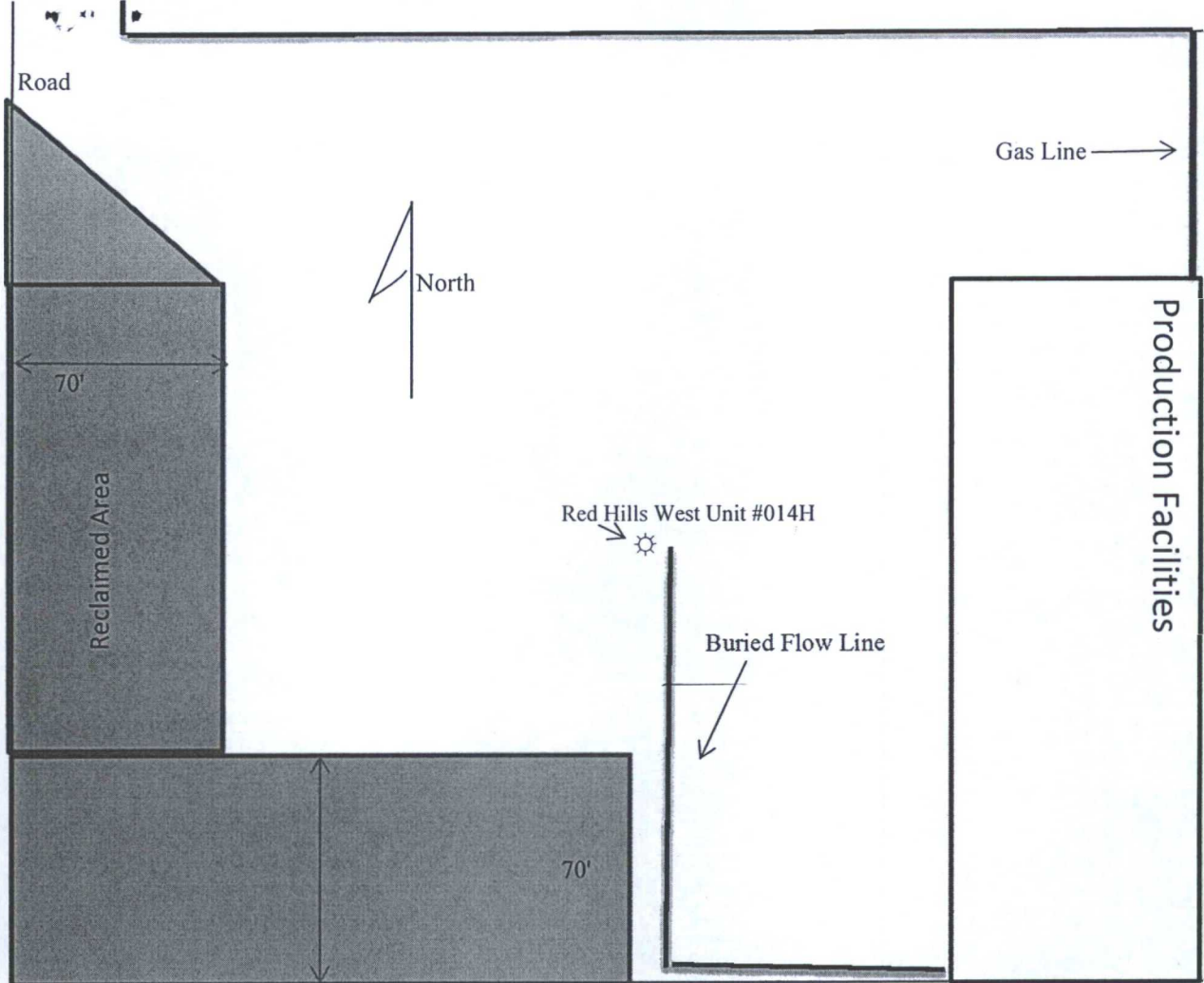


= Safety Stations

Mewbourne Oil Company
 Red Hills West Unit #014H
 200' FSL & 690' FWL
 Sec. 9 T26S R32E
 Lea County, NM

Closed Loop Pad Dimensions 340' x 340'

EXHIBIT 6



Mewbourne Oil Company
Red Hills West Unit #014H
200' FSL & 690' FWL
Sec. 9 T26S R32E
Lea Co. NM