

District I
1625 N. French Dr., Hobbs, NM 88240
Phone: (575) 393-6161 Fax: (575) 393-0720
District II
811 S. First St., Artesia, NM 88210
Phone: (575) 748-1283 Fax: (575) 748-9720
District III
1000 Rio Brazos Road, Aztec, NM 87410
Phone: (505) 334-6178 Fax: (505) 334-6170
District IV
1220 S. St. Francis Dr., Santa Fe, NM 87505
Phone: (505) 476-3460 Fax: (505) 476-3462

State of New Mexico
Energy, Minerals & Natural Resources Department
OIL CONSERVATION DIVISION
1220 South St. Francis Dr.
Santa Fe, NM 87505

HOBBS OCD

Form C-102

Revised August 1, 2011

Submit one copy to appropriate
District Office

RECEIVED

☒ AMENDED REPORT

WELL LOCATION AND ACREAGE DEDICATION PLAT

¹ API Number 30-025-43138	² Pool Code 51487	³ Pool Name Red Tank; Bone Spring, East
⁴ Property Code 313309	⁵ Property Name CHILI PARLOR 17 FEDERAL	⁶ Well Number 3H
⁷ OGRID No. 160825	⁸ Operator Name B.C. OPERATING, INC.	⁹ Elevation 3569

¹⁰ Surface Location

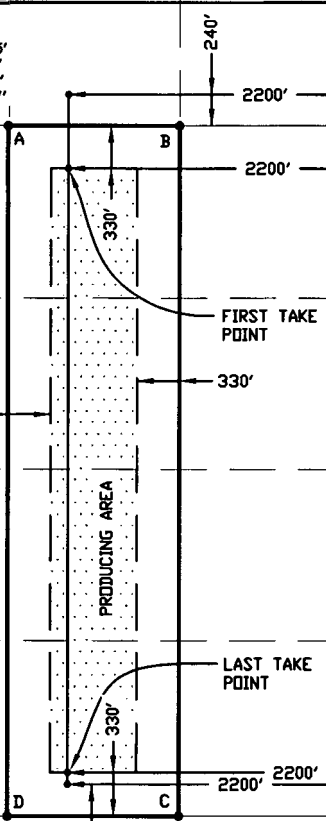
UL or lot no.	Section	Township	Range	Lot Idn	Feet from the	North/South line	Feet from the	East/West line	County
0	8	T22S	R33E		240'	SOUTH	2200'	EAST	LEA

¹¹ Bottom Hole Location If Different From Surface

UL or lot no.	Section	Township	Range	Lot Idn	Feet from the	North/South line	Feet from the	East/West line	County
0	17	T22S	R33E		240'	SOUTH	2200'	EAST	LEA

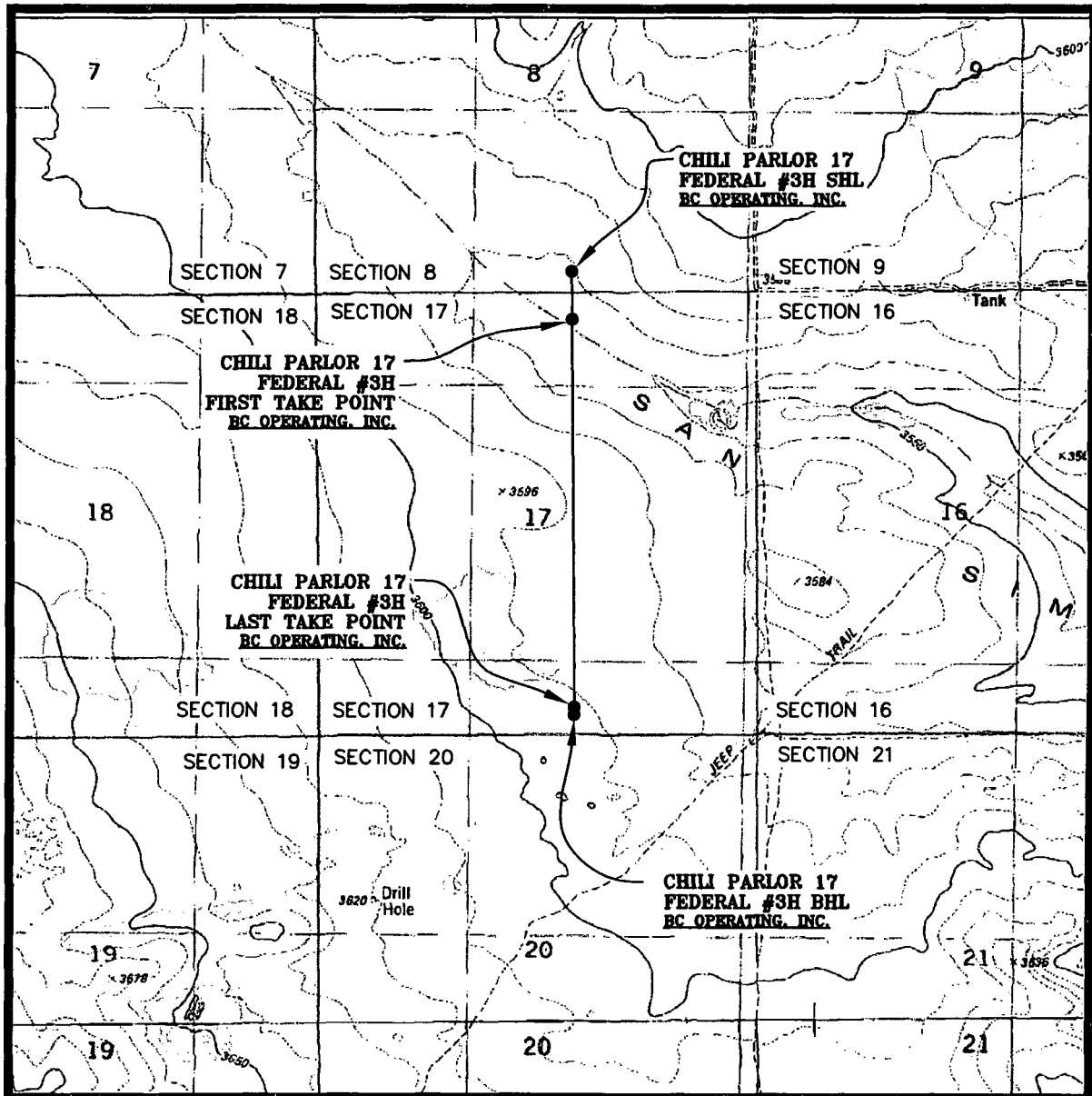
¹² Dedicated Acres 160.00	¹³ Joint or Infill	¹⁴ Consolidation Code	¹⁵ Order No.
---	-------------------------------	----------------------------------	-------------------------

No allowable will be assigned to this completion until all interests have been consolidated or a non-standard unit has been approved by the division.

¹⁶ SECTION 7 SECTION 18 SECTION 19	<p>CORNER COORDINATES NAD 83, SPCS NM EAST A - Y: 509709.94' / X: 769354.95' B - Y: 509711.53' / X: 770671.07' C - Y: 504430.20' / X: 770718.23' D - Y: 504424.88' / X: 769400.27'</p> <p>SURFACE HOLE LOCATION 240' FSL 2200' FEL NAD 83, SPCS NM EAST X: 769785.91' / Y: 509950.43' LAT: 32.39974813N / LON: 103.59315405W NAD 27, SPCS NM EAST X: 728603.42' / Y: 509889.81' LAT: 32.39962484N / LON: 103.5926676W</p> <p>FIRST TAKE POINT 330' FSL 2200' FEL NAD 83, SPCS NM EAST X: 769790.18' / Y: 509380.46' LAT: 32.39818144N / LON: 103.59315297W NAD 27, SPCS NM EAST X: 728607.68' / Y: 509319.85' LAT: 32.39805814N / LON: 103.59266774W</p> <p>LAST TAKE POINT 330' FSL 2200' FEL NAD 83, SPCS NM EAST X: 769833.12' / Y: 504756.63' LAT: 32.38547155N / LON: 103.59311755W NAD 27, SPCS NM EAST X: 728650.51' / Y: 504696.16' LAT: 32.38534822N / LON: 103.59263274W</p> <p>BOTTOM HOLE LOCATION 240' FSL 2200' FEL NAD 83, SPCS NM EAST X: 769833.96' / Y: 504666.64' LAT: 32.38522417N / LON: 103.59311689W NAD 27, SPCS NM EAST X: 728651.35' / Y: 504606.17' LAT: 32.38510084N / LON: 103.59263206W</p>		<p>¹⁷ OPERATOR CERTIFICATION I hereby certify that the information contained herein is true and complete to the best of my knowledge and belief, and that this organization either owns a working interest or unleased mineral interest in the land including the proposed bottom hole location or has a right to drill this well at this location pursuant to a contract with an owner of such a mineral or working interest, or to a voluntary pooling agreement or a compulsory pooling order heretofore entered by the division.</p> <p><i>Liam Stevens</i> 7/27/15 Signature Date</p> <p><i>Liam Stevens</i> Printed Name</p> <p><i>pstevens@bcoperating.com</i> E-mail Address</p> <p>¹⁸ SURVEYOR CERTIFICATION I hereby certify that the well location shown on this plat was plotted from field notes of actual surveys made by me or under my supervision, and that the same is true and correct to the best of my belief.</p> <p>MARCH 02, 2015 Date of Survey</p> <p><i>Lloyd P. Short</i> Signature and Seal of Professional Surveyor</p> <p><i>Lloyd P. Short</i> Certificate Number</p> <p>LLOYD P. SHORT NEW MEXICO 21653 PROFESSIONAL SURVEYOR</p>
--	---	--	--

MAR 28 2016

LOCATION VERIFICATION MAP

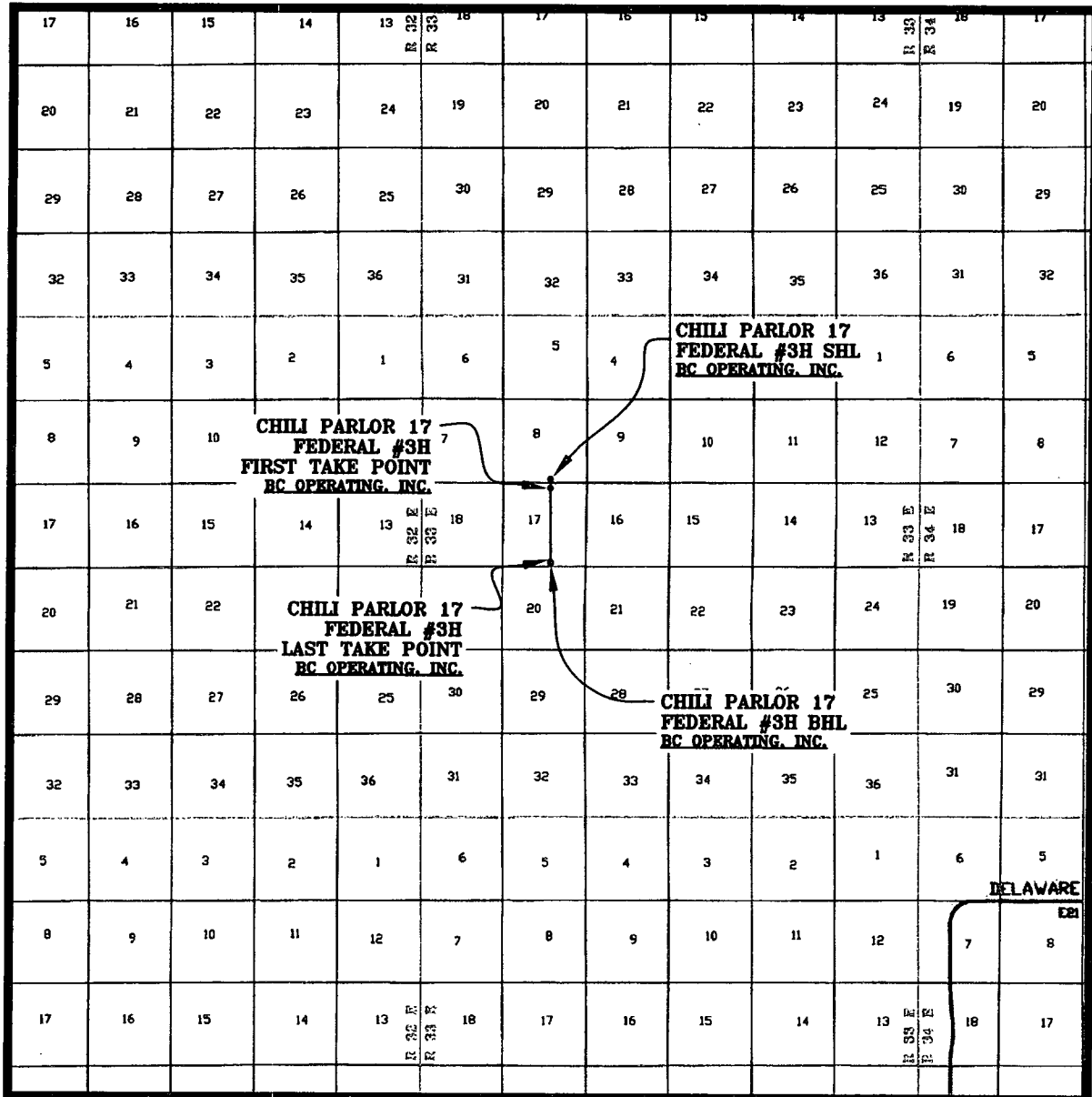


SEC. 8 TWP. 22-S RGE. 33-E
SURVEY: N.M.P.M.
COUNTY: LEA
DESCRIPTION: 240' FSL & 2200' FEL
ELEVATION: 3569'
OPERATOR: B.C. OPERATING, INC.
LEASE: CHILI PARLOR 17 FEDERAL
U.S.G.S. TOPOGRAPHIC MAP: GRAMA RIDGE, N.M.

SCALE: 1" = 2000'
CONTOUR INTERVAL = 10'

PREPARED BY:
R-SQUARED GLOBAL, LLC
1309 LOUISVILLE AVENUE, MONROE, LA 71201
318-323-6900 OFFICE
JOB No. R3402_001

VICINITY MAP



SEC. 8 TWP. 22-S RGE. 33-E

SCALE: 1" = 2 MILES

SURVEY: N.M.P.M.

COUNTY: LEA

DESCRIPTION: 240' FSL & 2200' FEL

ELEVATION: 3569'

OPERATOR: B.C. OPERATING, INC.

LEASE: CHILI PARLOR 17 FEDERAL

U.S.G.S. TOPOGRAPHIC MAP: GRAMA RIDGE, N.M.

PREPARED BY:
R-SQUARED GLOBAL, LLC
1309 LOUISVILLE AVENUE, MONROE, LA 71201
318-323-8900 OFFICE
JOB No. R3402_001

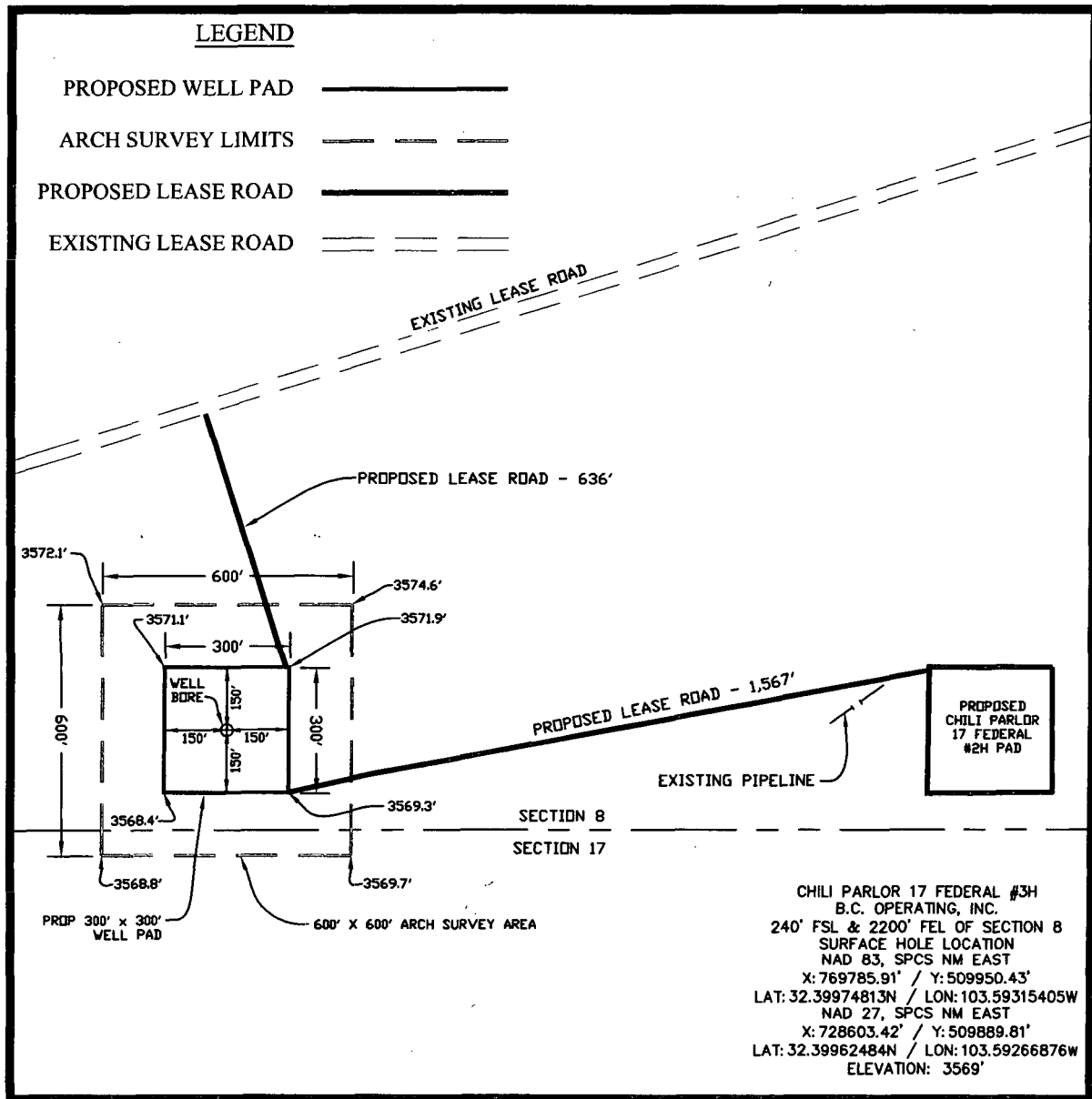
WELL PAD TOPO

SEC. 8 TWP. 22-S RGE. 33-E

SURVEY: N.M.P.M.

COUNTY: LEA

U.S.G.S. TOPOGRAPHIC MAP: GRAMA RIDGE, N.M.



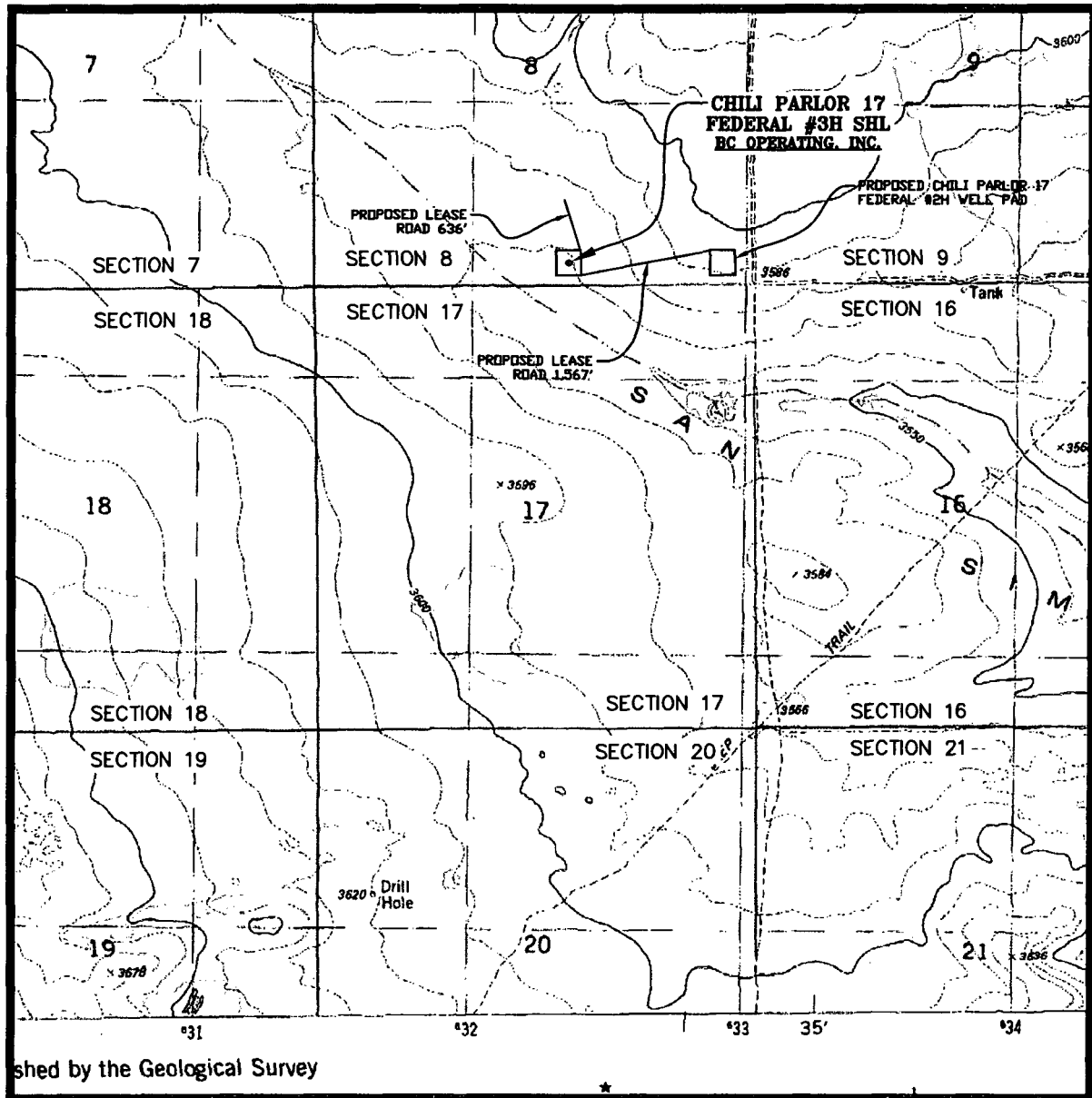
DIRECTIONS TO LOCATION:

FROM THE INTERSECTION OF WEST CARLSBAD HIGHWAY AND HIGHWAY 176 TRAVEL SOUTHEAST ON HIGHWAY 176 FOR 6.4 MILES TO LEASE ROAD ON THE RIGHT. TRAVEL SOUTH ON LEASE ROAD FOR 10.8 MILES TO LEASE ROAD ON THE LEFT. TRAVEL EAST ON LEASE ROAD FOR 0.6 MILES TO LEASE ROAD ON THE LEFT. TRAVEL NORTH ON LEASE ROAD FOR 1.2 MILES TO LEASE ROAD ON THE RIGHT. TRAVEL EAST ON EAST ROAD FOR 0.9 MILES TO PROPOSED WELL PAD 636 FEET ON THE RIGHT.

200' 0' 200' 400'
SCALE: 1" = 400'

PREPARED BY:
R-SQUARED GLOBAL, LLC
1309 LOUISVILLE AVENUE, MONROE, LA 71201
318-323-6900 OFFICE
JOB No. R3402_001

WELL PAD LOCATION VERIFICATION MAP



SEC. 8 TWP. 22-S RGE. 33-E
 SURVEY: N.M.P.M.
 COUNTY: LEA
 DESCRIPTION: 240' FSL & 2200' FEL
 ELEVATION: 3569'
 OPERATOR: B.C. OPERATING, INC.
 LEASE: CHILI PARLOR 17 FEDERAL
 U.S.G.S. TOPOGRAPHIC MAP: GRAMA RIDGE, N.M.

SCALE: 1" = 2000'
 CONTOUR INTERVAL = 10'

PREPARED BY:
 R-SQUARED GLOBAL, LLC
 1309 LOUISVILLE AVENUE, MONROE, LA 71201
 318-323-6900 OFFICE
 JOB No. R3402_001

EXISTING ACCESS ROAD VICINITY MAP

CHILI PARLOR 17 FEDERAL #3H

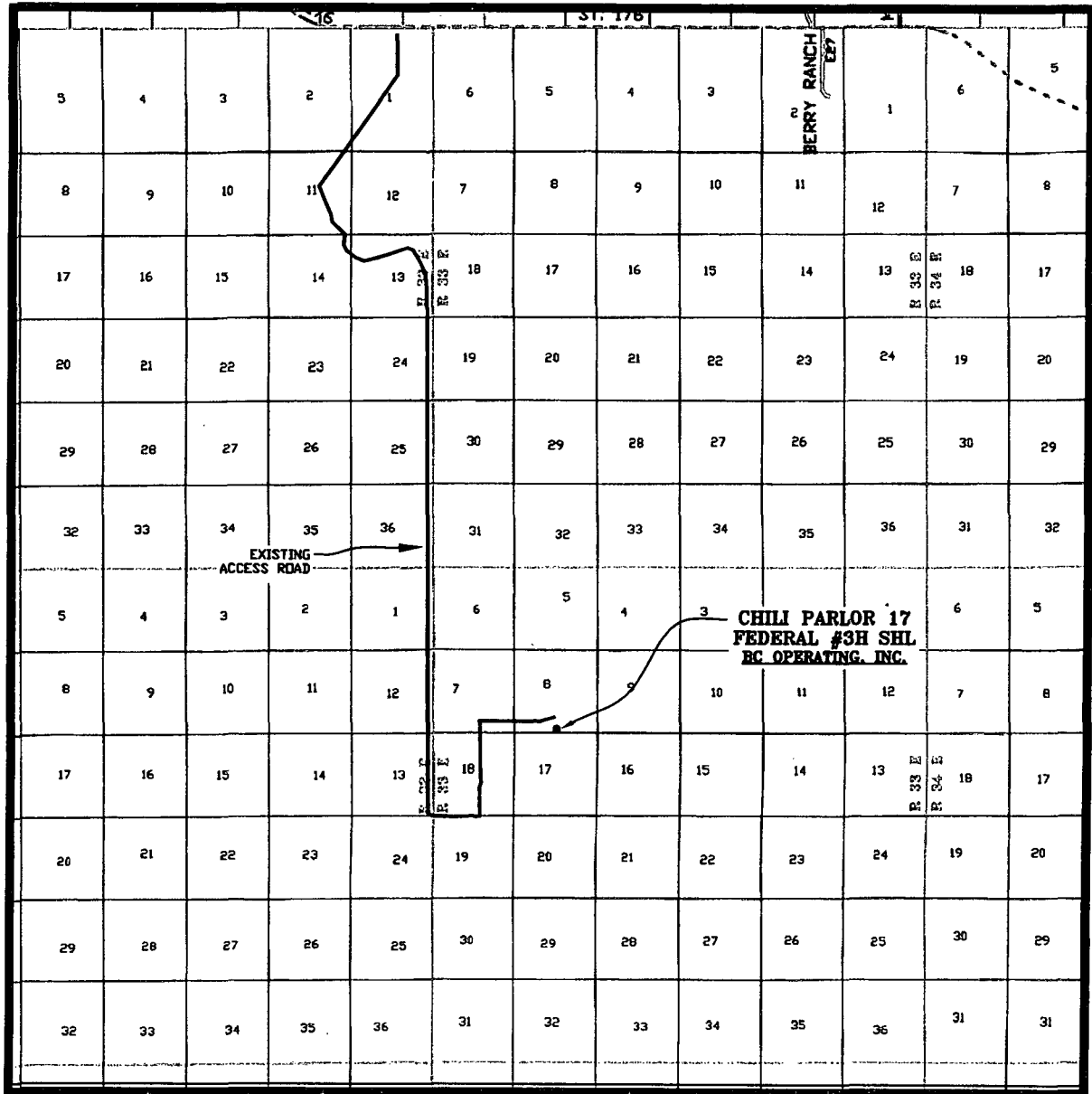
240' FSL & 2200' FEL

SEC. 8 TWP. 22-S RGE. 33-E

SURVEY: N.M.P.M.

COUNTY: LEA

U.S.G.S. TOPOGRAPHIC MAP: GRAMA RIDGE, N.M.



SCALE: 1" = 2 MILES

PREPARED BY:
R-SQUARED GLOBAL, LLC
1309 LOUISVILLE AVENUE, MONROE, LA 71201
318-323-6900 OFFICE
JOB No. R3402_001

