

Closed Loop System Design, Operating and Maintenance, and Closure Plan

HOBBS OCD

ConocoPhillips Company
Well: Britt B 53
Location: Sec. 15, T20S, R37E
Date: 10/30/2013

MAR 28 2016

RECEIVED

ConocoPhillips proposes the following plan for design, operating and maintenance, and closure of our proposed closed loop system for the above named well:

1. We propose to use a closed loop system with steel pits, haul-off bins, and frac tanks for containing all cuttings, solids, mud, water, brine, and liquids. We will not dig a pit, nor will we use a drying pad, nor will we build an earth pit above ground level, nor will we dispose of or bury any waste on location.

All drilling waste and all drilling fluids (fresh water, brine, mud, cuttings, drill solids, cement returns, and any other liquid or solid that may be involved) will be contained on location in the rig's steel pits or in haul-off bins or in frac tanks as needed. The intent is as follows:

- We propose to use the rigs' steel pits for containing and maintaining the drilling fluids.
- We propose to remove cuttings and drilled solids from the mud by using solids control equipment and to contain such cuttings and drilled solids on location in haul-off bins.
- We propose that any excess water that may need to be stored on location will be stored in tanks.

The closed loop system components will be inspected daily by each tour and any needed repairs will be made immediately. Any leak in the system will be repaired immediately, and any spilled liquids and/or solids will be cleaned immediately, and the area where any such spill occurred will be remediated immediately.

2. Cuttings and solids will be removed from location in haul-off bins by an authorized contractor and disposed of at an authorized facility. For this well, we propose the following disposal facility:

R-360 Inc.
4507 West Carlsbad Hwy, Hobbs, NM 88240,
P.O. Box 388; Hobbs, New Mexico 88241
Toll Free Phone: 877.505.4274, Local Phone Number: 432.638.4076

The physical address for the plant where the disposal facility is located is Highway 62/180 at mile marker 66 (33 miles East of Hobbs, NM and 32 miles West of Carlsbad, NM).

The Permit Number for R-360 is NM-01-0006.

A photograph showing the type of haul-off bins that will be used is attached.

3. Mud will be transported by vacuum truck and disposed of at R-360 Inc. at the facility described above.
4. Fresh Water and Brine will be hauled off by vacuum truck and disposed of at an authorized salt water disposal well. We propose the following for disposal of fresh water and brine as needed:
 - Nabors Well Services Company, 3221 NW County Rd; Hobbs, NM 88240, PO 5208 Hobbs, NM, 88241, Permit SWD 092. (Well Location: **Section 3, T19S R37E**)
 - Basic Energy Services, P.O. Box 1869; Eunice, NM 88231 Phone Number: 575.394.2545, Facility located at Hwy 18, Mile Marker 19; Eunice, NM.

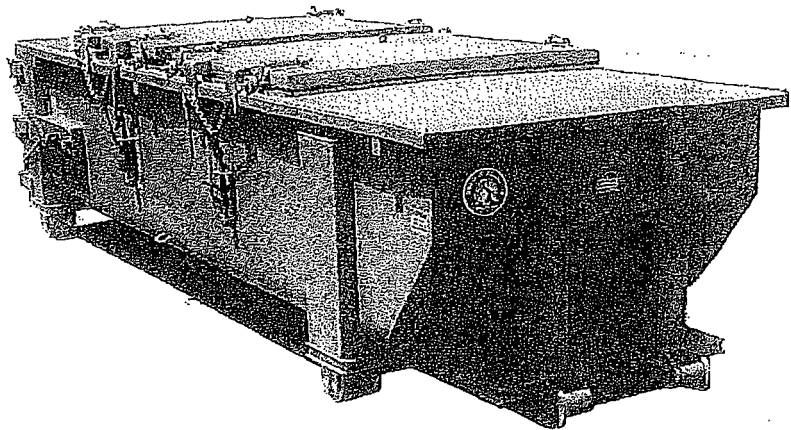
James Chen
Drilling Engineer
Office: 281-206-5244
Cell: 832.678.1647

APR 14 2016

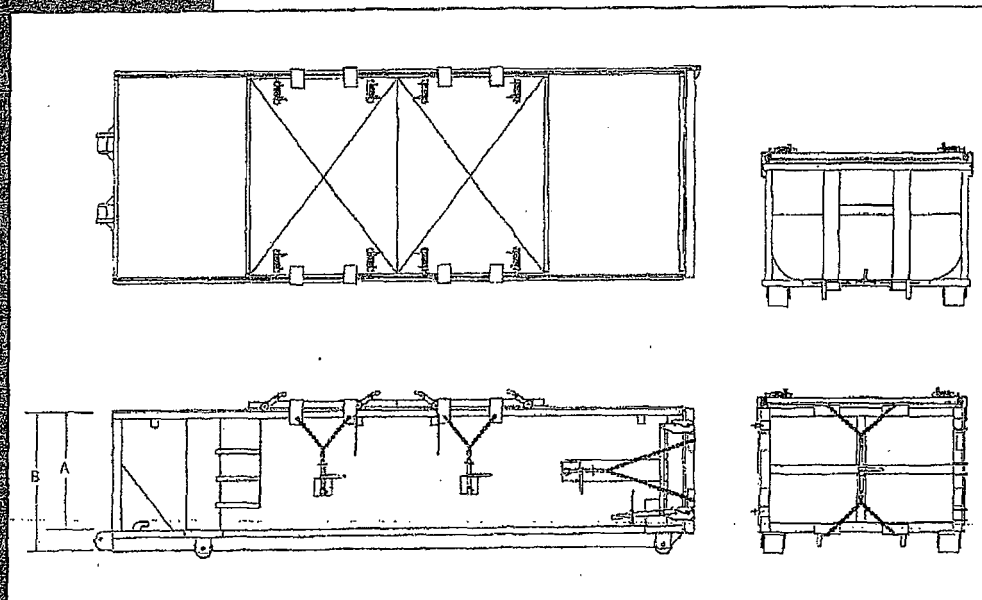
SPECIFICATIONS

Heavy Duty Split Metal Rolling Lid

FLOOR: 3/16" PL one piece
 CROSS MEMBER: 3 x 4-1/2 channel 16" on center
 WALLS: 3/16" PL solid welded with tubing top, inside liner hooks
 DOOR: 3/16" PL with tubing frame
 FRONT: 3/16" PL slant formed
 PICK UP: Standard cable with 2" x 6" x 1/4" rails, gusset at each crossmember
 WHEELS: 10 DIA x 9" long with rease fittings
 DOOR LATCH: 3 independent ratchet binders with chains, vertical second latch
 GASKETS: Extruded rubber seal with metal retainers
 WELDS: All welds continuous except sub-structure crossmembers
 FINISH: Coated inside and out with direct to metal, rust inhibiting acrylic enamel color coat
 HYDROTESTING: Full capacity static test
 DIMENSIONS: 22'-11" long (21'-8" inside), 99" wide (88" inside), see drawing for height
 OPTIONS: Steel grit blast and special paint, Ampliroll, Heil and Dino pickup
 ROOF: 3/16" PL roof panels with tubing and channel support frame
 LIDS: (2) 68" x 90" metal rolling lids spring loaded, self raising
 ROLLERS: 4" V-groove rollers with delrin bearings and grease fittings
 OPENING: (2) 60" x 82" openings with 8" divider centered on container
 LATCH: (2) independent ratchet binders with chains per lid
 GASKETS: Extruded rubber seal with metal retainers



CONT.	A	B
20 YD	41	53
25 YD	53	65
30 YD	65	77



Request for Variance

ConocoPhillips Company

Lease Number: NM LC 031621B

Well: BRIT B #53

Location: Sec. 15, T20S, R37E

Date: 10/16/2013

Request:

ConocoPhillips Company respectfully requests a variance to install a flexible choke line instead of a straight choke line prescribed in the Onshore Order No. 2, III.A.2.b Minimum standards and enforcement provisions for choke manifold equipment. This request is made under the provision of Onshore Order No. 2, IV Variances from Minimum Standard. The rig to be used to drill this well is equipped with a flexible choke line if the requested variance is approved and determined that the proposed alternative meets the objectives of the applicable minimum standards.

Justifications:

The applicability of the flexible choke line will reduce the number of target tees required to make up from the choke valve to the choke manifold. This configuration will facilitate ease of rig up and BOPE Testing.

Attachments:

- Attachment # 1 Specification from Manufacturer
- Attachment # 2 Mill & Test Certification from Manufacturer

Contact Information:

Program prepared by:

James Chen

Drilling Engineer, ConocoPhillips Company

Phone (832) 486-2184

Cell (832) 768-1647

Date: 26 September 2012



Industrial Products USA, Ltd.

2030 E. 8th Street, Suite B • Greeley, CO 80631

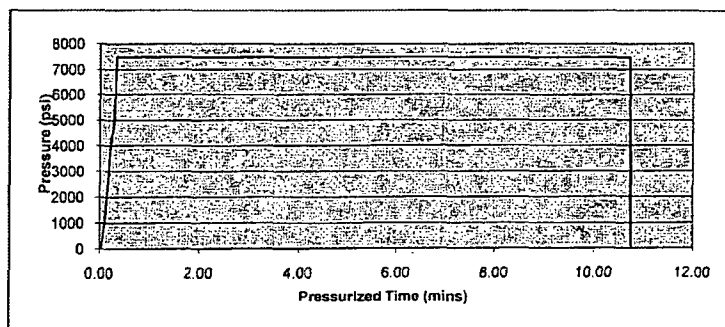
Ph: (970) 346-3751 • Fax: (970) 353-3168 • Toll Free: (866) 771-9739

TEST CERTIFICATE

Customer: PRECISION DRILLING
P.O. #: RIG 822
Invoice #: 27792
Material: 3 1/2" FIREGUARD
Description: 3 1/2" X 10'
Coupling 1: 3 1/2" FLANGE R31
" Serial:
" Quality:
Coupling 2: 3 1/2" FLOATING R31
" Serial:
" Quality:
Working Pressure : 3000
Test Pressure: 7500
Duration (mins): 10

Cert No.: 27792

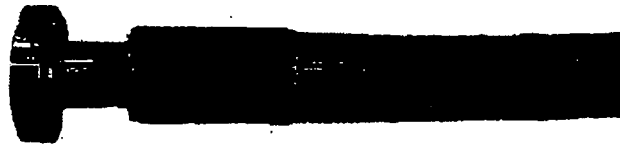
Date: 9/21/2012



Conducted By: FLORES M.

Test Technician

☒ Acceptable
☐ Not Acceptable



Reliance Eliminator Choke & Kill

This hose can be used as a choke hose which connects the BOP stack to the bleed-off manifold or a kill hose which connects the mud stand pipe to the BOP kill valve.

The Reliance Eliminator Choke & Kill hose contains a specially bonded compounded cover that replaces rubber covered Asbestos, Fibreglass and other fire retardant materials which are prone to damage. This high cut and gouge resistant cover overcomes costly repairs and downtime associated with older designs.

The Reliance Eliminator Choke & Kill hose has been verified by an independent engineer to meet and exceed EUB Directive 36 (700°C for 5 minutes).

Nom. ID		Nom OD		Weight		Min Bend Radius		Max WP	
in.	mm.	in.	mm	lb/ft	kg/m	in.	mm.	psi	Mpa
3	76.2	5.11	129.79	14.5	21.46	48	1219.2	5000	34.47
3-1/2	88.9	5.79	147.06	20.14	29.80	54	1371.6	5000	34.47

Fittings

RC4X5055
RC3X5055
RC4X5575

Flanges

R35 - 3-1/8 5000# API Type 6B
R31 - 3-1/8 3000# API Type 6B

Hammer Unions

All Union Configurations

Other

LP Threaded Connection
Graylock
Custom Ends

Operator Certification

CONOCOPHILLIPS COMPANY

CERTIFICATION:

I hereby certify that I, or persons under my direct supervision, have inspected the proposed drill site and access route proposed herein; that I am familiar with the conditions which currently exist; that I have full knowledge of State and Federal laws applicable to this operation; that the statements made in this APD package are, to the best of my knowledge, true and correct; and that the work associated with the operations proposed herein will be performed in conformity with this APD package and the terms and conditions under which it is approved. I also certify that I, or the company I represent, am responsible for the operations conducted under this application with bond coverage provided by Nationwide Bond ES0085. These statements are subject to the provisions of 18 U.S.C. 1001 for the filing of false statements.



Kristina Mickens
Regulatory Specialist

Date: 10/16/2013