

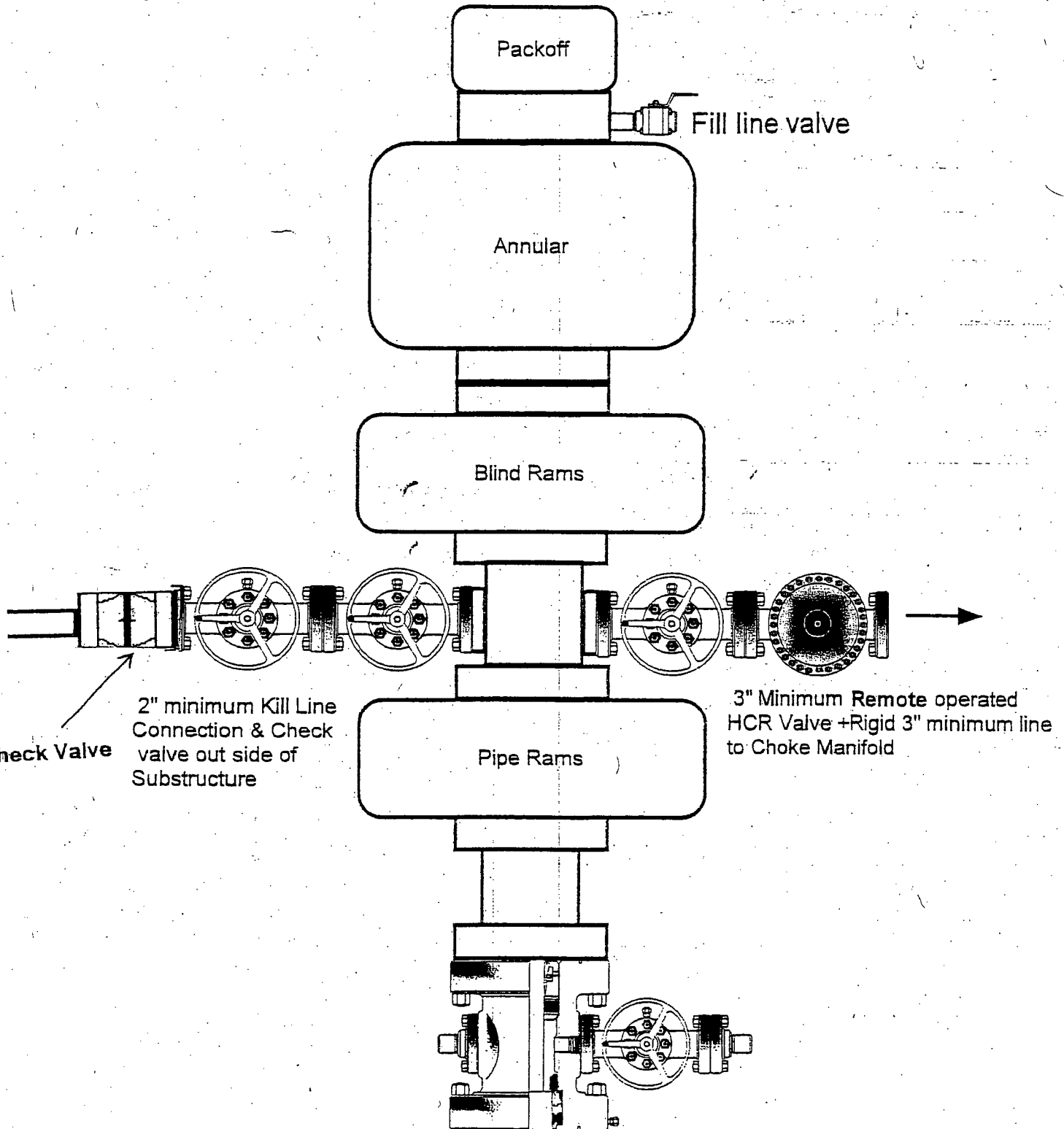
McELVAIN ENERGY, INC.

13 5/8" 3000 PSI

HC233 OGD

APR 04 2016

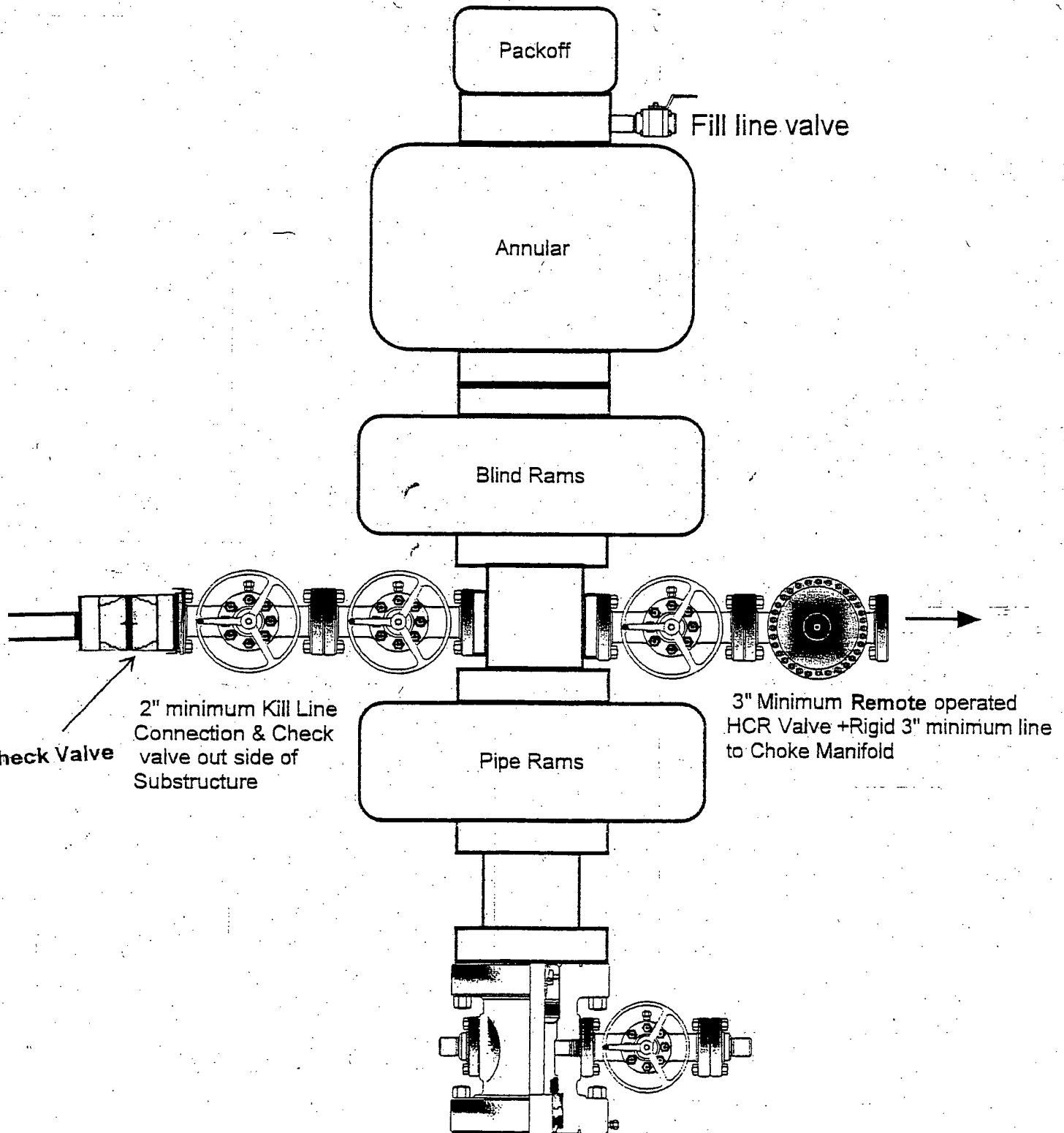
RECEIVED



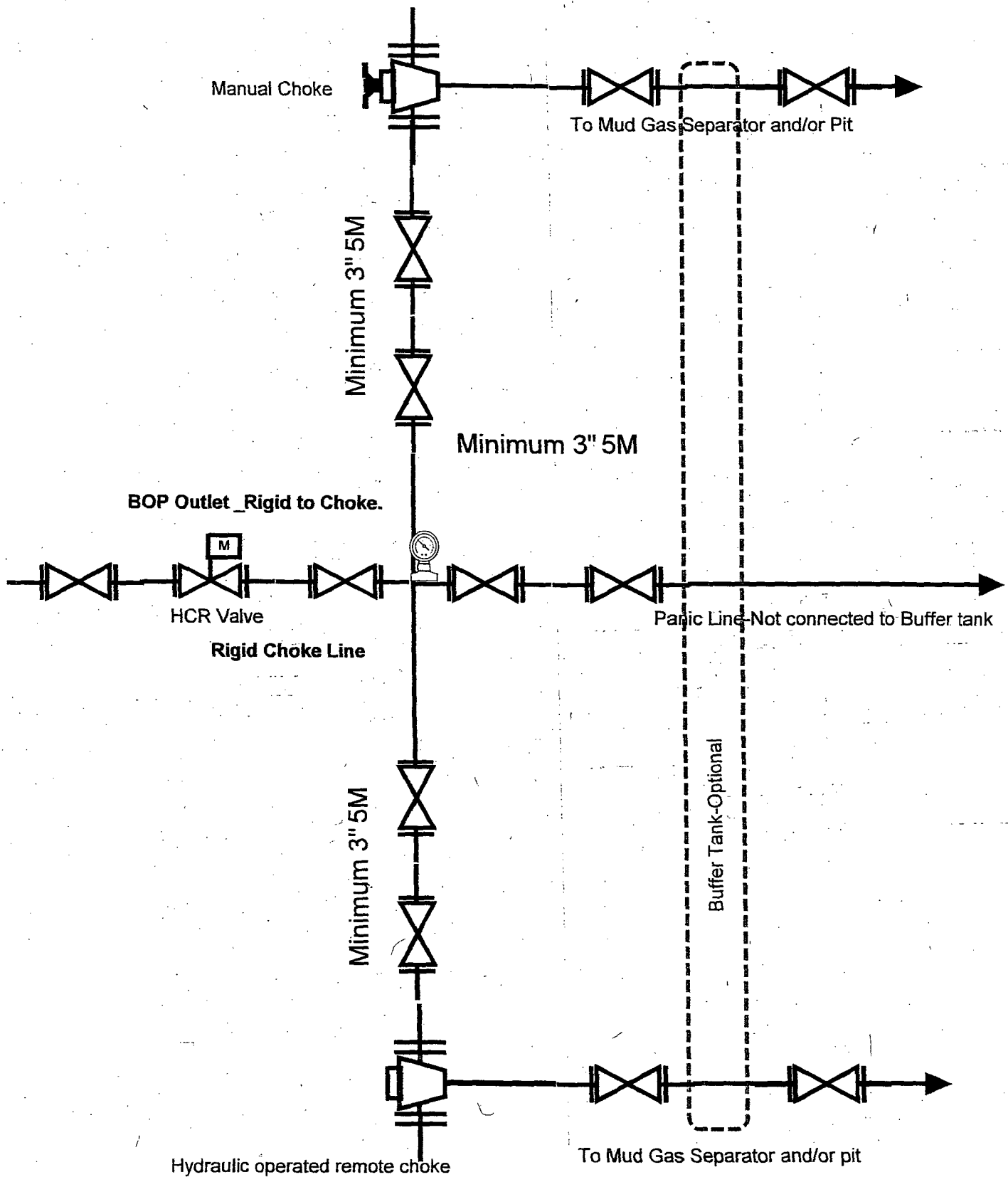
APR 14 2016

McELVAIN ENERGY, INC.

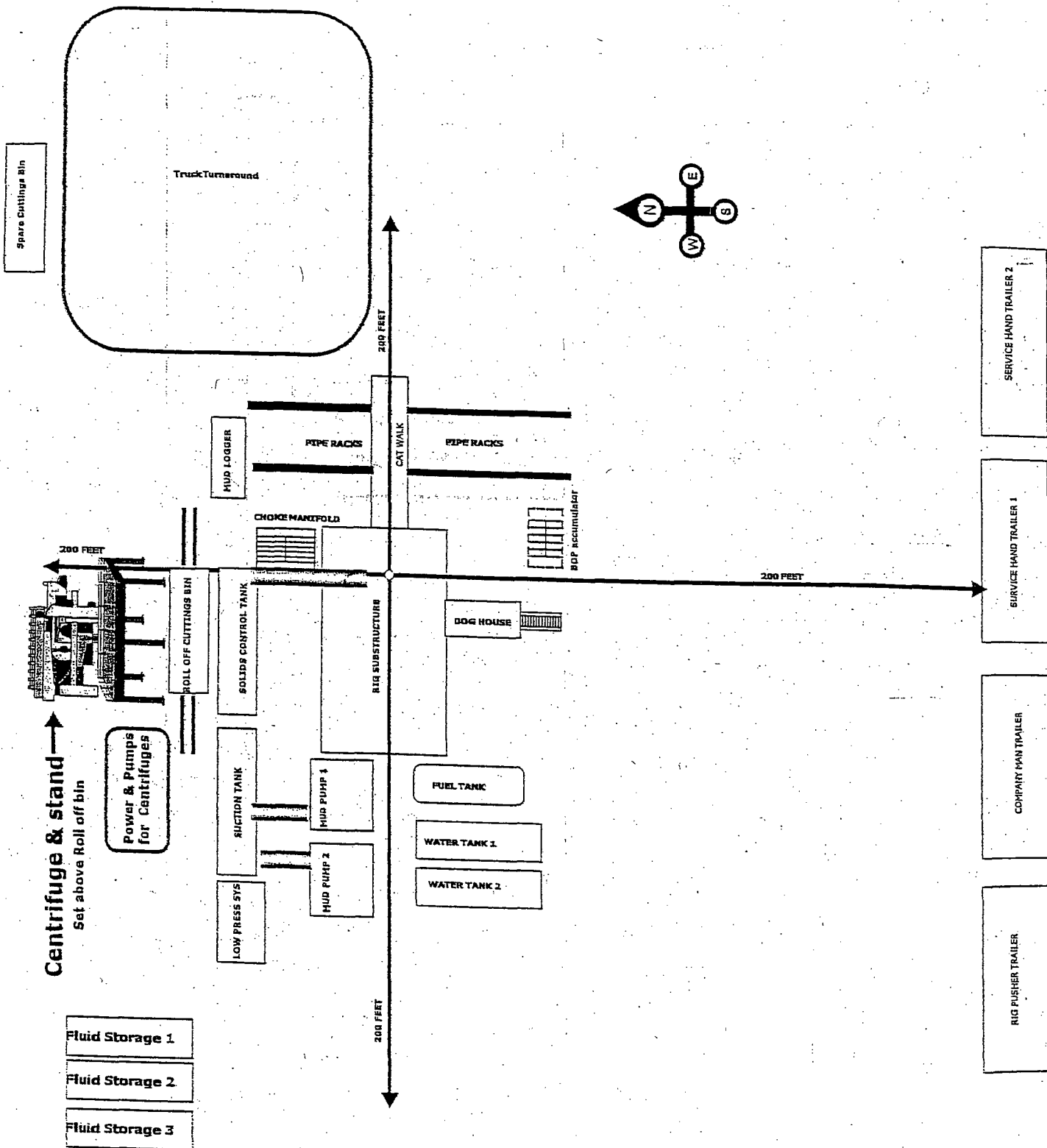
11" 5000 PSI



5,000 psi Manifold Equipment- Configuration of chokes may vary.



# Closed Loop Oil Well



Note: The Rig and Closed System Company for this well have not been selected thus the set up shown is simply generic.

**HOBBS OGD**

**APR 04 2016**

**RECEIVED**

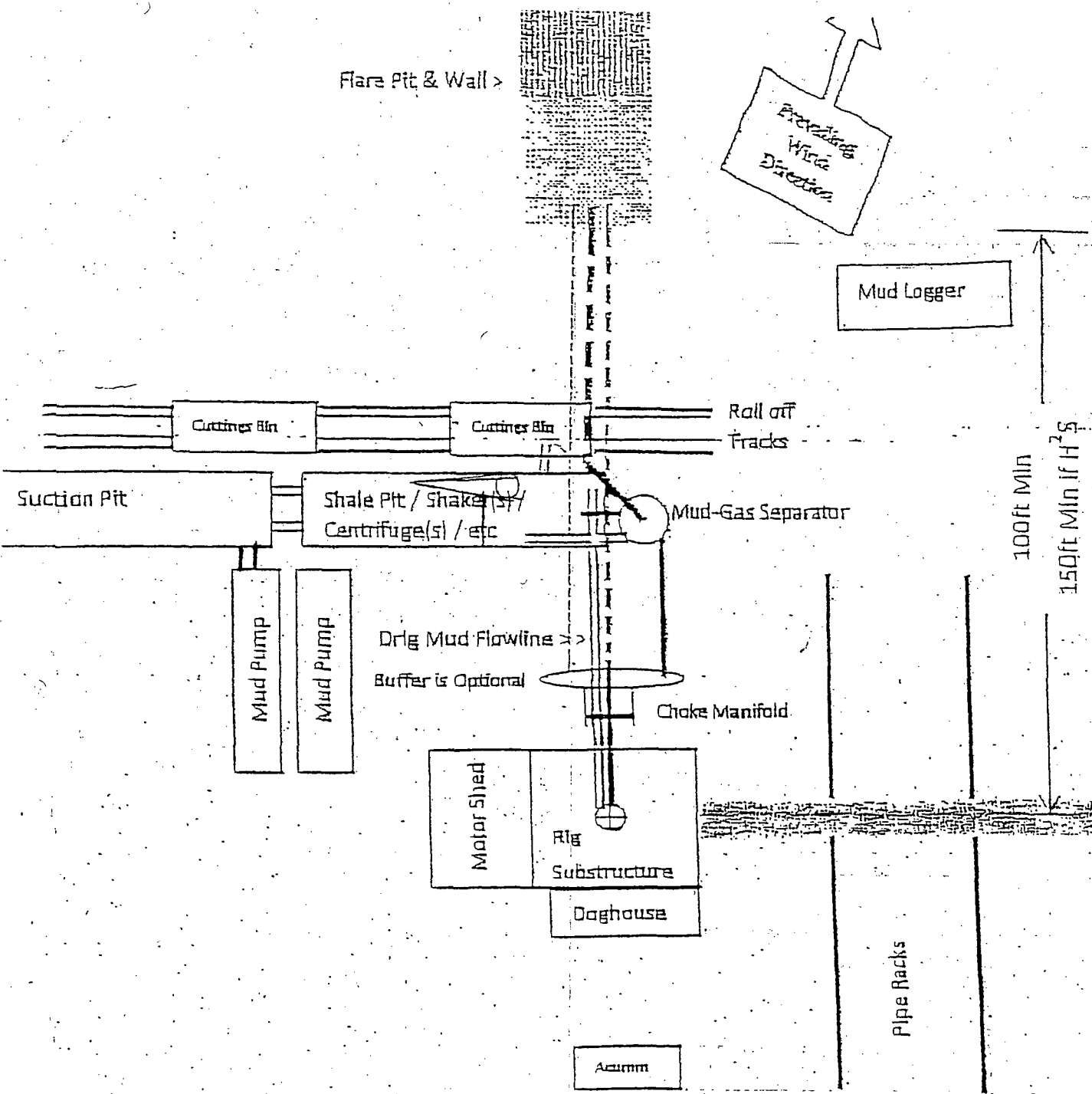
## **Operations and Maintenance Plan**

Closed Loop equipment will be inspected and monitored closely on a daily basis by each drilling rig Tour and by those hired specifically to operate the equipment. Any leak or release detected will be repaired immediately and the proper NMOCD official will be notified within the 48 hr requirement. A large release will require McELVAIN ENERGY, INC. representatives to contact BLM immediately at the Carlsbad office "575 234 5972" Hobbs "575 393 3612" as well as the NMOCD @ 575 393 6161 as stated by NMOCD rule 116.

## **Closure Plan**

During and after drilling operations, liquids (which apply), all drill cuttings and drilling fluids will be hauled and disposed of at the R-360 disposal (permit number NM 01-0006) located about 30 miles East of Carlsbad, New Mexico. An alternate approved disposal site has been selected Parabo disposal "Sundance" which is 4 miles East of Eunice (permit number NM 01-0003). The Second site would be used in the event of economics or physical problems with R-360 disposal.

McELVAIN ENERGY, INC.  
EK 30 BS2 FEDERAL COM, #3H  
UNIT "M" SECTION 30  
T18S-R34E LEA CO. NM



EXPANDED VIEW OF  
RIG LAYOUT PLAT  
FLOWLINES TO MUD-GAS  
SEPERATOR AND BLOWDOWN  
LINES TO FLARE PIT