

**HOBBS OCD**

**APR 04 2016**

**COG Operating LLC**

**RECEIVED**

## **Hydrogen Sulfide Drilling Operation Plan**

### **I. HYDROGEN SULFIDE TRAINING**

All personnel, whether regularly assigned, contracted, or employed on an unscheduled basis, will receive training from a qualified instructor in the following areas prior to commencing drilling operations on this well:

1. The hazards and characteristics of hydrogen sulfide (H<sub>2</sub>S)
2. The proper use and maintenance of personal protective equipment and life support systems.
3. The proper use of H<sub>2</sub>S detectors, alarms, warning systems, briefing areas, evacuation procedures, and prevailing winds.
4. The proper techniques for first aid and rescue procedures.

In addition, supervisory personnel will be trained in the following areas:

1. The effects of H<sub>2</sub>S on metal components. If high tensile tubulars are to be used, personnel will be trained in their special maintenance requirements.
2. Corrective action and shut-in procedures when drilling or reworking a well and blowout prevention and well control procedures.
3. The contents and requirements of the H<sub>2</sub>S Drilling Operations Plan and Public Protection Plan.

There will be an initial training session just prior to encountering a known or probable H<sub>2</sub>S zone (within 3 days or 500 feet) and weekly H<sub>2</sub>S and well control drills for all personnel in each crew. The initial training session shall include a review of the site specific H<sub>2</sub>S Drilling Operations Plan and the Public Protection Plan. **The concentrations of H<sub>2</sub>S of wells in this area from surface to TD are low enough that a contingency plan is not required.**

---

**APR 14 2016**

## **II. H2S SAFETY EQUIPMENT AND SYSTEMS**

Note: All H2S safety equipment and systems will be installed, tested, and operational when drilling reaches a depth of 500 feet above, or three days prior to penetrating the first zone containing or reasonable expected to contain H2S.

### **1. Well Control Equipment:**

- A. Flare line.
- B. Choke manifold with minimum of one remotely operated choke.
- C. Closed Loop Blow Down Tank
- D. Blind rams and pipe rams to accommodate all pipe sizes with properly sized closing unit.
- E. Auxiliary equipment may include if applicable: mud-gas separator, annular preventer & rotating head.

### **2. Protective equipment for essential personnel:**

- A. SCBA (Self contained breathing apparatus) 30-minute units located in the doghouse and at briefing areas, as indicated on well site diagram.

### **3. H2S detection and monitoring equipment:**

- A. Portable H2S monitors positioned on location for best coverage and response. These units have warning lights and audible sirens when H2S levels of 20 PPM are reached.

### **4. Visual warning systems:**

- A. Wind direction indicators as shown on well site diagram.
- B. Caution/Danger signs (Exhibit #7) shall be posted on roads providing direct access to location. Signs will be painted a high visibility yellow with black lettering of sufficient size to be readable at a reasonable distance from the immediate location. Bilingual signs will be used, when appropriate. See example attached.

### **5. Mud program:**

- A. The mud program has been designed to minimize the volume of H2S circulated to surface. Proper mud weight, safe drilling practices, and the use of H2S scavengers will minimize hazards when penetrating H2S bearing zones.
-

**6. Metallurgy:**

- A. All drill strings, casings, tubing, wellhead, blowout preventer, drilling spool, kill lines, choke manifold and lines, and valves shall be suitable for H2S service.
- B. All elastomers used for packing and seals shall be H2S trim.

**7. Communication:**

- A. Radio communications in company vehicles including cellular telephone and 2-way radio.
- B. Land line (telephone) communication at Office.

**8. Well testing:**

- A. Drill stem testing will be performed with a minimum number of personnel in the immediate vicinity, which are necessary to safely and adequately conduct the test. The drill stem testing will be conducted during daylight hours and formation fluids will not be flowed to the surface. All drill-stem-testing operations conducted in an H2S environment will use the closed chamber method of testing.
- B. There will be no drill stem testing.

**EXHIBIT #7**

**WARNING**  
**YOU ARE ENTERING AN H2S**  
**AUTHORIZED PERSONNEL ONLY**

- 1. BEARDS OR CONTACT LENSES NOT ALLOWED
- 2. HARD HATS REQUIRED
- 3. SMOKING IN DESIGNATED AREAS ONLY
- 4. BE WIND CONSCIOUS AT ALL TIMES
- 5. CHECK WITH COG OPERATING FOREMAN AT

**COG OPERATING LLC**  
**1-432-683-7443**  
**1-575-746-2010**

**EDDY COUNTY EMERGENCY NUMBERS**

ARTESIA FIRE DEPT. 575-746-5050  
ARTESIA POLICE DEPT. 575-746-5000  
EDDY CO. SHERIFF DEPT. 575-746-9888

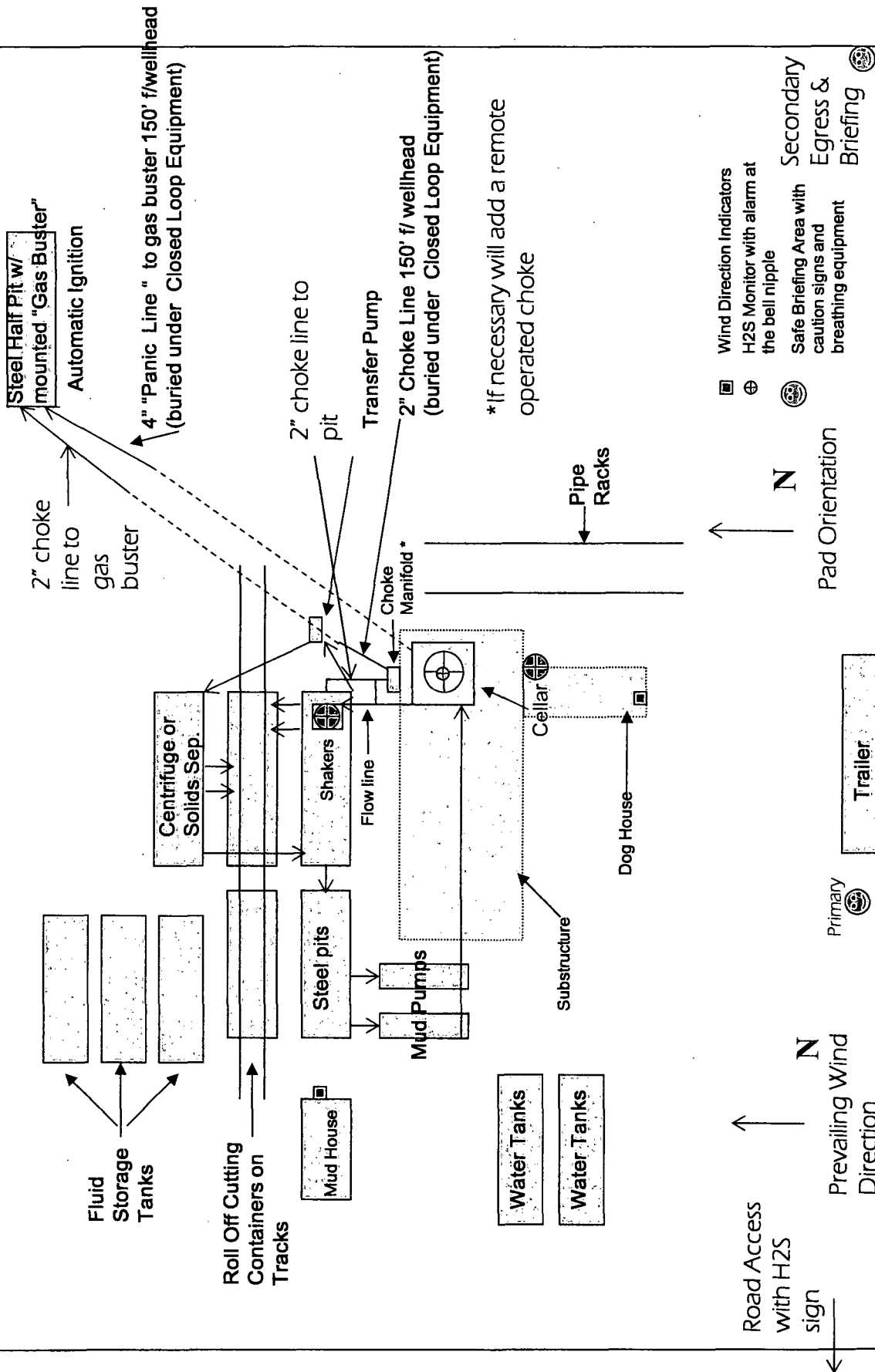
**LEA COUNTY EMERGENCY NUMBERS**

HOBBS FIRE DEPT. 575-397-9308  
HOBBS POLICE DEPT. 575-397-9285  
LEA CO. SHERIFF DEPT. 575-396-1196

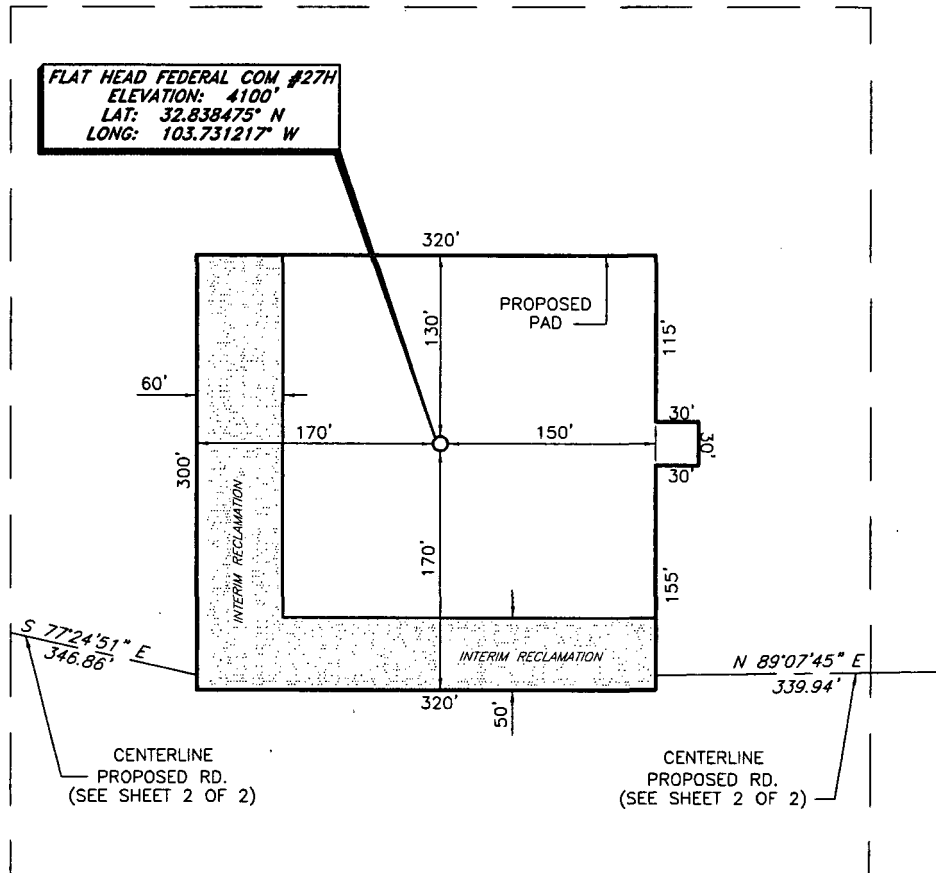
COG Operating LLC

# EXHIBIT

Drilling Location - H2S Safety Equipment Diagram



COG OPERATING, LLC  
Interim Reclamation  
Flat Head Federal Com #27H  
(1170' FNL & 990' FEL)  
Section 14, T-17-S, R-32-E,  
N. M. P. M., Lea Co., New Mexico



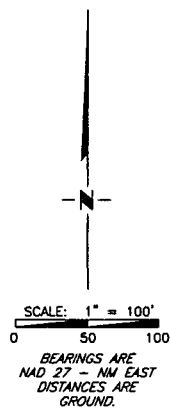
DIRECTIONS TO LOCATION

From the intersection of Lease Rd. 126 (Maljamar Rd.) and Lease Rd. 125 (Mescalero):

Go Southeast on Mescalero Rd. approx. 1.5 mi;

Turn Left and go North thru the gate to the proposed road;

Follow road survey approx. 0.3 mi East to this location.

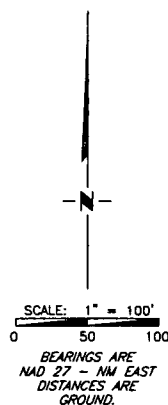
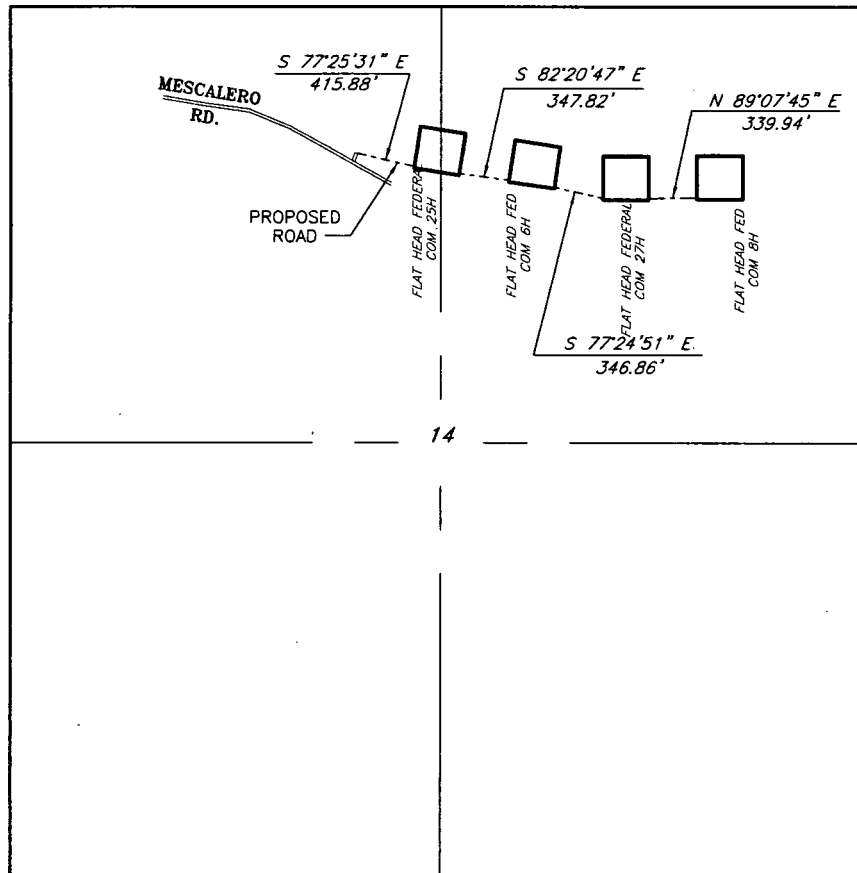


Copyright 2012 - All Rights Reserved

PROSPERITY CONSULTANTS, LLC			SCALE: 1" = 100'	
			DATE: 6/20/13	
			SURVEYED BY: GB/SM	
			DRAWN BY: DR	
			APPROVED BY: LWB	
			SHEET : 1 OF 1	
1	Well Name	2/4/15		
NO.	REVISION	DATE		
JOB NO.: LS130119				
DWG. NO.: 130119REC				
2251 Double Creek Drive, Suite 602, Round Rock, Texas 78664				
o (512) 992-2087 f (512) 251-2518				

# COG OPERATING, LLC

Flat Head Federal Com #27H  
(1170' FNL & 990' FEL)  
Section 14, T-17-S, R-32-E,  
N. M. P. M., Lea Co., New Mexico



Copyright 2012 - All Rights Reserved

1	Well Name	2/4/15
NO.	REVISION	DATE
JOB NO.:	LS130119	
DWG. NO.:	130119PAD2	

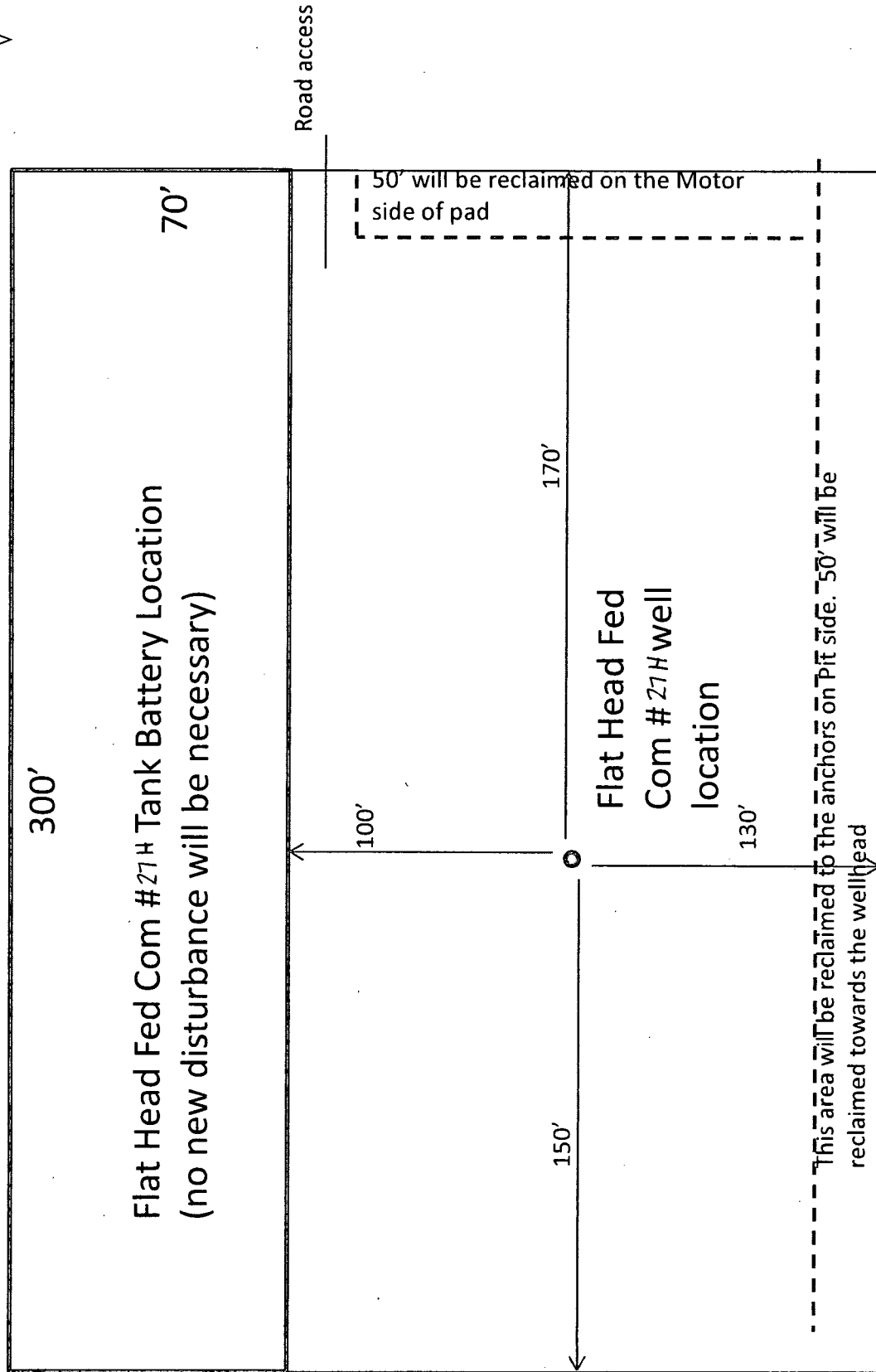
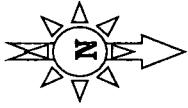
PROSPERITY CONSULTANTS, LLC



2251 Double Creek Drive, Suite 602, Round Rock, Texas 78664

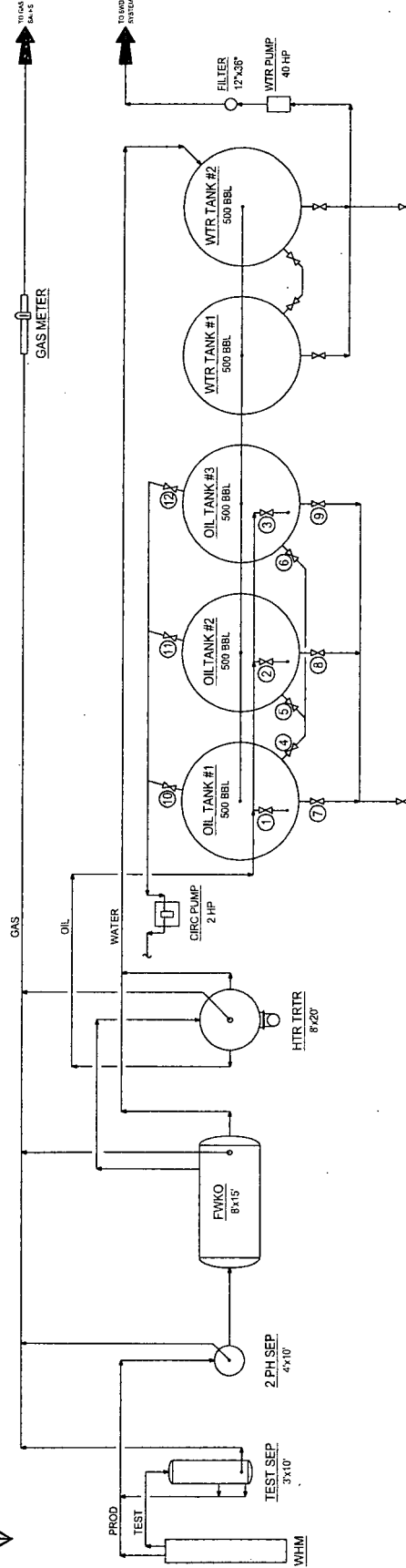
o (512) 992-2087 f (512) 251-2518

SCALE: 1" = 1000'
DATE: 6/20/13
SURVEYED BY: GB/S
DRAWN BY: DR
APPROVED BY: LWB
SHEET : 2 OF 2



- Production Phase - Oil Tank #1**
- Valve 1 open
  - Valves 2 and 3 closed
  - Valves 4, 5, and 6 open
  - Valves 7, 8, and 9 closed
  - Valves 10, 11, and 12 closed
- Sales Phase - Oil Tank #1**
- Valve 1 closed
  - Valves 2 or 3 open
  - Valve 4 closed
  - Valves 5 and 6 open
  - Valve 7 open
  - Valves 8 and 9 closed
  - Valves 10, 11, and 12 closed

North



**NOTES:**

Flathead Federal Com 7HTank Battery

CONFO  
NEW MEXICO SHELF ASSET  
PRODUCTION FACILITIES  
STANDARD TANK BATTERY "A"

NO.	DATE	DESCRIPTION	BY	CHK	APP
1	08/20/72	REVISION	CHS	CHS	CHS
2	08/20/72	REVISION	CHS	CHS	CHS
3	08/20/72	REVISION	CHS	CHS	CHS
4	08/20/72	REVISION	CHS	CHS	CHS
5	08/20/72	REVISION	CHS	CHS	CHS
6	08/20/72	REVISION	CHS	CHS	CHS
7	08/20/72	REVISION	CHS	CHS	CHS
8	08/20/72	REVISION	CHS	CHS	CHS
9	08/20/72	REVISION	CHS	CHS	CHS
10	08/20/72	REVISION	CHS	CHS	CHS
11	08/20/72	REVISION	CHS	CHS	CHS
12	08/20/72	REVISION	CHS	CHS	CHS
13	08/20/72	REVISION	CHS	CHS	CHS
14	08/20/72	REVISION	CHS	CHS	CHS
15	08/20/72	REVISION	CHS	CHS	CHS
16	08/20/72	REVISION	CHS	CHS	CHS
17	08/20/72	REVISION	CHS	CHS	CHS
18	08/20/72	REVISION	CHS	CHS	CHS
19	08/20/72	REVISION	CHS	CHS	CHS
20	08/20/72	REVISION	CHS	CHS	CHS
21	08/20/72	REVISION	CHS	CHS	CHS
22	08/20/72	REVISION	CHS	CHS	CHS
23	08/20/72	REVISION	CHS	CHS	CHS
24	08/20/72	REVISION	CHS	CHS	CHS
25	08/20/72	REVISION	CHS	CHS	CHS
26	08/20/72	REVISION	CHS	CHS	CHS
27	08/20/72	REVISION	CHS	CHS	CHS
28	08/20/72	REVISION	CHS	CHS	CHS
29	08/20/72	REVISION	CHS	CHS	CHS
30	08/20/72	REVISION	CHS	CHS	CHS
31	08/20/72	REVISION	CHS	CHS	CHS
32	08/20/72	REVISION	CHS	CHS	CHS
33	08/20/72	REVISION	CHS	CHS	CHS
34	08/20/72	REVISION	CHS	CHS	CHS
35	08/20/72	REVISION	CHS	CHS	CHS
36	08/20/72	REVISION	CHS	CHS	CHS
37	08/20/72	REVISION	CHS	CHS	CHS
38	08/20/72	REVISION	CHS	CHS	CHS
39	08/20/72	REVISION	CHS	CHS	CHS
40	08/20/72	REVISION	CHS	CHS	CHS
41	08/20/72	REVISION	CHS	CHS	CHS
42	08/20/72	REVISION	CHS	CHS	CHS
43	08/20/72	REVISION	CHS	CHS	CHS
44	08/20/72	REVISION	CHS	CHS	CHS
45	08/20/72	REVISION	CHS	CHS	CHS
46	08/20/72	REVISION	CHS	CHS	CHS
47	08/20/72	REVISION	CHS	CHS	CHS
48	08/20/72	REVISION	CHS	CHS	CHS
49	08/20/72	REVISION	CHS	CHS	CHS
50	08/20/72	REVISION	CHS	CHS	CHS
51	08/20/72	REVISION	CHS	CHS	CHS
52	08/20/72	REVISION	CHS	CHS	CHS
53	08/20/72	REVISION	CHS	CHS	CHS
54	08/20/72	REVISION	CHS	CHS	CHS
55	08/20/72	REVISION	CHS	CHS	CHS
56	08/20/72	REVISION	CHS	CHS	CHS
57	08/20/72	REVISION	CHS	CHS	CHS
58	08/20/72	REVISION	CHS	CHS	CHS
59	08/20/72	REVISION	CHS	CHS	CHS
60	08/20/72	REVISION	CHS	CHS	CHS
61	08/20/72	REVISION	CHS	CHS	CHS
62	08/20/72	REVISION	CHS	CHS	CHS
63	08/20/72	REVISION	CHS	CHS	CHS
64	08/20/72	REVISION	CHS	CHS	CHS
65	08/20/72	REVISION	CHS	CHS	CHS
66	08/20/72	REVISION	CHS	CHS	CHS
67	08/20/72	REVISION	CHS	CHS	CHS
68	08/20/72	REVISION	CHS	CHS	CHS
69	08/20/72	REVISION	CHS	CHS	CHS
70	08/20/72	REVISION	CHS	CHS	CHS
71	08/20/72	REVISION	CHS	CHS	CHS
72	08/20/72	REVISION	CHS	CHS	CHS
73	08/20/72	REVISION	CHS	CHS	CHS
74	08/20/72	REVISION	CHS	CHS	CHS
75	08/20/72	REVISION	CHS	CHS	CHS
76	08/20/72	REVISION	CHS	CHS	CHS
77	08/20/72	REVISION	CHS	CHS	CHS
78	08/20/72	REVISION	CHS	CHS	CHS
79	08/20/72	REVISION	CHS	CHS	CHS
80	08/20/72	REVISION	CHS	CHS	CHS
81	08/20/72	REVISION	CHS	CHS	CHS
82	08/20/72	REVISION	CHS	CHS	CHS
83	08/20/72	REVISION	CHS	CHS	CHS
84	08/20/72	REVISION	CHS	CHS	CHS
85	08/20/72	REVISION	CHS	CHS	CHS
86	08/20/72	REVISION	CHS	CHS	CHS
87	08/20/72	REVISION	CHS	CHS	CHS
88	08/20/72	REVISION	CHS	CHS	CHS
89	08/20/72	REVISION	CHS	CHS	CHS
90	08/20/72	REVISION	CHS	CHS	CHS
91	08/20/72	REVISION	CHS	CHS	CHS
92	08/20/72	REVISION	CHS	CHS	CHS
93	08/20/72	REVISION	CHS	CHS	CHS
94	08/20/72	REVISION	CHS	CHS	CHS
95	08/20/72	REVISION	CHS	CHS	CHS
96	08/20/72	REVISION	CHS	CHS	CHS
97	08/20/72	REVISION	CHS	CHS	CHS
98	08/20/72	REVISION	CHS	CHS	CHS
99	08/20/72	REVISION	CHS	CHS	CHS
100	08/20/72	REVISION	CHS	CHS	CHS

CONFO OPERATING LLC  
600 MIDLAND, TEXAS 79701

NEW MEXICO  
D-1700-B1-005