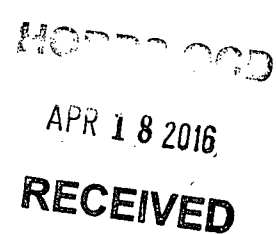


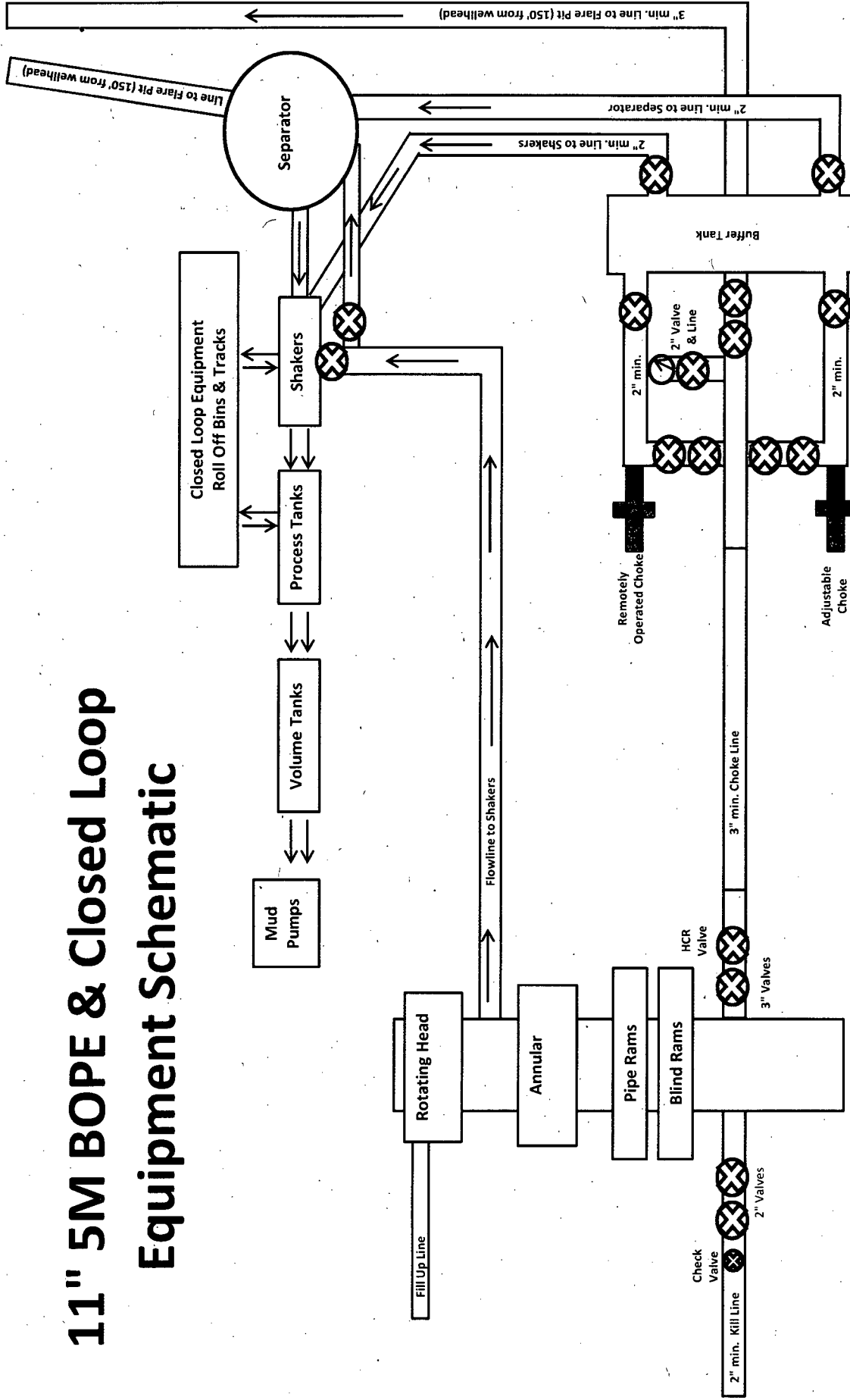
Equipment Schematic



Well Name: Pepper Ridge 15 A3CN Fed Com #1H

APR 22 2016

11" 5M BOPE & Closed Loop Equipment Schematic



Note: All valves & lines on choke manifold are 3" unless otherwise noted. Exact manifold configuration may vary.

Exhibit 2
Well Name: Pepper Ridge 15 A3CN Fed Com #1H



GATES E & S NORTH AMERICA, INC.
134 44TH STREET
CORPUS CHRISTI, TEXAS 78405

PHONE: 361-887-9807
FAX: 361-887-0812
EMAIL: Tim.Cantu@gates.com
WEB: www.gates.com

10K CEMENTING ASSEMBLY PRESSURE TEST CERTIFICATE

Customer :	AUSTIN DISTRIBUTING	Test Date:	4/30/2015
Customer Ref. :	4060578	Hose Serial No.:	D-043015-7
Invoice No. :	500506	Created By:	JUSTIN CROPPER
Product Description:	10K3.548.0CK4.1/1610KFLGE/E LE		
End Fitting 1 :	4 1/16 10K FLG	End Fitting 2 :	4 1/16 10K FLG
Gates Part No. :	4773-6290	Assembly Code :	L36554102914D-043015-7
Working Pressure :	10,000 PSI	Test Pressure :	15,000 PSI

Gates E & S North America, Inc. certifies that the following hose assembly has been tested to the Gates Oilfield Roughneck Agreement/Specification requirements and passed the 15 minute hydrostatic test per API Spec 7K/Q1, Fifth Edition, June 2010, Test pressure 9.6.7 and per Table 9 to 15,000 psi in accordance with this product number. Hose burst pressure 9.6.7.2 exceeds the minimum of 2.5 times the working pressure per Table 9.

Quality Manager :
Date :
Signature :

QUALITY
4/30/2015
<i>Justin Cropper</i>

Production:
Date :
Signature :

PRODUCTION
4/30/2015
<i>Justin Cropper</i>

Form PTC - 01 Rev.0/2



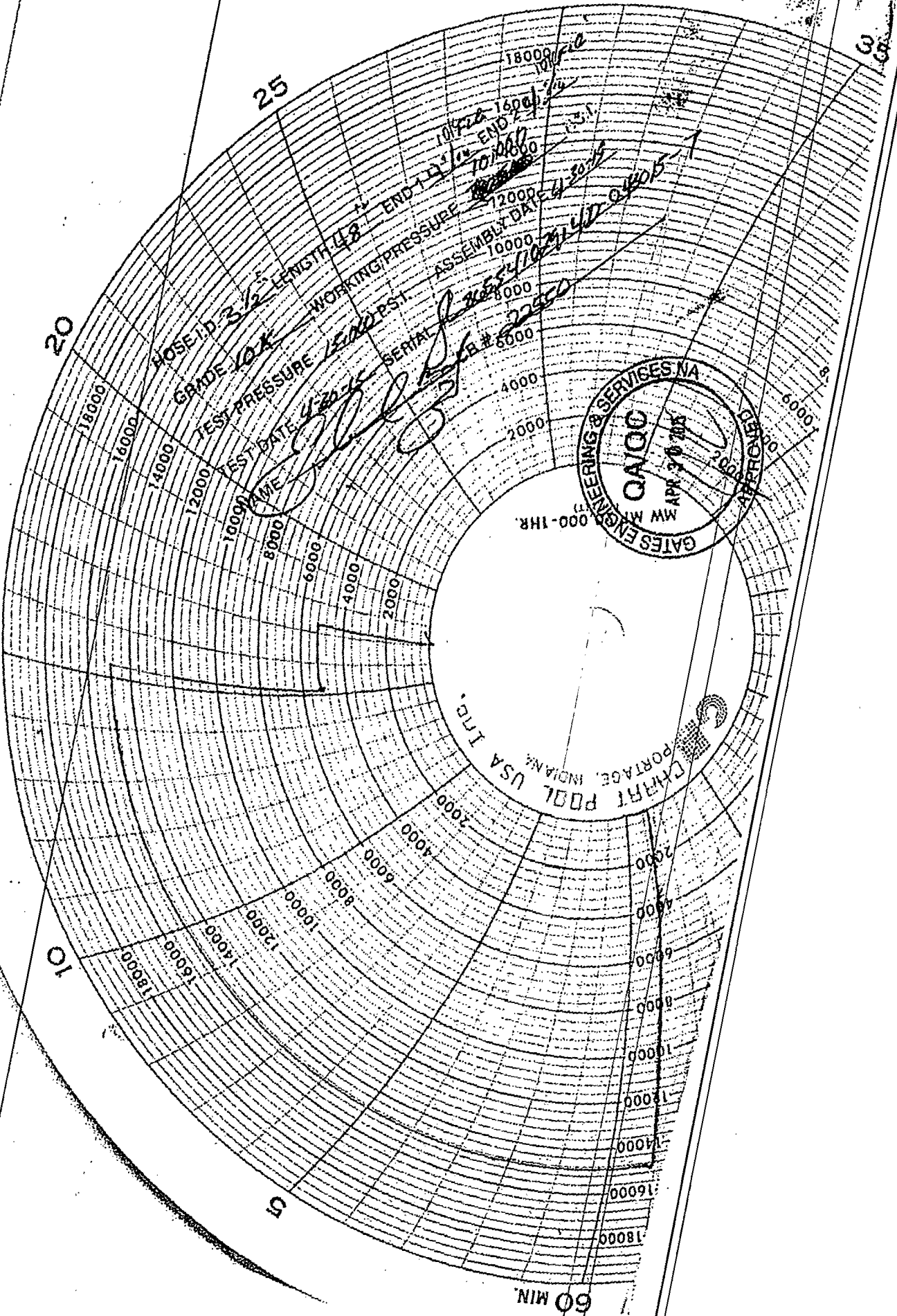
15

10

20

25

30



HOSE I.D. 3 1/2" LENGTH 48'

GRADE 100% TEST PRESSURE 15000 PSI

TEST DATE 4-20-55

WORKING PRESSURE 10000 PSI

ASSEMBLY DATE 4-20-55

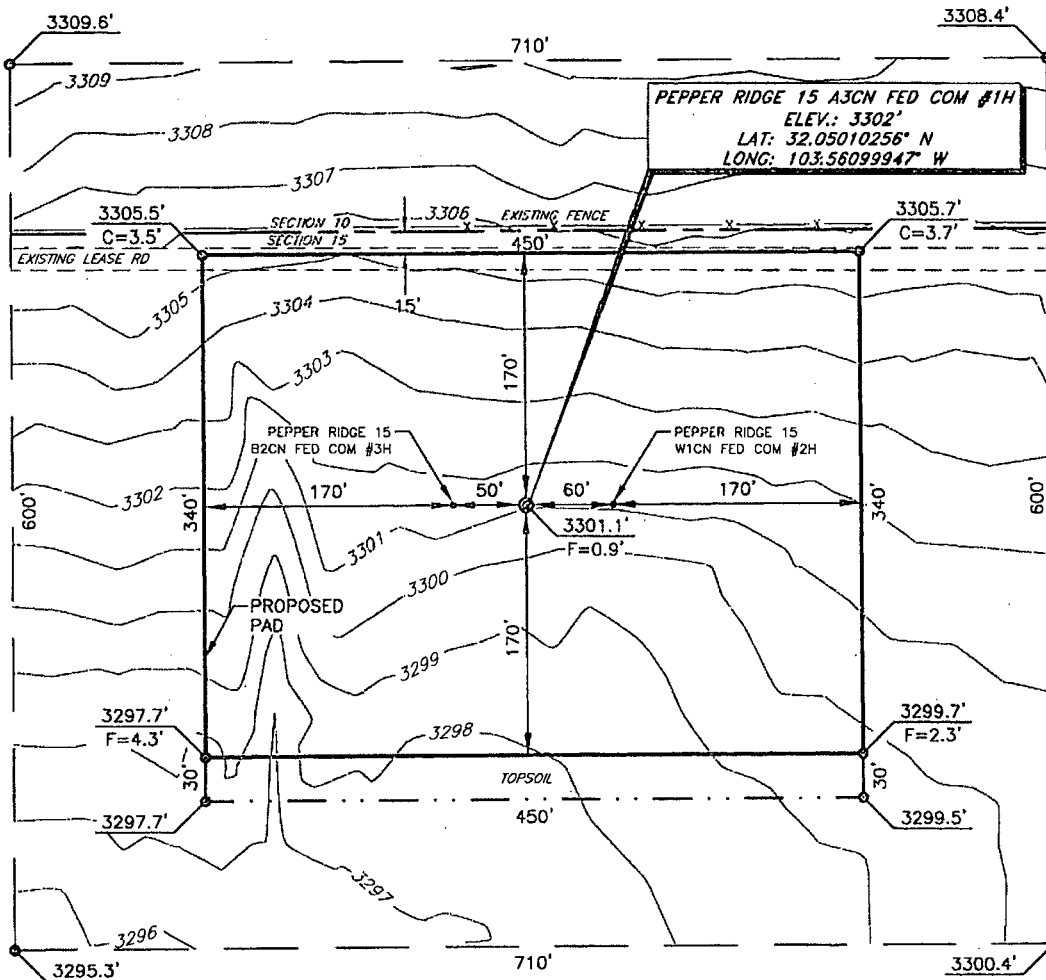
SERIAL # 22950



CHART POOL USA INC. PORTAGE, INDIANA

60 MIN.

MEWBOURNE OIL COMPANY
PEPPER RIDGE 15 A3CN FED COM #1H
(185' FNL & 2250' FWL)
SECTION 15, T26S, R33E
N. M. P. M., LEA CO., NEW MEXICO



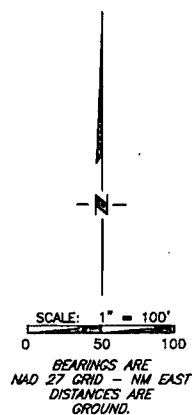
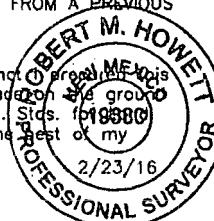
DIRECTIONS TO LOCATION

From the intersection of CR-2 (Battle Axe Rd.) and Pipeline Road;
 Go West on Pipeline Road approx. 0.3 miles to a lease road on the left;
 Turn left and go Southwest approx. 1.3 miles to a lease road on the left;
 Turn left and go South approx. 0.1 miles to a lease road on the left;
 Turn left and go East approx. 0.2 miles to location on the right.

THIS IS NOT A BOUNDARY SURVEY, APPARENT PROPERTY CORNERS AND PROPERTY LINES ARE SHOWN FOR INFORMATION ONLY. BOUNDARY DATA IS SHOWN FROM A PREVIOUS SURVEY REFERENCED HEREON.

I, R. M. Howett, a N. M. Professional Surveyor, hereby certify that a preliminary unclassified survey of a well location from an actual survey made on the ground under my direct supervision, said survey and plot meet the Min. Stds. for 1988 Surveying in the State of N. M. and are true and correct to the best of my knowledge and belief.

Robert M. Howett
 Robert M. Howett NM PS 19680



Firm No.: TX 10193838 NM 4655451

Copyright 2015 - All Rights Reserved

NO.	REVISION	DATE
JOB NO.:	LS1512651	
DWG. NO.:	1512651PAD	

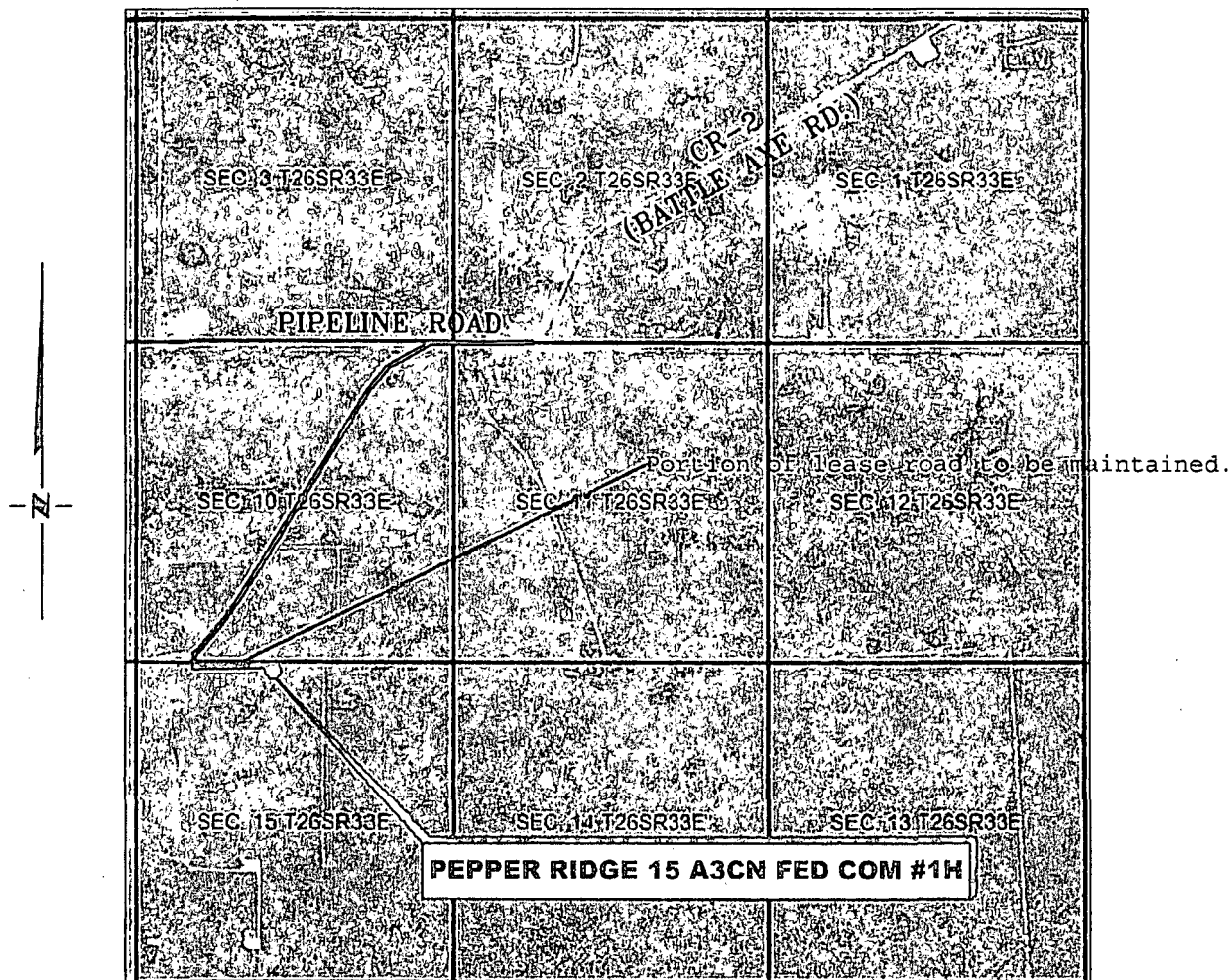
RRC

308 W. BROADWAY ST., HOBBS, NM 88240 (575) 964-8200

SCALE: 1" = 100'
DATE: 12-23-2015
SURVEYED BY: ML/CE
DRAWN BY: LPS
APPROVED BY: RMH
SHEET : 1 OF 1

VICINITY MAP

NOT TO SCALE



**SECTION 15, TWP. 26 SOUTH, RGE. 33 EAST,
N. M. P. M., EDDY CO., NEW MEXICO**

OPERATOR: Mewbourne Oil Company
LEASE: Pepper Ridge 15 A3CN Fed Com
WELL NO.: 1H

LOCATION: 185' FNL & 2250' FWL
ELEVATION: 3302'

Firm No.: TX 10193838 NM 4655451

Copyright 2014 - All Rights Reserved

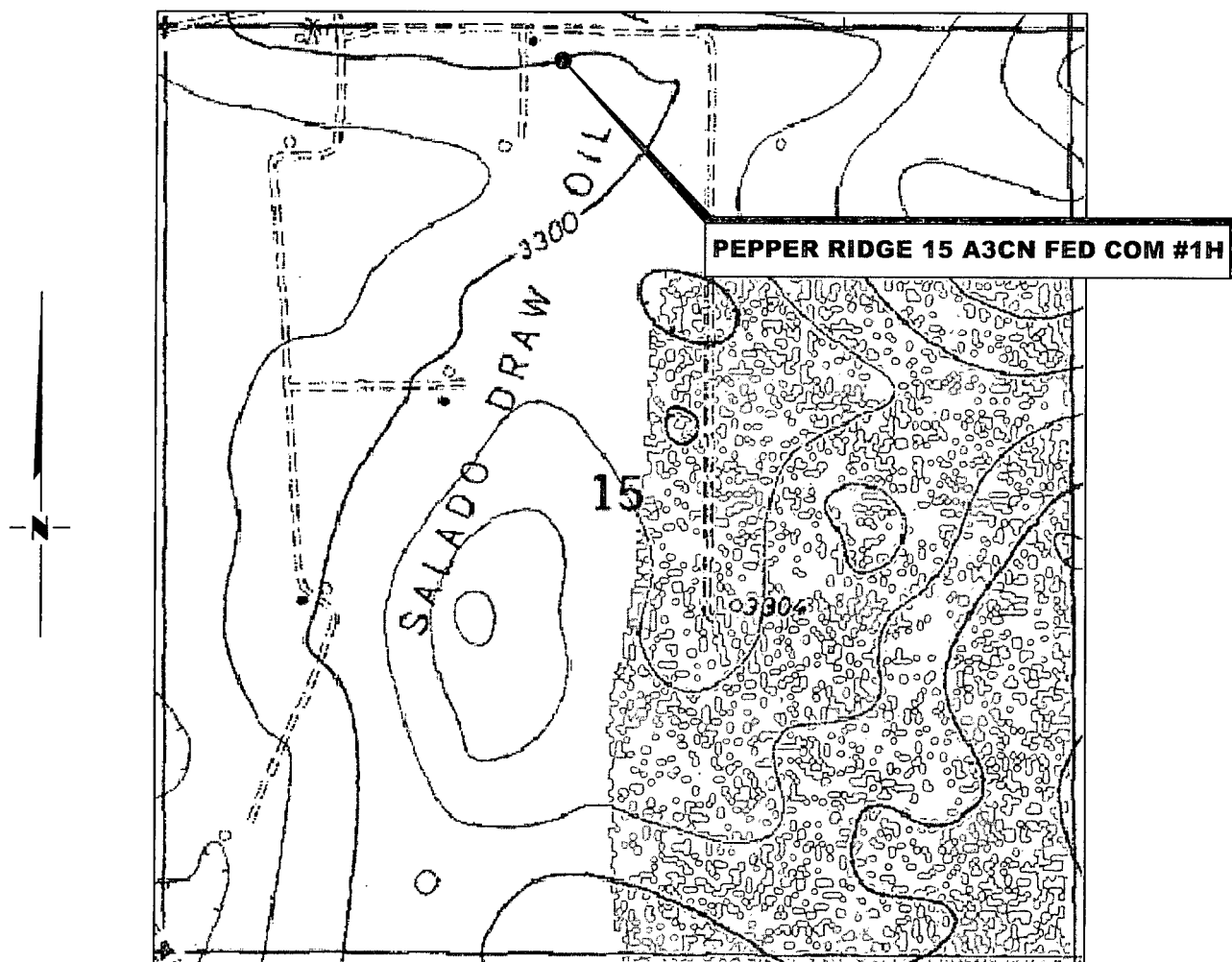
NO.	REVISION	DATE
JOB NO.:	LS1512651	
DWG. NO.:	1512651VM	

RRC

308 W. BROADWAY ST., HOBBS, NM 88240 (575) 964-8200

SCALE: NTS
DATE: 12-23-2015
SURVEYED BY: ML/CE
DRAWN BY: LPS
APPROVED BY: RMH
SHEET : 1 OF 1

LOCATION VERIFICATION MAP



*SECTION 15, TWP. 26 SOUTH, RGE. 33 EAST,
N. M. P. M., LEA CO., NEW MEXICO*

OPERATOR: Mewbourne Oil Company
 LEASE: Pepper Ridge 15 A3CN Fed Com
 WELL NO.: 1H
 ELEVATION: 3302'

LOCATION: 185' FNL & 2250' FWL
 CONTOUR INTERVAL: 10'
 USGS TOPO. SOURCE MAP:
Paduca Breaks East, NM (1973)

Firm No.: TX 10193838 NM 4655451

Copyright 2014 - All Rights Reserved

NO.	REVISION	DATE
JOB NO.: LS1512651		
DWG. NO.: 1512651LVM		

RRC

308 W. BROADWAY ST., HOBBS, NM 88240 (575) 964-8200

SCALE: 1" = 1000'
 DATE: 12-23-2015
 SURVEYED BY: ML/CE
 DRAWN BY: LPS
 APPROVED BY: RMH
 SHEET : 1 OF 1