



HOBBS OCD

APR 21 2016

RECEIVED

**Devon Energy Center
333 West Sheridan Avenue
Oklahoma City, Oklahoma 73102-5015**

Hydrogen Sulfide (H₂S) Contingency Plan

For

Cotton Draw Unit 281H

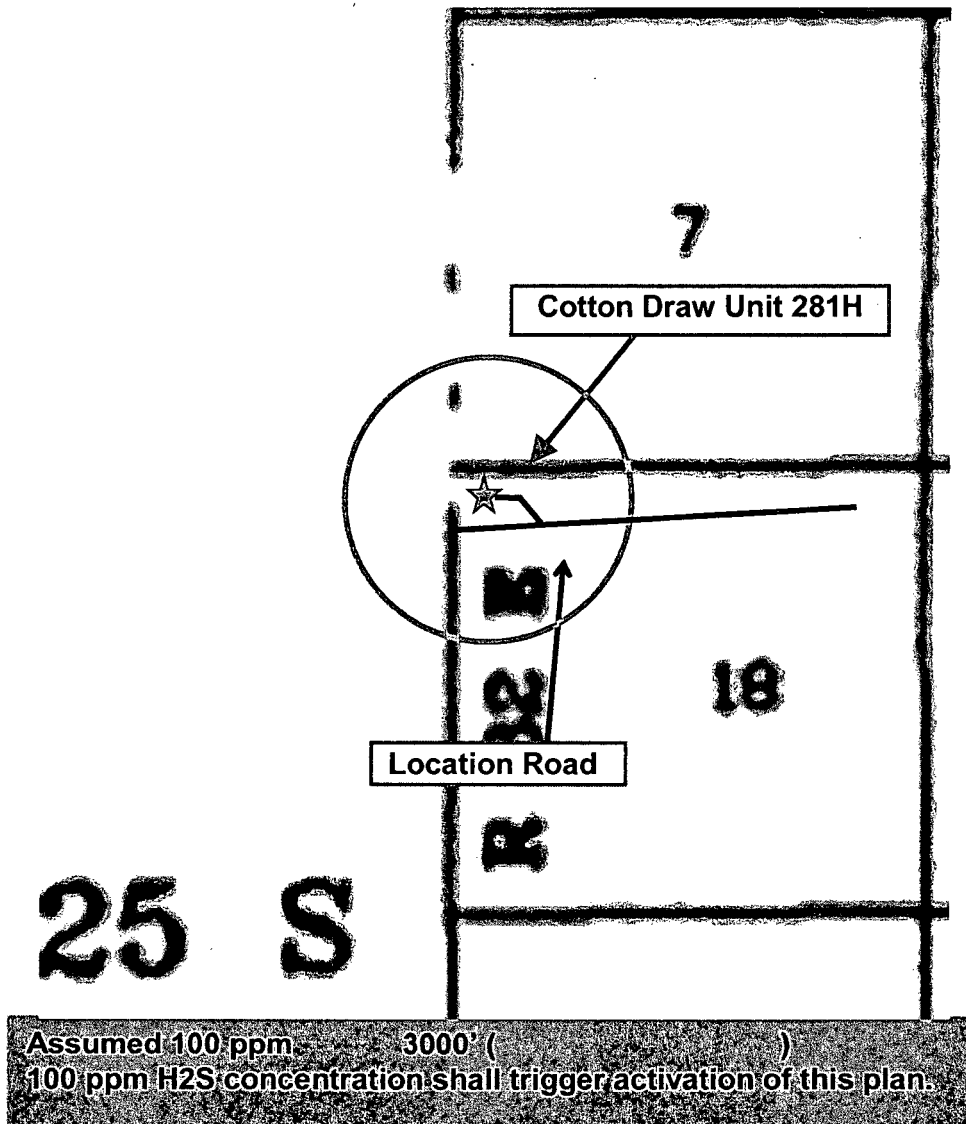
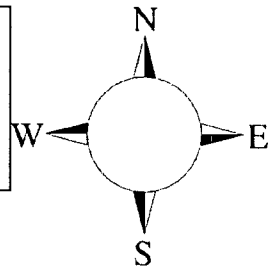
**Sec-18T-25S R-32E
233' FNL & 169' FWL
LAT. = 32.1369331' N (NAD83)
LONG = 103.7224603' W**

Lea County NM

APR 22 2016

Cotton Draw Unit 281H

This is an open drilling site. H₂S monitoring equipment and emergency response equipment will be used within 500' of zones known to contain H₂S, including warning signs, wind indicators and H₂S monitor.



Escape

Crews shall escape upwind of escaping gas in the event of an emergency release of gas. Escape can be facilitated from the location entrance road. Crews should then block the entrance to the location from the lease road so as not to allow anyone traversing into a hazardous area. The blockade should be at a safe distance outside of the ROE. There are no homes or buildings in or near the ROE.

Assumed 100 ppm ROE = 3000'

100 ppm H₂S concentration shall trigger activation of this plan.

Emergency Procedures

In the event of a release of gas containing H₂S, the first responder(s) must

- **Isolate the area and prevent entry by other persons into the 100 ppm ROE.**
- **Evacuate any public places encompassed by the 100 ppm ROE.**
- **Be equipped with H₂S monitors and air packs in order to control the release.**
- **Use the "buddy system" to ensure no injuries occur during the response**
- **Take precautions to avoid personal injury during this operation.**
- **Contact operator and/or local officials to aid in operation. See list of phone numbers attached.**
- **Have received training in the**
 - **Detection of H₂S, and**
 - **Measures for protection against the gas,**
 - **Equipment used for protection and emergency response.**

Ignition of Gas Source

Should control of the well be considered lost and ignition considered, take care to protect against exposure to Sulfur Dioxide (SO₂). Intentional ignition must be coordinated with the NMOCD and local officials. Additionally the NM State Police may become involved. NM State Police shall be the Incident Command on scene of any major release. Take care to protect downwind whenever there is an ignition of the gas

Characteristics of H₂S and SO₂

Common Name	Chemical Formula	Specific Gravity	Threshold Limit	Hazardous Limit	Lethal Concentration
Hydrogen Sulfide	H₂S	1.189 Air = 1	10 ppm	100 ppm/hr	600 ppm
Sulfur Dioxide	SO₂	2.21 Air = 1	2 ppm	N/A	1000 ppm

Contacting Authorities

Devon Energy Corp. personnel must liaison with local and state agencies to ensure a proper response to a major release. Additionally, the OCD must be notified of the release as soon as possible but no later than 4 hours. Agencies will ask for information such as type and volume of release, wind direction, location of release, etc. Be prepared with all information available. The following call list of essential and potential responders has been prepared for use during a release. Devon Energy Corp. Company response must be in coordination with

Hydrogen Sulfide Drilling Operation Plan

I. HYDROGEN SULFIDE (H₂S) TRAINING

All personnel, whether regularly assigned, contracted, or employed on an unscheduled basis, will receive training from a qualified instructor in the following areas prior to commencing drilling operations on this well:

1. The hazards and characteristics of hydrogen sulfide (H₂S)
2. The proper use and maintenance of personal protective equipment and life support systems.
3. The proper use of H₂S detectors, alarms, warning systems, briefing areas, evacuation procedures, and prevailing winds.
4. The proper techniques for first aid and rescue procedures.

In addition, supervisory personnel will be trained in the following areas:

1. The effects of H₂S metal components. If high tensile tubulars are to be used, personnel will be trained in their special maintenance requirements.
2. Corrective action and shut-in procedures when drilling or reworking a well and blowout prevention and well control procedures.
3. The contents and requirements of the H₂S Drilling Operations Plan and Public Protection Plan.

There will be an initial training session just prior to encountering a known or probable H₂S zone (within 3 days or 500 feet) and weekly H₂S and well control drills for all personnel in each crew. The initial training session shall include a review of the site specific H₂S Drilling Operations Plan and the Public Protection Plan.

II. HYDROGEN SULFIDE TRAINING

Note: All H₂S safety equipment and systems will be installed, tested, and operational when drilling reaches a depth of 500 feet above, or three days prior to penetrating the first zone containing or reasonably expected to contain H₂S.

1. Well Control Equipment

- A. Flare line
- B. Choke manifold – Remotely Operated
- C. Blind rams and pipe rams to accommodate all pipe sizes with properly sized closing unit
- D. Auxiliary equipment may include if applicable: annular preventer and rotating head.
- E. Mud/Gas Separator

2. Protective equipment for essential personnel:

30-minute SCBA units located at briefing areas, as indicated on well site diagram, with one escape unit available in the top doghouse. As it may be difficult to communicate audibly while wearing these units, hand signals shall be utilized.

3. H₂S detection and monitoring equipment:

Portable H₂S monitors positioned on location for best coverage and response. These units have warning lights which activate when H₂S levels reach 10 ppm and audible sirens which activate at 10 ppm. Sensor locations:

- Bell nipple
- Shale shaker
- Trip tank
- Suction pit
- Rig floor
- Cellar
- Choke manifold
- Living Quarters (usually the company man's trailer stairs.)

Visual warning systems:

- A. Wind direction indicators as shown on well site diagram
- B. Caution/ Danger signs shall be posted on roads providing direct access to locations. Signs will be painted a high visibility yellow with black lettering of sufficient size to be reasonable distance from the immediate location. Bilingual signs will be used when appropriate.

4. Mud program:

The mud program has been designed to minimize the volume of H₂S circulated to surface. Proper mud weight, safe drilling practices and the use of H₂S scavengers will minimize hazards when penetrating H₂S bearing zones.

5. Metallurgy:

- A. All drill strings, casings, tubing, wellhead, blowout preventer, drilling spool, kill lines, choke manifold lines, and valves shall be H₂S trim.
- B. All elastomers used for packing and seals shall be H₂S trim.

6. Communication:

- A. Company personnel have/use cellular telephones in the field.
- B. Land line (telephone) communications at Office

7. Well testing:

- A. Drill stem testing will be performed with a minimum number of personnel in the immediate vicinity, which are necessary to safety and adequately conduct the test. The drill stem testing will be conducted during daylight hours and formation fluids will not be flowed to the surface. All drill-stem-testing operations conducted in an H₂S environment will use the closed chamber method of testing.
- B. There will be no drill stem testing.

Devon Energy Corp. Company Call List

Carlsbad (575)

Cellular

Drilling Supervisor – Basin – Mark Kramer.....	405-823-4796
Drilling Supervisor – Slope – Norman Naill.....	405-760-7234
EHS Professional – Mark Hurst.....	575-513-9087

Agency Call List

Lea

Hobbs

County (575)

Lea County Communication Authority	393-3981
State Police	392-5588
City Police	397-9265
Sheriff's Office	393-2515
Ambulance	911
Fire Department.....	397-9308
LEPC (Local Emergency Planning Committee).....	393-2870
NMOCD	393-6161
US Bureau of Land Management.....	393-3612

Eddy

Carlsbad

County (575)

State Police	885-3137
City Police	885-2111
Sheriff's Office	887-7551
Ambulance	911
Fire Department.....	885-3125
LEPC (Local Emergency Planning Committee).....	887-3798
US Bureau of Land Management.....	887-6544
NM Emergency Response Commission (Santa Fe)	(505) 476-9600
24 HR	(505) 827-9126
National Emergency Response Center (Washington, DC)	(800) 424-8802
National Pollution Control Center: Direct	(703) 872-6000
For Oil Spills	(800) 280-7118

Emergency Services

Wild Well Control	(281) 784-4700
Cudd Pressure Control.....	(915) 699-0139 or (915) 563-3356
Halliburton	(575) 746-2757
B. J. Services.....	(575) 746-3569

Give

GPS

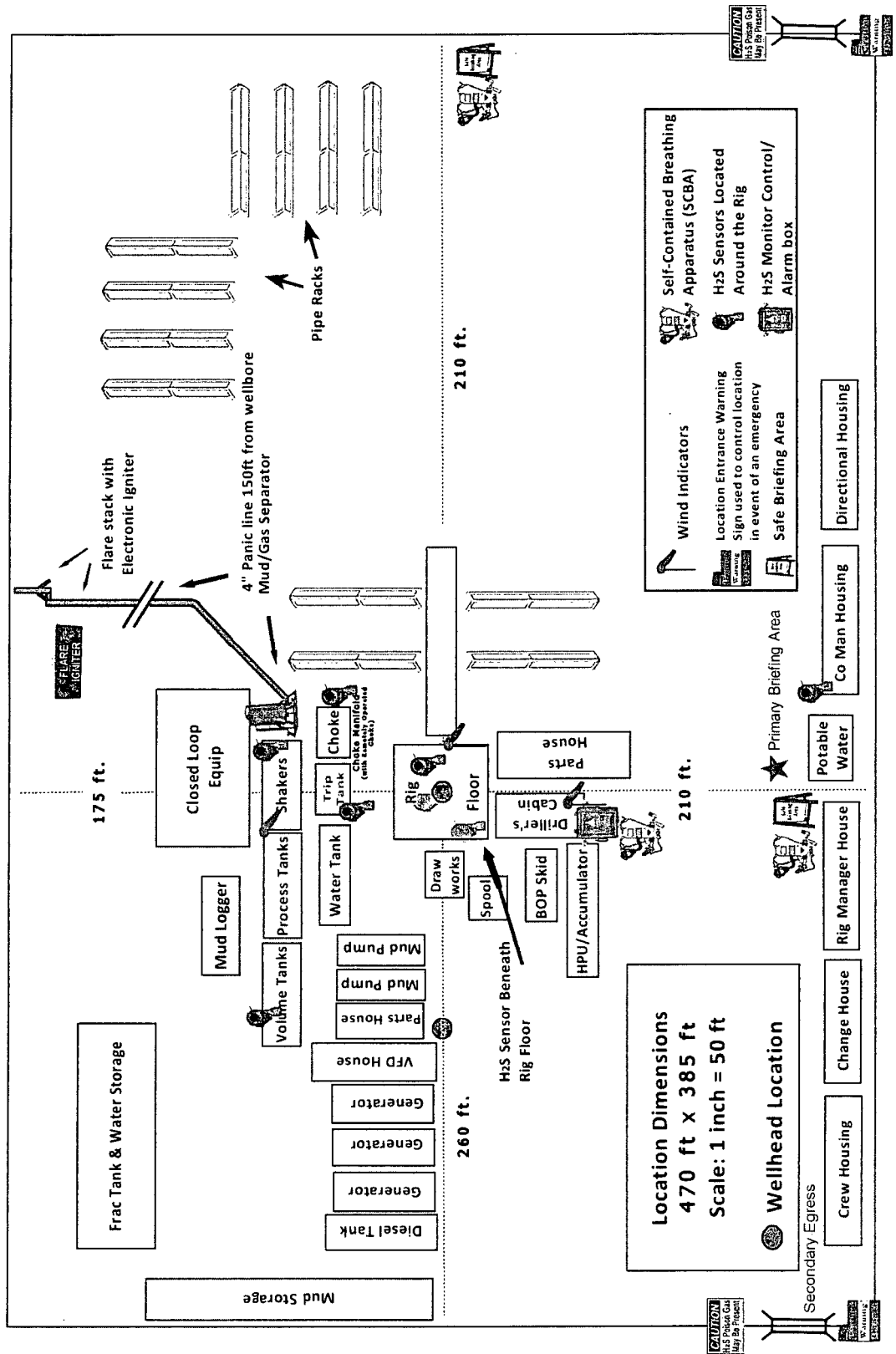
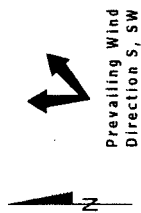
position:

Native Air – Emergency Helicopter – Hobbs.....	(575) 392-6429
Flight For Life - Lubbock, TX	(806) 743-9911
Aerocare - Lubbock, TX	(806) 747-8923
Med Flight Air Amb - Albuquerque, NM	(575) 842-4433
Lifeguard Air Med Svc. Albuquerque, NM	(575) 272-3115
Poison Control (24/7)	(800) 222-1222
Oil & Gas Pipeline 24 Hour Service.....	(800) 364-4366
NOAA – Website – www.nhc.noaa.gov	

Prepared in conjunction with
Dave Small



Devon Energy - Well Pad Rig Location Layout Safety Equipment Location





Proposed Interim Site Reclamation

Devon Energy Production Co
Cotton Draw Unit 280H &
281H
Sec. 18-T25S-R32E
Lea County, NM



Proposed
Reclamation
Area



Scale: 1in = 60ft.

470'

290'

55'

120'

50'

120'

Cotton Draw Unit 281H

Cotton Draw Unit 280H

90'

280'

90'

385'

Top Soil Area

90'

210'

Top Soil Area

470'

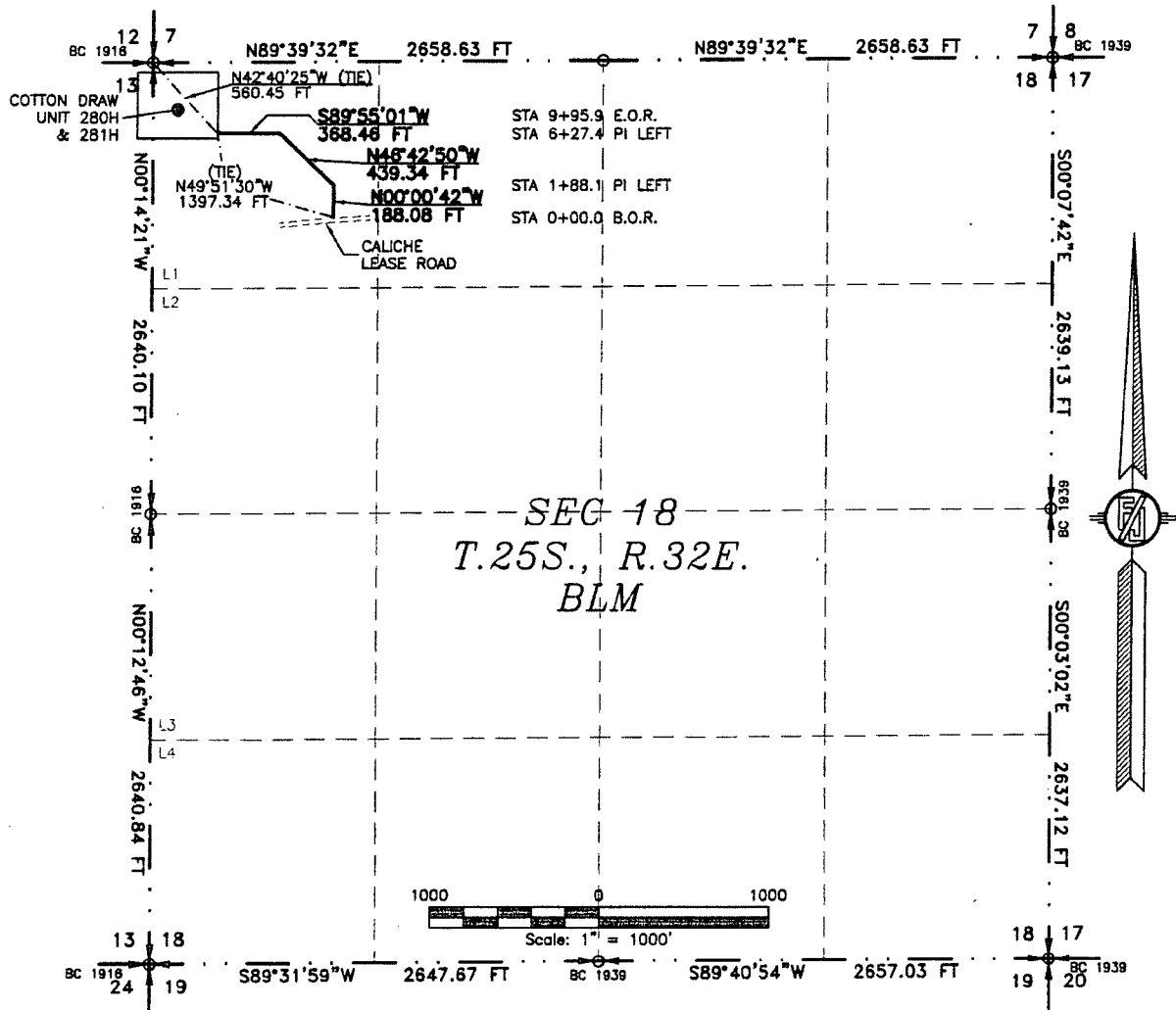
Proposed
Access
Road

385'

ACCESS ROAD PLAT

ACCESS ROAD FROM AN EXISTING CALICHE LEASE ROAD TO COTTON DRAW UNIT 280H & 281H

DEVON ENERGY PRODUCTION COMPANY, L.P.
CENTERLINE SURVEY OF AN ACCESS ROAD CROSSING
SECTION 18, TOWNSHIP 25 SOUTH, RANGE 32 EAST, N.M.P.M.
LEA COUNTY, STATE OF NEW MEXICO
JULY 30, 2015



SEE NEXT SHEET (2-4) FOR DESCRIPTION

SURVEYOR CERTIFICATE

I, FILIMON F. JARAMILLO, A NEW MEXICO PROFESSIONAL SURVEYOR NO. 12797, HEREBY CERTIFY THAT I HAVE CONDUCTED AND AM RESPONSIBLE FOR THIS SURVEY, THAT THIS SURVEY IS TRUE AND CORRECT TO THE BEST OF MY KNOWLEDGE AND BELIEF, AND THAT THIS SURVEY AND PLAT MEET THE MINIMUM STANDARDS FOR LAND SURVEYING IN THE STATE OF NEW MEXICO.

IN WITNESS WHEREOF, THIS CERTIFICATE IS EXECUTED AT CARLSBAD,

NEW MEXICO, THIS 31 DAY OF AUGUST 2015

MADRON SURVEYING, INC.
301 SOUTH CANAL
CARLSBAD, NEW MEXICO 88220
Phone (575) 234-3341

GENERAL NOTES

- 1.) THE INTENT OF THIS ROUTE SURVEY IS TO ACQUIRE AN EASEMENT.
- 2.) BASIS OF BEARING IS NMSP EAST MODIFIED TO SURFACE COORDINATES.

SHEET: 1-4

MADRON SURVEYING, INC. CARLSBAD, NEW MEXICO

SURVEY NO. 4064

ACCESS ROAD PLAT

ACCESS ROAD FROM AN EXISTING CALICHE LEASE ROAD TO COTTON DRAW UNIT 280H & 281H

DEVON ENERGY PRODUCTION COMPANY, L.P.
CENTERLINE SURVEY OF AN ACCESS ROAD CROSSING
SECTION 18, TOWNSHIP 25 SOUTH, RANGE 32 EAST, N.M.P.M.
LEA COUNTY, STATE OF NEW MEXICO
JULY 30, 2015

DESCRIPTION

A STRIP OF LAND 20 FEET WIDE CROSSING BUREAU OF LAND MANAGEMENT LAND IN SECTION 18, TOWNSHIP 25 SOUTH, RANGE 32 EAST, N.M.P.M., LEA COUNTY, STATE OF NEW MEXICO AND BEING 10 FEET EACH SIDE OF THE FOLLOWING DESCRIBED CENTERLINE SURVEY:

BEGINNING AT A POINT WITHIN LOT 1 OF SAID SECTION 18, TOWNSHIP 25 SOUTH, RANGE 32 EAST, N.M.P.M., WHENCE THE NORTHWEST CORNER OF SAID SECTION 18, TOWNSHIP 25 SOUTH, RANGE 32 EAST, N.M.P.M. BEARS N49°51'30"W, A DISTANCE OF 1397.34 FEET;
THENCE N00°00'42"W A DISTANCE OF 188.08 FEET TO AN ANGLE POINT OF THE LINE HEREIN DESCRIBED;
THENCE N46°42'50"W A DISTANCE OF 439.34 FEET TO AN ANGLE POINT OF THE LINE HEREIN DESCRIBED;
THENCE S89°55'01"W A DISTANCE OF 368.46 FEET THE TERMINUS OF THIS CENTERLINE SURVEY, WHENCE THE NORTHWEST CORNER OF SAID SECTION 18, TOWNSHIP 25 SOUTH, RANGE 32 EAST, N.M.P.M. BEARS N42°40'25"W, A DISTANCE OF 560.45 FEET;

SAID STRIP OF LAND BEING 995.89 FEET OR 60.36 RODS IN LENGTH, CONTAINING 0.457 ACRES MORE OR LESS AND BEING ALLOCATED BY FORTIES AS FOLLOWS:

LOT 1 995.89 L.F. 60.36 RODS 0.457 ACRES

SURVEYOR CERTIFICATE

I, FILMON F. JARAMILLO, A NEW MEXICO PROFESSIONAL SURVEYOR NO. 12797, HEREBY CERTIFY THAT I HAVE CONDUCTED AND AM RESPONSIBLE FOR THIS SURVEY, THAT THIS SURVEY IS TRUE AND CORRECT TO THE BEST OF MY KNOWLEDGE AND BELIEF, AND THAT THIS SURVEY AND PLAT MEET THE MINIMUM STANDARDS FOR LAND SURVEYING IN THE STATE OF NEW MEXICO.

IN WITNESS WHEREOF, THIS CERTIFICATE IS EXECUTED AT CARLSBAD,
NEW MEXICO, THIS 5 DAY OF AUGUST 2015

FILMON F. JARAMILLO, PLS. 12797

MADRON SURVEYING, INC.
301 SOUTH CANAL
CARLSBAD, NEW MEXICO 88220
Phone (575) 234-3341

GENERAL NOTES

- 1.) THE INTENT OF THIS ROUTE SURVEY IS TO ACQUIRE AN EASEMENT.
- 2.) BASIS OF BEARING IS NMSP EAST MODIFIED TO SURFACE COORDINATES.

SHEET: 2-4

MADRON SURVEYING, INC. CARLSBAD, NEW MEXICO

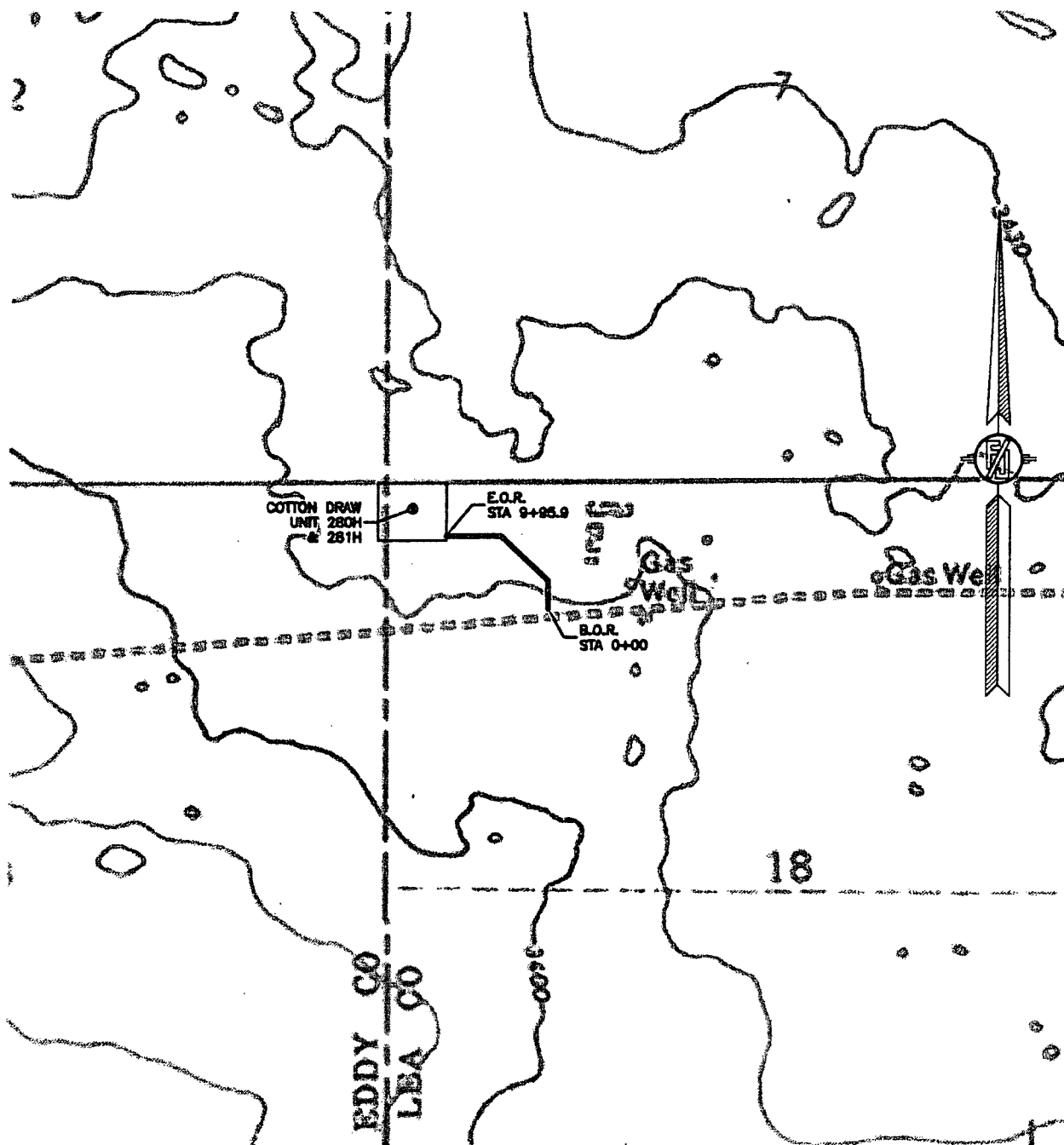
SURVEY NO. 4064

301 SOUTH CANAL
(575) 234-3341

ACCESS ROAD PLAT

ACCESS ROAD FROM AN EXISTING CALICHE LEASE ROAD TO COTTON DRAW UNIT 280H & 281H

DEVON ENERGY PRODUCTION COMPANY, L.P.
CENTERLINE SURVEY OF AN ACCESS ROAD CROSSING
SECTION 18, TOWNSHIP 25 SOUTH, RANGE 32 EAST, N.M.P.M.
LEA COUNTY, STATE OF NEW MEXICO
JULY 30, 2015



SHEET: 3-4

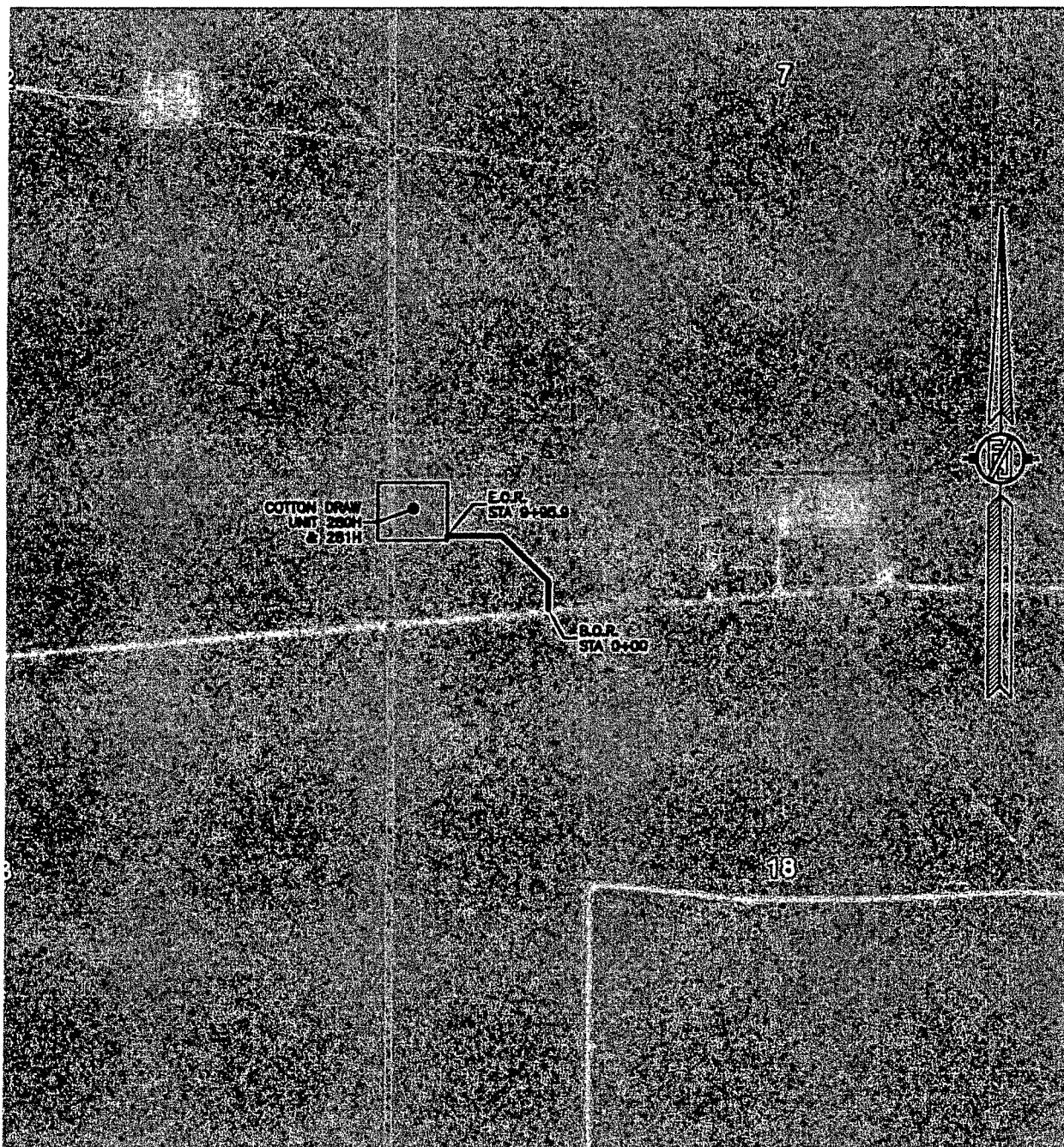
MADRON SURVEYING, INC. 301 SOUTH CANAL (575) 234-3341 CARLSBAD, NEW MEXICO

SURVEY NO. 4064

ACCESS ROAD PLAT

ACCESS ROAD FROM AN EXISTING CALICHE LEASE ROAD TO COTTON DRAW UNIT 280H & 281H

DEVON ENERGY PRODUCTION COMPANY, L.P.
CENTERLINE SURVEY OF AN ACCESS ROAD CROSSING
SECTION 18, TOWNSHIP 25 SOUTH, RANGE 32 EAST, N.M.P.M.
LEA COUNTY, STATE OF NEW MEXICO
JULY 30, 2015



SHEET: 4-4

MADRON SURVEYING, INC. 301 SOUTH CANAL (575) 234-3341 CARLSBAD, NEW MEXICO

SURVEY NO. 4064