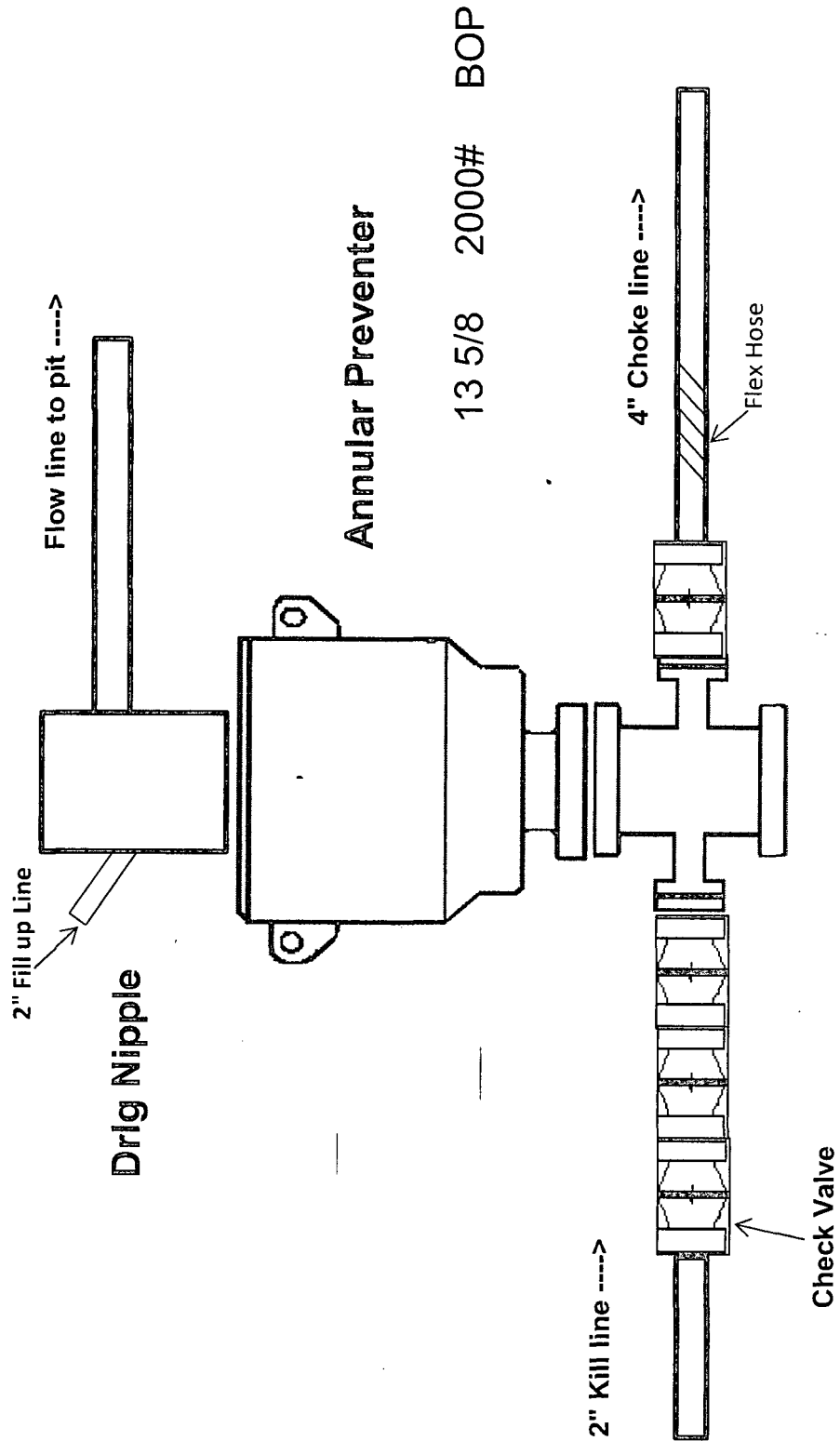


2,000 psi BOP Schematic



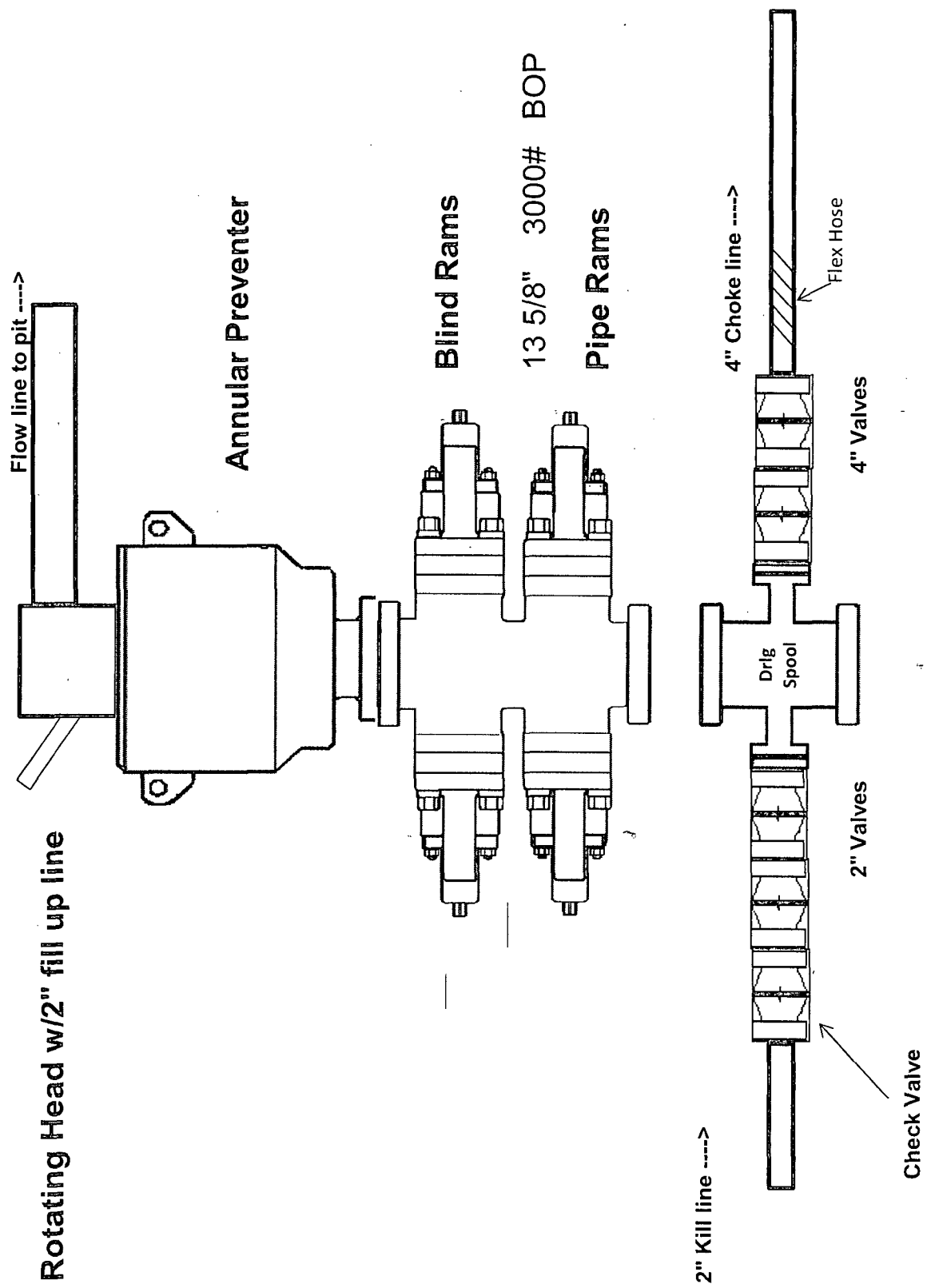
NOV 2015

APR 21 2016

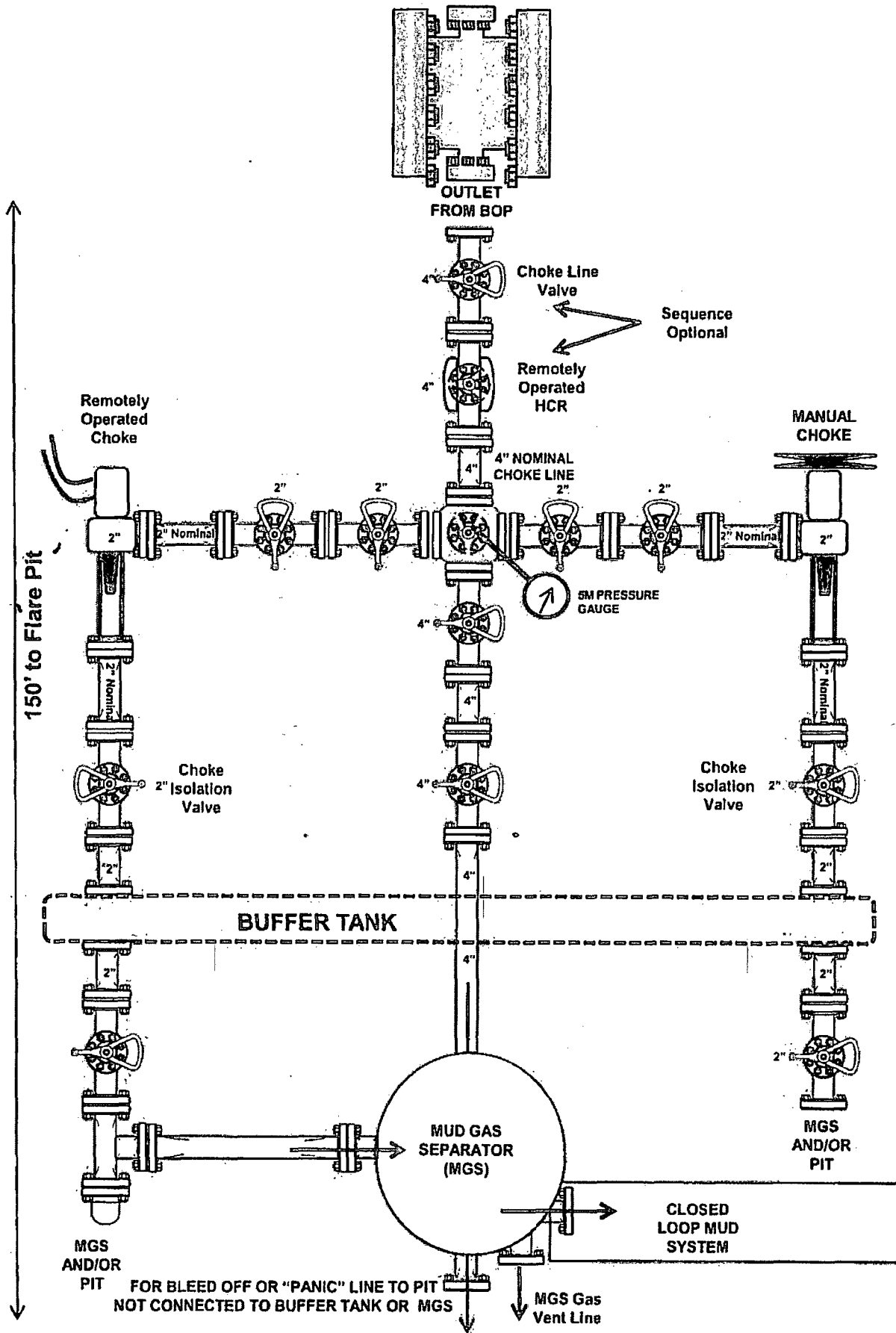
RECEIVED

APR 22 2016

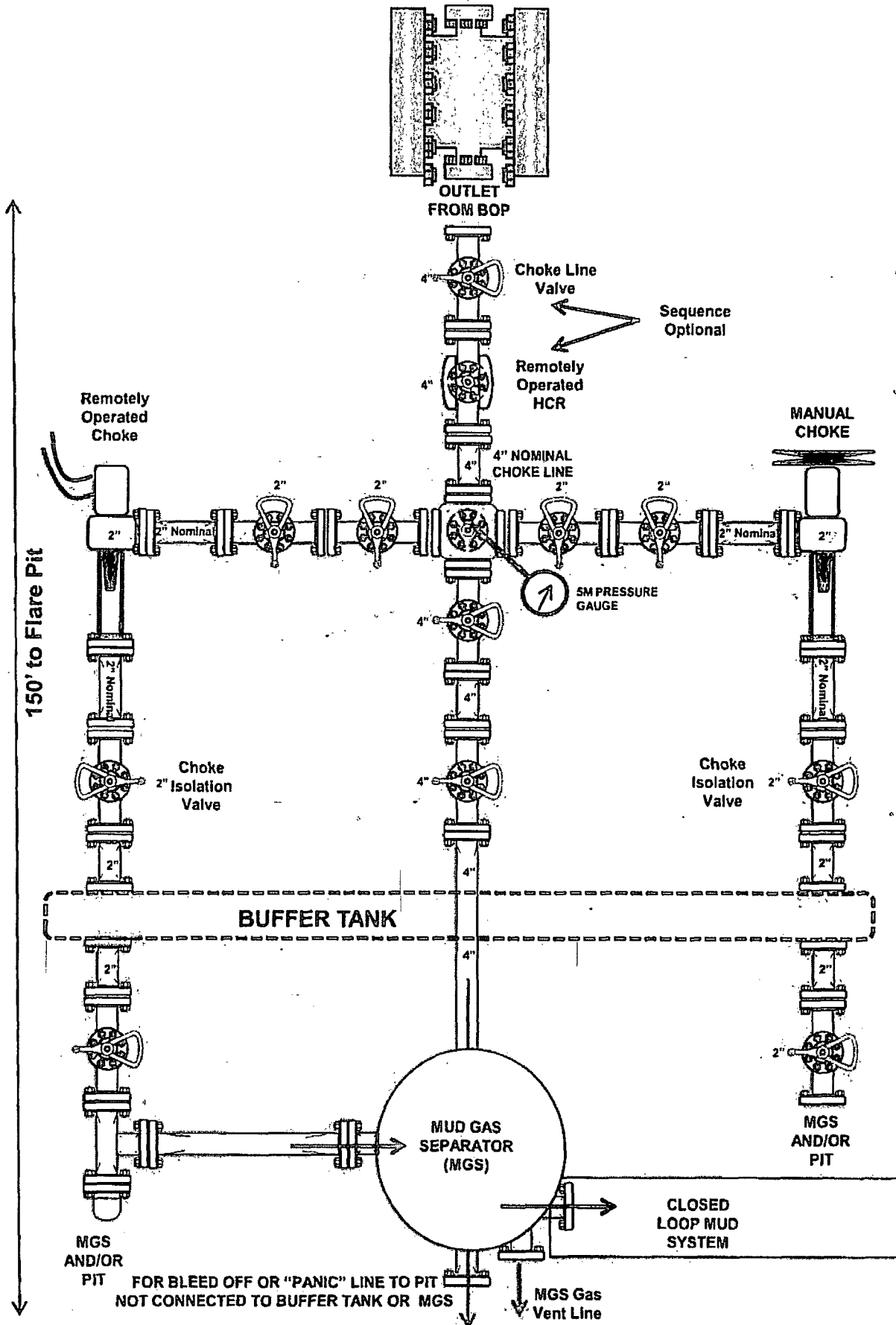
3,000 psi BOP Schematic

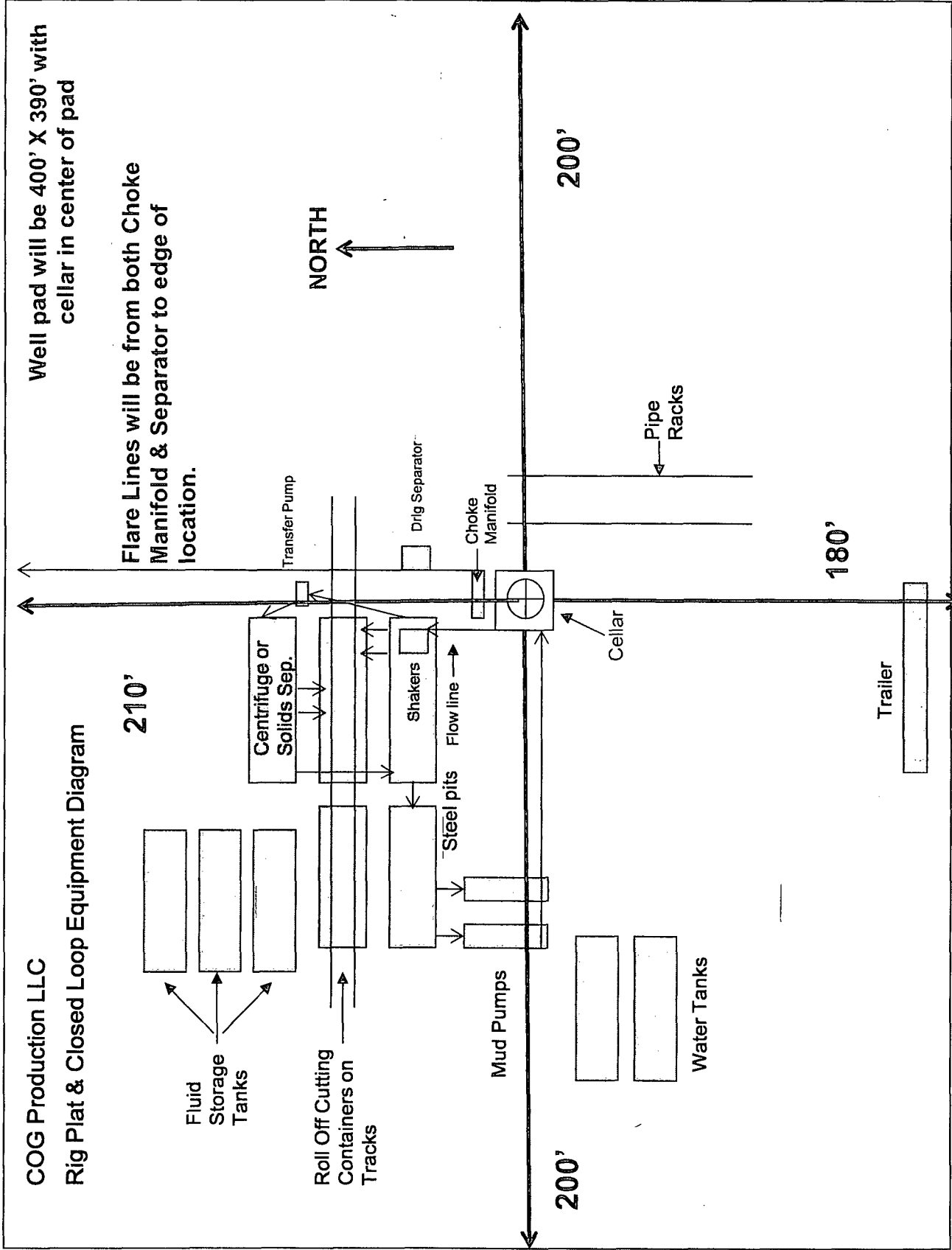


2M Choke Manifold Equipment (WITH MGS + CLOSED LOOP)



3M Choke Manifold Equipment (WITH MGS + CLOSED LOOP)





"I further certify that COG will comply with Rule 19.15.17 NMAC by using a Closed Loop System."

COG Production LLC
H₂S Equipment Schematic
Terrain: Shinnery sand hills.

Well pad will be 400' X 390'
with cellar in center of pad

