

District I
1625 N. French Blvd., Hobbs, NM 88240
Phone: (575) 393-6161 Fax: (575) 393-0720
District II
811 S. First St., Artesia, NM 88200
Phone: (575) 748-1283 Fax: (575) 748-9720
District III
1000 Rio Brazos Road, Aztec, NM 87410
Phone: (505) 334-6176 Fax: (505) 334-1700
District IV
1220 S. St. Francis Dr., Santa Fe, NM 87505
Phone: (505) 476-3460 Fax: (505) 476-3462

HOBBS OCD

State of New Mexico
Energy, Minerals & Natural Resources Department
OIL CONSERVATION DIVISION
1220 South St. Francis Dr.
Santa Fe, NM 87505

Form C-102
Revised August 1, 2011
Submit one copy to appropriate
District Office

☐ AMENDED REPORT

WELL LOCATION AND ACREAGE DEDICATION PLAT

¹ API Number 30-025-4372	² Pool Code 22900	³ Pool Name Eunice; Bli-Tu- Dr, North
⁴ Property Code 37346	⁵ Property Name WEST BLINEBRY DRINKARD UNIT	
⁷ OGRID No. 873	⁸ Operator Name APACHE CORPORATION	⁶ Well Number #220
		⁹ Elevation 3470.993 3471

¹⁰ Surface Location

UL or lot no.	Section	Township	Range	Lot Idn	Feet from the	North/South line	Feet from the	East/West line	County
I	9	21 S	37 E		1,370	SOUTH	850	EAST	LEA

¹¹ Bottom Hole Location If Different From Surface

UL or lot no.	Section	Township	Range	Lot Idn	Feet from the	North/South line	Feet from the	East/West line	County

¹² Dedicated Acres 40	¹³ Joint or Infill	¹⁴ Consolidation Code	¹⁵ Order No.
--------------------------------------------	-------------------------------	----------------------------------	-------------------------

No allowable will be assigned to this completion until all interests have been consolidated or a non-standard unit has been approved by the division.

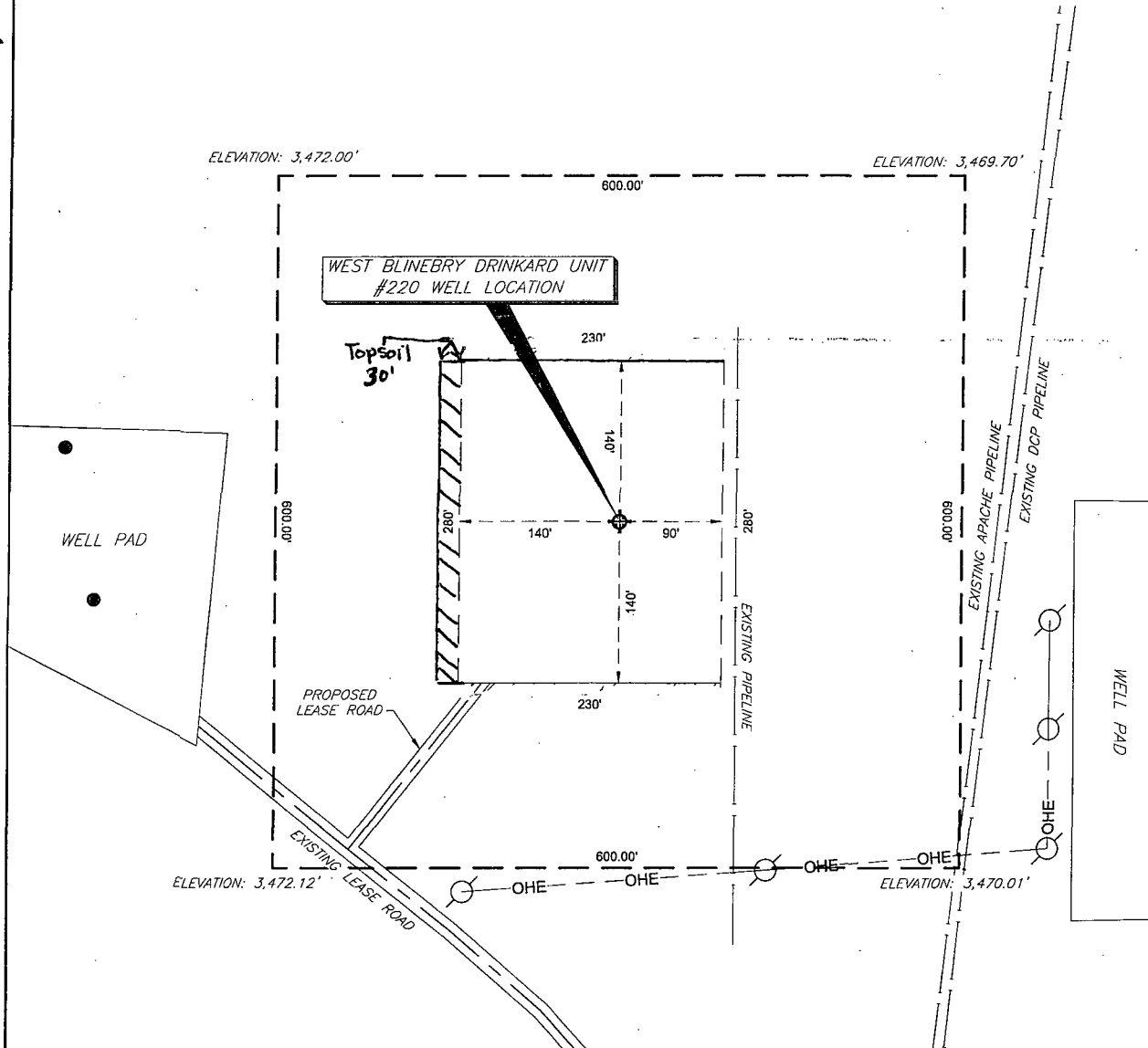
SECTION 9, TOWNSHIP 21 SOUTH, RANGE 37 EAST P.M.

<p>FOUND 3 INCH IRON PIPE, MARKED "U.S. GENERAL LAND OFFICE"</p> <p>LAT: 32.500425 N LON: -103.175938 W NMSPC E: 547704.157 NMSPC E: 856835.088 (N.A.D. 27)</p> <p>LAT: 32.500547 N LON: -103.176407 W NMSPC E: 547764.692 NMSPC E: 898019.092 (N.A.D. 83)</p>	<p>FOUND 3 INCH IRON PIPE, MARKED "U.S. GENERAL LAND OFFICE"</p> <p>LAT: 32.500407 N LON: -103.158794 W NMSPC E: 547755.306 NMSPC E: 862120.424 (N.A.D. 27)</p> <p>LAT: 32.500528 N LON: -103.159265 W NMSPC E: 547815.516 NMSPC E: 903304.383 (N.A.D. 83)</p>	<p>17 OPERATOR CERTIFICATION</p> <p>I hereby certify that the information contained herein is true and complete to the best of my knowledge and belief, and that this organization either owns a working interest or unleased mineral interest in the land including the proposed bottom hole location or has a right to drill this well at this location pursuant to a contract with an owner of such a mineral or working interest, or to a voluntary pooling agreement or a compulsory pooling order heretofore entered by the division.</p> <p><i>Sorina L. Flores</i> 12/3/14 Signature Date</p> <p>Sorina L. Flores Printed Name</p> <p><i>Sorina.Flores@apachecorp.com</i> E-mail Address</p>
<p>18 SURVEYOR CERTIFICATION</p> <p>I hereby certify that the well location shown on this plat was plotted from field notes of actual surveys made by me or under my supervision, and that the same is true and correct to the best of my belief.</p> <p>4-30-2014 Date of Survey</p> <p>Signature and Seal of Professional Surveyor</p> <p><i>Jeffrey E. Hudson</i> Jeffrey E. Hudson Professional Surveyor 20559</p> <p>Certificate Number 20559</p>		<p>19 SURFACE LOCATION</p> <p>DD LAT: 32.489656 N DD LON: -103.161552 W DMS LAT: 32°29'22.765" N DMS LON: 103°9'41.591" W NMSPC E: 543834.875 NMSPC E: 861312.821 (N.A.D. 27)</p> <p>DD LAT: 32.489778 N DD LON: -103.162024 W DMS LAT: 32°29'23.199" N DMS LON: 103°09'43.285" W NMSPC E: 543895.060 NMSPC E: 902496.895 (N.A.D. 83)</p> <p>FOUND 5/8 INCH IRON ROD, CAPPED "WEST ENGINEERING"</p> <p>LAT: 32.485888 N LON: -103.158797 W NMSPC E: 542473.371 NMSPC E: 862177.445 (N.A.D. 27)</p> <p>LAT: 32.486010 N LON: -103.159268 W NMSPC E: 542533.476 NMSPC E: 903361.590 (N.A.D. 83)</p>

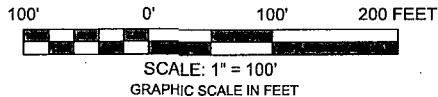
APR 25 2016

LEA COUNTY, NEW MEXICO

SECTION NINE (9), TOWNSHIP TWENTY-ONE (21) SOUTH,
RANGE THIRTY-SEVEN (37) EAST OF THE PRINCIPAL MERIDIAN



COORDINATE TABLE				
WELL NAME	NORTHING (N.A.D. 27)	EASTING (N.A.D. 27)	NORTHING (N.A.D. 83)	EASTING (N.A.D. 83)
WBDU #220 SURFACE LOCATION & PENETRATION POINT	543834.875	861312.821	543895.060	902496.895
ELEVATION	LATITUDE (N.A.D. 27)	LONGITUDE (N.A.D. 27)	LATITUDE (N.A.D. 83)	LONGITUDE (N.A.D. 83)
3,470.993'	32.489556 N	-103.161552 W	32.489778 N	-103.162024 W



PREPARED FROM SURVEY
DATED: AUGUST 1, 2014

NOTES:

1.) BEARINGS & COORDINATES SHOWN HEREON ARE REFERENCED TO THE NEW MEXICO STATE PLANE COORDINATE SYSTEM, N.A.D. 27 & 83 DATUM (NEW MEXICO EAST ZONE) DERIVED FROM GPS OBSERVATIONS AND ARE BASED REFERENCE STATIONS - "E 148" - MALJAWAR NE (1985)

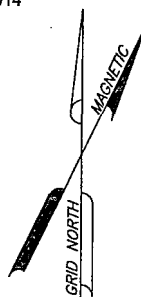
2.) LATITUDE & LONGITUDE ARE NAD 83 & 27 GEOGRAPHIC.

3.) THIS IS AN WELL PLAT AND DOES NOT REPRESENT A TRUE BOUNDARY SURVEY. THIS SURVEY IS BASED ON OWNERSHIP AND EASEMENT INFORMATION PROVIDED BY APACHE CORPORATION. SURVEYOR DID NOT ABSTRACT SUBJECT TRACT AND THERE MAY BE EASEMENTS OR OTHER ENCUMBRANCES THAT AFFECT THE SUBJECT TRACT THAT ARE NOT SHOWN HEREON.



**TRANSGLOBAL
SERVICES LLC**

8205 Camp Bowie West, Suite 204
Fort Worth, Texas 76116
(817) 386-0362 ~ Fax (882) 224-3377



THE WEST BLINEBRY DRINKARD UNIT #220 IS LOCATED
APPROXIMATELY 4 MILES NORTH-NORTHWEST OF
EUNICE, NEW MEXICO

Apache

Location of

WEST BLINEBRY DRINKARD UNIT #220

Surface Location & Penetration Point: 1370' FSL & 850' FEL

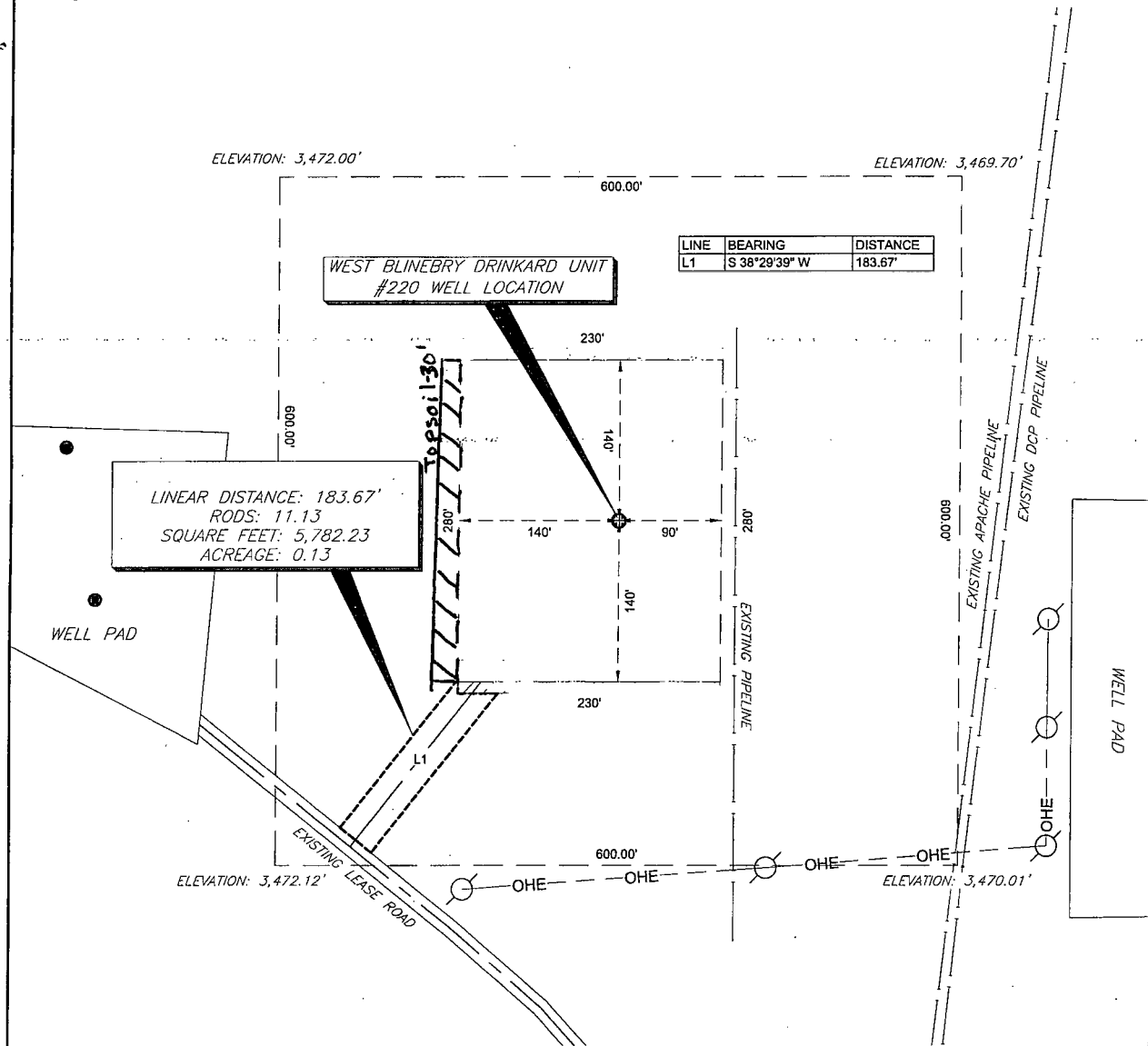
Section 9, Township 21 South, Range 37 East of P.M.

Lea County, New Mexico

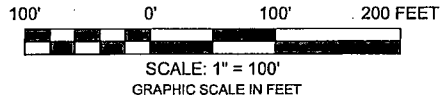
DRAWN BY: P.R.W.	DATE: 8-04-14	DWG. NO.	REV.
CHECKED BY:	DATE:	WBDU #220 WELL LOCATION	0
SCALE: 1" = 100'	APP.:	PAGE 1 OF 1	

LEA COUNTY, NEW MEXICO

SECTION NINE (9), TOWNSHIP TWENTY-ONE (21) SOUTH,
RANGE THIRTY-SEVEN (37) EAST OF THE PRINCIPAL MERIDIAN



COORDINATE TABLE				
WELL NAME	NORTHING (N.A.D. 27)	EASTING (N.A.D. 27)	NORTHING (N.A.D. 83)	EASTING (N.A.D. 83)
WBDU #220 SURFACE LOCATION & PENETRATION POINT	543834.875	861312.821	543895.060	902496.895
ELEVATION	LATITUDE (N.A.D. 27)	LONGITUDE (N.A.D. 27)	LATITUDE (N.A.D. 83)	LONGITUDE (N.A.D. 83)
3,470.993'	32.489656 N	-103.161552 W	32.489778 N	-103.162024 W



PREPARED FROM SURVEY
DATED: AUGUST 1, 2014

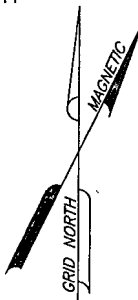
NOTES:

- 1.) BEARINGS & COORDINATES SHOWN HEREON ARE REFERENCED TO THE NEW MEXICO STATE PLANE COORDINATE SYSTEM, N.A.D. 27 & 83 DATUM (NEW MEXICO EAST ZONE) DERIVED FROM GPS OBSERVATIONS AND ARE BASED REFERENCE STATIONS - "E 146" - MALAMAR NE (1985)
- 2.) LATITUDE & LONGITUDE ARE NAD 83 & 27 GEOGRAPHIC.
- 3.) THIS IS AN WELL PLAT AND DOES NOT REPRESENT A TRUE BOUNDARY SURVEY. THIS SURVEY IS BASED ON OWNERSHIP AND EASEMENT INFORMATION PROVIDED BY APACHE CORPORATION. SURVEYOR DID NOT ABSTRACT SUBJECT TRACT AND THERE MAY BE EASEMENTS OR OTHER ENCUMBRANCES THAT AFFECT THE SUBJECT TRACT THAT ARE NOT SHOWN HEREON.



**TRANSGLOBAL
SERVICES LLC**

8205 Camp Bowie West, Suite 204
Fort Worth, Texas 76116
(817) 386-0362 ~ Fax (882) 224-3377



THE WEST BLINEBRY DRINKARD UNIT #220 IS LOCATED
APPROXIMATELY 4 MILES NORTH-NORTHWEST OF
EUNICE, NEW MEXICO

Apache

Location of

WEST BLINEBRY DRINKARD UNIT #220

Surface Location & Penetration Point: 1370' FSL & 850' FEL

Section 9, Township 21 South, Range 37 East of P.M.

Lea County, New Mexico

DRAWN BY: P.R.W.	DATE: 8-04-14	DWG. NO.	REV.
CHECKED BY:	DATE:	WBDU #220 WELL LOCATION	0
SCALE: 1" = 100'	APP:	PAGE 1 OF 1	

LEA COUNTY, NEW MEXICO

SECTION NINE (9), TOWNSHIP TWENTY-ONE (21) SOUTH,
RANGE THIRTY-SEVEN (37) EAST OF THE PRINCIPAL MERIDIAN

Exhibit #1

LINE	BEARING	DISTANCE
L1	S 09°24'58" W	164.35'

WEST BLINEBRY DRINKARD UNIT
#220 WELL LOCATION

POINT OF BEGINNING
NORTHING: 543736.427
EASTING: 902388.471

PROPOSED ELECTRIC LINE
TOTAL DISTANCE: 164.35'
RODS: 9.96

POINT OF TERMINATION
NORTHING: 543574.287
EASTING: 902361.582

COORDINATE TABLE				
WELL NAME	NORTHING (N.A.D. 27)	EASTING (N.A.D. 27)	NORTHING (N.A.D. 83)	EASTING (N.A.D. 83)
WBDRU #220 SURFACE LOCATION & PENETRATION POINT	543834.875	861312.821	543895.060	902496.895
ELEVATION	LATITUDE (N.A.D. 27)	LONGITUDE (N.A.D. 27)	LATITUDE (N.A.D. 83)	LONGITUDE (N.A.D. 83)
3,470.993'	32.489656 N	-103.161552 W	32.489778 N	-103.162024 W

100' 0' 100' 200 FEET



SCALE: 1" = 100'
GRAPHIC SCALE IN FEET

PREPARED FROM SURVEY
DATED: AUGUST 1, 2014

NOTES:

1.) BEARINGS & COORDINATES SHOWN HEREON ARE REFERENCED TO THE NEW MEXICO STATE PLANE COORDINATE SYSTEM, N.A.D. 27 & 83 DATUM (NEW MEXICO EAST ZONE) DERIVED FROM GPS OBSERVATIONS AND ARE BASED REFERENCE STATIONS - "E 148" - MALJAMAR NE (1985)

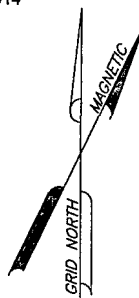
2.) LATITUDE & LONGITUDE ARE NAD 83 & 27 GEOGRAPHIC.

3.) THIS IS AN WELL PLAT AND DOES NOT REPRESENT A TRUE BOUNDARY SURVEY. THIS SURVEY IS BASED ON OWNERSHIP AND EASEMENT INFORMATION PROVIDED BY APACHE CORPORATION. SURVEYOR DID NOT ABSTRACT SUBJECT TRACT AND THERE MAY BE EASEMENTS OR OTHER ENCUMBRANCES THAT AFFECT THE SUBJECT TRACT THAT ARE NOT SHOWN HEREON.



**TRANSGLOBAL
SERVICES LLC**

8205 Camp Bowie West, Suite 204
Fort Worth, Texas 76116
(817) 386-0362 ~ Fax (882) 224-3377



THE WEST BLINEBRY DRINKARD UNIT #220 IS LOCATED
APPROXIMATELY 4 MILES NORTH-NORTHWEST OF
EUNICE, NEW MEXICO

Apache

Location of

PROPOSED ELECTRICAL LINE

Section 9, Township 21 South, Range 37 East of P.M.

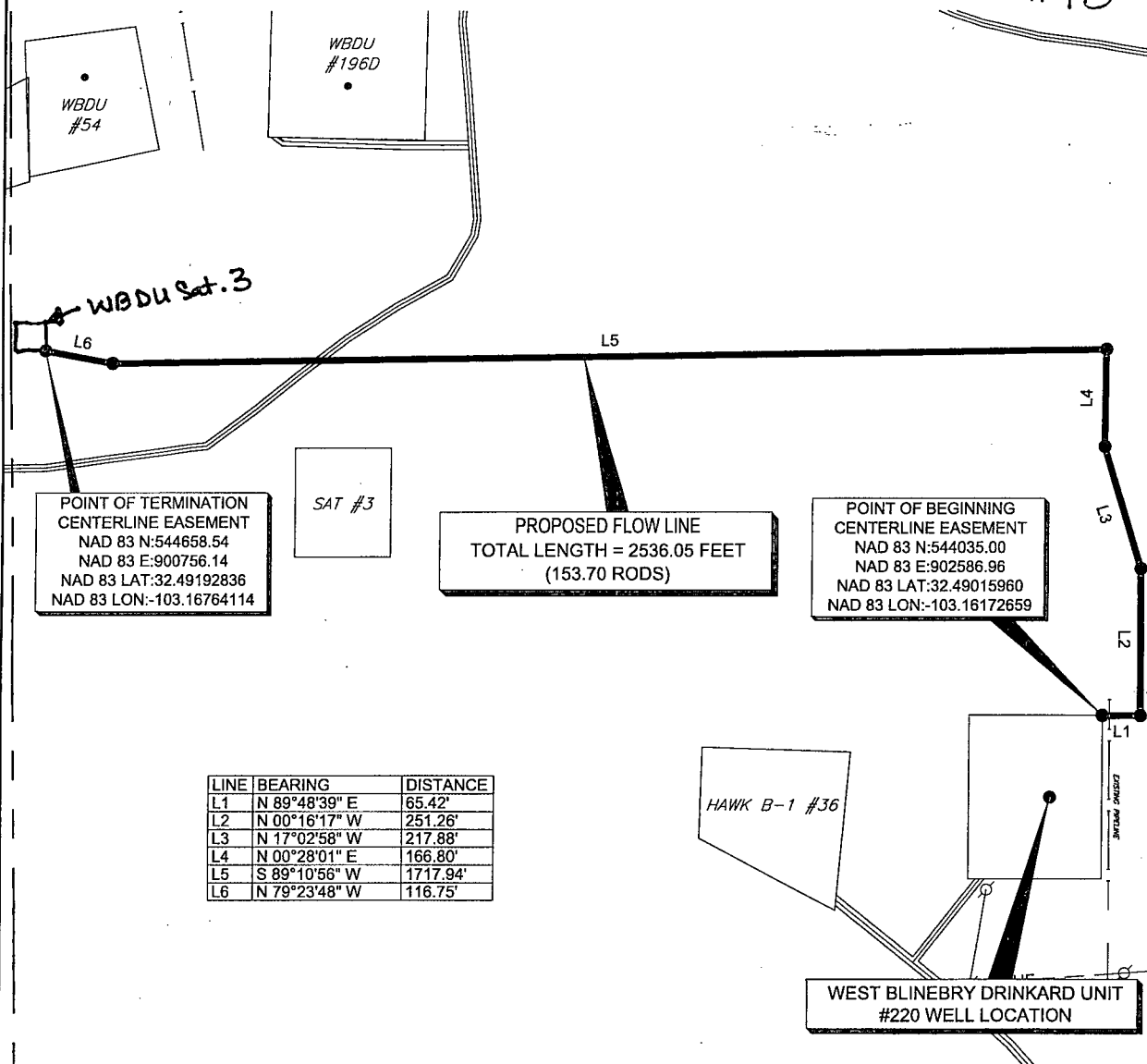
Lea County, New Mexico

DRAWN BY: P.R.W.	DATE: 8-04-14	DWG. NO.	REV.
CHECKED BY:	DATE:	WBDRU #220 WELL LOCATION	0
SCALE: 1" = 100'	APP:	PAGE 1 OF 1	

LEA COUNTY, NEW MEXICO

SECTION NINE (9), TOWNSHIP TWENTY-ONE (21) SOUTH,
RANGE THIRTY-SEVEN (37) EAST OF THE PRINCIPAL MERIDIAN

EXHIBIT
#1B



COORDINATE TABLE				
WELL NAME	NORTHING (N.A.D. 27)	EASTING (N.A.D. 27)	NORTHING (N.A.D. 83)	EASTING (N.A.D. 83)
WBDU #220 SURFACE LOCATION & PENETRATION POINT	543834.875	861312.821	543895.060	902496.895
ELEVATION	LATITUDE (N.A.D. 27)	LONGITUDE (N.A.D. 27)	LATITUDE (N.A.D. 83)	LONGITUDE (N.A.D. 83)
3,470.993'	32.489656 N	-103.161552 W	32.489778 N	-103.162024 W



SCALE: 1" = 200'
GRAPHIC SCALE IN FEET

PREPARED FROM SURVEY
DATED: FEBRUARY 12, 2015

NOTES:

1.) BEARINGS & COORDINATES SHOWN HEREON ARE REFERENCED TO THE NEW MEXICO STATE PLANE COORDINATE SYSTEM, N.A.D. 27 & 83 DATUM (NEW MEXICO EAST ZONE) DERIVED FROM GPS OBSERVATIONS AND ARE BASED REFERENCE STATIONS - "E 146" - MALJAMAR NE (1985)

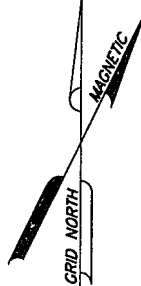
2.) LATITUDE & LONGITUDE ARE NAD 83 & 27 GEOGRAPHIC.

3.) THIS IS AN WELL PLAT AND DOES NOT REPRESENT A TRUE BOUNDARY SURVEY. THIS SURVEY IS BASED ON OWNERSHIP AND EASEMENT INFORMATION PROVIDED BY APACHE CORPORATION. SURVEYOR DID NOT ABSTRACT SUBJECT TRACT AND THERE MAY BE EASEMENTS OR OTHER ENCUMBRANCES THAT AFFECT THE SUBJECT TRACT THAT ARE NOT SHOWN HEREON.



TRANSGLOBAL
SERVICES LLC

8205 Camp Bowie West, Suite 204
Fort Worth, Texas 76116
(817) 388-0362 ~ Fax (882) 224-3377



THE WEST BLINEBRY DRINKARD UNIT #220 IS LOCATED
APPROXIMATELY 4 MILES NORTH-NORTHWEST OF
EUNICE, NEW MEXICO

Apache

Location of

PROPOSED FLOW LINE
WEST BLINEBRY DRINKARD UNIT #220

Section 9, Township 21 South, Range 37 East of P.M.

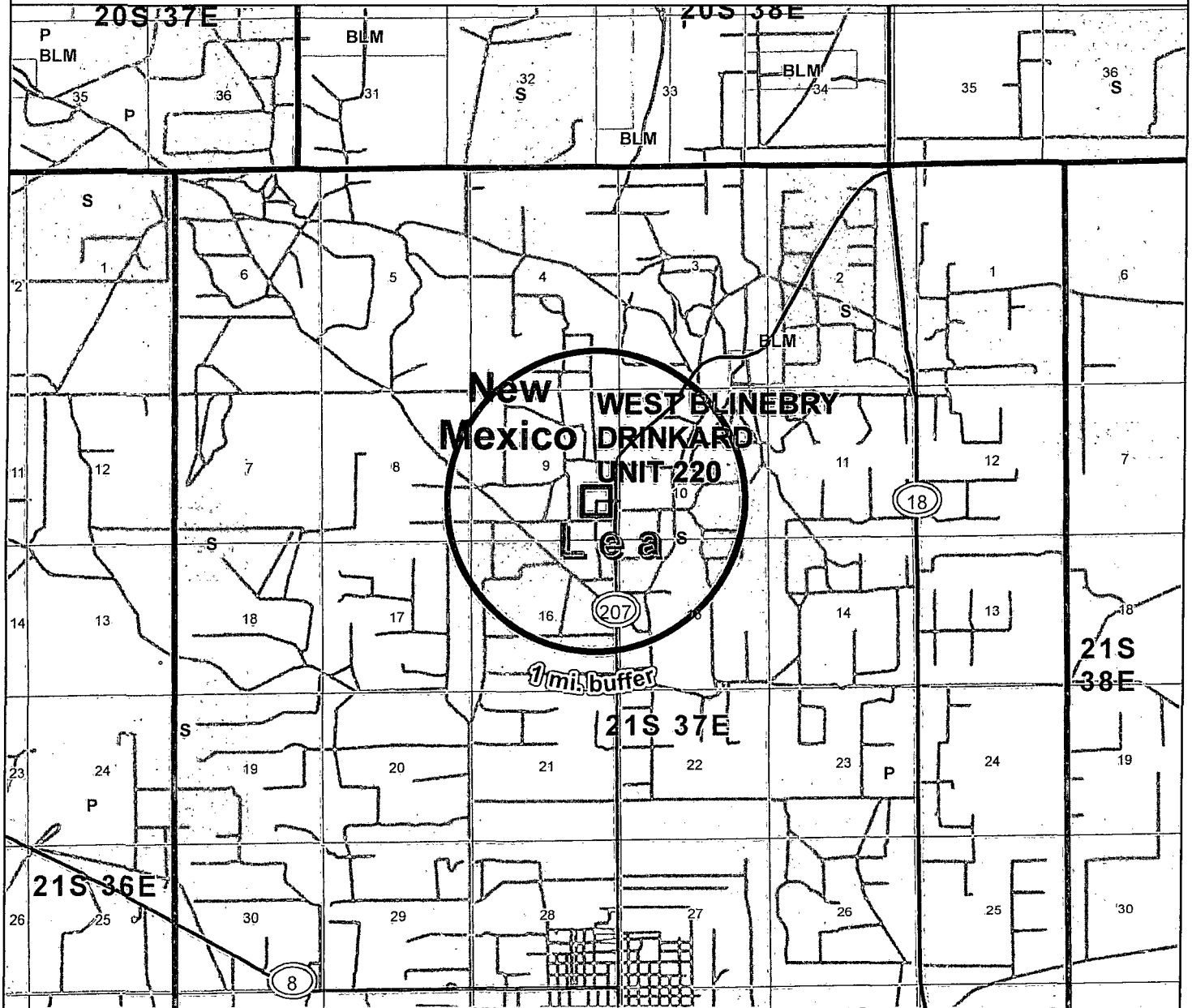
Lea County, New Mexico

DRAWN BY: P.R.W.	DATE: 8-04-14	DWG. NO.	REV.
CHECKED BY:	DATE:	WBDU #220 WELL LOCATION	0
SCALE: 1" = 100'	APP:	PAGE 1 OF 1	

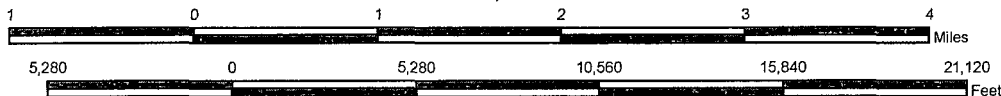
Sheet
1 of 1



WEST BLINEBRY DRINKARD UNIT 220
1370' FSL, 850' FEL
SEC 9, T21S R37E
LEA, NM

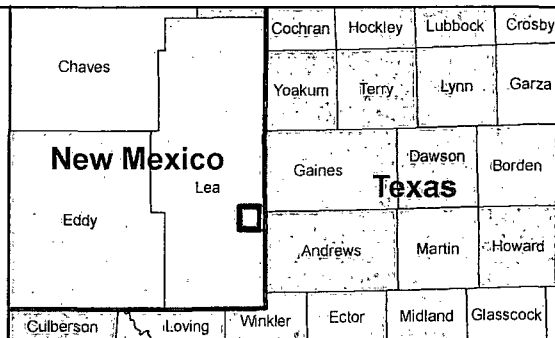


1 inch = 5,280 feet



Legend

- | | |
|----------------------|-----------------------|
| Apache Well | Permit |
| Bottom Hole Location | Gas |
| 1 mi. buffer | Oil |
| BLM | Injection Well |
| Private | Plugged and Abandoned |
| State | Plugged |
| Horizontals | Shut-in Gas |
| | Shut-in Oil |
| | Temporarily Abandoned |



NAD 1927 StatePlane
New Mexico East FIPS 3001
Projection: Transverse Mercator
False Easting: 500000.000000
False Northing: 0.000000
Central Meridian: -104.333333
Scale Factor: 0.999909
Latitude Of Origin: 31.000000
Linear Unit: Foot US

GCS North American 1927
Datum: D North American 1927

Drawn By: Nicholas Tallant

Checked by:

Date: 8/1/2014

Sheet
1 of 1

EXHIBIT #2

1370' FSL & 850' FEL

SEC: 9 T21S R37E

1 MILE RADIUS



POSTED WELL DATA

Well Name
Well Number

WELL SYMBOLS

- | WELL SYMBOLS | |
|--------------|----------------------------|
| | Abandoned Oil and Gas Well |
| | Dry Hole, With Show of Gas |
| | Dry Hole, With Show of Oil |
| | Dry Hole |
| | Gas Well |
| | Active Injection |
| | Key Injection well |
| | Location |
| | New Location |
| | Oil & Gas Well |
| | Oil Well |
| | P&A'd Gas Well |
| | Active Gas Producer |
| | Plugged and Abandoned |
| | Active Producer |
| | PERMIT |
| | Pilot Hole |
| | P&A Oil |

December 3, 2014

