

HOBBS OCD

APR 25 2016

District I
1625 N. French Dr., Hobbs, NM 88240
Phone: (575) 393-6161 Fax: (575) 393-0720
District II
811 S. First St., Artesia, NM 88210
Phone: (575) 743-1283 Fax: (575) 748-9720
District III
1000 Rio Brazos Road, Aztec, NM 87410
Phone: (505) 334-6178 Fax: (505) 334-6170
District IV
1220 S. St. Francis Dr., Santa Fe, NM 87505
Phone: (505) 476-3460 Fax: (505) 476-3462

State of New Mexico
Energy, Minerals & Natural Resources Department
OIL CONSERVATION DIVISION

1220 South St. Francis Dr.
Santa Fe, NM 87505

Form C-102
Revised August 1, 2011
Submit one copy to appropriate
District Office

☐ AMENDED REPORT

WELL LOCATION AND ACREAGE DEDICATION PLAT

¹ API Number 30-025-43182	² Pool Code 39250	³ Pool Name SAN ANTONIO
⁴ Property Code 313306	⁵ Property Name BOUNDARY RAIDER 6 FEDERAL	⁶ Well Number 1H
⁷ OGRID No. 6137	⁸ Operator Name DEVON ENERGY PRODUCTION COMPANY, L.P.	⁹ Elevation 3534.1

¹⁰ Surface Location

UL or lot no.	Section	Township	Range	Lot Idn	Feet from the	North/South line	Feet from the	East/West line	County
B	7	23 S	32 E		200	NORTH	1650	EAST	LEA

¹¹ Bottom Hole Location If Different From Surface

UL or lot no.	Section	Township	Range	Lot Idn	Feet from the	North/South line	Feet from the	East/West line	County
2/B	6	23 S	32 E		330	NORTH	1980	EAST	LEA

¹² Dedicated Acres 159.71 ac	¹³ Joint or Infill	¹⁴ Consolidation Code	¹⁵ Order No.
---	-------------------------------	----------------------------------	-------------------------

No allowable will be assigned to this completion until all interests have been consolidated or a non-standard unit has been approved by the division.

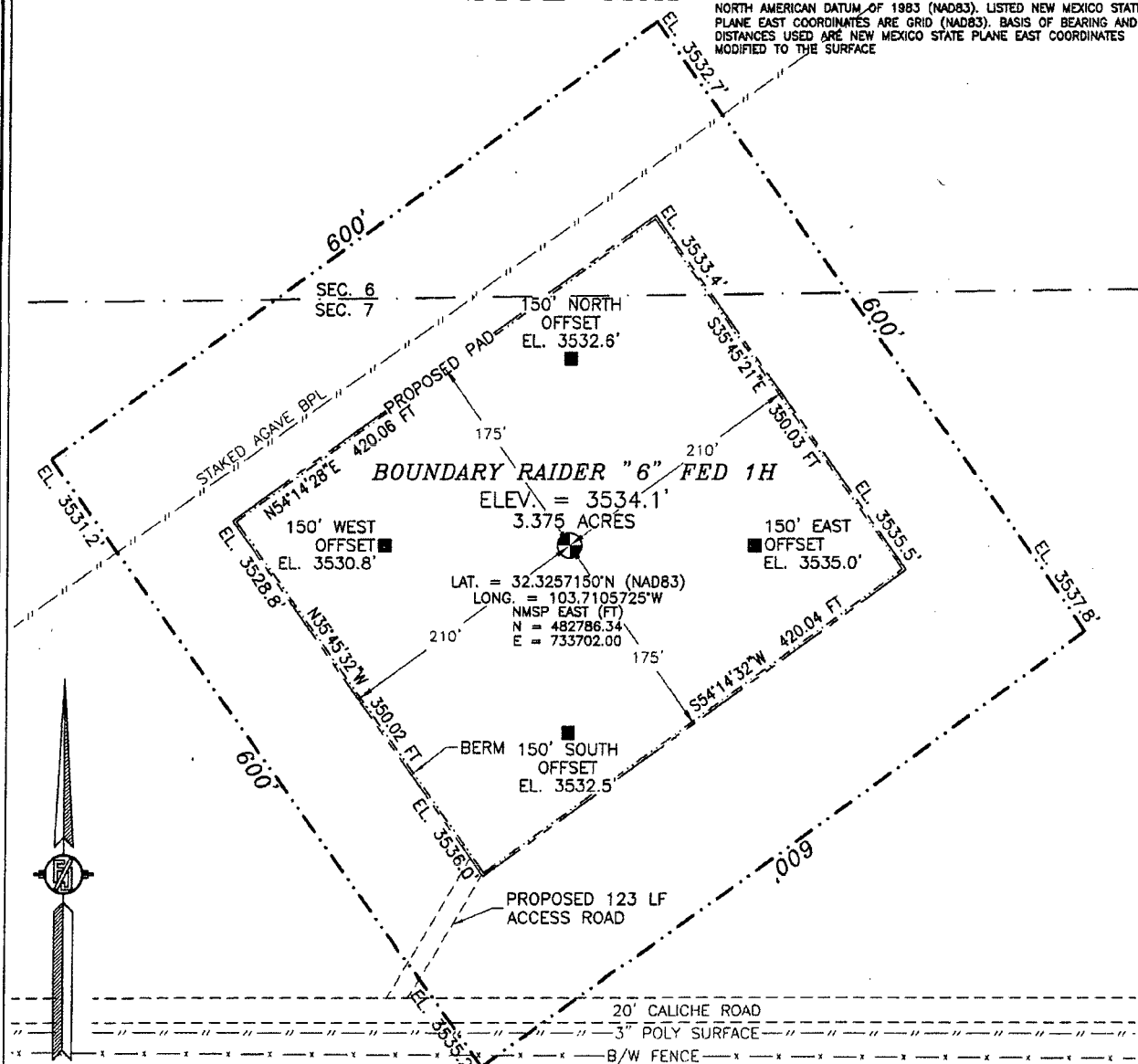
<p>17 OPERATOR CERTIFICATION I hereby certify that the information contained herein is true and complete to the best of my knowledge and belief, and that this organization either owns a working interest or unleased mineral interest in the land including the proposed bottom hole location or has a right to drill this well at this location pursuant to a contract with an owner of such a mineral or working interest, or to a voluntary pooling agreement or a compulsory pooling order heretofore entered by the division.</p> <p>Signature: <i>Trina C. Couch</i> Date: <i>4/25/14</i> Trina C. Couch, Regulatory Analyst Printed Name trina.couch@dmn.com E-mail Address</p>	
<p>18 SURVEYOR CERTIFICATION I hereby certify that the well location shown on this plat was plotted from field notes of actual surveys made by me or under my supervision, and that the same is true and correct to the best of my belief.</p> <p>NOVEMBER 19, 2014 Date of Survey: <i>11/19/14</i> Signature and Seal of Professional Surveyor: <i>[Signature]</i> Certificate Number: <i>ELIJA L. J. JARAMILLO, PLS 12797</i> SURVEY NO. 1716A</p>	

APR 25 2016

SECTION 7, TOWNSHIP 23 SOUTH, RANGE 32 EAST, N.M.P.M.
LEA COUNTY, STATE OF NEW MEXICO

SITE MAP

NOTE: LATITUDE AND LONGITUDE COORDINATES ARE SHOWN USING THE NORTH AMERICAN DATUM OF 1983 (NAD83). LISTED NEW MEXICO STATE PLANE EAST COORDINATES ARE GRID (NAD83). BASIS OF BEARING AND DISTANCES USED ARE NEW MEXICO STATE PLANE EAST COORDINATES MODIFIED TO THE SURFACE



012 60 120 240

SCALE 1" = 120'

DIRECTIONS TO LOCATION

FROM THE INTERSECTION OF STATE HIGHWAY 128 (JAL HIGHWAY) AND CR 798 (RED ROAD) GO NORTH ON CR 798 3.0 MILES JUST PAST A CATTLE GUARD, TURN RIGHT (EAST) ON A CALICHE LEASE ROAD GO 1.7 MILES, GO NORTHEAST 123' TO THE SOUTHWEST CORNER FOR THIS LOCATION.

DEVON ENERGY PRODUCTION COMPANY, L.P.

BOUNDARY RAIDER "6" FED 1H

LOCATED 200 FT. FROM THE NORTH LINE
AND 1650 FT. FROM THE EAST LINE OF

SECTION 7, TOWNSHIP 23 SOUTH,
RANGE 32 EAST, N.M.P.M.

LEA COUNTY, STATE OF NEW MEXICO

NOVEMBER 19, 2014

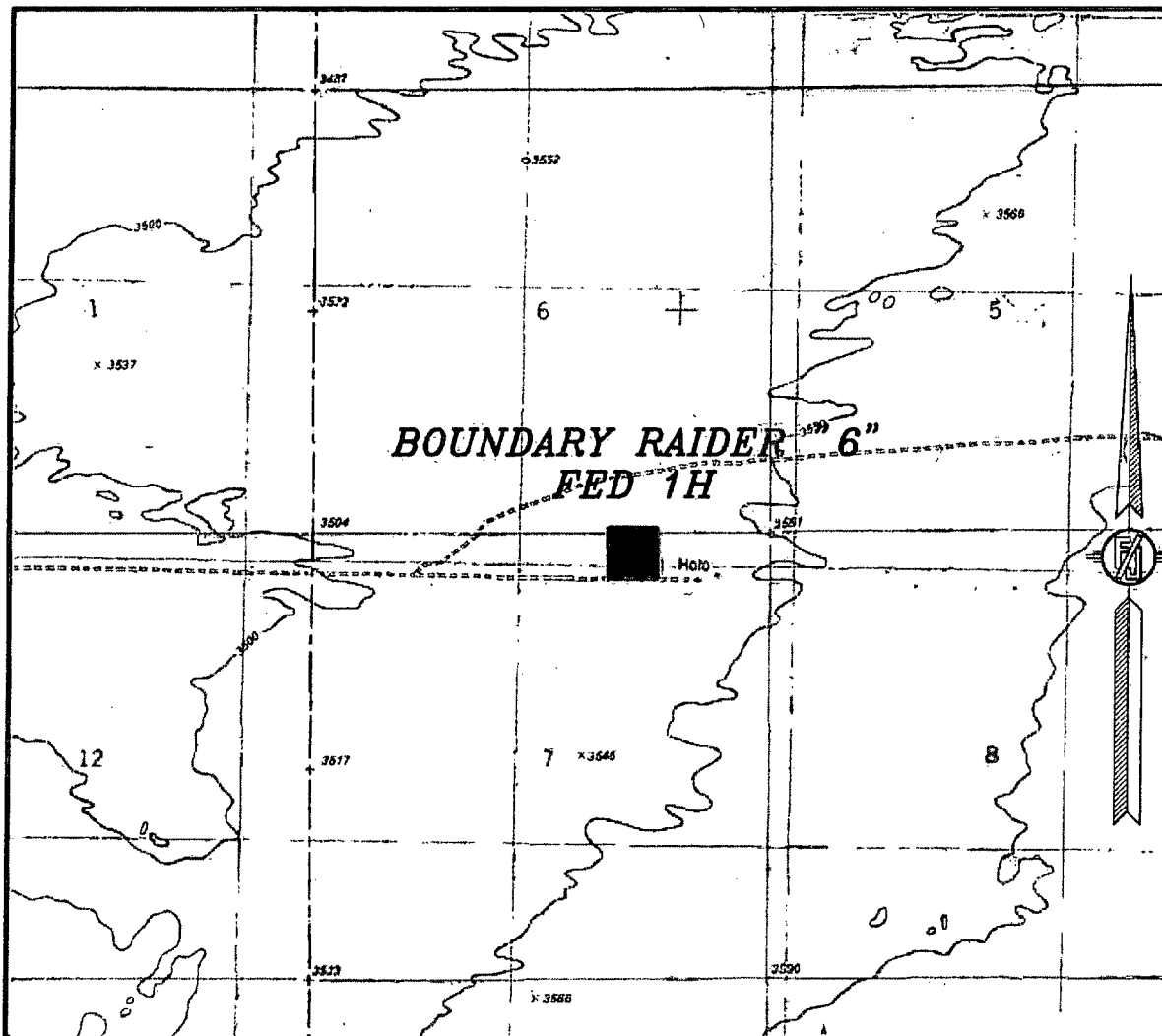
SURVEY NO. 1716A

MADRON SURVEYING, INC.

301 SOUTH CANAL
(575) 234-3341

CARLSBAD, NEW MEXICO

SECTION 7, TOWNSHIP 23 SOUTH, RANGE 32 EAST, N.M.P.M.
LEA COUNTY, STATE OF NEW MEXICO
LOCATION VERIFICATION MAP



USGS QUAD MAP:
BOOTLEG RIDGE

NOT TO SCALE

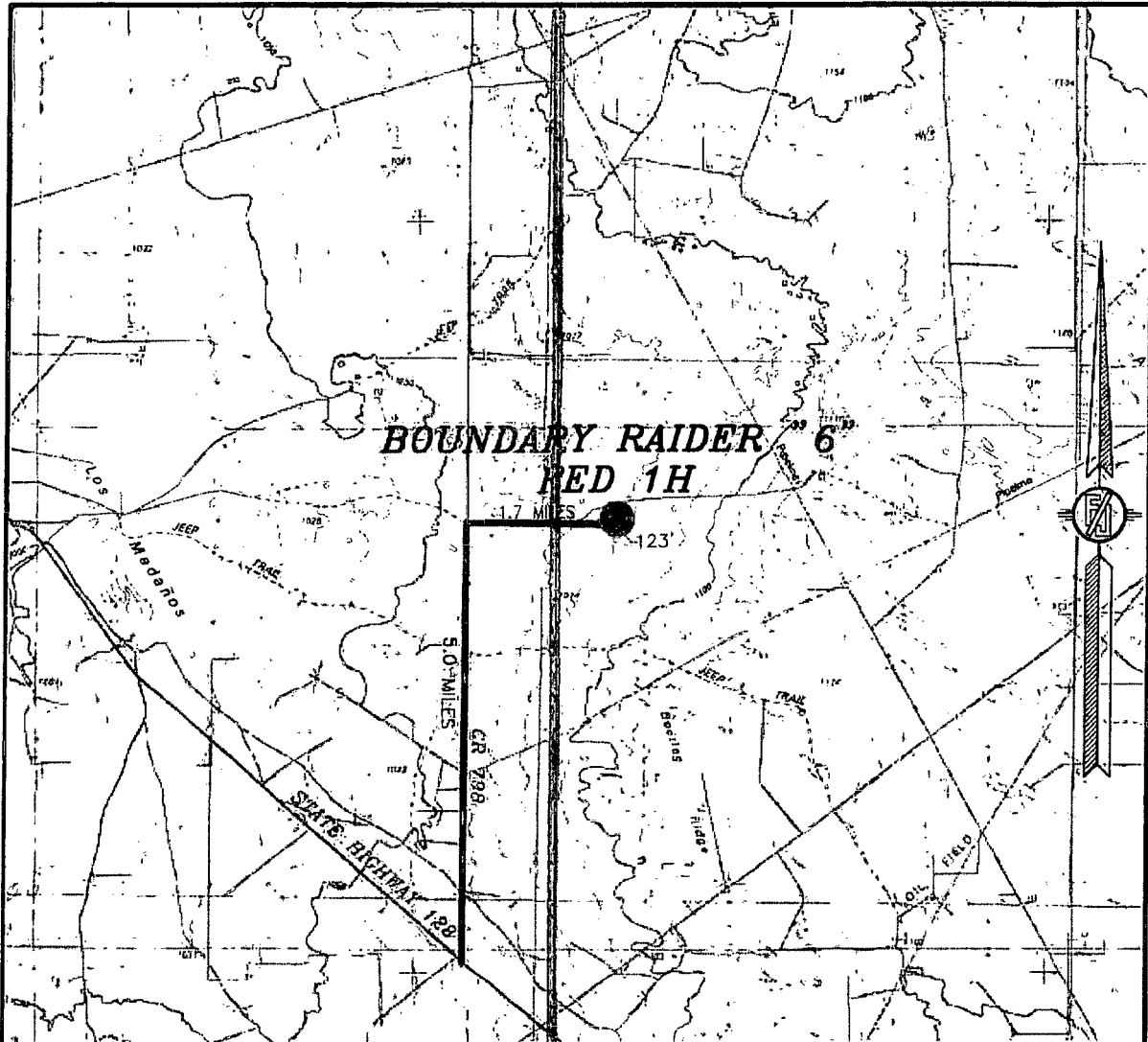
DEVON ENERGY PRODUCTION COMPANY, L.P.
BOUNDARY RAIDER "6" FED 1H
LOCATED 200 FT. FROM THE NORTH LINE
AND 1650 FT. FROM THE EAST LINE OF
SECTION 7, TOWNSHIP 23 SOUTH,
RANGE 32 EAST, N.M.P.M.
LEA COUNTY, STATE OF NEW MEXICO

NOVEMBER 19, 2014

SURVEY NO. 1716A

MADRON SURVEYING, INC. 301 SOUTH CANAL (575) 234-3341 CARLSBAD, NEW MEXICO

SECTION 7, TOWNSHIP 23 SOUTH, RANGE 32 EAST, N.M.P.M.
LEA COUNTY, STATE OF NEW MEXICO
VICINITY MAP



DISTANCES IN MILES

NOT TO SCALE

DEVON ENERGY PRODUCTION COMPANY, L.P.

BOUNDARY RAIDER "6" FED 1H

LOCATED 200 FT. FROM THE NORTH LINE
AND 1650 FT. FROM THE EAST LINE OF

SECTION 7, TOWNSHIP 23 SOUTH,

RANGE 32 EAST, N.M.P.M.

LEA COUNTY, STATE OF NEW MEXICO

DIRECTIONS TO LOCATION

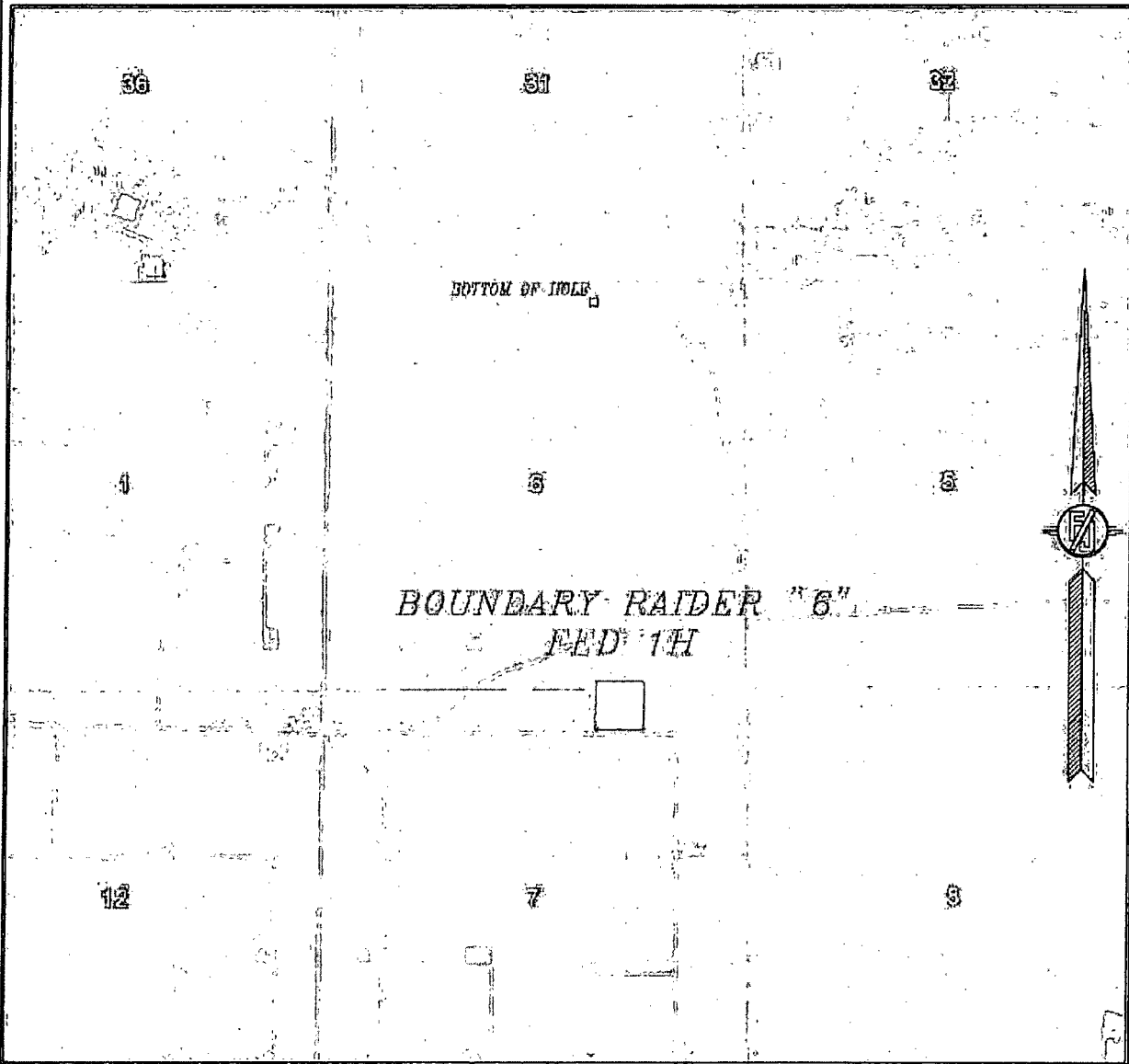
FROM THE INTERSECTION OF STATE HIGHWAY 128 (JAL HIGHWAY) AND
CR 798 (RED ROAD): GO NORTH ON CR 798 5.0 MILES JUST PAST A
CATTLE GUARD, TURN RIGHT (EAST) ON A CALICHE LEASE ROAD GO
1.7 MILES, GO NORTHEAST 123° TO THE SOUTHWEST CORNER FOR
THIS LOCATION.

NOVEMBER 19, 2014

SURVEY NO. 1716A

MADRON SURVEYING, INC. 301 SOUTH CANAL (575) 234-3341 CARLSBAD, NEW MEXICO

SECTION 7, TOWNSHIP 23 SOUTH, RANGE 32 EAST, N.M.P.M.
LEA COUNTY, STATE OF NEW MEXICO
AERIAL PHOTO



NOT TO SCALE
AERIAL PHOTO:
GOOGLE EARTH
FEBRUARY 2014

DEVON ENERGY PRODUCTION COMPANY, L.P.

BOUNDARY RAIDER "6" FED 1H

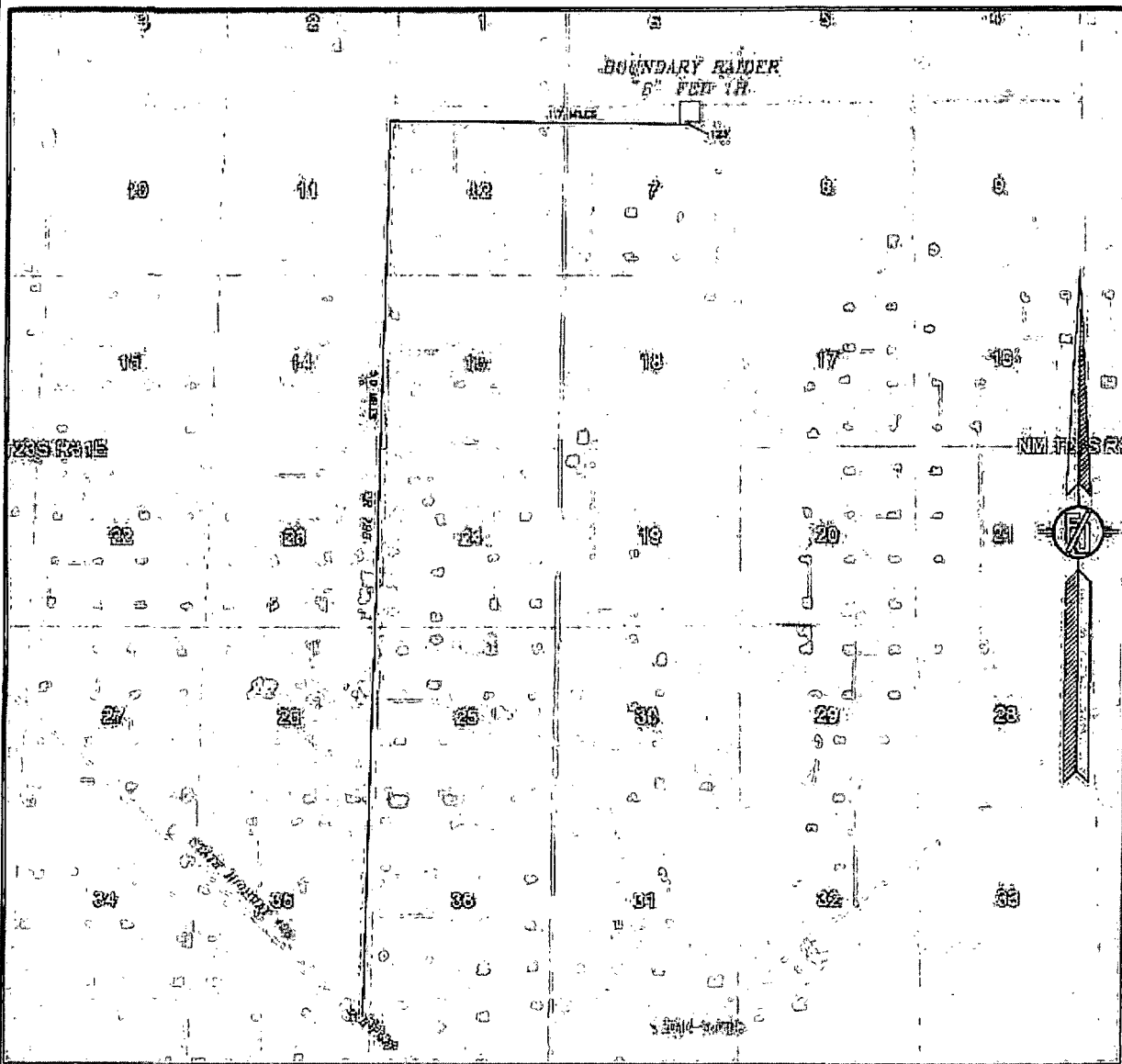
LOCATED 200 FT. FROM THE NORTH LINE
AND 1650 FT. FROM THE EAST LINE OF
SECTION 7, TOWNSHIP 23 SOUTH,
RANGE 32 EAST, N.M.P.M.
LEA COUNTY, STATE OF NEW MEXICO

NOVEMBER 19, 2014

SURVEY NO. 1716A

MADRON SURVEYING, INC. 301 SOUTH CANAL (575) 234-3341 CARLSBAD, NEW MEXICO

SECTION 7, TOWNSHIP 23 SOUTH, RANGE 32 EAST, N.M.P.M.
LEA COUNTY, STATE OF NEW MEXICO
ACCESS AERIAL ROUTE MAP



NOT TO SCALE
AERIAL PHOTO:
GOOGLE EARTH
AERDATE

DEVON ENERGY PRODUCTION COMPANY, L.P.

BOUNDARY RAIDER "6" FED 1H

LOCATED 200 FT. FROM THE NORTH LINE
AND 1650 FT. FROM THE EAST LINE OF
SECTION 7, TOWNSHIP 23 SOUTH,
RANGE 32 EAST, N.M.P.M.
LEA COUNTY, STATE OF NEW MEXICO

NOVEMBER 19, 2014

SURVEY NO. 1716A

MADRON SURVEYING, INC. 301 SOUTH CANAL CARLSBAD, NEW MEXICO
(575) 234-3341

