

District I
1625 N. French Dr., Hobbs, NM 88240
Phone: (575) 393-6161 Fax: (575) 393-0720
District II
811 S. First St., Artesia, NM 88210
Phone: (575) 748-1283 Fax: (575) 748-9720
District III
1000 Rio Brazos Road, Aztec, NM 87410
Phone: (505) 334-6178 Fax: (505) 334-6170
District IV
1220 S. St. Francis Dr., Santa Fe, NM 87505
Phone: (505) 476-3460 Fax: (505) 476-3462

State of New Mexico
Energy, Minerals & Natural Resources Department
OIL CONSERVATION DIVISION
1220 South St. Francis Dr.
Santa Fe, NM 87505

Form C-102
Revised August 1, 2011
Submit one copy to appropriate
District Office

☐ AMENDED REPORT

APR 29 2016

WELL LOCATION AND ACREAGE DEDICATION PLAT

¹ API Number 30-025-43208		² Pool Code 97892	³ Well Name WC-025 G-06 S263407P; UPR BONE SPRING
⁴ Property Code 316127	⁵ Property Name GREEN WAVE 20-17 FED		⁶ Well Number 28H
⁷ OGRID No. 6137	⁸ Operator Name DEVON ENERGY PRODUCTION COMPANY, L.P.		⁹ Elevation 3342.6

¹⁰ Surface Location

UL or lot no.	Section	Township	Range	Lot Idn	Feet from the	North/South line	Feet from the	East/West line	County
H	20	26 S	34 E		2630	NORTH	330	EAST	LEA

¹¹ Bottom Hole Location If Different From Surface

UL or lot no.	Section	Township	Range	Lot Idn	Feet from the	North/South line	Feet from the	East/West line	County
A	17	26 S	34 E		330	NORTH	380	EAST	LEA

¹² Dedicated Acres	¹³ Joint or Infill	¹⁴ Consolidation Code	¹⁵ Order No.
240			

No allowable will be assigned to this completion until all interests have been consolidated or a non-standard unit has been approved by the division.

<p>NW CORNER SEC. 17 LAT. = 32.0506993°N LONG. = 103.5004452°W NMSP EAST (FT) N = 383177.75 E = 799384.71</p> <p>W/4 CORNER SEC. 17 LAT. = 32.0434462°N LONG. = 103.5004355°W NMSP EAST (FT) N = 380539.17 E = 799408.06</p> <p>SECTION CORNER LAT. = 32.0361972°N LONG. = 103.5004293°W NMSP EAST (FT) N = 377902.09 E = 799430.33</p> <p>W/4 CORNER SEC. 20 LAT. = 32.0289377°N LONG. = 103.5004198°W NMSP EAST (FT) N = 375261.22 E = 799453.63</p> <p>SW CORNER SEC. 20 LAT. = 32.0216783°N LONG. = 103.5004145°W NMSP EAST (FT) N = 372620.35 E = 799475.65</p>		<p>N/4 CORNER SEC. 17 LAT. = 32.0506967°N LONG. = 103.4919052°W NMSP EAST (FT) N = 383197.31 E = 802030.69</p> <p>SECTION CORNER LAT. = 32.0362184°N LONG. = 103.4919125°W NMSP EAST (FT) N = 377930.28 E = 802069.47</p> <p>S/4 CORNER SEC. 20 LAT. = 32.0216780°N LONG. = 103.4918672°W NMSP EAST (FT) N = 372640.77 E = 802124.71</p>		<p>NE CORNER SEC. 17 LAT. = 32.0506958°N LONG. = 103.4833743°W NMSP EAST (FT) N = 383217.69 E = 804673.83</p> <p>E/4 CORNER SEC. 17 LAT. = 32.0434435°N LONG. = 103.4833713°W NMSP EAST (FT) N = 380579.41 E = 804695.54</p> <p>SECTION CORNER LAT. = 32.0361753°N LONG. = 103.4833607°W NMSP EAST (FT) N = 377935.34 E = 804719.84</p> <p>E/4 CORNER SEC. 20 LAT. = 32.0289285°N LONG. = 103.4833470°W NMSP EAST (FT) N = 375299.06 E = 804742.05</p> <p>SE CORNER SEC. 20 LAT. = 32.0216672°N LONG. = 103.4833470°W NMSP EAST (FT) N = 372657.52 E = 804765.39</p>	
--	--	--	--	--	--

" OPERATOR CERTIFICATION

I hereby certify that the information contained herein is true and complete to the best of my knowledge and belief; and that this organization either owns a working interest or unleased mineral interest in the land including the proposed bottom hole location or has a right to drill this well at this location pursuant to a contract with an owner of such a mineral or working interest, or to a voluntary pooling agreement or a compulsory pooling order heretofore entered by the division.

Signature: *[Signature]* Date: 4/22/2015

David H. Cook
Printed Name
david.cook@dmv.com
E-mail Address

" SURVEYOR CERTIFICATION

I hereby certify that the well location shown on this plat was plotted from field notes and that the same is true and correct to the best of my belief.

MARCH 4, 2016 (12797)

Date of Survey

Signature and Seal of Professional Surveyor: *[Signature]*

Certificate Number: FARMON F. JARAMILLO, PLS 12797

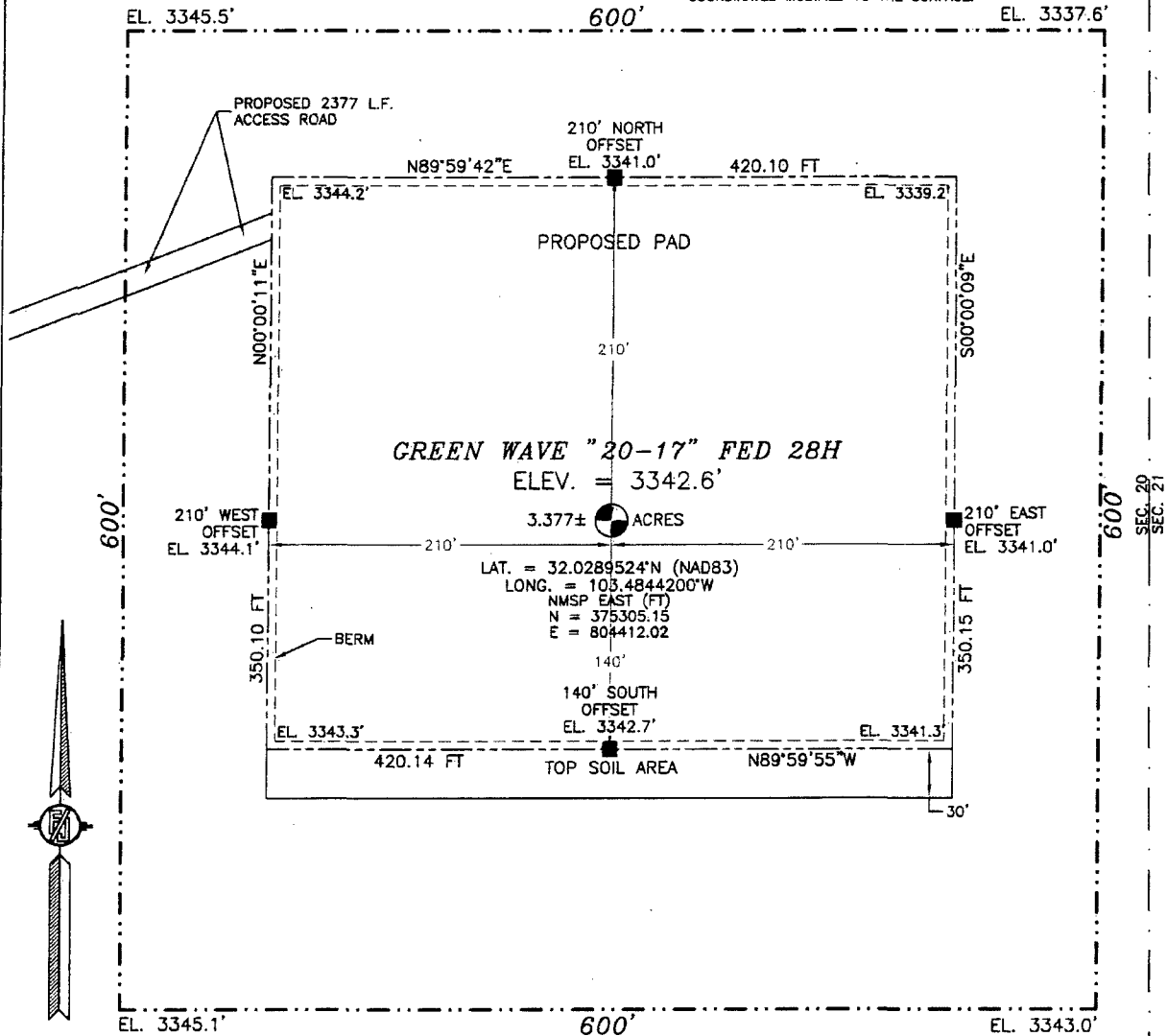
SURVEY NO. 3709

PP: 2140 FNL & 330 FEL

MAY 03 2016

SECTION 20, TOWNSHIP 26 SOUTH, RANGE 34 EAST, N.M.P.M.
LEA COUNTY, STATE OF NEW MEXICO
SITE MAP

NOTE: LATITUDE AND LONGITUDE COORDINATES ARE SHOWN USING THE NORTH AMERICAN DATUM OF 1983 (NAD83). LISTED NEW MEXICO STATE PLANE EAST COORDINATES ARE GRID (NAD83). BASIS OF BEARING AND DISTANCES USED ARE NEW MEXICO STATE PLANE EAST COORDINATES MODIFIED TO THE SURFACE.



010 50 100 200

SCALE 1" = 100'

DIRECTIONS TO LOCATION

FROM THE INTERSECTION OF STATE HWY #128 AND COUNTY ROAD #2 (BATTLE AXE ROAD) GO SOUTH AND WEST ON BATTLE AXE ROAD APPROX. 12.2 MILES TO A LEASE ROAD ON LEFT (SOUTH) TURN SOUTH GO APPROX. 0.6 MILE ROAD TURNS LEFT (EAST) TURN EAST GO APPROX. 1.8 MILES TO A LEASE ROAD ON RIGHT (SOUTH) TURN SOUTH GO APPROX. 2.5 MILES TO AN EXISTING ROAD ON LEFT (EAST) GO EAST ON EXISTING ROAD APPROX. 0.7 MILE TO A FENCE GATE AND ROAD LATH. FOLLOW ROAD LATHS NORTHEAST APPROX. 0.4 MILE TO LOCATION

DEVON ENERGY PRODUCTION COMPANY, L.P.
GREEN WAVE "20-17" FED 28H
LOCATED 2630 FT. FROM THE NORTH LINE
AND 330 FT. FROM THE EAST LINE OF
SECTION 20, TOWNSHIP 26 SOUTH,
RANGE 34 EAST, N.M.P.M.
LEA COUNTY, STATE OF NEW MEXICO

MARCH 4, 2015

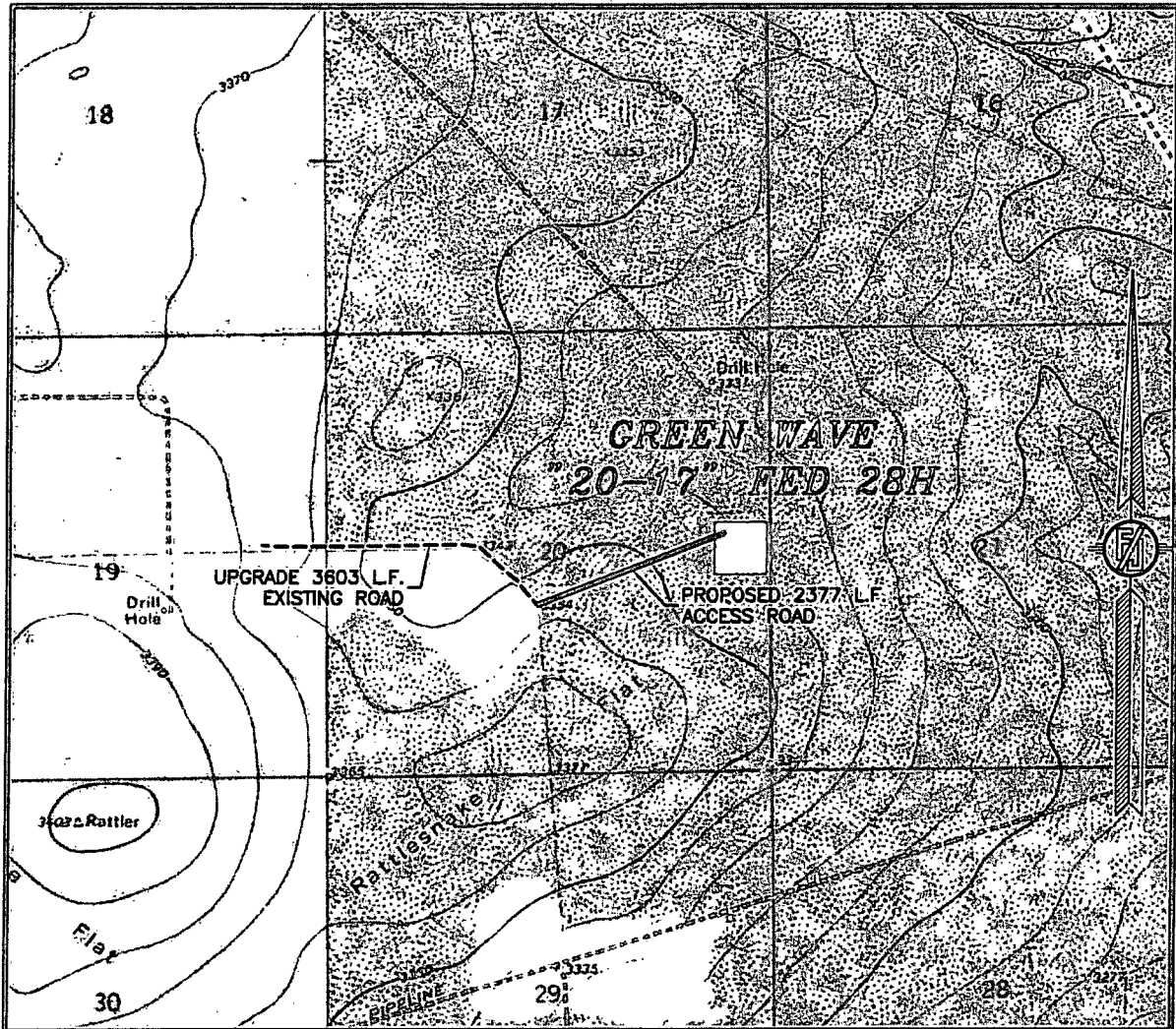
SURVEY NO. 3709

MADRON SURVEYING, INC.

301 SOUTH CANAL
(575) 234-3341

CARLSBAD, NEW MEXICO

SECTION 20, TOWNSHIP 26 SOUTH, RANGE 34 EAST, N.M.P.M.
LEA COUNTY, STATE OF NEW MEXICO
LOCATION VERIFICATION MAP



USGS QUAD MAP:
ANDREWS PLACE

NOT TO SCALE

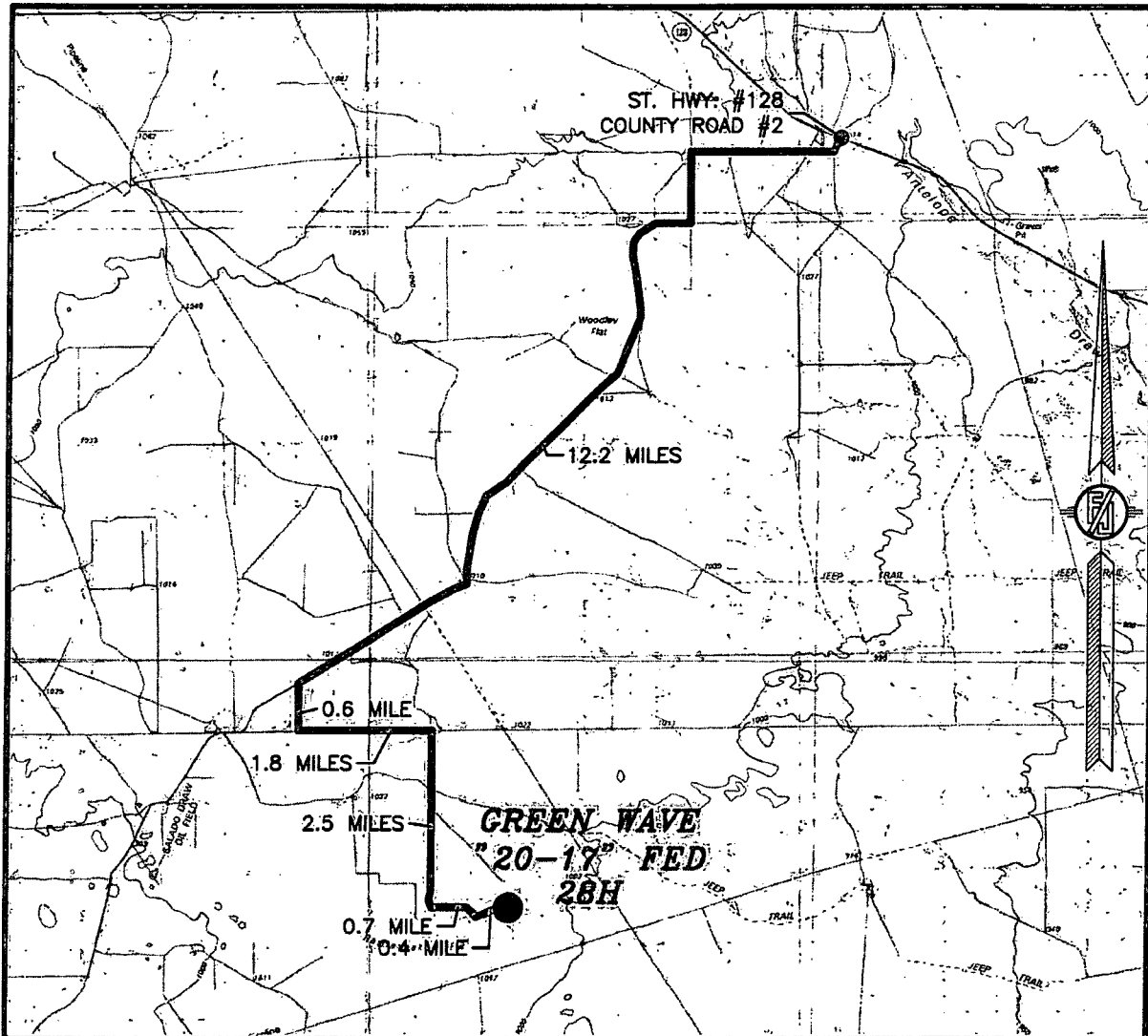
DEVON ENERGY PRODUCTION COMPANY, L.P.
GREEN WAVE "20-17" FED 28H
LOCATED 2630 FT. FROM THE NORTH LINE
AND 330 FT. FROM THE EAST LINE OF
SECTION 20, TOWNSHIP 26 SOUTH,
RANGE 34 EAST, N.M.P.M.
LEA COUNTY, STATE OF NEW MEXICO

MARCH 4, 2015

MADRON SURVEYING, INC. 301 SOUTH CANAL (575) 234-3341 CARLSBAD, NEW MEXICO

SURVEY NO. 3709

SECTION 20, TOWNSHIP 26 SOUTH, RANGE 34 EAST, N.M.P.M.
LEA COUNTY, STATE OF NEW MEXICO
VICINITY MAP



DISTANCES IN MILES

NOT TO SCALE

DIRECTIONS TO LOCATION

FROM THE INTERSECTION OF STATE HWY #128 AND COUNTY ROAD #2 (BATTLE AXE ROAD) GO SOUTH AND WEST ON BATTLE AXE ROAD APPROX. 12.2 MILES TO A LEASE ROAD ON LEFT (SOUTH) TURN SOUTH GO APPROX. 0.6 MILE ROAD TURNS LEFT (EAST) TURN EAST GO APPROX. 1.8 MILES TO A LEASE ROAD ON RIGHT (SOUTH) TURN SOUTH GO APPROX. 2.5 MILES TO AN EXISTING ROAD ON LEFT (EAST) GO EAST ON EXISTING ROAD APPROX. 0.7 MILE TO A FENCE GATE AND ROAD LATH. FOLLOW ROAD LATHS NORTHEAST APPROX. 0.4 MILE TO LOCATION

DEVON ENERGY PRODUCTION COMPANY, L.P.

GREEN WAVE "20-17" FED 28H

LOCATED 2630 FT. FROM THE NORTH LINE
AND 330 FT. FROM THE EAST LINE OF
SECTION 20, TOWNSHIP 26 SOUTH,
RANGE 34 EAST, N.M.P.M.
LEA COUNTY, STATE OF NEW MEXICO

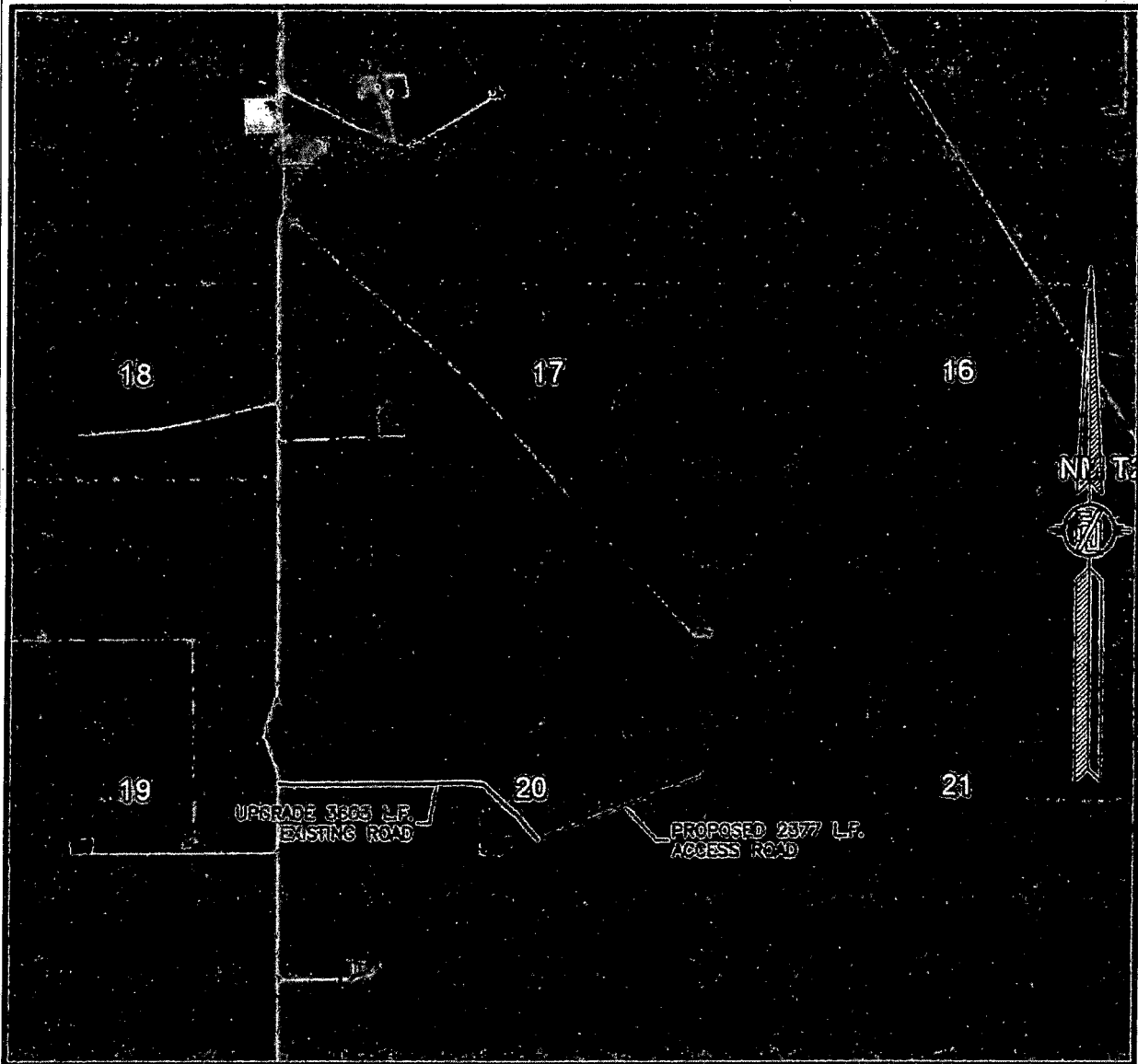
MARCH 4, 2015

SURVEY NO. 3709

MADRON SURVEYING, INC. 301 SOUTH CANAL (575) 234-3341

CARLSBAD, NEW MEXICO

SECTION 20, TOWNSHIP 26 SOUTH, RANGE 34 EAST, N.M.P.M.
LEA COUNTY, STATE OF NEW MEXICO
AERIAL PHOTO



NOT TO SCALE
AERIAL PHOTO:
GOOGLE EARTH
APR. 2013

DEVON ENERGY PRODUCTION COMPANY, L.P.

GREEN WAVE "20-17" FED 28H

LOCATED 2630 FT. FROM THE NORTH LINE

AND 330 FT. FROM THE EAST LINE OF

SECTION 20, TOWNSHIP 26 SOUTH,

RANGE 34 EAST, N.M.P.M.

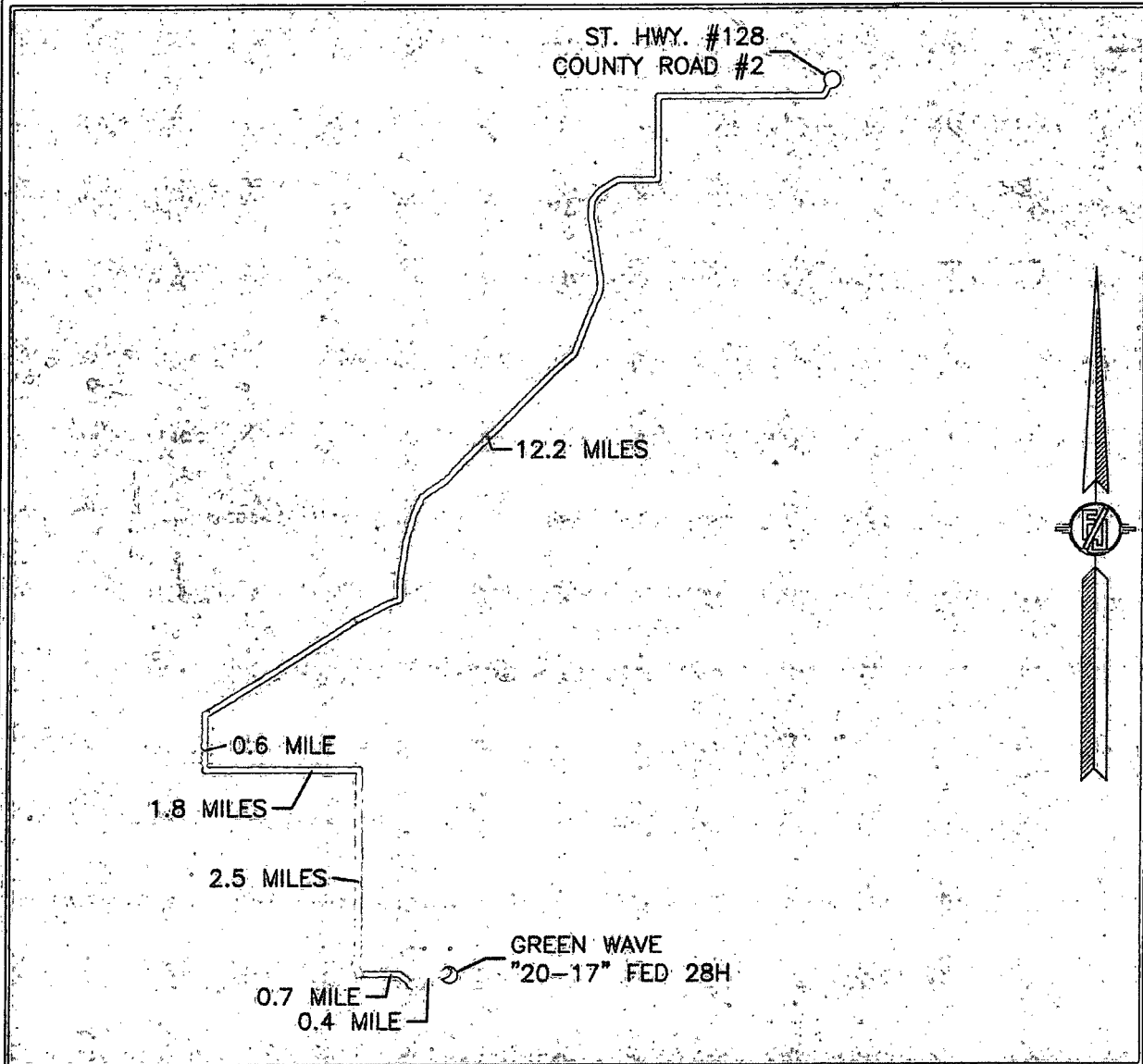
LEA COUNTY, STATE OF NEW MEXICO

MARCH 4, 2015

SURVEY NO. 3709

MADRON SURVEYING, INC. 301 SOUTH CANAL (575) 234-3341 CARLSBAD, NEW MEXICO

SECTION 20, TOWNSHIP 26 SOUTH, RANGE 34 EAST, N.M.P.M.
LEA COUNTY, STATE OF NEW MEXICO
AERIAL ACCESS ROUTE MAP



NOT TO SCALE
AERIAL PHOTO:
GOOGLE EARTH
APR. 2013

DEVON ENERGY PRODUCTION COMPANY, L.P.

GREEN WAVE "20-17" FED 28H

LOCATED 2630 FT. FROM THE NORTH LINE
AND 330 FT. FROM THE EAST LINE OF
SECTION 20, TOWNSHIP 26 SOUTH,
RANGE 34 EAST, N.M.P.M.
LEA COUNTY, STATE OF NEW MEXICO

MARCH 4, 2015

SURVEY NO. 3709

MADRON SURVEYING, INC. 301 SOUTH CANAL (575) 234-3341 CARLSBAD, NEW MEXICO

One Mile Radius Map

Estimated distances to nearest wellbores:

*From SHL: Leonard-Federal 1 2015 ft NNW
Leonard-Federal 1 345 ft W
*From BHL: Gunner 16 State SWD 1 705 ft E

26S 34E

18

19

8

SALADO FEDERAL

GUNNER 8 FEDERAL 8H

ZYSK FEDERAL

CHABOD 1 FEDERAL 1H

1 MILE

BHL

FEDERAL '53' COM 1

LEONARD-FEDERAL 1

MOSBACHER '20'

GREEN WAVE 20 FEDERAL 1H

9

YATES-FEDERAL A 1

NAUTILUS 16 STATE COM 601H

16

17

21

1 MILE

SHL
GREEN WAVE 20-17 FED 28H

29

28

devon

Green Wave 20-17 Fed 28H

1 Mile Radius Map

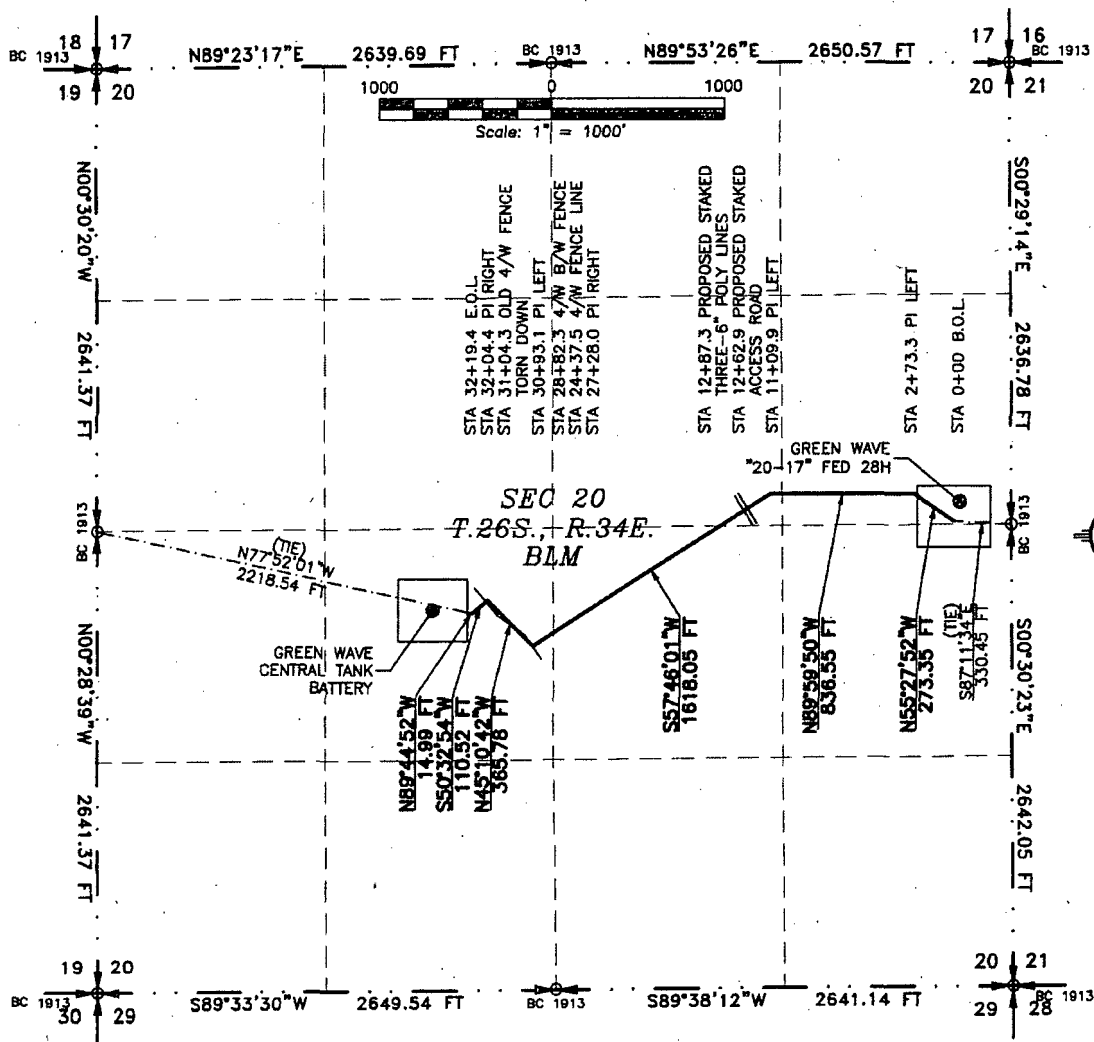
0 2,006
FEET

March 23, 2015

FLOWLINE PLAT

6" POLY FLEX PRODUCTION LINE AND A 6" GAS LIFT LINE BURIED IN THE SAME TRENCH FROM
GREEN WAVE "20-17" FED 28H TO GREEN WAVE CENTRAL TANK BATTERY

DEVON ENERGY PRODUCTION COMPANY, L.P.
CENTERLINE SURVEY OF A PIPELINE CROSSING
SECTION 20, TOWNSHIP 26 SOUTH, RANGE 34 EAST, N.M.P.M.
LEA COUNTY, STATE OF NEW MEXICO
APRIL 13, 2016



SEE NEXT SHEET (2-4) FOR DESCRIPTION

SURVEYOR CERTIFICATE

I, FILMON F. JARAMILLO, A NEW MEXICO PROFESSIONAL SURVEYOR NO. 12797, HEREBY CERTIFY THAT I HAVE CONDUCTED AND AM RESPONSIBLE FOR THIS SURVEY, THAT THIS SURVEY IS TRUE AND CORRECT TO THE BEST OF MY KNOWLEDGE AND BELIEF, AND THAT THIS SURVEY AND PLAT MEET THE MINIMUM STANDARDS FOR LAND SURVEYING IN THE STATE OF NEW MEXICO.

IN WITNESS WHEREOF, THIS CERTIFICATE IS EXECUTED AT CARLSBAD,

NEW MEXICO, THIS 14 DAY OF APRIL, 2016.

GENERAL NOTES

1.) THE INTENT OF THIS ROUTE SURVEY IS TO ACQUIRE AN EASEMENT.

2.) BASIS OF BEARING IS NMSP EAST MODIFIED TO SURFACE COORDINATES.

SHEET: 1-4

MADRON SURVEYING, INC. 301 SOUTH CANAL CARLSBAD, NEW MEXICO (575) 234-3341

SURVEY NO. 4102A

FLOWLINE PLAT

6" POLY FLEX PRODUCTION LINE AND A 6" GAS LIFT LINE BURIED IN THE SAME TRENCH FROM
GREEN WAVE "20-17" FED 28H TO GREEN WAVE CENTRAL TANK BATTERY

DEVON ENERGY PRODUCTION COMPANY, L.P.
CENTERLINE SURVEY OF A PIPELINE CROSSING
SECTION 20, TOWNSHIP 26 SOUTH, RANGE 34 EAST, N.M.P.M.
LEA COUNTY, STATE OF NEW MEXICO
APRIL 13, 2016

DESCRIPTION

A STRIP OF LAND 30 FEET WIDE CROSSING BUREAU OF LAND MANAGEMENT LAND IN SECTION 20, TOWNSHIP 26 SOUTH, RANGE 34 EAST, N.M.P.M., LEA COUNTY, STATE OF NEW MEXICO AND BEING 15 FEET EACH SIDE OF THE FOLLOWING DESCRIBED CENTERLINE SURVEY:

BEGINNING AT A POINT WITHIN THE SE/4 NE/4 OF SAID SECTION 20, TOWNSHIP 26 SOUTH, RANGE 34 EAST, N.M.P.M., WHENCE THE EAST QUARTER CORNER OF SAID SECTION 20, TOWNSHIP 26 SOUTH, RANGE 34 EAST, N.M.P.M. BEARS S87°11'33"E, A DISTANCE OF 330.45 FEET;
THENCE N55°27'52"W A DISTANCE OF 273.35 FEET TO AN ANGLE POINT OF THE LINE HEREIN DESCRIBED;
THENCE N89°59'50"W A DISTANCE OF 836.55 FEET TO AN ANGLE POINT OF THE LINE HEREIN DESCRIBED;
THENCE S57°46'01"W A DISTANCE OF 1618.05 FEET TO AN ANGLE POINT OF THE LINE HEREIN DESCRIBED;
THENCE N45°10'42"W A DISTANCE OF 365.78 FEET TO AN ANGLE POINT OF THE LINE HEREIN DESCRIBED;
THENCE S50°32'54"W A DISTANCE OF 110.52 FEET TO AN ANGLE POINT OF THE LINE HEREIN DESCRIBED;
THENCE N89°44'52"W A DISTANCE OF 14.99 FEET THE TERMINUS OF THIS CENTERLINE SURVEY, WHENCE THE WEST QUARTER CORNER OF SAID SECTION 20, TOWNSHIP 26 SOUTH, RANGE 34 EAST, N.M.P.M. BEARS N77°52'01"W, A DISTANCE OF 2218.54 FEET;

SAID STRIP OF LAND BEING 3219.24 FEET OR 195.11 RODS IN LENGTH, CONTAINING 2.217 ACRES MORE OR LESS AND BEING ALLOCATED BY FORTIES AS FOLLOWS:

SE/4 NE/4	1042.27 L.F.	63.17 RODS	0.718 ACRES
SW/4 NE/4	411.15 L.F.	24.92 RODS	0.283 ACRES
NW/4 SE/4	1131.02 L.F.	68.55 RODS	0.779 ACRES
NE/4 SW/4	634.80 L.F.	38.47 RODS	0.437 ACRES

SURVEYOR CERTIFICATE

I, FILIMON F. JARAMILLO, A NEW MEXICO PROFESSIONAL SURVEYOR NO. 12797, HEREBY CERTIFY THAT I HAVE CONDUCTED AND AM RESPONSIBLE FOR THIS SURVEY, THAT THIS SURVEY IS TRUE AND CORRECT TO THE BEST OF MY KNOWLEDGE AND BELIEF, AND THAT THIS SURVEY AND PLAT MEET THE MINIMUM STANDARDS FOR LAND SURVEYING IN THE STATE OF NEW MEXICO.

IN WITNESS WHEREOF, THIS CERTIFICATE IS EXECUTED AT CARLSBAD,

NEW MEXICO, THIS 19 DAY OF APRIL 2016

GENERAL NOTES

1.) THE INTENT OF THIS ROUTE SURVEY IS TO ACQUIRE AN EASEMENT.

2.) BASIS OF BEARING IS NMSP EAST MODIFIED TO SURFACE COORDINATES.

MADRON SURVEYING, INC.
301 SOUTH CANAL
CARLSBAD, NEW MEXICO 88220
Phone (575) 234-3341

SHEET: 2-4

MADRON SURVEYING, INC.

FILIMON F. JARAMILLO PLS 12797
301 SOUTH CANAL
(575) 234-3341

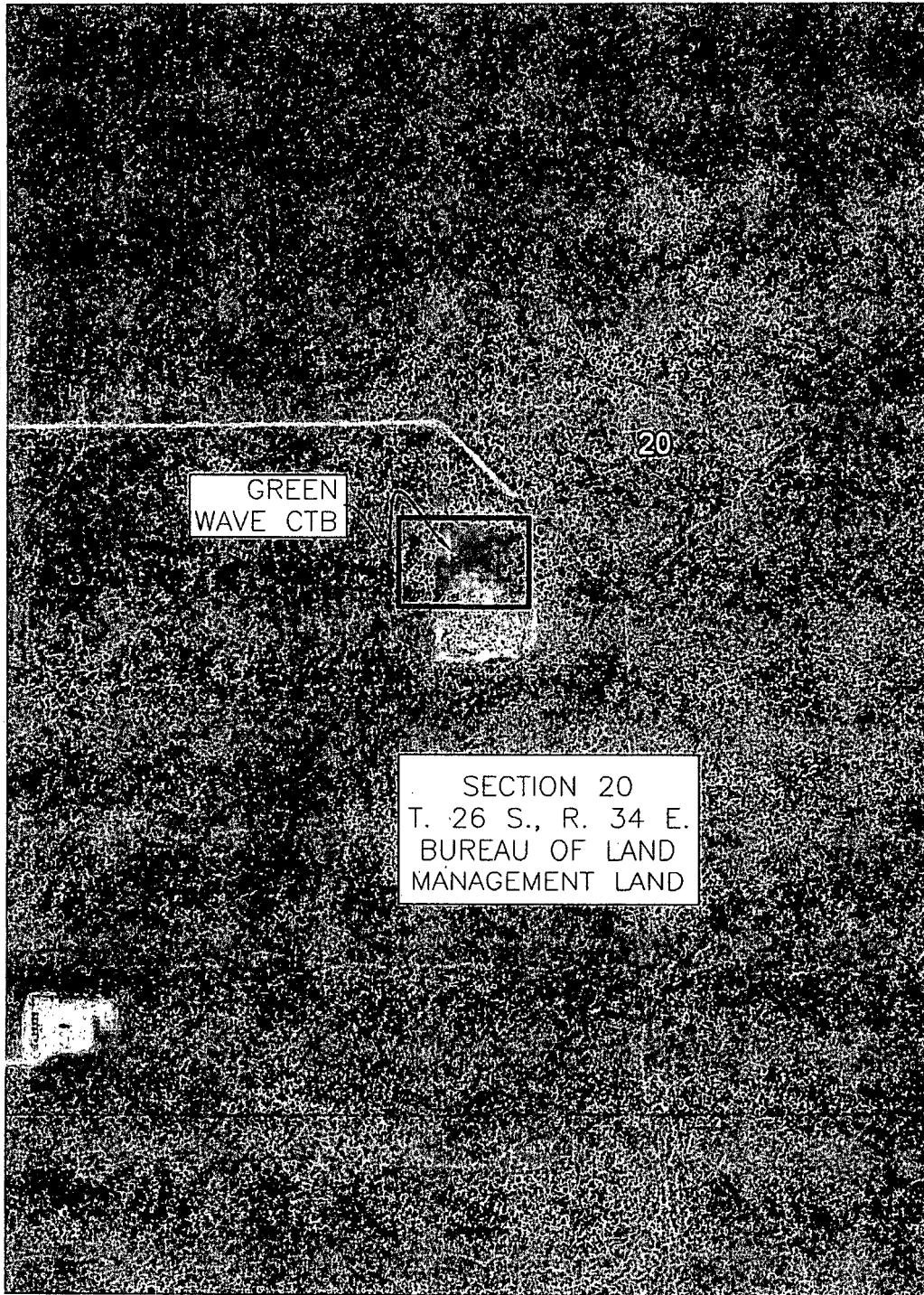
SURVEY NO. 4102A
CARLSBAD, NEW MEXICO

GREEN WAVE CTB

DEVON ENERGY PRODUCTION COMPANY, L.P.
IN THE N/2 NE/4 SW/4 OF
SECTION 20, TOWNSHIP 26 SOUTH, RANGE 34 EAST, N.M.P.M.
LEA COUNTY, STATE OF NEW MEXICO

SEPTEMBER 18, 2015

AERIAL PHOTO



SHEET: 3-3

MADRON SURVEYING, INC. 301 SOUTH CANAL (575) 234-3341 CARLSBAD, NEW MEXICO

SURVEY NO. 4088A