

District I  
1625 N. French Dr., Hobbs, NM 88240  
Phone: (575) 393-6161 Fax: (575) 393-0720  
District II  
811 S. First St., Artesia, NM 88210  
Phone: (575) 748-1283 Fax: (575) 748-9720  
District III  
1000 Rio Brazos Road, Aztec, NM 87410  
Phone: (505) 334-6178 Fax: (505) 334-6170  
District IV  
1220 S. St. Francis Dr., Santa Fe, NM 87505  
Phone: (505) 476-3460 Fax: (505) 476-3462

State of New Mexico  
Energy, Minerals & Natural Resources Department  
OIL CONSERVATION DIVISION  
1220 South St. Francis Dr.  
Santa Fe, NM 87505

Form C-102  
Revised August 1, 2011  
Submit one copy to appropriate  
District Office  
☐ AMENDED REPORT

RECEIVED

WELL LOCATION AND ACREAGE DEDICATION PLAT

<sup>1</sup> API Number 30-025-43203	<sup>2</sup> Pool Code 97964	<sup>3</sup> Pool Name WC-25 G-075243225C; Lower Bone Spring
<sup>4</sup> Property Code 39911	<sup>5</sup> Property Name BELL LAKE 24 FED	<sup>6</sup> Well Number 7H
<sup>7</sup> GRID No. 6137	<sup>8</sup> Operator Name DEVON ENERGY PRODUCTION COMPANY, L.P.	<sup>9</sup> Elevation 3554.2

<sup>10</sup> Surface Location

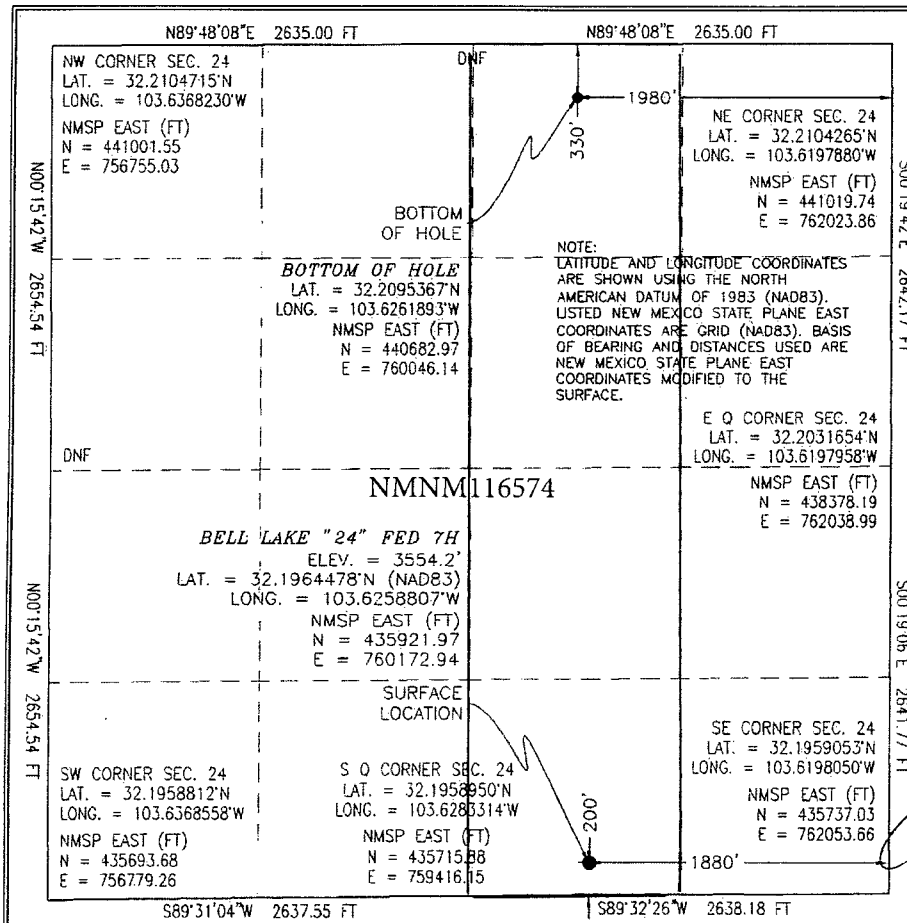
UL or lot no.	Section	Township	Range	Lot Idn	Feet from the	North/South line	Feet from the	East/West line	County
O	24	24 S	32 E		200	SOUTH	1880	EAST	LEA

<sup>11</sup> Bottom Hole Location If Different From Surface

UL or lot no.	Section	Township	Range	Lot Idn	Feet from the	North/South line	Feet from the	East/West line	County
B	24	24 S	32 E		330	NORTH	1980	EAST	LEA

<sup>12</sup> Dedicated Acres 160.00	<sup>13</sup> Joint or Infill	<sup>14</sup> Consolidation Code	<sup>15</sup> Order No.
---	-------------------------------	----------------------------------	-------------------------

No allowable will be assigned to this completion until all interests have been consolidated or a non-standard unit has been approved by the division.



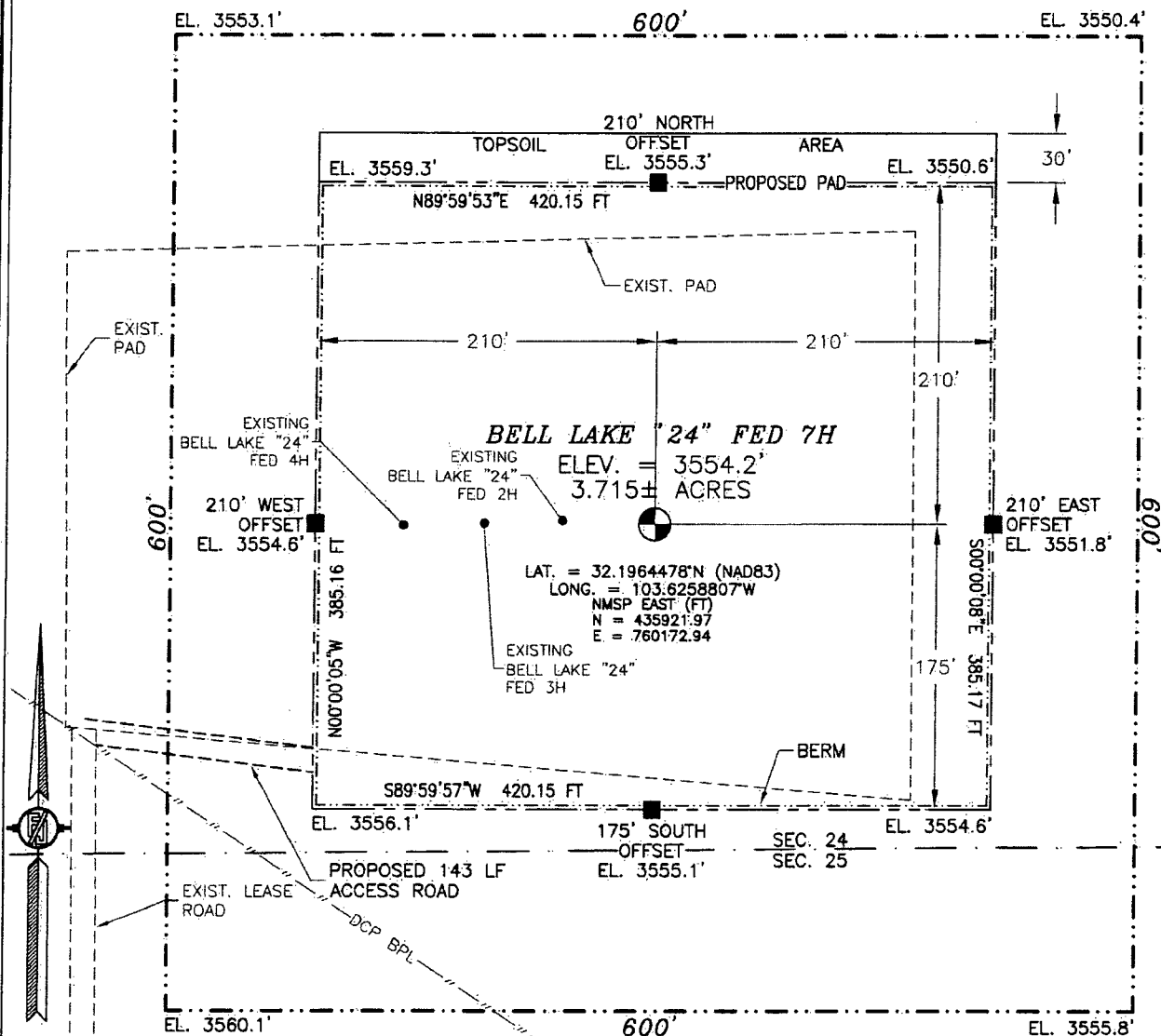
<b><sup>17</sup> OPERATOR CERTIFICATION</b>	
I hereby certify that the information contained herein is true and complete to the best of my knowledge and belief, and that this organization either owns a working interest or unleased mineral interest in the land including the proposed bottom hole location or has a right to drill this well at this location pursuant to a contract with an owner of such a mineral or working interest, or to a voluntary pooling agreement or a compulsory pooling order heretofore entered by the division.	
Signature Linda Good	Date 4/23/15
Printed Name Linda Good	
E-mail Address linda.good@dmn.com	
<b><sup>18</sup> SURVEYOR CERTIFICATION</b>	
I hereby certify that the well location shown on this plat was plotted from field notes of actual surveys made by me or under my supervision, and that the same are true and correct to the best of my belief.	
MARCH 16, 2015	
Date of Survey	
Signature and Seal of Professional Surveyor: E. JARAMILLO	
Certificate Number: ELLIMON F. JARAMILLO, PLS 12797	
SURVEY NO. 3783	

MAY 03 2016

SECTION 24, TOWNSHIP 24 SOUTH, RANGE 32 EAST, N.M.P.M.  
LEA COUNTY, STATE OF NEW MEXICO

SITE MAP

NOTE: LATITUDE AND LONGITUDE COORDINATES ARE SHOWN USING THE NORTH AMERICAN DATUM OF 1983 (NAD83). LISTED NEW MEXICO STATE PLANE EAST COORDINATES ARE GRID (NAD83). BASIS OF BEARING AND DISTANCES USED ARE NEW MEXICO STATE PLANE EAST COORDINATES MODIFIED TO THE SURFACE



010 50 100 200

SCALE 1" = 100'

DIRECTIONS TO LOCATION

FROM INTERSECTION OF CR 1 (ORLA HIGHWAY) AND STATE HIGHWAY 128 GO APPROX. 3.0 MILES EAST ON STATE HIGHWAY 128 TO A LEASE ROAD ON RIGHT SIDE (SOUTH) OF STATE HIGHWAY 128. TURN RIGHT (SOUTH) AT CATTLE GUARD, GO APPROX. 1.1 MILES TO LEASE ROAD ON RIGHT SIDE (WEST); TURN RIGHT (WEST) GO APPROX. 0.4 OF A MILE. TURN RIGHT (NORTH) GO APPROX. 671' TO EXISTING PAD. TURN RIGHT (EAST) GO APPROX. 143' TO THE SOUTHWEST PAD CORNER FOR THIS LOCATION.

DEVON ENERGY PRODUCTION COMPANY, L.P.

BELL LAKE "24" FED 7H

LOCATED 200 FT. FROM THE SOUTH LINE  
AND 1880 FT. FROM THE EAST LINE OF  
SECTION 24, TOWNSHIP 24 SOUTH,  
RANGE 32 EAST, N.M.P.M.  
LEA COUNTY, STATE OF NEW MEXICO

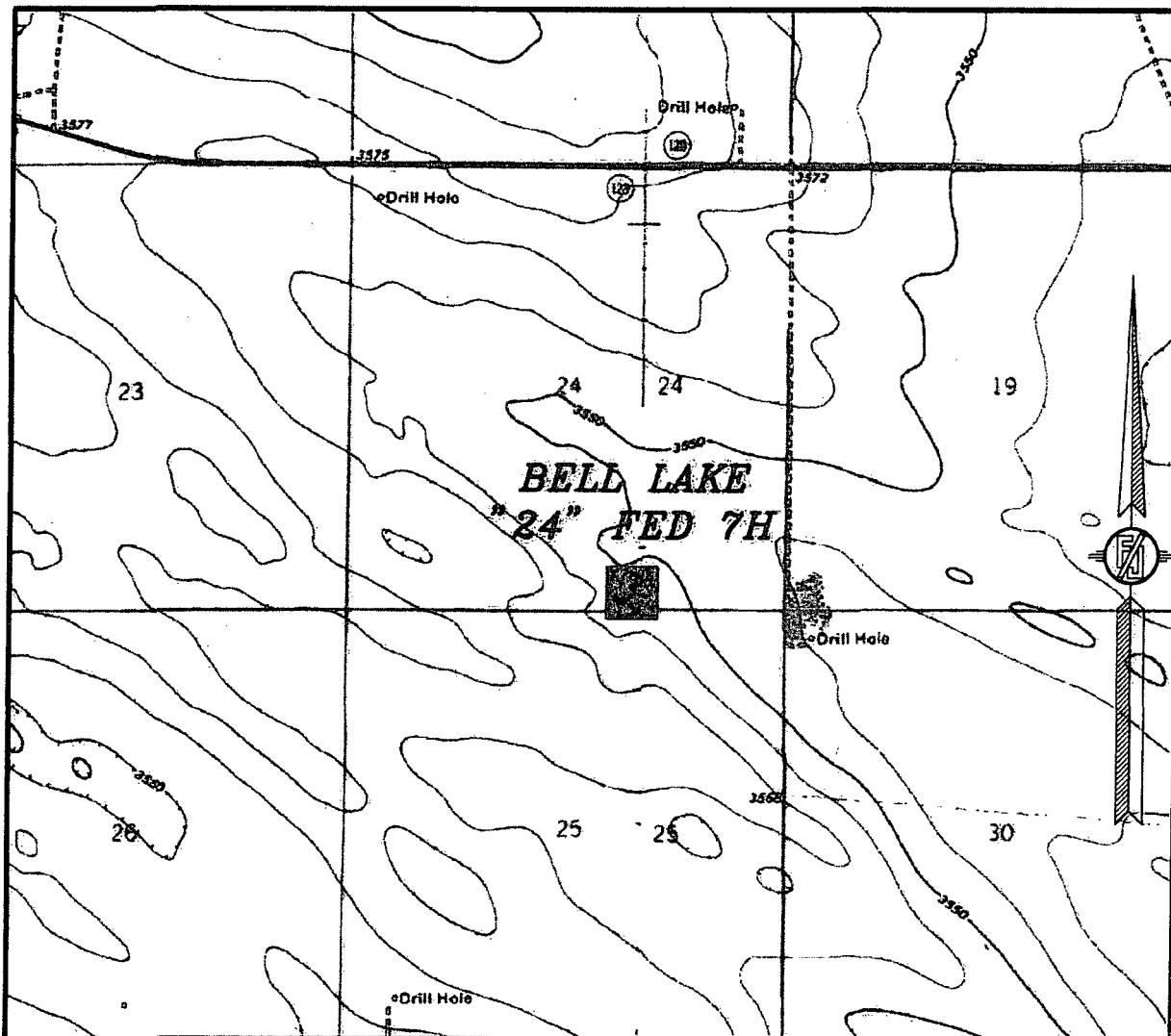
MARCH 16, 2015

SURVEY NO. 3783

MADRON SURVEYING, INC. 301 SOUTH CANAL (575) 234-3341

CARLSBAD, NEW MEXICO

SECTION 24, TOWNSHIP 24 SOUTH, RANGE 32 EAST, N.M.P.M.  
LEA COUNTY, STATE OF NEW MEXICO  
LOCATION VERIFICATION MAP



USGS QUAD MAP:  
PADUCA BREAKS NW

NOT TO SCALE

DEVON ENERGY PRODUCTION COMPANY, L.P.

**BELL LAKE "24" FED 7H**

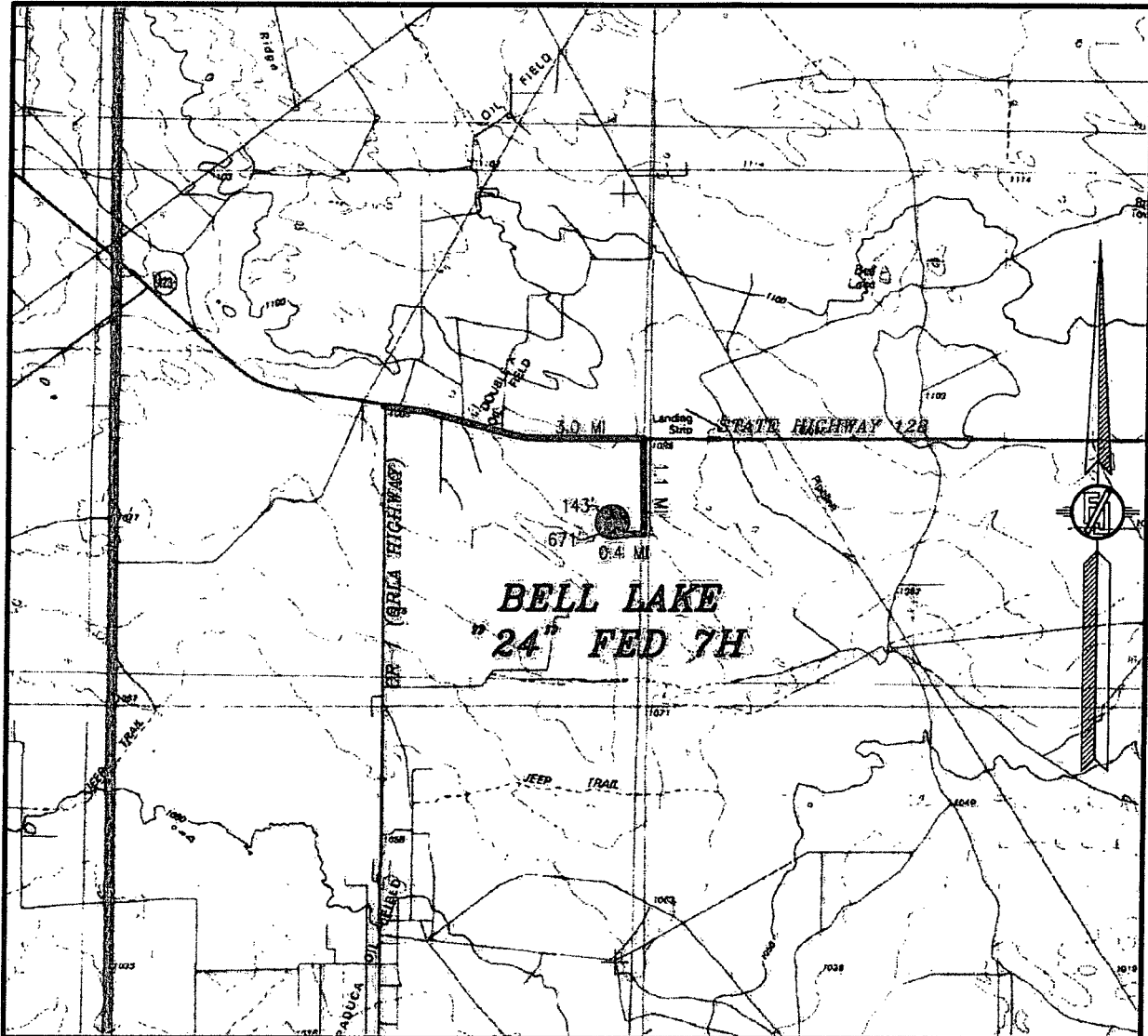
LOCATED 200 FT. FROM THE SOUTH LINE  
AND 1880 FT. FROM THE EAST LINE OF  
SECTION 24, TOWNSHIP 24 SOUTH,  
RANGE 32 EAST, N.M.P.M.  
LEA COUNTY, STATE OF NEW MEXICO

MARCH 16, 2015

SURVEY NO. 3783

MADRON SURVEYING, INC. 301 SOUTH CANAL (575) 234-3341 CARLSBAD, NEW MEXICO

SECTION 24, TOWNSHIP 24 SOUTH, RANGE 32 EAST, N.M.P.M.  
LEA COUNTY, STATE OF NEW MEXICO  
VICINITY MAP



DISTANCES IN MILES

NOT TO SCALE

DEVON ENERGY PRODUCTION COMPANY, L.P.

**BELL LAKE "24" FED 7H**

LOCATED 200 FT. FROM THE SOUTH LINE  
AND 1880 FT. FROM THE EAST LINE OF  
SECTION 24, TOWNSHIP 24 SOUTH,  
RANGE 32 EAST, N.M.P.M.  
LEA COUNTY, STATE OF NEW MEXICO

MARCH 16, 2015

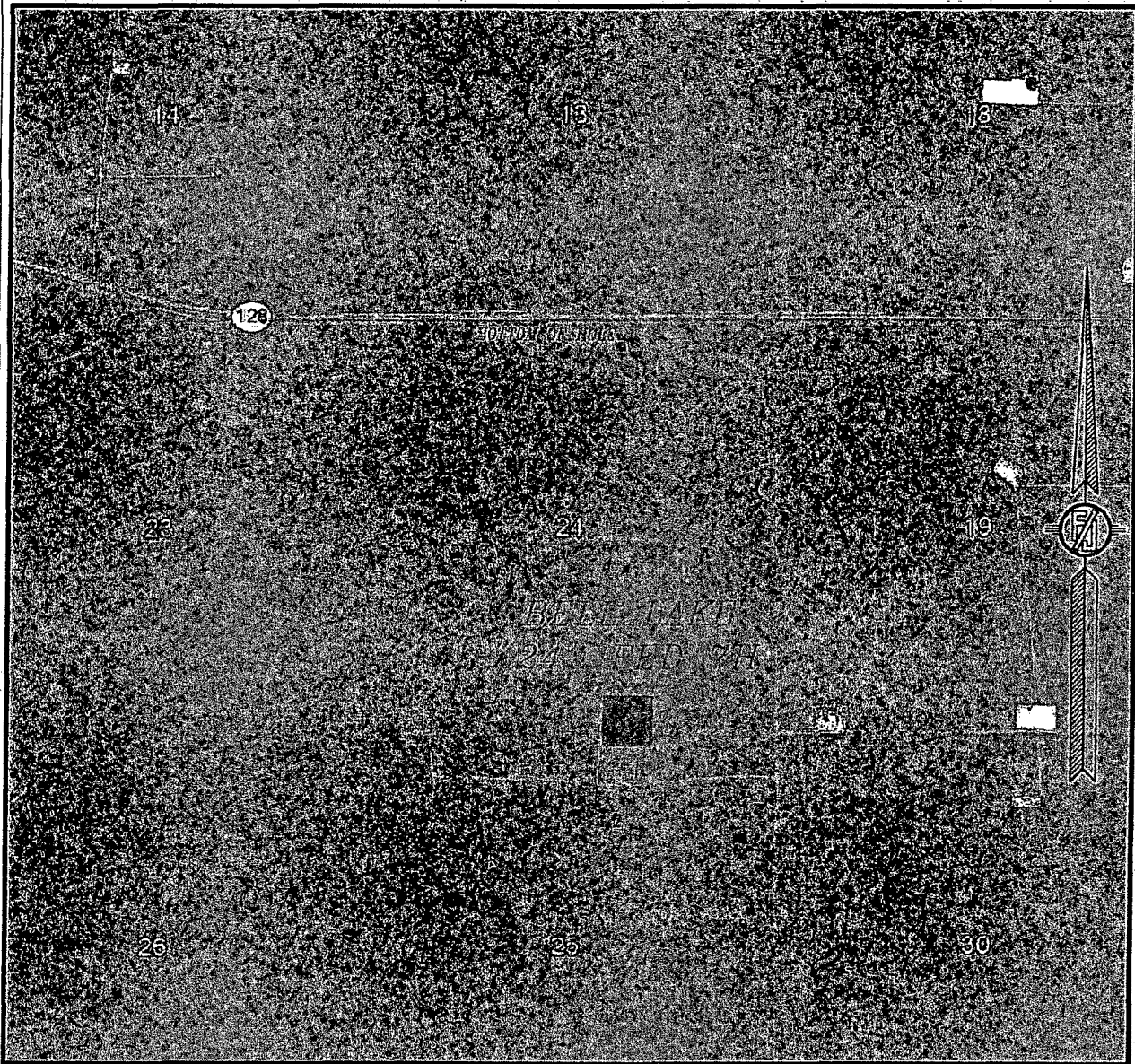
**DIRECTIONS TO LOCATION**

FROM INTERSECTION OF CR 1 (ORLA HIGHWAY) AND STATE HIGHWAY 128. GO APPROX. 3.0 MILES EAST ON STATE HIGHWAY 128 TO A LEASE ROAD ON RIGHT SIDE (SOUTH) OF STATE HIGHWAY 128. TURN RIGHT (SOUTH) AT CATTLE GUARD, GO APPROX. 1.1 MILES TO LEASE ROAD ON RIGHT SIDE (WEST), TURN RIGHT (WEST) GO APPROX. 0.4 OF A MILE. TURN RIGHT (NORTH) GO APPROX. 671' TO EXISTING PAD. TURN RIGHT (EAST) GO APPROX. 143' TO THE SOUTHWEST PAD CORNER FOR THIS LOCATION.

SURVEY NO. 3783

MADRON SURVEYING, INC. 301 SOUTH CANAL (575) 234-3341 CARLSBAD, NEW MEXICO

SECTION 24, TOWNSHIP 24 SOUTH, RANGE 32 EAST, N.M.P.M.  
LEA COUNTY, STATE OF NEW MEXICO  
**AERIAL PHOTO**



NOT TO SCALE  
AERIAL PHOTO:  
GOOGLE EARTH  
FEBRUARY 2014

**DEVON ENERGY PRODUCTION COMPANY, L.P.**

**BELL LAKE "24" FED 7H**

LOCATED 200 FT. FROM THE SOUTH LINE  
AND 1880 FT. FROM THE EAST LINE OF  
SECTION 24, TOWNSHIP 24 SOUTH,  
RANGE 32 EAST, N.M.P.M.  
LEA COUNTY, STATE OF NEW MEXICO

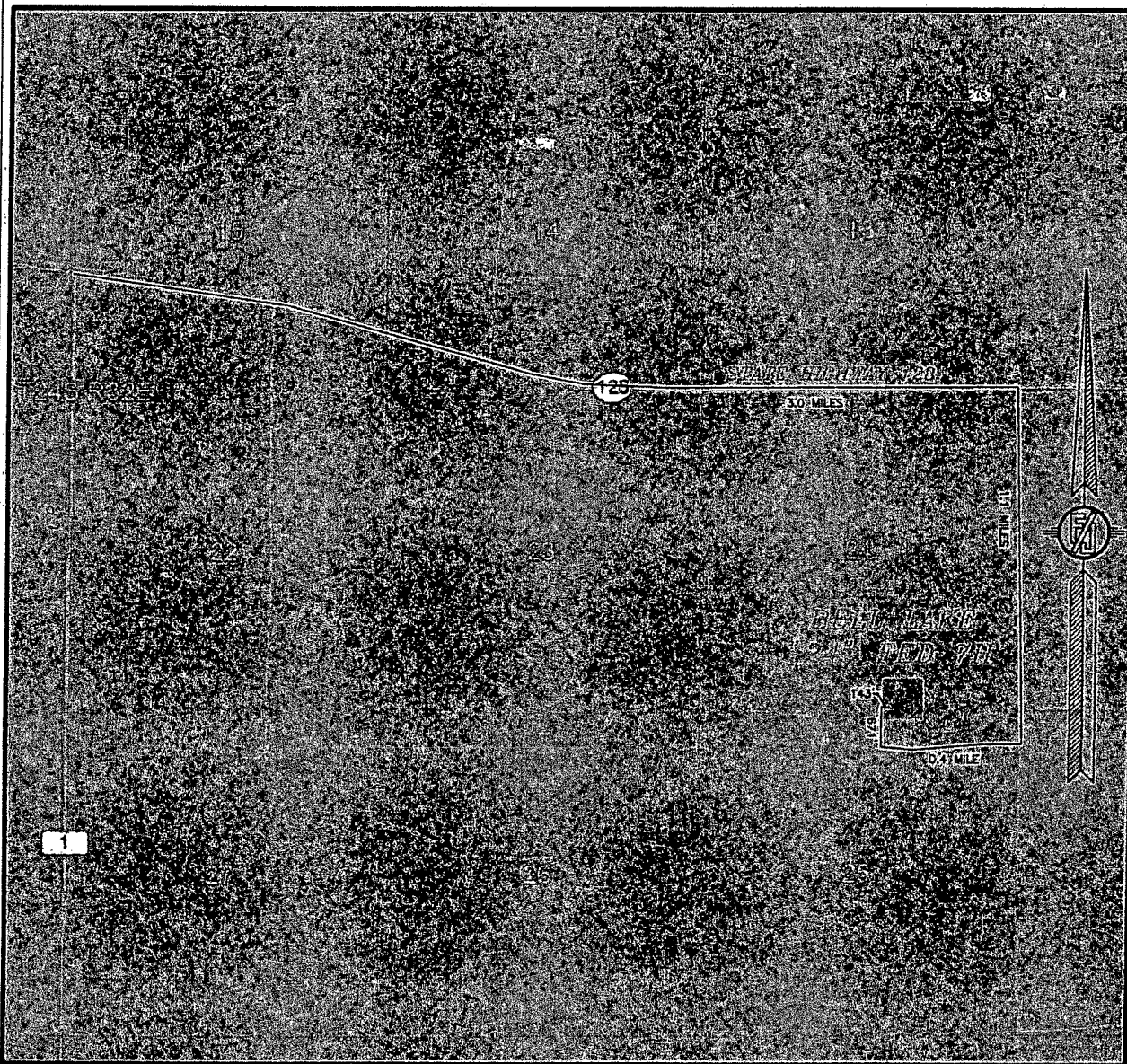
MARCH 16, 2015

SURVEY NO. 3783

MADRON SURVEYING, INC. 301 SOUTH CANAL (575) 234-3341 CARLSBAD, NEW MEXICO



SECTION 24, TOWNSHIP 24 SOUTH, RANGE 32 EAST, N.M.P.M.  
LEA COUNTY, STATE OF NEW MEXICO  
ACCESS AERIAL ROUTE MAP



NOT TO SCALE  
AERIAL PHOTO:  
GOOGLE EARTH  
FEBRUARY 2014

DEVON ENERGY PRODUCTION COMPANY, L.P.

**BELL LAKE "24" FED 7H**

LOCATED 200 FT. FROM THE SOUTH LINE  
AND 1880 FT. FROM THE EAST LINE OF  
SECTION 24, TOWNSHIP 24 SOUTH,  
RANGE 32 EAST, N.M.P.M.  
LEA COUNTY, STATE OF NEW MEXICO

MARCH 16, 2015

SURVEY NO. 3783

MADRON SURVEYING, INC. 301 SOUTH CANAL (575) 234-3341 CARLSBAD, NEW MEXICO

# One Mile Radius Map

## Estimated distances to nearest wellbores:

From SHL: Bell Lake 24 Federal 2H crosses wellbore  
 Bell Lake 24 Federal 3H 90 ft W  
 Bell Lake 24 Federal 4H 145 ft W  
 Dos Equis 13 Federal Com 2H 680 ft NNW  
 From BHL: Bell Lake 24 Federal 3H 120 ft W

24S 32E

23

**devon**

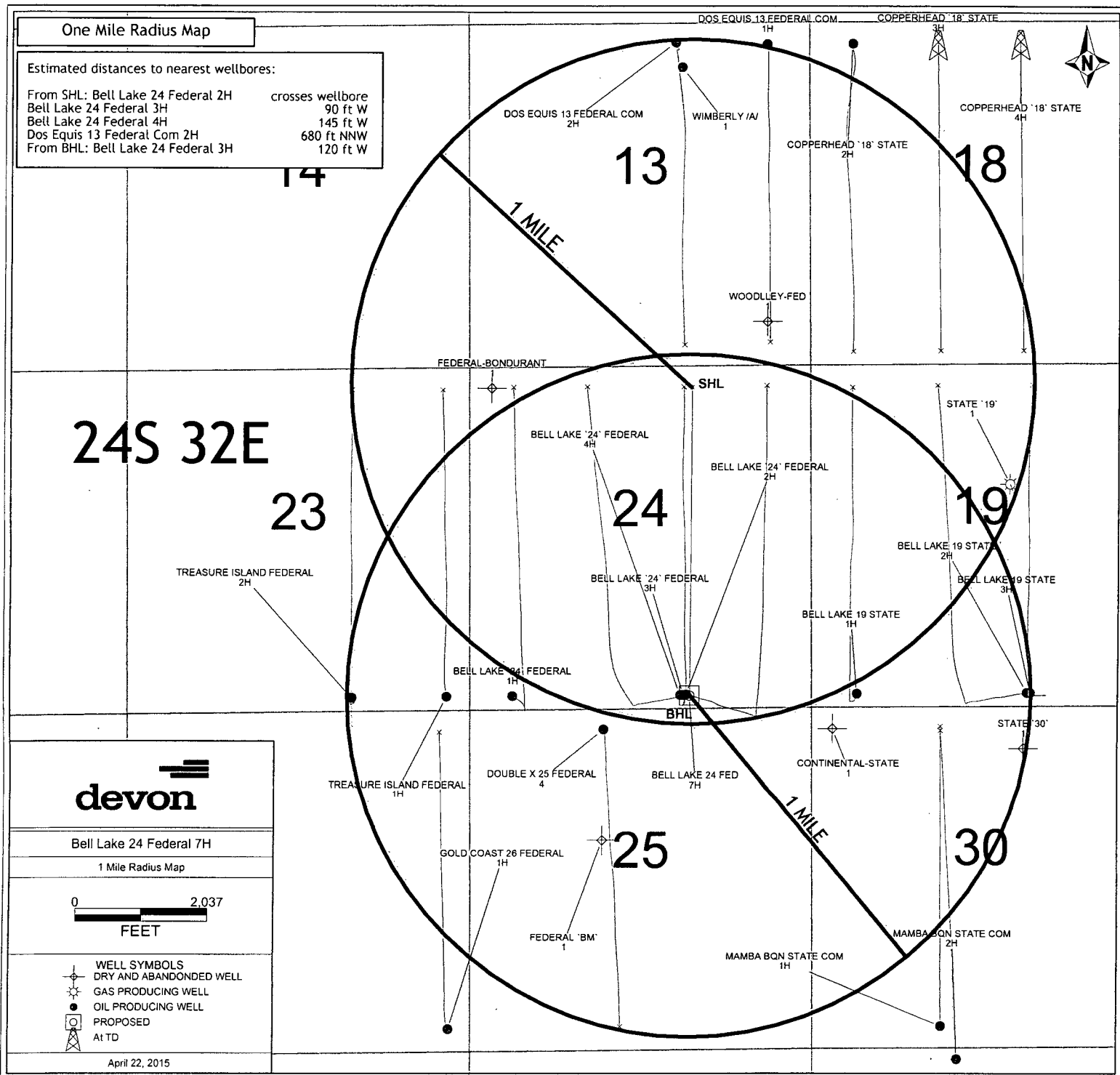
Bell Lake 24 Federal 7H

1 Mile Radius Map

0 2,037  
 FEET

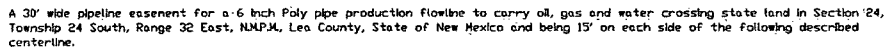
WELL SYMBOLS  
 DRY AND ABANDONED WELL  
 GAS PRODUCING WELL  
 OIL PRODUCING WELL  
 PROPOSED  
 At TD

April 22, 2015



500' 0' 500' 1,000'

SCALE: 1" = 1,000'



Beginning at a point on the North edge of the Bell Lake 24 Fed No. 7H well pad, from which a 1/2 inch iron rod, found for the Southeast corner of said Section 24, bears S 77°51'25" E a distance of 1,916.64 feet.

Beginning at a point on the North edge of the Bell Lake 24 Fed No. 7H well pad, from which a 1/2 inch iron rod, found for the Southwest corner of said Section 24, bears S 77°51'25" E a distance of 1,916.64 feet.

Thence N 01°05'15" W a distance of 31.57 feet, S 89°58'54" W a distance of 208.07 feet.

N 81°24'23" W a distance of 200.02 feet, S 08°53'30" W a distance of 83.20 feet.

S 02°36'32" E a distance of 168.10 feet, S 03°37'04" E a distance of 194.62 feet.

N 89°55'13" W a distance of 366.50 feet, S 89°56'52" W a distance of 1716.98 feet.

N 01°49'01" E a distance of 51.00 feet, S 99°59'40" W a distance of 510.10 feet.

S 00°50'08" E a distance of 257.41 feet, and N 89°55'10" E a distance of 15.00 feet, to a point on the West edge of the Bell Lake 24 Fed No. 1H well pad, from which an iron pipe with a 2 inch brass cap marked "U.S.G.D.S.", found for the Southwest corner of said Section 24, bears S 65°21'39" W a distance of 493.84 feet.

Sold easement being a total of 4,182.10 feet (253.46 rods) in length, containing 2.88 acres.

SW/4 SE/4	1,252.48 feet	75.91 rods	0.86 acres
SE/4 SW/4	1,320.01 feet	80.00 rods	0.91 acres
SW/4 SW/4	1,609.61 feet	97.55 rods	1.11 acres

LLOYD P. SHORT, PS No. 21653 DATE: APRIL 23, 2015

Lloyd P. Shore



NOTE  
THE EDGE OF THE PERMANENT EASEMENT SHALL BE PARALLEL  
WITH THE CENTERLINE OF THE EASEMENT.

BASIS OF BEARING  
ALL BEARINGS AND COORDINATES REFER TO NAD 83, NEW MEXICO  
STATE PLANE COORDINATE SYSTEM, EAST ZONE, U.S. SURVEY  
FEET. (ALL BEARINGS AND DISTANCES ARE GRID MEASUREMENTS.)

**CERTIFICATION**  
I, LLOYD P. SHORT, NEW MEXICO PROFESSIONAL SURVEYOR NO. 21653, DO HEREBY CERTIFY THAT THIS EASEMENT SURVEY PLAT AND THE ACTUAL SURVEY ON THE GROUND UPON WHICH IT IS BASED WERE PERFORMED BY ME OR UNDER MY DIRECT SUPERVISION; THAT I AM RESPONSIBLE FOR THIS SURVEY; THAT THIS SURVEY MEETS THE MINIMUM STANDARDS FOR SURVEYING IN NEW MEXICO; AND THAT IT IS AS TRUE AND CORRECT TO THE BEST OF MY KNOWLEDGE AND BELIEF. I CERTIFY THAT THIS SURVEY IS NOT A LAND DIVISION OR SUBDIVISION AS DEFINED IN THE NEW MEXICO SUBDIVISION ACT AND THAT THIS INSTRUMENT IS AN EASEMENT SURVEY PLAT CROSSING AN EXIST. TRACT OR TRACTS.

LEGEND		B.O.L. - BEGINNING OF LINE	E.O.L. - END OF LINE
---	ROAD WAY	---	EXIST. PPL
-X-X-	FENCE	---	SECTION LINE
---	@ EASEMENT	---	LOT LINE
---	PAD	---	OVERHEAD PWR
---		---	OHP
⊗	PROPERTY MONUMENT	☼	WELL HOLE

devon

BELL LAKE 24 FED No. 7H TO BELL LAKE 24 FED No. 1H

SHEET 1 OF 3	JOB NO.: R3568
--------------	----------------

DRAWN BY: RJR

DWG. NO.

DATE: 04/21/20

R3568-NM-LE-0001.00000

1309 LOUISVILLE AVE.  
MONROE, LA 71201

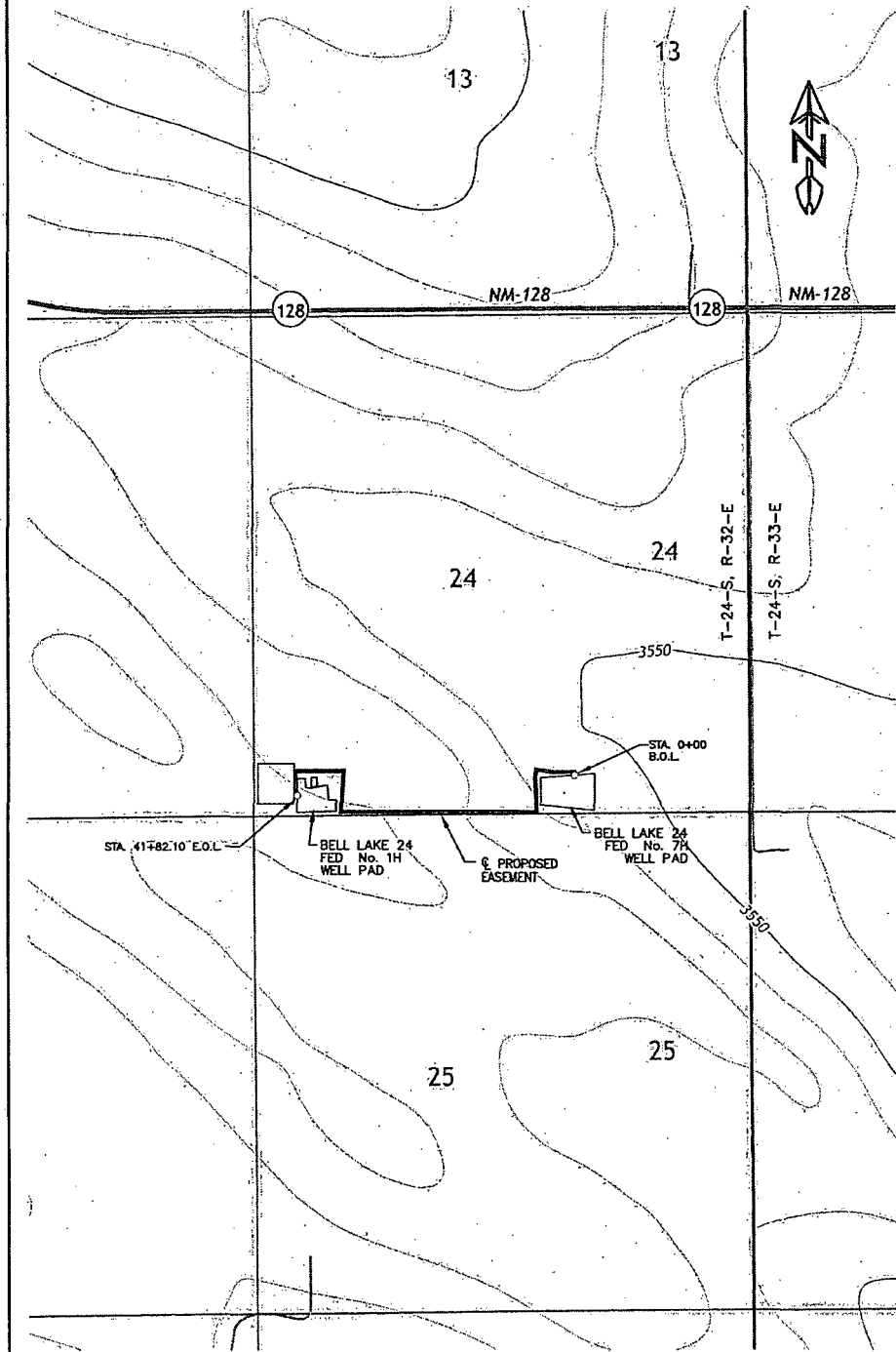


FAX (318) 362-0064



DEVON ENERGY PRODUCTION COMPANY, L.P.  
 BELL LAKE 24 FED No. 7H TO  
 BELL LAKE 24 FED No. 1H BATTERY  
 SECTION 24, T-24-S, R-32-E, N.M.P.M.  
 LEA COUNTY, STATE OF NEW MEXICO

700' 0' 700' 1500'  
 SCALE: 1" = 1500'



LEGEND		B.O.L. - BEGINNING OF LINE	E.O.L. - END OF LINE
---	ROAD WAY	---	EXIST. PPL
-x-x-	FENCE	---	SECTION LINE
-o-o-	EASEMENT	---	LOT LINE
---	PAD	---	OVERHEAD PWR
⊙	PROPERTY MONUMENT	⊙	WELL HOLE

**devon**

BELL LAKE 24 FED No. 7H TO BELL LAKE 24 FED No. 1H

SHEET 2 OF 3	JOB NO.: R3568
DRAWN BY: RJR	DWG. NO.
DATE: 04/21/2015	R3568-NM-LE-TOPO
CHECKED BY: LPS	

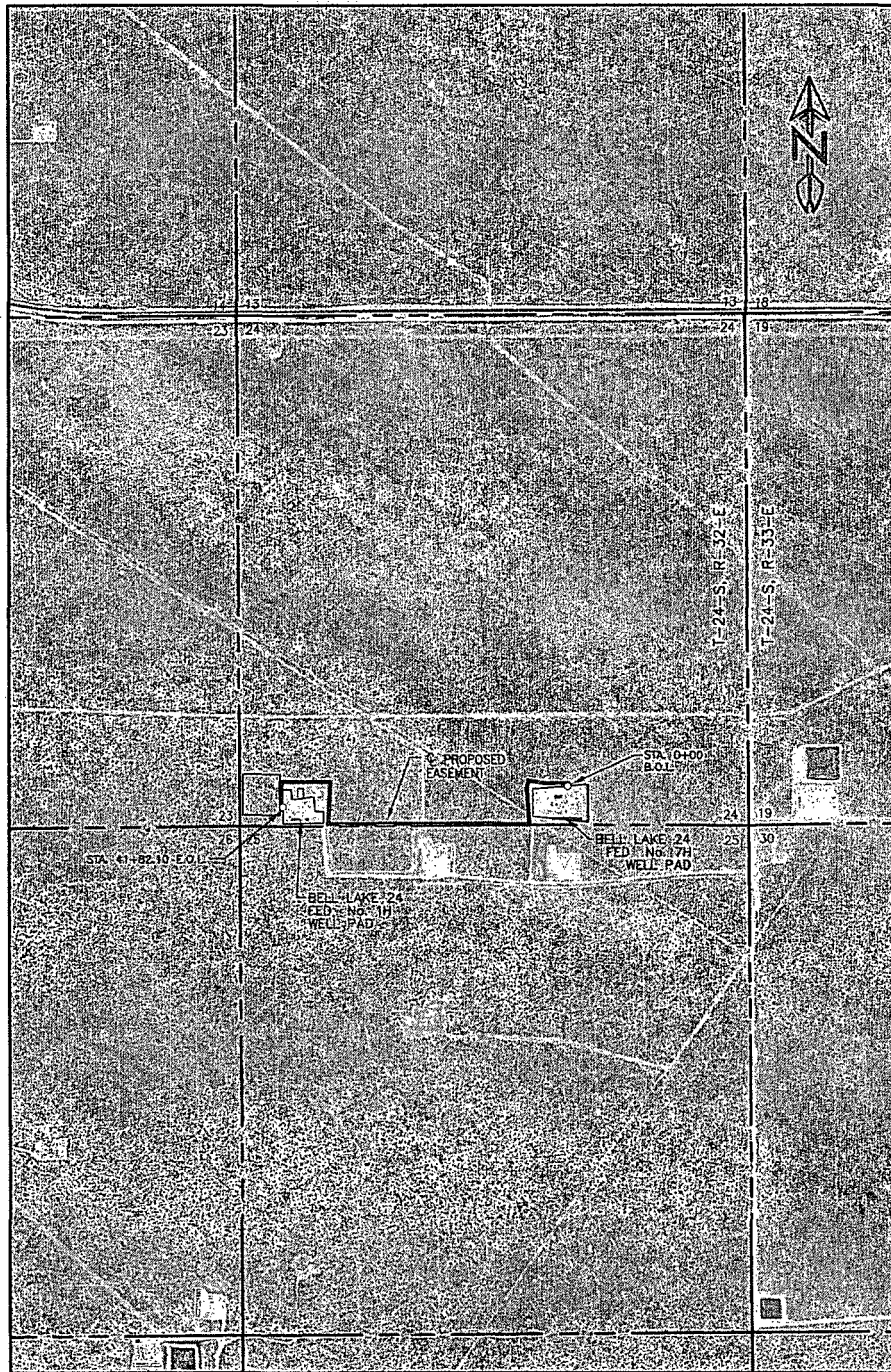
1309 LOUISVILLE AVE.  
 MONROE, LA 71201



(318) 323-6900  
 FAX (318) 362-0064

DEVON ENERGY PRODUCTION COMPANY, L.P.  
 BELL LAKE 24 FED No. 7H TO  
 BELL LAKE 24 FED No. 1H BATTERY  
 SECTION 24, T-24-S, R-32-E, N.M.P.M.  
 LEA COUNTY, STATE OF NEW MEXICO

700' 0' 700' 1500'  
 SCALE: 1" = 1500'



LEGEND		B.O.L. - BEGINNING OF LINE	E.O.L. - END OF LINE
	ROAD WAY		EXIST. PPL
	FENCE		SECTION LINE
	EASEMENT		LOT LINE
	PAD		OVERHEAD PWR
	PROPERTY MONUMENT		WELL HOLE

**devon**

BELL LAKE 24 FED No. 7H TO BELL LAKE 24 FED No. 1H

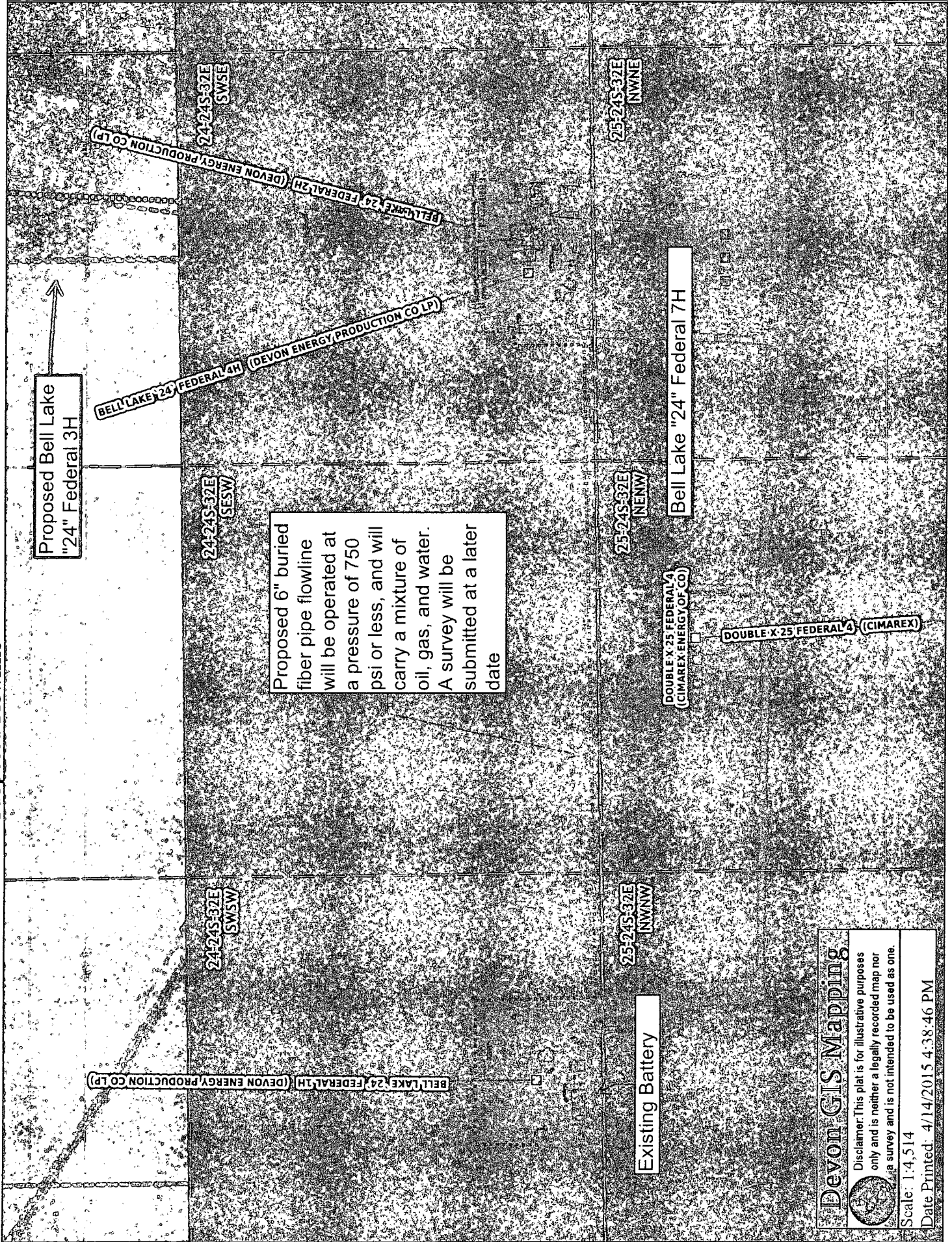
SHEET 2 OF 3	JOB NO.: R3568
DRAWN BY: RJR	DWG. NO.
DATE: 04/21/2015	R3568-NM-LE-NAIP
CHECKED BY: LPS	

1309 LOUISVILLE AVE.  
 MONROE, LA 71201



(318) 323-6900  
 FAX (318) 362-0064

# Proposed Flowline



**Devon GIS Mapping**

Disclaimer: This plat is for illustrative purposes only and is neither a legally recorded map nor a survey and is not intended to be used as one.

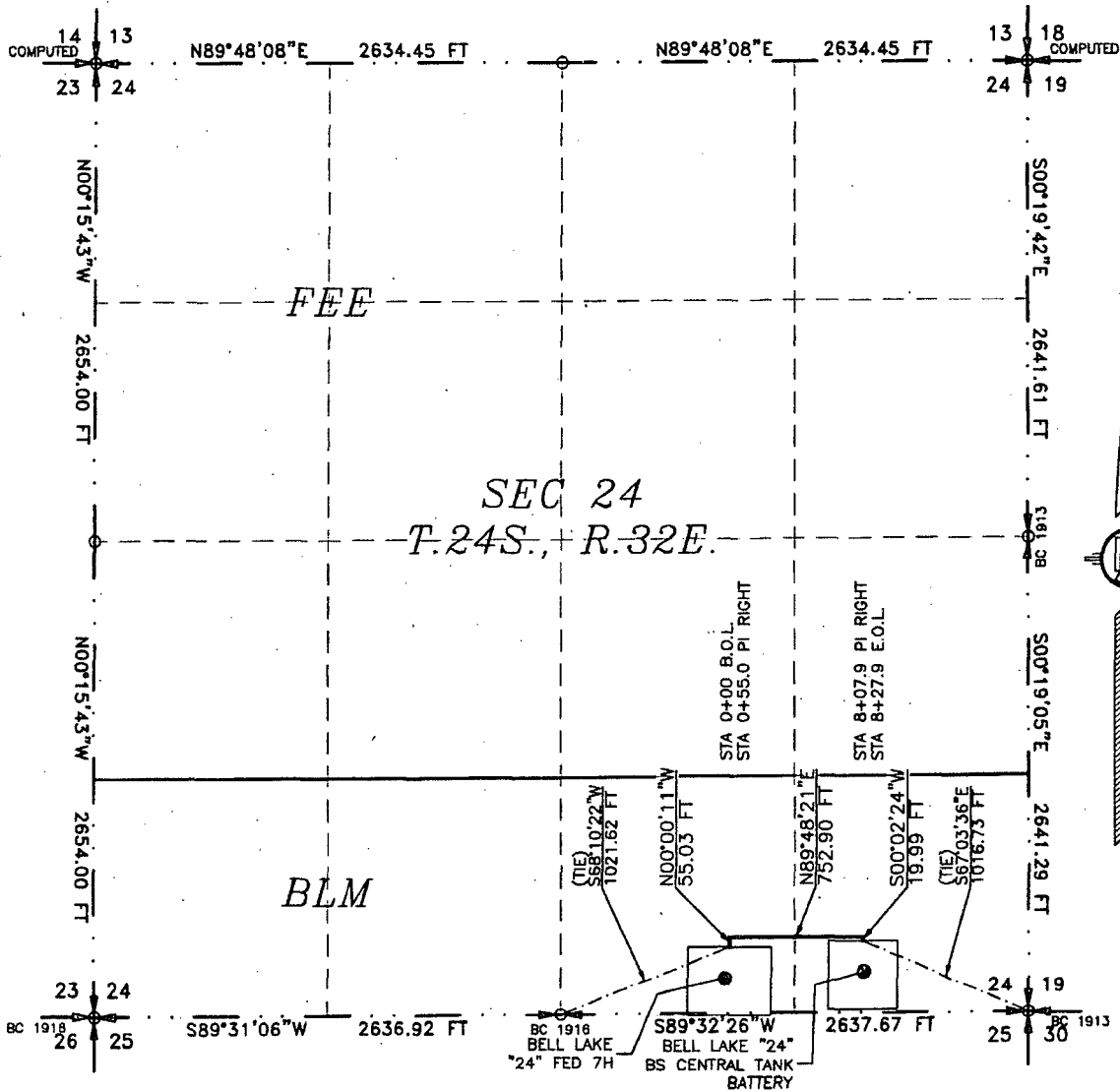
Scale: 1:4,514

Date Printed: 4/14/2015 4:38:46 PM

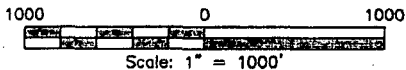
# FLOWLINE PLAT (400631XYZ)

6" POLY FLOWLINE AND A 4" GAS LIFT LINE (IN THE SAME EASEMENT) FROM  
BELL LAKE "24" FED 7H TO BELL LAKE "24" FED BS CENTRAL TANK BATTERY

DEVON ENERGY PRODUCTION COMPANY, L.P.  
CENTERLINE SURVEY OF A PIPELINE CROSSING  
SECTION 24, TOWNSHIP 24 SOUTH, RANGE 32 EAST, N.M.P.M.  
LEA COUNTY, STATE OF NEW MEXICO  
JANUARY 13, 2016



SEE NEXT SHEET (2-4) FOR DESCRIPTION



## GENERAL NOTES

- 1.) THE INTENT OF THIS ROUTE SURVEY IS TO ACQUIRE AN EASEMENT.
- 2.) BASIS OF BEARING IS NMSP EAST MODIFIED TO SURFACE COORDINATES.

## SURVEYOR CERTIFICATE

I, FILIMON F. JARAMILLO, A NEW MEXICO PROFESSIONAL SURVEYOR NO. 12797, HEREBY CERTIFY THAT I HAVE CONDUCTED AND AM RESPONSIBLE FOR THIS SURVEY, THAT THIS SURVEY IS TRUE AND CORRECT TO THE BEST OF MY KNOWLEDGE AND BELIEF, AND THAT THIS SURVEY AND PLAT MEET THE MINIMUM STANDARDS FOR LAND SURVEYING IN THE STATE OF NEW MEXICO.

IN WITNESS WHEREOF, THIS CERTIFICATE IS EXECUTED AT CARLSBAD,

NEW MEXICO, THIS 18 DAY OF JANUARY 2016

*Filimon F. Jaramillo*  
FILIMON F. JARAMILLO, PLS. 12797

MADRON SURVEYING, INC.  
301 SOUTH CANAL  
CARLSBAD, NEW MEXICO 88220  
Phone (575) 234-3341

SHEET: 1-4

MADRON SURVEYING, INC.

301 SOUTH CANAL  
(575) 234-3341

CARLSBAD, NEW MEXICO

SURVEY NO. 4450

**FLOWLINE PLAT (400631XYZ)**

**6" POLY FLOWLINE AND A 4" GAS LIFT LINE (IN THE SAME EASEMENT) FROM  
BELL LAKE "24" FED 7H TO BELL LAKE "24" FED BS CENTRAL TANK BATTERY**

**DEVON ENERGY PRODUCTION COMPANY, L.P.  
CENTERLINE SURVEY OF A PIPELINE CROSSING  
SECTION 24, TOWNSHIP 24 SOUTH, RANGE 32 EAST, N.M.P.M.  
LEA COUNTY, STATE OF NEW MEXICO  
JANUARY 13, 2016**

**DESCRIPTION**

A STRIP OF LAND 30 FEET WIDE CROSSING BUREAU OF LAND MANAGEMENT LAND IN SECTION 24, TOWNSHIP 24 SOUTH, RANGE 32 EAST, N.M.P.M., LEA COUNTY, STATE OF NEW MEXICO AND BEING 15 FEET EACH SIDE OF THE FOLLOWING DESCRIBED CENTERLINE SURVEY:

BEGINNING AT A POINT WITHIN THE SW/4 SE/4 OF SAID SECTION 24, TOWNSHIP 24 SOUTH, RANGE 32 EAST, N.M.P.M., WHENCE THE SOUTH QUARTER CORNER OF SAID SECTION 24, TOWNSHIP 24 SOUTH, RANGE 32 EAST, N.M.P.M. BEARS S68°10'22"W, A DISTANCE OF 1021.62 FEET;  
THENCE N00°00'11"W A DISTANCE OF 55.03 FEET TO AN ANGLE POINT OF THE LINE HEREIN DESCRIBED;  
THENCE N89°48'21"E A DISTANCE OF 752.90 FEET TO AN ANGLE POINT OF THE LINE HEREIN DESCRIBED;  
THENCE S00°02'24"W A DISTANCE OF 19.99 FEET THE TERMINUS OF THIS CENTERLINE SURVEY, WHENCE THE SOUTHEAST CORNER OF SAID SECTION 24, TOWNSHIP 24 SOUTH, RANGE 32 EAST, N.M.P.M. BEARS S67°03'36"E, A DISTANCE OF 1016.73 FEET;

SAID STRIP OF LAND BEING 827.91 FEET OR 50.18 RODS IN LENGTH, CONTAINING 0.570 ACRES MORE OR LESS AND BEING ALLOCATED BY FORTIES AS FOLLOWS:

SW/4 SE/4	423.17 L.F.	25.65 RODS	0.291 ACRES
SE/4 SE/4	404.74 L.F.	24.53 RODS	0.279 ACRES

**SURVEYOR CERTIFICATE**

I, FILIMON F. JARAMILLO, A NEW MEXICO PROFESSIONAL SURVEYOR NO. 12797, HEREBY CERTIFY THAT I HAVE CONDUCTED AND AM RESPONSIBLE FOR THIS SURVEY, THAT THIS SURVEY IS TRUE AND CORRECT TO THE BEST OF MY KNOWLEDGE AND BELIEF, AND THAT THIS SURVEY AND PLAT MEET THE MINIMUM STANDARDS FOR LAND SURVEYING IN THE STATE OF NEW MEXICO.

IN WITNESS WHEREOF, THIS CERTIFICATE IS EXECUTED AT CARLSBAD,

NEW MEXICO, THIS 18 DAY OF JANUARY 2016

**GENERAL NOTES**

1.) THE INTENT OF THIS ROUTE SURVEY IS TO ACQUIRE AN EASEMENT.

2.) BASIS OF BEARING IS NMSP EAST MODIFIED TO SURFACE COORDINATES.

MADRON SURVEYING, INC.  
301 SOUTH CANAL  
CARLSBAD, NEW MEXICO 88220  
Phone (575) 234-3341

**SHEET: 2-4**

**MADRON SURVEYING, INC. CARLSBAD, NEW MEXICO**

**SURVEY NO. 4450**



**FLOWLINE PLAT (400631XYZ)**

6" POLY FLOWLINE AND A 4" GAS LIFT LINE (IN THE SAME EASEMENT) FROM  
BELL LAKE "24" FED 7H TO BELL LAKE "24" FED BS CENTRAL TANK BATTERY

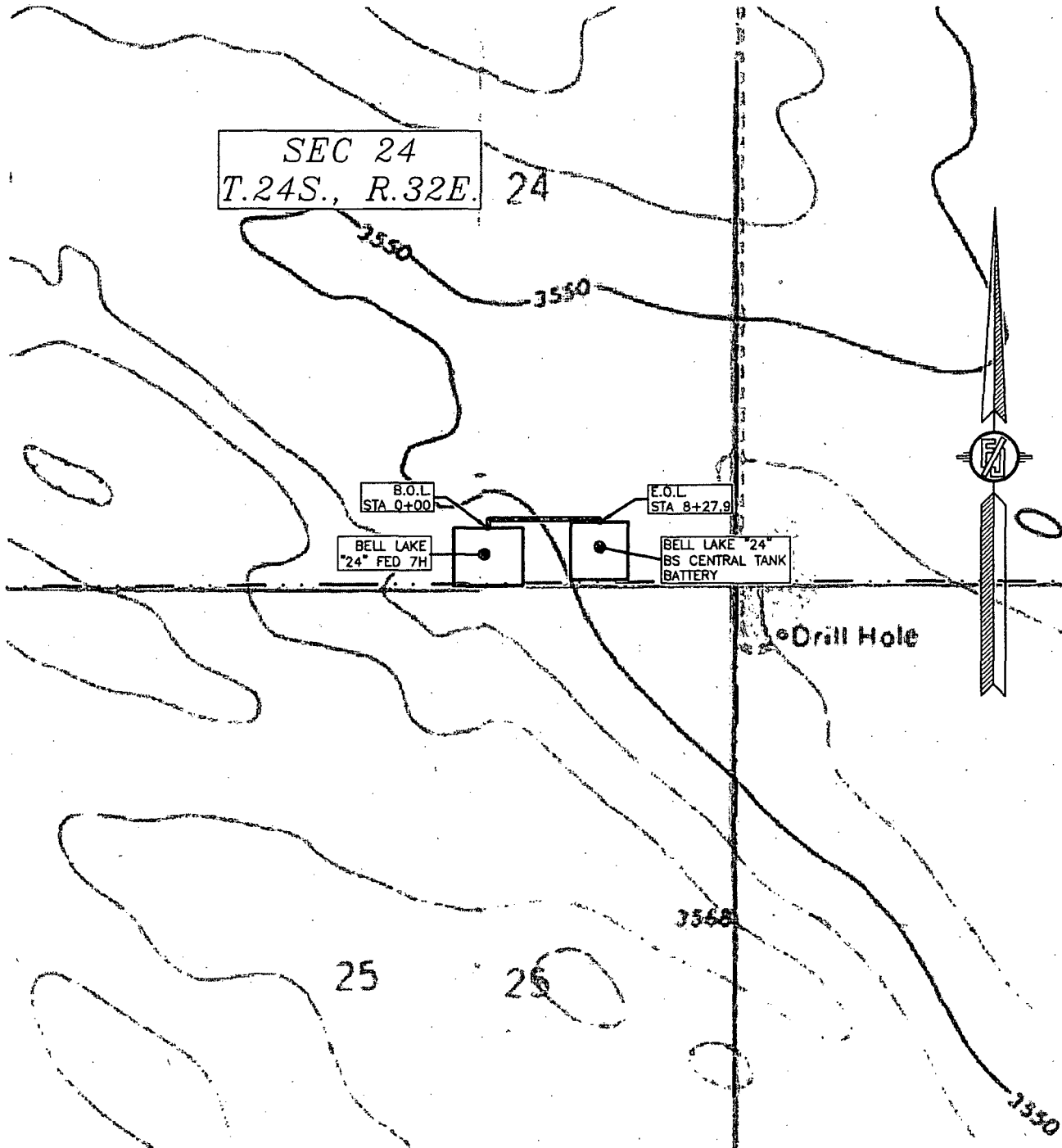
**DEVON ENERGY PRODUCTION COMPANY, L.P.**

CENTERLINE SURVEY OF A PIPELINE CROSSING

SECTION 24, TOWNSHIP 24 SOUTH, RANGE 32 EAST, N.M.P.M.

LEA COUNTY, STATE OF NEW MEXICO

JANUARY 13, 2016



SHEET: 3-4

MADRON SURVEYING, INC.

301 SOUTH CANAL  
(575) 234-3341

CARLSBAD, NEW MEXICO

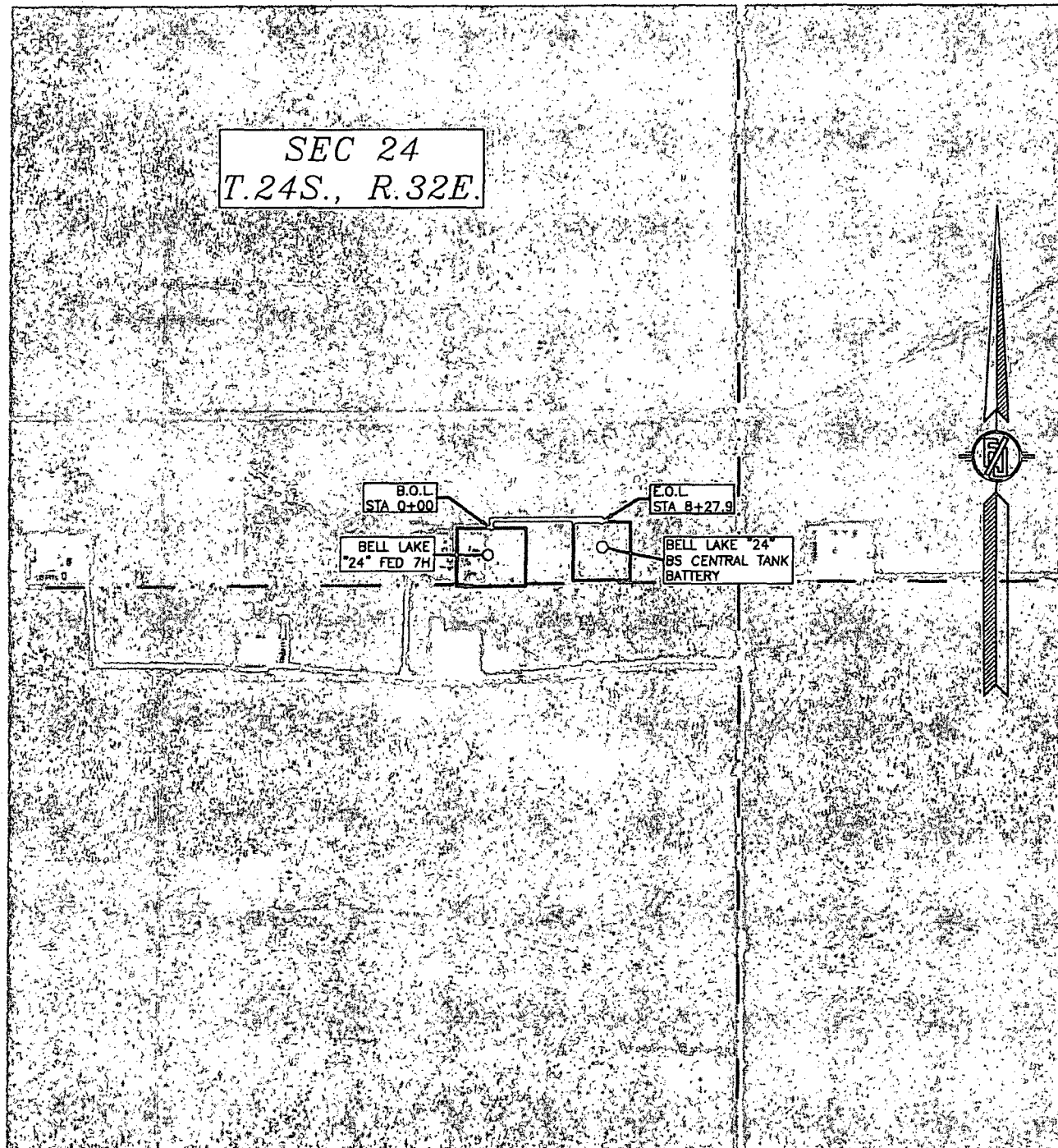
SURVEY NO. 4450



**FLOWLINE PLAT (400631XYZ)**

6" POLY FLOWLINE AND A 4" GAS LIFT LINE (IN THE SAME EASEMENT) FROM  
BELL LAKE "24" FED 7H TO BELL LAKE "24" FED BS CENTRAL TANK BATTERY

DEVON ENERGY PRODUCTION COMPANY, L.P.  
CENTERLINE SURVEY OF A PIPELINE CROSSING  
SECTION 24, TOWNSHIP 24 SOUTH, RANGE 32 EAST, N.M.P.M.  
LEA COUNTY, STATE OF NEW MEXICO  
JANUARY 13, 2016



SHEET: 4-4

MADRON SURVEYING, INC. 301 SOUTH CANAL (575) 234-3341 CARLSBAD, NEW MEXICO

SURVEY NO. 4450