

HOBBS OCD

Form 3160-3
(March 2012)

APR 29 2016

RECEIVED

CONFIDENTIAL

OCD Hobbs

UNITED STATES
DEPARTMENT OF THE INTERIOR
BUREAU OF LAND MANAGEMENT

APPLICATION FOR PERMIT TO DRILL OR REENTER

FORM APPROVED
OMB No. 1004-0137
Expires October 31, 2014

5. Lease Serial No.
NMNM116574

6. If Indian, Allottee or Tribe Name

7. If Unit or CA Agreement, Name and No.

8. Lease Name and Well No.
Bell Lake 24 Fed 6H (39911)

9. API Well No.
30-028-43201

10. Field and Pool, or Exploratory (97964)
WC-025 G07 5243225C; Lower Bone Spring

11. Sec., T. R. M. or Blk. and Survey or Area
Sec 23-T24S-R32E

12. County or Parish
Lea

13. State
NM

1a. Type of work: ☒ DRILL ☐ REENTER

1b. Type of Well: ☒ Oil Well ☐ Gas Well ☐ Other ☒ Single Zone ☐ Multiple Zone

2. Name of Operator
Devon Energy Production Company, L.P. (6137)

3a. Address
333 West Sheridan Avenue
Oklahoma City, OK 73102-5010

3b. Phone No. (include area code)
405-552-6558

4. Location of Well (Report location clearly and in accordance with any State requirements.)

At surface Unit P, 230' FSL 950' FEL

PP: 930' FSL, 350' FWL

At proposed prod. zone Unit A, 330' FNL 350' FEL

14. Distance in miles and direction from nearest town or post office*
Approximately 26 miles NW of Jal, NM

15. Distance from proposed*
location to nearest
property or lease line, ft.
(Also to nearest drig. unit line, if any)
See attached map

16. No. of acres in lease
680 Acres

17. Spacing Unit dedicated to this well
160 Acres

18. Distance from proposed location*
to nearest well, drilling, completed,
applied for, on this lease, ft.
See attached map

19. Proposed Depth
14,263' MD / 9740' TVD

20. BLM/BIA Bond No. on file
CO-1104; NBM-000801

21. Elevations (Show whether DF, KDB, RT, GL, etc.)
3547.4' GL

22. Approximate date work will start*
8/7/2016

23. Estimated duration
45 Days

Pad shared with Bell Lake 24 Fed 10H

24. Attachments

The following, completed in accordance with the requirements of Onshore Oil and Gas Order No. 1, must be attached to this form:

1. Well plat certified by a registered surveyor.
2. A Drilling Plan.
3. A Surface Use Plan (if the location is on National Forest System Lands, the SUPO must be filed with the appropriate Forest Service Office).
4. Bond to cover the operations unless covered by an existing bond on file (see Item 20 above).
5. Operator certification
6. Such other site specific information and/or plans as may be required by the BLM.

25. Signature
Linda Good

Name (Printed/Typed)
Linda Good

Date
8/26/2015

Title
Regulatory Compliance Specialist

Approved by (Signature)
/s/George MacDonell

Name (Printed/Typed)

Date
APR 26 2016

Title
FIELD MANAGER

Office

CARLSBAD FIELD OFFICE

Application approval does not warrant or certify that the applicant holds legal or equitable title to those rights in the subject lease which would entitle the applicant to conduct operations thereon.
Conditions of approval, if any, are attached.

APPROVAL FOR TWO YEARS

Title 18 U.S.C. Section 1001 and Title 43 U.S.C. Section 1212, make it a crime for any person knowingly and willfully to make to any department or agency of the United States any false, fictitious or fraudulent statements or representations as to any matter within its jurisdiction.

(Continued on page 2)

*(Instructions on page 2)

Carlsbad Controlled Water Basin

See attached NMOCD
Conditions of Approval

Approval Subject to General Requirements
& Special Stipulations Attached

SEE ATTACHED FOR
CONDITIONS OF APPROVAL

MAY 03 2016

Devon Energy, Bell Lake 24 Fed 6H

1. Geologic Formations

TVD of target	9,740'	Pilot hole depth	N/A
MD at TD:	14,263'	Deepest expected fresh water:	

Basin

Formation	Depth (TVD) from KB	Water/Mineral Bearing/ Target Zone?	Hazards*
Rustler	1,140		
Top of Salt	1,465		
Base of Salt	4,940		
Delaware	5,042		
Cherry Canyon	6,014		
Brushy Canyon	7,476		
Madera	8,635		
1 st Bone Spring Lime	9,045		
U Leonard Shale	9,230		
Base U Leonard Shale	9,460		
M Leonard Shale	9,540		
Base M Leonard Shale	9,775		

*H₂S, water flows, loss of circulation, abnormal pressures, etc.

2. Casing Program

See COA

Hole Size	Casing Interval		Csg. Size	Weight (lbs)	Grade	Conn	SF Collapse	SF Burst	SF Tension
	From	To							
17.5"	0	1,440' // 40'	13.375"	48	H-40	STC	1.29	2.90	8.35
12.25"	0	4,300'	9.625"	40	J-55	BTC	1.15	3.43	4.69
12.25"	4,300'	5,200' 4940'	9.625"	40	HCK-55	BTC	1.57	4.63	6.07
8.75"	0	14,263'	5.5"	17	P-110	BTC	1.42	1.25	2.07
7" x 5.5" Option									
8.75"	0	9,150'	7"	29	P-110	BTC	1.78	1.25	2.16
8.75"	9,150'	14,263'	5.5"	17	P-110	BTC	1.42	1.25	2.07
BLM Minimum Safety Factor							1.125	1.00	1.6 Dry 1.8 Wet

All casing strings will be tested in accordance with Onshore Oil and Gas Order #2 III.B.1.h

Must have table for contingency casing

	Y or N
Is casing new? If used, attach certification as required in Onshore Order #1	Y
Does casing meet API specifications? If no, attach casing specification sheet.	Y
Is premium or uncommon casing planned? If yes attach casing specification sheet.	N
Does the above casing design meet or exceed BLM's minimum standards? If not provide justification (loading assumptions, casing design criteria).	Y
Will the intermediate pipe be kept at a minimum 1/3 fluid filled to avoid approaching the collapse pressure rating of the casing?	Y
Is well located within Capitan Reef?	N
If yes, does production casing cement tie back a minimum of 50' above the Reef?	
Is well within the designated 4 string boundary.	
Is well located in SOPA but not in R-111-P?	N
If yes, are the first 2 strings cemented to surface and 3 rd string cement tied back 500' into previous casing?	
Is well located in R-111-P and SOPA?	N
If yes, are the first three strings cemented to surface?	
Is 2 nd string set 100' to 600' below the base of salt?	
Is well located in high Cave/Karst?	N
If yes, are there two strings cemented to surface?	
(For 2 string wells) If yes, is there a contingency casing if lost circulation occurs?	
Is well located in critical Cave/Karst?	N
If yes, are there three strings cemented to surface?	

3. Cementing Program

Casing	# Sks	Wt. lb/ gal	H ₂ O gal/sk	Yld ft/ sack	500# Comp. Strength (hours)	Slurry Description
13-3/8" Surface	760	13.5	9.28	1.74	10	Lead: Class C Cement + 4% Gel + 1% Calcium Chloride + 0.125 lbs/sack Poly-E-Flake
	550	14.8	6.32	1.33	6	Tail: Class C Cement + 0.125 lbs/sack Poly-E-Flake
9-5/8" Inter.	1080	12.9	9.81	1.85	14	Lead: (65:35) Class C Cement: Poz (Fly Ash): 6% BWOC Bentonite + 5% BWOW Sodium Chloride + 0.125 lbs/sack Poly-E-Flake
	430	14.8	6.32	1.33	6	Tail: Class C Cement + 0.125 lbs/sack Poly-E-Flake
7 x 5-1/2" Combo Prod.	260	10.4	16.9	3.17	16	Lead: Tuned Light [®] + 0.125 lb/sk Pol-E-Flake
	1320	14.5	5.31	1.2	25	Tail: (50:50) Class H Cement: Poz (Fly Ash) + 0.5% bwoc HALAD-344 + 0.4% bwoc CFR-3 + 0.2% BWOC HR-601 + 2% bwoc Bentonite
7 x 5-1/2" Combo Prod. Two Stage	250	10.4	16.9	3.17	16	1 st Stage Lead: Tuned Light [®] + 0.125 lb/sk Pol-E-Flake
	1320	14.5	5.31	1.2	25	1 st Stage Tail: (50:50) Class H Cement: Poz (Fly Ash) + 0.5% bwoc HALAD-344 + 0.4% bwoc CFR-3 + 0.2% BWOC HR-601 + 2% bwoc Bentonite
	DV Tool = 5250ft 4990' (50' below previous shoe)					
	10	10.4	16.9	3.17	16	2 nd Stage Lead: Tuned Light [®] + 0.125 lb/sk Pol-E-Flake
	20	14.8	6.32	1.33	6	2 nd Stage Tail: Class C Cement + 0.125 lbs/sack Poly-E-Flake
5-1/2" Prod Two Stage	550	11.9	12.89	2.31	n/a	1 st Stage Lead: (50:50) Class H Cement: Poz (Fly Ash) + 10% BWOC Bentonite + 1 lb/sk of Kol-Seal + 0.3% BWOC HR-601 + 0.5lb/sk D-Air 5000
	1330	14.5	5.31	1.2	25	1 st Stage Tail: (50:50) Class H Cement: Poz (Fly Ash) + 0.5% bwoc HALAD-344 + 0.4% bwoc CFR-3 + 0.2% BWOC HR-601 + 2% bwoc Bentonite
	DV Tool = 5250ft 4990' (50' below previous shoe)					
	20	11	14.81	2.55	22	2 nd Stage Lead: Tuned Light [®] Cement + 0.125 lb/sk Pol-E-Flake
	30	14.8	6.32	1.33	6	2 nd Stage Tail: Class C Cement + 0.125 lbs/sack Poly-E-Flake
5-1/2" Prod Single Stage	310	11.9	12.89	2.31	n/a	1 st Lead: (50:50) Class H Cement: Poz (Fly Ash) + 10% BWOC Bentonite + 1 lb/sk of Kol-Seal + 0.3% BWOC HR-601 + 0.5lb/sk D-Air 5000
	330	12.5	10.86	1.96	30	2 nd Lead: (65:35) Class H Cement: Poz (Fly Ash) + 6% BWOC Bentonite + 0.25% BWOC HR-601 + 0.125 lbs/sack Poly-E-Flake
	1330	14.5	5.31	1.2	25	Tail: (50:50) Class H Cement: Poz (Fly Ash) + 0.5% bwoc HALAD-344 + 0.4% bwoc CFR-3 + 0.2% BWOC HR-601 + 2% bwoc Bentonite

See
COA

Devon Energy, Bell Lake 24 Fed 6H

DV tool depth(s) will be adjusted based on hole conditions and cement volumes will be adjusted proportionally. DV tool will be set a minimum of 50 feet below previous casing and a minimum of 200 feet above current shoe. Lab reports with the 500 psi compressive strength time for the cement will be onsite for review.

Casing String	TOC	% Excess
13-3/8" Surface	0'	100%
9-5/8" Intermediate	0'	75%
7 x 5-1/2" Production Casing	5000'	25%
7 x 5-1/2" Production Casing Two Stage Option	1 st Stage = 5250ft / 2 nd Stage = 5000' 4740'	25%
5-1/2" Production Casing Two Stage Option	1 st Stage = 5200ft / 2 nd Stage = 5000' 4740'	25%
5-1/2" Production Casing Single Stage Option	5000'	25%

See COA

4. Pressure Control Equipment

N	A variance is requested for the use of a diverter on the surface casing. See attached for schematic.
---	--

BOP installed and tested before drilling which hole?	Size?	Min. Required WP	Type	✓	Tested to:
12-1/4"	13-5/8"	3M	Annular	x	50% of working pressure 3M
			Blind Ram		
			Pipe Ram		
			Double Ram	x	
			Other*		
8-3/4"	13-5/8"	3M	Annular	x	50% testing pressure 3M
			Blind Ram		
			Pipe Ram		
			Double Ram	x	
			Other*		
			Annular		
			Blind Ram		
			Pipe Ram		
			Double Ram		
			Other*		

*Specify if additional ram is utilized.

BOP/BOPE will be tested by an independent service company to 250 psi low and the high pressure indicated above per Onshore Order 2 requirements. The System may be upgraded to a higher pressure but still tested to the working pressure listed in the table above. If the system is upgraded all the components installed will be functional and tested.

Pipe rams will be operationally checked each 24 hour period. Blind rams will be operationally checked on each trip out of the hole. These checks will be noted on the daily tour sheets. Other accessories to the BOP equipment will include a Kelly cock and floor safety valve (inside BOP) and choke lines and choke manifold. See attached schematics.

Y	Formation integrity test will be performed per Onshore Order #2. On Exploratory wells or on that portion of any well approved for a 5M BOPE system or greater, a pressure integrity test of each casing shoe shall be performed. Will be tested in accordance with Onshore Oil and Gas Order #2 III.B.1.i.
Y	A variance is requested for the use of a flexible choke line from the BOP to Choke Manifold. See attached for specs and hydrostatic test chart.
Y	Are anchors required by manufacturer?
Y	<p>A multibowl wellhead may be being used. The BOP will be tested per Onshore Order #2 after installation on the surface casing which will cover testing requirements for a maximum of 30 days. If any seal subject to test pressure is broken the system must be tested.</p> <p>Devon may use a multi-bowl wellhead assembly (FMC Uni-head). This assembly will only be tested when installed on the surface casing. Minimum working pressure of the blowout preventer (BOP) and related equipment (BOPE) required for drilling below the surface casing shoe shall be 3000 (3M) psi.</p> <ul style="list-style-type: none"> Wellhead will be installed by FMC's representatives. If the welding is performed by a third party, the FMC's representative will monitor the temperature to verify that it does not exceed the maximum temperature of the seal. Wellhead representative will install the test plug for the initial BOP test. The wellhead company will install a solid steel body pack-off to completely isolate the lower head after cementing intermediate casing. After installation of the pack-off, the pack-off and the lower flange will be tested to 5M, as shown on the attached schematic. Everything above the pack-off will not have been altered whatsoever from the initial nipple up. Therefore the BOP components will not be retested at that time. If the cement does not circulate and one inch operations would have been possible with a standard wellhead, the well head will be cut and top out operations will be conducted. Devon will pressure test all seals above and below the mandrel (but still above the casing) to full working pressure rating. Devon will test the casing to 0.22 psi/ft or 1500 psi, whichever is greater, as per Onshore Order #2. <p>After running the 13-3/8" surface casing, a 13-5/8" BOP/BOPE system with a minimum rating of 3M will be installed on the Uni-head wellhead system and will undergo a 250 psi low pressure test followed by a 3,000 psi high pressure test. The 3,000 psi high and 250 psi low test will cover testing requirements a maximum of 30 days, as per Onshore</p>

See
CORA

See
CORA

<p>Order #2. If the well is not complete within 30 days of this BOP test, another full BOP test will be conducted, as per Onshore Order #2.</p> <p>After running the 9-5/8' intermediate casing with a mandrel hanger, the 13-5/8" BOP/BOPE system with a minimum rating of 3M will already be installed on the FMC Uni-head.</p> <p>The pipe rams will be operated and checked each 24 hour period and each time the drill pipe is out of the hole. These tests will be logged in the daily driller's log. A 2" kill line and 3" choke line will be incorporated into the drilling spool below the ram BOP. In addition to the rams and annular preventer, additional BOP accessories include a kelly cock, floor safety valve, choke lines, and choke manifold rated at 3,000 psi WP.</p> <p>Devon requests a variance to use a flexible line with flanged ends between the BOP and the choke manifold (choke line). The line will be kept as straight as possible with minimal turns</p> <p>See attached schematic.</p>
--

5. Mud Program

See
cont

Depth		Type	Weight (ppg)	Viscosity	Water Loss
From	To				
0	1,440' 1140'	FW Gel	8.6-8.8	28-34	N/C
1,440'	5,200' 4940'	Saturated Brine	10.0-10.2	28-34	N/C
5,200'	14,263'	Cut Brine	8.5-9.3	28-34	N/C

Sufficient mud materials to maintain mud properties and meet minimum lost circulation and weight increase requirements will be kept on location at all times.

What will be used to monitor the loss or gain of fluid?	PVT/Pason/Visual Monitoring
---	-----------------------------

6. Logging and Testing Procedures

Logging, Coring and Testing	
x	Will run GR/CNL from TD to surface (horizontal well – vertical portion of hole). Stated logs run will be in the Completion Report and submitted to the BLM.
	No Logs are planned based on well control or offset log information.
	Drill stem test? If yes, explain
	Coring? If yes, explain

Additional logs planned	Interval
Resistivity	Int. shoe to KOP
Density	Int. shoe to KOP
X CBL	Production casing
X Mud log	Intermediate shoe to TD
PEX	

7. Drilling Conditions

Condition	Specify what type and where?
BH Pressure at deepest TVD	4734 psi
Abnormal Temperature	No

Mitigation measure for abnormal conditions. Describe. Lost circulation material/sweeps/mud scavengers.

Hydrogen Sulfide (H₂S) monitors will be installed prior to drilling out the surface shoe. If H₂S is detected in concentrations greater than 100 ppm, the operator will comply with the provisions of Onshore Oil and Gas Order #6. If Hydrogen Sulfide is encountered, measured values and formations will be provided to the BLM.

N	H ₂ S is present
Y	H ₂ S Plan attached

8. Other facets of operation

Is this a walking operation? No.

Will be pre-setting casing? No.

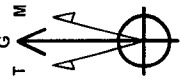
Attachments

☒ Directional Plan

☐ Other, describe

DEVON ENERGY

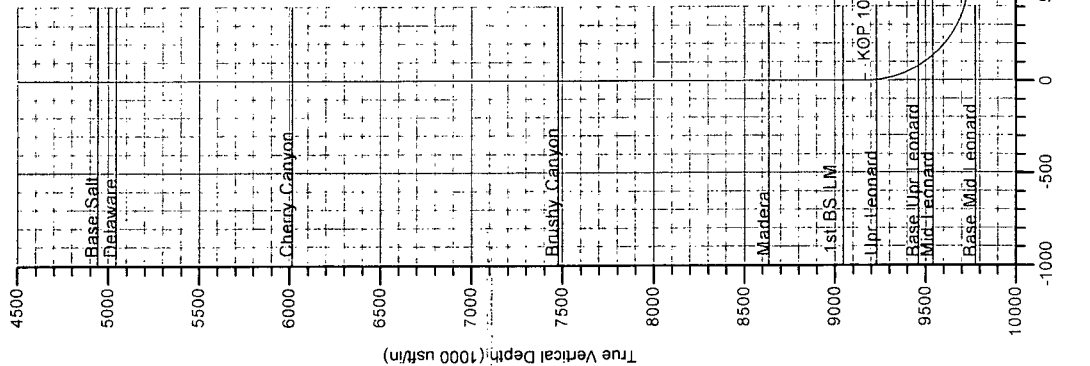
Project: Lea County, NM (NAD-83)
 Site: Bell Lake 24 Fed
 Well: 6H
 Wellbore: OH
 Design: Plan #1



Azimuths to Grid North
 True North: -0.38°
 Magnetic North: 5.90°
 Strength: 48187.7nT
 Dip Angle: 60.11°
 Date: 7/20/2015
 Model: BGGM2015

PROJECT DETAILS: Lea County, NM (NAD-83)
 Geodetic System: US State Plane 1983
 Datum: North American Datum 1983
 Ellipsoid: GRS 1980
 Zone: New Mexico Eastern Zone

devon



DESIGN TARGET DETAILS

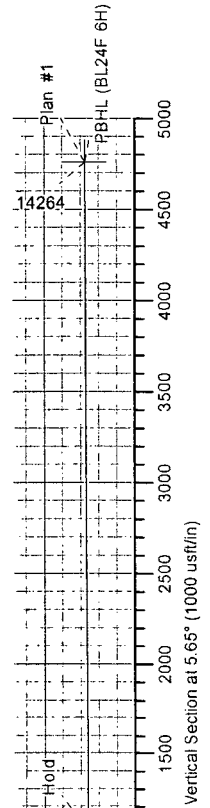
Name	TVD	+N/S	+E/W	Northing	Easting	Latitude	Longitude
SHL (BL24F 6H)	0.00	0.00	0.00	435661.95	761095.68	32° 11' 47.548 N	103° 37' 22.429 W
PBHL (BL24F 6H)	9725.00	4728.18	573.26	440690.13	761668.94	32° 12' 34.297 N	103° 37' 15.393 W

SECTION DETAILS

Sec	MD	Inc	Azi	TVD	+N/S	+E/W	Dleg	TFace	Vsect	Annotation
1	0.00	0.00	0.00	0.00	0.00	0.00	0.00	0.00	0.00	KOP 10° DLS
2	9169.03	0.00	0.00	9169.03	0.00	0.00	0.00	0.00	0.00	LP 1/1.5° Turn
3	10071.33	90.23	13.00	9741.98	560.51	129.40	10.00	13.00	570.53	Hold
4	10561.32	90.23	5.65	9740.00	1043.70	208.75	1.50	-89.97	1059.18	TD
5	14263.82	90.23	5.65	9725.00	4728.18	573.26	0.00	0.00	4761.65	

FORMATION TOP DETAILS

TVDPath	MDPath	Formation	DipAngle	DipDir
1140.00	1140.00	Rustler	0.00	
1465.00	1465.00	Top Salt	0.00	
4940.00	4940.00	Base Salt	0.00	
5042.00	5042.00	Delaware	0.00	
6014.00	6014.00	Cherry Canyon	0.00	
7476.00	7476.00	Brushy Canyon	0.00	
8635.00	8635.00	Madera	0.00	
9045.00	9045.00	1st BS LM	0.00	
9230.00	9230.12	Upr Leonard	0.00	
9460.00	9474.23	Base Upr Leonard	0.00	
9540.00	9572.54	Mid Leonard	0.00	



LEAM
 Drilling Systems, Inc.

LEAM DRILLING SYSTEMS LLC
 2010 East Davis, Conroe, Texas 77301
 Phone: 936/756-7577, Fax 936/756-7595

Plan: Plan #1 (SH/OH)
 Bell Lake 24 Fed
 Created By: Brady Deaver
 Date: 10/10, July 20 2015
 Approved: _____
 Date: _____