

# HOBBS OCD

District I  
1625 N. French Dr., Hobbs, NM 88240  
Phone: (575) 393-6161 Fax: (575) 393-0720  
District II  
811 S. First St., Artesia, NM 88210  
Phone: (575) 748-1283 Fax: (575) 748-9720  
District III  
1000 Rio Brazos Road, Aztec, NM 87410  
Phone: (505) 334-6178 Fax: (505) 334-6170  
District IV  
1220 S. St. Francis Dr., Santa Fe, NM 87505  
Phone: (505) 476-3460 Fax: (505) 476-3462

State of New Mexico  
Energy, Minerals & Natural Resources Department  
OIL CONSERVATION DIVISION  
1220 South St. Francis Dr.  
Santa Fe, NM 87505

APR 29 2016

Form C-102  
Revised August 1, 2011  
Submit one copy to appropriate  
District Office

RECEIVED

☐ AMENDED REPORT

## WELL LOCATION AND ACREAGE DEDICATION PLAT

1 API Number <b>30-025 43196</b>		2 Pool Code <b>97933</b>		3 Pool Name <b>WC-025 G-07 S233204D; Bone Spring</b>	
4 Property Code <b>3/6/63</b>		5 Property Name <b>BIG CAT 16-9 STATE FED COM</b>			6 Well Number <b>1H</b>
7 OGRID No. <b>6137</b>		8 Operator Name <b>DEVON ENERGY PRODUCTION COMPANY, L.P.</b>			9 Elevation <b>3670.9</b>

### 10 Surface Location

UL or lot no.	Section	Township	Range	Lot Idn	Feet from the	North/South line	Feet from the	East/West line	County
<b>E</b>	<b>16</b>	<b>23 S</b>	<b>32 E</b>		<b>2590</b>	<b>NORTH</b>	<b>614</b>	<b>WEST</b>	<b>LEA</b>

### 11 Bottom Hole Location If Different From Surface

UL or lot no.	Section	Township	Range	Lot Idn	Feet from the	North/South line	Feet from the	East/West line	County
<b>D</b>	<b>9</b>	<b>23 S</b>	<b>32 E</b>		<b>330</b>	<b>NORTH</b>	<b>660</b>	<b>WEST</b>	<b>LEA</b>

12 Dedicated Acres	13 Joint or Infill	14 Consolidation Code	15 Order No.
<b>240 ac</b>			

No allowable will be assigned to this completion until all interests have been consolidated or a non-standard unit has been approved by the division.

### 17 OPERATOR CERTIFICATION

I hereby certify that the information contained herein is true and complete to the best of my knowledge and belief, and that this organization either owns a working interest or undivided mineral interest in the land including the proposed bottom hole location or has a right to drill this well at this location pursuant to a contract with an owner of such a mineral or working interest, or to a voluntary pooling agreement or a compulsory pooling order heretofore entered by the division.

*Trina C. Couch* 3/3/15  
Signature Date

Trina C. Couch, Regulatory Analyst  
Printed Name

trina.couch@dmv.com  
E-mail Address

### 18 SURVEYOR CERTIFICATION

I hereby certify that the well location shown on this plat was plotted from field notes of actual surveys made by me or under my supervision and that the same is true and correct to the best of my belief.

*William F. Jaramillo*  
Signature and Seal of Professional Surveyor

12797  
Certificate Number: WILLIAM F. JARAMILLO, PLS 12797

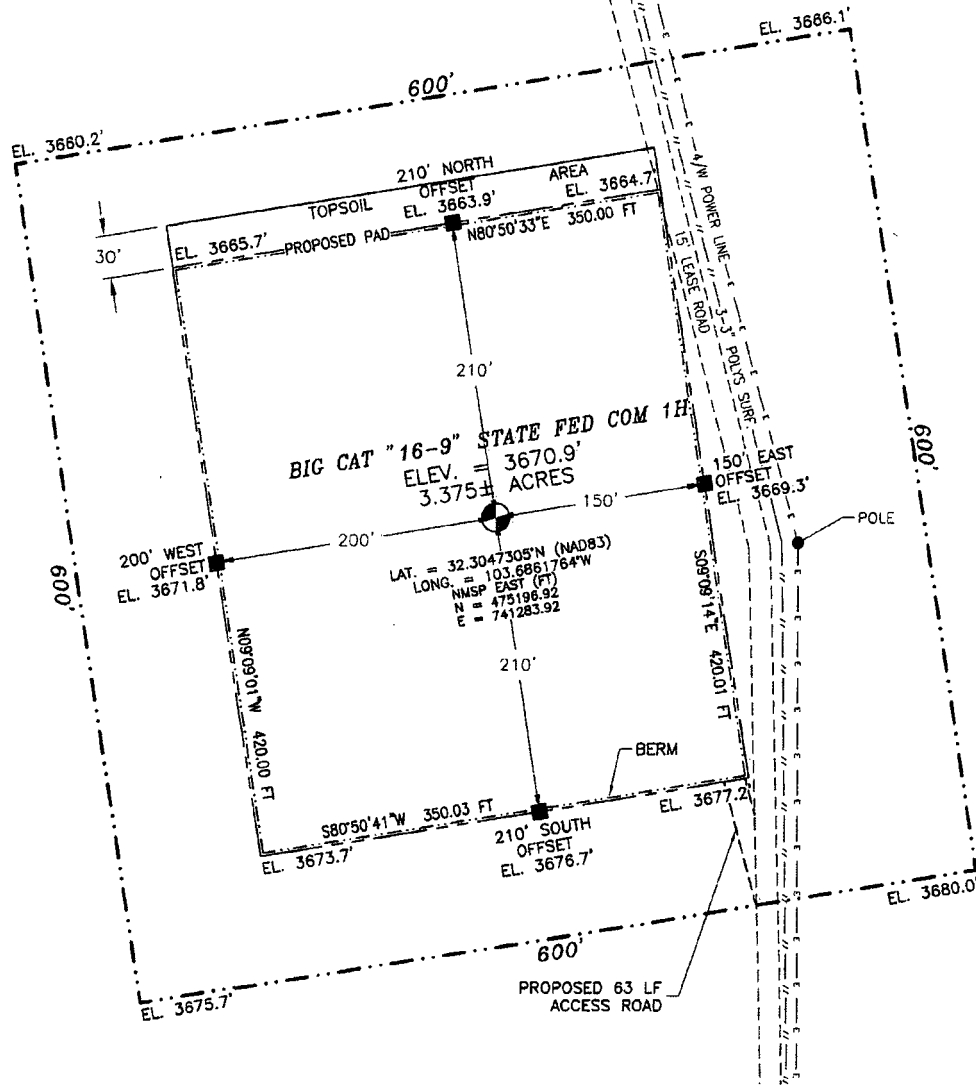
SURVEY NO. 3639

MAY 03 2016

SECTION 16, TOWNSHIP 23 SOUTH, RANGE 32 EAST, N.M.P.M.  
LEA COUNTY, STATE OF NEW MEXICO

SITE MAP

NOTE: LATITUDE AND LONGITUDE COORDINATES ARE SHOWN USING THE NORTH AMERICAN DATUM OF 1983 (NAD83). LISTED NEW MEXICO STATE PLANE EAST COORDINATES ARE GRID (NAD83). BASIS OF BEARING AND DISTANCES USED ARE NEW MEXICO STATE PLANE EAST COORDINATES MODIFIED TO THE SURFACE



0 12 60 120 240

SCALE 1" = 120'

DIRECTIONS TO LOCATION

FROM THE INTERSECTION OF STATE HIGHWAY 128 AND RED ROAD (CR 798) GO NORTH ON RED ROAD APPROX. 3.5 MILES TO A LEASE ROAD ON RIGHT (EAST) TURN EAST GO APPROX. 2.1 MILES, ROAD TURNS RIGHT (SOUTH) GO SOUTH APPROX. 0.5 MILES, ROAD TURNS LEFT (EAST) GO EAST APPROX. 1.1 MILES TO A LEASE ROAD ON LEFT (NORTH) TURN NORTH GO APPROX. 0.3 MILES, TURN NORTH GO APPROX. 63' TO THE SOUTHEAST PAD CORNER FOR THIS LOCATION.

DEVON ENERGY PRODUCTION COMPANY, L.P.  
**BIG CAT "16-9" STATE FED COM 1H**  
LOCATED 2590 FT. FROM THE NORTH LINE  
AND 614 FT. FROM THE WEST LINE OF  
SECTION 16, TOWNSHIP 23 SOUTH,  
RANGE 32 EAST, N.M.P.M.  
LEA COUNTY, STATE OF NEW MEXICO

JANUARY 24, 2015

SURVEY NO. 3639

MADRON SURVEYING, INC. 301 SOUTH CANAL (575) 234-3341 CARLSBAD, NEW MEXICO

Topographic map showing a grid with elevations (3590, 3654, 3687, 3683, 3653, 3656, 3587, 3670, 3559, 3675) and contour lines. A black square is located near the center. A dashed line runs diagonally from the bottom left to the top right. A solid line runs horizontally across the middle. A vertical line runs along the right edge. A north arrow is in the top right corner. Labels include "Oil Well", "Shop Well", "Boo 1", and "BIG CAT '16-9' STATE FED COM 1H".

**NOT TO SCALE**

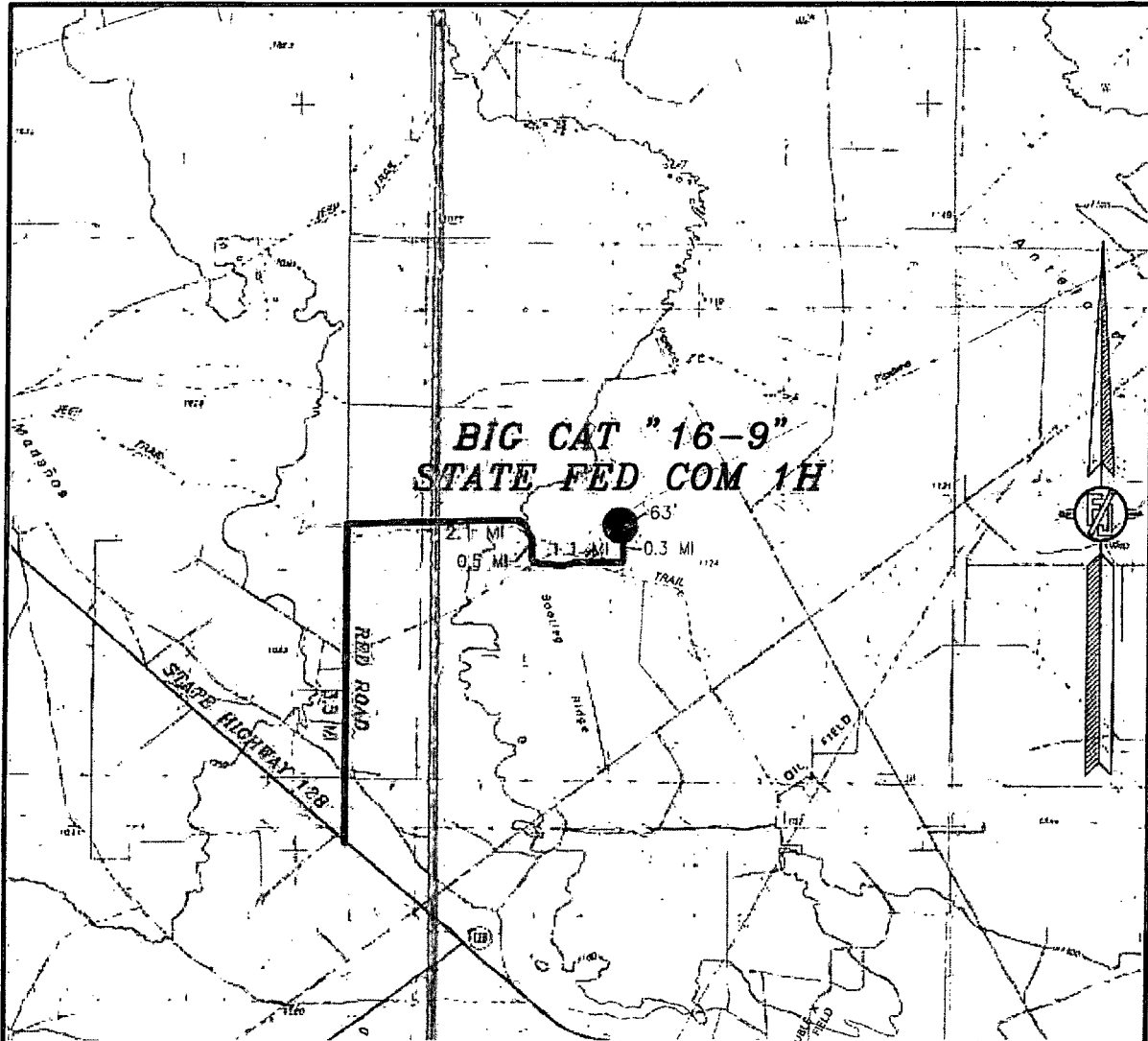
JANUARY 24, 2015

301 SOUTH CANAL  
(575) 234-3341

CARLSBAD, NEW MEXICO

*SURVEY NO. 3639*

SECTION 16, TOWNSHIP 23 SOUTH, RANGE 32 EAST, N.M.P.M.  
LEA COUNTY, STATE OF NEW MEXICO  
VICINITY MAP



DISTANCES IN MILES

NOT TO SCALE

DEVON ENERGY PRODUCTION COMPANY, L.P.

**BIG CAT "16-9" STATE FED COM 1H**

LOCATED 2590 FT. FROM THE NORTH LINE

AND 614 FT. FROM THE WEST LINE OF

SECTION 16, TOWNSHIP 23 SOUTH,

RANGE 32 EAST, N.M.P.M.

LEA COUNTY, STATE OF NEW MEXICO

**DIRECTIONS TO LOCATION**

FROM THE INTERSECTION OF STATE HIGHWAY 128 AND RED ROAD (CR 798) GO NORTH ON RED ROAD APPROX. 3.5 MILES TO A LEASE ROAD ON RIGHT (EAST) TURN EAST GO APPROX. 2.1 MILES, ROAD TURNS RIGHT (SOUTH) GO SOUTH APPROX. 0.5 MILES, ROAD TURNS LEFT (EAST) GO EAST APPROX. 1.1 MILES TO A LEASE ROAD ON LEFT (NORTH) TURN NORTH GO APPROX. 0.3 MILES, TURN NORTH GO APPROX. 63' TO THE SOUTHEAST PAD CORNER FOR THIS LOCATION.

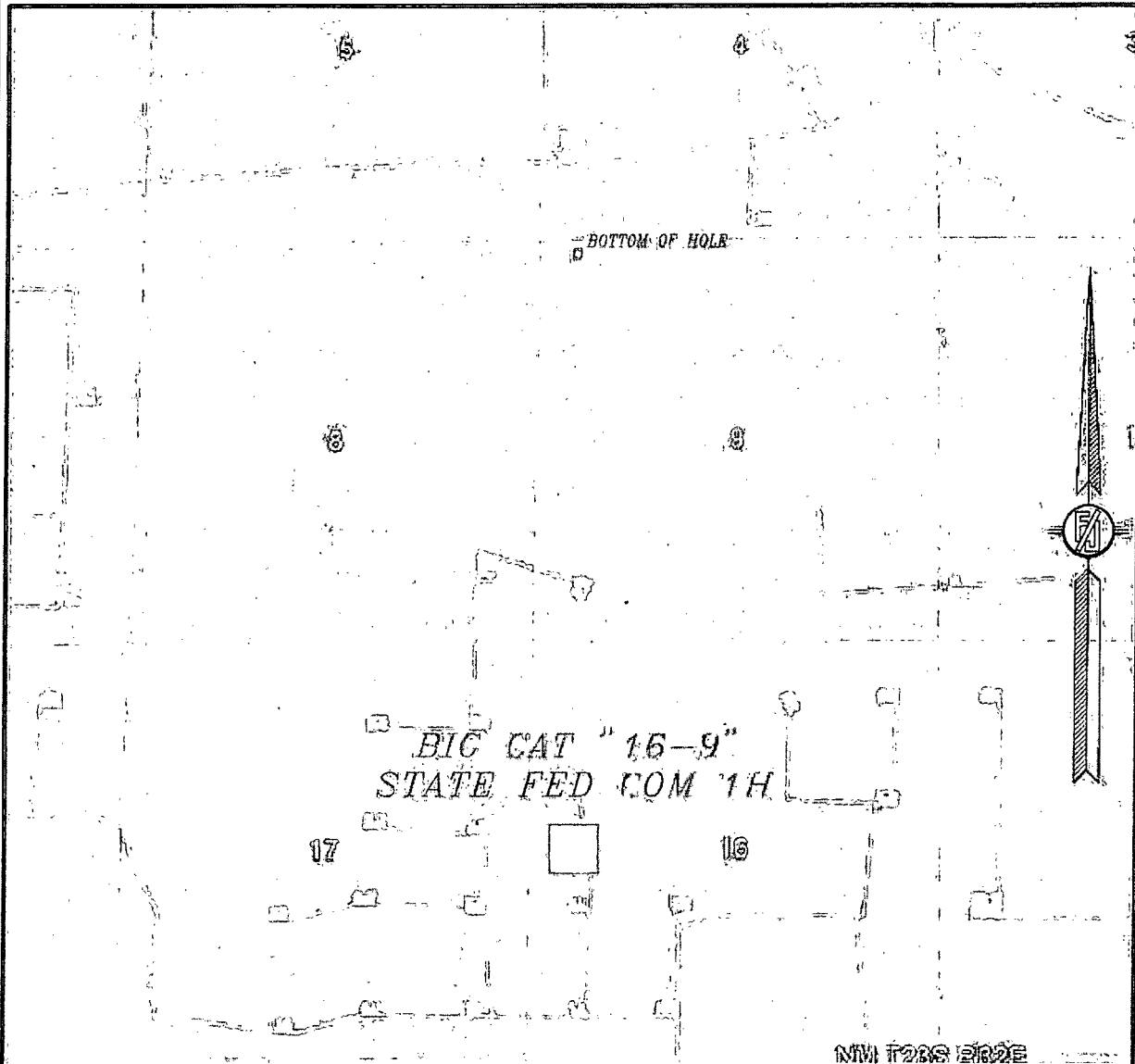
JANUARY 24, 2015

SURVEY NO. 3639

MADRON SURVEYING, INC. 301 SOUTH CANAL CARLSBAD, NEW MEXICO  
(575) 234-3341

SECTION 16, TOWNSHIP 23 SOUTH, RANGE 32 EAST, N.M.P.M.  
LEA COUNTY, STATE OF NEW MEXICO

## AERIAL PHOTO



NOT TO SCALE  
AERIAL PHOTO:  
GOOGLE EARTH  
FEBRUARY 2014

**DEVON ENERGY PRODUCTION COMPANY, L.P.**

**BIG CAT "16-9" STATE FED COM 1H**

LOCATED 2590 FT. FROM THE NORTH LINE

AND 614 FT. FROM THE WEST LINE OF

SECTION 16, TOWNSHIP 23 SOUTH,

RANGE 32 EAST, N.M.P.M.

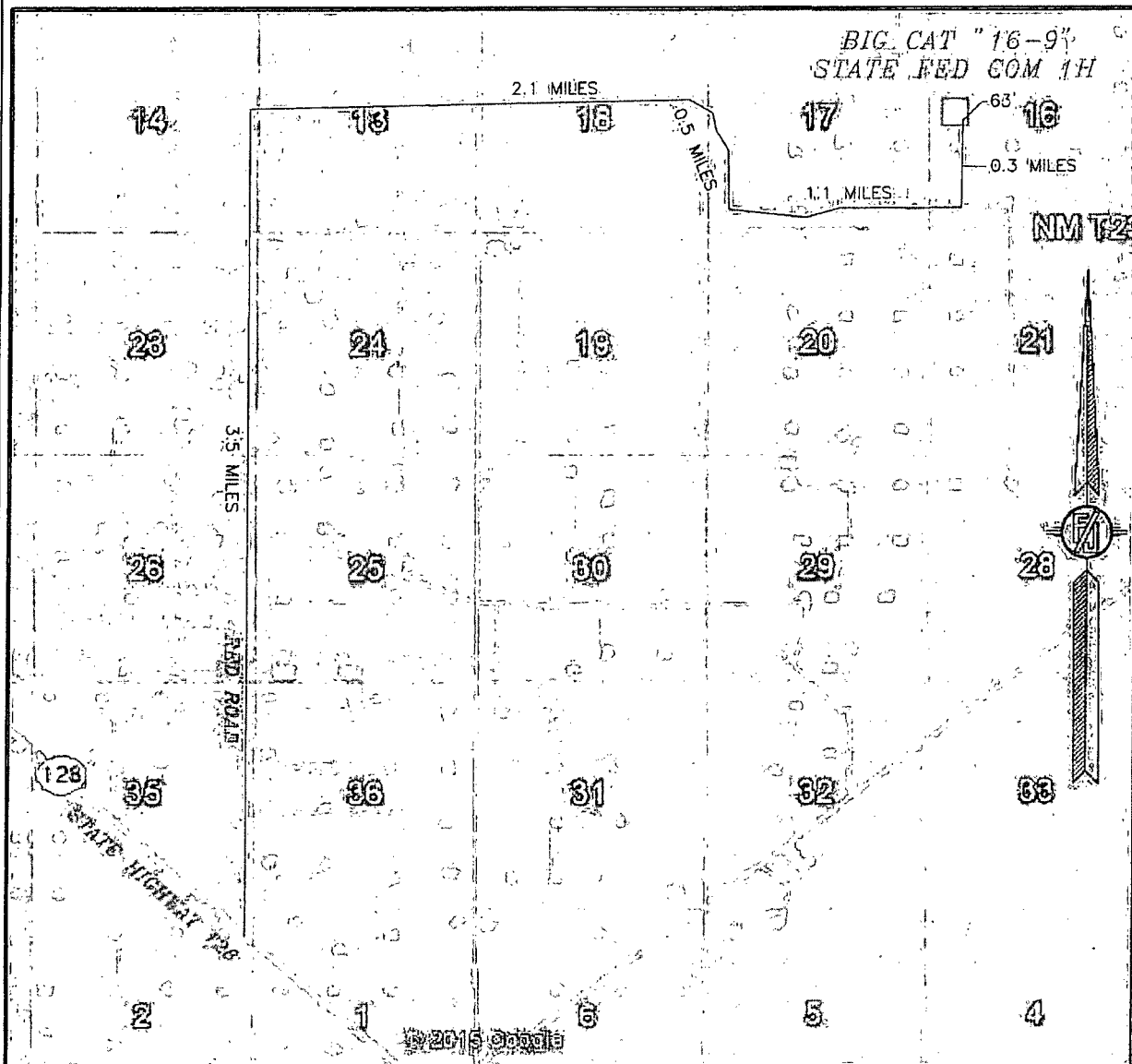
LEA COUNTY, STATE OF NEW MEXICO

JANUARY 24, 2015

SURVEY NO. 3639

MADRON SURVEYING, INC. 301 SOUTH CANAL CARLSBAD, NEW MEXICO  
(575) 234-3341

SECTION 16, TOWNSHIP 23 SOUTH, RANGE 32 EAST, N.M.P.M.  
LEA COUNTY, STATE OF NEW MEXICO  
**ACCESS AERIAL ROUTE MAP**



NOT TO SCALE  
AERIAL PHOTO:  
GOOGLE EARTH  
FEBRUARY 2014

**DEVON ENERGY PRODUCTION COMPANY, L.P.**  
**BIG CAT "16-9" STATE FED COM 1H**  
LOCATED 2590 FT. FROM THE NORTH LINE  
AND 614 FT. FROM THE WEST LINE OF  
SECTION 16, TOWNSHIP 23 SOUTH,  
RANGE 32 EAST, N.M.P.M.  
LEA COUNTY, STATE OF NEW MEXICO

JANUARY 24, 2015

SURVEY NO. 3639

MADRON SURVEYING, INC. 301 SOUTH CANAL (575) 234-3341 CARLSBAD, NEW MEXICO

# One Mile Radius Map

Estimated distances to nearest wellbores:

\*From SHL: Tomcat 16 State 3 735 ft S  
Tomcat 16 State 4 160 ft W  
Tomcat 9 Federal 1 crosses wellbore  
\*From BHL: Red Tank 4 Federal 1H 680 ft N

6  
5  
4  
7  
8  
9  
23S 32E

devon

Big Cat 16-9 State Fed Com 1H

1 Mile Radius Map

0 2,363  
FEET

WELL SYMBOLS  
DRY AND ABANDONED WELL  
GAS PRODUCING WELL  
OIL PRODUCING WELL  
PROPOSED

February 17, 2015

