

MAY 04 2016

DISTRICT I  
1025 N. FRENCH DR., HOBBS, NM 88240  
Phone: (505) 393-8181 Fax: (505) 393-0720

DISTRICT II  
811 S. FIRST ST., ARTESIA, NM 88210  
Phone: (505) 748-1203 Fax: (505) 748-0720

DISTRICT III  
1000 RIO BRAZOS RD., AZTEC, NM 87410  
Phone: (505) 334-0178 Fax: (505) 334-0170

DISTRICT IV  
1220 S. ST. FRANCIS DR., SANTA FE, NM 87505  
Phone: (505) 476-3460 Fax: (505) 475-3462

State of New Mexico  
Energy, Minerals & Natural Resources Department

## OIL CONSERVATION DIVISION

1220 SOUTH ST. FRANCIS DR.  
Santa Fe, New Mexico 87505

Form C-102

Revised August 1, 2011  
Submit one copy to appropriate  
District Office

☐ AMENDED REPORT

## WELL LOCATION AND ACREAGE DEDICATION PLAT

API Number <b>30-025-41813</b>	Pool Code <b>97964</b>	Pool Name <b>WC-025 G-07 S243225C; Bone Spring</b>
Property Code <b>314193</b>	Property Name <b>EIDER FEDERAL</b>	Well Number <b>2H</b>
OCRID No. <b>217955</b>	Operator Name <b>COG PRODUCTION LLC</b>	Elevation <b>3534.3'</b>

## Surface Location

UL or lot No.	Section	Township	Range	Lot Idn	Feet from the	North/South line	Feet from the	East/West line	County
<b>0</b>	<b>35</b>	<b>24-S</b>	<b>32-E</b>		<b>190</b>	<b>SOUTH</b>	<b>1795</b>	<b>EAST</b>	<b>LEA</b>

## Bottom Hole Location If Different From Surface

UL or lot No.	Section	Township	Range	Lot Idn	Feet from the	North/South line	Feet from the	East/West line	County
<b>B</b>	<b>26</b>	<b>24-S</b>	<b>32-E</b>		<b>342</b>	<b>NORTH</b>	<b>1827</b>	<b>EAST</b>	<b>LEA</b>

Dedicated Acres	Joint or Infill	Consolidation Code	Order No.
<b>320</b>			

NO ALLOWABLE WILL BE ASSIGNED TO THIS COMPLETION UNTIL ALL INTERESTS HAVE BEEN CONSOLIDATED  
OR A NON-STANDARD UNIT HAS BEEN APPROVED BY THE DIVISION

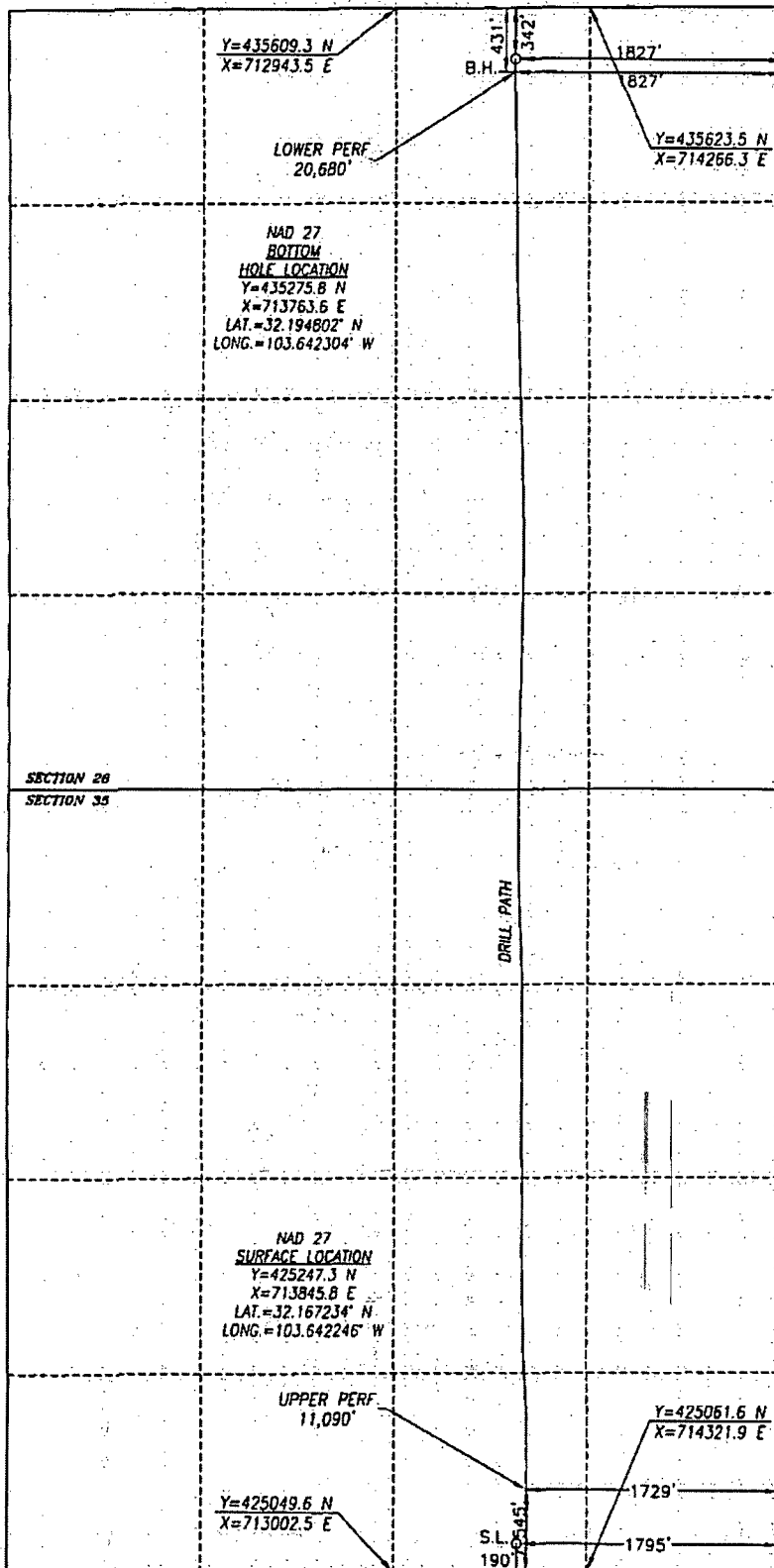
SEE PAGE 2

PAGE 1 OF 2

Certificate No. CHAD HARCROW 17777  
W.O. # 16-264 DRAWN BY: AM

MAY 10 2016

Property Code <b>314193</b>	Property Name <b>EIDER FEDERAL</b>	Well Number <b>2H</b>
OCRID No. <b>217955</b>	Operator Name <b>COG PRODUCTION LLC</b>	Elevation <b>3534.3'</b>



BOREPATH SHOWN HEREON IS BASED ON A DIRECTIONAL SURVEY REPORT PROVIDED BY COG OPERATING, LLC FOR THE EIDER FEDERAL #2H SUPPLIED TO HARCROW SURVEYING, LLC ON MARCH 31, 2016.

1200 0 1200  
SCALE: 1"=1200'

#### OPERATOR CERTIFICATION

I hereby certify that the information herein is true and complete to the best of my knowledge and belief, and that this organization either owns a working interest or unleased mineral interest in the land including the proposed bottom hole location or has a right to drill this well at this location pursuant to a contract with an owner of such mineral or working interest, or to a voluntary pooling agreement or a compulsory pooling order heretofore entered by the division.

Signature Stormi Davis Date 4/29/16

Printed Name  
Stormi Davis

E-mail Address  
sdavis@concho.com

#### SURVEYOR CERTIFICATION

I hereby certify that the well location shown on this plat was plotted from field notes of actual surveys made by me or under my supervision, and that the same is true and correct to the best of my belief.

AUG 8 2013/AUG. 11, 2015

SURVEY DATE/DATE OF GEOGRAPHIC REPORT

Signature & Seal of Professional Surveyor



Signature Chad Harcrow Date 4/15/16

Certificate No. CHAD HARCROW 17777