

District I
1625 N. French Dr., Hobbs, NM 88240
Phone: (575) 393-6161 Fax: (575) 393-0720
District II
811 S. First St., Artesia, NM 88210
Phone: (575) 748-1283 Fax: (575) 748-9720
District III
1000 Rio Brazos Road, Aztec, NM 87410
Phone: (505) 334-6178 Fax: (505) 334-6170
District IV
1220 S. St. Francis Dr., Santa Fe, NM 87505
Phone: (505) 476-3460 Fax: (505) 476-3462

State of New Mexico
Energy, Minerals & Natural Resources Department
OIL CONSERVATION DIVISION
1220 South St. Francis Dr.
Santa Fe, NM 87505

Form C-102
Revised August 1, 2011
Submit one copy to appropriate
District Office

MAY 05 2016

☐ AMENDED REPORT

RECEIVED

WELL LOCATION AND ACREAGE DEDICATION PLAT

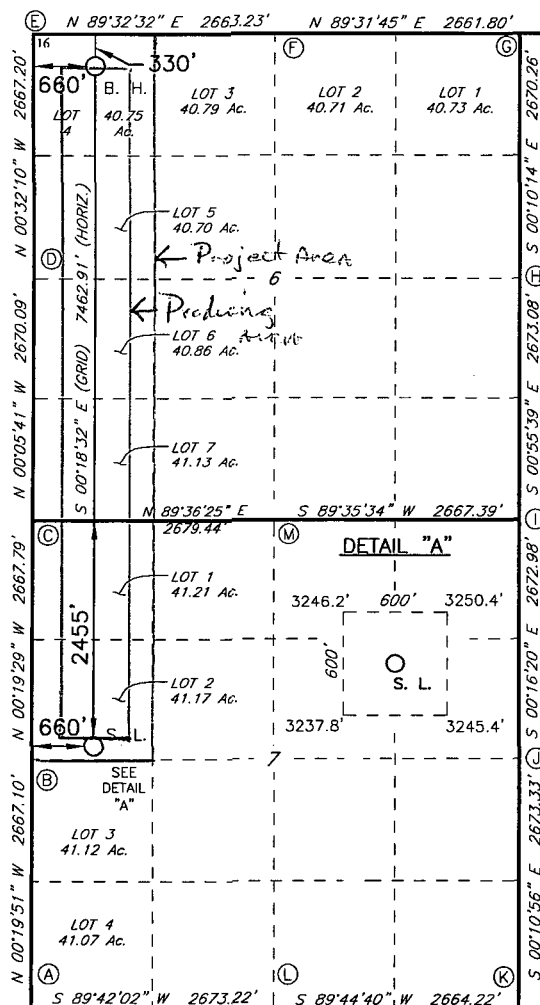
1 API Number 30-025-43216		2 Pool Code 92903 9789		3 Pool Name WC-025 G-06 5253206M; B9	
4 Property Code 316194		5 Property Name PADUCA 7/6 B2ED FED COM			6 Well Number 2H
7 GRID NO. 14741		8 Operator Name MEWBOURNE OIL COMPANY			9 Elevation 3247'

10 Surface Location									
UL or lot no.	Section	Township	Range	Lot Idn	Feet from the	North/South line	Feet From the	East/West line	County
2	7	26S	32E		2455	NORTH	660	WEST	LEA

11 Bottom Hole Location If Different From Surface									
UL or lot no.	Section	Township	Range	Lot Idn	Feet from the	North/South line	Feet from the	East/West line	County
4	6	26S	32E		330	NORTH	660	WEST	LEA

12 Dedicated Acres 240	13 Joint or Infill	14 Consolidation Code	15 Order No.
----------------------------------	--------------------	-----------------------	--------------

No allowable will be assigned to this completion until all interest have been consolidated or a non-standard unit has been approved by the division.



GEODETIC DATA
NAD 27 GRID - NM EAST
SURFACE LOCATION
N: 385365.7 - E: 689867.6
LAT: 32.05800382° N
LONG: 103.72046571° W
BOTTOM HOLE
N: 392827.0 - E: 689827.4
LAT: 32.07851482° N
LONG: 103.72045873° W
CORNER DATA
NAD 27 GRID - NM EAST
A: FOUND BRASS CAP "1939"
N: 382481.9 - E: 689224.3
B: FOUND BRASS CAP "1939"
N: 385148.4 - E: 689208.9
C: FOUND BRASS CAP "1939"
N: 387815.6 - E: 689193.8
D: FOUND BRASS CAP "1939"
N: 390485.1 - E: 689189.4
E: FOUND BRASS CAP "1939"
N: 393151.7 - E: 689164.4
F: FOUND BRASS CAP "1939"
N: 393172.9 - E: 691827.0
G: FOUND BRASS CAP "1939"
N: 393194.8 - E: 694488.2
H: FOUND BRASS CAP "1939"
N: 390525.1 - E: 694496.2
I: FOUND BRASS CAP "1939"
N: 387852.9 - E: 694539.4
J: FOUND BRASS CAP "1939"
N: 385180.5 - E: 694552.1
K: FOUND BRASS CAP "1939"
N: 382507.7 - E: 694560.6
L: FOUND BRASS CAP "1939"
N: 382495.8 - E: 691897.0
M: FOUND BRASS CAP "1939"
N: 387833.9 - E: 691872.6

17 OPERATOR CERTIFICATION

I hereby certify that the information contained herein is true and complete to the best of my knowledge and belief, and that this organization either owns a working interest or unleased mineral interest in the land including the proposed bottom hole location or has a right to drill this well at this location pursuant to a contract with an owner of such a mineral or working interest, or to a voluntary pooling agreement or a compulsory pooling order heretofore entered by the division.

Signature: **BRADLEY BISHOP**
Date: **1-22-16**
Printed Name: **BRADLEY BISHOP**

E-mail Address

18 SURVEYOR CERTIFICATION

I hereby certify that the well location shown on this plat was plotted from field notes of actual surveys made by me or under my supervision, and that the same is true and correct to the best of my belief.

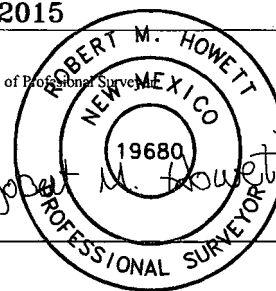
11-20-2015

Date of Survey

Signature and Seal of Professional Surveyor

19680

Certificate Number



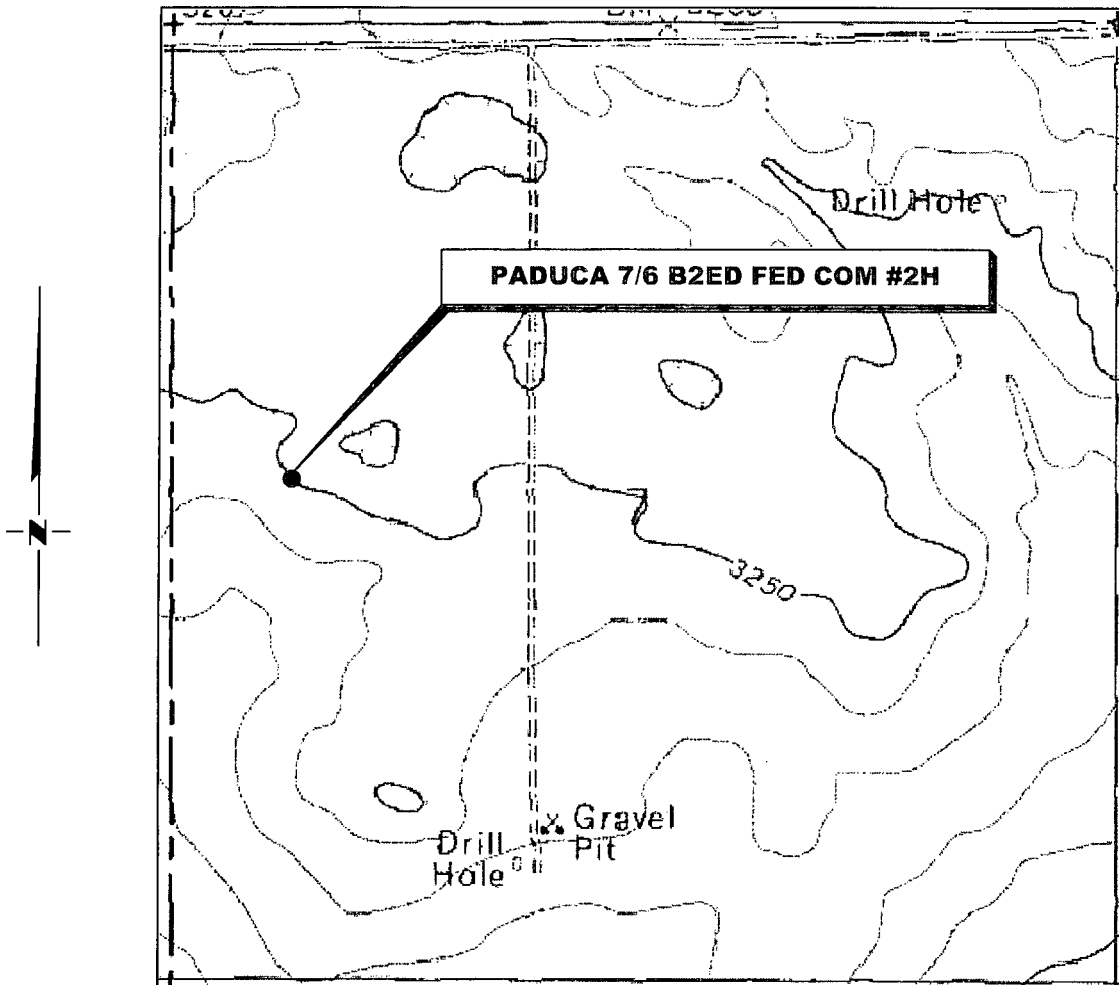
RRC - Firm No.: TX 10193838 NM 4655451 - Job No.: LS1509541

MAY 10 2016

[illegible]

SCALE: 1" = 100'
DATE: 11-20-2015
SURVEYED BY: ML/CE
DRAWN BY: LPS
APPROVED BY: RMH
SHEET : 1 OF 1

LOCATION VERIFICATION MAP



*SECTION 7, TWP. 26 SOUTH, RGE. 32 EAST,
N. M. P. M., LEA CO., NEW MEXICO*

OPERATOR: Mewbourne Oil Company
LEASE: Paduca 7/6 B2ED Fed Com
WELL NO.: 2H
ELEVATION: 3247'

LOCATION: 2455' FNL & 660' FWL
CONTOUR INTERVAL: 10'
USGS TOPO. SOURCE MAP:
Paduca Breaks West, NM (1973)

Firm No.: TX 10193838 NM 4655451

Copyright 2014 - All Rights Reserved

NO.	REVISION	DATE
JOB NO.: LS1509541		
DWG. NO.: 1509541LVM		

RRC

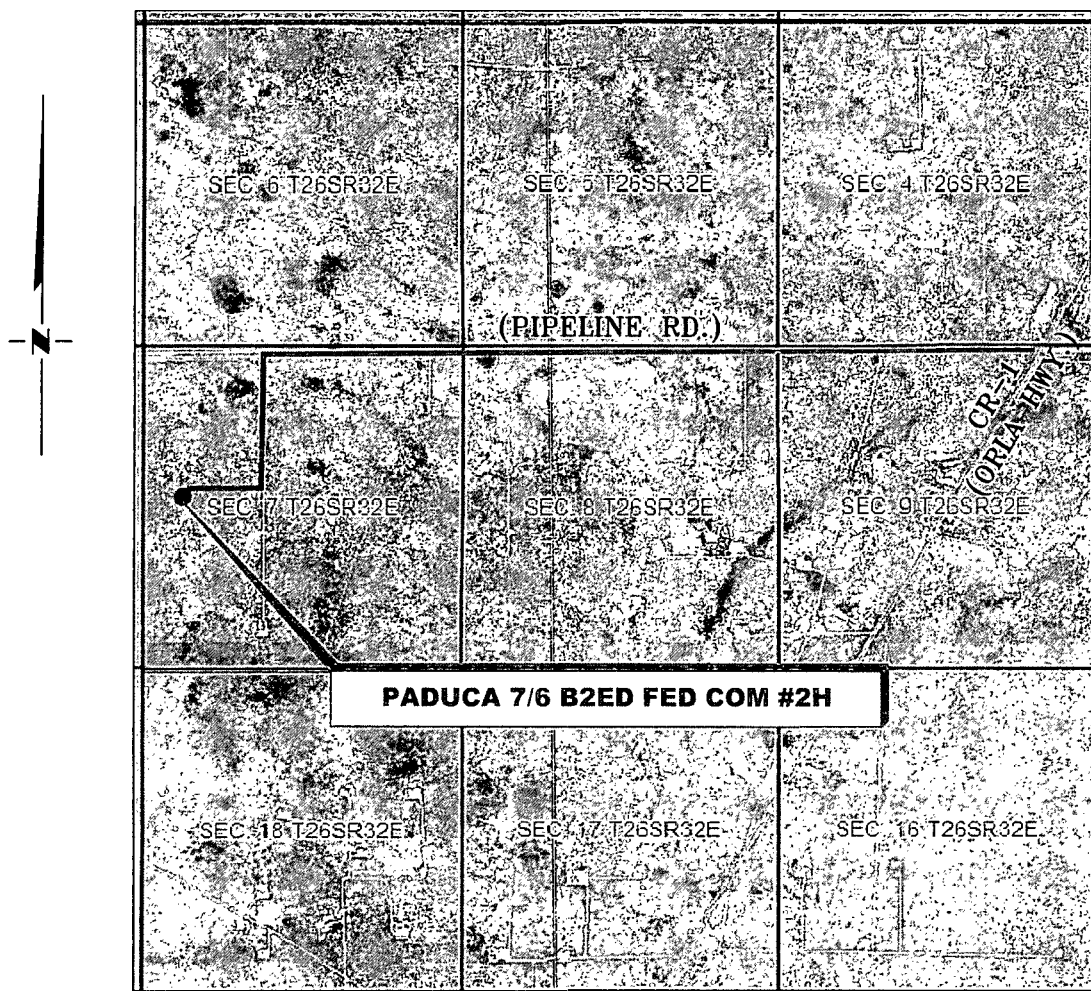
308 W. BROADWAY ST., HOBBS, NM 88240 (575) 964-8200

SCALE: 1" = 1000'
DATE: 11-20-2015
SURVEYED BY: ML/CE
DRAWN BY: LPS
APPROVED BY: RMH
SHEET : 1 OF 1

"3E"

VICINITY MAP

NOT TO SCALE



*SECTION 7, TWP. 26 SOUTH, RGE. 32 EAST,
N. M. P. M., LEA CO., NEW MEXICO*

OPERATOR: Mewbourne Oil Company
LEASE: Paduca 7/6 B2ED Fed Com
WELL NO.: 2H

LOCATION: 2455' FNL & 660' FWL
ELEVATION: 3247'

Firm No.: TX 10193838 NM 4655451

Copyright 2014 - All Rights Reserved

NO.	REVISION	DATE
JOB NO.: LS1509541		
DWG. NO.: 1509541VM		

RRC

308 W. BROADWAY ST., HOBBS, NM 88240 (575) 964-8200

SCALE: NTS
DATE: 11-20-2015
SURVEYED BY: ML/CE
DRAWN BY: LPS
APPROVED BY: RMH
SHEET : 1 OF 1

Exhibit "4" - SL - Paduca 7/6 B2ED Red Com #2H

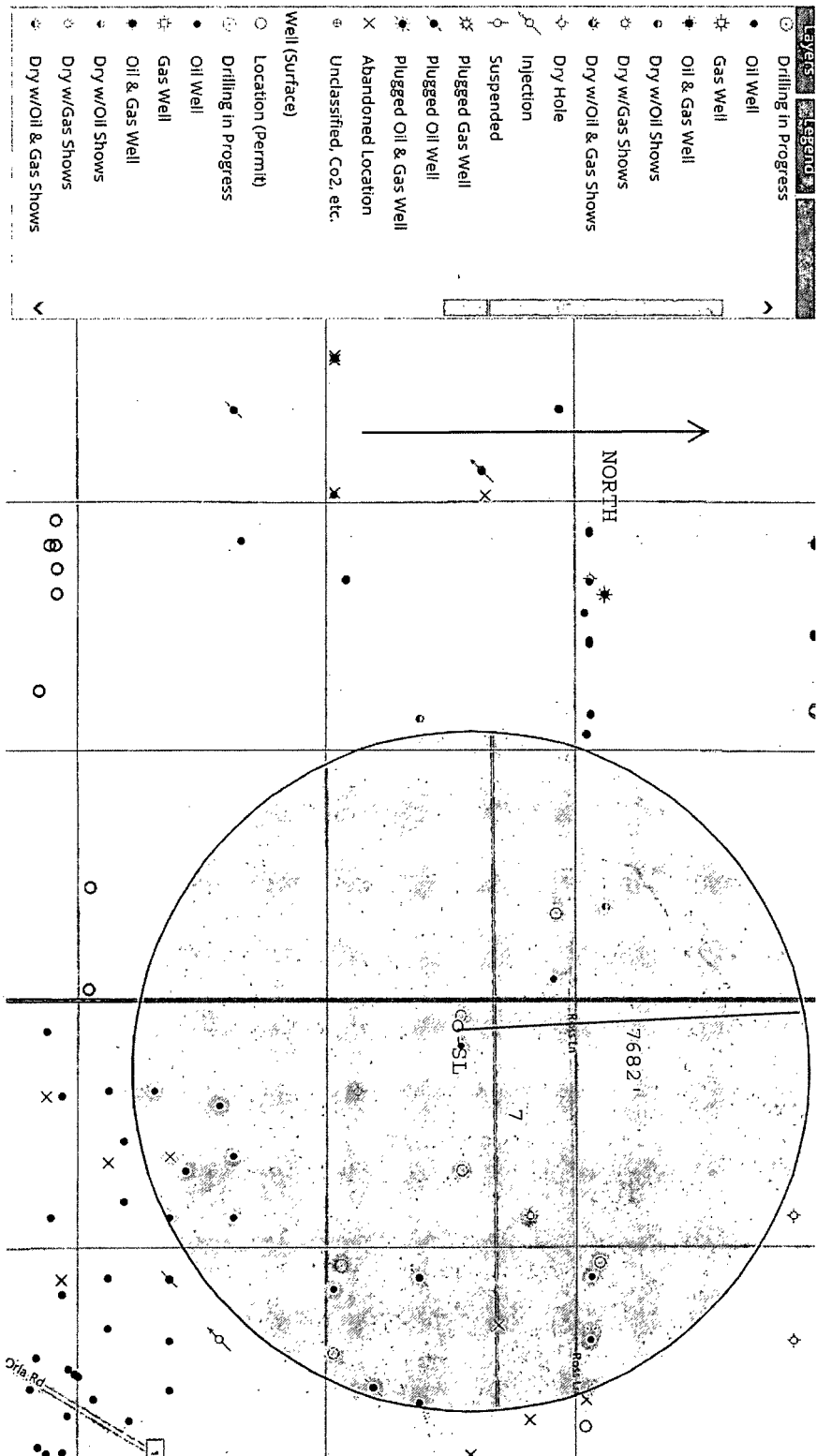
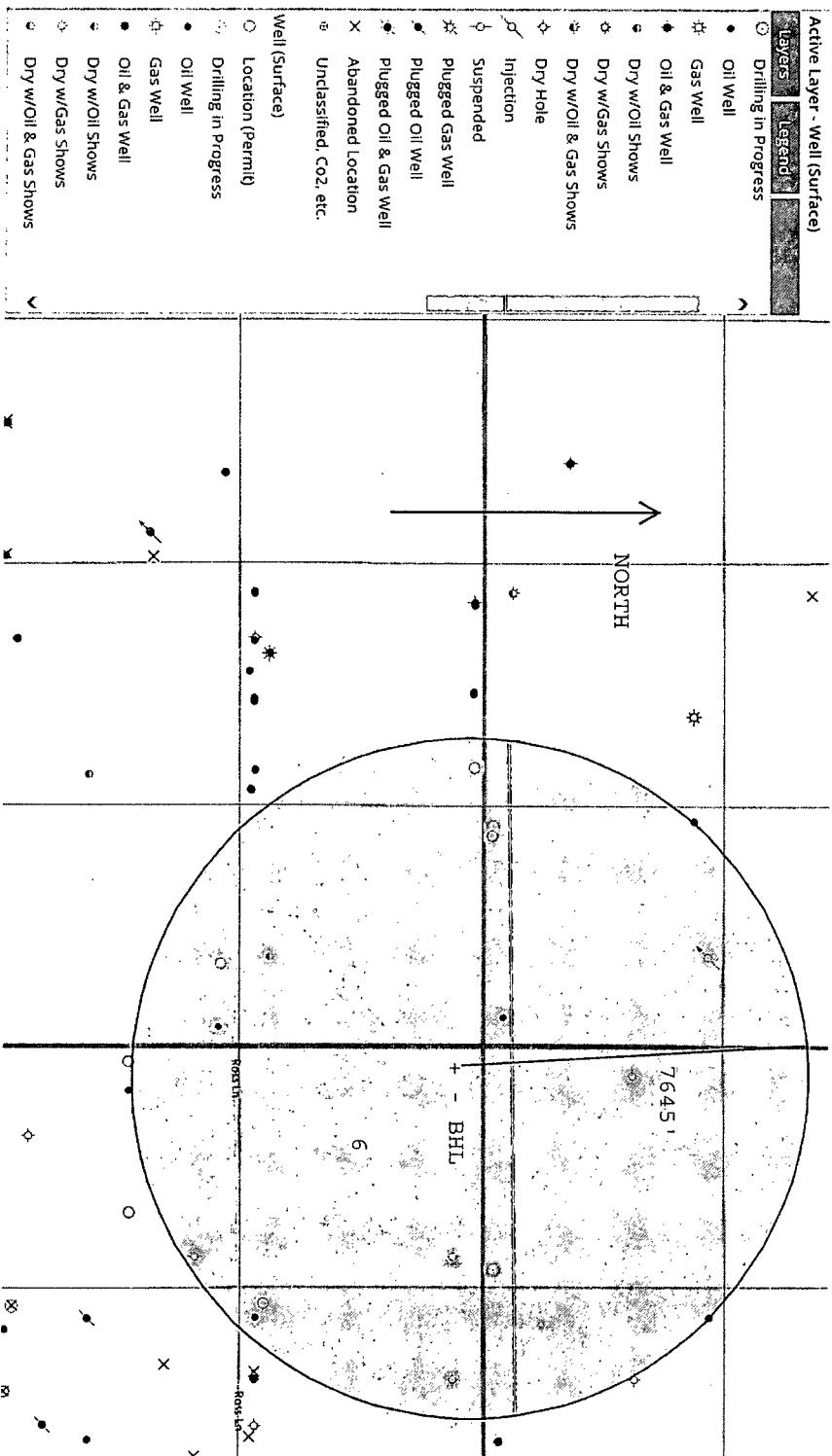


Exhibit "4A" - BHL - Paduca 7/6 B2ED Fed Com #2H



3246.2'

3250.4'

600'

3250'

3245.0'

F=2.0'

3251.1'

C=4.1'

3250'

EXISTING PAD
PADUCA 7/6 A2ED
FED COM #1

3245'

3246'

3247'

3248'

3249'

170'

150'

170'

3250.5'

C=3.5'

PROPOSED PAD

3243.5'

F=3.5'

3250.5'

C=3.5'

3250.2'

3242.8'

3241'

3240'

3239'

3238'

3237.8'

600'

600'

600'

600'

TOPSOIL

320'

30'

30'


340'

340'

PADUCA 7/6 B2ED FED COM #2H
ELEV.: 3247'
LAT: 32.05800382° N
LONG: 103.72046571° W

From the intersection of Pipeline Road and CR-1 (Orla Hwy.)
Go West on Pipeline Road approx. 2.5 miles to a lease road on the left;
Turn left and go South approx. 0.4 miles to a lease road on the right;
Turn right and go West approx. 0.3 miles to location on the left.

SCALE: 1" = 100'



A horizontal scale bar with a black fill and white tick marks. The bar is divided into two equal segments by a vertical line. Below the bar, the numbers 0, 50, and 100 are printed at the left, middle, and right ends respectively.

BEARINGS ARE
NAD 27 GRID - NM EAST
DISTANCES ARE GROUND

Firm No.: TX 10193838 NM 4655451

Copyright 2015 – All Rights Reserved

NO.	REVISION	DATE

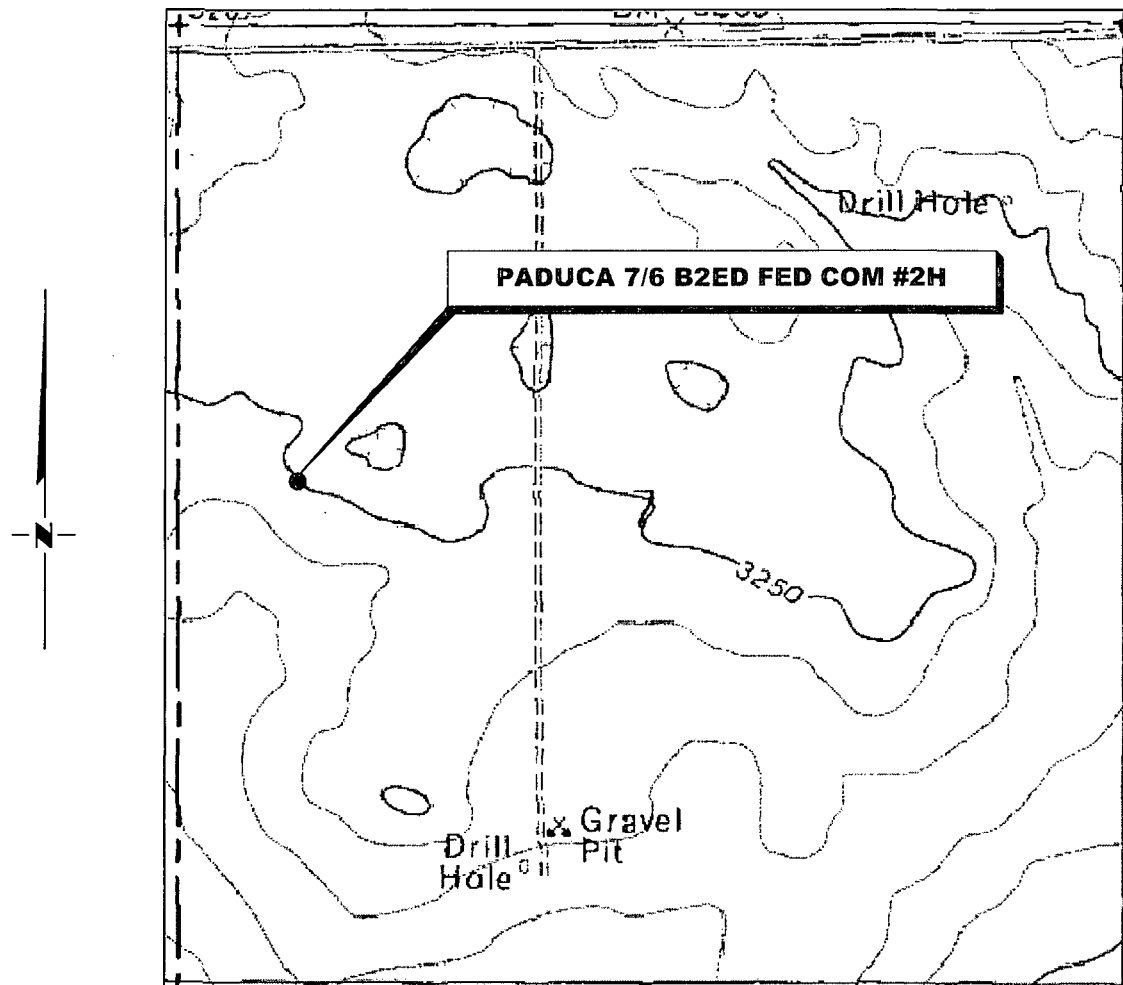
JOB NO.: LS1509541
 DWG. NO.: 1509541PAD

RRC

308 W. BROADWAY ST., HOBBS, NM 88240 (575) 964-8200

SCALE: 1" = 100'
DATE: 11-20-2015
SURVEYED BY: ML/CE
DRAWN BY: LPS
APPROVED BY: RMH
SHEET : 1 OF 1

LOCATION VERIFICATION MAP



*SECTION 7, TWP. 26 SOUTH, RGE. 32 EAST,
N. M. P. M., LEA CO., NEW MEXICO*

OPERATOR: Mewbourne Oil Company
LEASE: Paduca 7/6 B2ED Fed Com
WELL NO.: 2H
ELEVATION: 3247'

LOCATION: 2455' FNL & 660' FWL
CONTOUR INTERVAL: 10'
USGS TOPO. SOURCE MAP:
Paduca Breaks West, NM (1973)

Firm No.: TX 10193838 NM 4655451

Copyright 2014 - All Rights Reserved

NO.	REVISION	DATE
JOB NO.: LS1509541		
DWG. NO.: 1509541LVM		

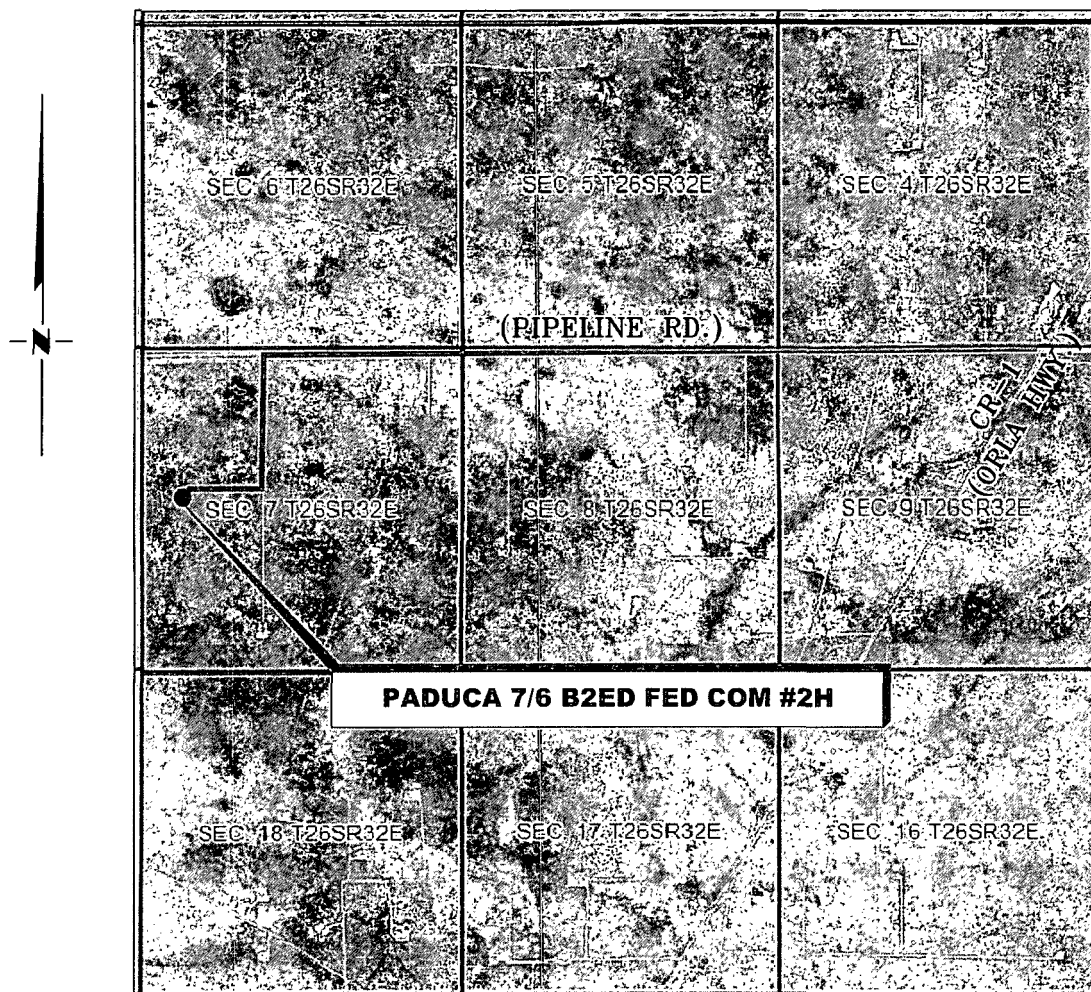
RRC

308 W. BROADWAY ST., HOBBS, NM 88240 (575) 964-8200

SCALE: 1" = 1000'
DATE: 11-20-2015
SURVEYED BY: ML/CE
DRAWN BY: LPS
APPROVED BY: RMH
SHEET : 1 OF 1

VICINITY MAP

NOT TO SCALE



*SECTION 7, TWP. 26 SOUTH, RGE. 32 EAST,
N. M. P. M., LEA CO., NEW MEXICO*

OPERATOR: Mewbourne Oil Company
LEASE: Paduca 7/6 B2ED Fed Com
WELL NO.: 2H

LOCATION: 2455' FNL & 660' FWL
ELEVATION: 3247'

Firm No.: TX 10193838 NM 4655451

Copyright 2014 - All Rights Reserved

NO.	REVISION	DATE
JOB NO.: LS1509541		
DWG. NO.: 1509541VM		

RRC

308 W. BROADWAY ST., HOBBS, NM 88240 (575) 964-8200

SCALE: NTS
DATE: 11-20-2015
SURVEYED BY: ML/CE
DRAWN BY: LPS
APPROVED BY: RMH
SHEET : 1 OF 1