

OCD Hobbs  
**HOBBS OCD**

MAY 09 2016

FORM APPROVED  
OMB No. 1004-0137  
Expires October 31, 2014

UNITED STATES  
DEPARTMENT OF THE INTERIOR  
BUREAU OF LAND MANAGEMENT

**RECEIVED**

**APPLICATION FOR PERMIT TO DRILL OR REENTER**

1a. Type of work: <input checked="" type="checkbox"/> DRILL <input type="checkbox"/> REENTER		7. If Unit or CA Agreement, Name and No.
1b. Type of Well: <input checked="" type="checkbox"/> Oil Well <input type="checkbox"/> Gas Well <input type="checkbox"/> Other <input checked="" type="checkbox"/> Single Zone <input type="checkbox"/> Multiple Zone		8. Lease Name and Well No. Whirling Wind 11 Fed Com 703H
2. Name of Operator EOG Resources, Inc (7377) /		9. API Well No. 30-025- 43 225
3a. Address P.O. Box 2267 Midland, TX 79702	3b. Phone No. (include area code) 432-686-3689	10. Field and Pool, or Exploratory WC-025 G-09 S253336D; Upper WC
4. Location of Well (Report location clearly and in accordance with any State requirements.)* At surface 842' FSL & 2395' FEL, SWSE (O), Sec 11, 26S, 33E At proposed prod. zone 2410' FSL & 1650' FEL, NWSE (J), Sec 2		11. Sec., T. R. M. or Blk. and Survey or Area Section 11, T26S, R33E
14. Distance in miles and direction from nearest town or post office* Approximately +/- 23 miles Southwest from Jal, New Mexico		12. County or Parish Lea
15. Distance from proposed* location to nearest property or lease line, ft. (Also to nearest drig. unit line, if any) 230', 330' PP		13. State NM
16. No. of acres in lease 1280	17. Spacing Unit dedicated to this well 240 ac.	
18. Distance from proposed location* to nearest well, drilling, completed, applied for, on this lease, ft. 660' from 704H	19. Proposed Depth 20077' MD, 12555' TVD	20. BLM/BIA Bond No. on file NM 2308
21. Elevations (Show whether DF, KDB, RT, GL, etc.) 3345' GL	22. Approximate date work will start* 08/01/2016	23. Estimated duration 25 days

24. Attachments

The following, completed in accordance with the requirements of Onshore Oil and Gas Order No. 1, must be attached to this form:

- |                                                                                                                                                |                                                                                                 |
|------------------------------------------------------------------------------------------------------------------------------------------------|-------------------------------------------------------------------------------------------------|
| 1. Well plat certified by a registered surveyor.                                                                                               | 4. Bond to cover the operations unless covered by an existing bond on file (see Item 20 above). |
| 2. A Drilling Plan.                                                                                                                            | 5. Operator certification                                                                       |
| 3. A Surface Use Plan (if the location is on National Forest System Lands, the SUPO must be filed with the appropriate Forest Service Office). | 6. Such other site specific information and/or plans as may be required by the BLM.             |

25. Signature <i>Stan Wagner</i>	Name (Printed/Typed) Stan Wagner	Date 3/2/16
Title Regulatory Specialist		
Approved by (Signature) <i>/s/George MacDonell</i>	Name (Printed/Typed)	Date MAY - 4 2016
Title FIELD MANAGER	Office CARLSBAD FIELD OFFICE	

Application approval does not warrant or certify that the applicant holds legal or equitable title to those rights in the subject lease which would entitle the applicant to conduct operations thereon.  
Conditions of approval, if any, are attached.

**APPROVAL FOR TWO YEARS**

Title 18 U.S.C. Section 1001 and Title 43 U.S.C. Section 1212, make it a crime for any person knowingly and willfully to make to any department or agency of the United States any false, fictitious or fraudulent statements or representations as to any matter within its jurisdiction.

(Continued on page 2)

**Carlsbad Controlled Water Basin**

See attached NMOC  
Conditions of Approval

**SEE ATTACHED FOR  
CONDITIONS OF APPROVAL**

**Approval Subject to General Requirements  
& Special Stipulations Attached**

MAY 12 2016

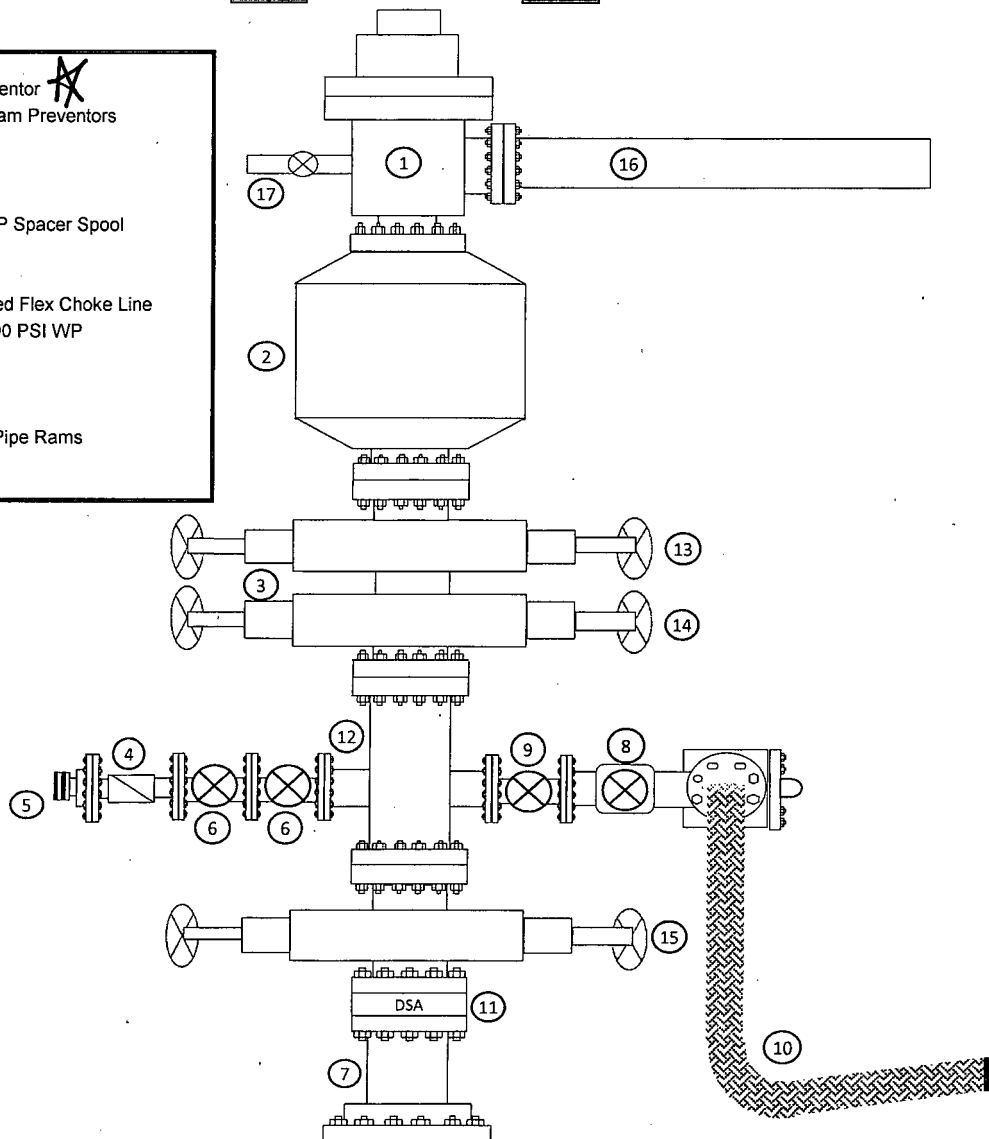
# Exhibit 1

## EOG Resources

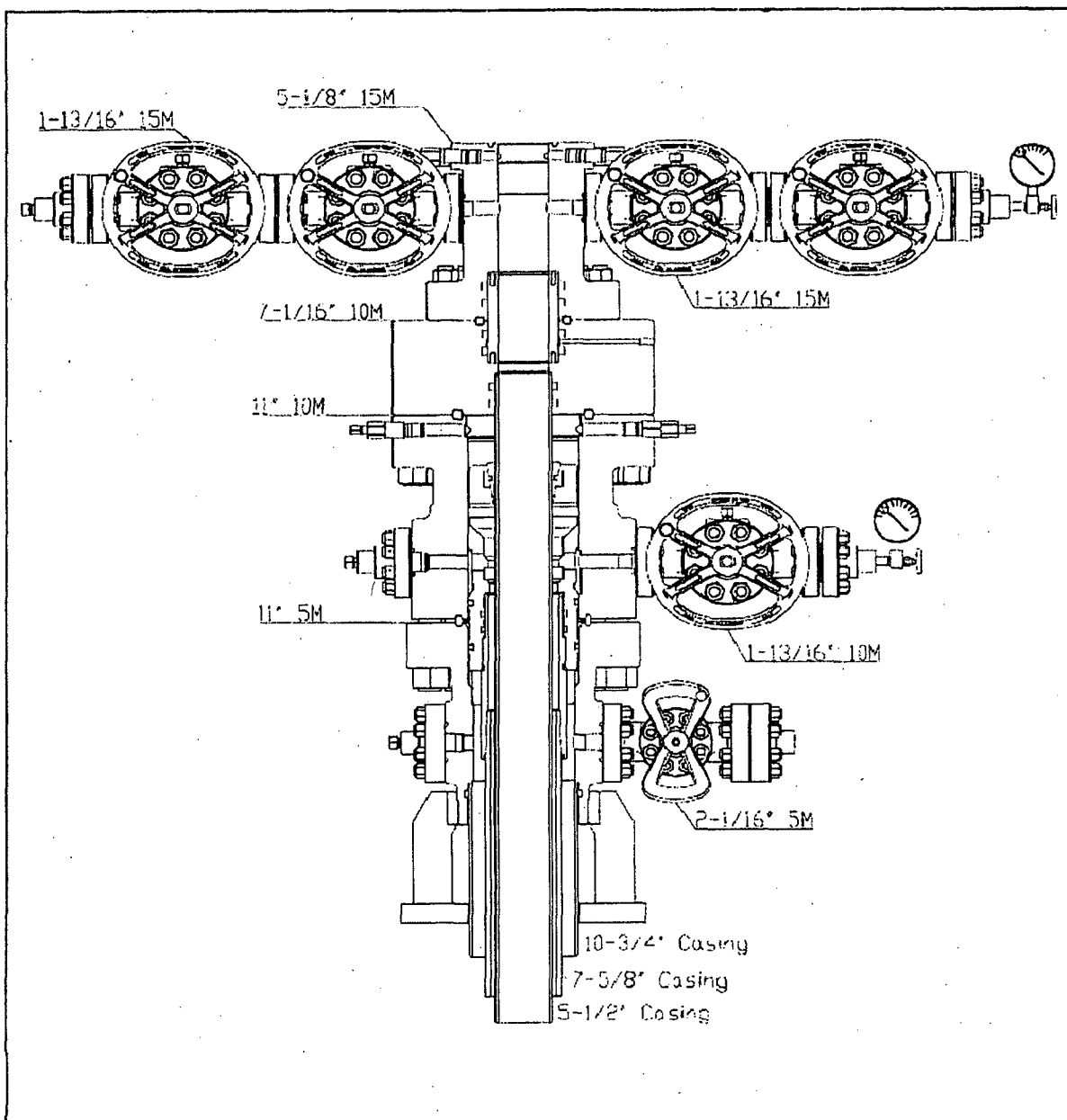
### 10M BOPE

Rig Floor

- 1. 13 5/8" Rotating Head
- 2. NOV 13 5/8" 5,000 PSI WP GK Annular Preventor ~~3~~
- 3. 13 5/8" Cameron Type "U" 10,000 PSI WP Ram Preventors
- 4. 2 1/16" - 10,000 PSI WP Check Valve
- 5. 10,000 PSI WP - 1502 Union to kill line
- 6. 2 1/16" - 10,000 PSI WP Manual Valves
- 7. 13 5/8" 3,000 PSI WP x 13 5/8" 5,000 PSI WP Spacer Spool
- 8. 4 1/16" 10,000 PSI WP HCR Valve
- 9. 4 1/16" 10,000 PSI WP Manual Valve
- 10. 6" OD x 3" ID 10,000 PSI WP Steel Armoured Flex Choke Line
- 11. DSA - 13 5/8" 10,000 PSI WP x 13 5/8" 5,000 PSI WP
- 12. Mud Cross - 13 5/8" 10,000 PSI WP
- 13. Blind Rams
- 14. Pipe Rams
- 15. 13 5/8" Cameron Type "U" 10,000 PSI WP Pipe Rams
- 16. Flow Line
- 17. 2" Fill Line



*Per Regulation  
5M system*



EDG RESOURCES

10-3/4" X 7-5/8" X 5-1/2"  
FBD-100 WELLHEAD SYSTEM  
QUOTE # - 86366

DWN	RAY	7/9/15
CHK		
APP		
	BY	DATE



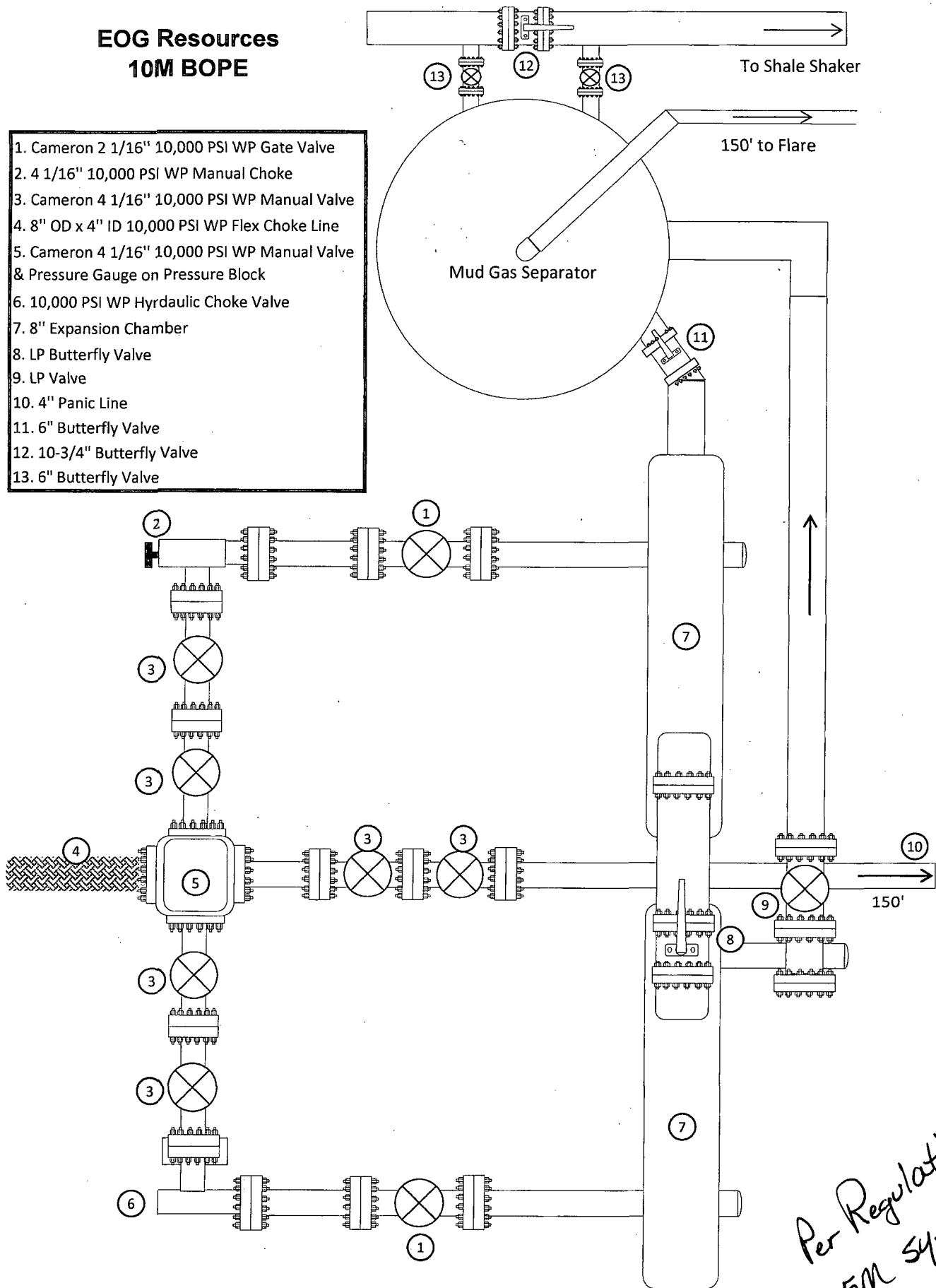
Worldwide Executive Global Strength

DRAWING NO  
WH-15315

# Exhibit 1a

## EOG Resources 10M BOPE

1. Cameron 2 1/16" 10,000 PSI WP Gate Valve
2. 4 1/16" 10,000 PSI WP Manual Choke
3. Cameron 4 1/16" 10,000 PSI WP Manual Valve
4. 8" OD x 4" ID 10,000 PSI WP Flex Choke Line
5. Cameron 4 1/16" 10,000 PSI WP Manual Valve & Pressure Gauge on Pressure Block
6. 10,000 PSI WP Hyrdraulic Choke Valve
7. 8" Expansion Chamber
8. LP Butterfly Valve
9. LP Valve
10. 4" Panic Line
11. 6" Butterfly Valve
12. 10-3/4" Butterfly Valve
13. 6" Butterfly Valve



## PREMIUM CONNECTIONS PERFORMANCE DATA

Size 5.500

NomWt 23.0

Grade P-110 HC

TMK UP ULTRA™

5.500in

23.0lbs/ft

P-110 HC

SFII

Technical Data Sheet

## Tubular Parameters

Size	5.500	in	Minimum Yield	110,000	psi
Nominal Weight	23.0	lbs/ft	Minimum Tensile	125,000	psi
Grade	P-110 HC		Yield Load	729,000	lbs
PE Weight	22.54	lbs/ft	Tensile Load	828,000	lbs
Wall Thickness	0.415	in	Min. Internal Yield Pressure	14,500	psi
Nominal ID	4.670	in	Collapse Pressure	15,110	psi
Drift Diameter	4.545	in			
Nom. Pipe Body Area	6.630	in <sup>2</sup>			

## Connection Parameters

Connection OD	5.726	in
Connection ID	4.626	in
Make - Up Loss	5.653	in
Critical Section Area	5.817	in <sup>2</sup>
Efficiency - Tension	85%	%
Efficiency - Compression	73%	%
Yield Load In Tension	621,000	lbs
Min. Internal Yield Pressure	14,500	psi
Collapse Pressure	15,110	psi
Uniaxial Bending	78	°/ 100 ft

## Make-Up Torques

Min. Make-Up Torque	15,500	ft-lbs
Optimum Make-Up Torque	16,300	ft-lbs
Max. Make-Up Torque	18,700	ft-lbs
Yield Torque	24,800	ft-lbs



Printed on : November-24-2015

## NOTE:

The content of this Technical Data Sheet is for general information only and does not guarantee performance or imply fitness for a particular purpose, which only a competent drilling professional can determine considering the specific installation and operation parameters. Information that is printed or downloaded is no longer controlled by TMK IPSCO and might not be the latest information. Anyone using the information herein does so at their own risk. To verify that you have the latest TMK IPSCO technical information, please contact TMK IPSCO Technical Sales toll-free at 1-888-258-2000.

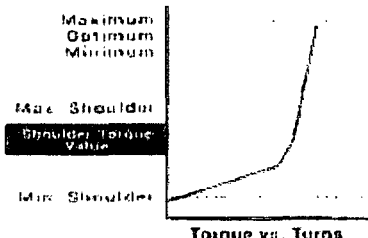
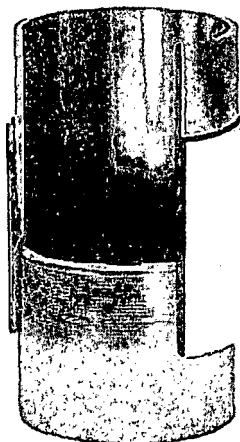
# JFEBEAR



JFE

Jun. 23, 2016

SIZE: 5 000 in (127 mm)  
 WEIGHT: 23.20 lb/ft (34.53 kg/m)  
 GRADE: P110  
 COUP: Standard  
 EP: API Spec (EP#10)



JFE has performed and continues to perform connection and qualification testing according to the most rigorous industry and customer standards. Performance ratings are unified ratings based on specified pipe minimum performance properties. Please contact the JFE-TC office for the latest information.

MATERIAL	Imperial	Metric
Min Yield Strength	110,000 psi	750 MPa
Max Yield Strength	140,000 psi	965 MPa
Min Tensile Strength	125,000 psi	862 MPa

## COUPLING

Coupling OD	5.760 in	146.05 mm
Coupling ID	4.143 in	105.23 mm
Tensile Efficiency	105%	105%
Coupling Length	10.389 in	265.07 mm
Make-up Loss Length	4.03 in	117.60 mm
Bearing Face Load	443 kip	9.97 kN

## PIPE

Pipe Body Wall	0.478 in	12.14 mm
Pipe ID	4.044 in	102.72 mm
Drift Diameter	3.010 in	90.54 mm
Pipe Cross Section	6.701 in <sup>2</sup>	4,381 mm <sup>2</sup>
Collapse Pressure	10,020 psi	131.14 MPa
Internal Yield Pressure	10,400 psi	126.66 MPa
Pipe Body Yield Strength	747 kip	3,320 kN

## CONNECTION PERFORMANCE

Collapse Pressure	10,020 psi	131.14 MPa
Internal Yield Pressure	10,400 psi	126.66 MPa
Joint Strength	747 kip	3,320 kN
Joint Tensile Efficiency	100%	100%
Compression Rating	508 kip	2,250 kN

## FIELD MAKE-UP TORQUE

Min Torque	13,500 ft-lb	30,000 Nm
Opt Torque	15,000 ft-lb	32,322 Nm
Max Torque	16,500 ft-lb	34,555 Nm

**Manufacturer: Midwest Hose & Specialty**

**Serial Number: SN#90067**

**Length: 35'**

**Size: OD = 8" ID = 4"**

**Ends: Flanges Size: 4-1/16"**

**WP Rating: 10,000 psi    Anchors required by manufacturer: No**

**M I D W E S T**  
**HOSE AND SPECIALTY INC.**

<b>INTERNAL HYDROSTATIC TEST REPORT</b>			
<b>Customer:</b> CACTUS		<b>P.O. Number:</b> RIG #123 Asset # M10761	
<b>HOSE SPECIFICATIONS</b>			
<b>Type:</b> CHOKER LINE		<b>Length:</b> 35'	
<b>I.D.</b> 4" INCHES		<b>O.D.</b> 8" INCHES	
<b>WORKING PRESSURE</b> 10,000 PSI	<b>TEST PRESSURE</b> 15,000 PSI	<b>BURST PRESSURE</b> PSI	
<b>COUPLINGS</b>			
<b>Type of End Fitting</b> 4 1/16 10K FLANGE			
<b>Type of Coupling:</b> SWEDGED		<b>MANUFACTURED BY</b> MIDWEST HOSE & SPECIALTY	
<b>PROCEDURE</b>			
<i>Hose assembly pressure tested with water at ambient temperature.</i>			
<b>TIME HELD AT TEST PRESSURE</b> 1 MIN.		<b>ACTUAL BURST PRESSURE:</b> 0 PSI	
<b>COMMENTS:</b> SN#90067 M10761 Hose is covered with stainless steel armour cover and wrapped with fire resistant vermiculite coated fiberglass insulation rated for 1500 degrees complete with lifting eyes			
<b>Date:</b> 6/6/2011	<b>Tested By:</b> BOBBY FINK		<b>Approved:</b> MENDI JACKSON



Midwest Hose  
& Specialty, Inc.

## Internal Hydrostatic Test Graph

Customer: CACTUS

SALES ORDER# 90067

### Hose Specifications

Hose Type  
C & K

I.D.  
4"

Length  
35'

O.D.  
8"

### Verification

Type of Fitting  
4 1/16 10K

Die Size  
6.62"

Coupling Method  
Swage

Final O.D.  
6.68"

Working Pressure  
10000 PSI

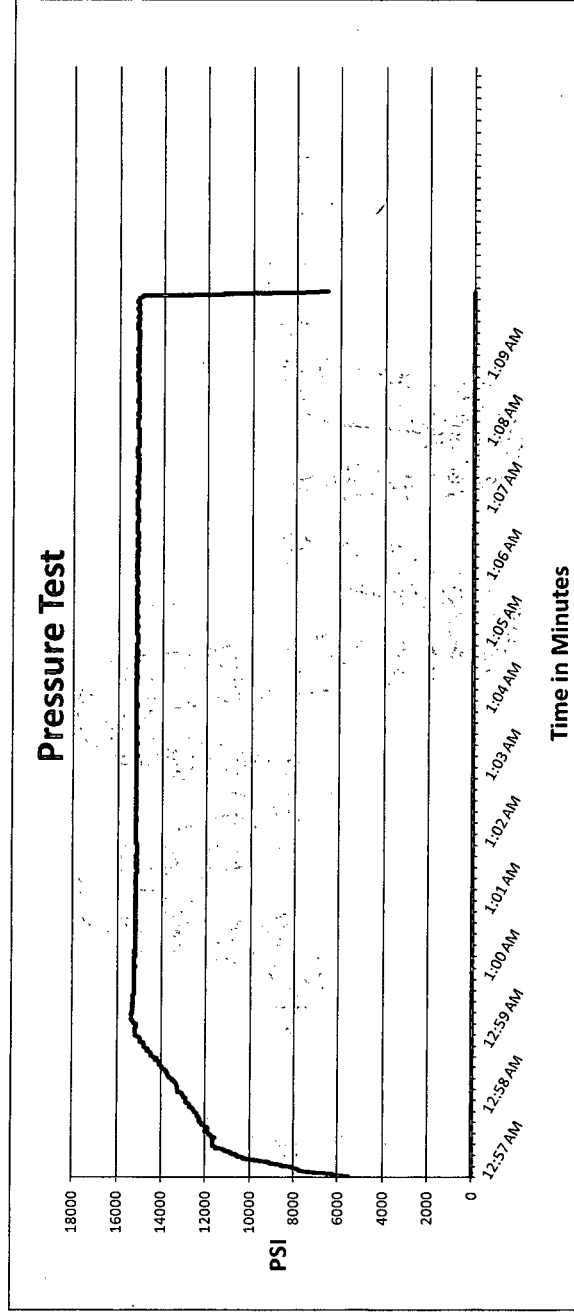
Burst Pressure

Standard Safety Multiplier Applies

Hose Serial #

Hose Assembly Serial #

90067



Test Pressure  
15000 PSI

Time Held at Test Pressure  
11 1/4 Minutes

Actual Burst Pressure

Peak Pressure  
15439 PSI

Comments: Hose assembly pressure tested with water at ambient temperature.

Tested By: Bobby Fink

Approved By: Mendi Jackson

*Bobby Fink*

*Mendi Jackson*

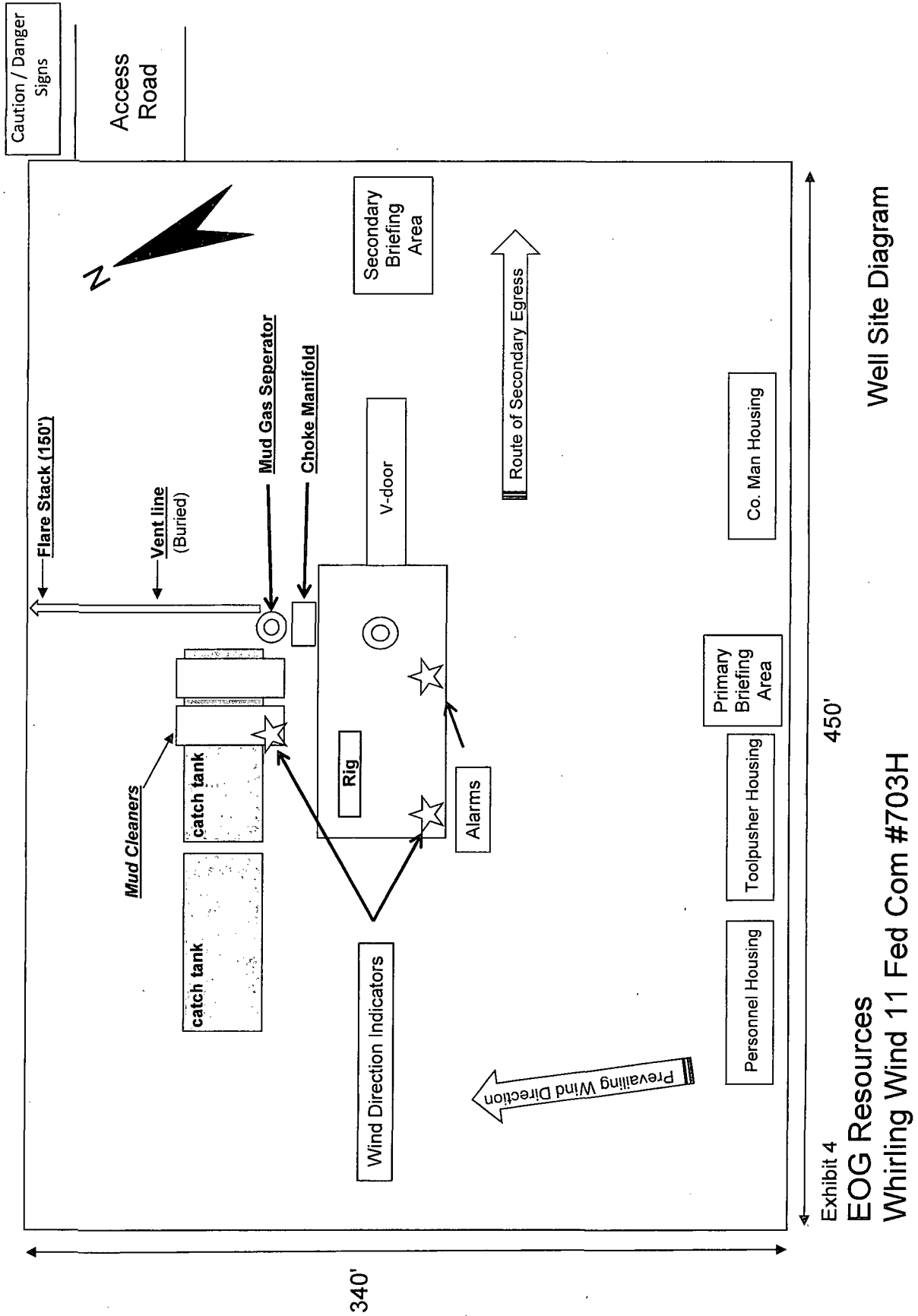


Exhibit 4

EOG Resources

Whirling Wind 11 Fed Com #703H

450'

Well Site Diagram

340'

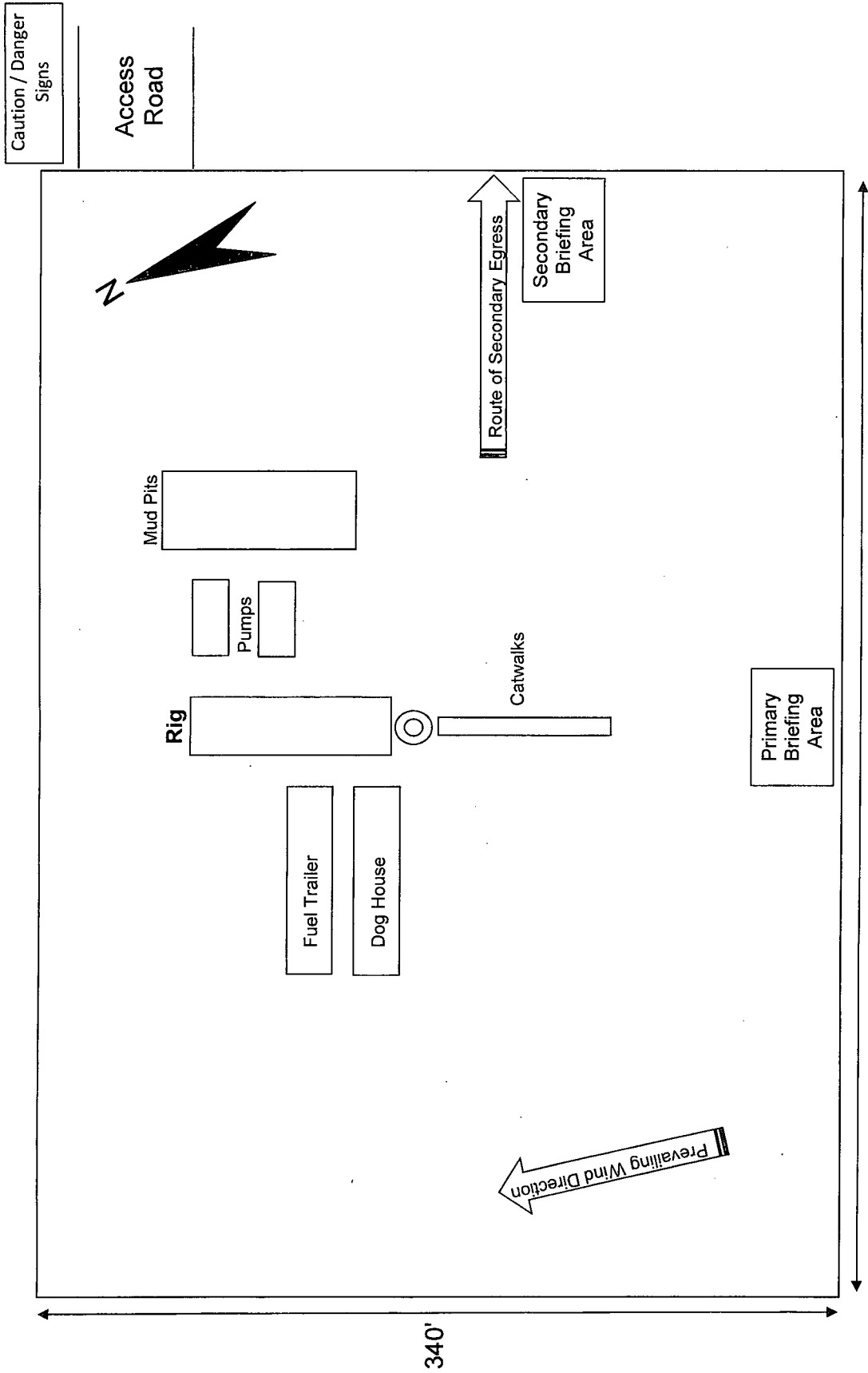


Exhibit 4 (A) Option  
EOG Resources  
Whirling Wind 11 Fed Com #703H

Well Site Diagram