

DISTRICT I
1625 N. French Dr., Hobbs, NM 88240
Phone: (575) 393-6101 Fax: (575) 393-0720

DISTRICT II
811 S. First St., Artesia, NM 88210
Phone: (575) 748-1283 Fax: (575) 748-9720

DISTRICT III
1000 Rio Brazos Road, Aztec, NM 87410
Phone: (505) 334-6178 Fax: (505) 334-6170

DISTRICT IV
1220 S. St. Francis Dr., Santa Fe, NM 87505
Phone: (505) 476-3460 Fax: (505) 476-3462

State of New Mexico
Energy, Minerals & Natural Resources Department
OIL CONSERVATION DIVISION
1220 South St. Francis Dr.
Santa Fe, New Mexico 87505

HOBBS OCD

MAY 02 2016

RECEIVED

Form C-102
Revised August 1, 2011
Submit one copy to appropriate District Office

☐ AMENDED REPORT

WELL LOCATION AND ACREAGE DEDICATION PLAT

API Number 30 - 025 - 43232	Pool Code 17290	Pool Name DENTON; WOLFCAMP
Property Code 314204	Property Name DMT 7 FEE	Well Number 3
OGRID No. 24010	Operator Name V-F PETROLEUM INC.	Elevation 3778'

Surface Location

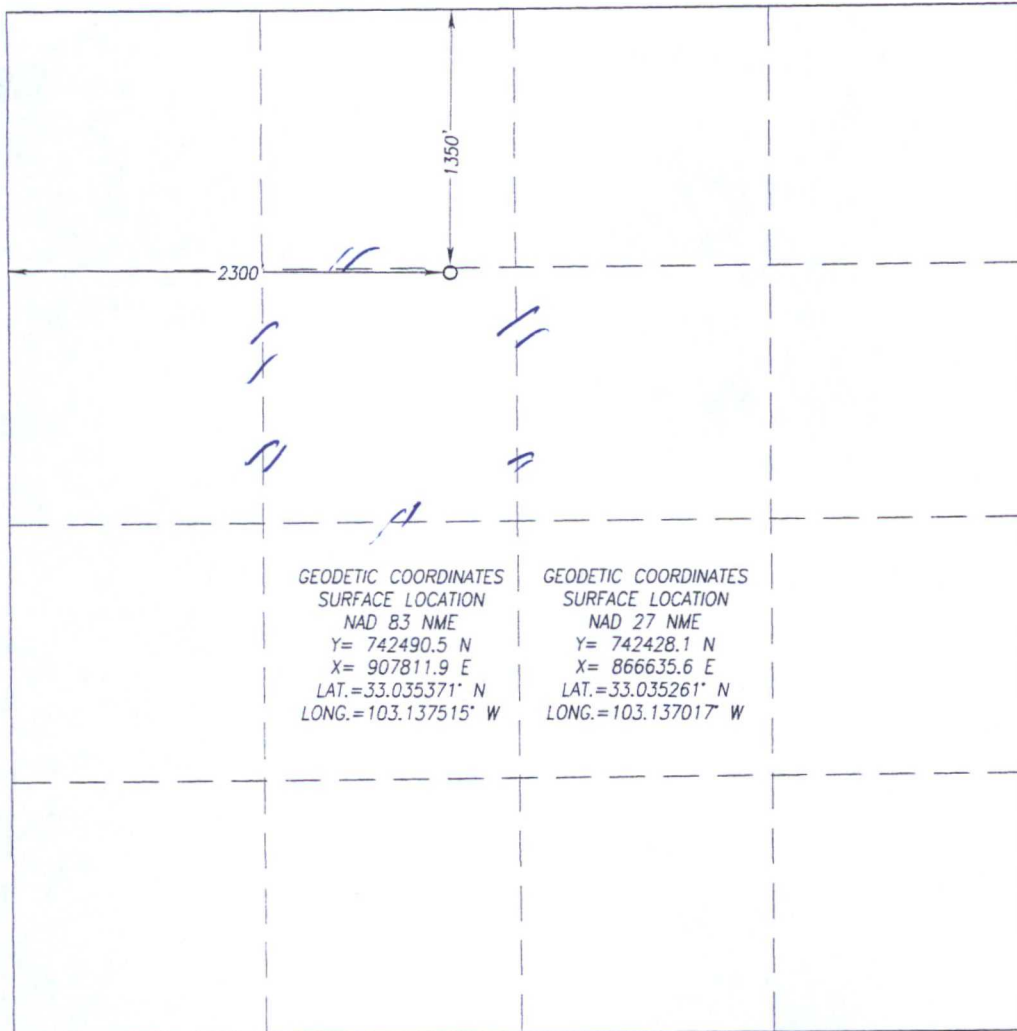
UL or lot No.	Section	Township	Range	Lot Idn	Feet from the	North/South line	Feet from the	East/West line	County
F	7	15-S	38-E		1350	NORTH	2300	EAST	LEA

Bottom Hole Location If Different From Surface

UL or lot No.	Section	Township	Range	Lot Idn	Feet from the	North/South line	Feet from the	East/West line	County

Dedicated Acres 160.40	Joint or Infill N	Consolidation Code	Order No.
----------------------------------	----------------------	--------------------	-----------

NO ALLOWABLE WILL BE ASSIGNED TO THIS COMPLETION UNTIL ALL INTERESTS HAVE BEEN CONSOLIDATED OR A NON-STANDARD UNIT HAS BEEN APPROVED BY THE DIVISION



OPERATOR CERTIFICATION

I hereby certify that the information herein is true and complete to the best of my knowledge and belief, and that this organization either owns a working interest or unleased mineral interest in the land including the proposed bottom hole location or has a right to drill this well at this location pursuant to a contract with an owner of such mineral or working interest, or to a voluntary pooling agreement or a compulsory pooling order heretofore entered by the division.

Eric Sprinkle 4/27/2016
Signature Date
Printed Name
eric@vfpetroleum.com
E-mail Address

SURVEYOR CERTIFICATION

I hereby certify that the well location shown on this plat was plotted from field notes of actual surveys made by me or under my supervision, and that the same is true and correct to the best of my belief.

FEBRUARY 5, 2015
Date of Survey
Signature and Seal of Professional Surveyor:
Ronald J. Eidson 02/23/2015
Certificate Number Gary G. Eidson 12641
Ronald J. Eidson 3239
LSL REV 2/23/15 JWSC W.O.: 15.11.0114

my