



**HOBBS OCD**

**MAY 16 2016**

**RECEIVED**

**Devon Energy Center  
333 West Sheridan Avenue  
Oklahoma City, Oklahoma 73102-5015**

# **Hydrogen Sulfide (H<sub>2</sub>S) Contingency Plan**

**For**

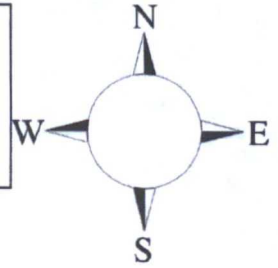
**Rio Blanco 4-33 Fed Com 2H**

**Sec-4 T-23S R-34E  
2630' FNL & 350' FWL  
LAT. = 32.3336803' N (NAD83)  
LONG = 103.4824781' W**

**Lea County NM**

## Rio Blanco 4-33 Fed Com 2H

This is an open drilling site. H<sub>2</sub>S monitoring equipment and emergency response equipment will be used within 500' of zones known to contain H<sub>2</sub>S, including warning signs, wind indicators and H<sub>2</sub>S monitor.



Assumed 100 ppm ROE = 3000' (Radius of Exposure)  
100 ppm H<sub>2</sub>S concentration shall trigger activation of this plan.

### Escape

Crews shall escape upwind of escaping gas in the event of an emergency release of gas. Escape can be facilitated from the location entrance road. Crews should then block the entrance to the location from the lease road so as not to allow anyone traversing into a hazardous area. The blockade should be at a safe distance outside of the ROE. There are no homes or buildings in or near the ROE.

**Assumed 100 ppm ROE = 3000'**

**100 ppm H<sub>2</sub>S concentration shall trigger activation of this plan.**

### Emergency Procedures

In the event of a release of gas containing H<sub>2</sub>S, the first responder(s) must

- Isolate the area and prevent entry by other persons into the 100 ppm ROE.
- Evacuate any public places encompassed by the 100 ppm ROE.
- Be equipped with H<sub>2</sub>S monitors and air packs in order to control the release.
- Use the "buddy system" to ensure no injuries occur during the response
- Take precautions to avoid personal injury during this operation.
- Contact operator and/or local officials to aid in operation. See list of phone numbers attached.
- Have received training in the
  - Detection of H<sub>2</sub>S, and
  - Measures for protection against the gas,
  - Equipment used for protection and emergency response.

### **Ignition of Gas Source**

Should control of the well be considered lost and ignition considered, take care to protect against exposure to Sulfur Dioxide (SO<sub>2</sub>). Intentional ignition must be coordinated with the NMOCD and local officials. Additionally the NM State Police may become involved. NM State Police shall be the Incident Command on scene of any major release. Take care to protect downwind whenever there is an ignition of the gas

### **Characteristics of H<sub>2</sub>S and SO<sub>2</sub>**

Common Name	Chemical Formula	Specific Gravity	Threshold Limit	Hazardous Limit	Lethal Concentration
Hydrogen Sulfide	H <sub>2</sub> S	1.189 Air = 1	10 ppm	100 ppm/hr	600 ppm
Sulfur Dioxide	SO <sub>2</sub>	2.21 Air = 1	2 ppm	N/A	1000 ppm

### **Contacting Authorities**

Devon Energy Corp. personnel must liaison with local and state agencies to ensure a proper response to a major release. Additionally, the OCD must be notified of the release as soon as possible but no later than 4 hours. Agencies will ask for information such as type and volume of release, wind direction, location of release, etc. Be prepared with all information available. The following call list of essential and potential responders has been prepared for use during a release. Devon Energy Corp. Company response must be in coordination with



## **Hydrogen Sulfide Drilling Operation Plan**

### **I. HYDROGEN SULFIDE (H<sub>2</sub>S) TRAINING**

All personnel, whether regularly assigned, contracted, or employed on an unscheduled basis, will receive training from a qualified instructor in the following areas prior to commencing drilling operations on this well:

1. The hazards and characteristics of hydrogen sulfide (H<sub>2</sub>S)
2. The proper use and maintenance of personal protective equipment and life support systems.
3. The proper use of H<sub>2</sub>S detectors, alarms, warning systems, briefing areas, evacuation procedures, and prevailing winds.
4. The proper techniques for first aid and rescue procedures.

In addition, supervisory personnel will be trained in the following areas:

1. The effects of H<sub>2</sub>S metal components. If high tensile tubulars are to be used, personnel will be trained in their special maintenance requirements.
2. Corrective action and shut-in procedures when drilling or reworking a well and blowout prevention and well control procedures.
3. The contents and requirements of the H<sub>2</sub>S Drilling Operations Plan and Public Protection Plan.

There will be an initial training session just prior to encountering a known or probable H<sub>2</sub>S zone (within 3 days or 500 feet) and weekly H<sub>2</sub>S and well control drills for all personnel in each crew. The initial training session shall include a review of the site specific H<sub>2</sub>S Drilling Operations Plan and the Public Protection Plan.

### **II. HYDROGEN SULFIDE TRAINING**

Note: All H<sub>2</sub>S safety equipment and systems will be installed, tested, and operational when drilling reaches a depth of 500 feet above, or three days prior to penetrating the first zone containing or reasonably expected to contain H<sub>2</sub>S.

## **1. Well Control Equipment**

- A. Flare line
- B. Choke manifold – Remotely Operated
- C. Blind rams and pipe rams to accommodate all pipe sizes with properly sized closing unit
- D. Auxiliary equipment may include if applicable: annular preventer and rotating head.
- E. Mud/Gas Separator

## **2. Protective equipment for essential personnel:**

30-minute SCBA units located at briefing areas, as indicated on well site diagram, with escape units available in the top doghouse. As it may be difficult to communicate audibly while wearing these units, hand signals shall be utilized.

## **3. H<sub>2</sub>S detection and monitoring equipment:**

Portable H<sub>2</sub>S monitors positioned on location for best coverage and response. These units have warning lights which activate when H<sub>2</sub>S levels reach 10 ppm and audible sirens which activate at 15 ppm. Sensor locations:

- Bell nipple
- Shale shaker
- Trip tank
- Suction pit
- Rig floor
- Cellar
- Choke manifold
- Living Quarters (usually the company man's trailer stairs.)

### **Visual warning systems:**

- A. Wind direction indicators as shown on well site diagram
- B. Caution/ Danger signs shall be posted on roads providing direct access to locations. Signs will be painted a high visibility yellow with black lettering of sufficient size to be reasonable distance from the immediate location. Bilingual signs will be used when appropriate.

#### **4. Mud program:**

The mud program has been designed to minimize the volume of H<sub>2</sub>S circulated to surface. Proper mud weight, safe drilling practices and the use of H<sub>2</sub>S scavengers will minimize hazards when penetrating H<sub>2</sub>S bearing zones.

#### **5. Metallurgy:**

- A. All drill strings, casings, tubing, wellhead, blowout preventer, drilling spool, kill lines, choke manifold lines, and valves shall be H<sub>2</sub>S trim.
- B. All elastomers used for packing and seals shall be H<sub>2</sub>S trim.

#### **6. Communication:**

- A. Company personnel have/use cellular telephones in the field.
- B. Land line (telephone) communications at Office

#### **7. Well testing:**

- A. Drill stem testing will be performed with a minimum number of personnel in the immediate vicinity, which are necessary to safety and adequately conduct the test. The drill stem testing will be conducted during daylight hours and formation fluids will not be flowed to the surface. All drill-stem-testing operations conducted in an H<sub>2</sub>S environment will use the closed chamber method of testing.
- B. There will be no drill stem testing.



## Devon Energy Corp. Company Call List

<u>Artesia (575)</u>	<u>Cellular</u>	<u>Office</u>	<u>Home</u>
Foreman – Robert Bell.....	748-7448 .....	748-0178 .....	746-2991
Asst. Foreman –Tommy Polly.....	748-5290 .....	748-0165 .....	748-2846
Don Mayberry.....	748-5235 .....	748-0164 .....	746-4945
Montral Walker.....	390-5182 .....	748-0193 .....	(936) 414-6246
Engineer – Marcos Ortiz.....	(405) 317-0666...	(405) 552-8152.....	(405) 381-4350

## Agency Call List

<u>Lea</u>	<u>Hobbs</u>
<u>County</u>	Lea County Communication Authority .....393-3981
<u>(575)</u>	State Police .....392-5588
	City Police .....397-9265
	Sheriff's Office .....393-2515
	Ambulance .....911
	Fire Department .....397-9308
	LEPC (Local Emergency Planning Committee).. .....393-2870
	NMOCD.....393-6161
	US Bureau of Land Management .....393-3612

<u>Eddy</u>	<u>Carlsbad</u>
<u>County</u>	State Police ..... 885-3137
<u>(575)</u>	City Police ..... 885-2111
	Sheriff's Office ..... 887-7551
	Ambulance ..... 911
	Fire Department ..... 885-2111
	LEPC (Local Emergency Planning Committee)..... 887-3798
	US Bureau of Land Management ..... 887-6544
	NM Emergency Response Commission (Santa Fe) ..... (505) 476-9600
	24 HR ..... (505) 827-9126
	National Emergency Response Center (Washington, DC) ....(800) 424-8802

## Emergency Services

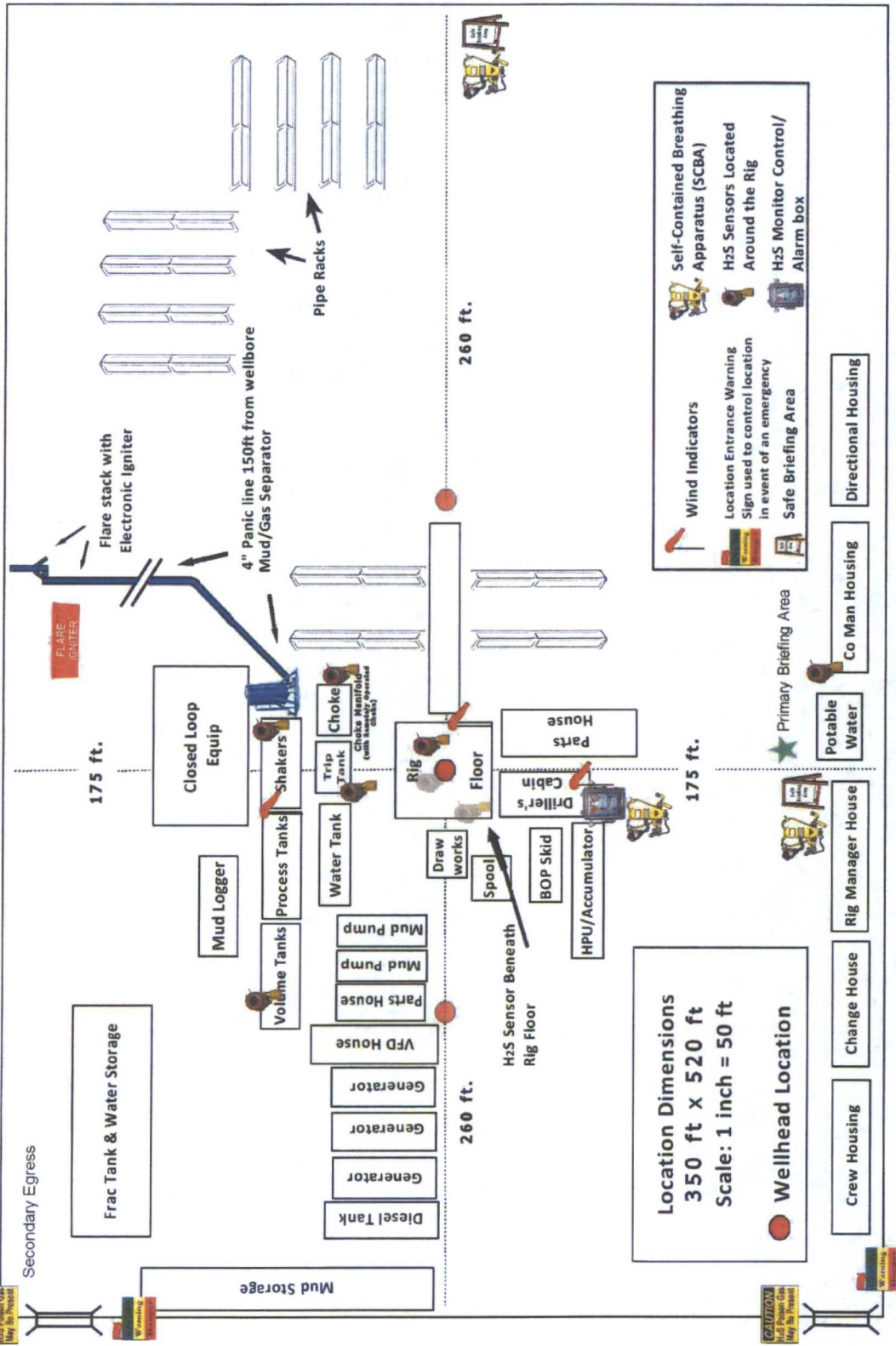
Boots & Coots IWC .....	(800)-256-9688 or (281) 931-8884
Cudd Pressure Control.....	(915) 699-0139 or (915) 563-3356
Halliburton .....	(575) 746-2757
B. J. Services.....	(575) 746-3569

<i>Give</i>	Native Air – Emergency Helicopter – Hobbs.....	(575) 392-6429
<i>GPS</i>	Flight For Life - Lubbock, TX .....	(806) 743-9911
<i>position:</i>	Aerocare - Lubbock, TX .....	(806) 747-8923
	Med Flight Air Amb - Albuquerque, NM .....	(575) 842-4433
	Lifeguard Air Med Svc. Albuquerque, NM .....	(575) 272-3115

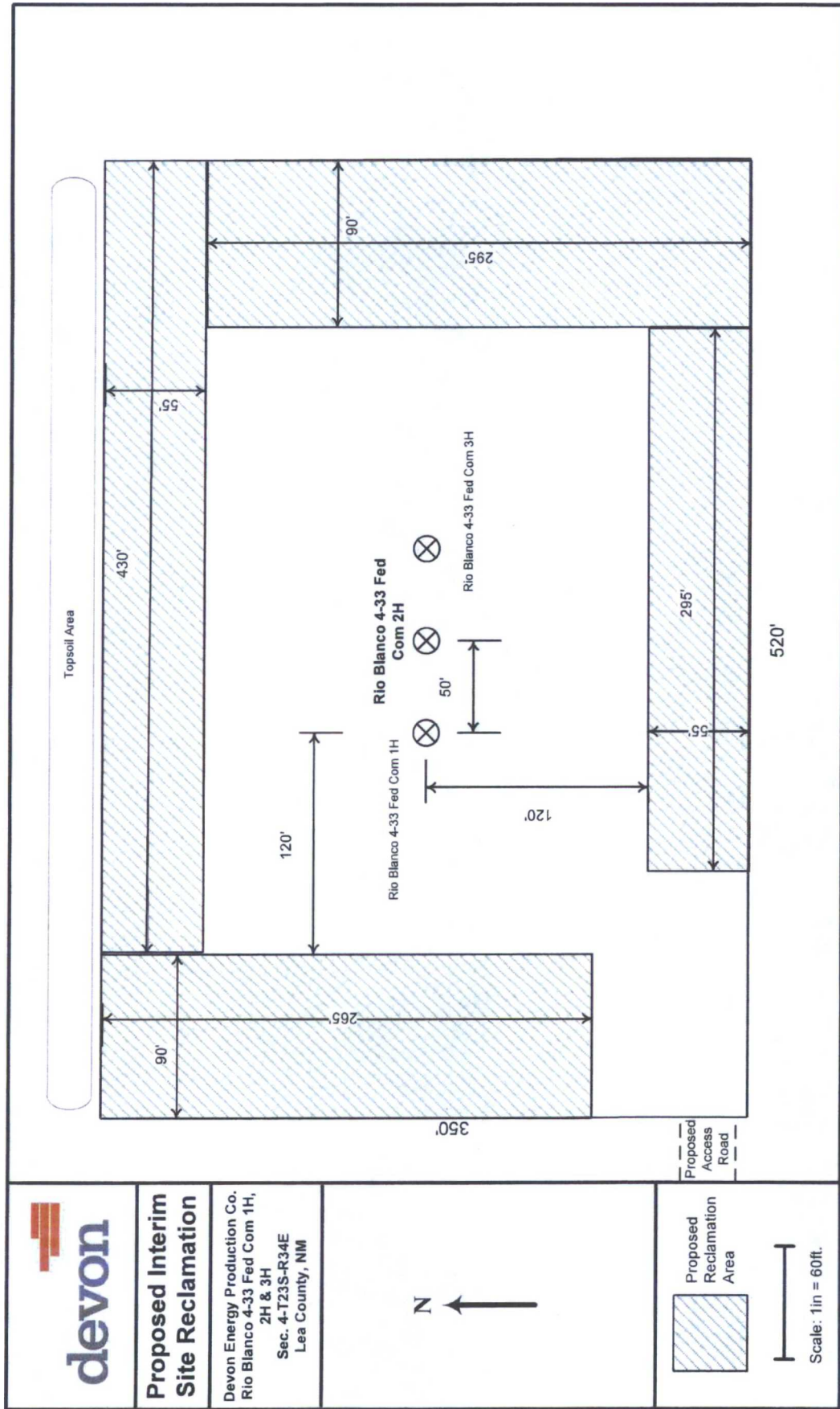
Prepared in conjunction with  
Dave Small



# Devon Energy - Well Pad Rig Location Layout Safety Equipment Location









**PROPOSED PILAT  
DELAWARE BASIN**

© 2005 by the U.S. Army Corps of Engineers. All rights reserved. This map is for illustrative purposes only and is not intended to be used as a survey and no warranty, representation, or guarantee of any kind regarding this map.

**d**

**NAO 1927 State/line New Mexico Base FIPS 3001**  
**Datum: North American 1927; Units: Foot US**

**Created by: lshart**  
**Map is current as of: 3/13/2015.**

NAD 1927 StatePlane New Mexico East FIPS 3001  
Datum: North American 1927; Units: Foot US  
Created by: lathat  
Map is current as of 3/13/2015.

**N**  
Created by: lathat  
Map is current as of 3/13/2015.

Model
Model 1
Model 2
Model 3
Model 4
Model 5
Model 6
Model 7
Model 8
Model 9
Model 10
Model 11
Model 12
Model 13
Model 14
Model 15
Model 16
Model 17
Model 18
Model 19
Model 20
Model 21
Model 22
Model 23
Model 24
Model 25
Model 26
Model 27
Model 28
Model 29
Model 30
Model 31
Model 32
Model 33
Model 34
Model 35
Model 36
Model 37
Model 38
Model 39
Model 40
Model 41
Model 42
Model 43
Model 44
Model 45
Model 46
Model 47
Model 48
Model 49
Model 50
Model 51
Model 52
Model 53
Model 54
Model 55
Model 56
Model 57
Model 58
Model 59
Model 60
Model 61
Model 62
Model 63
Model 64
Model 65
Model 66
Model 67
Model 68
Model 69
Model 70
Model 71
Model 72
Model 73
Model 74
Model 75
Model 76
Model 77
Model 78
Model 79
Model 80
Model 81
Model 82
Model 83
Model 84
Model 85
Model 86
Model 87
Model 88
Model 89
Model 90
Model 91
Model 92
Model 93
Model 94
Model 95
Model 96
Model 97
Model 98
Model 99
Model 100

1 in. = 0.1 miles

→ <all other values>

Flow Line

↑ Gds

Other

**RIO BLANCO 4-33 FED COM CTB 1**  
Proposed Flowline Route from Rio Blanco 4-33 Fed Com 1H, 2H, and 3H to the Rio Blanco 4-33 Fed Com CTB 1 Battery

23S 34E

23S 34E

Rio Blanco  
 -33 Fed Court  
 Tel. 251.041

Each well will have a 6" buried fiber pipe flowline to the tank battery. The 6" buried fiber pipe flowlines will be operated at a pressure of 750 psi or less. They will carry a mixture of oil, gas, and water. A survey and ROW will be submitted for each at a later date.