

Form 3160-3
(March 2012)

OCD Hobbs

HOBBS OCD

MAY 16 2016

RECEIVED

ATS-15-499

FORM APPROVED
OMB No. 1004-0137
Expires October 31, 2014

UNITED STATES
DEPARTMENT OF THE INTERIOR
BUREAU OF LAND MANAGEMENT

APPLICATION FOR PERMIT TO DRILL OR REENTER

| | | |
|--|--|--|
| 1a. Type of work: <input checked="" type="checkbox"/> DRILL <input type="checkbox"/> REENTER | | 5. Lease Serial No. SH: NMNM92199 NMNM92782; BH: NMNM100864 |
| 1b. Type of Well: <input checked="" type="checkbox"/> Oil Well <input type="checkbox"/> Gas Well <input type="checkbox"/> Other <input checked="" type="checkbox"/> Single Zone <input type="checkbox"/> Multiple Zone | | 6. If Indian, Allottee or Tribe Name |
| 2. Name of Operator Devon Energy Production Company, L.P. <i>u137</i> | | 7. If Unit or CA Agreement, Name and No. <i>316229</i> |
| 3a. Address 333 W. Sheridan Ave. Oklahoma City, OK 73102 | 3b. Phone No. (include area code) 405-552-7848 | 8. Lease Name and Well No. RIO BLANCO 4-33 FED COM 3H |
| 4. Location of Well (Report location clearly and in accordance with any State requirements. *) At surface 2630 FNL & 400 FWL Unit E PP: 2630 FNL & 350 FWL At proposed prod. zone 330 FNL & 350 FWL Unit D; 33-22S-34E | | 9. API Well No. <i>30-025-43246</i> |
| 14. Distance in miles and direction from nearest town or post office* Approximately 20 miles SW of Eunice, NM | | 10. Field and Pool, or Exploratory <i>GRAMA RIDGE; BS (28430)</i> |
| 15. Distance from proposed* location to nearest property or lease line, ft. (Also to nearest drig. unit line, if any) <i>See attached map</i> | 16. No. of acres in lease NMNM92199; 560 ac NMNM92782; 80.15 ac NMNM100864; 360 ac | 11. Sec., T., R. or Blk. and Survey or Area 4-23S-34E |
| 18. Distance from proposed location* to nearest well, drilling, completed, applied for, on this lease, ft. <i>See attached map</i> | 19. Proposed Depth TVD: 10,010' MD: 17,339' | 12. County or Parish LEA |
| 21. Elevations (Show whether DF, KDB, RT, GL, etc.) 3,415.8' GL | 22. Approximate date work will start* 02/02/2016 | 13. State NM |
| 23. Estimated duration 45 days | | |

24. Attachments

The following, completed in accordance with the requirements of Onshore Oil and Gas Order No. 1, must be attached to this form:

1. Well plat certified by a registered surveyor.
2. A Drilling Plan.
3. A Surface Use Plan (if the location is on National Forest System Lands, the SUPO must be filed with the appropriate Forest Service Office).
4. Bond to cover the operations unless covered by an existing bond on file (see Item 20 above).
5. Operator certification
6. Such other site specific information and/or plans as may be required by the BLM.

| | | |
|---|---------------------------------------|--------------------------|
| 25. Signature <i>[Signature]</i> | Name (Printed/Typed) David H. Cook | Date <i>3/20/2015</i> |
| Title Regulatory Specialist | | |
| Approved by (Signature) <i>/s/ JEANETTE MARTINEZ</i> | Name (Printed/Typed) | MAY 10 2016 |
| Title FIELD MANAGER | Office CARLSBAD FIELD OFFICE | |

Application approval does not warrant or certify that the applicant holds legal or equitable title to those rights in the subject lease which would entitle the applicant to conduct operations thereon.
Conditions of approval, if any, are attached.

Title 18 U.S.C. Section 1001 and Title 43 U.S.C. Section
States any false, fictitious or fraudulent statements or

(Continued on page 2)

See attached NMOCD
Conditions of Approval

APPROVAL FOR TWO YEARS
to any department or agency of the United

*(Instructions on page 2)

Capitan Controlled Water Basin

Approval Subject to General Requirements
& Special Stipulations Attached

SEE ATTACHED FOR
CONDITIONS OF APPROVAL

1. Geologic Formations

| | | | |
|---------------|---------|-------------------------------|-----|
| TVD of target | 10,010' | Pilot hole depth | N/A |
| MD at TD: | 17,339' | Deepest expected fresh water: | 85' |

REEF

[illegible]

*H₂S, water flows, loss of circulation, abnormal pressures, etc.

Devon Energy, Rio Blanco 4-33 Fed Com 3H

2. Casing Program

see COA

| Hole Size | Casing Interval | | Csg. Size | Weight (lbs) | Grade | Conn | SF Collapse | SF Burst | SF Tension |
|---------------------------|-----------------|--------------------------|-----------|--------------|--------|------|-------------|----------|--------------------|
| | From | To | | | | | | | |
| 17.5" | 0 | 2,450' 2,200' | 13.375" | 61 | J-55 | BTC | 1.41 | 2.82 | 5.77 |
| 12.25" | 0 | 4,300' | 9.625" | 40 | J-55 | BTC | 1.15 | 3.43 | 4.69 |
| 12.25" | 4,300' | 4,700' | 9.625" | 40 | HCK-55 | BTC | 1.73 | 1.62 | 4.93 |
| 8.75" | 0 | 8,400' | 7" | 29 | P-110 | BTC | 1.87 | 2.46 | 3.13 |
| 8.75" | 8,400' | 17,339' | 5.5" | 17 | P-110 | BTC | 1.54 | 1.91 | 3.00 |
| BLM Minimum Safety Factor | | | | | | | 1.125 | 1.00 | 1.6 Dry 1.8 Wet |

All casing strings will be tested in accordance with Onshore Oil and Gas Order #2 III.B.1.h

Must have table for contingency casing

| | Y or N |
|--|--------|
| Is casing new? If used, attach certification as required in Onshore Order #1 | Y |
| Does casing meet API specifications? If no, attach casing specification sheet. | Y |
| Is premium or uncommon casing planned? If yes attach casing specification sheet. | N |
| Does the above casing design meet or exceed BLM's minimum standards? If not provide justification (loading assumptions, casing design criteria). | Y |
| Will the intermediate pipe be kept at a minimum 1/3 fluid filled to avoid approaching the collapse pressure rating of the casing? | Y |
| Is well located within Capitan Reef? | Y |
| If yes, does production casing cement tie back a minimum of 50' above the Reef? | Y |
| Is well within the designated 4 string boundary. | N |
| Is well located in SOPA but not in R-111-P? | N |
| If yes, are the first 2 strings cemented to surface and 3 rd string cement tied back 500' into previous casing? | |
| Is well located in R-111-P and SOPA? | N |
| If yes, are the first three strings cemented to surface? | |
| Is 2 nd string set 100' to 600' below the base of salt? | |
| Is well located in high Cave/Karst? | N |
| If yes, are there two strings cemented to surface? | |
| (For 2 string wells) If yes, is there a contingency casing if lost circulation occurs? | |
| Is well located in critical Cave/Karst? | N |
| If yes, are there three strings cemented to surface? | |

Devon Energy, Rio Blanco 4-33 Fed Com 3H

3. Cementing Program

| Casing | # Sks | Wt. lb/ gal | H ₂ O gal/sk | Yld ft ³ / sack | 500# Comp. Strength (hours) | Slurry Description |
|----------------------------------|-------|-------------------|----------------------------|----------------------------------|--------------------------------------|--|
| 13-3/8" Surface | 1470 | 12.9 | 9.81 | 1.85 | 14 | Lead: (65:35) Class C Cement: Poz (Fly Ash): 6% BWOC Bentonite + 5% BWOW Sodium Chloride + 0.125 lbs/sack Poly-E-Flake |
| | 550 | 14.8 | 6.32 | 1.33 | 6 | Tail: Class C Cement + 0.125 lbs/sack Poly-E-Flake |
| 9-5/8" Inter. | 820 | 12.9 | 9.81 | 1.85 | 14 | Lead: (65:35) Class C Cement: Poz (Fly Ash): 6% BWOC Bentonite + 5% BWOW Sodium Chloride + 0.125 lbs/sack Poly-E-Flake |
| | 430 | 14.8 | 6.32 | 1.33 | 6 | Tail: Class C Cement + 0.125 lbs/sack Poly-E-Flake |
| 7 x 5- 1/2" Combo Prod. | 350 | 10.4 | 16.9 | 3.17 | 16 | Lead: Tuned Light ® + 0.125 lb/sk Pol-E-Flake |
| | 2090 | 14.5 | 5.31 | 1.2 | 25 | Tail: (50:50) Class H Cement: Poz (Fly Ash) + 0.5% bwoc HALAD-344 + 0.4% bwoc CFR-3 + 0.2% BWOC HR-601 + 2% bwoc Bentonite |

| Casing String | TOC | % Excess |
|------------------------------|-------|----------|
| 13-3/8" Surface | 0' | 100% |
| 9-5/8" Intermediate | 0' | 75% |
| 7 x 5-1/2" Production Casing | 4500' | 25% |

Devon Energy, Rio Blanco 4-33 Fed Com 3H

4. Pressure Control Equipment

| | |
|---|--|
| N | A variance is requested for the use of a diverter on the surface casing. See attached for schematic. |
|---|--|

| BOP installed and tested before drilling which hole? | Size? | Min. Required WP | Type | ✓ | Tested to: |
|--|---------|------------------|------------|---|-------------------------|
| 12-1/4" | 13-5/8" | 3M | Annular | x | 50% of working pressure |
| | | | Blind Ram | | 3M |
| | | | Pipe Ram | | |
| | | | Double Ram | x | |
| | | | Other* | | |
| 8-3/4" | 13-5/8" | 3M | Annular | x | 50% testing pressure |
| | | | Blind Ram | | 3M |
| | | | Pipe Ram | | |
| | | | Double Ram | x | |
| | | | Other* | | |
| | | | Annular | x | |
| | | | Blind Ram | | |
| | | | Pipe Ram | | |
| | | | Double Ram | x | |
| | | | Other* | | |

*Specify if additional ram is utilized.

BOP/BOPE will be tested by an independent service company to 250 psi low and the high pressure indicated above per Onshore Order 2 requirements. The System may be upgraded to a higher pressure but still tested to the working pressure listed in the table above. If the system is upgraded all the components installed will be functional and tested.

Pipe rams will be operationally checked each 24 hour period. Blind rams will be operationally checked on each trip out of the hole. These checks will be noted on the daily tour sheets. Other accessories to the BOP equipment will include a Kelly cock and floor safety valve (inside BOP) and choke lines and choke manifold. See attached schematics.

| | |
|---|---|
| Y | Formation integrity test will be performed per Onshore Order #2. On Exploratory wells or on that portion of any well approved for a 5M BOPE system or greater, a pressure integrity test of each casing shoe shall be performed. Will be tested in accordance with Onshore Oil and Gas Order #2 III.B.1.i. |
|---|---|

Devon Energy, Rio Blanco 4-33 Fed Com 3H

| | |
|---|---|
| Y | A variance is requested for the use of a flexible choke line from the BOP to Choke Manifold. See attached for specs and hydrostatic test chart. |
| Y | Are anchors required by manufacturer? |
| Y | <p>A multibowl wellhead is being used. The BOP will be tested per Onshore Order #2 after installation on the surface casing which will cover testing requirements for a maximum of 30 days. If any seal subject to test pressure is broken the system must be tested.</p> <p>Devon proposes using a multi-bowl wellhead assembly (FMC Uni-head). This assembly will only be tested when installed on the surface casing. Minimum working pressure of the blowout preventer (BOP) and related equipment (BOPE) required for drilling below the surface casing shoe shall be 3000 (3M) psi.</p> <ul style="list-style-type: none"> • Wellhead will be installed by FMC's representatives. • If the welding is performed by a third party, the FMC's representative will monitor the temperature to verify that it does not exceed the maximum temperature of the seal. • FMC representative will install the test plug for the initial BOP test. • FMC will install a solid steel body pack-off to completely isolate the lower head after cementing intermediate casing. After installation of the pack-off, the pack-off and the lower flange will be tested to 3M, as shown on the attached schematic. Everything above the pack-off will not have been altered whatsoever from the initial nipple up. Therefore the BOP components will not be retested at that time. • If the cement does not circulate and one inch operations would have been possible with a standard wellhead, the well head will be cut and top out operations will be conducted. • Devon will pressure test all seals above and below the mandrel (but still above the casing) to full working pressure rating. • Devon will test the casing to 0.22 psi/ft or 1500 psi, whichever is greater, as per Onshore Order #2. <p>After running the 13-3/8" surface casing, a 13-5/8" BOP/BOPE system with a minimum rating of 3M will be installed on the FMC Uni-head wellhead system and will undergo a 250 psi low pressure test followed by a 3,000 psi high pressure test. The 3,000 psi high and 250 psi low test will cover testing requirements a maximum of 30 days, as per Onshore Order #2. If the well is not complete within 30 days of this BOP test, another full BOP test will be conducted, as per Onshore Order #2.</p> <p>After running the 9-5/8" intermediate casing with a mandrel hanger, the 13-5/8" BOP/BOPE system with a minimum rating of 3M will already be installed on the FMC Uni-head.</p> <p>The pipe rams will be operated and checked each 24 hour period and each time the drill pipe is out of the hole. These tests will be logged in the daily driller's log. A 2" kill line and 3" choke line will be incorporated into the drilling spool below the ram BOP. In addition to the rams and annular preventer, additional BOP accessories include a kelly cock, floor safety valve, choke lines, and choke manifold rated at 3,000 psi WP.</p> |

Devon Energy, Rio Blanco 4-33 Fed Com 3H

| | |
|--|--|
| | Devon requests a variance to use a flexible line with flanged ends between the BOP and the choke manifold (choke line). The line will be kept as straight as possible with minimal turns |
| | See attached schematic. |

5. Mud Program

| Depth | | Type | Weight (ppg) | Viscosity | Water Loss |
|--------|---------|-----------------|--------------|-----------|------------|
| From | To | | | | |
| 0 | 2,450' | FW Gel | 8.6-8.8 | 28-34 | N/C |
| 1,350' | 4,700' | Saturated Brine | 10.0-10.2 | 28-34 | N/C |
| 4,700' | 17,339' | Cut Brine | 8.5-9.3 | 28-34 | N/C |

Sufficient mud materials to maintain mud properties and meet minimum lost circulation and weight increase requirements will be kept on location at all times.

| | |
|---|-----------------------------|
| What will be used to monitor the loss or gain of fluid? | PVT/Pason/Visual Monitoring |
|---|-----------------------------|

6. Logging and Testing Procedures

| Logging, Coring and Testing | |
|-----------------------------|---|
| x | Will run GR/CNL from TD to surface (horizontal well – vertical portion of hole). Stated logs run will be in the Completion Report and submitted to the BLM. |
| | No Logs are planned based on well control or offset log information. |
| | Drill stem test? If yes, explain |
| | Coring? If yes, explain |

| Additional logs planned | Interval |
|-------------------------|-------------------------|
| Resistivity | Int. shoe to KOP |
| Density | Int. shoe to KOP |
| X CBL | Production casing |
| X Mud log | Intermediate shoe to TD |
| PEX | |

Devon Energy, Rio Blanco 4-33 Fed Com 3H

7. Drilling Conditions

| Condition | Specify what type and where? |
|----------------------------|------------------------------|
| BH Pressure at deepest TVD | 2639 psi |
| Abnormal Temperature | No |

Mitigation measure for abnormal conditions. Describe. Lost circulation material/sweeps/mud scavengers.

| | |
|--|--------------------------------|
| Hydrogen Sulfide (H ₂ S) monitors will be installed prior to drilling out the surface shoe. If H ₂ S is detected in concentrations greater than 100 ppm, the operator will comply with the provisions of Onshore Oil and Gas Order #6. If Hydrogen Sulfide is encountered, measured values and formations will be provided to the BLM. | |
| N | H ₂ S is present |
| Y | H ₂ S Plan attached |

8. Other facets of operation

Is this a walking operation? No.

Will be pre-setting casing? No.

Attachments

☒ Directional Plan

☐ Other, describe



Rio Blanco 4-33 Fed Com 3H
Lea Co, NM



Plan Data for Rio Blanco 4-33 Fed Com 3H

| Plan Point Information: | | | | | | | | | |
|----------------------------------|-------|--------|----------|---------|---------|-----------|-----------|---------|--------|
| DogLeg Severity Unit: °/100.00ft | | | | | | | | | |
| MD | Inc | Az | TVD | +N/-S | +E/-W | Northing | Easting | VSec | DLS |
| (USft) | (°) | (°) | (USft) | (USft) | (USft) | (USft) | (USft) | (USft) | (DLSU) |
| 0.00 | 0.00 | 0.00 | 0.00 | 0.00 | 0.00 | 486169.03 | 804186.97 | 0.00 | 0.00 |
| 9437.04 | 0.00 | 0.00 | 9437.04 | 0.00 | 0.00 | 486169.03 | 804186.97 | 0.00 | 0.00 |
| 10337.04 | 90.00 | 359.23 | 10010.00 | 572.91 | -7.70 | 486741.94 | 804179.27 | 572.96 | 10.00 |
| 17338.89 | 90.00 | 359.23 | 10010.00 | 7574.12 | -101.75 | 493743.15 | 804085.22 | 7574.80 | 0.00 |

Plan Data for Rio Blanco 4-33 Fed Com 3H

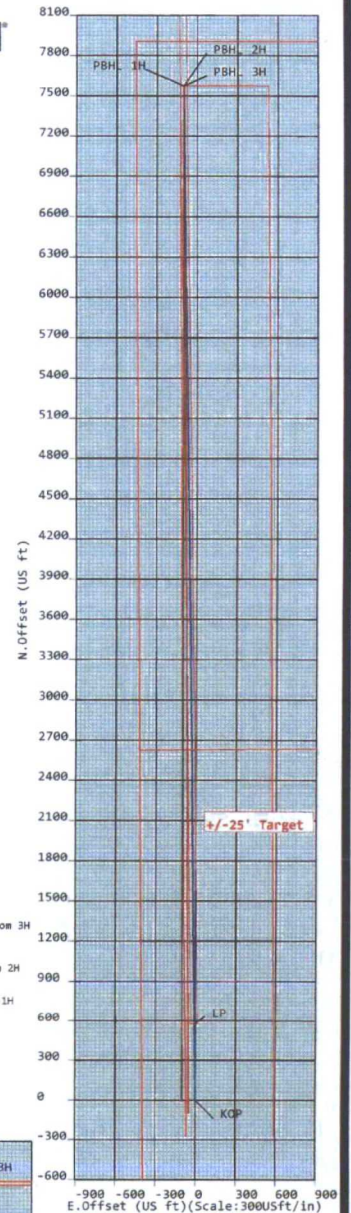
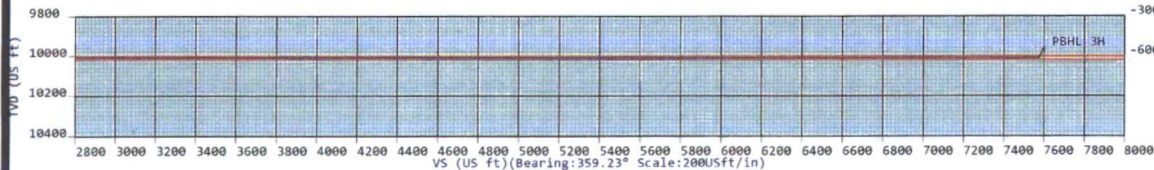
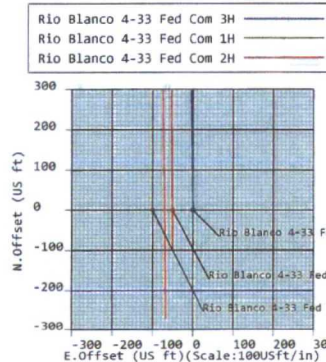
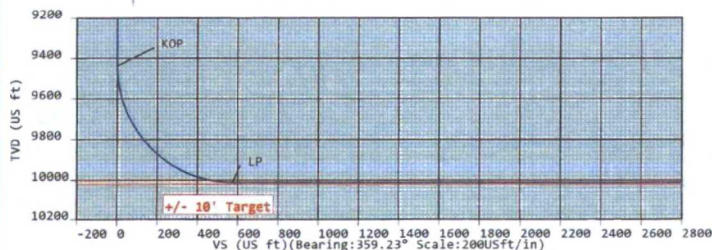
Slot: Rio Blanco 4-33 Fed Com 3H
Position:
Offset is from Site centre
+N/-S: 0.74USft Northing: 486169.03USft Latitude: 32°20'1.2"
+E/-W: 100.03USft Easting: 804186.97USft Longitude: -103°28'56.3"
Elevation Above VRD: 3416.00USft

Plan Data for Rio Blanco 4-33 Fed Com 3H

Target Set Information:
Name: Rio Blanco 4-33 Fed Com 3H
Position offsets from Slot centre
Name TVD +N/-S +E/-W Northing Easting Shape Comment
(USft) (USft) (USft) (USft) (USft)
PBHL 3H 10010.00 7574.12 -101.75 493743.15 804085.22 Cuboid

Plan Data for Rio Blanco 4-33 Fed Com 3H

Well: Rio Blanco 4-33 Fed Com 3H
Type: Main-Well
File Number:
Plan Folder: P1 Plan: P1/V1
Vertical Section: Position offset of origin from Slot centre:
+N/-S: 0.00USft Azimuth: 359.23°
+E/-W: 0.00USft
Magnetic Parameters:
Model: Field Strength: Declination: Dip: Date:
RGM 48246(nT) 7.23° 60.19° 2015-07-30



Sign Off: Russell Joyner



HOBBS OCD

MAY 16 2016

RECEIVED.

Commitment Runs Deep



Design Plan
Operation and Maintenance Plan
Closure Plan

SENM - Closed Loop Systems
February 2015

I. Design Plan

Devon uses MI SWACO closed loop system (CLS). The MI SWACO CLS is designed to maintain drill solids at or below 5%. The equipment is arranged to progressively remove solids from the largest to the smallest size. Drilling fluids can thus be reused and savings is realized on mud and disposal costs. Dewatering may be required with the centrifuges to insure removal of ultra fine solids.

The drilling location is constructed to allow storm water to flow to a central sump normally the cellar. This insures no contamination leaves the drilling pad in the event of a spill. Storm water is reused in the mud system or stored in a reserve fluid tank farm until it can be reused. All lubricants, oils, or chemicals are removed immediately from the ground to prevent the contamination of storm water. An oil trap is normally installed on the sump if an oil spill occurs during a storm.

A tank farm is utilized to store drilling fluids including fresh water and brine fluids. The tank farm is constructed on a 20 ml plastic lined, bermed pad to prevent the contamination of the drilling site during a spill. Fluids from other sites may be stored in these tanks for processing by the solids control equipment and reused in the mud system. At the end of the well the fluids are transported from the tank farm to an adjoining well or to the next well for the rig.

Prior to installing a closed-loop system on site, the topsoil, if present, will be stripped and stockpiled for use as the final cover or fill at the time of closure.

Signs will be posted on the fence surrounding the closed-loop system unless the closed-loop system is located on a site where there is an existing well, that is operated by Devon.

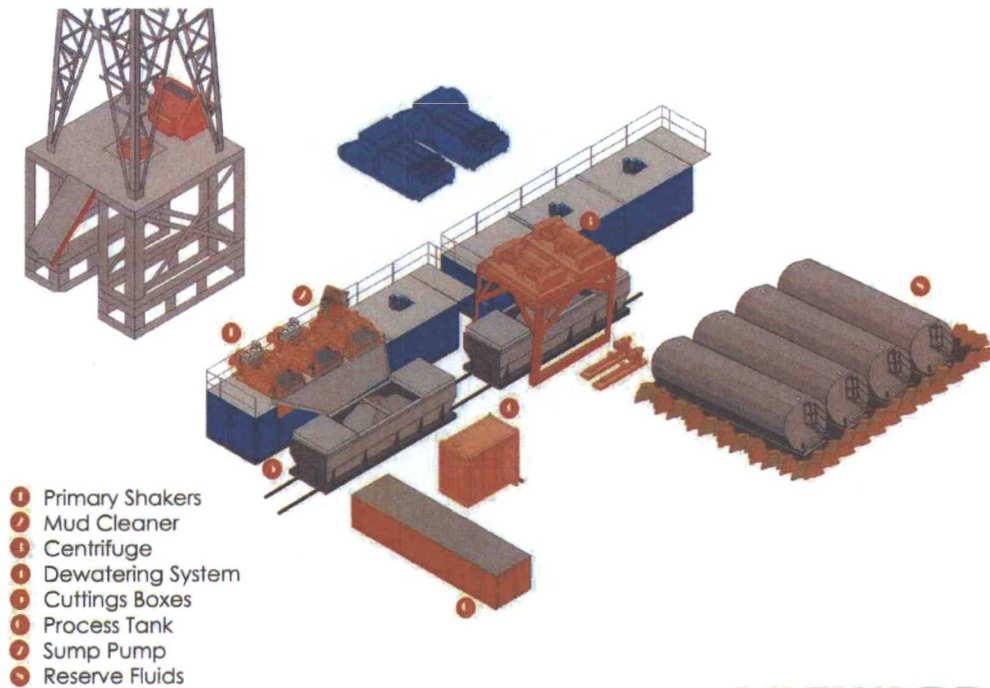
II. Operations and Maintenance Plan

Primary Shakers: The primary shakers make the first removal of drill solids from the drilling mud as it leaves the well bore. The shakers are sized to handle maximum drilling rate at optimal screen size. The shakers normally remove solids down to 74 microns.

Mud Cleaner: The Mud Cleaner cleans the fluid after it leaves the shakers. A set of hydrocyclones are sized to handle 1.25 to 1.5 times the maximum circulating rate. This ensures all the fluid is being processed to an average cut point of 25 microns. The wet discharged is dewatered on a shaker equipped with ultra fine mesh screens and generally cut at 40 microns.



Closed Loop Schematic



Centrifuges: The centrifuges can be one or two in number depending on the well geometry or depth of well. The centrifuges are sized to maintain low gravity solids at 5% or below. They may or may not need a dewatering system to enhance the removal rates. The centrifuges can make a cut point of 8-10 microns depending on bowl speed, feed rate, solids loading and other factors.

The centrifuge system is designed to work on the active system and be flexible to process incoming fluids from other locations. This set-up is also dependant on well factors.

Dewatering System: The dewatering system is a chemical mixing and dosing system designed to enhance the solids removal of the centrifuge. Not commonly used in shallow wells. It may contain pH adjustment, coagulant mixing and dosing, and polymer mixing and dosing. Chemical flocculation binds ultra fine solids into a mass that is within the centrifuge operating design. The

dewatering system improves the centrifuge cut point to infinity or allows for the return of clear water or brine fluid. This ability allows for the ultimate control of low gravity solids.

Cuttings Boxes: Cuttings boxes are utilized to capture drill solids that are discarded from the solids control equipment. These boxes are set upon a rail system that allows for the removal and replacement of a full box of cuttings with an empty one. They are equipped with a cover that insures no product is spilled into the environment during the transportation phase.

Process Tank: (Optional) The process tank allows for the holding and process of fluids that are being transferred into the mud system. Additionally, during times of lost circulation the process tank may hold active fluids that are removed for additional treatment. It can further be used as a mixing tank during well control conditions.

Sump and Sump Pump: The sump is used to collect storm water and the pump is used to transfer this fluid to the active system or to the tank for to hold in reserve. It can also be used to collect fluids that may escape during spills. The location contains drainage ditches that allow the location fluids to drain to the sump.

Reserve Fluids (Tank Farm): A series of frac tanks are used to replace the reserve pit. These are steel tanks that are equipped with a manifold system and a transfer pump. These tanks can contain any number of fluids used during the drilling process. These can include fresh water, cut brine, and saturated salt fluid. The fluid can be from the active well or reclaimed fluid from other locations. A 20 ml liner and berm system is employed to ensure the fluids do not migrate to the environment during a spill.

If a leak develops, the appropriate division district office will be notified within 48 hours of the discovery and the leak will be addressed. Spill prevention is accomplished by maintaining pump packing, hoses, and pipe fittings to insure no leaks are occurring. During an upset condition the source of the spill is isolated and repaired as soon as it is discovered. Free liquid is removed by a diaphragm pump and returned to the mud system. Loose topsoil may be used to stabilize the spill and the contaminated soil is excavated and placed in the cuttings boxes. After the well is finished and the rig has moved, the entire location is scrapped and testing will be performed to determine if a release has occurred.

All trash is kept in a wire mesh enclosure and removed to an approved landfill when full. All spent motor oils are kept in separate containers and they are removed and sent to an approved recycling center. Any spilled lubricants, pipe

dope, or regulated chemicals are removed from soil and sent to landfills approved for these products.

These operations are monitored by Mi Swaco service technicians. Daily logs are maintained to ensure optimal equipment operation and maintenance. Screen and chemical use is logged to maintain inventory control. Fluid properties are monitored and recorded and drilling mud volumes are accounted for in the mud storage farm. This data is kept for end of well review to insure performance goals are met. Lessons learned are logged and used to help with continuous improvement.

A MI SWACO field supervisor manages from 3-5 wells. They are responsible for training personnel, supervising installations, and inspecting sites for compliance of MI SWACO safety and operational policy.

III. Closure Plan

A maximum 340' X 340' caliche pad is built per well. All of the trucks and steel tanks fit on this pad. All fluid cuttings go to the steel tanks to be hauled by various trucking companies to an agency approved disposal.

H&P Flex Rig Location Layout

