

OCD Hobbs

R-111-POTASH

FORM APPROVED  
OMB No. 1004-0137  
Expires October 31, 2014UNITED STATES  
DEPARTMENT OF THE INTERIOR  
BUREAU OF LAND MANAGEMENT

## APPLICATION FOR PERMIT TO DRILL OR REENTER

HOBBS OCD

MAY 16 2016

RECEIVED

ATS-16-183

1a. Type of work: <input checked="" type="checkbox"/> DRILL <input type="checkbox"/> REENTER		5. Lease Serial No. SHL-NM13276
1b. Type of Well: <input checked="" type="checkbox"/> Oil Well <input type="checkbox"/> Gas Well <input type="checkbox"/> Other <input checked="" type="checkbox"/> Single Zone <input type="checkbox"/> Multiple Zone		6. If Indian, Allottee or Tribe Name
2. Name of Operator LEGACY RESERVES OPERATING, L. P.		7. If Unit or CA Agreement, Name and No. 302795
3a. Address P. O. BOX 10848 MIDLAND, TX. 79702	3b. Phone No. (include area code) 432-689-5200 (Steve Owen)	8. Lease Name and Well No. HAMON FED COM A 10H
4. Location of Well (Report location clearly and in accordance with any State requirements.)* At surface 320 FNL & 1045 FWL Section 18 (First Take: 330 FSL & 430 FWL, Section 7) At proposed prod. zone 330 FNL & 430 FWL Section 7 (Last take)		9. API Well No. 30-025-43251 (96637) Ka
14. Distance in miles and direction from nearest town or post office* 29 MILES SOUTHWEST OF HOBBS, NM		10. Field and Pool, or Exploratory TEAS; BONE SPRING, EAST
15. Distance from proposed* location to nearest property or lease line, ft. SHL: 320' BHL: 330' (Also to nearest drig. unit line, if any)	16. No. of acres in lease 1671.51	11. Sec., T. R. M. or Blk. and Survey or Area SHL: SECTION 18, T. 20 S., R. 34 E. BHL: SECTION 7, T. 20 S., R. 34 E.
18. Distance from proposed location* to nearest well, drilling, completed, applied for, on this lease, ft. 230' #2H	19. Proposed Depth TVD: 10,100' MD: 15,088'	12. County or Parish LEA
21. Elevations (Show whether DF, KDB, RT, GL, etc.) 3610' GL	22. Approximate date work will start* ASAP	13. State NM
17. Spacing Unit dedicated to this well 160.44		
20. BLM/BIA Bond No. on file <del>NMB001014</del> & NMB001015		
23. Estimated duration 45 DAYS		
24. Attachments		

The following, completed in accordance with the requirements of Onshore Oil and Gas Order No.1, must be attached to this form:

- |  |   |
|--|---|
| 1. Well plat certified by a registered surveyor.   | 4. Bond to cover the operations unless covered by an existing bond on file (see Item 20 above). |
| 2. A Drilling Plan.  | 5. Operator certification   |
| 3. A Surface Use Plan (if the location is on National Forest System Lands, the SUPO must be filed with the appropriate Forest Service Office). | 6. Such other site specific information and/or plans as may be required by the BLM.             |

25. Signature <i>[Signature]</i>	Name (Printed/Typed) BARRY W. HUNT	Date 9/29/15
Title PERMIT AGENT FOR LEGACY RESERVES OPERATING, L. P.		
Approved by (Signature) <i>[Signature]</i>	Name (Printed/Typed) JEANETTE MARTINEZ	Date MAY - 5 2016
Title FIELD MANAGER		Office CARLSBAD FIELD OFFICE

Application approval does not warrant or certify that the applicant holds legal or equitable title to those rights in the subject lease which would entitle the applicant to conduct operations thereon.  
Conditions of approval, if any, are attached.

APPROVAL FOR TWO YEARS

Title 18 U.S.C. Section 1001 and Title 43 U.S.C. Section 1212, make it a crime for any person to knowingly and willfully make any false, fictitious or fraudulent statements or representations to any department or agency of the United States.

any department or agency of the United States

(Continued on page 2)

See attached NMOCD  
Conditions of Approval

\*(Instructions on page 2)

Capitan Controlled Water Basin

SEE ATTACHED FOR  
CONDITIONS OF APPROVALApproval Subject to General Requirements  
& Special Stipulations Attached

## SURFACE USE AGREEMENT

The Hamon Fed Com A 5H, 6H, 7H, 8H, 9H, 10H, 11H, 12H wells are all on private surface with the same land owner. The land owner has been contacted and an agreement has been negotiated for all 8 wells.

Land Owner:

Kenneth Smith, Inc.

Attn: Wayne Smith

267 Smith Ranch Road

Hobbs, NM 88240

Phone (575) 942-8421



APPLICATION TO DRILL  
**HAMON FED COM A 10H**  
 LEGACY RESERVES OPERATING LP  
 SHL: Unit D, Section 18  
 BHL: Lot 1, Section 7  
 T20S-R34E, Lea County, New Mexico

To satisfy requirements of Onshore Oil and Gas Order No. 1, Legacy Reserves Operating LP submits the following for your consideration:

1. **Location:** SHL: 320' FNL & 1045' FWL, Sec. 18, T20S-R34E (First Take: 330 FSL & 430 FWL Sec. 7)  
 BHL: 330' FNL & 430' FWL, Sec. 7, T20S-R34E (Last Take)

2. **Elevations:** 3,610' GL

3. **Geological Name of Surface Formation:** Quaternary alluvium deposits

4. **Drilling Tools and Associated Equipment:** Rotary drilling rig using fluid as a means for removal of solid cuttings from the well.

5. **Proposed Drilling Depth:** 15,088' MD 10,100' TVD

6. **Estimated Tops of Geological Markers:**

Rustler	1,499'	Queen	4,750'
Top Salt	1,860'	Delaware/Base of Capitan Reef	5,400'
Bottom Salt	3,500'	1 st. Bone Spring	8,368'
Yates	3,350'	2 <sup>nd</sup> . Bone Spring	8,901'
Top of Capitan Reef	3,793'		
Seven Rivers	3,875'	TVD	10,100'

7. **Possible mineral bearing formations:**

Primary: Bone Spring (oil); Secondary: Delaware (oil), Queen (oil), Seven Rivers (oil), Yates (oil or gas); fresh water (~125')

8. **Proposed Mud System:**

see  
com

Depth	Mud Wt.	Visc	Fluid Loss	Type Mud
0' to 1600'	8.4-8.6	30-32	May lose circ.	Fresh water gel spud mud
1600' to 5400'	10.0-10.1	28-29	May lose circ.	Brine water
5400' to 10100'	8.7-8.8	28-29	No control	Fresh water/brine, use hi-viscosity sweeps to clean hole
10100' to 15,088'	8.7-8.8	28-29	10-12	Fresh water/brine

Sufficient mud materials will be kept on location at all times in order to combat lost circulation or unexpected kicks. Visual mud monitoring equipment will be in place to detect pit volume changes indicating loss or gain of

## **11. Cementing Information:**

### **Surface Casing** (100% excess on lead & 100% excess on tail to design for cement top at surface)

Lead: 1200 sx class C cement + 4% bwoc bentonite II + 2% bwoc calcium chloride + 0.25 lbs/sack cello flake + 0.005 gps FP-6L (13.50 ppg, 1.75 cfps, 9.13 gps wtr)

Tail: 200 sx class C cement + 1.5% bwoc calcium chloride + 0.005 lbs/sack defoamer + 0.005 gps FP-6L (14.80 ppg, 1.33 cfps, 6.35 gps wtr)

### **Intermediate Casing**

*In the event that circulation is lost (> 50%) while drilling the 12-1/4" intermediate hole in the Capitan Reef at +/-4000', we will plan to install a DV tool and external casing packer within 200' of the top depth where lost circulation occurred and will pump a two-stage cement job. If there is no lost circulation a single stage cementing procedure will be followed. Legacy plans to cement to surface regardless of whether a single stage or 2-stage procedure.*

### **No DV tool** (80% excess on lead & 80% excess on tail to design for cement top at surface)

Lead: 1400 sx (35:65) poz (fly ash) class C cement+ 4% bwoc bentonite II + 5% bwoc MPA-5 + 0.25% bwoc FL- 52 + 5 lbs/sack LCM-1 + 0.125 lbs/sk cello flake+ 0.005 lbs/sk defoamer + 0.005 gps FP-6L + 1.2% bwoc Sodium Metasilicate + 5% bwow Sodium Chloride (12.5 ppg, 2.13 cfps, 8.81 gps wtr)

Tail: 200 sx class C cement (14.80 ppg, 1.33 cfps, 6.35 gps wtr)

### **With DV Tool** (100% excess on lead & 100% excess on tail to design for cement top at surface)

*DV Tool set @ approx. 3800'*

#### **Stage 1**

Lead: 400 sx (35:65) paz (fly ash) class C cement+ 4% bwoc Bentonite II+ 5% bwoc MPA-5 + 0.25% bwoc FL- 52 + 5 lbs/sack LCM-1 + 0.125 lbs/sk cello flake+ 0.005 lbs/sk defoamer + 0.005 gps FP-6L + 1.2% bwoc Sodium Metasilicate + 5% bwow Sodium Chloride (12.5 ppg, 2.13 cfps, 8.81 gps wtr)

Tail: 200 sx class C cement (14.80 ppg, 1.33 cfps, 6.35 gps wtr)

#### **Stage 2**

Lead: 1100 sx (35:65) paz {fly ash) class C cement+ 4% bwoc bentonite II + 5% bwoc MPA-5 + 0.25% bwoc FL-52 + 5 lbs/sack LCM-1 + 0.125 lbs/sk Cello Flake+ 0.005 lbs/sk Static Free+ 0.005 gps FP-6L + 1.2% bwoc Sodium Metasilicate + 5% bwow Sodium Chloride (12.5 ppg, 2.13 cfps, 8.81 gps wtr)

Tail: 200 sx class C cement (14.80 ppg, 1.33 cfps, 6.35 gps wtr)

### **Production Casing** (80% excess on lead & 20% excess on tail to design for cement top at surface)

Lead: 1800 sx (50:50) paz (fly ash) class H cement + 10% bwoc bentonite II + 5% bwow sodium chloride + 5 pps LCM-1 + 0.005 lbs/sk Static Free+ 0.005 gps FP-6L (11.90 ppg, 2.38 cfps, 13.22 gps wtr)

Tail: 1200 sx Class H (15:61:11) poz (fly ash) class H cement: CSE-2 + 4% bwow sodium chloride+ 3 pps LCM-1 + 0.6% bwoc FL-25 + 0.005 gps FP-6L + 0.005% bwoc defoamer (13.20 ppg, 1.62 cfps, 9.45 gps wtr)



circulating mud fluids. In order to effectively run open hole logs and casing, the mud viscosity and fluid loss properties may be adjusted.

9. **Proposed Drilling Plan:**

Set surface and intermediate casing and cement to surface. Drill 8-3/4" hole to 10,100', kick off and drill 8-3/4" hole to TD of ~15,088'. Set 5-1/2" casing from surface to TD (~15,088'). Cement 5-1/2" production casing back to surface.

10. **Casing Information:**

See COA

String	Hole size	Depth	Casing OD	Collar	Weight	Grade
Surface	17-1/2"	1600' MD	New 13-3/8"	STC	54.5#	J-55
Intermediate	12-1/4"	4000' MD	New 9-5/8"	LTC	40#	J-55
Intermediate	12-1/4"	5400' MD	New 9-5/8"	LTC	40#	HCK-55
Production	8-3/4"	15,088' MD	New 5-1/2"	BTC	20#	P-110

5-1/2", P-110:

Collapse Factor: 1.55  
Burst Factor: 1.29  
Tension Factor: 3.06

9-5/8", HCK-55

Collapse Factor: 1.28  
Burst Factor: 2.03  
Tension Factor: 3.33

9-5/8, J-55

Collapse Factor: 1.24  
Burst Factor: 1.82  
Tension Factor: 3.12

13-3/8, J-55

Collapse Factor: 3.08  
Burst Factor: 3.54  
Tension Factor: 5.66

11. **Cementing Information:**

**Surface Casing (100% excess on lead & 100% excess on tail to design for cement top at surface):**

Lead: 1100 sxs class C cement + 4% bentonite + 0.25 pps celloflakes + 0.005 gps FP-6L + 2% calcium chloride (13.50 ppg, 1.75 cfps, 9.16 gps wtr).

Tail: 400 sxs class C cement + 0.005 gps FP-6L + 0.5% calcium chloride (14.80 ppg, 1.33 cfps, 6.33 gps wtr).

**Intermediate Casing (50% excess on lead & 50% excess on tail to design for cement top at surface):**

Lead: 900 sxs (50:50) poz (fly ash) class C cement + 10% bentonite + 5% sodium chloride + 0.25 pps cello flakes + 0.1% FL-52A + 0.005 gps FP-6L (11.90 ppg, 2.37 cf/sx, 13.52 gps wtr).

Tail: 325 sxs class C cement + 0.2% R-3 + 0.005 gps FP-6L (14.80 ppg, 1.33 cfps, 6.31 gps wtr).

**Production Casing (25% excess on lead & 25% excess on tail to design for cement top at surface):**

Lead: 1000 sxs (50:50) poz (fly ash) class H cement + 6% bentonite + 5% sodium chloride + 5 pps LCM-1 + 0.7% sodium metasilicate + 0.5% R-21 + 0.45% FL-52A + 0.005 gps FP-6L (11.90 ppg, 2.31 cf/sx, 12.60 gps wtr).

Tail: 1300 sxs (15:61:11) poz (fly ash) class C cement CSE-2 + 4% sodium chloride + 3 pps LCM-1 + 0.6% FL-25 + 0.6 FL-52A + 0.2% sodium metasilicate + 0.15% R-21 + 0.005 gps FP-6L (13.20 ppg, 1.63 cf/sx, 7.98 gps wtr).



In the event that circulation is lost while drilling the 12-1/4" intermediate hole in the Capitan Reef at +/- 4000', we will plan to install a DV tool and external casing packer within 200' of the top depth where lost circulation occurred and will pump a two-stage cement job using the same lead and tail cement slurries as specified in the single stage cement job. The cement volumes for the two-stage job will be calculated using 100% excess above normal hole volume.

There will be lead and tail slurries for each of the two stages of the 2-stage cementing jobs on the 9 5/8" intermediate casing. Legacy only plans to pump a 2-stage cementing procedure on the 9 5/8" intermediate casing if we lose circulation in the Capitan Reef. If there is no lost circulation a single stage cementing procedure will be followed. Legacy plans to cement to surface regardless of whether a single stage or 2-stage procedure.

**12. Pressure Control Eqpt/BOP:**

Legacy Reserves plans to use a 13-5/8" 5000-psi working pressure BOP system consisting of a double ram BOP with one ram being pipe and one ram being blind, a 5000-psi annular type preventer, a 5000-psi choke manifold and 80 gallon accumulator with floor, five remote operating stations and an auxiliary power system. A rotating head will be utilized as needed. A drill string safety valve in the open position will be available on the rig floor. A mud gas separator will be available for use if needed.

**A 3M BOP will be used to drill from the surface casing shoe (~1600') to the intermediate casing shoe (~5400'). The BOP will be a 5M system, however the "A" section wellhead will be a 3M wellhead (see attached BOP Diagram).**

The BOP unit will be hydraulically operated. The BOP will be operated at least once per day while drilling and the blind rams will be operated when out of hole during trips. No abnormal pressure or temperature is expected while drilling.

The BOPs will be tested by an independent service company to 250 psi low and 5000 psi high.

**13. Testing, Logging, and Coring Program:**

- A. Mud logging program: 2 man unit from approximately after setting the intermediate casing.
- B. No open hole logs, DST's or cores are planned.

**14. Potential Hazards**

No abnormal pressures or temperatures are expected during the drilling of this well. If H2S is encountered the operator will comply with provisions of Onshore Order 6. Since there will be an H2S Safety package on location, attached is an "H2S Drilling Operations Plan". Adequate flare lines will be installed on the mud/gas separator so gas may be flared safely. All personnel will be familiar with all aspects of safe operations of equipment being used. Lost circulation may occur and a cement contingency plan is included in this plan along with mud materials to be kept on location at all times in order to combat lost circulation or unexpected kicks. Estimated BHP: 4444 psi, estimated BHT: 170°F.

**15. Road and Location**

Road and location construction will begin after BLM approval of the APD. Drilling is expected to take 30-35 days and an additional 10 days for the completion.

16. **Additional Requirements of Project:**

Completion: The targeted Bone Spring pay zone will be perforated and stimulated in multiple stages using acid and hydraulic fracturing treatments. Fresh water used in the drilling and completion of this well will be transferred from off-site via temporary flowlines and stored in frac tanks on the location.





Legacy Reserves

Project: Lea County, NM (NAD-27 2015)

Site: Hamon Fed Com A #10H

Well: Hamon Fed Com A #10H

Wellbore: Lateral #1

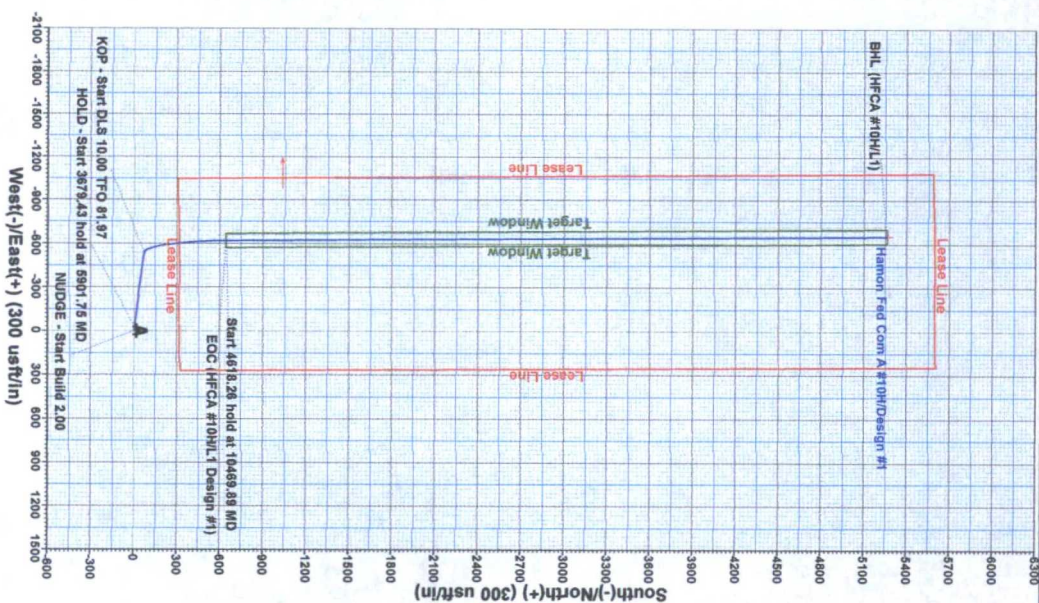
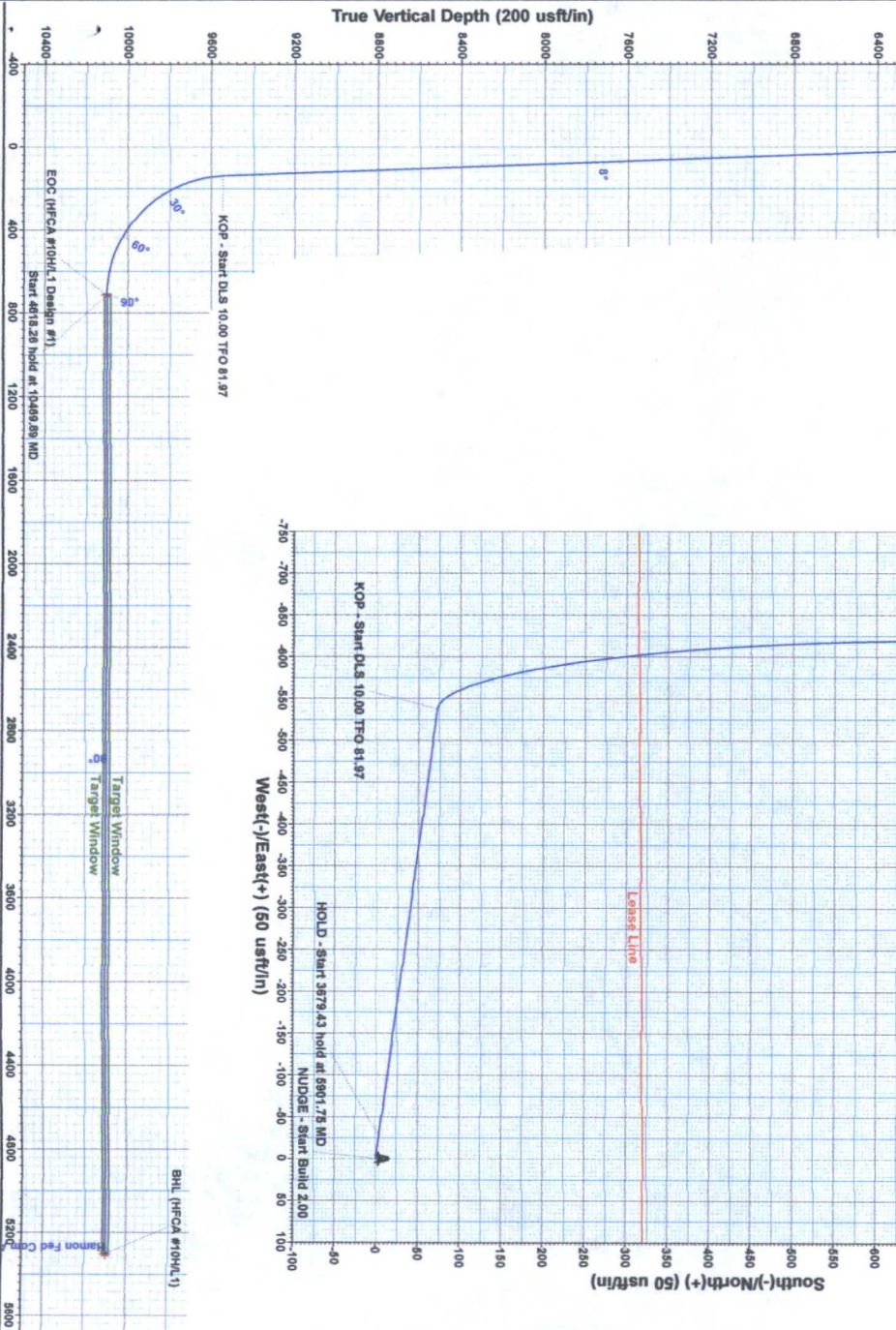
Plan: Design #1 (Hamon Fed Com A #10H/Lateral #1)



Magnetic Field  
Strength: 48342.65nT  
Dip Angle: 60.41°  
Date: 7/18/2015  
Model: IGRF2015

#### Section Details

Sec	MD	Inc	Azi	TVD	+N/S	+E/W	Dip	Tface	Vsect	Target
1	0.00	0.00	0.00	0.00	0.00	0.00	0.00	0.00	0.00	
2	5500.00	0.00	0.00	5500.00	0.00	0.00	0.00	0.00	0.00	
3	5901.75	8.03	277.70	5900.43	3.77	-27.87	2.00	277.70	7.17	
4	9581.18	8.03	277.70	9543.74	72.68	-537.54	0.00	0.00	138.21	
5	10469.89	90.00	359.59	10100.00	644.96	-619.33	10.00	81.97	716.21	
6	15058.14	90.00	359.59	10100.00	5263.10	-652.00	0.00	0.00	5303.33	BHL (HFCA #10H/L1)



WELL DETAILS: Hamon Fed Com A #10H

Ground Elevation: 3610.00

RKB Elevation: KB @ 3628.00usft (McVay 4)

Rig Name: McVay 4

Northing 676266.90 Easting 724664.70 Latitude 32° 34' 45.742 N Longitude 103° 36' 16.500 W



Plan: Design #1 (Hamon Fed Com A #10H/Lateral #1)  
dated By: Well Planner Date: 14:20, September 27 2015

3705 South County Road 1210, Midland, TX 79706  
Office: (432) 618-1210

PROJECT DETAILS: Lea County, NM (NAD-27 2015)  
Geodetic System: US State Plane 1927 (Exact solution)  
Datum: NAD 1927 (NADCON CONUS)  
Ellipsoid: Clarke 1866  
Zone: New Mexico East 3001  
System Datum: Mean Sea Level  
Local North: Grid