

DISTRICT I
1825 N. French Dr., Hobbs, NM 88240

DISTRICT II
1301 W. Grand Avenue, Artesia, NM 88200

DISTRICT III
1000 Rio Brazos Rd., Artesia, NM 87410

DISTRICT IV
1220 S. St. Francis Dr., Santa Fe, NM 87505

State of New Mexico
Energy, Minerals & Natural Resources Department
OIL CONSERVATION DIVISION
1220 South St. Frances Dr.
Santa Fe, NM 87505

Form C-102
Revised October 12, 2005
Submit to Appropriate District Office
State Lease - 4 Copies
Fee Lease - 3 Copies

☐ AMENDED REPORT

WELL LOCATION AND ACREAGE DEDICATION PLAT

API Number 30-025-43253	Pool Code 96637	Pool Name TEAS; Bone Spring, East
Property Code 302795	Property Name HAMON FED COM A	Well Number 12H
OGRID No. 240974	Operator Name LEGACY RESERVES OPERATING LP	Elevation 3610'

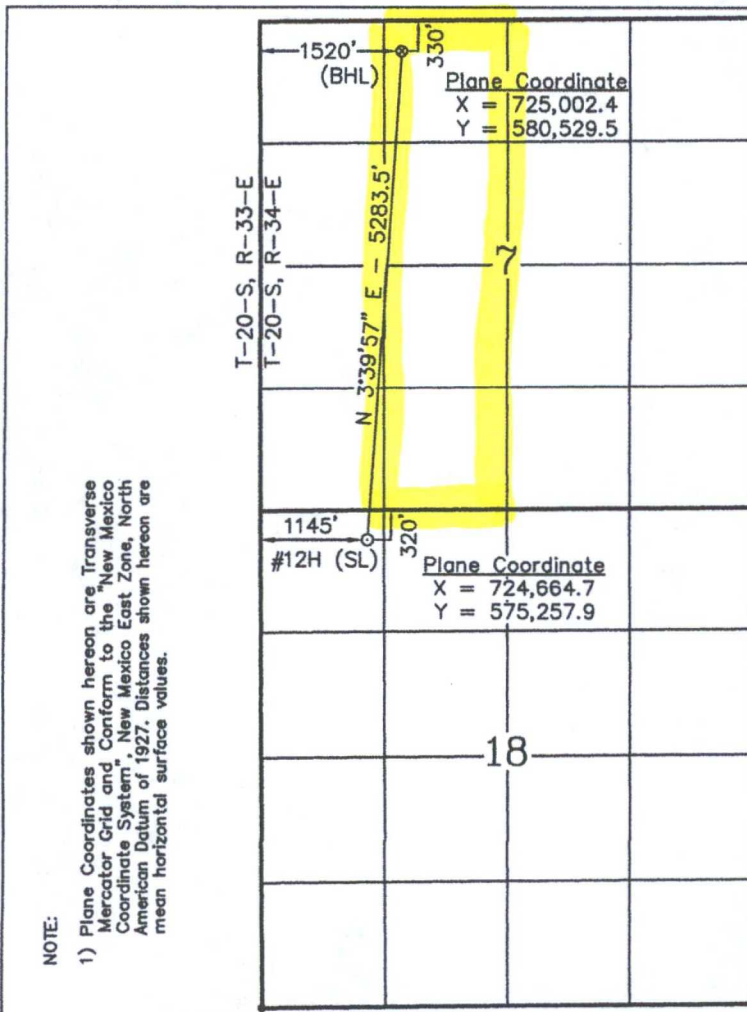
Surface Location

UL or lot No.	Section	Township	Range	Lot Idn	Feet from the	North/South line	Feet from the	East/West line	County
1	18	20 S	34 E		320	NORTH	1145	WEST	LEA

Bottom Hole Location If Different From Surface

UL or lot No.	Section	Township	Range	Lot Idn	Feet from the	North/South line	Feet from the	East/West line	County
C	7	20 S	34 E		330	NORTH	1520	WEST	LEA
Dedicated Acres 160	Joint or Infill	Consolidation Code	Order No.						

NO ALLOWABLE WILL BE ASSIGNED TO THIS COMPLETION UNTIL ALL INTERESTS HAVE BEEN CONSOLIDATED OR A NON-STANDARD UNIT HAS BEEN APPROVED BY THE DIVISION



OPERATOR CERTIFICATION

I hereby certify the the information contained herein is true and complete to the best of my knowledge and belief, and that this organization either owns a working interest or unleased mineral interest in the land including the proposed bottom hole location or has a right to drill this well at this location pursuant to a contract with an owner of such a mineral or working interest, or to a voluntary pooling agreement or a compulsory pooling order heretofore entered by the division.

Barry W. Hunt
Signature Date
Barry W. Hunt
Printed Name

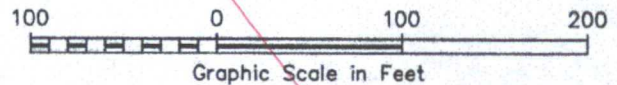
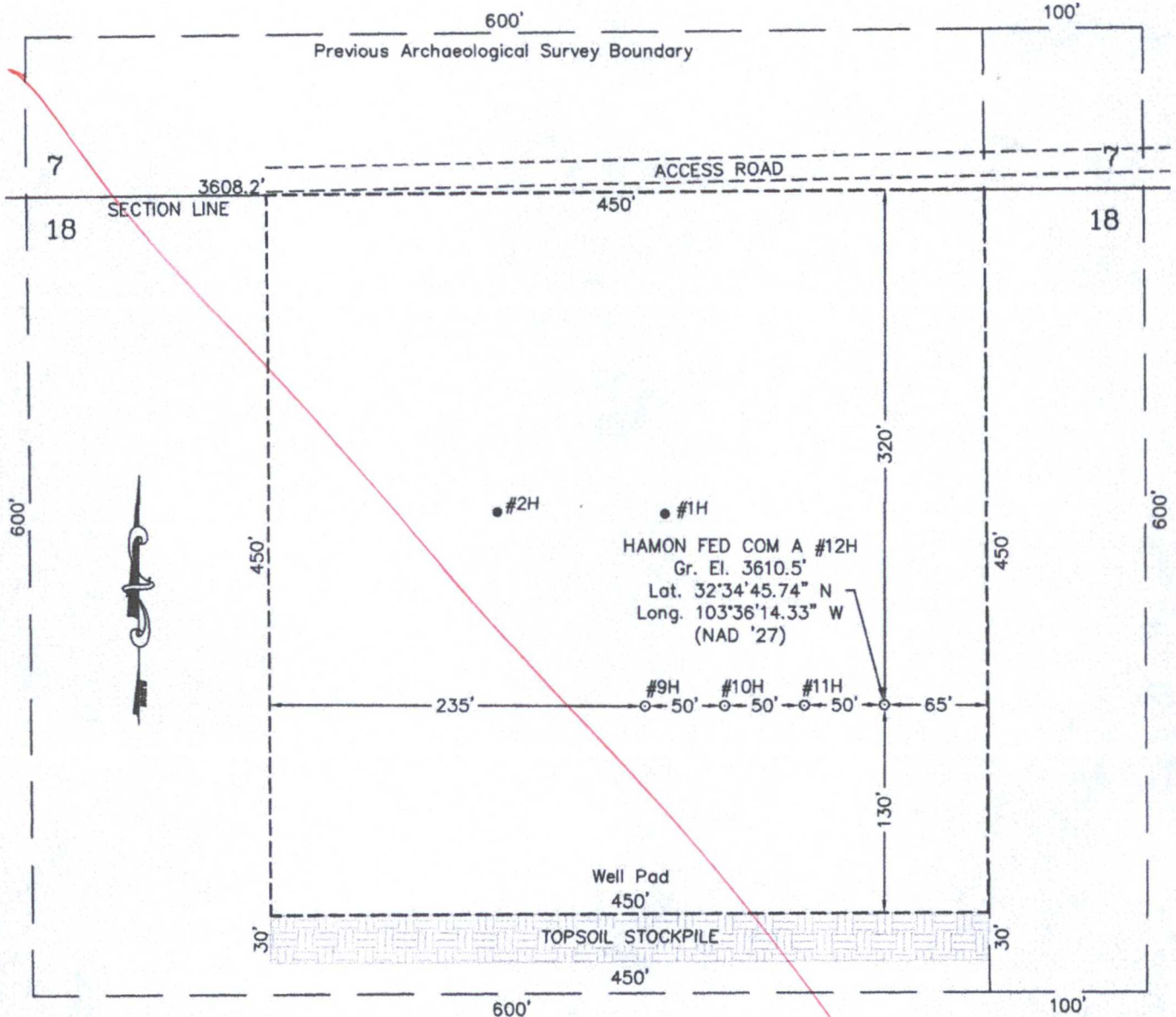
SURVEYOR CERTIFICATION

I hereby certify that the well location shown on this plat was plotted from field notes of actual surveys made by me or under my supervision and that the same is true and correct to the best of my belief.

Date of Survey
Signature & Seal of Professional Surveyor
Certificate No. MACON McDONALD 12185

SECTION 18, TOWNSHIP 20 SOUTH, RANGE 34 EAST, N.M.P.M.
LEA COUNTY NEW MEXICO

L-2015-0491-H



DRIVING DIRECTIONS

FROM THE INTERSECTION OF STATE HIGHWAY 18 AND U.S. HIGHWAY 62-180 IN HOBBS, NEW MEXICO, GO WEST AND SOUTHWEST ON U.S. HIGHWAY 62-180 28.5 MILES TO LEASE ROAD ON SOUTH (LEFT) SIDE OF THE HIGHWAY, THEN GO SOUTH 1.6 MILES TO ANOTHER LEASE ROAD ON THE WEST (RIGHT) SIDE OF THE ROAD, THEN GO WEST 0.8 MILE TO THE PROPOSED LOCATION.

LEGACY RESERVES OPERATING LP

HAMON FED COM A #12H

Located 320' FNL & 1145' FWL, Section 18
Township 20 South, Range 34 East, N.M.P.M.
Lea County, New Mexico

Drawn By: LVA / SC	Date: July 15, 2015
Scale: 1" = 100'	Field Book: 559 / 58-59
Revision Date: 8-20-2015	Quadrangle: Lea
W.O. No: 2015-0491	Dwg. No.: L-2015-0491-H



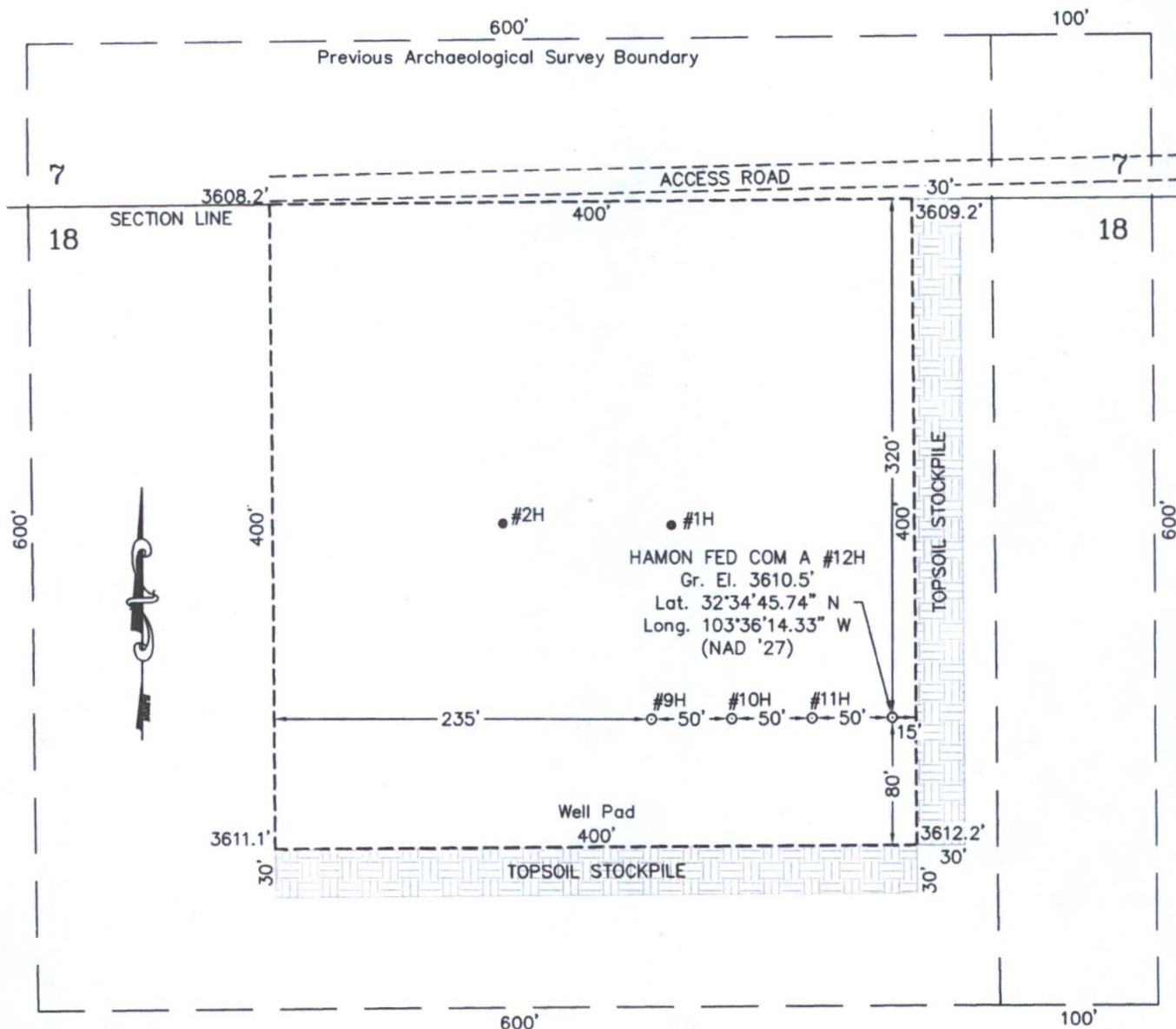
FIRM REGISTRATION NUMBER: 100682-00
110 W. LOUISIANA, STE. 110
MIDLAND TEXAS, 79701
(432) 687-0865 - (432) 687-0868 FAX

SECTION 18, TOWNSHIP 20 SOUTH, RANGE 34 EAST, N.M.P.M.

LEA COUNTY

NEW MEXICO

L-2015-0491-H



DRIVING DIRECTIONS

FROM THE INTERSECTION OF STATE HIGHWAY 18 AND U.S. HIGHWAY 62-180 IN HOBBS, NEW MEXICO, GO WEST AND SOUTHWEST ON U.S. HIGHWAY 62-180 28.5 MILES TO LEASE ROAD ON SOUTH (LEFT) SIDE OF THE HIGHWAY, THEN GO SOUTH 1.6 MILES TO ANOTHER LEASE ROAD ON THE WEST (RIGHT) SIDE OF THE ROAD, THEN GO WEST 0.8 MILE TO THE PROPOSED LOCATION.

LEGACY RESERVES OPERATING LP

HAMON FED COM A #12H

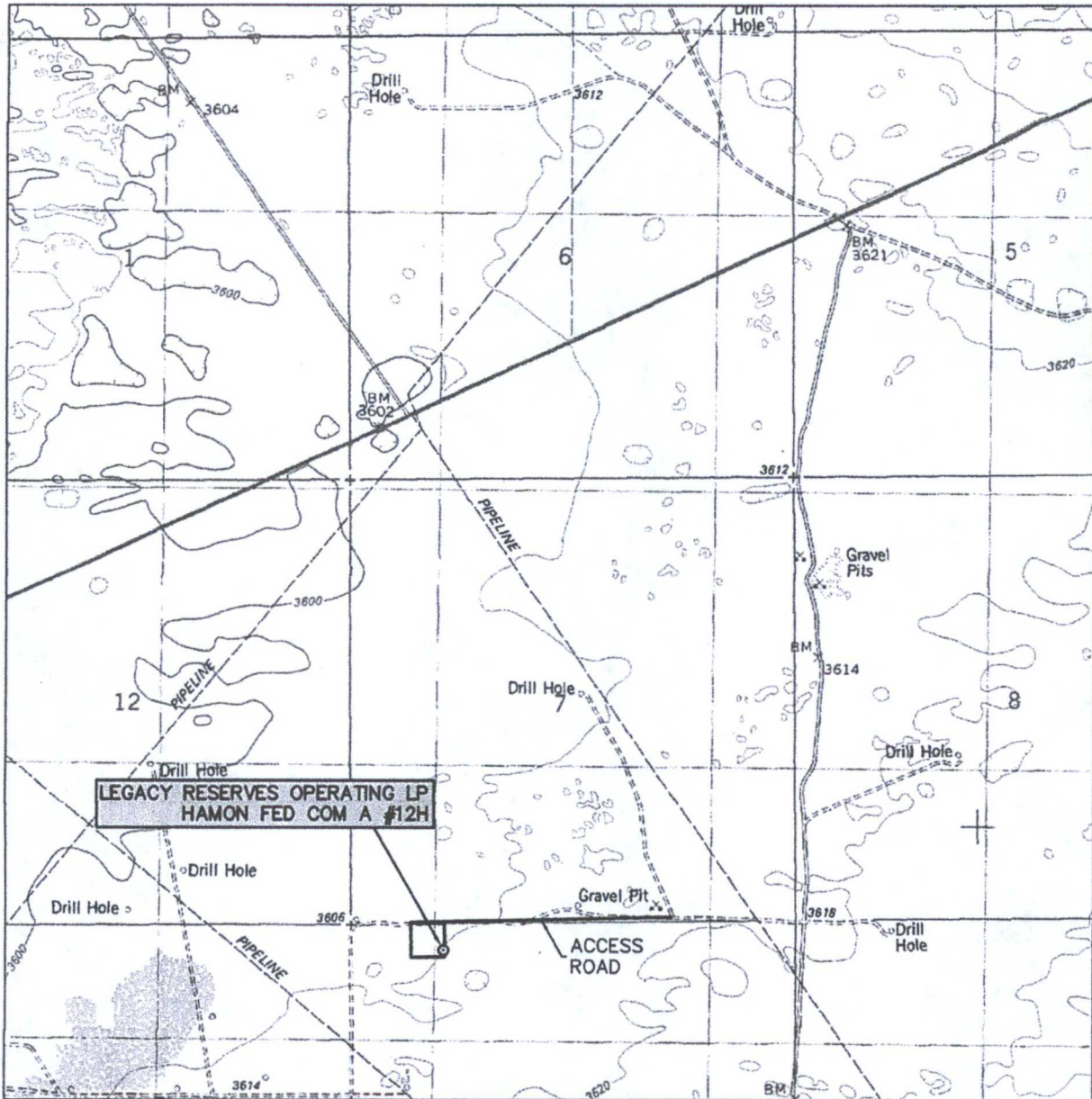
Located 320' FNL & 1145' FWL, Section 18
Township 20 South, Range 34 East, N.M.P.M.
Lea County, New Mexico



FIRM REGISTRATION NUMBER: 100682-00
110 W. LOUISIANA, STE. 110
MIDLAND TEXAS, 79701
(432) 687-0865 - (432) 687-0868 FAX

Drawn By: LVA / SC	Date: July 15, 2015
Scale: 1" = 100'	Field Book: 559 / 58-59
Revision Date: 7-22-2015	Quadrangle: Lea
W.O. No: 2015-0491	Dwg. No.: L-2015-0491-H

LOCATION VERIFICATION MAP



SCALE: 1" = 2000'

CONTOUR INTERVAL:
LEA - 10'

SEC. 18 TWP. 20-S RGE. 34-E

SURVEY N.M.P.M.

COUNTY LEA

DESCRIPTION 320' FNL & 1145' FWL

ELEVATION 3610'

OPERATOR LEGACY RESERVES OPERATING LP

LEASE LEA UNIT

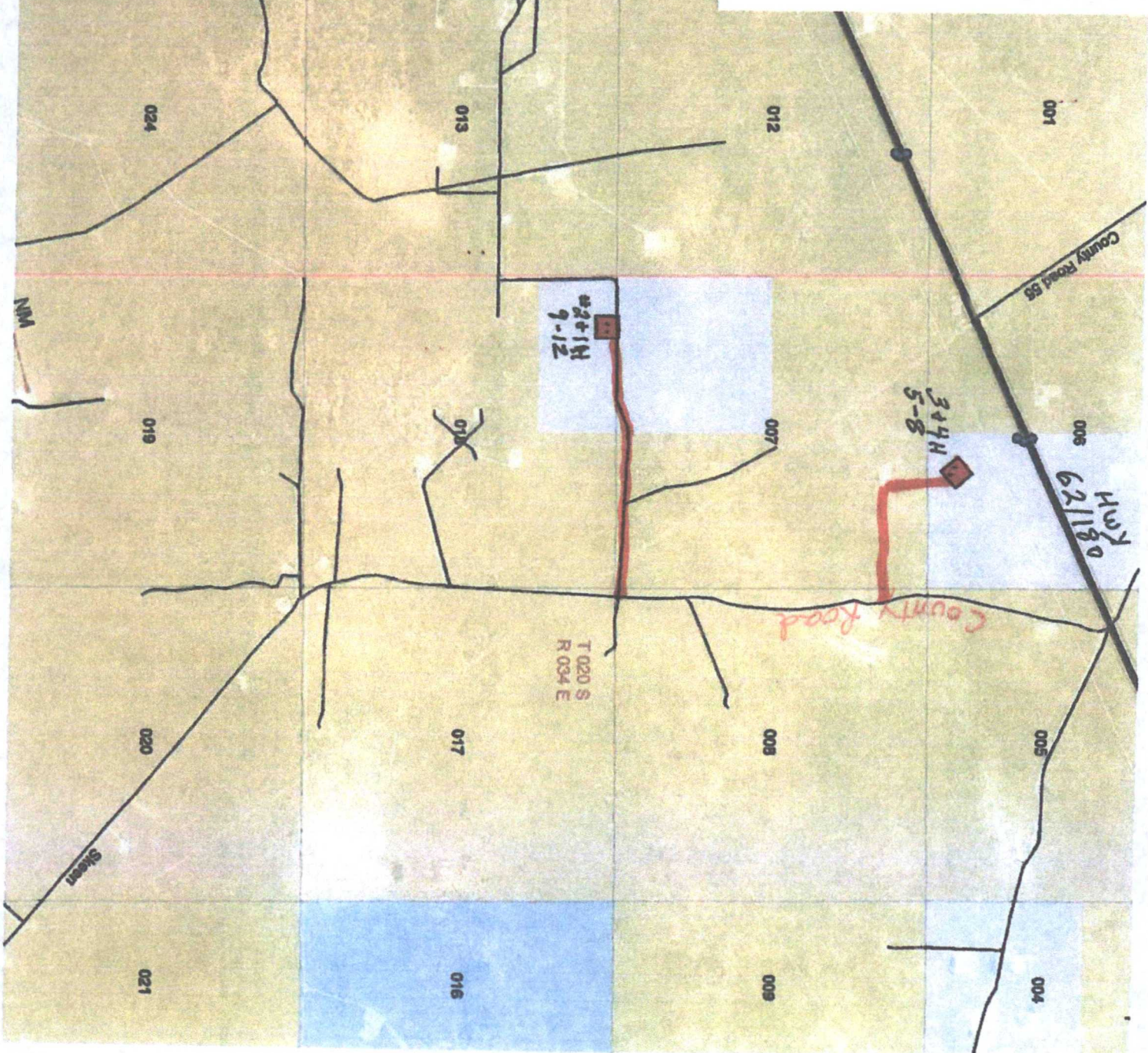
U.S.G.S. TOPOGRAPHIC MAP
LEA



**WEST
COMPANY**
of Midland, LLC

FIRM REGISTRATION NUMBER: 100682-00
110 W. LOUISIANA, STE. 110
MIDLAND TEXAS, 79701
(432) 687-0865 - (432) 687-0868 FAX

Access

$$2.125'' = 1 \text{ mile}$$


12#

2.125" = 1 mile

