

UNITED STATES
DEPARTMENT OF THE INTERIOR
BUREAU OF LAND MANAGEMENT

HOBBS OCD

FORM APPROVED

OMB No. 1004-0137

Expires: July 31, 2011

APR 05 2016

WELL COMPLETION OR RECOMPLETION REPORT AND LOG

5. Lease Serial No.
NMNM113966

RECEIVED

6. If Indian, Allottee or Tribe Name

7. Unit or CA Agreement Name and No.

8. Lease Name and Well No.
CHARRO FEDERAL 1H9. API Well No.
30-025-4279410. Field and Pool, or Exploratory
WC-025 G-07 S243225C11. Sec., T., R., M., or Block and Survey
or Area Sec 23 T24S R32E Mer NMP12. County or Parish
LEA13. State
NM17. Elevations (DF, KB, RT, GL)*
3584 GL1a. Type of Well ☒ Oil Well ☐ Gas Well ☐ Dry ☐ Other
b. Type of Completion ☒ New Well ☐ Work Over ☐ Deepen ☐ Plug Back ☐ Diff. Resvr.
Other2. Name of Operator
XTO ENERGY, INCContact: STEPHANIE RABADUE
E-Mail: stephanie_rabadue@xtoenergy.com3. Address 500 W. ILLINOIS ST STE 100
MIDLAND, TX 797013a. Phone No. (include area code)
Ph: 432-620-6714

4. Location of Well (Report location clearly and in accordance with Federal requirements)*

At surface 170FSL 660FWL

At top prod interval reported below 734FSL 669FWL

At total depth 194FNL 664FWL

14. Date Spudded
10/13/201515. Date T.D. Reached
10/31/201516. Date Completed
☐ D & A ☒ Ready to Prod.
11/24/201518. Total Depth: MD
TVD 15655
1037219. Plug Back T.D.: MD
TVD 15562
1037220. Depth Bridge Plug Set: MD
TVD21. Type Electric & Other Mechanical Logs Run (Submit copy of each)
CBL/CCL22. Was well cored? ☒ No ☐ Yes (Submit analysis)
Was DST run? ☒ No ☐ Yes (Submit analysis)
Directional Survey? ☐ No ☒ Yes (Submit analysis)

23. Casing and Liner Record (Report all strings set in well)

Hole Size	Size/Grade	Wt. (#/ft.)	Top (MD)	Bottom (MD)	Stage Cementer Depth	No. of Sk. & Type of Cement	Slurry Vol. (BBL)	Cement Top*	Amount Pulled
17.500	13.375 J-55	54.5	0	1165		1030		0	0
12.250	9.625 J-55	40.0	0	4855		1560		0	0
8.750	5.500 HCP-110	17.0	0	15655		894		4880	0

24. Tubing Record

Size	Depth Set (MD)	Packer Depth (MD)	Size	Depth Set (MD)	Packer Depth (MD)	Size	Depth Set (MD)	Packer Depth (MD)
2.875	10340	10340						

25. Producing Intervals

Formation	Top	Bottom	Perforated Interval	Size	No. Holes	Perf. Status
A) 2ND BONE SPRING	10157	10997	10300 TO 15511			PRODUCING
B)						
C)						
D)						

26. Perforation Record

27. Acid, Fracture, Treatment, Cement Squeeze, Etc.

Depth Interval	Amount and Type of Material
11300 TO 15511	FRAC WELL IN 15 STAGES W/5,398,940LBS 20/40 OTTOWA SAND; 76,417GALS WATER; 16,758GALS HCL 10-30% ACD

28. Production - Interval A

Date First Produced	Test Date	Hours Tested	Test Production	Oil BBL	Gas MCF	Water BBL	Oil Gravity Corr. API	Gas Gravity	Production Method
11/26/2015	12/17/2015	24	→	472.0	705.0	594.0	44.5		FLOW FROM WELL
Choke Size	Tbg. Press. Flwg.	Csg. Press.	24 Hr. Rate	Oil BBL	Gas MCF	Water BBL	Gas:Oil Ratio	Well Status	
22/64	SI 950	0.0	→	472	705	594	1493	POW	

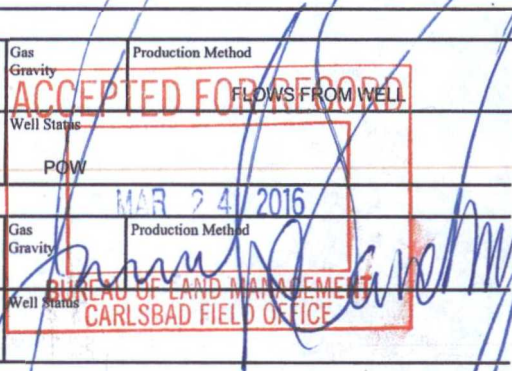
28a. Production - Interval B

Date First Produced	Test Date	Hours Tested	Test Production	Oil BBL	Gas MCF	Water BBL	Oil Gravity Corr. API	Gas Gravity	Production Method
			→						
Choke Size	Tbg. Press. Flwg.	Csg. Press.	24 Hr. Rate	Oil BBL	Gas MCF	Water BBL	Gas:Oil Ratio	Well Status	
	SI		→						

(See Instructions and spaces for additional data on reverse side)

ELECTRONIC SUBMISSION #331155 VERIFIED BY THE BLM WELL INFORMATION SYSTEM

** OPERATOR-SUBMITTED ** OPERATOR-SUBMITTED ** OPERATOR-SUBMITTED **



28b. Production - Interval C

Date First Produced	Test Date	Hours Tested	Test Production →	Oil BBL	Gas MCF	Water BBL	Oil Gravity Corr. API	Gas Gravity	Production Method
Choke Size	Tbg. Press. Flwg. SI	Csg. Press.	24 Hr. Rate →	Oil BBL	Gas MCF	Water BBL	Gas:Oil Ratio	Well Status	

28c. Production - Interval D

Date First Produced	Test Date	Hours Tested	Test Production →	Oil BBL	Gas MCF	Water BBL	Oil Gravity Corr. API	Gas Gravity	Production Method
Choke Size	Tbg. Press. Flwg. SI	Csg. Press.	24 Hr. Rate →	Oil BBL	Gas MCF	Water BBL	Gas:Oil Ratio	Well Status	

29. Disposition of Gas(Sold, used for fuel, vented, etc.)

FLARED

30. Summary of Porous Zones (Include Aquifers):

Show all important zones of porosity and contents thereof: Cored intervals and all drill-stem tests, including depth interval tested, cushion used, time tool open, flowing and shut-in pressures and recoveries.

31. Formation (Log) Markers

Formation	Top	Bottom	Descriptions, Contents, etc.	Name	Top Meas. Depth
RUSTLER	0	1065	WATER		
CASTILLE	1066	4639	SALT		
DELAWARE	4640	4878	OIL, GAS & WATER		
CHERRY CANYON	4879	5815	OIL, GAS & WATER		
BRUSHY CANYON	5816	7559	OIL, GAS & WATER		
BONE SPRING	7560	10156	OIL, GAS & WATER		
2ND BONE SPRING	10157	10997	OIL, GAS & WATER		

32. Additional remarks (include plugging procedure):

33. Circle enclosed attachments:

- | | | | |
|---|--------------------|---------------|-----------------------|
| 1. Electrical/Mechanical Logs (1 full set req'd.) | 2. Geologic Report | 3. DST Report | 4. Directional Survey |
| 5. Sundry Notice for plugging and cement verification | 6. Core Analysis | 7 Other: | |

34. I hereby certify that the foregoing and attached information is complete and correct as determined from all available records (see attached instructions):

Electronic Submission #331155 Verified by the BLM Well Information System.
For XTO ENERGY, INC, sent to the Hobbs
Committed to AFMSS for processing by JENNIFER SANCHEZ on 03/24/2016 ()

Name (please print) STEPHANIE RABADUE

Title REGULATORY ANALYST

Signature (Electronic Submission)

Date 02/10/2016

Title 18 U.S.C. Section 1001 and Title 43 U.S.C. Section 1212, make it a crime for any person knowingly and willfully to make to any department or agency of the United States any false, fictitious or fraudulent statements or representations as to any matter within its jurisdiction.

**** ORIGINAL ** ORIGINAL ** ORIGINAL ** ORIGINAL ** ORIGINAL ** ORIGINAL ** ORIGINAL ****

Revisions to Operator-Submitted EC Data for Well Completion #331155

	Operator Submitted	BLM Revised (AFMSS)
Lease:	NMNM113966	NMNM113966
Agreement:		
Operator:	XTO ENERGY, INC 500 W. ILLINOIS ST STE 100 MIDLAND, TX 79701 Ph: 432-620-6700	XTO ENERGY INCORPORATED 500 W ILLINOIS STREET SUITE 100 MIDLAND, TX 79701 Ph: 432.620-6700
Admin Contact:	STEPHANIE RABADUE REGULATORY ANALYST E-Mail: stephanie_rabadue@xtoenergy.com Ph: 432-620-6714	STEPHANIE RABADUE REGULATORY ANALYST Ph: 432.620.6714
Tech Contact:	STEPHANIE RABADUE REGULATORY ANALYST E-Mail: stephanie_rabadue@xtoenergy.com Ph: 432-620-6714	STEPHANIE RABADUE REGULATORY ANALYST Ph: 432.620.6714
Well Name: Number:	CHARRO FEDERAL 1H	CHARRO FEDERAL 1H
Location: State: County: S/T/R: Surf Loc:	NM LEA Sec 23 T24S R32E Mer NMP 170FSL 660FWL	NM LEA Sec 23 T24S R32E Mer NMP SWSW 170FSL 660FWL
Field/Pool:	WC-025 G-07 S243225C	WC-025 G07 S243225C
Logs Run:	CBL/CCL	CBL CCL
Producing Intervals - Formations:	2ND BONE SPRING	BONE SPRING LOWER BONE SPRING 2ND
Porous Zones:	RUSTLER CASTILLE DELAWARE CHERRY CANYON BRUSHY CANYON BONE SPRING 2ND BONE SPRING	RUSTLER CASTILE DELAWARE CHERRY CANYON BRUSHY CANYON BONE SPRING BONE SPRING 2ND
Markers:		