

NM OIL CONSERVATION ARTESIA DISTRICT

Form C-102

District I
1625 N. French Dr., Hobbs, NM 88240
Phone: (575) 393-6161 Fax: (575) 393-0720
District II
811 S. First St., Artesia, NM 88210
Phone: (575) 748-1283 Fax: (575) 748-9720
District III
1000 Rio Brazos Road, Aztec, NM 87410
Phone: (505) 334-6178 Fax: (505) 334-6170
District IV
1220 S. St. Francis Dr., Santa Fe, NM 87505
Phone: (505) 476-3460 Fax: (505) 476-3462

State of New Mexico
Energy, Minerals & Natural Resources Department
OIL CONSERVATION DIVISION
1220 South St. Francis Dr.
Santa Fe, NM 87505

MAY 16 2016

Revised August 1, 2011

Submit one copy to appropriate
District Office

RECEIVED

☐ AMENDED REPORT

WELL LOCATION AND ACREAGE DEDICATION PLAT

¹ API Number 30-025-43267	² Pool Code 97892	³ Pool Name WC-025 G-06 S263407P; UPR BONE SPRING
⁴ Property Code 315691	⁵ Property Name FIGHTING OKRA 18-19 FED	
⁷ OGRID No. 6137	⁸ Operator Name DEVON ENERGY PRODUCTION COMPANY, L.P.	
		⁶ Well Number 31H
		⁹ Elevation 3357.5

Surface Location

UL or lot no.	Section	Township	Range	Lot Idn	Feet from the	North/South line	Feet from the	East/West line	County
E/ 2	18	26 S	34 E		2310	NORTH	330	WEST	LEA

Bottom Hole Location If Different From Surface

UL or lot no.	Section	Township	Range	Lot Idn	Feet from the	North/South line	Feet from the	East/West line	County
M/ 4	19	26 S	34 E		330	SOUTH	330	WEST	LEA

¹² Dedicated Acres 243.17	¹³ Joint or Infill	¹⁴ Consolidation Code	¹⁵ Order No.
--	-------------------------------	----------------------------------	-------------------------

No allowable will be assigned to this completion until all interests have been consolidated or a non-standard unit has been approved by the division.

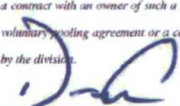
PP: 2360 FSL & 430 FWL; Sec. 18, T.26S, R.34E

<p>NW CORNER SEC. 18 LAT. = 32.0506923°N LONG. = 103.5175349°W NMSP EAST (FT) N = 383134.75 E = 794089.79</p> <p>W/4 CORNER SEC. 18 LAT. = 32.0434328°N LONG. = 103.5175361°W NMSP EAST (FT) N = 380493.86 E = 794109.39</p> <p>SECTION CORNER LAT. = 32.0361689°N LONG. = 103.5175372°W NMSP EAST (FT) N = 377851.35 E = 794129.02</p> <p>W/4 CORNER SEC. 19 LAT. = 32.0289053°N LONG. = 103.5175382°W NMSP EAST (FT) N = 375208.95 E = 794148.86</p> <p>SW CORNER SEC. 19 LAT. = 32.0216520°N LONG. = 103.5175419°W NMSP EAST (FT) N = 372570.28 E = 794167.44</p>		<p>N/4 CORNER SEC. 18 LAT. = 32.0506978°N LONG. = 103.5089724°W NMSP EAST (FT) N = 383156.93 E = 796742.73</p> <p>40.41 AC. - BLM SURFACE LOCATION 330'</p> <p>SEC. 18</p> <p>FIGHTING OKRA 18-19 FED 31H ELEV. = 3357.5' LAT. = 32.0443444°N (NAD83) LONG. = 103.5164710°W NMSP EAST (FT) N = 380827.97 E = 794436.89</p> <p>QUARTER CORNER LAT. = 32.0361573°N LONG. = 103.5089841°W NMSP EAST (FT) N = 377867.23 E = 796779.49</p> <p>NOTE: LATITUDE AND LONGITUDE COORDINATES ARE SHOWN USING THE NORTH AMERICAN DATUM OF 1983 (NAD83). LISTED NEW MEXICO STATE PLANE EAST COORDINATES ARE GRID (NAD83). BASIS OF BEARING AND DISTANCES USED ARE NEW MEXICO STATE PLANE EAST COORDINATES MODIFIED TO THE SURFACE.</p> <p>SEC. 19</p> <p>BOTTOM OF HOLE LAT. = 32.0225605°N LONG. = 103.5164769°W NMSP EAST (FT) N = 372593.27 E = 794495.02</p> <p>40.61 AC. - BLM BOTTOM OF HOLE 330'</p> <p>S/4 CORNER SEC. 19 LAT. = 32.0216642°N LONG. = 103.5089104°W NMSP EAST (FT) N = 372595.02 E = 796842.57</p>		<p>NE CORNER SEC. 18 LAT. = 32.0506993°N LONG. = 103.5004452°W NMSP EAST (FT) N = 383177.75 E = 799384.71</p> <p>E/4 CORNER SEC. 18 LAT. = 32.0434462°N LONG. = 103.5004355°W NMSP EAST (FT) N = 380539.17 E = 799408.06</p> <p>SECTION CORNER LAT. = 32.0361972°N LONG. = 103.5004293°W NMSP EAST (FT) N = 377902.09 E = 799430.33</p> <p>E/4 CORNER SEC. 19 LAT. = 32.0289377°N LONG. = 103.5004198°W NMSP EAST (FT) N = 375261.22 E = 799453.63</p> <p>SE CORNER SEC. 19 LAT. = 32.0215783°N LONG. = 103.5004145°W NMSP EAST (FT) N = 372620.35 E = 799475.65</p>	
--	--	---	--	--	--

17 OPERATOR CERTIFICATION

I hereby certify that the information contained herein is true and complete to the best of my knowledge and belief, and that this organization either owns a working interest or leased mineral interest in the land including the proposed bottom hole location or has a right to drill this well at this location pursuant to a contract with an owner of such a mineral or working interest, or to a voluntary pooling agreement or a compulsory pooling order heretofore entered by the division.

11/11/2015

Signature:  Date

Printed Name: **David H. Cook**

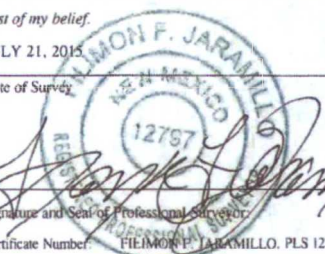
E-mail Address: **david.cook@dmv.com**


18 SURVEYOR CERTIFICATION

I hereby certify that the well location shown on this plat was plotted from field notes of actual surveys made by me or under my supervision, and that the same is true and correct to the best of my belief.

JULY 21, 2015

Date of Survey

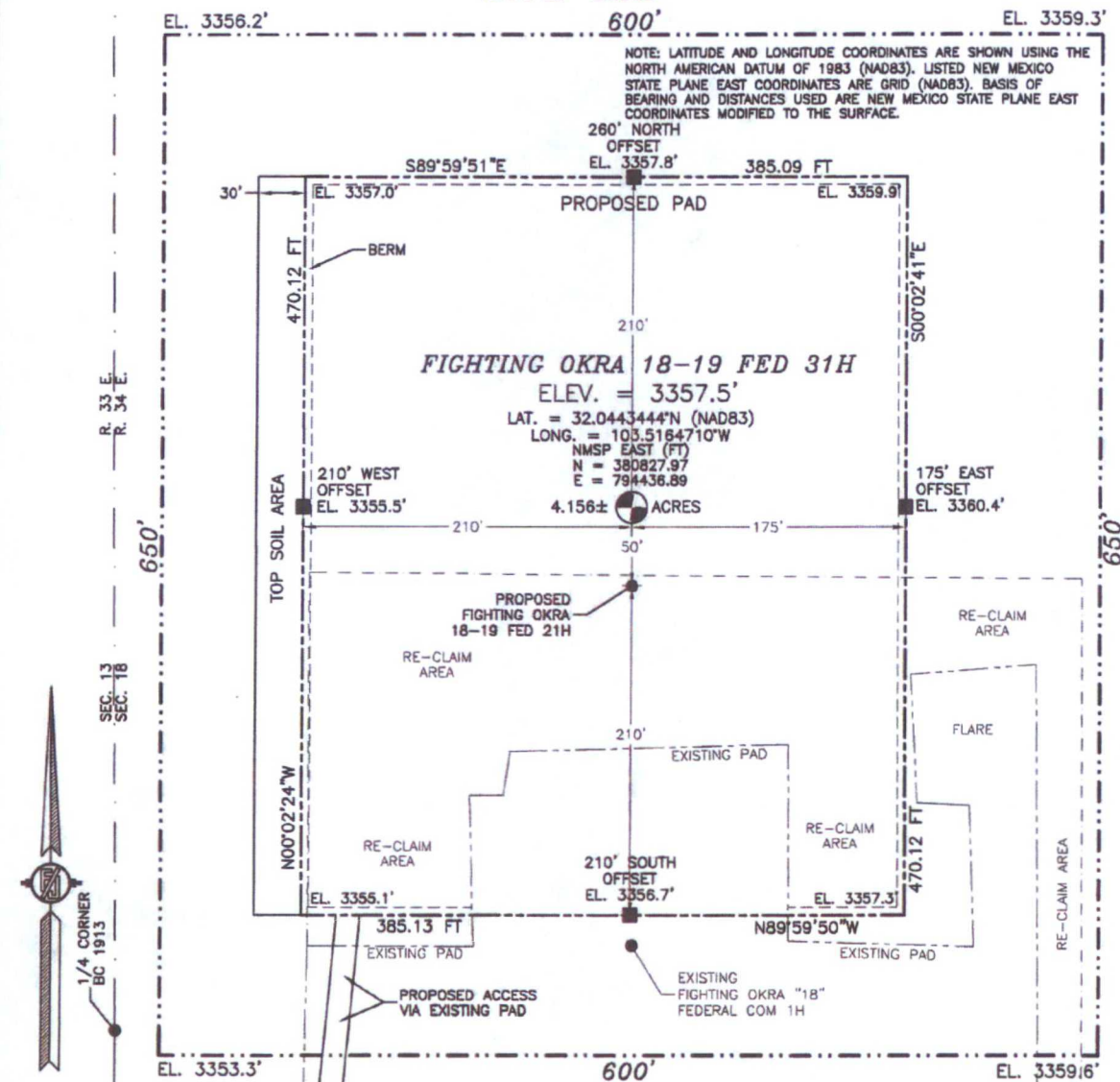


Signature and Seal of Professional Surveyor: 

Certificate Number: **FILIMON F. JARAMILLO, PLS 12787**

SURVEY NO. 3789A

SECTION 18, TOWNSHIP 26 SOUTH, RANGE 34 EAST, N.M.P.M.
LEA COUNTY, STATE OF NEW MEXICO
SITE MAP



DEVON ENERGY PRODUCTION COMPANY, L.P.
FIGHTING OKRA 18-19 FED 31H
LOCATED 2310 FT. FROM THE NORTH LINE
AND 330 FT. FROM THE WEST LINE OF
SECTION 18, TOWNSHIP 26 SOUTH,
RANGE 34 EAST, N.M.P.M.
LEA COUNTY, STATE OF NEW MEXICO

JULY 21, 2015

SURVEY NO. 3789A

MADRON SURVEYING, INC. 301 SOUTH CANAL (575) 234-3341 CARLSBAD, NEW MEXICO

SECTION 18, TOWNSHIP 26 SOUTH, RANGE 34 EAST, N.M.P.M.
LEA COUNTY, STATE OF NEW MEXICO
LOCATION VERIFICATION MAP



USGS QUAD MAP:
PADUCA BREAKS EAST

NOT TO SCALE

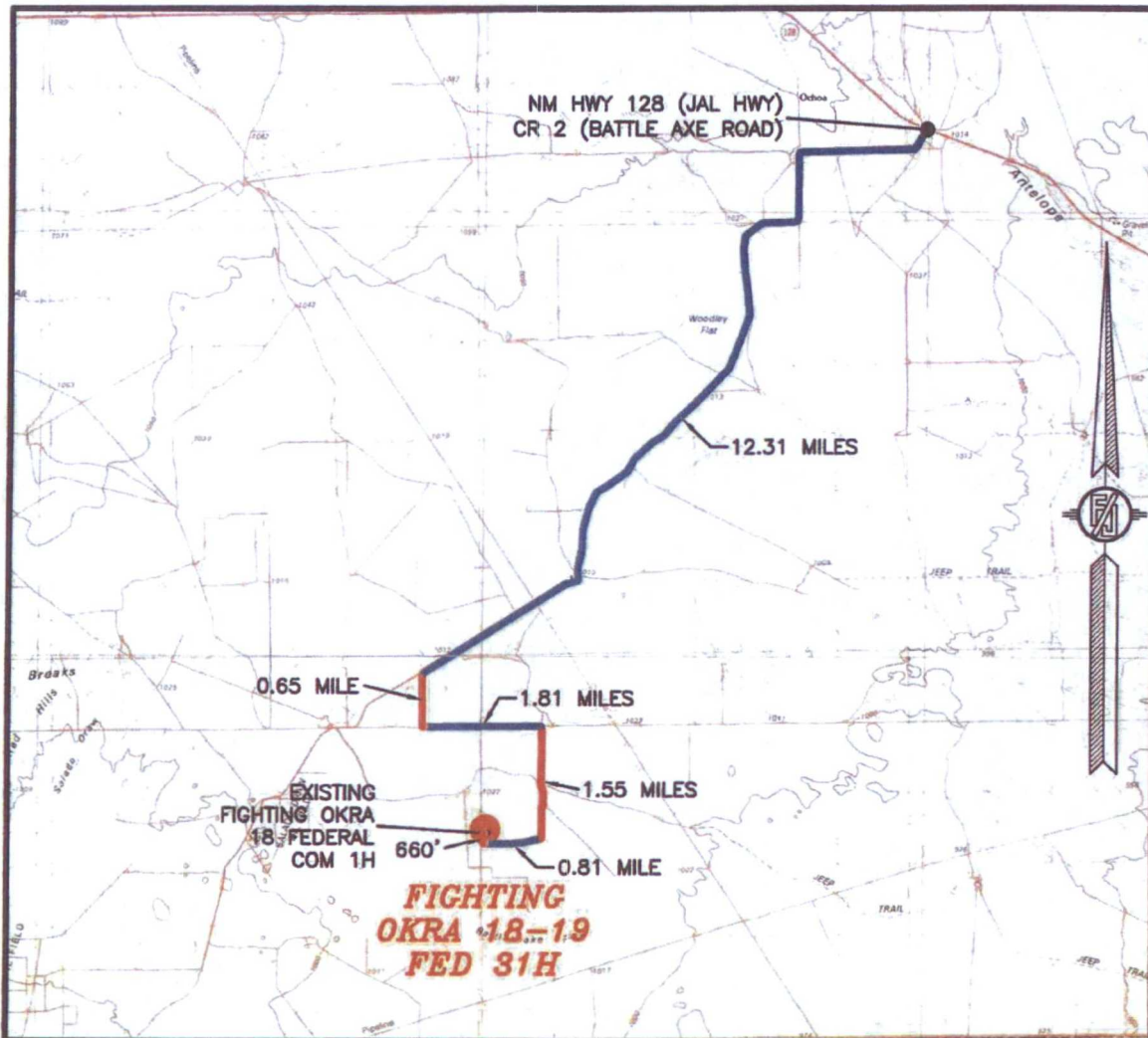
DEVON ENERGY PRODUCTION COMPANY, L.P.
FIGHTING OKRA 18-19 FED 31H
LOCATED 2310 FT. FROM THE NORTH LINE
AND 330 FT. FROM THE WEST LINE OF
SECTION 18, TOWNSHIP 26 SOUTH,
RANGE 34 EAST, N.M.P.M.
LEA COUNTY, STATE OF NEW MEXICO

JULY 21, 2015

SURVEY NO. 3789A

MADRON SURVEYING, INC. 301 SOUTH CANAL (575) 234-3341 CARLSBAD, NEW MEXICO

SECTION 18, TOWNSHIP 26 SOUTH, RANGE 34 EAST, N.M.P.M.
LEA COUNTY, STATE OF NEW MEXICO
VICINITY MAP



DISTANCES IN MILES

NOT TO SCALE

DIRECTIONS TO LOCATION

FROM THE INTERSECTION OF NM HWY 128 (JAL HWY) AND CR 2 (BATTLE AXE ROAD) GO SOUTH ON BATTLE AXE ROAD 12.31 MILES, TURN LEFT ON A CALICHE LEASE ROAD GO SOUTH 0.65 MILE TO PIPELINE ROAD TURN LEFT GO EAST 1.81 MILES TURN RIGHT AT CALICHE LEASE ROAD GO SOUTH 1.55 MILES TO CALICHE LEASE ROAD ON RIGHT GO WEST 0.81 MILE TO A BEND IN THE ROAD TO THE NORTH GO NORTH ABOUT 860 FEET THROUGH EXISTING FIGHTING OKRA 18 FEDERAL COM 1H PAD TO PROPOSED SOUTHWEST CORNER OF PAD

DEVON ENERGY PRODUCTION COMPANY, L.P.

FIGHTING OKRA 18-19 FED 31H

LOCATED 2310 FT. FROM THE NORTH LINE

AND 330 FT. FROM THE WEST LINE OF

SECTION 18, TOWNSHIP 26 SOUTH,

RANGE 34 EAST, N.M.P.M.

LEA COUNTY, STATE OF NEW MEXICO

JULY 21, 2015

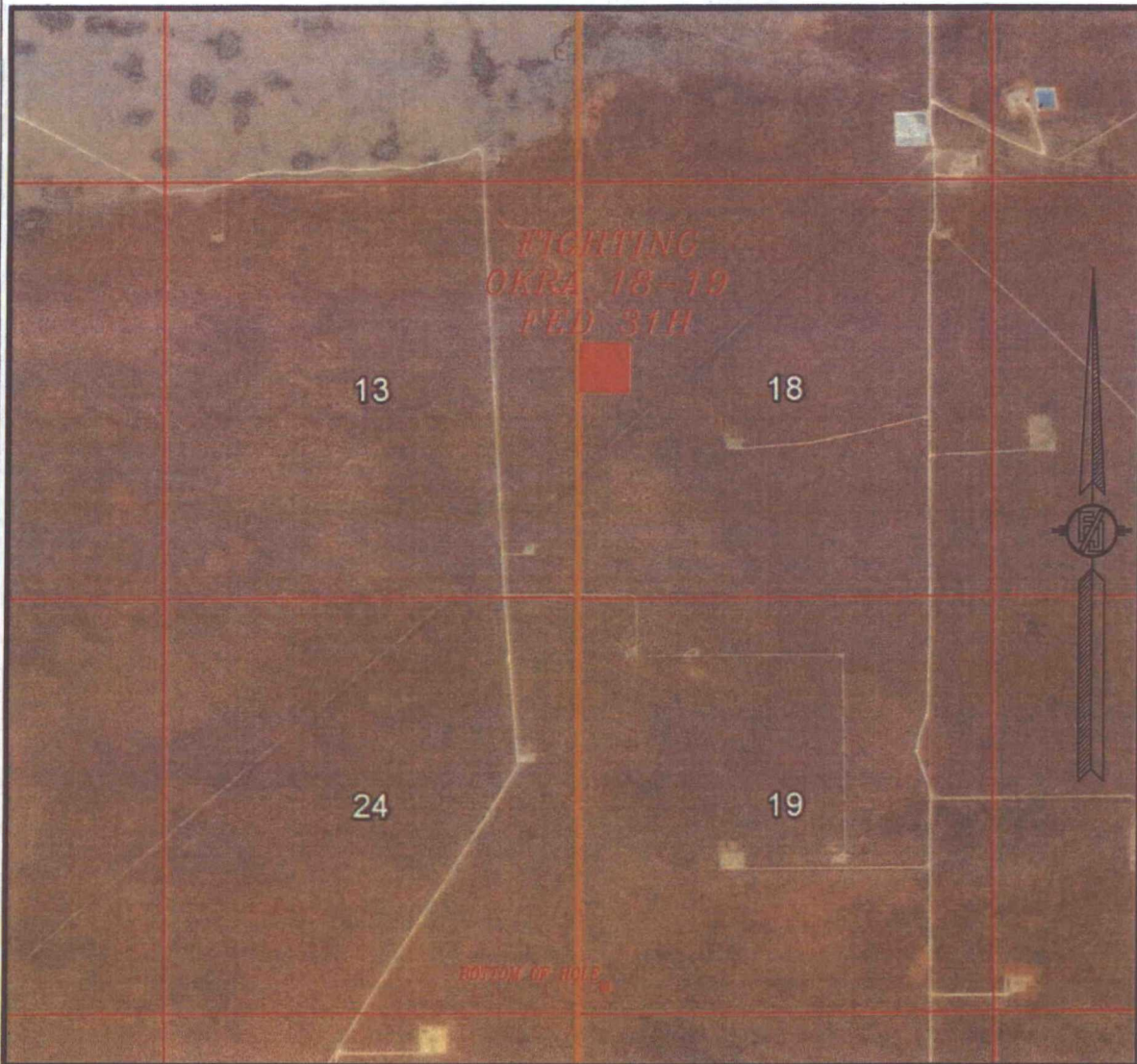
SURVEY NO. 3789A

MADRON SURVEYING, INC. 301 SOUTH CANAL

(575) 234-3341

CARLSBAD, NEW MEXICO

SECTION 18, TOWNSHIP 26 SOUTH, RANGE 34 EAST, N.M.P.M.
LEA COUNTY, STATE OF NEW MEXICO
AERIAL PHOTO



NOT TO SCALE
AERIAL PHOTO:
GOOGLE EARTH
APR. 2013

DEVON ENERGY PRODUCTION COMPANY, L.P.
FIGHTING OKRA 18-19 FED 31H
LOCATED 2310 FT. FROM THE NORTH LINE
AND 330 FT. FROM THE WEST LINE OF
SECTION 18, TOWNSHIP 26 SOUTH,
RANGE 34 EAST, N.M.P.M.
LEA COUNTY, STATE OF NEW MEXICO

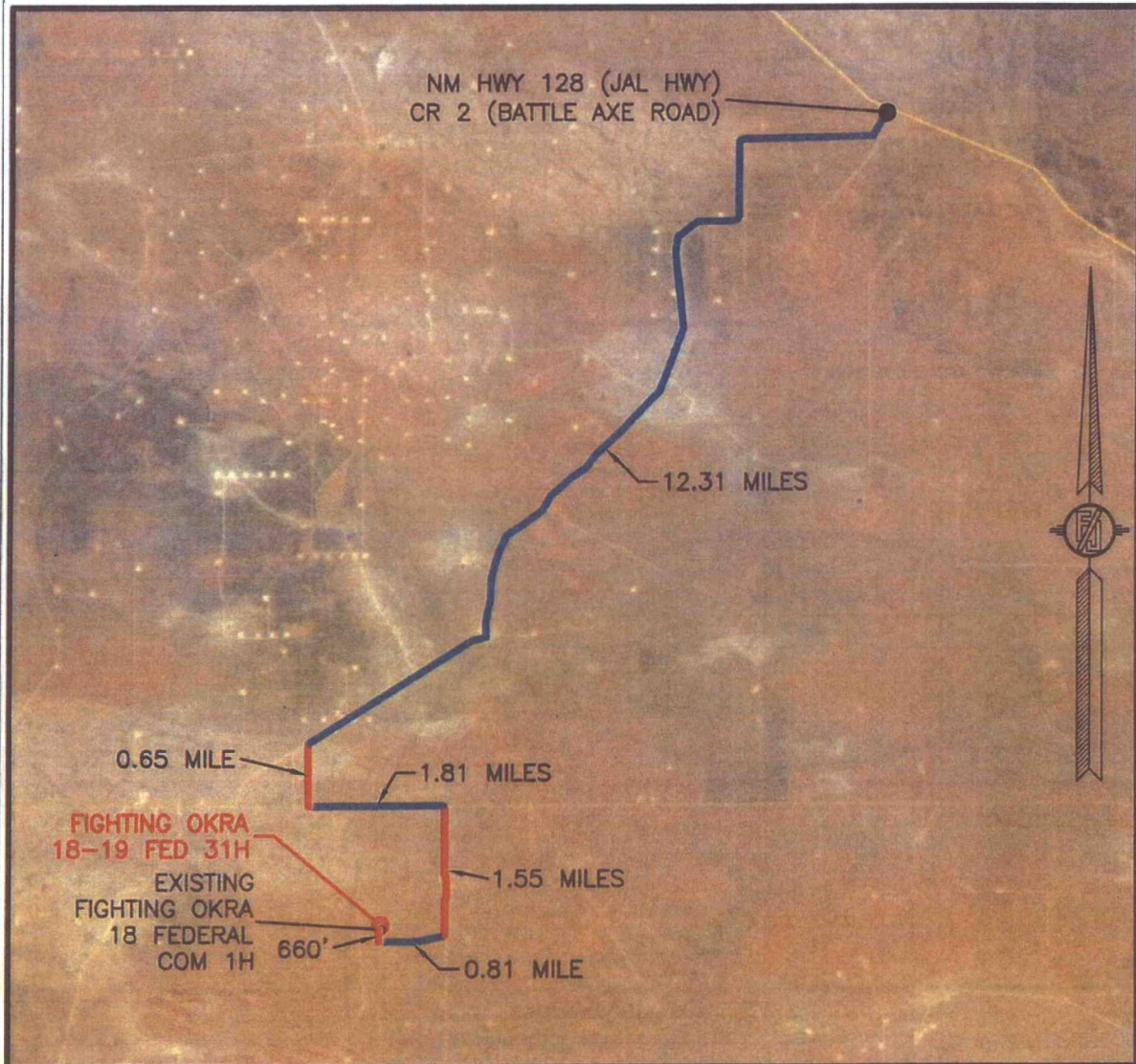
JULY 21, 2015

SURVEY NO. 3789A

MADRON SURVEYING, INC. 301 SOUTH CANAL (575) 234-3341 **CARLSBAD, NEW MEXICO**

301 SOUTH CANAL
(575) 234-3341

SECTION 18, TOWNSHIP 26 SOUTH, RANGE 34 EAST, N.M.P.M.
LEA COUNTY, STATE OF NEW MEXICO
AERIAL ACCESS ROUTE MAP



NOT TO SCALE
AERIAL PHOTO:
GOOGLE EARTH
APR. 2013

DEVON ENERGY PRODUCTION COMPANY, L.P.
FIGHTING OKRA 18-19 FED 31H
LOCATED 2310 FT. FROM THE NORTH LINE
AND 330 FT. FROM THE WEST LINE OF
SECTION 18, TOWNSHIP 26 SOUTH,
RANGE 34 EAST, N.M.P.M.
LEA COUNTY, STATE OF NEW MEXICO

JULY 21, 2015

SURVEY NO. 3789A

MADRON SURVEYING, INC. 301 SOUTH CANAL (575) 234-3341 CARLSBAD, NEW MEXICO

One Mile Radius Map

Estimated distances to nearest wellbores:

*From SHL: Fighting Okra 18 Fed Com 1H_ST	100 ft E
Fighting Okra 18 Fed Com 1H_ST	25 ft E
Bradley Federal 13 1	100 ft W
Bradley Federal 19 1	330 ft E
Phillips Federal 1	1010 ft W
From BHL: Endurance 36 State Com 1H	1020 ft SW

14
26S 34E

23

24

25

18

19

30

devon

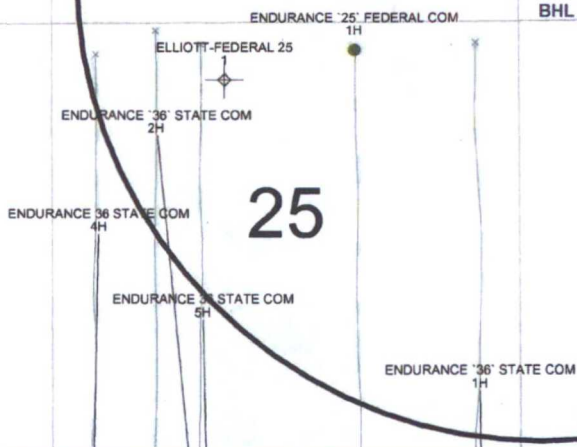
Fighting Okra 18-19 Fed 31H

1 Mile Radius Map

0 1,937
FEET

- WELL SYMBOLS
- ABANDONED OIL WELL
 - DRY AND ABANDONED WELL
 - DRY HOLE WITH SHOW OF O&G
 - JUNKED AND ABANDONED
 - OIL PRODUCING WELL
 - PROPOSED

May 1, 2015





Fighting Okra 18-19 Fed 31H Lea Co, NM

Plan Data for Fighting Okra 18-19 Fed 31H

Plan Point Information:									
Dogleg Severity Unit: °/100.00ft									
MD	Inc	Az	TVD	+N/-S	+E/-W	Northing	Easting	VSec	DLS
(USft)	(°)	(°)	(USft)	(USft)	(USft)	(USft)	(USft)	(USft)	(DLSU)
0.00	0.00	0.00	0.00	0.00	0.00	380827.97	794436.89	0.00	0.00
9851.65	0.00	0.00	9851.65	0.00	0.00	380827.97	794436.89	0.00	0.00
10033.47	20.00	171.00	10029.88	-31.03	4.91	380796.94	794441.80	31.06	11.00
10671.94	90.00	179.57	10374.00	-521.05	27.28	380306.92	794464.17	521.24	11.00
18075.58	90.00	179.57	10374.00	-7924.47	83.13	372903.50	794520.02	7924.87	0.00

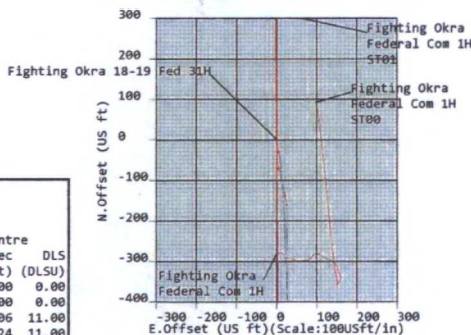
Plan Data for Fighting Okra 18-19 Fed 31H

Slot: Fighting Okra 18-19 Fed 31H
Position:
Offset is from Site centre
+N/-S: 0.00USft Northing: 380827.97USft Latitude: 32°2'39.6"
+E/-W: 0.00USft Easting: 794436.89USft Longitude: -103°30'59.3"
Elevation Above VRD: 3358.00USft

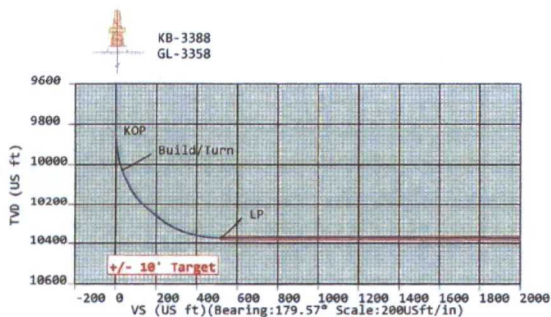
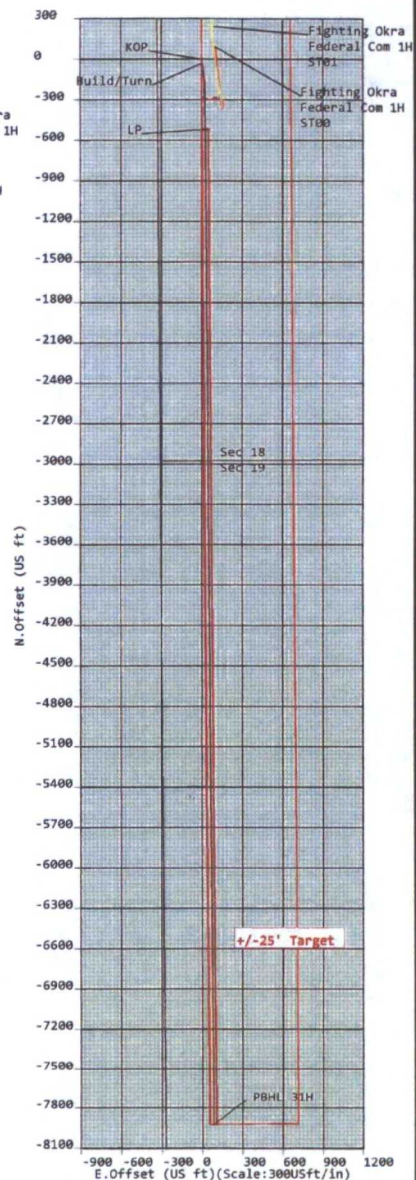
Plan Data for Fighting Okra 18-19 Fed 31H

Target Set Information:
Name: Fighting Okra 18-19 Fed 31H
Position offsets from Slot centre
Name TVD +N/-S +E/-W Northing Easting Shape Comment
(USft) (USft) (USft) (USft) (USft)
LP 10374.00 -521.05 27.28 380306.92 794464.17 Cuboid
PBHL 41H 10374.00 -7924.47 83.13 372903.50 794520.02 Cuboid

Fighting Okra 18-19 Fed 31H
Fighting Okra 18-19 Fed 21H
Fighting Okra Federal Com 1H ST01
Fighting Okra Federal Com 1H ST00



Weatherford



Plan Data for Fighting Okra 18-19 Fed 31H
Well: Fighting Okra 18-19 Fed 31H
Type: Main-Well
File Number:
Plan Folder: P1
Vertical Section: Position offset of origin from Slot centre:
+N/-S: 0.00USft +E/-W: 0.00USft
Magnetic Parameters:
Model: Field Strength: Declination: Dip: Date:
860° 48041(nT) 7.28° 59.91° 2815-10-15

