

DISTRICT I
1625 N. FRENCH DR., HOBBS, NM 88240
Phone: (575) 393-6181 Fax: (575) 393-8720

DISTRICT II
611 S. FIRST ST., ARTESIA, NM 88210
Phone: (575) 748-1283 Fax: (575) 748-0720

DISTRICT III
1000 RIO BRAZOS RD., AZTEC, NM 87410
Phone: (505) 334-6178 Fax: (505) 334-6170

DISTRICT IV
1220 S. ST. FRANCIS DR., SANTA FE, NM 87505
Phone: (505) 476-3460 Fax: (505) 476-3462

State of New Mexico
Energy, Minerals & Natural Resources Department
OIL CONSERVATION DIVISION
1220 SOUTH ST. FRANCIS DR.
Santa Fe, New Mexico 87505

MAY 06 2016

RECEIVED

Form C-102

Revised August 1, 2011

Submit a copy to appropriate
District Office☐ AMENDED REPORT

WELL LOCATION AND ACREAGE DEDICATION PLAT

API Number 30-025-42518	Pool Code 96674	Pool Name Triple X; Bone Spring, West
Property Code 313475	Property Name MACHO NACHO STATE COM	Well Number 9H
OGRID No. 217955	Operator Name COG PRODUCTION, LLC	Elevation 3571'

Surface Location

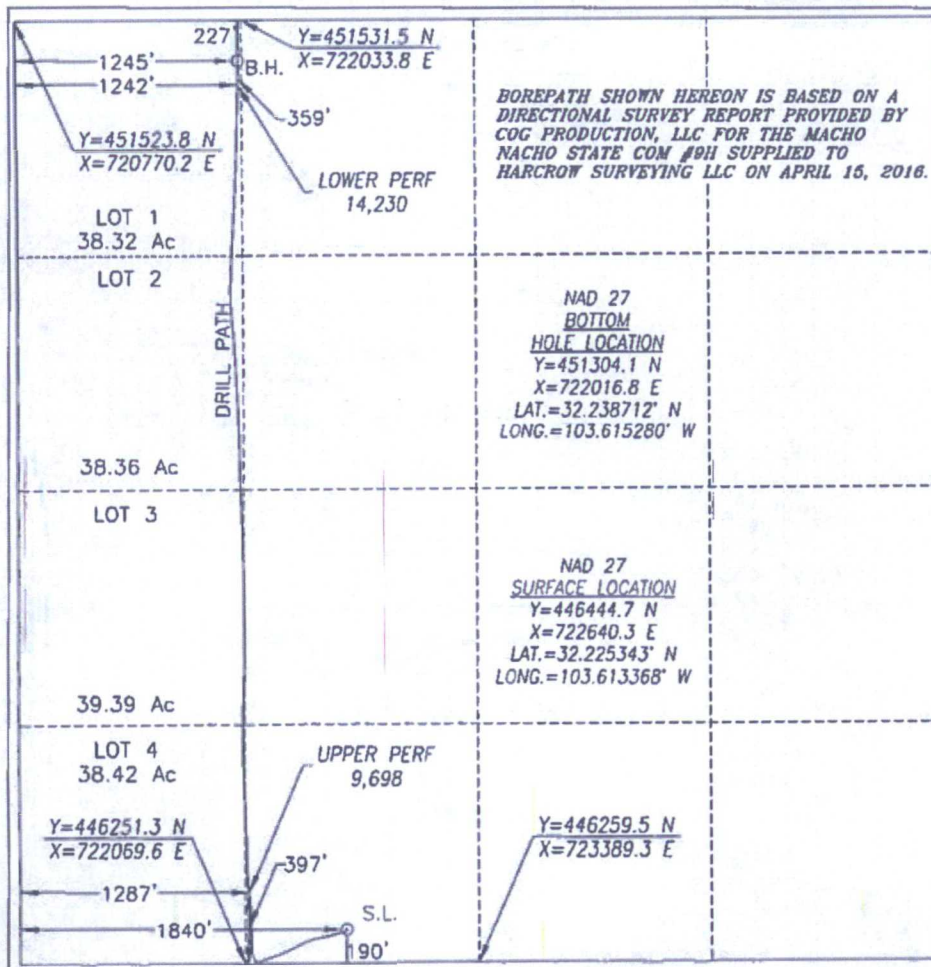
UL or lot No.	Section	Township	Range	Lot Idn	Feet from the	North/South line	Feet from the	East/West line	County
N	7	24-S	33-E		190	SOUTH	1840	WEST	LEA

Bottom Hole Location If Different From Surface

UL or lot No.	Section	Township	Range	Lot Idn	Feet from the	North/South line	Feet from the	East/West line	County
1	7	24-S	33-E		227	NORTH	1245	WEST	LEA

Dedicated Acres 153.40	Joint or Infill	Consolidation Code	Order No.
----------------------------------	-----------------	--------------------	-----------

NO ALLOWABLE WILL BE ASSIGNED TO THIS COMPLETION UNTIL ALL INTERESTS HAVE BEEN CONSOLIDATED
OR A NON-STANDARD UNIT HAS BEEN APPROVED BY THE DIVISION



OPERATOR CERTIFICATION

I hereby certify that the information herein is true and complete to the best of my knowledge and belief, and that this organization either owns a working interest or unleased mineral interest in the land including the proposed bottom hole location or has a right to drill this well at this location pursuant to a contract with an owner of such mineral or working interest, or to a voluntary pooling agreement or a compulsory pooling order heretofore entered by the division.

Stormi Davis 4/26/16
Signature Date

Stormi Davis

Printed Name

sdavis@concho.com

E-mail Address

SURVEYOR CERTIFICATION

I hereby certify that the well location shown on this plat was plotted from field notes of actual surveys made by me or under my supervision, and that the same is true and correct to the best of my belief.

FEB. 11, 2015/NOV. 2, 2015

Date of Survey/Date of Geographic Survey

Signature & Seal of Professional Surveyor



Chad L. Harcrow 4/25/16
Certificate No. CHAD HARCROW 17777
W.O. # 16-273 DRAWN BY: AM