

Submit 1 Copy To Appropriate District  
Office  
District I  
1625 N. French Dr., Hobbs, NM 88240  
District II  
1301 W. Grand Ave., Artesia, NM 88210  
District III  
1000 Rio Brazos Rd., Aztec, NM 87410  
District IV  
1220 S. St. Francis Dr., Santa Fe, NM  
87505

State of New Mexico  
Energy, Minerals and Natural Resources

Form C-103  
October 13, 2009

OIL CONSERVATION DIVISION  
1220 South St. Francis Dr.  
Santa Fe, NM 87505

WELL API NO.  
30-025-33578

5. Indicate Type of Lease  
STATE ☒ FEE ☐

6. State Oil & Gas Lease No.

7. Lease Name or Unit Agreement Name

McGrail State

8. Well Number 8

9. OGRID Number 873

10. Pool name or Wildcat  
Monument Abo

SUNDRY NOTICES AND REPORTS ON WELLS

(DO NOT USE THIS FORM FOR PROPOSALS TO DRILL OR TO DEEPEN OR PLUG BACK TO A  
DIFFERENT RESERVOIR. USE "APPLICATION FOR PERMIT" (FORM C-101) FOR SUCH  
PROPOSALS.)

1. Type of Well: Oil Well ☒ Gas Well ☐

2. Name of Operator

Apache Corp.

3. Address of Operator

P O box Drawer D Monument NM 88265

4. Well Location

Unit Letter A : 990 feet from the N line and 380 feet from the

E line

Section 27

Township 19S

Range 36E

NMPM

Lea

County

11. Elevation (Show whether DR, RKB, RT, GR, etc.)

12. Check Appropriate Box to Indicate Nature of Notice, Report or Other Data

E-PERMITTING <SWD INJECTION>

CONVERSION MB RBDMS MB ☐

RETURN TO TA fm ☐

CSNG ENVIRO CHG LOC ☐

INT TO PA P&A NR P&A R ☐

OTHER: ☐

SUBSEQUENT REPORT OF:

REMEDIAL WORK ☐ ALTERING CASING ☐

COMMENCE DRILLING OPNS. ☐ P AND A ☐

CASING/CEMENT JOB ☐

OTHER: TA wellbore ☒

13. Describe proposed or completed operations. (Clearly state all pertinent details, and give pertinent dates, including estimated date of starting any proposed work). SEE RULE 19.15.7.14 NMAC. For Multiple Completions: Attach wellbore diagram of proposed completion or recompletion.

Perfs 7030-7223

Move in & POOH with production equipment, RIH with CIBP & set @ 6970' and dump bail 35' of cement on top.  
Circulated the casing with packer fluid, pressure tested to 540 psi for 30 minutes, & charted the results. No change in pressure during the test. Apache Corporation requests a TA status for this well.

This Approval of Temporary  
Abandonment Expires 5/19/2021 ✓

Spud Date:

Rig Release Date:

I hereby certify that the information above is true and complete to the best of my knowledge and belief.

SIGNATURE Jim Ellison TITLE Instrument Tech DATE 5/19/16

Type or print name Jim Ellison E-mail address: JD.Ellison@apacheccorp.com PHONE: 575-441-7734

For State Use Only

APPROVED BY: Mary G Brown TITLE Dist Supervisor DATE 5/20/2016

Conditions of Approval (if any):



PRINTED IN U.S.A.



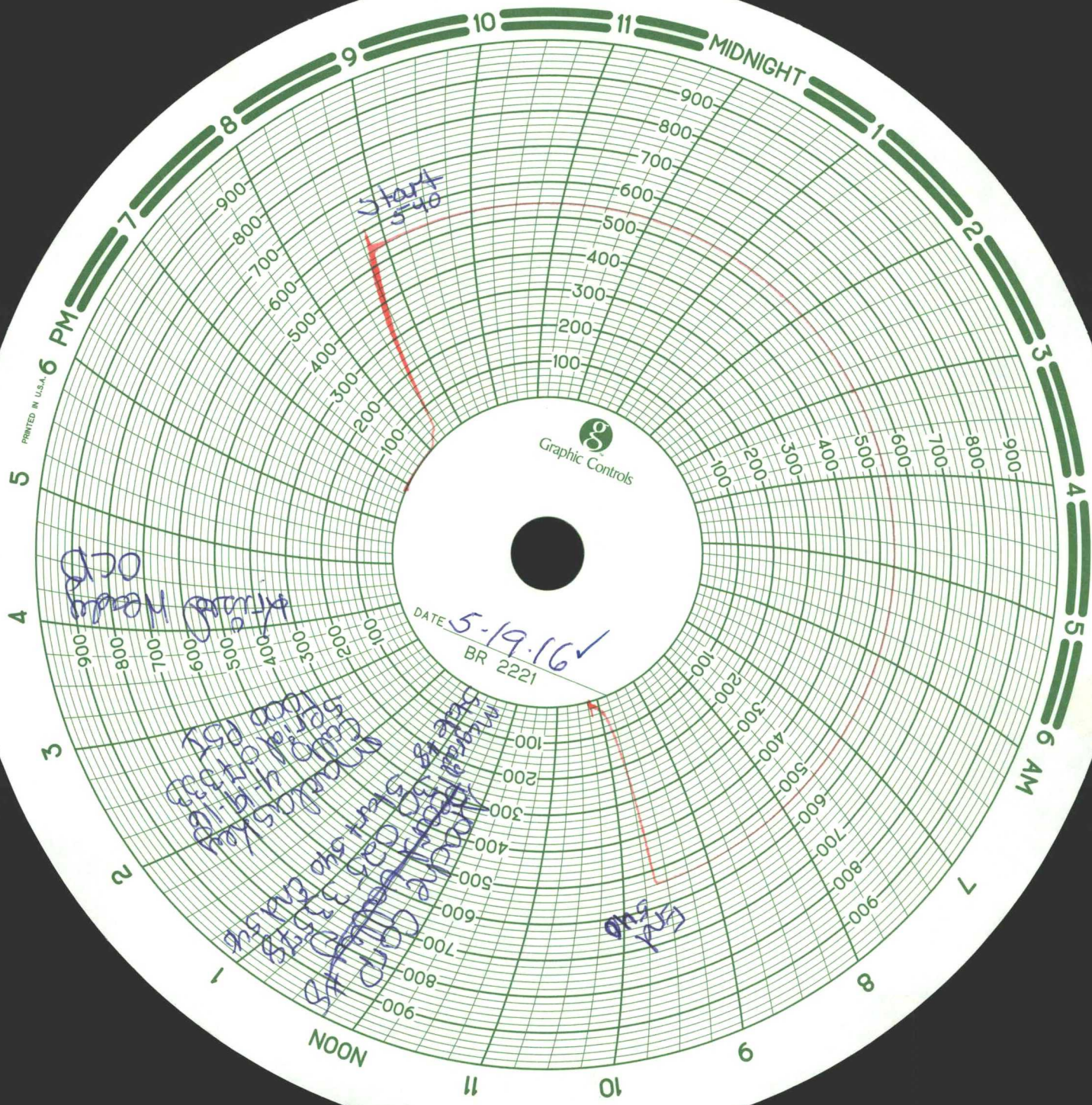
DATE 5-19-16 ✓  
BR 2221

Start  
5:40

End  
5:55

Handwritten notes in blue ink, including "Handwritten notes" and "Handwritten notes".

Handwritten notes in blue ink, including "Handwritten notes" and "Handwritten notes".





GL=3709'  
KB=3725'  
Spud:9/18/96

## Apache Corporation – McGrail State #8

### Wellbore Diagram – Current

Date : 5/19/2015

API: 30-025-33578

#### Surface Location

K. Grisham



990' FNL & 380' FEL,  
Unit N Sec 27, T19S, R36E, Lea County, NM

#### Surface Casing

13-3/8" 48# @ 510' w/ 386 sxs to surface

#### Intermediate Casing

8-5/8" 32# @ 2892' w/ 594 sxs

#### ESP in well (last report)

2 - 132 HP/ 1370 V / 64 AMP, motors, Seal Assembly, Gas Separator, 3 Pumps Type P-30 - w/ total of 279 stages, 1 - 6' x 2 7/8" pup and 220 joints of 2-7/8" tubing, cable, and 2 new (3/8") CT strings, One CT String landed at the Pump Intake @ 7000'. (220 Jts from Surface) and the Second CT String Landed @ 6429' (199 Jts from Surface) which is 582' above Pump intake. Bottom of motor set at 7058'. Pump intake at 7000'.

5/16: POOH w/ prod equip. Set CIBP @ 6970' w/ 35' cmt on top. Status changed to TA.

12/04: Perf fr/ 7030-7040. Acidize w/ 500 gals 15% HCl acid.

5/02: Install CIBP @ 7314'. Perf Abo fr/ 7103-17'; 7124-47'; 7162-70'; 7178-98' & 7211-23' w/ 6 spf. Set CIBP @ 7240'.

5/03: Acidize perfs 7103-7292' w/ 16,000 gals 17% CCA sour acid.

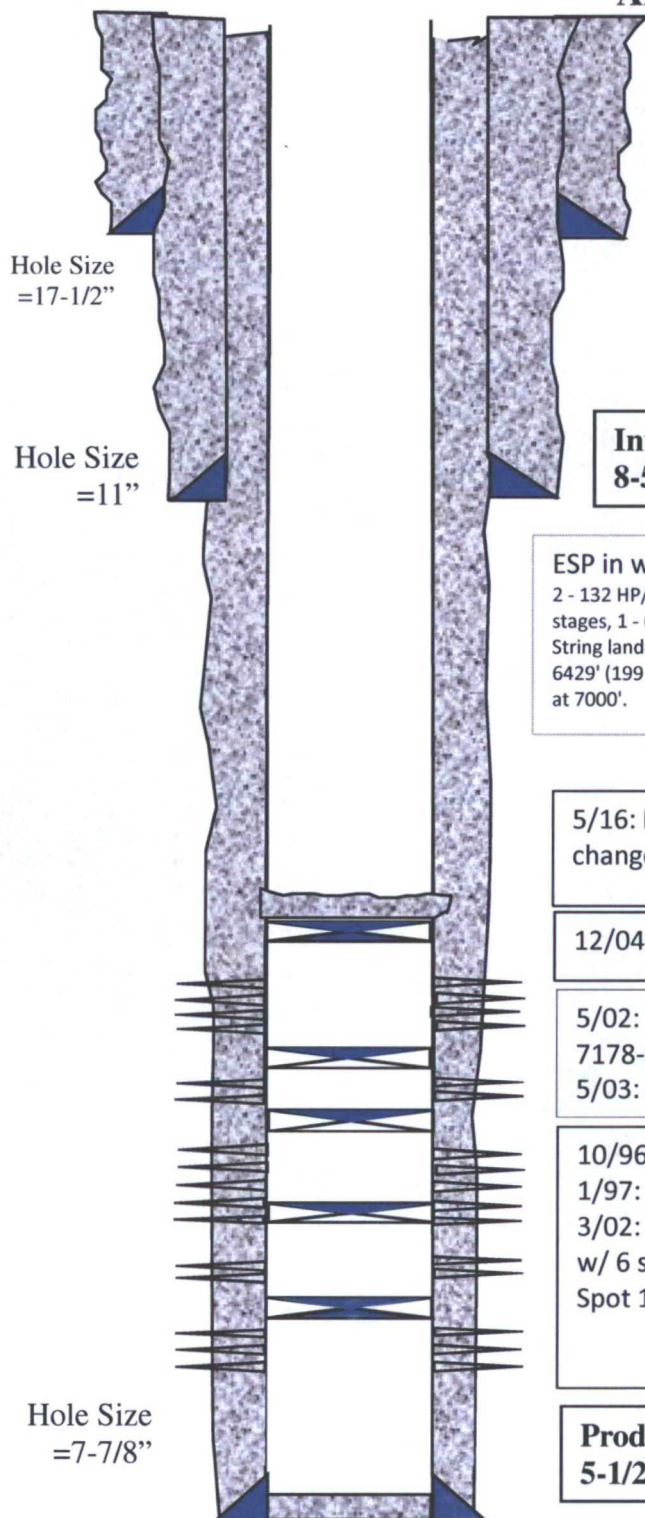
10/96: Perf fr/ 7402-7498' w/ 2 spf (142 holes).

1/97: Acidize w/ 2600 Ferchek acid w/ 500 scf/bbl Nitrogen.

3/02: Set CIBP @ 7419'. Perf fr/ 7382-92'; 7364-74'; 7340-50' & 7328-34' w/ 6 spf. Set CIBP 7398'. Swab w/ trace of oil in returns. Set CIBP @ 7320'. Spot 15% acid across perfs. Perf fr/ 7246-61' & 7274-92' w/ 6 spf. RTP.

#### Production Casing

5-1/2" 17# K-55 @ 8200' w/ 1389 sxs



PBTD = 7,323'  
MD = 8,200'