

Office

Energy, Minerals and Natural Resources

Revised August 1, 2011

District I - (575) 393-6161

1625 N. French Dr., Hobbs, NM 88240

District II - (575) 748-1283

811 S. First St., Artesia, NM 88210

District III - (505) 334-6178

1000 Rio Brazos Rd., Aztec, NM 87410

District IV - (505) 476-3460

1220 S. St. Francis Dr., Santa Fe, NM

87505

**HOBBS OCD**  
**MAY 23 2016**  
**RECEIVED**

## OIL CONSERVATION DIVISION

1220 South St. Francis Dr.

Santa Fe, NM 87505

WELL API NO.  
30-025-35962

5. Indicate Type of Lease

STATE ☒ FEE ☐6. State Oil & Gas Lease No.  
LG-2850

7. Lease Name or Unit Agreement Name

Mobil Lea State

8. Well Number 8

9. OGRID Number 001092

10. Pool name or Wildcat  
Northeast Lea Delaware

## SUNDRY NOTICES AND REPORTS ON WELLS

(DO NOT USE THIS FORM FOR PROPOSALS TO DRILL OR TO DEEPEN OR PLUG BACK TO A DIFFERENT RESERVOIR. USE "APPLICATION FOR PERMIT" (FORM C-101) FOR SUCH PROPOSALS.)

1. Type of Well: Oil Well ☐ Gas Well ☒ Other ☐ Water Injection Well

2. Name of Operator Armstrong Energy Corporation

3. Address of Operator PO Box 1973 Roswell, NM 88202

4. Well Location

Unit Letter N : 330 feet from the South line and 1650 feet from the West lineSection 2 Township 19S Range 34E NMPM Lea County

11. Elevation (Show whether DR, RKB, RT, GR, etc.)

## 12. Check Appropriate Box to Indicate Nature of Notice, Report or Other Data

## NOTICE OF INTENTION TO:

PERFORM REMEDIAL WORK ☐ PLUG AND ABANDON ☐  
 TEMPORARILY ABANDON ☐ CHANGE PLANS ☐  
 PULL OR ALTER CASING ☐ MULTIPLE COMPL ☐  
 DOWNHOLE COMMINGLE ☐

## SUBSEQUENT REPORT OF:

REMEDIAL WORK ☐ ALTERING CASING ☐  
 COMMENCE DRILLING OPNS. ☐ P AND A ☐  
 CASING/CEMENT JOB ☐

OTHER: ☐OTHER: Casing Leak Repair ☒

13. Describe proposed or completed operations. (Clearly state all pertinent details, and give pertinent dates, including estimated date of starting any proposed work). SEE RULE 19.15.7.14 NMAC. For Multiple Completions: Attach wellbore diagram of proposed completion or recompletion.

- 5/2/16 RU PU, ND tree, unset packer, NUBOP, TOH w/2 3/8" tbg. TIH set 10K CIBP @ 5925'. TOOHSI BOP, RU pump truck, Establish injection rate. Prep for cement squeeze tomorrow.
- 5/3/16 PU retainer and TIH w/work string. RU Halliburton break circ and clear pipe, set retainer @ 5766', test tbg to 4k#, pressure up Backside to 500#, establish injection rate @ 2.5bpm @ 1400#, mix and pump 50sx lead "C" w/.4% Halad322 tail w/ 50 sx "C" w/1% CaCl. Start staging @ 15.6bbl cement in zone. 4 stages w/5 min SD's, 3 stages w/10 min SD's. 1930psi ending, sting out of retainer and reverse 2sx to pit, RD Halliburton, TOOHSI w/tbg, retainer setting tool, SDSI, WOC.
- 5/4/16 SD WOC
- 5/5/16 RU Lucky RU, PU and TIH w/4 3/4" mill tooth, tag @ 5763' break circ and drl 3' cement on top of retainer. Retainer @ 5766'. Drill thru retainer and on cement to 5905', soft to medium hard circ clean, SI @ 5905' and pressure test to 1500# losing 100# every 2 min, isolate pump and press to 1450#, lost 150 psi in 10 min, bled to 600# lost 40# in 30min. SD. Squeeze did not take.
- 5/6/16 14 hr SI drop from 555# to 130#, Continue drill remaining cement to CIBP @ 5925', circ clean, pressure up to 1500# w/pump isolated, lost 175# in 10 min. RD swivel, TOOHSI w/tbg, collars & bit. SISD.
- 5/9/16 TIH w/packer and begin testing casing. Determine hole (probably a split) is still present from approximately 5873' to 5886', and that CIBP is holding. Establish injection rate, TOOHSI & prep for secondary squeeze, SISD.
- 5/10/16 PU retainer and TIH. RU Halliburton, break circ and clear pipe, set retainer @ 5772', test tbg and pressure backside to 500 psi. Est injection rate 2bpm @ 1500psi, pump 20bbl FW w/biocide (possible bacteria is cause for first squeeze not setting up well), flush w/30bbl FW, pump 100sx lead "C" w/0.4% Halad-322 tail in w/100sx "C" w/1% CaCl, begin staging with 38bbl cement into formation. Two 5 min SD's and seven 10 min SD's last stage held @ 2210#. Sting out of retainer and rev 40bbl FW, reversed out 2 bbl tail cement (~10sx). RD Halliburton, TOH w/tbg and retainer setting tool. SISD. WOC.
- 5/11/16 TIH w/4 3/4" bit, BS and DC's, PU swivel and break circ begin drlg retainer. Drl hard cement to 5889', circ and test sqz to 600# held good. Bleed off pressure and SISD.
- 5/12/16 Resume drlg cement @ 5889', drill to CIBP @ 5925', circ clean and test to 620# for 10 min, no bleed off, resume drilling CIBP and chase to bottom @ 6068'. Circ 30 min, TOH and LD work string (Left one cone off bit in the hole) SISD.

5/13/16 RU tbg testers and PU packer and test coated tbg going in the hole. RD tbg testers, ND BOP, NU flange, RU pump truck on casing and circ casing with CI. PU and set top of packer @ 5901.6 w/15 pts. Flange up and test backside, 530# to 500# in 35 min. Left well on injection @ 200 BWPD.  
5/14/16 CP @ 540#, appears to have packer leak. SI well.  
5/15/16 SI  
5/16/16 ND flange release packer attempt set @ 5885', pressure up and test, bled off. TOO H w/tbg and send packer to be shopped. SD.  
5/17/16 RIH w/ 2 3/8" Arrowset, ND BOP, NU flange, RU pump truck on csg and pump 100bbl packer fluid, set packer @ 5935', 5931', would not hold, possible corroded casing and can't get a good seat. TOO H and move last stand below packer to act as tailpipe, TIH and set packer at 5845' w/15 pts. Flange up WH pressure backside to 600# for 35 min, no bleed off (chart attached). RD pump truck, SISD.  
5/18/16 Resume injection

Spud Date:

Rig Release Date:

I hereby certify that the information above is true and complete to the best of my knowledge and belief.

SIGNATURE  TITLE Operations Manager DATE 5/19/16

Type or print name Kyle Alpers E-mail address: kalpers@aecn.com PHONE: 575-625-2222

**For State Use Only**

APPROVED BY:  TITLE Dist Supervisor DATE 5/31/2016

Conditions of Approval (if any):



HOBBS OCD

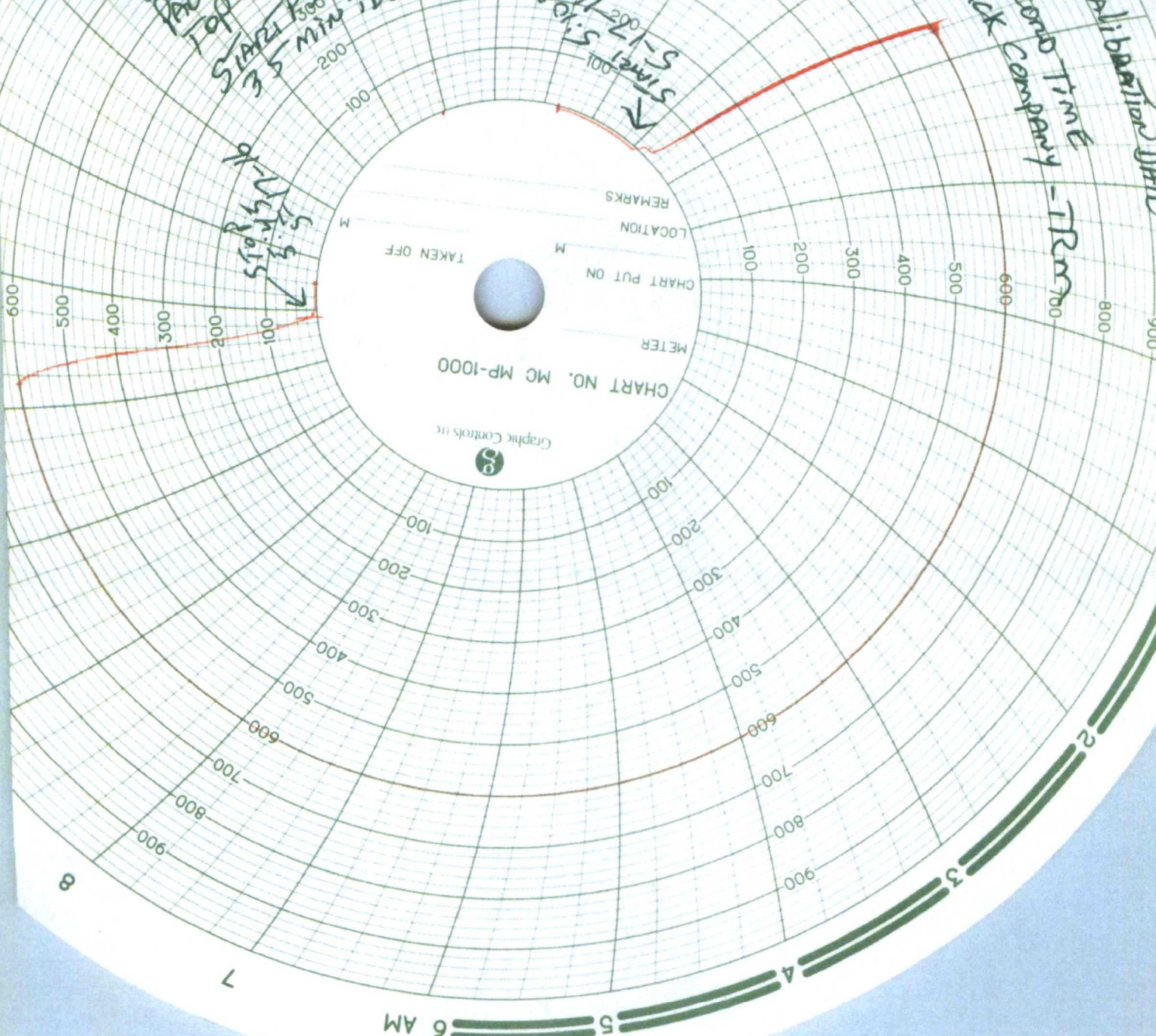
MAY 23 2016

RECEIVED

Armstrong Energy Corp 5-17-16  
Post Workover  
Mobil LEA STATE #8 API 30-025-35962  
SEC-2 T-205 R-34E Unit LTR-E  
330 PSI 1650 FWH  
PACKER SET @ 5844  
Top Pump 5942  
START PSI 600 Ending PSI 600  
3.5 min TEST TIME

224-lb MEIER Calibration DATE  
1000 # Range  
60 min Record Time  
Pump Truck Company

STOP  
5.5  
5.5







500 North Main Street, Suite 200  
P.O. Box 1973  
Roswell, New Mexico 88202-1973  
(575) 625-2222  
Fax (575) 622-2512

May 19, 2016

**HOBBS OCD**

**MAY 23 2016**

**RECEIVED**

Mr. Paul Kautz  
Oil Conservation Division  
1625 N. French Drive  
Hobbs, New Mexico 88240

Re: LG-2850  
Mobil Lea State #8  
Township 20 South, Range 34 East, NMPM  
Section 2  
Lea County, New Mexico

Dear Mr. Kautz:

Enclosed is a Sundry Notices and Reports on Wells for the Mobil Lea State #8, Subsequent Report, Casing Leak Repair, to be filed with your office. We have also enclosed a copy of the Chart.

If you have any questions, please contact Kyle Alpers at 505-625-2222.

Sincerely,

ARMSTRONG ENERGY CORPORATION

By: Irma Cunningham  
Irma Cunningham, Geo Tech

Enclosures