

DISTRICT I
1625 N. French Dr., Hobbs, NM 88240

DISTRICT II
811 South First, Artesia, NM 88210

DISTRICT III
1000 Rio Brazos Rd., Artesia, NM 87410

DISTRICT IV
2040 South Pacheco, Santa Fe, NM 87505

State of New Mexico
Energy, Minerals and Natural Resources Department

Form C-102
Revised August 1, 2011
Submit one copy to Appropriate
District Office

OIL CONSERVATION DIVISION
1220 South St. Francis Dr.
Santa Fe, New Mexico 87505

RECEIVED

☐ AMENDED REPORT

WELL LOCATION AND ACREAGE DEDICATION PLAT

API Number 30-025	Pool Code 96603	Pool Name Triste Draw: Bone Spring
Property Code 40257	Property Name COX FEDERAL 35	Well Number 4H
GRID No. 162928	Operator Name EMERGEN RESOURCES CORPORATION	Elevation 3630.6

Surface Location

UL or lot No.	Section	Township	Range	Lot Idn	Feet from the	North/South line	Feet from the	East/West line	County
0	35	23-S	32-E		200	South	2290	East	LEA

Bottom Hole Location If Different From Surface

UL or lot No.	Section	Township	Range	Lot Idn	Feet from the	North/South line	Feet from the	East/West line	County
B	35	23-S	32-E		330	North	2240	East	LEA

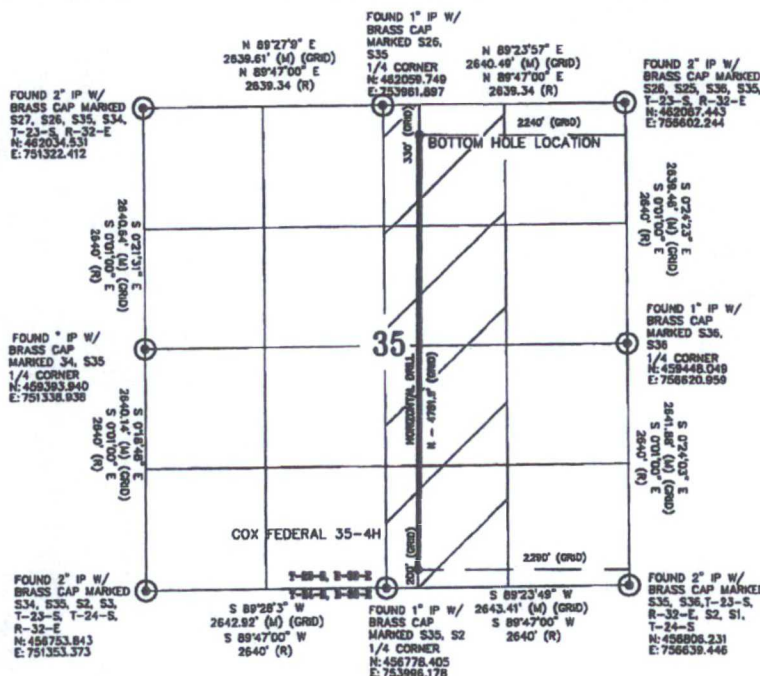
Dedicated Acres 160	Joint or Infill	Consolidation Code	Order No.
-------------------------------	-----------------	--------------------	-----------

NO ALLOWABLE WILL BE ASSIGNED TO THIS COMPLETION UNTIL ALL INTERESTS HAVE BEEN CONSOLIDATED
OR A NON-STANDARD UNIT HAS BEEN APPROVED BY THE DIVISION

COX FEDERAL 35-4H
N: 456982.1
E: 754348.1
LAT: 32°15'15.983"
LON: 103°38'39.384"
DATUM (NAD 1983)

SECTION 35
T-23-S, R-32-E

BOTTOM HOLE LOCATION
N: 461734.0
E: 754364.7
LAT: 32°16'03.004"
LON: 103°38'38.836"
DATUM (NAD 1983)



NOTES:
1. COORDINATES AND BEARINGS ARE BASED ON LAMBERT CONICAL PROJECTION OF THE STATE PLANE COORDINATE SYSTEM NAD 83, CORRS 96, TEXAS CENTRAL ZONE WITH A CONVERGENCE ANGLE OF 0.37067599 AND DISTANCES ARE OF GRID VALUE WITH A CENTRAL COMBINED SCALE FACTOR OF 0.99978903. THE POSITIONAL TOLERANCE OF THIS SURVEY EXCEEDS THE REQUIREMENTS FOR A CONSTRUCTION SURVEY.
2. SCALE 1" = 2000'

OPERATOR CERTIFICATION

I hereby certify that the information contained herein is true and complete to the best of my knowledge and belief, and that this organization either owns a working interest or unleased mineral interest in the land including the proposed bottom hole location or has a right to drill this well at this location pursuant to a contract with an owner of such a mineral or working interest, or to a voluntary pooling agreement or compulsory pooling order heretofore entered by the division.

12/23/14 3/25/14
Signature _____ Date _____
NATE BINGHAM
Printed Name _____
3/25/14
Date _____

SURVEYOR CERTIFICATION

I hereby certify that the well location shown on this plat was plotted from field notes of actual survey conducted under my supervision and that same are true and correct to the best of my knowledge.

3/14/14 3959
Date Surveyed _____
Signature & Seal of Professional Surveyor
WILSON D. WATSON, JR.

Certificate No. **WILSON D. WATSON JR.**
P.L.S. #3959
WATSON PROFESSIONAL GROUP INC

SKETCH PLAT

COX-FEDERAL 35-4H
LAT: 32°15'15.983"
LON: 103°38'39.384"

ENERGEN RESOURCES CORPORATION
COX-FEDERAL 35-4H
200 FSL & 2290 FEL
SECTION 35

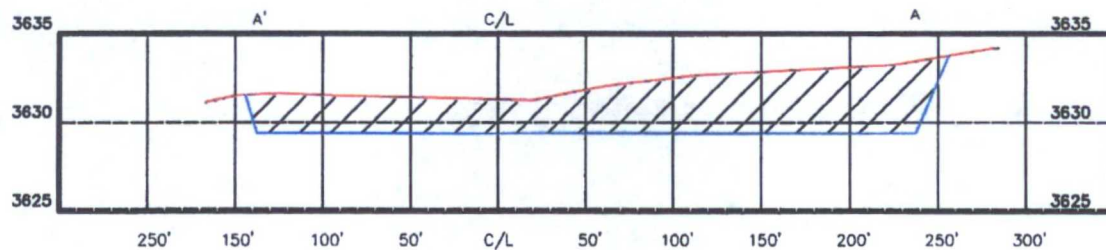
T-23-S, R-32-E
LEA COUNTY, NEW MEXICO
FINISHED PAD ELEVATION; (3629.37') 3630.58' ACTUAL
GROUND ELEVATION (3629.37') NAVD 88

LEGEND

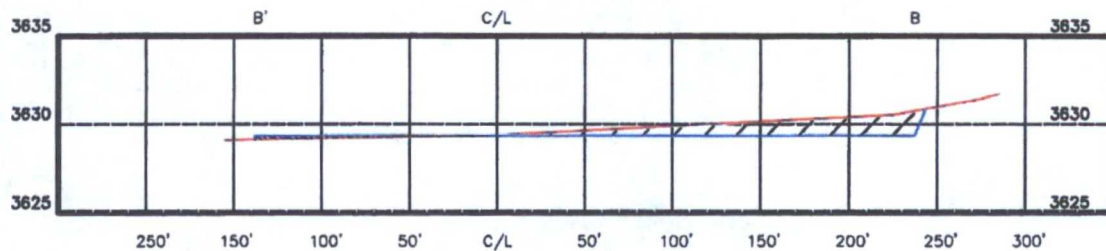


EXISTING GRADE
FINISHED GRADE

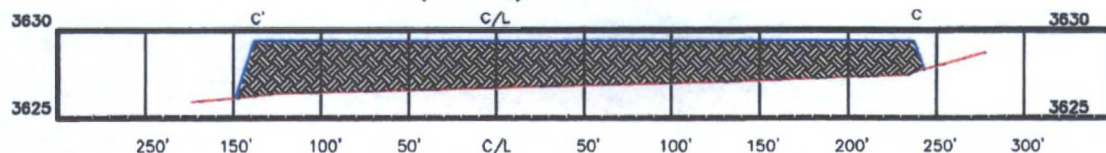
"A" (NORTH) PROFILE



"B" (CENTER) PROFILE



"C" (SOUTH) PROFILE



THIS DIAGRAM IS AN ESTIMATE
OF DIRT BALANCE AND IS NOT
INTENDED TO BE AN EXACT
MEASURE OF VOLUME

CONSTRUCTION ZONE
600' X 600' AREA
PROPOSED LEASE ROAD

TOTAL LENGTH OF NEW ROAD = 2832.75'

Basis of Bearing is SPC NAD 83 NEW MEXICO EAST

0 500' 1000'

WD/14-1071-00

FILE/T/PROJECTS/NEW MEXICO/LEA/T23S R32E.DWG

PRE-CONSTRUCTION AS SURVEYED IN 2013 REVISED DATE 3/14/14



CONSULTING ENGINEERS, LAND SURVEYORS & PLANNERS

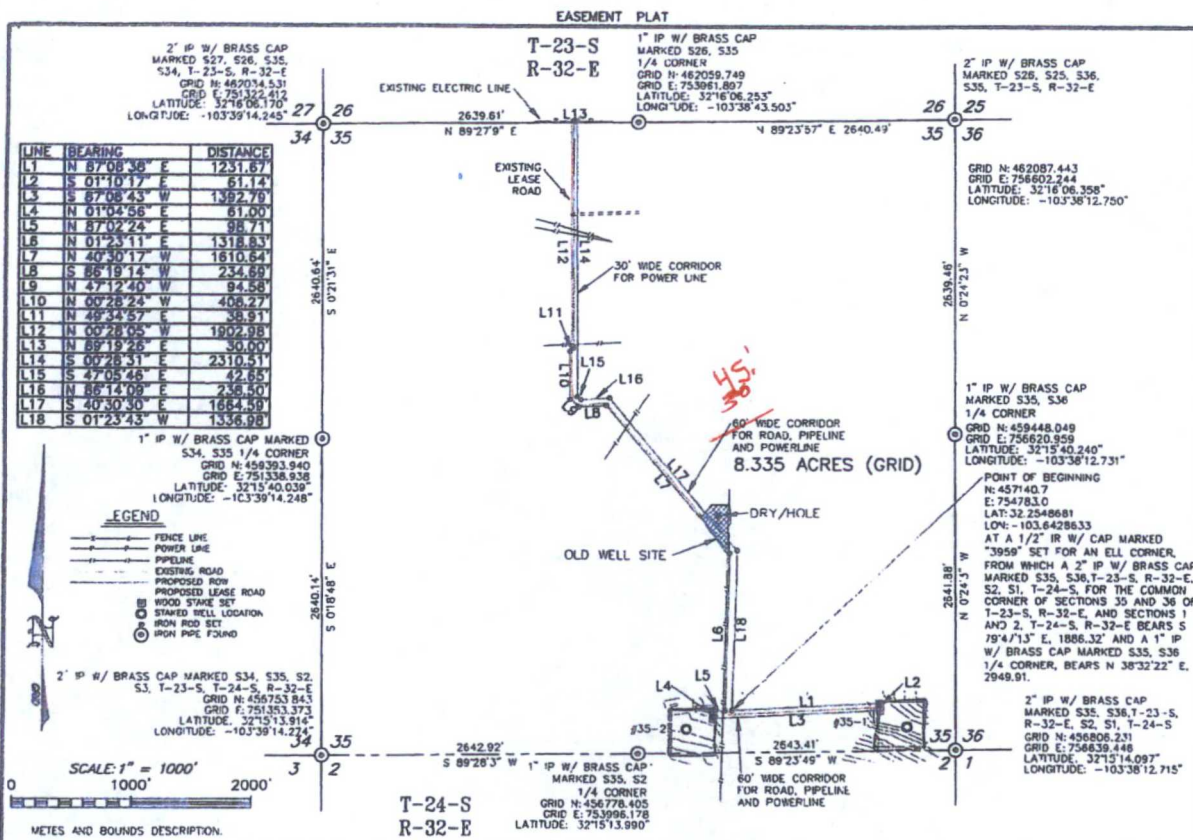
P.O. DRAWER 1086
MIDLAND, TEXAS 79702
TEL: 432/620-9000
FAX: 432/620-9000

LOCATION PAD PROFILES

ENERGEN RESOURCES CORPORATION

COX FEDERAL 35-2H & 35-4H

Location Pad Calculations
T-23-S, R-32-E
LEA COUNTY, NEW MEXICO.



METES AND BOUNDS DESCRIPTION.

BEING A 8.335 ACRE, MORE OR LESS, TRACT OF LAND LYING IN AND BEING PART OF SECTIONS 35 AND 26, T-23-S, R-32-E, LEA COUNTY, NEW MEXICO, AND BEING MORE PARTICULARLY DESCRIBED AS FOLLOWS:

BEGINNING, AT A 1/2 INCH IRON ROD SET WITH A CAP MARKED "3959" (N457140.7 E:754783.0) FOR AN ELL CORNER, FROM WHICH A FOUND 2 INCH IRON PIPE WITH A BRASS CAP MARKED "S35, S36, T-23-S, R-32-E, S2, S1, T-24-S, R-32-E, AND SECTIONS 1 AND 2, T-24-S, R-32-E BEARS S 79°47'13" E, A DISTANCE OF 1886.32 FEET, AND A FOUND 1 INCH IRON PIPE WITH BRASS CAP MARKED "S35, S36 1/4 CORNER", BEARS NORTH 38°32'22" EAST, A DISTANCE OF 2949.91 FEET;

THENCE NORTH 87°08'38" EAST, A DISTANCE OF 1231.67 FEET TO WOOD STAKE SET (N457202.1 E:756013.2), FROM WHICH A STAKE SET FOR THE ENERGEN #35-1 WELL LOCATION, BEARS SOUTH 48°21'16" EAST, A DISTANCE OF 301.02 FEET, FOR A SOUTHEAST CORNER HEREOF;

THENCE SOUTH 01°10'17" EAST, A DISTANCE OF 61.14 FEET TO A WOOD STAKE SET (N457140.9 E:756014.4), FROM WHICH A STAKE SET FOR THE SAID ENERGEN #35-1 WELL LOCATION, BEARS SOUTH 58°09'40" EAST, A DISTANCE OF 263.31 FEET, FOR A SOUTHEAST CORNER HEREOF;

THENCE SOUTH 87°08'43" WEST, A DISTANCE OF 1392.78 FEET TO A WOOD STAKE SET (N457071.6 E:754623.3), FROM WHICH A STAKE SET FOR THE ENERGEN #35-2 WELL LOCATION, BEARS SOUTH 66°26'45" WEST, A DISTANCE OF 242.02 FEET, FOR A SOUTHWEST CORNER HEREOF;

THENCE NORTH 01°04'56" EAST, A DISTANCE OF 61.00 FEET TO A WOOD STAKE SET (N457132.6 E:754624.5), FROM WHICH A STAKE SET FOR THE SAID ENERGEN #35-2 WELL LOCATION, BEARS SOUTH 56°19'18" WEST, A DISTANCE OF 270.42 FEET, FOR A SOUTHWEST CORNER HEREOF;

THENCE NORTH 87°02'24" EAST, A DISTANCE OF 98.71 FEET TO A 1/2 INCH IRON ROD SET WITH A CAP MARKED "3959" (N457137.7 E:754723.1), FROM WHICH A 1 INCH IRON PIPE WITH BRASS CAP MARKED "S35, S2 1/4 CORNER", BEARS SOUTH 63°47'16" WEST, A DISTANCE OF 808.91 FEET, FOR AN ELL CORNER HEREOF;

THENCE NORTH 01°23'11" EAST, A DISTANCE OF 1318.83 FEET TO A 1/2 INCH IRON ROD SET WITH A CAP MARKED "3959" (N456456.1 E:754755.0), FROM WHICH A 1 INCH IRON PIPE WITH BRASS CAP MARKED "S34, S35 1/4 CORNER", BEARS NORTH 74°38'53" WEST, A DISTANCE OF 3542.44 FEET, FOR A CORNER HEREOF;

THENCE NORTH 01°10'17" WEST, A DISTANCE OF 1610.64 FEET TO A 1/2 INCH IRON ROD SET WITH A CAP MARKED "3959" (N456860.7 E:753708.9), FROM WHICH THE SAID 1 INCH IRON PIPE WITH BRASS CAP MARKED "S34, S35 1/4 CORNER", BEARS SOUTH 83°05'59" WEST, A DISTANCE OF 2387.20 FEET, FOR A CORNER HEREOF;

THENCE SOUTH 85°19'14" WEST, A DISTANCE OF 234.69 FEET TO A 1/2 INCH IRON ROD SET WITH A CAP MARKED "3959" (N459665.7 E:753474.6), FROM WHICH THE SAID 1 INCH IRON PIPE WITH BRASS CAP MARKED "S34, S35 1/4 CORNER", BEARS SOUTH 82°44'55" WEST, A DISTANCE OF 2152.92 FEET, FOR A CORNER HEREOF;

THENCE NORTH 47°14'01" WEST, A DISTANCE OF 94.59 FEET TO A 1/2 INCH IRON ROD SET WITH A CAP MARKED "3959" (N459720.9 E:753405.2), FROM WHICH THE SAID 1 INCH IRON PIPE WITH BRASS CAP MARKED "S34, S35 1/4 CORNER", BEARS SOUTH 80°45'51" WEST, A DISTANCE OF 2093.43 FEET, FOR A CORNER HEREOF;

THENCE NORTH 00°28'24" WEST, A DISTANCE OF 408.27 FEET TO A 1/2 INCH IRON ROD SET WITH A CAP MARKED "3959" (N460139.2 E:753401.9), FROM WHICH THE SAID 1 INCH IRON PIPE WITH BRASS CAP MARKED "S34, S35 1/4 CORNER", BEARS SOUTH 70°09'42" WEST, A DISTANCE OF 2193.07 FEET, FOR A CORNER HEREOF;

THENCE NORTH 49°34'57" EAST, A DISTANCE OF 38.91 FEET TO A 1/2 INCH IRON ROD SET WITH A CAP MARKED "3959" (N460163.4 E:753431.5), FROM WHICH THE SAID 1 INCH IRON PIPE WITH BRASS CAP MARKED "S35, S36 1/4 CORNER", BEARS SOUTH 77°21'30" EAST, A DISTANCE OF 3268.72 FEET, FOR A SOUTHWEST CORNER HEREOF;

THENCE NORTH 00°28'05" WEST, AT A DISTANCE OF 1891.18 FEET, PASSING THE COMMON LINE OF THE SAID SECTIONS 35 AND 26, A TOTAL DISTANCE OF 1902.98 FEET TO A 1/2 INCH IRON ROD SET WITH A CAP MARKED "3959" (N462066.3 E:753415.9), FROM WHICH A 2 INCH IRON PIPE WITH A BRASS CAP MARKED "S27, S26, S35, S34, T-23-S, R-32-E, FOR THE COMMON CORNER OF SECTIONS 35, 34, 27 AND 26, T-23-S, R-32-E, BEARS SOUTH 89°07'46" WEST, A DISTANCE OF 2093.76 FEET, FOR A CORNER HEREOF;

THENCE NORTH 89°19'26" EAST, A DISTANCE OF 30.00 FEET TO A 1/2 INCH IRON ROD SET WITH A CAP MARKED "3959" (N462066.7 E:753445.9) FROM WHICH A 1 INCH IRON PIPE WITH BRASS CAP MARKED "S26, S35 1/4 CORNER", BEARS SOUTH 89°13'45" EAST, A DISTANCE OF 516.01 FEET, FOR A CORNER HEREOF;

THENCE SOUTH 00°28'31" EAST, A DISTANCE OF 11.87 FEET, PASSING THE COMMON LINE OF THE SAID SECTIONS 25 AND 35, A TOTAL DISTANCE OF 2310.51 FEET TO A 1/2 INCH IRON ROD SET WITH A CAP MARKED "3959" (N459756.3 E:753445.1), FROM WHICH THE SAID 1 INCH IRON PIPE WITH BRASS CAP MARKED "S35, S36 1/4 CORNER", BEARS SOUTH 84°25'19" EAST, A DISTANCE OF 3170.87 FEET, FOR A CORNER HEREOF;

THENCE SOUTH 47°05'46" EAST A DISTANCE OF 42.65 FEET TO A 1/2 INCH IRON ROD SET WITH A CAP MARKED "3959" (N459727.2 E:753436.3), FROM WHICH THE SAID 1 INCH IRON PIPE WITH BRASS CAP MARKED "S35, S36 1/4 CORNER", BEARS SOUTH 84°55'20" EAST, A DISTANCE OF 3737.21 FEET, FOR A CORNER HEREOF;

THENCE NORTH 86°14'09" EAST, A DISTANCE OF 238.50 FEET TO A 1/2 INCH IRON ROD SET WITH A CAP MARKED "3959" (N459742.9 E:753734.3), FROM WHICH THE SAID 1 INCH IRON PIPE WITH BRASS CAP MARKED "S35, S36 1/4 CORNER", BEARS SOUTH 84°10'06" EAST, A DISTANCE OF 2901.65 FEET, FOR A CORNER HEREOF;

THENCE SOUTH 40°30'30" EAST A DISTANCE OF 1684.59 FEET TO A 1/2 INCH IRON ROD SET WITH A CAP MARKED "3959" (N458477.3 E:754151.6), FROM WHICH THE SAID 1 INCH IRON PIPE WITH BRASS CAP MARKED "S35, S36 1/4 CORNER", BEARS NORTH 61°43'58" EAST A DISTANCE OF 2049.84 FEET FOR A CORNER HEREOF;

THENCE SOUTH 01°23'43" WEST, A DISTANCE OF 1336.98 FEET TO THE PLACE OF BEGINNING AND CONTAINING 8.335 ACRES, MORE OR LESS.

NOTES

- COORDINATES AND BEARINGS ARE BASED ON LAMBERT CONICAL PROJECTION OF THE STATE PLANE COORDINATE SYSTEM AND U.S. COAST AND GEODETIC SURVEY DATA. THE CORRESPONDING HORIZONTAL DISTANCES ARE OF GRID VALUE WITH A CENTRAL CORRECTION FACTOR OF 0.9997000000. THE POSITIONAL TOLERANCE OF THIS SURVEY EXCEEDS THE REQUIREMENTS FOR A EASEMENT SURVEY.
- THIS SURVEY WAS PERFORMED WITHOUT THE BENEFIT OF A TITLE REPORT AND REVIEW OF THE ABSTRACT OF TITLE. THERE MAY BE EASEMENTS AND/OR COVENANTS AFFECTING THIS PROPERTY NOT SHOWN HEREON. LOCATIONS OF EASEMENTS AND/OR COVENANTS ARE BEYOND COMMISSIONED SCOPE OF THIS PROJECT AND HAVE BEEN SPECIFICALLY OBTAINED BY SEPARATE DOCUMENTS FOR THIS SURVEY.
- SEE DOCUMENTS AND ELECTRONIC DATA FILED IN THE OFFICE OF THE PUBLIC LANDS FOR COMPLETE RECONSTRUCTION OF THESE SECTIONS OR BLOCKS.

FILED/PROJECT/NEW MEXICO/1235 RISE/000 100 13-1235-00 AND 13-1235-00

Watson Professional Group Inc.



P.O. DRAWER 1166
MILAN, TEXAS 79702
(512) 530-3222
FAX (512) 530-3222

CONSULTING ENGINEERS, LAND SURVEYORS & PLANNERS



Scale of Bearing = SPC NAD 83 NEW MEXICO EAST

PROPOSED CORRIDOR

ENERGEN RESOURCES

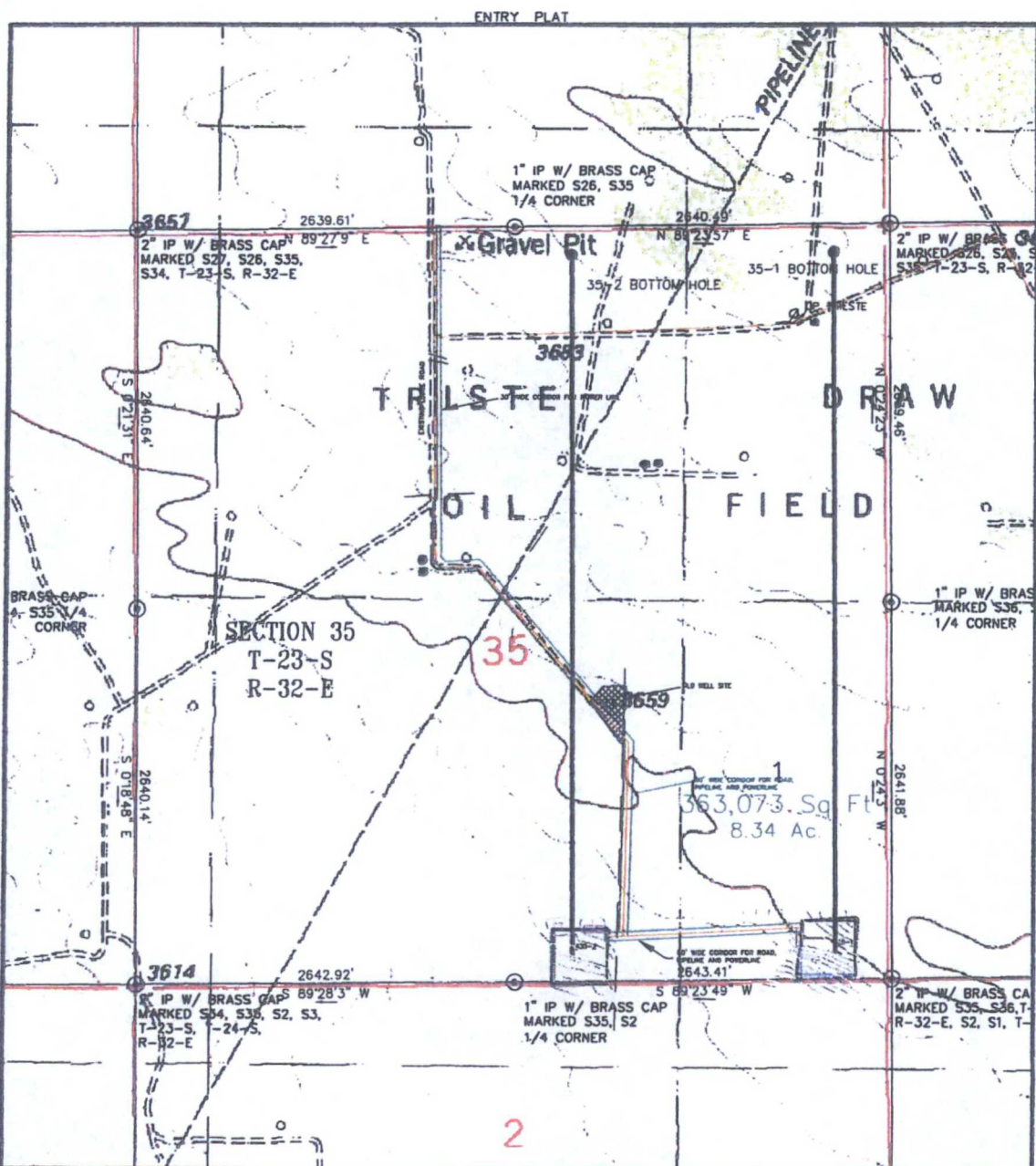
COX FEDERAL LEASE

A PROPOSED CORRIDOR IN SECTIONS 35 & 26
T-23-S, R-32-E
LEA COUNTY, NEW MEXICO.

I, THE UNDERSIGNED, DO HEREBY CERTIFY THAT THE FOREGOING DESCRIPTION AND PLAT HEREON IS A REPRESENTATION OF A SURVEY COMPLETED BY THE GROUP UNDER MY SUPERVISION AND MY TITLE AND CREDENTIALS ARE AS SHOWN ON MY PRESENTING CARD.

W.D. Watson, Jr.
W.D. Watson, Jr. NEW MEXICO P.L.S. 3959

5/20/2013
DATE



0 400' 800'

FILE/T/PROJECTS/NEW MEXICO/LEA/T23S R32E.DWG

Basis of Bearing is SPC NAD 83 NEW MEXICO EAST

TOPO OF SECTION 35

ENERGEN RESOURCES

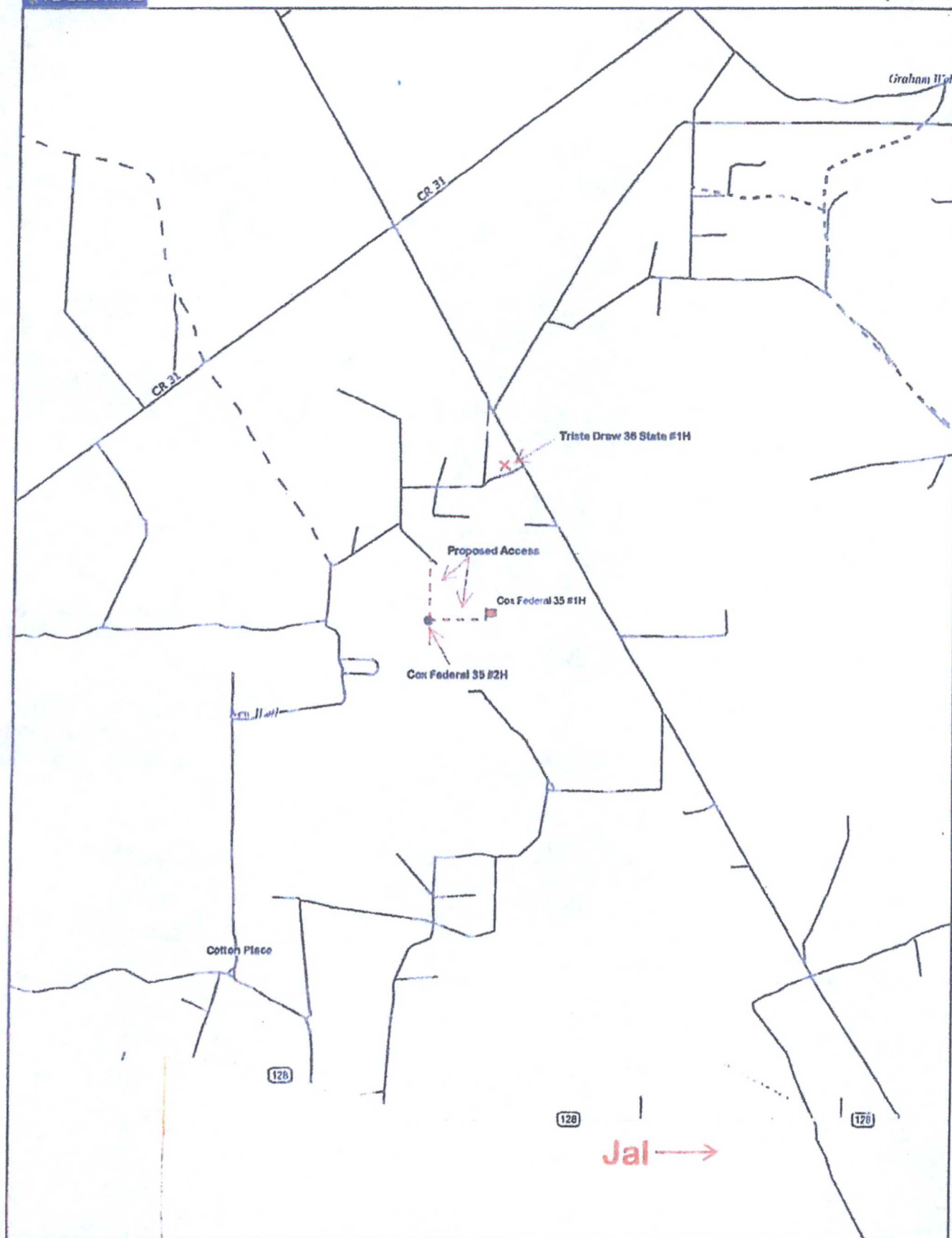
SECTION 35
T-23-S, R-32-E
LEA COUNTY, NEW MEXICO.

Watson
Professional
Group Inc



P.O. DRAWER 11186
MIDLAND, TEXAS 79702
(432) 520-9200
FAX (432) 520-9212
www.watson-engineers.com

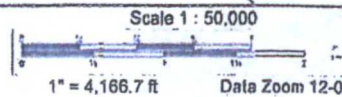
CONSULTING ENGINEERS, LAND SURVEYORS & PLANNERS

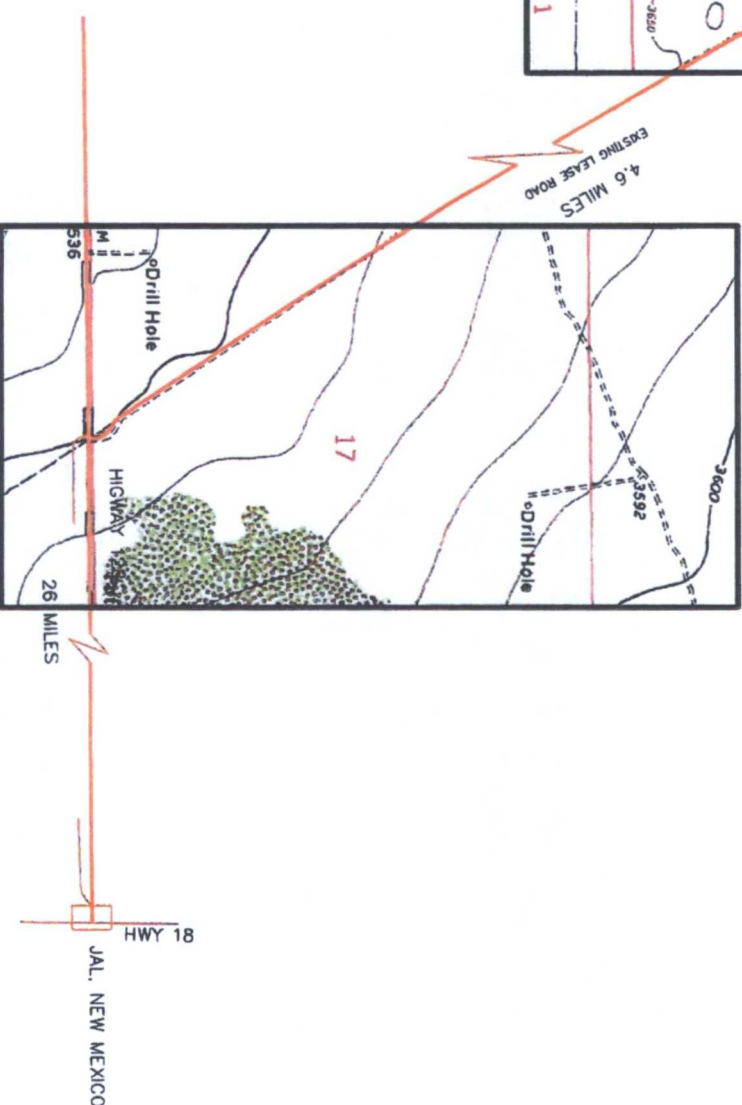
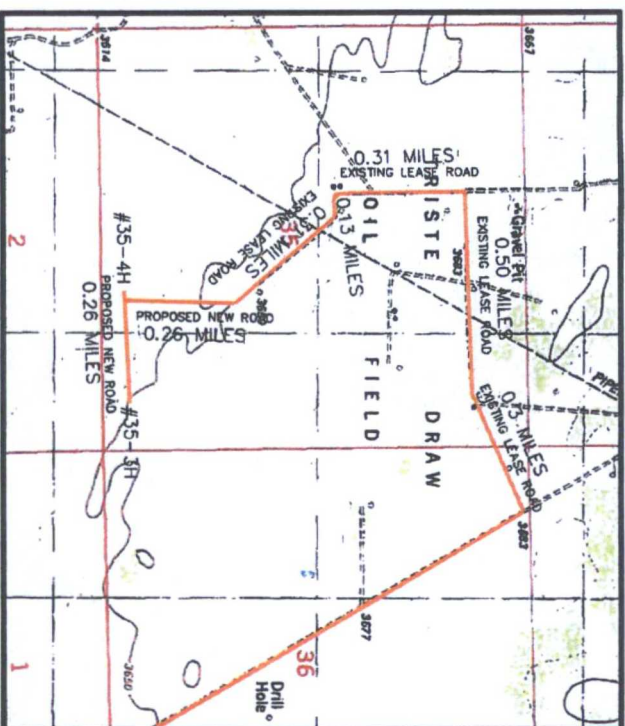


Data use subject to license.

© DeLorme, Topo USA® 8.

www.delorme.com





Basis of Bearing is SPC NAD 83 NEW MEXICO EAST

ROUTE MAP TO COX FEDERAL 35-3H & 35-4H

ENERGEN RESOURCES

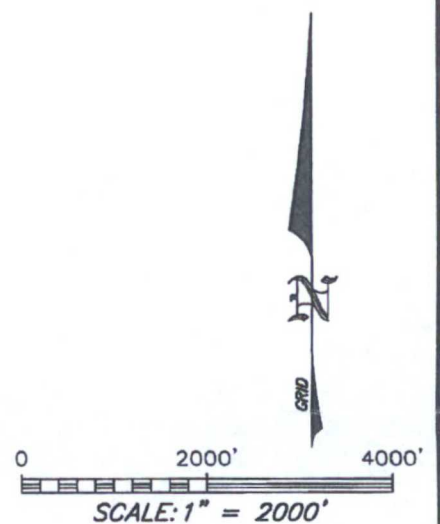
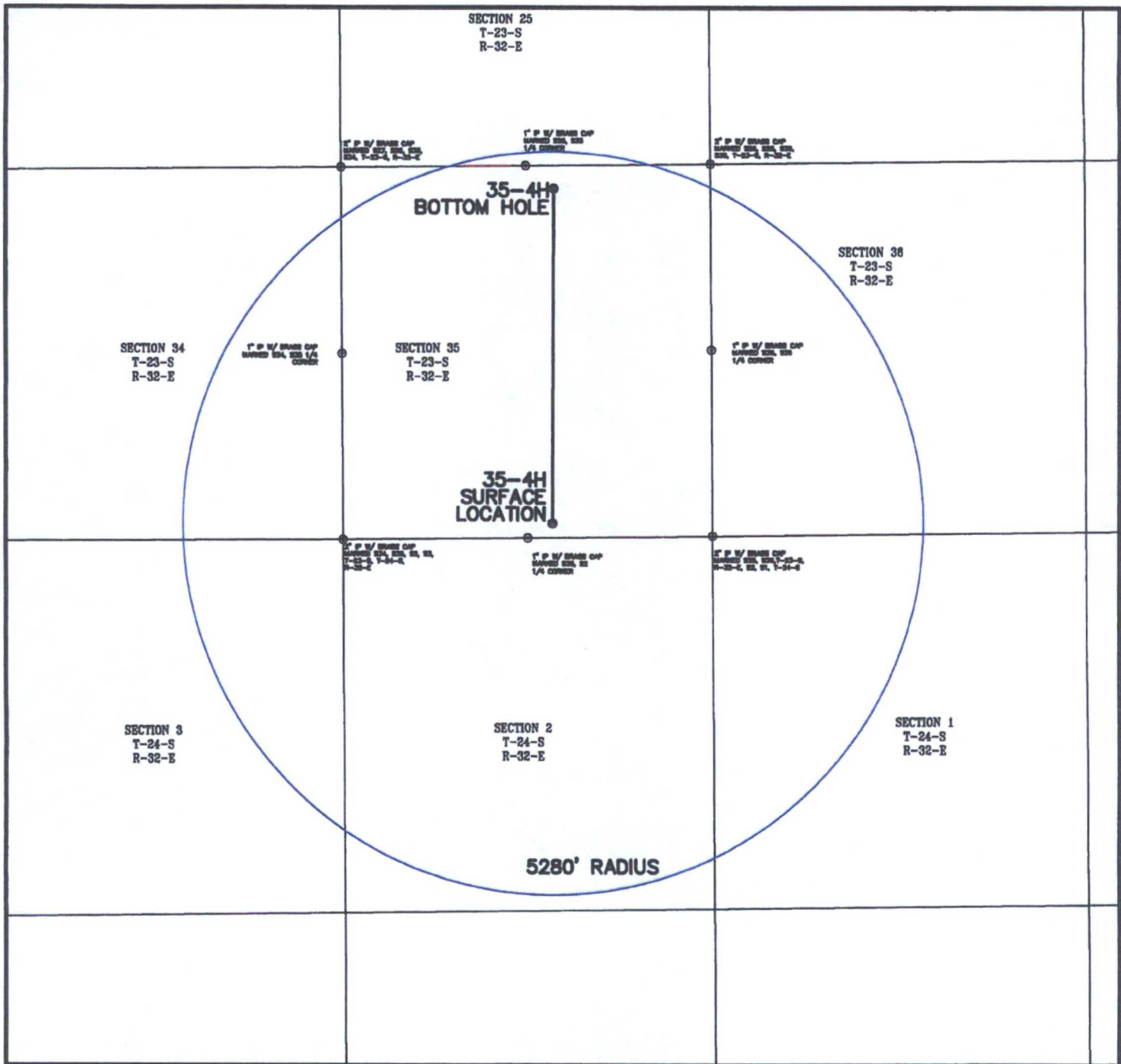
ROUTE MAP OF ROADS FROM HWY 128 TO WELLS
T-23-S, R-32-E
LEA COUNTY, NEW MEXICO.

Watson Professional Group Inc



P.O. DRAWER 1186
MIDLAND, TEXAS 79702
(432) 520-9200
FAX (432) 520-9222

CONSULTING ENGINEERS, LAND SURVEYORS & PLANNERS



WO #14-1071-00

Basis of Bearing is SPC NAD 83 NEW MEXICO EAST



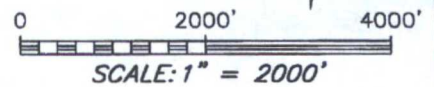
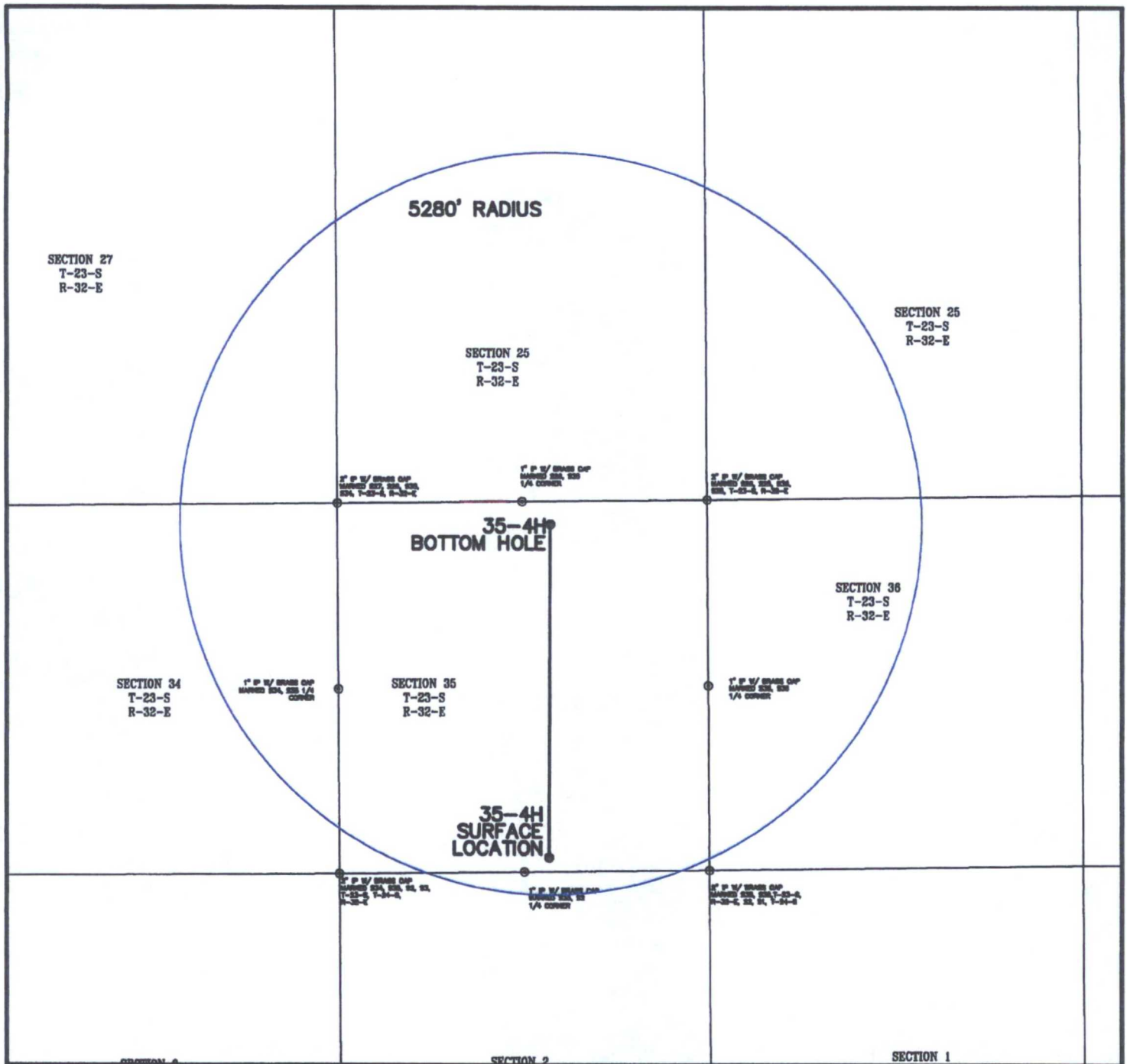
P.O. DRAWER 11186
MIDLAND, TEXAS
79702
(432) 520-9200
FAX (432) 520-9212
wdwatson@wpg-us.com

CONSULTING ENGINEERS, LAND SURVEYORS & PLANNERS

COX FEDERAL 35-4H SURFACE LOCATION

ENERGEN RESOURCES

SECTION 35
T-23-S, R-32-E
LEA COUNTY, NEW MEXICO.



WO #14-1071-00

Basis of Bearing is SPC NAD 83 NEW MEXICO EAST

COX FEDERAL 35-4H BOTTOM HOLE

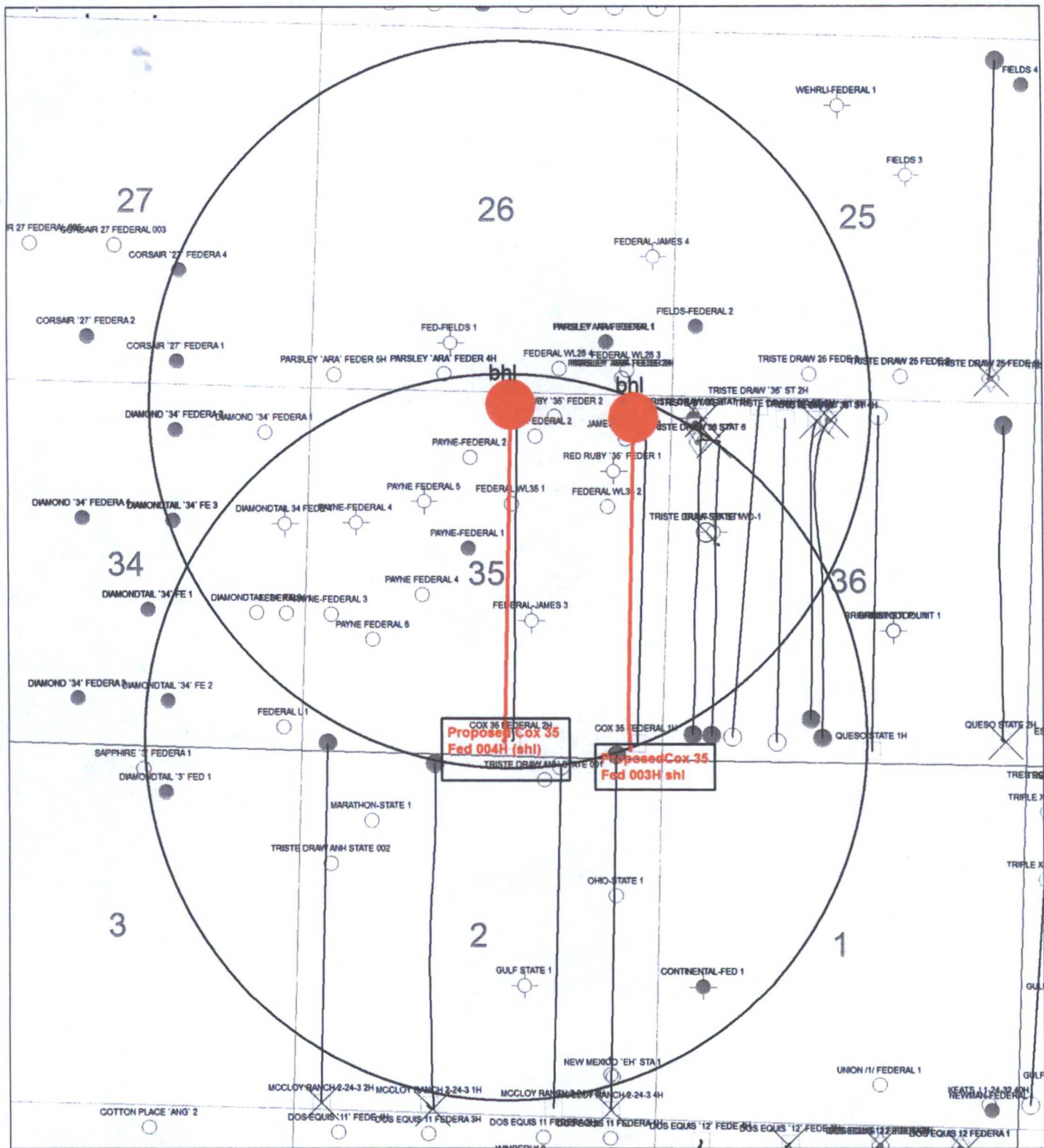
ENERGEN RESOURCES

SECTION 35
T-23-S, R-32-E
LEA COUNTY, NEW MEXICO.



P.O. DRAWER 11186
MIDLAND, TEXAS
79702
(432) 520-9200
FAX (432) 520-9212
wdwatson@wpg-us.com

CONSULTING ENGINEERS, LAND SURVEYORS & PLANNERS



ENERGEN
RESOURCES

Proposed Well Cox 35 Federal 4H
Showing 1-mile radius around SHL and BHL
Delaware Basin
Lee County, NM

Print Date: 19 March, 2014

Drawn By:

Scale: <scale>

Document Name: TERRY BURNS COX
WELLS.GMP