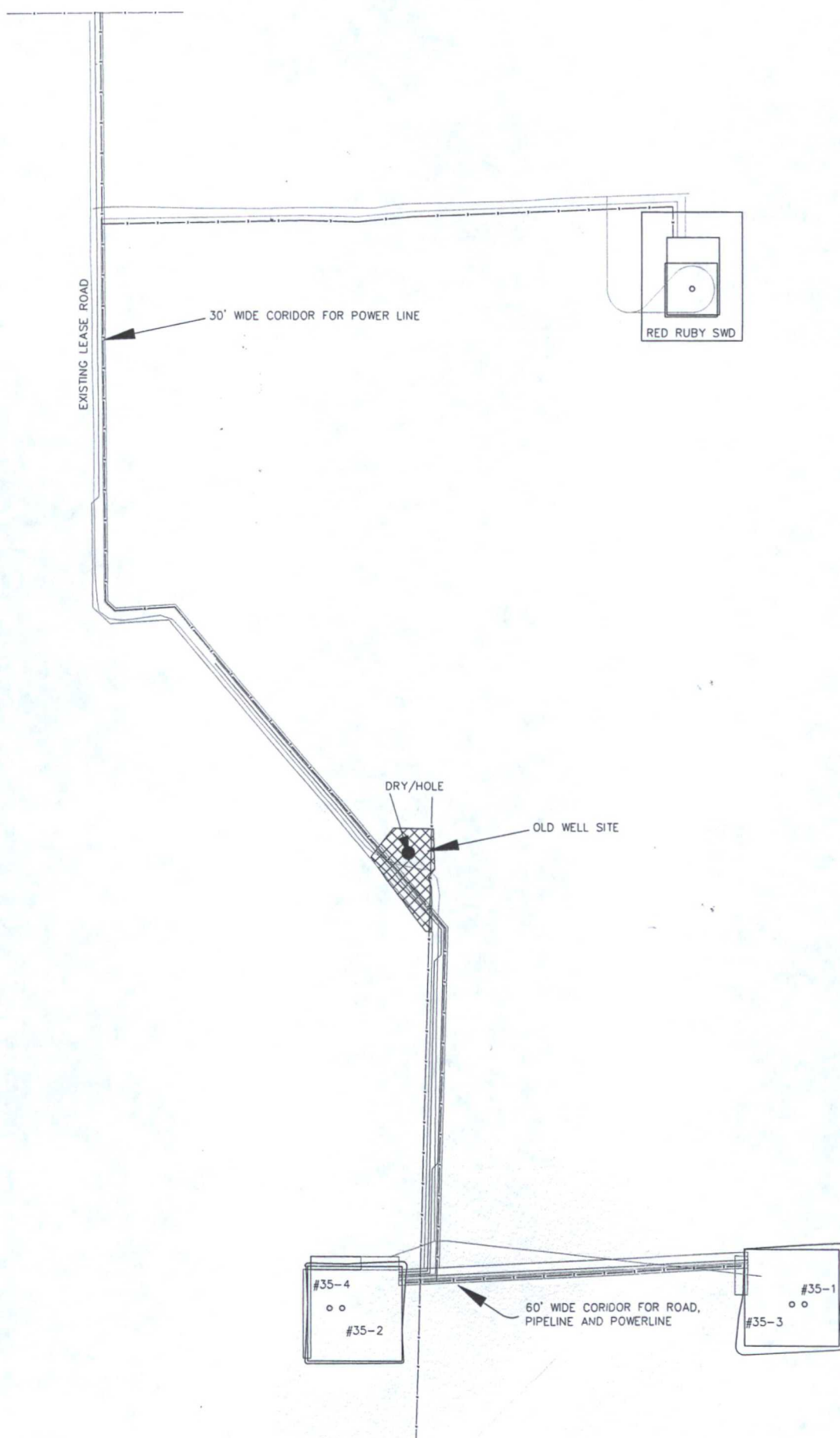


- PROPOSED ELEC. LINE  
4 INCH WATER SORT TO SHD PIPELINE  
4 INCH BURNED SORT GAS RADIANT PIPELINE  
8 INCH BURNED GAS FROGPAN PIPELINE  
2 INCH BURNED GAS LIFT FROGPAN PIPELINE  
8 INCH GAS SORT PIPELINE  
4 INCH WATER SORT PIPELINE  
PROPOSED RIGHT-OF-WAY  
ROAD TO WELLS  
DCV EXISTING PIPELINE



SCALE: 1" = 200'

0 SCALE: 1" = 200' 200' 400'

Base of Bedrock is SPC NAD 83 NEW MEXICO EAST

## CENTERLINE DESCRIPTION

DESCRIPTION: BEING A CENTERLINE DESCRIPTION FOR A PROPOSED 6 INCH BURIED GAS FIBERSPAR PIPELINE WITHIN A RIGHT-OF-WAY CORRIDOR, LOCATED IN SECTIONS 35, T-23-S, R-32-E, LEA COUNTY, NEW MEXICO, AND BEING MORE PARTICULARLY DESCRIBED AS FOLLOWS:

BEGINNING AT A 1/2 INCH IRON ROD WITH CAP MARKED "3959" SET (STA 0+00 N:459512.4 E:753892.4 LAT:32°15'41.1" LON:103°38'44.5") IN THE SAID RIGHT-OF-WAY CORRIDOR, FROM WHICH A 1 INCH IRON PIPE WITH BRASS CAP MARKED "S34, S35 1/4" FOUND ON THE COMMON LINE OF THE SAID SECTION 35, AND SECTION 34, OF THE SAID T23S R32E, BEARS SOUTH 87°20'40" WEST, A DISTANCE OF 2556.18 FEET, A 2 INCH IRON PIPE BRASS CAP WITH MARKED "S34, S35, S2, S3, T-23-S, T-24-S, R-32-E" FOUND FOR THE COMMON CORNER OF THE SAID SECTIONS 35 AND 34, AND SECTIONS 2 AND 3, T24S R32E, BEARS SOUTH 42°37'37" WEST, A DISTANCE OF 3749.13 FEET, TO A 1/2 INCH IRON ROD WITH CAP MARKED "3959" (N:459742.9 E:753734.3) SET IN A EAST LINE OF THE SAID RIGHT-OF-WAY CORRIDOR, BEARS NORTH 34°26'10" WEST, A DISTANCE OF 279.49 FEET, AND A 1/2 INCH IRON ROD WITH CAP MARKED "3959" (N:459680.7 E:753708.9) SET IN A WEST LINE OF THE SAID RIGHT-OF-WAY CORRIDOR, BEARS NORTH 47°27'52" WEST, A DISTANCE OF 249.06 FEET;

THENCE SOUTH 40°41'56" EAST, A DISTANCE OF 1377.09 FEET TO A 1/2 INCH IRON WITH CAP MARKED "3959" SET (STA 13+77.09 N:458468.3 E:754790.3) HEREOF, FROM WHICH A 1/2 INCH IRON ROD WITH CAP MARKED "3959" (N:458477.3 E:754815.6) SET IN A NORTHEAST LINE OF THE SAID RIGHT-OF-WAY CORRIDOR, BEARS NORTH 70°28'30" EAST, A DISTANCE OF 26.76 FEET, AND A 1/2 INCH IRON ROD WITH CAP MARKED "3959" (N:458456.1 E:754755.0) SET IN A SOUTHWEST LINE OF THE SAID RIGHT-OF-WAY CORRIDOR, BEARS SOUTH 70°55'01" WEST, A DISTANCE OF 37.43 FEET HEREOF;

THENCE SOUTH 00°52'57" WEST, A DISTANCE OF 100.00 FEET TO A 1/2 INCH IRON ROD WITH CAP MARKED "3959" SET (STA 14+77.09 N:458368.3 E:754788.8) HEREOF, FROM WHICH A 1/2 INCH IRON ROD WITH CAP MARKED "3959" (N:458477.3 E:754815.6) SET IN A EAST LINE OF THE SAID RIGHT-OF-WAY CORRIDOR, BEARS NORTH 13°48'09" EAST, A DISTANCE OF 112.17 FEET, AND A 1/2 INCH IRON ROD WITH CAP MARKED "3959" (N:458456.1 E:754755.0) SET IN A WEST LINE OF THE SAID RIGHT-OF-WAY CORRIDOR BEARS NORTH 21°05'00" WEST, A DISTANCE OF 95.04 FEET;

THENCE SOUTH 45°52'18" WEST, A DISTANCE OF 37.19 FEET TO A 1/2 INCH IRON ROD WITH CAP MARKED "3959" SET (STA 15+14.28 N:458342.4 E:754762.1) HEREOF, FROM WHICH A 1/2 INCH IRON ROD WITH CAP MARKED "3959" (N:458477.3 E:754815.6) SET IN A NORTHEAST LINE OF THE SAID RIGHT-OF-WAY CORRIDOR, BEARS NORTH 21°37'37" EAST, A DISTANCE OF 145.04 FEET, AND A 1/2 INCH IRON ROD WITH CAP MARKED "3959" (N:458456.1 E:754755.0) SET IN A NORTHWEST LINE OF THE SAID RIGHT-OF-WAY CORRIDOR BEARS NORTH 03°35'38" WEST, A DISTANCE OF 113.87 FEET;

THENCE SOUTH 01°09'00" WEST, A DISTANCE OF 1214.36 FEET TO A 1/2 INCH IRON ROD WITH CAP MARKED "3959" SET (STA 27+28.64 N:457128.3 E:754737.7) HEREOF, FROM WHICH A 1/2 INCH IRON ROD WITH CAP MARKED "3959" (N:457140.7 E:754783.0) SET IN AN EAST "ELL" CORNER OF THE SAID RIGHT-OF-WAY CORRIDOR BEARS NORTH 74°43'57" EAST, A DISTANCE OF 46.93 FEET, AND A 1/2 INCH IRON ROD WITH CAP MARKED "3959" (N:457137.7 E:754723.1) SET IN A WEST "ELL" CORNR OF THE SAID RIGHT-OF-WAY CORRIDOR BEARS NORTH 57°34'09" WEST, A DISTANCE OF 17.38 FEET;

THENCE SOUTH 87°18'18" WEST, A DISTANCE OF 14.19 FEET TO A 1/2 INCH IRON ROD WITH CAP MARKED "3959" SET (STA 27+42.83 N:457127.7 E:754723.6) HEREOF, FROM WHICH A 1/2 INCH IRON ROD WITH A CAP MARKED "3959" (N:457137.7 E:754723.1) SET IN A NORTH "ELL" CORNER OF THE SAID RIGHT-OF-WAY CORRIDOR BEARS NORTH 02°49'39" WEST, A DISTANCE OF 10.00 FEET, AND A 1/2 INCH IRON ROD WITH CAP MARKED "3959" (N:457132.6 E:754624.5) SET IN A WEST CORNER OF THE SAID RIGHT-OF-WAY CORRIDOR BEARS NORTH 87°10'26" WEST, A DISTANCE OF 99.19 FEET;

THENCE SOUTH 87°02'24" WEST, A DISTANCE OF 99.40 FEET TO A 1/2 INCH IRON ROD WITH CAP MARKED "3959" SET (STA 28+42.23 N:457122.5 E:754624.3 LAT:32°15'17.4" LON:103°38'36.2") HEREOF, FOR THE END OF THIS LINE, FROM WHICH A 1/2 INCH IRON ROD WITH CAP MARKED "3959" (N:457132.6 E:754624.5) SET IN A NORTH CORNER OF THE SAID RIGHT-OF-WAY CORRIDOR BEARS NORTH 01°04'56" EAST, A DISTANCE OF 10.02 FEET, A 1/2 INCH IRON ROD WITH CAP MARKED "3959" (N:457071.6 E:754623.3) SET IN A SOUTH CORNER OF THE SAID RIGHT-OF-WAY CORRIDOR BEARS SOUTH 01°04'56" WEST, A DISTANCE OF 50.97 FEET, THE SAID BRASS CAP MARKED "S34, S35, S2, S3, T-23-S, T-24-S, R-32-E" BEARS SOUTH 83°34'08" WEST, A DISTANCE OF 3291.64 FEET, A 1 INCH IRON PIPE WITH BRASS CAP MARKED "S35, S2 1/4 CORNER" FOUND ON THE COMMON LINE OF THE SAID SECTIONS 35 AND 2, BEARS SOUTH 61°17'00" WEST, A DISTANCE OF 716.22 FEET, AND A STAKE SET FOR THE #35-2 WELL LOCATION BEARS SOUTH 58°15'07" WEST, A DISTANCE OF 265.84 FEET.

SAID CENTERLINE CONTAINS 2842.23 FEET, 172.26 RODS, MORE OR LESS.



SCALE: 1" = 1000'

0 1000' 2000'

NOTES:  
1. COORDINATES AND BEARINGS ARE BASED ON LAMBERT CONICAL PROJECTION OF THE STATE PLANE COORDINATE SYSTEM NAD 83, CORRS 86, TEXAS CENTRAL ZONE WITH A CONVERGENCE ANGLE OF 0.37067599 AND DISTANCES ARE OF GRID VALUE WITH A CENTRAL COMBINED SCALE FACTOR OF 0.99978903. THE POSITIONAL TOLERANCE OF THIS SURVEY EXCEEDS THE REQUIREMENTS FOR A EASEMENT SURVEY.  
2. THIS SURVEY WAS PERFORMED WITHOUT THE BENEFIT OF A TITLE REPORT AND REVIEW OF THE ABSTRACT OF TITLE. THERE MAY BE EASEMENTS AND/OR COVENANTS AFFECTING THIS PROPERTY NOT SHOWN HEREON. LOCATION OF IMPROVEMENTS AND/OR EASEMENTS WERE BEYOND COMMISSIONED SCOPE OF THIS PROJECT AND HAVE BEEN SPECIFICALLY OMITTED. VESTING DOCUMENTS NOT FURNISHED FOR THIS SURVEY.  
3. SEE DOCUMENTS AND ELECTRONIC DATA FILED IN THE OFFICE OF WPG INC FOR COMPLETE RECONSTRUCTION OF THESE SECTIONS OR BLOCKS.

FILE: \PROJECTS\NEW MEXICO\LEA\T23S R32E.DWG NO: 13-1155-00 AND 13-1156-00



Basis of Bearing is SPC NAD 83 NEW MEXICO EAST

PROPOSED 6 INCH BURIED GAS FIBERSPAR  
1500 SERIES PIPELINE IN CORRIDOR

**ENERGEN RESOURCES CORPORATION**

COX 35 FEDERAL LEASE

A PROPOSED 6 INCH BURIED GAS FIBERSPAR 1500  
SERIES PIPELINE IN SECTION 35  
T-23-S, R-32-E  
LEA COUNTY, NEW MEXICO.

**Watson  
Professional  
Group Inc**



P.O. DRAWER 11186  
MIDLAND, TEXAS  
79702  
(432) 520-9200  
FAX (432) 520-9212  
wdwatson@wpg-us.com

CONSULTING ENGINEERS, LAND SURVEYORS & PLANNERS

I, THE UNDERSIGNED, DO HEREBY CERTIFY THAT THE FOREGOING DESCRIPTION AND PLAT HERETO IS A REPRESENTATION OF A SURVEY COMPLETED ON THE GROUND UNDER MY SUPERVISION AND IS TRUE AND CORRECT TO THE BEST OF MY KNOWLEDGE AND BELIEF.

W.D. Watson, Jr. NEW MEXICO P.L.S 3959

5/9/14

DATE



T-23-S  
R-32-E

LINE	BEARING	DISTANCE
L1	S 40°41'56" E	1377.09'
L2	S 00°52'57" W	100.00'
L3	S 45°52'18" W	37.19'
L4	S 01°09'00" W	1214.36'
L5	S 87°18'18" W	14.19'
L6	S 87°02'24" W	99.40'

## LEGEND

- FENCE LINE
- POWER LINE
- PIPELINE
- EXISTING ROAD
- PROPOSED ROW
- PROPOSED LEASE ROAD
- WOOD STAKE SET
- STAKED WELL LOCATION
- IRON ROD SET
- ◆ CONC MONUMENT W/ BRASS CAP

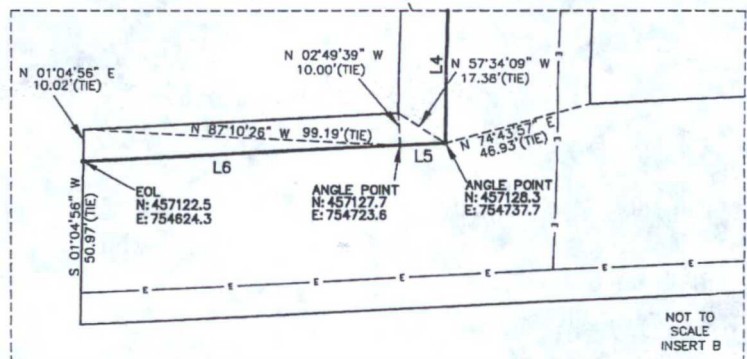
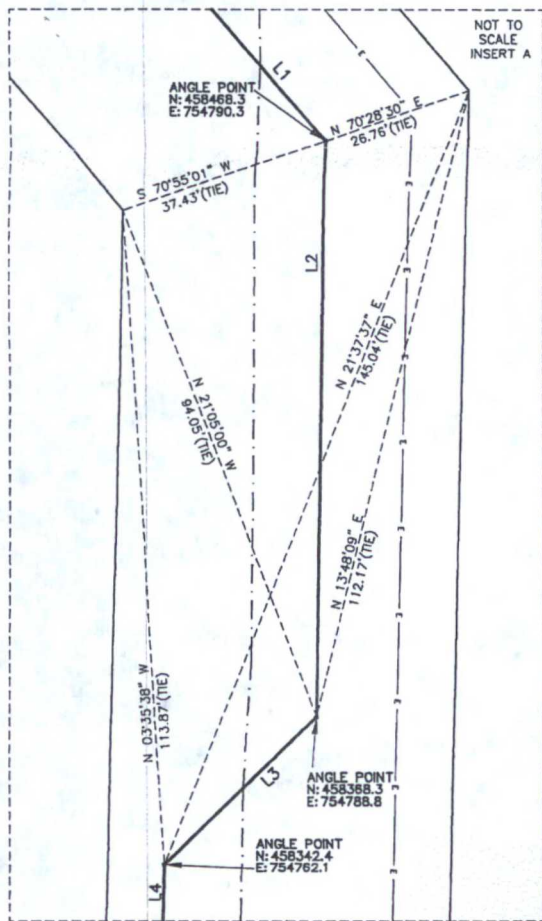
1" IP W/ BRASS CAP MARKED  
S34, S35 1/4 CORNER  
GRID N: 459393.940  
GRID E: 751338.938  
LATITUDE: 32°15'40.039"  
LONGITUDE: -103°39'14.248"

2" IP W/ BRASS CAP MARKED S34, S35, S2,  
S3, T-23-S, T-24-S, R-32-E  
GRID N: 456753.843  
GRID E: 751353.373  
LATITUDE: 32°15'13.914"  
LONGITUDE: -103°38'14.274"

T-24-S  
R-32-E

1" IP W/ BRASS CAP  
MARKED S35, S2  
1/4 CORNER  
GRID N: 456778.405  
GRID E: 753996.178  
LATITUDE: 32°15'13.990"

2" IP W/ BRASS CAP  
MARKED S35, S36, T-23-S,  
R-32-E, S2, S1, T-24-S  
GRID N: 458806.231  
GRID E: 756639.446  
LATITUDE: 32°15'14.097"  
LONGITUDE: -103°38'12.715"



NOTES:  
1. COORDINATES AND BEARINGS ARE BASED ON LAMBERT CONICAL PROJECTION OF THE STATE PLANE COORDINATE SYSTEM NAD 83, CORRS 96, TEXAS CENTRAL ZONE WITH A CONVERGENCE ANGLE OF 0.37067599 AND DISTANCES ARE OF GRID VALUE WITH A CENTRAL COMBINED SCALE FACTOR OF 0.99978903. THE POSITIONAL TOLERANCE OF THIS SURVEY EXCEEDS THE REQUIREMENTS FOR A EASEMENT SURVEY.  
2. THIS SURVEY WAS PERFORMED WITHOUT THE BENEFIT OF A TITLE REPORT AND REVIEW OF THE ABSTRACT OF TITLE. THERE MAY BE EASEMENTS AND/OR COVENANTS AFFECTING THIS PROPERTY NOT SHOWN HEREON. LOCATION OF IMPROVEMENTS AND/OR EASEMENTS WERE BEYOND COMMISSIONED SCOPE OF THIS PROJECT AND HAVE BEEN SPECIFICALLY OMITTED. VESTING DOCUMENTS NOT FURNISHED FOR THIS SURVEY.  
3. SEE DOCUMENTS AND ELECTRONIC DATA FILED IN THE OFFICE OF WPG INC FOR COMPLETE RECONSTRUCTION OF THESE SECTIONS OR BLOCKS.

FILE: T:\PROJECTS\NEW MEXICO\LEA\T23S R32E.DWG WDW 13-1155-00 AND 13-1156-00

**Watson**  
Professional  
Group Inc



P.O. DRAWER 11186  
MIDLAND, TEXAS  
79702  
(432) 520-9200  
FAX (432) 520-9212  
wdwatson@wpg-usa.com

CONSULTING ENGINEERS, LAND SURVEYORS & PLANNERS



Basis of Bearing is SPC NAD 83 NEW MEXICO EAST

PROPOSED 6 INCH BURIED GAS FIBERSPAR  
1500 SERIES PIPELINE IN CORRIDOR

**ENERGEN RESOURCES CORPORATION**  
COX 35 FEDERAL LEASE  
A PROPOSED 6 INCH BURIED GAS FIBERSPAR 1500  
SERIES PIPELINE IN SECTION 35  
T-23-S, R-32-E  
LEA COUNTY, NEW MEXICO.

I, THE UNDERSIGNED, DO HEREBY CERTIFY THAT THE FOREGOING DESCRIPTION AND PLAT HERETO IS A REPRESENTATION OF A SURVEY COMPLETED ON THE GROUND UNDER MY SUPERVISION AND IS TRUE AND CORRECT TO THE BEST OF MY KNOWLEDGE AND BELIEF.

W.D. Watson, Jr. NEW MEXICO P.L.S 3959

5/9/14  
DATE



## EASEMENT PLAT

## LEGEND

- FENCE LINE  
 ——— POWER LINE  
 ——— PIPELINE  
 ——— CENTER ROAD  
 ——— EXISTING ROAD  
 ——— PROPOSED ROW  
 ——— PROPOSED LEASE ROAD  
 ■ WOOD STAKE SET  
 ○ STAKED WELL LOCATION  
 \* IRON ROD SET  
 ◆ CONC MONUMENT W/ BRASS CAP

2" IP W/ BRASS CAP MARKED S34, S35, S2, S3, T-23-S, T-24-S, R-32-E  
 GRID N: 459393.940  
 GRID E: 751322.412  
 LATITUDE: 32°15'05.170"  
 LONGITUDE: -103°38'14.245"

2" IP W/ BRASS CAP MARKED S27, S26, S35, S34, T-23-S, R-32-E  
 GRID N: 462034.531  
 GRID E: 751322.412  
 LATITUDE: 32°15'05.170"  
 LONGITUDE: -103°38'14.245"

1" IP W/ BRASS CAP MARKED S26, S35, 1/4 CORNER  
 GRID N: 462059.749  
 GRID E: 753961.897  
 LATITUDE: 32°16'06.253"  
 LONGITUDE: -103°38'43.503"

T-23-S  
R-32-E

2" IP W/ BRASS CAP MARKED S26, S25, S36, S35, T-23-S, R-32-E  
 GRID N: 462087.443  
 GRID E: 756602.244  
 LATITUDE: 32°16'06.358"  
 LONGITUDE: -103°38'12.750"

1" IP W/ BRASS CAP MARKED S34, S35 1/4 CORNER  
 GRID N: 459393.940  
 GRID E: 751322.412  
 LATITUDE: 32°15'05.170"  
 LONGITUDE: -103°38'14.245"

1" IP W/ BRASS CAP MARKED S35, S36 1/4 CORNER  
 GRID N: 459448.049  
 GRID E: 756620.959  
 LATITUDE: 32°15'40.240"  
 LONGITUDE: -103°38'12.751"

LINE	BEARING	DISTANCE
L1	N 00°00'00" W	142.85'
L2	S 87°50'14" W	1050.20'
L3	S 84°34'19" W	220.21'
L4	N 88°51'34" W	212.00'
L5	S 88°57'43" W	803.85'
L6	S 00°28'37" E	1500.40'
L7	S 46°57'02" E	53.86'
L8	N 86°14'33" E	237.74'
L9	S 40°30'17" E	1653.01'
L10	S 01°23'39" W	1357.57'
L11	S 87°08'33" W	145.52'

0+00 BEGINNING OF LINE ON EDGE OF PAD  
 N:461178.9 E:755724.0  
 LAT:32°15'57.4" LONG:103°38'23.0"

1+42.85 P.I. LT. 92°10'  
 N:461321.8 E:755724.0

4+06.70 BURIED PIPELINE  
 9+65.16 LG & E BURIED PIPELINE  
 11+93.05 P.I. LT. 03°18'  
 N:461282.1 E:754674.6

14+13.26 P.I. RT. 06°34'  
 N:461261.3 E:754455.4

16+25.26 P.I. LT. 02°11'  
 N:461265.5 E:754243.4

21+40.72 2 TRACK ROAD  
 24+16.09 EDGE OF 60' CORRIDOR  
 24+26.11 OVERHEAD ELECTRIC LINE  
 24+29.11 P.I. LT. 89°26'  
 N:461251.0 E:753439.7

25+28.87 POLY NEW MEXICO  
 25+66.12 UPR HIGHLANDS BURIED PIPELINE  
 34+85.63 EOG RESOURCES BURIED PIPELINE  
 39+29.51 P.I. LT. 46°28'  
 N:459750.8 E:753452.2

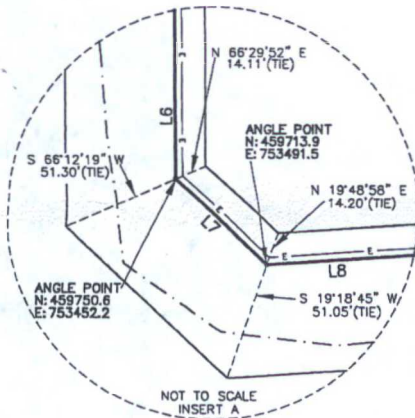
39+83.37 P.I. LT. 46°48'  
 N:459713.9 E:753491.5

42+21.11 P.I. RT. 53°15'  
 N:459729.4 E:753728.8

43+29.35 REEF BURIED PIPELINE  
 44+82.28 DCP BURIED PIPELINE  
 55+25.10 LEASE ROAD  
 57+80.48 DCP BURIED PIPELINE  
 58+74.12 P.I. RT. 41°54'  
 N:458472.6 E:754802.4

71+01.19 LEASE ROAD  
 72+07.11 EDGE OF 60' CORRIDOR  
 72+31.69 P.I. RT. 85°45'  
 N:457118.4 E:754789.4

72+93.98 DCP BURIED PIPELINE  
 73+77.21 END OF LINE  
 N:457108.2 E:754624.0  
 LAT:32°15'17.2" LONG:103°38'38.2"



SCALE: 1" = 1000'

0 1000' 2000'

NOTES:  
 1. COORDINATES AND BEARINGS ARE BASED ON LAMBERT CONICAL PROJECTION OF THE STATE PLANE COORDINATE SYSTEM NAD 83, CORRS 96, TEXAS CENTRAL ZONE WITH A CONVERGENCE ANGLE OF 0.37067598 AND DISTANCES ARE OF GRID VALUE WITH A CENTRAL COMBINED SCALE FACTOR OF 0.99978903. THE POSITIONAL TOLERANCE OF THIS SURVEY EXCEEDS THE REQUIREMENTS FOR AN EASEMENT SURVEY.  
 2. THIS SURVEY WAS PERFORMED WITHOUT THE BENEFIT OF A TITLE REPORT AND REVIEW OF THE ABSTRACT OF TITLE. THERE MAY BE EASEMENTS AND/OR COVENANTS AFFECTING THIS PROPERTY NOT SHOWN HEREON. LOCATION OF IMPROVEMENTS AND/OR EASEMENTS WERE BEYOND COMMISSIONED SCOPE OF THIS PROJECT AND HAVE BEEN SPECIFICALLY OMITTED. VESTING DOCUMENTS NOT FURNISHED FOR THIS SURVEY.  
 3. SEE DOCUMENTS AND ELECTRONIC DATA FILED IN THE OFFICE OF WPG INC FOR COMPLETE RECONSTRUCTION OF THESE SECTIONS OR BLOCKS.

FILE: \PROJECTS\NEW MEXICO\LEA\T23S R32E.DWG WDJ 13-1155-00 AND 13-1156-00



Basis of Bearing is SPC NAD 83 NEW MEXICO EAST

PROPOSED 4 INCH WATER SDR7 TO SWD PIPELINE IN CORRIDOR

ENERGEN RESOURCES CORPORATION

COX 35 FEDERAL LEASE

A PROPOSED 4 INCH WATER SDR7 TO SWD PIPELINE IN SECTION 35  
 T-23-S, R-32-E  
 LEA COUNTY, NEW MEXICO.

Watson  
Professional  
Group Inc



P.O. DRAWER 1106  
 MIDLAND, TEXAS  
 79702  
 (432) 520-9200  
 FAX (432) 520-9212  
 wd.watson@wpg-us.com

CONSULTING ENGINEERS, LAND SURVEYORS & PLANNERS

I, THE UNDERSIGNED, DO HEREBY CERTIFY THAT THE FOREGOING DESCRIPTION AND PLAT HERETO IS A REPRESENTATION OF A SURVEY COMPLETED ON THE GROUND UNDER MY SUPERVISION AND IS TRUE AND CORRECT TO THE BEST OF MY KNOWLEDGE AND BELIEF.

W.D. Watson, Jr. NEW MEXICO P.L.S 3959

5/9/14  
DATE



## CENTERLINE DESCRIPTION

DESCRIPTION: BEING A CENTERLINE DESCRIPTION FOR A PROPOSED 4 INCH WATER SDR 7 TO SWD PIPELINE WITHIN A RIGHT-OF-WAY CORRIDOR, LOCATED IN SECTIONS 35, T-23-S, R-32-E, LEA COUNTY, NEW MEXICO, AND BEING MORE PARTICULARLY DESCRIBED AS FOLLOWS:

BEGINNING AT A POINT (STA 0+00 N:461178.9 E:755724.0 LAT:32°15'57.4" LON:103°38'23.0") ON THE NORTH LINE OF THE RED RUBY SWD WELL PAD, FROM WHICH A 2 INCH IRON PIPE WITH A BRASS CAP MARKED "S26, S25, S36, S35, T-23-S, R-32-E" FOUND FOR THE COMMON CORNER OF THE SAID SECTION 35, AND SECTIONS 26, 25, AND 36, OF THE SAID T23S R32E, BEARS NORTH 44°01'43" EAST, A DISTANCE OF 1263.59 FEET, A 1 INCH IRON PIPE WITH A BRASS CAP MARKED "S35,S36 1/4 CORNER" FOUND ON THE COMMON LINE OF THE SAID SECTIONS 35 AND 36 BEARS SOUTH 27°23'34" EAST, A DISTANCE OF 1949.47 FEET, AND A STAKE SET FOR THE RED RUBY SWD WELL LOCATION BEARS SOUTH 15°46'30" EAST, A DISTANCE OF 207.83 FEET;

THENCE NORTH 00°00'00" WEST, A DISTANCE OF 142.85 FEET TO AN ANGLE POINT (STA 1+42.85 N:461321.8 E:755724.0) HEREOF;

THENCE SOUTH 87°50'14" WEST, A DISTANCE OF 1050.20 FEET TO AN ANGLE POINT (STA 11+93.05 N:461282.1 E:754674.6) HEREOF;

THENCE SOUTH 84°34'19" WEST, A DISTANCE OF 220.21 FEET TO AN ANGLE POINT (STA 14+13.26 N:461261.3 E:754455.4) HEREOF;

THENCE NORTH 88°51'34" WEST, A DISTANCE OF 212.00 FEET TO AN ANGLE POINT (STA 16+25.26 N:461265.5 E:754243.4) HEREOF;

THENCE SOUTH 88°57'43" WEST, A DISTANCE OF 803.85 FEET TO A 1/2 INCH IRON ROD WITH CAP MARKED "3959" SET (STA 24+29.11 N:461251.0 E:753439.7) HEREOF, IN THE SAID RIGHT-OF-WAY, FROM WHICH A 1/2 INCH IRON ROD WITH CAP MARKED "3959" (N:459756.3 E:753465.1) SET IN A SOUTHEAST LINE OF THE SAID RIGHT-OF-WAY CORRIDOR BEARS SOUTH 00°58'28" EAST, A DISTANCE OF 1494.93 FEET, A 1/2 INCH IRON ROD WITH A CAP MARKED "3959" (N:460163.4 E:753431.5) SET IN THE SOUTHWEST LINE OF THE SAID RIGHT-OF-WAY CORRIDOR BEARS SOUTH 00°25'55" WEST, A DISTANCE OF 1087.58 FEET, AND A 2 INCH IRON PIPE WITH A BRASS CAP MARKED "S27, S26, S35, S34, T-23-S, R-32-E" FOUND FOR THE COMMON CORNER OF THE SAID SECTIONS 35, AND 26, AND SECTION 34 AND 27, OF THE SAID T23S R32E, BEARS NORTH 69°41'29" WEST, A DISTANCE OF 2257.61 FEET;

THENCE SOUTH 00°28'37" EAST, A DISTANCE OF 1500.40 FEET TO A 1/2 INCH IRON ROD WITH CAP MARKED "3959" SET (STA 39+29.51 N:459750.6 E:753452.2) HEREOF, FROM WHICH A 1/2 INCH IRON ROD WITH CAP MARKED "3959" (N:459756.3 E:753465.1) SET IN A NORTHEAST LINE OF THE SAID RIGHT-OF-WAY CORRIDOR BEARS NORTH 66°29'32" EAST, A DISTANCE OF 14.11 FEET, AND A 1/2 INCH IRON ROD WITH CAP MARKED "3959" (N:459729.9 E:753405.2) SET IN THE SOUTHWEST LINE OF THE SAID RIGHT-OF-WAY CORRIDOR BEARS SOUTH 66°12'19" WEST, A DISTANCE OF 51.30 FEET;

THENCE SOUTH 46°57'02" EAST, A DISTANCE OF 53.86 FEET TO A 1/2 INCH IRON ROD WITH CAP MARKED "3959" SET (STA 39+83.37 N:459713.9 E:753491.5) HEREOF, FROM WHICH A 1/2 INCH IRON ROD WITH CAP MARKED "3959" (N:459727.2 E:753496.3) SET IN A NORTHEAST LINE OF THE SAID RIGHT-OF-WAY CORRIDOR BEARS NORTH 19°48'58" EAST, A DISTANCE OF 14.20 FEET, AND A 1/2 INCH IRON ROD WITH CAP MARKED "3959" (N:459665.7 E:753474.6) SET IN A SOUTHWEST LINE OF THE SAID RIGHT-OF-WAY CORRIDOR BEARS SOUTH 19°18'45" WEST, A DISTANCE OF 51.05 FEET;

THENCE NORTH 86°14'33" EAST, A DISTANCE OF 237.74 FEET TO A 1/2 INCH IRON ROD WITH CAP MARKED "3959" SET (STA 42+21.11 N:459729.4 E:753728.8) HEREOF, FROM WHICH A 1/2 INCH IRON ROD WITH CAP MARKED "3959" (N:459742.9 E:753734.3) SET IN A NORTHEAST LINE OF THE SAID RIGHT-OF-WAY CORRIDOR BEARS NORTH 22°30'10" EAST, A DISTANCE OF 14.54 FEET, AND A 1/2 INCH IRON ROD WITH CAP MARKED "3959" (N:459680.7 E:753708.9) SET IN A SOUTHWEST LINE OF THE SAID RIGHT-OF-WAY CORRIDOR BEARS SOUTH 22°14'04" WEST, A DISTANCE OF 52.61 FEET;

THENCE SOUTH 40°30'17" EAST, A DISTANCE OF 1653.01 FEET TO AN 1/2 INCH IRON ROD WITH CAP MARKED "3959" SET (STA 58+74.12 N:458472.6 E:754802.4) HEREOF, FROM WHICH A 1/2 INCH IRON ROD WITH CAP MARKED "3959" (N:458477.3 E:754815.6) SET IN A NORTHEAST LINE OF THE SAID RIGHT-OF-WAY CORRIDOR BEARS NORTH 70°21'51" EAST, A DISTANCE OF 13.98 FEET, AND A 1/2 INCH IRON ROD WITH CAP MARKED "3959" (N:458456.1 E:754755.0) SET IN A SOUTHWEST LINE OF THE SAID RIGHT-OF-WAY CORRIDOR BEARS SOUTH 70°50'07" WEST, A DISTANCE OF 50.21 FEET;

THENCE SOUTH 01°23'39" WEST, A DISTANCE OF 1357.57 FEET TO A 1/2 INCH IRON ROD WITH CAP MARKED "3959" SET (STA 72+31.69 N:457115.4 E:754769.4) HEREOF, FROM WHICH A 1/2 INCH IRON ROD WITH CAP MARKED "3959" (N:457140.7 E:754783.0) SET IN A NORTHEAST LINE OF THE SAID RIGHT-OF-WAY CORRIDOR BEARS NORTH 28°20'57" EAST, A DISTANCE OF 28.73 FEET, AND A 1/2 INCH IRON ROD WITH CAP MARKED "3959" (N:457137.7 E:754723.1) SET IN A NORTHWEST LINE OF THE SAID RIGHT-OF-WAY CORRIDOR BEARS NORTH 64°20'22" WEST, A DISTANCE OF 51.37 FEET;

THENCE SOUTH 87°08'33" WEST, A DISTANCE OF 145.52 FEET TO A 1/2 INCH IRON ROD WITH CAP MARKED "3959" SET (STA 73+77.21 N:457108.2 E:754624.0) HEREOF, 1/2 INCH IRON ROD WITH CAP MARKED "3959" (N:457132.6 E:754524.5) SET IN A NORTH LINE OF THE SAID RIGHT-OF-WAY CORRIDOR BEARS NORTH 01°04'56" EAST, A DISTANCE OF 24.41 FEET, A 1/2 INCH IRON ROD WITH CAP MARKED "3959" (N:457071.6 E:754623.3) SET IN A SOUTH LINE OF THE SAID RIGHT-OF-WAY CORRIDOR BEARS SOUTH 01°04'56" WEST, A DISTANCE OF 36.59 FEET, A 1 INCH IRON PIPE WITH A BRASS CAP MARKED "S35 1/4 CORNER" FOUND ON THE COMMON LINE OF THE SAID SECTION 35, AND SECTION 2, T24S R32E, BEARS SOUTH 62°17'29" WEST, A DISTANCE OF 709.18 FEET, A 2 INCH IRON PIPE WITH A BRASS CAP MARKED "S34, S35, S25, S3, T-23-S, T-24-S, R-32-E" FOUND FOR THE COMMON CORNER OF THE SAID SECTIONS 35, 34, AND 2, AND SECTION 3, OF THE SAID T24S R32E, BEARS SOUTH 83°49'02" WEST, A DISTANCE OF 3289.79 FEET, AND A STAKE SET FOR THE #35-2 WELL LOCATION BEARS SOUTH 60°55'59" WEST, A DISTANCE OF 258.32 FEET.

SAID CENTERLINE CONTAINS 7377.21 FEET, 447.10 RODS, MORE OR LESS.



NOTES:  
1. COORDINATES AND BEARINGS ARE BASED ON LAMBERT CONICAL PROJECTION OF THE STATE PLANE COORDINATE SYSTEM NAD 83, CORRS 84, TEXAS CENTRAL ZONE WITH A CONVERGENCE ANGLE OF 0.37087599 AND DISTANCES ARE OF GRID VALUE WITH A CENTRAL COMBINED SCALE FACTOR OF 0.99978903. THE POSITIONAL TOLERANCE OF THIS SURVEY EXCEEDS THE REQUIREMENTS FOR A EASEMENT SURVEY.  
2. THIS SURVEY WAS PERFORMED WITHOUT THE BENEFIT OF A TITLE REPORT AND REVIEW OF THE ABSTRACT OF TITLE. THERE MAY BE EASEMENTS AND/OR COVENANTS AFFECTING THIS PROPERTY NOT SHOWN HEREON. LOCATION OF IMPROVEMENTS AND/OR EASEMENTS WERE BEYOND COMMISSIONED SCOPE OF THIS PROJECT AND HAVE BEEN SPECIFICALLY OMITTED. BESTING DOCUMENTS NOT FURNISHED FOR THIS SURVEY.  
3. SEE DOCUMENTS AND ELECTRONIC DATA FILED IN THE OFFICE OF WPG INC FOR COMPLETE RECONSTRUCTION OF THESE SECTIONS OR BLOCKS.

FILE: \PROJECTS\NEW MEXICO\LEA\T23S R32E.DWG WPG 13-1155-00 AND 13-1156-00

**Watson  
Professional  
Group Inc**



P.O. DRAWER 11186  
MIDLAND, TEXAS  
79702  
(432) 520-9200  
FAX (432) 520-9212  
wdwatson@wpg-us.com

CONSULTING ENGINEERS, LAND SURVEYORS & PLANNERS



Basis of Bearing is SPC NAD 83 NEW MEXICO EAST

PROPOSED 4 INCH WATER SDR7 TO SWD PIPELINE IN CORRIDOR

**ENERGEN RESOURCES CORPORATION**

COX 35 FEDERAL LEASE

A PROPOSED 4 INCH WATER SDR7 TO SWD PIPELINE  
IN SECTION 35  
T-23-S, R-32-E  
LEA COUNTY, NEW MEXICO.

I, THE UNDERSIGNED, DO HEREBY CERTIFY THAT THE FOREGOING DESCRIPTION AND PLAT HERETO IS A REPRESENTATION OF A SURVEY COMPLETED ON THE GROUND UNDER MY SUPERVISION AND IS TRUE AND CORRECT TO THE BEST OF MY KNOWLEDGE AND BELIEF.

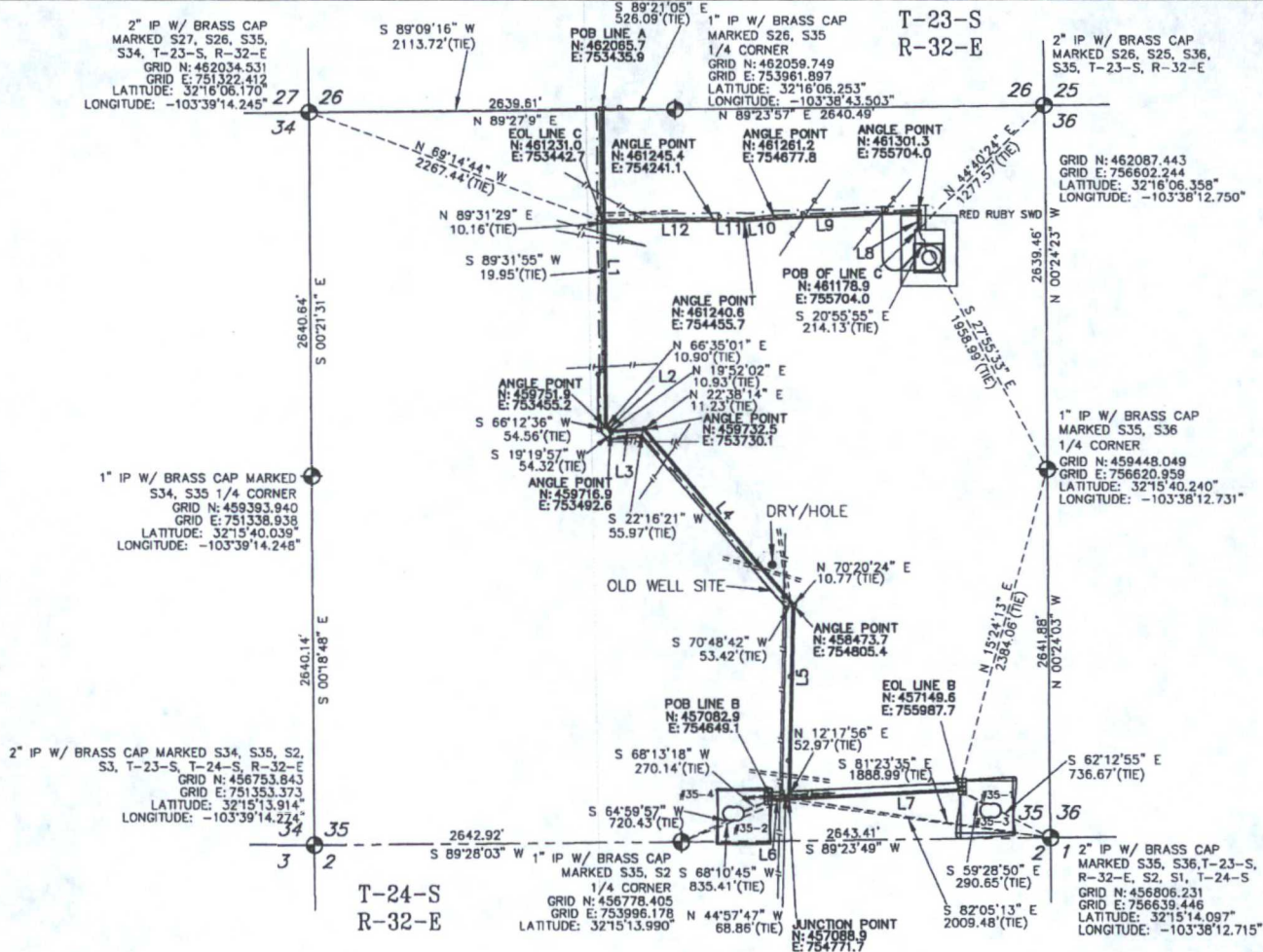
W.D. Watson, Jr. NEW MEXICO P.L.S 3959

5/9/14

DATE



## EASEMENT PLAT



LINE A  
0+00 BEGINNING OF LINE AT AN EXISTING OVERHEAD ELECTRIC LINE  
N:462065.7 E:753435.9  
LAT:32.2884293 LON:-103.6471190  
0+11.00 SECTION LINE  
N:462054.7 E:753436.0  
LAT:32.2883980 LON:-103.6471189  
6+40 BURIED PIPELINE  
7+80 CENTER LEASE ROAD  
9+15 POLY NM LINE  
9+52 UPR HIGHLANDS BURIED PIPELINE  
16+71 BURIED WATER LINE  
23+13.86 P.I. LT. 46°28'  
N:459751.9 E:753455.2  
23+65.14 P.I. LT. 46°48'  
N:459716.8 E:753492.6  
25+03.09 P.I. RT. 53°15'  
N:459732.5 E:753730.1  
27+14 BURIED PIPELINE  
28+65 DCP BURIED PIPELINE  
39+17 CENTER LEASE ROAD  
41+53 BURIED PIPELINE  
42+15 CENTER LEASE ROAD  
42+58.74 P.I. RT. 41°54'  
N:458473.7 E:754805.4  
54+82 CENTER LEASE ROAD  
56+22 PROPOSED PIPELINE  
56+24 CENTER LEASE ROAD  
56+43.88 END OF LINE A, TIE INTO LINE B  
N:457088.9 E:754771.7  
LAT:32.2547281 LON:-103.6429009

LINE B  
0+00 BEGINNING OF LINE  
N:457082.8 E:754649.1  
LAT:32.2547118 LON:-103.6432977  
0+57 DCP BURIED PIPELINE  
1+22.78 P.I. LT. 00°02' AT "TEE" WITH LINE A  
N:457088.9 E:754771.7  
LAT:32.2547261 LON:-103.6428009  
13+40.27 END OF LINE B  
N:457149.8 E:755987.7  
LAT:32.2548714 LON:-103.6389664

LINE C  
0+00 BEGINNING OF LINE  
N:461178.9 E:755704.0  
LAT:32.2659517 LON:-103.6397998  
1+22.36 P.I. LT. 92°14'  
N:461301.3 E:755704.0  
3+82.85 BURIED PIPELINE  
9+38.55 P.G. & E BURIED PIPELINE  
11+49.40 L.I. LT. 03°03'  
N:461261.2 E:754677.8  
13+72.42 P.I. RT. 06°35'  
N:461240.8 E:754455.7  
15+87.08 P.I. LT. 02°19'  
N:461245.4 E:754241.1  
20+99.87 LEASE ROAD  
23+75.44 EDGE OF CORRIDOR  
23+85.60 END OF LINE AT LINE A  
N:461231.0 E:753442.7  
LAT:32.2681349 LON:-103.6471142

LINE	BEARING	DISTANCE
L1	S 00°28'37" E	2313.86'
L2	S 46°57'02" E	51.28'
L3	N 86°14'33" E	237.95'
L4	S 40°30'17" E	1655.65'
L5	S 01°23'39" W	1385.14'
L6	N 87°10'27" E	122.78'
L7	N 87°08'32" E	1217.51'
L8	N 00°00'00" W	122.36'
L9	S 87°45'45" W	1027.04'
L10	S 84°42'16" W	223.02'
L11	N 88°42'40" W	214.66'
L12	S 88°58'00" W	798.52'

NOTES:  
1. COORDINATES AND BEARINGS ARE BASED ON LAMBERT CONICAL PROJECTION OF THE STATE PLANE COORDINATE SYSTEM NAD 83, CORRS 96, TEXAS CENTRAL ZONE WITH A CONVERGENCE ANGLE OF 0.37087589 AND DISTANCES ARE OF GRID VALUE WITH A CENTRAL COMBINED SCALE FACTOR OF 0.99978903. THE POSITIONAL TOLERANCE OF THIS SURVEY EXCEEDS THE REQUIREMENTS FOR A EASEMENT SURVEY.  
2. THIS SURVEY WAS PERFORMED WITHOUT THE BENEFIT OF A TITLE REPORT AND REVIEW OF THE ABSTRACT OF TITLE. THERE MAY BE EASEMENTS AND/OR COVENANTS AFFECTING THIS PROPERTY NOT SHOWN HEREON. LOCATION OF IMPROVEMENTS AND/OR EASEMENTS WERE BEYOND COMMISSIONED SCOPE OF THIS PROJECT AND HAVE BEEN SPECIFICALLY OMITTED. VESTING DOCUMENTS NOT FURNISHED FOR THIS SURVEY.  
3. SEE DOCUMENTS AND ELECTRONIC DATA FILED IN THE OFFICE OF WPG INC FOR COMPLETE RECONSTRUCTION OF THESE SECTIONS OR BLOCKS.

FILE 71/PROJECTS/NEW MEXICO/EA/7235 RJ3E.DWG WDF 13-1155-00 AND 13-1156-00

**Watson Professional Group Inc**



P.O. DRAWER 11186  
MIDLAND, TEXAS 79702  
FAX (432) 520-9200  
FAX (432) 520-9212  
wdwatson@wpg-us.com

CONSULTING ENGINEERS, LAND SURVEYORS &amp; PLANNERS



I, THE UNDERSIGNED, DO HEREBY CERTIFY THAT THE FOREGOING DESCRIPTION AND PLAT HERETO IS A REPRESENTATION OF A SURVEY COMPLETED ON THE GROUND UNDER MY SUPERVISION AND IS TRUE AND CORRECT TO THE BEST OF MY KNOWLEDGE AND BELIEF.

W.D. Watson, Jr. NEW MEXICO P.L.S 3959

5/9/14  
DATE

Basis of Bearing is SPC NAD 83 NEW MEXICO EAST

PROPOSED ELECTRIC LINE IN CORRIDOR

**ENERGEN RESOURCES CORPORATION**

COX 35 FEDERAL LEASE

A PROPOSED ELECTRIC LINE IN SECTION 35

T-23-S, R-32-E

LEA COUNTY, NEW MEXICO.



## CENTERLINE DESCRIPTION

DESCRIPTION: BEING A CENTERLINE DESCRIPTION FOR A PROPOSED ELECTRIC LINE WITHIN A RIGHT-OF-WAY CORRIDOR, LOCATED IN SECTIONS 35 AND 26, T-23-S, R-32-E, LEA COUNTY, NEW MEXICO, AND BEING MORE PARTICULARLY DESCRIBED AS FOLLOWS:

## LINE A

BEGINNING AT A POINT (STA 0+00 N:462065.7 E:753435.9 LAT:32.2684293 LON:-103.6471190) ON AN EXISTING OVERHEAD POWERLINE IN SAID SECTION 26, FROM WHICH A 2 INCH IRON PIPE WITH A BRASS CAP MARKED "S27, S26, S35, S34, T-23-S, R-32-E" FOUND, FOR THE COMMON CORNER OF SAID SECTIONS 26 AND 35, AND SECTIONS 34 AND 27, OF THE SAID T-23-S, R-32-E, BEARS SOUTH 89°09'18" WEST, A DISTANCE OF 2113.72 FEET, AND A 1 INCH IRON PIPE WITH BRASS CAP MARKED "S26, S35 1/4 CORNER" FOUND, BEARS SOUTH 89°21'05" EAST, A DISTANCE OF 526.09 FEET;

THENCE SOUTH 00°28'37" EAST, AT A DISTANCE OF 11.00 FEET PASSING THE COMMON LINE OF THE SAID SECTIONS 26 AND 35, CONTINUEING IN ALL A TOTAL DISTANCE OF 2313.86 FEET TO A 1/2 INCH IRON ROD WITH A CAP MARKED "3959" SET (STA 23+13.86 N:459751.9 E:753455.2) HEREOF, FROM WHICH A 1/2 INCH IRON ROD WITH A CAP MARKED "3959" (N:459756.3 E:753465.1) SET IN AN EAST LINE OF THE SAID RIGHT-OF-WAY CORRIDOR, BEARS NORTH 66°35'01" EAST, A DISTANCE OF 10.90 FEET, AND A 1/2 INCH IRON ROD WITH A CAP MARKED "3959" (N:459729.9 E:753405.2) SET IN A WEST LINE OF THE SAID RIGHT-OF-WAY CORRIDOR, BEARS SOUTH 66°12'36" WEST, A DISTANCE OF 54.52 FEET;

THENCE SOUTH 46°57'02" EAST, A DISTANCE OF 51.28 FEET TO A 1/2 INCH IRON ROD WITH A CAP MARKED "3959" SET (STA 23+65.14 N:459716.9 E:753492.6) HEREOF, FROM WHICH A 1/2 INCH IRON ROD WITH A CAP MARKED "3959" (N:459727.2 E:753496.3) SET IN AN EAST LINE OF THE SAID RIGHT-OF-WAY CORRIDOR, BEARS NORTH 19°52'02" EAST, A DISTANCE OF 10.93 FEET, AND A 1/2 INCH IRON ROD WITH A CAP MARKED "3959" (N:459685.7 E:753474.6) SET IN A WEST LINE OF THE SAID RIGHT-OF-WAY CORRIDOR, BEARS SOUTH 19°19'57" WEST, A DISTANCE OF 54.32 FEET;

THENCE NORTH 86°14'33" EAST, A DISTANCE OF 237.95 FEET TO A 1/2 INCH IRON ROD WITH A CAP MARKED "3959" SET (STA 26+03.09 N:459732.5 E:753730.1) HEREOF, FROM WHICH A 1/2 INCH IRON ROD WITH A CAP MARKED "3959" (N:459742.9 E:753734.3) SET IN THE EAST LINE OF THE SAID RIGHT-OF-WAY CORRIDOR, BEARS NORTH 22°38'14" EAST, A DISTANCE OF 11.23 FEET, AND A 1/2 INCH IRON ROD WITH A CAP MARKED "3959" (N:459680.7 E:753708.9) SET IN THE WEST LINE OF THE SAID RIGHT-OF-WAY CORRIDOR, BEARS SOUTH 22°16'21" WEST, A DISTANCE OF 55.97 FEET;

THENCE SOUTH 40°30'17" EAST, A DISTANCE OF 1655.65 FEET TO A 1/2 INCH IRON ROD WITH A CAP MARKED "3959" SET (STA 42+58.74 N:458473.7 E:754805.4) HEREOF, FROM WHICH A 1/2 INCH IRON ROD WITH A CAP MARKED "3959" (N:458477.3 E:754815.6) SET IN AN EAST LINE OF THE SAID RIGHT-OF-WAY CORRIDOR, BEARS NORTH 70°20'24" EAST, A DISTANCE OF 10.77 FEET, AND A 1/2 INCH IRON ROD WITH A CAP MARKED "3959" (N:458456.1 E:754755.0) SET IN A WEST LINE OF THE SAID RIGHT-OF-WAY CORRIDOR, BEARS SOUTH 70°48'42" WEST, A DISTANCE OF 53.42 FEET;

THENCE SOUTH 01°23'39" WEST, A DISTANCE OF 1385.14 FEET TO A 1/2 INCH IRON ROD WITH A CAP MARKED "3959" SET (STA 56+43.88 N:457088.9 E:754771.7), FOR THE END OF THIS LINE AND TO A "TEE" ON LINE B, FROM WHICH 2 INCH IRON PIPE WITH BRASS CAP MARKED "S35, S36, T-23-S, R-32-E, S2, S1, T-24-S" FOUND, FOR THE COMMON CORNER OF SAID SECTION 35, SECTION 36, OF THE SAID T-23-S, R-32-E, AND SECTIONS 1 AND 2, T-24, R-32-E, BEARS SOUTH 81°23'35" EAST, A DISTANCE OF 1888.99 FEET, A 1 INCH IRON PIPE WITH BRASS CAP MARKED "S35, S2 1/4 CORNER" FOUND, BEARS SOUTH 68°10'45" WEST, A DISTANCE OF 835.41 FEET, A 1/2 INCH IRON ROD WITH A CAP MARKED "3959" (N:457140.7 E:754783.0) SET IN AN EAST LINE OF THE SAID RIGHT-OF-WAY CORRIDOR, BEARS NORTH 12°17'56" EAST, A DISTANCE OF 52.97 FEET, AND A 1/2 INCH IRON ROD WITH A CAP MARKED "3959" (N:457137.7 E:754723.1) SET IN A WEST LINE OF THE SAID RIGHT-OF-WAY CORRIDOR, BEARS NORTH 44°57'47" WEST, A DISTANCE OF 68.86 FEET;

SAID CENTERLINE CONTAINS 5643.88 FEET, 342.05 RODS, MORE OR LESS.

## LINE B

BEGINNING AT A 1/2 INCH IRON ROD WITH A CAP MARKED "3959" SET (STA 0+00 N:457082.9 E:754649.1, LAT:32.2547116 LON:-103.6432977) ON THE EAST SIDE OF THE ENERGEN #35-2 WELL PAD, FROM WHICH A 2 INCH IRON PIPE WITH BRASS CAP MARKED "S35, S36, T-23-S, R-32-E, S2, S1, T-24-S" FOUND, FOR THE COMMON CORNER OF SAID SECTION 35, SECTION 36, OF THE SAID T-23-S, R-32-E, AND SECTIONS 1 AND 2, T-24, R-32-E, BEARS SOUTH 82°05'13" EAST, A DISTANCE OF 2009.48 FEET, A 1 INCH IRON PIPE WITH BRASS CAP MARKED "S35, S2 1/4 CORNER" FOUND, BEARS SOUTH 64°59'57" WEST, A DISTANCE OF 720.43 FEET, AND A STAKE SET FOR THE SAID #35-2 WELL LOCATION, BEARS SOUTH 68°13'18" WEST, A DISTANCE OF 270.14 FEET;

THENCE NORTH 87°10'27" EAST, A DISTANCE OF 122.78 FEET TO A 1/2 INCH IRON ROD WITH A CAP MARKED "3959" SET (STA 1+22.78 N:457088.9 E:754771.7, LAT:32.2547261 LON:-103.6429009) AT A "TEE" AT THE END OF LINE A, FROM WHICH A 1/2 INCH IRON ROD WITH A CAP MARKED "3959" (N:457140.7 E:754783.0) SET IN AN EAST LINE OF THE RIGHT-OF-WAY CORRIDOR, BEARS NORTH 12°17'56" EAST, A DISTANCE OF 52.97 FEET, AND A 1/2 INCH IRON ROD WITH A CAP MARKED "3959" (N:457137.7 E:754723.1) SET IN A WEST LINE OF THE SAID RIGHT-OF-WAY CORRIDOR, BEARS NORTH 44°57'47" WEST, A DISTANCE OF 68.86 FEET;

THENCE NORTH 87°08'32" EAST, A DISTANCE OF 1217.51 FEET TO A 1/2 INCH IRON ROD WITH A CAP MARKED "3959" SET (STA 13+40.27 N:457149.6 E:755987.7 LAT:32.2548714 LON:-103.6389664), ON THE WEST SIDE OF THE ENERGEN #35-1 AND #35-3 WELL PAD, FOR THE END OF THIS LINE, FROM WHICH 2 INCH IRON PIPE WITH BRASS CAP MARKED "S35, S36, T-23-S, R-32-E, S2, S1, T-24-S", BEARS SOUTH 62°12'55" EAST, A DISTANCE OF 736.67 FEET, A 1 INCH IRON PIPE WITH BRASS CAP MARKED "S35, S36 1/4 CORNER" FOUND, BEARS NORTH 15°24'13" EAST, A DISTANCE OF 2384.06 FEET, A STAKE SET FOR THE SAID #35-3 WELL LOCATION BEARS SOUTH 59°28'50" EAST, A DISTANCE OF 290.65 FEET;

SAID CENTERLINE CONTAINS 1340.27 FEET, 81.23 RODS, MORE OR LESS.

## LINE C

BEGINNING AT A POINT (STA 0+00 N:461178.9 E:755704.0 LAT:32.2659517 LON:-103.6397998) ON THE NORTH LINE OF THE RED RUGBY SWD WELL PAD, IN THE SAID SECTION 35, FROM WHICH A 2 INCH IRON PIPE WITH BRASS CAP MARKED "S26, S25, S35, S34, T-23-S, R-32-E" FOUND FOR THE COMMON CORNER OF THE SAID SECTION 35, AND SECTIONS 26, 25, AND 36, OF THE SAID T23S R32E, BEARS NORTH 44°40'24" EAST, A DISTANCE OF 1277.57 FEET, A 1 INCH IRON PIPE WITH BRASS CAP MARKED "S35, S36 1/4 CORNER" FOUND ON THE COMMON LINE OF THE SAID SECTIONS 35 AND 36 BEARS SOUTH 27°55'33" EAST, A DISTANCE OF 1958.99 FEET, AND A STAKE SET FOR THE RED RUGBY SWD WELL LOCATION BEARS SOUTH 20°55'55" EAST, A DISTANCE OF 214.13 FEET;

THENCE NORTH 00°00'00" WEST, A DISTANCE OF 122.36 FEET TO AN ANGLE POINT (STA 1+22.36 N:461301.3 E:755704.0) HEREOF;

THENCE SOUTH 87°45'45" WEST, A DISTANCE OF 1027.04 FEET TO AN ANGLE POINT (STA 11+49.40 N:461261.2 E:754677.8) HEREOF;

THENCE SOUTH 84°42'16" WEST, A DISTANCE OF 223.02 FEET TO AN ANGLE POINT (STA 13+72.42 N:461240.6 E:754455.7) HEREOF;

THENCE NORTH 88°42'40" WEST, A DISTANCE OF 214.66 FEET TO AN ANGLE POINT (STA 15+87.08 N:461245.4 E:754241.1) HEREOF;

THENCE SOUTH 88°58'00" WEST, A DISTANCE OF 798.52 FEET TO A POINT (STA 23+85.60 N:461231.0 E:753442.7 LAT:32.2661349 LON:-103.6471142) IN THE EAST RIGHT-OF-WAY LINE OF A 60 FOOT CORRIDOR, FOR THE END OF THIS LINE, FROM WHICH A POINT IN THE EAST RIGHT-OF-WAY LINE, BEARS NORTH 89°31'29" EAST, A DISTANCE OF 10.16 FEET, A POINT IN THE WEST RIGHT-OF-WAY LINE, BEARS SOUTH 89°31'55" EAST, A DISTANCE OF 19.95 FEET, AND A 2 INCH IRON PIPE WITH BRASS CAP MARKED "S27, S26, S35, S34, T-23-S, R-32-E" FOUND FOR THE COMMON CORNER OF THE SAID SECTIONS 35 AND 26, AND SECTIONS 27 AND 34, OF THE SAID BLOCK T23S, BEARS NORTH 69°14'44" WEST, A DISTANCE OF 2267.44 FEET.

SAID CENTERLINE CONTAINS 2385.60 FEET, 144.58 RODS, MORE OR LESS.

NOTES:  
1. COORDINATES AND BEARINGS ARE BASED ON LAMBERT CONICAL PROJECTION OF THE STATE PLANE COORDINATE SYSTEM NAD 83, GRS 80, TEXAS CENTRAL ZONE WITH A CONVERGENCE ANGLE OF 0.37067509 AND DISTANCES ARE OF GRID VALUE WITH A CENTRAL CONVERSION SCALE FACTOR OF 0.99978903. THE POSITIONAL TOLERANCE OF THIS SURVEY EXCEEDS THE REQUIREMENTS FOR A EASEMENT SURVEY.  
2. THIS SURVEY WAS PERFORMED WITHOUT THE BENEFIT OF A TITLE REPORT AND REVIEW OF THE ABSTRACT OF TITLE. THERE MAY BE EASEMENTS AND/OR COVENANTS AFFECTING THIS PROPERTY NOT SHOWN HEREON. LOCATION OF IMPROVEMENTS AND/OR EASEMENTS WERE BEYOND COMMISSIONED SCOPE OF THIS PROJECT AND HAVE BEEN SPECIFICALLY OMITTED. VESTING DOCUMENTS NOT FURNISHED FOR THIS SURVEY.  
3. SEE DOCUMENTS AND ELECTRONIC DATA FILED IN THE OFFICE OF WPG INC FOR COMPLETE RECONSTRUCTION OF THESE SECTIONS OR BLOCKS.

FILE:71/PROJECTS/NEW MEXICO/LEA/T23S R32E.DWG WPG 13-1155-00 AND 13-1156-00

**Watson**  
Professional  
Group Inc



P.O. DRAWER 11186  
MIDLAND, TEXAS  
79702  
(432) 520-9200  
FAX (432) 520-9212  
wdwatson@wpg-us.com

CONSULTING ENGINEERS, LAND SURVEYORS & PLANNERS



Basis of Bearing is SPC NAD 83 NEW MEXICO EAST

PROPOSED ELECTRIC LINE IN CORRIDOR

**ENERGEN RESOURCES CORPORATION**

COX 35 FEDERAL LEASE

A PROPOSED ELECTRIC LINE IN SECTION 35  
T-23-S, R-32-E  
LEA COUNTY, NEW MEXICO.

I, THE UNDERSIGNED, DO HEREBY CERTIFY THAT THE FOREGOING DESCRIPTION AND PLAT HERETO IS A REPRESENTATION OF A SURVEY COMPLETED ON THE GROUND UNDER MY SUPERVISION AND IS TRUE AND CORRECT TO THE BEST OF MY KNOWLEDGE AND BELIEF.

W.D. Watson, Jr. NEW MEXICO P.L.S 3959

5/9/14  
DATE