

DISTRICT I
1626 N. French Dr., Hobbs, NM 88240
DISTRICT II
611 South First, Artesia, NM 88210
DISTRICT III
1000 Rio Brazos Rd., Artesia, NM 87410
DISTRICT IV
2040 South Pacheco, Santa Fe, NM 87505

State of New Mexico
Energy, Minerals and Natural Resources Department

Form C-102
Revised August 1, 2011

Submit one copy to Appropriate
District Office

OIL CONSERVATION DIVISION
1220 South St. Francis Dr.
Santa Fe, New Mexico 87505

☐ AMENDED REPORT

WELL LOCATION AND ACREAGE DEDICATION PLAT

API Number 30-025-43289	Pool Code - 96603	Pool Name Triste Draw; Bone Spring K2
Property Code 40257	Property Name COX FEDERAL 35	Well Number 3H
OGED No. 162928	Operator Name EMERGEN RESOURCES CORPORATION	Elevation 3649.0

RECEIVED

Surface Location

UL or lot No.	Section	Township	Range	Lot Idn	Feet from the	North/South line	Feet from the	East/West line	County
P	35	23-S	32-E		200	South	450	East	LEA

Bottom Hole Location If Different From Surface

UL or lot No.	Section	Township	Range	Lot Idn	Feet from the	North/South line	Feet from the	East/West line	County
A	35	23-S	32-E		330	North	400	East	LEA
Dedicated Acres 160	Joint or Infill	Consolidation Code	Order No.						

NO ALLOWABLE WILL BE ASSIGNED TO THIS COMPLETION UNTIL ALL INTERESTS HAVE BEEN CONSOLIDATED
OR A NON-STANDARD UNIT HAS BEEN APPROVED BY THE DIVISION

COX FEDERAL 35-3H
N: 457001.5
E: 756188.1
LAT: 32°15'18.058"
LONG: 103°38'17.956"
DATUM (NAD 1983)

SECTION 35
T-23-S, R-32-E

BOTTOM HOLE LOCATION
N: 461753.3
E: 756204.6
LAT: 32°16'03.077"
LONG: 103°38'17.408"
DATUM (NAD 1983)

OPERATOR CERTIFICATION

I hereby certify that the information contained herein is true and complete to the best of my knowledge and belief, and that this organization either owns a working interest or unleased mineral interest in the land including the proposed bottom hole location or has a right to drill this well at this location pursuant to a contract with an owner of such a mineral or working interest, or to a voluntary pooling agreement or compulsory pooling order heretofore entered by the division.

Kate Byle - 7/25/14

Signature _____ Date _____

Printed Name **KATE BYLE**

Date **7/25/14**

SURVEYOR CERTIFICATION

I hereby certify that the well location shown on this plat was determined from field notes of actual survey and that the same is true and correct.

WILSON D. WATSON JR.

3 **REGISTERED PROFESSIONAL SURVEYOR**

14 STATE OF NEW MEXICO

Date Surveyed **NOV. 3959**

Signature & Seal of Professional Surveyor **WILSON D. WATSON JR.**

Certificate No. **WILSON D. WATSON JR. P.L.S. #3959**

WATSON PROFESSIONAL GROUP INC

NOTES:

1. COORDINATES AND BEARINGS ARE BASED ON LAMBERT CONICAL PROJECTION OF THE STATE PLANE COORDINATE SYSTEM NAD 83, CORRS 96, TEXAS CENTRAL ZONE WITH A CONVERGENCE ANGLE OF 0.37087599 AND DISTANCES ARE OF GRID VALUE WITH A CENTRAL COMBINED SCALE FACTOR OF 0.99978903. THE POSITIONAL TOLERANCE OF THIS SURVEY EXCEEDS THE REQUIREMENTS FOR A CONSTRUCTION SURVEY.

2. SCALE 1" = 2000'

SKETCH PLAT

COX-FEDERAL 35-3H
LAT: 32°15'16.058"
LON: 103°38'17.956"

ENERGEN RESOURCES CORPORATION

COX-FEDERAL 35-3H

200 FSL & 450 FEL

SECTION 35

T-23-S, R-32-E

LEA COUNTY, NEW MEXICO

FINISHED PAD ELEVATION; (3649.5') ACTUAL 3649.03'

GROUND ELEVATION (3649.5) NAVD 88

LEGEND



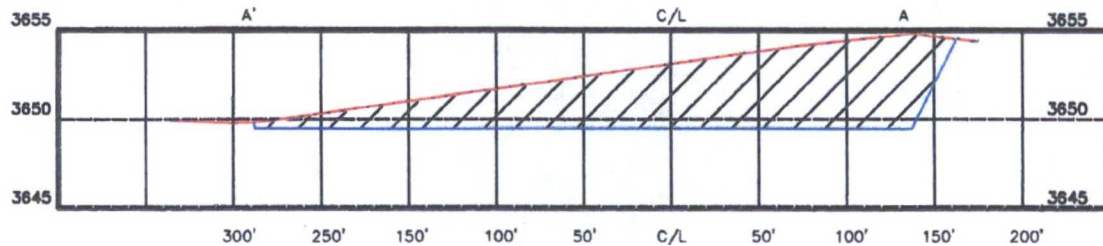
FILL



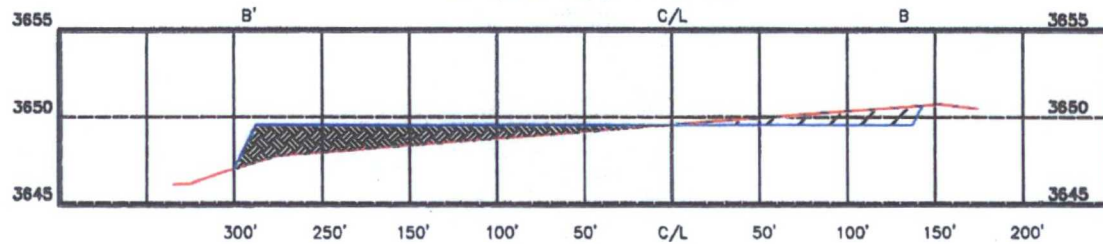
CUT

— EXISTING GRADE
— FINISHED GRADE

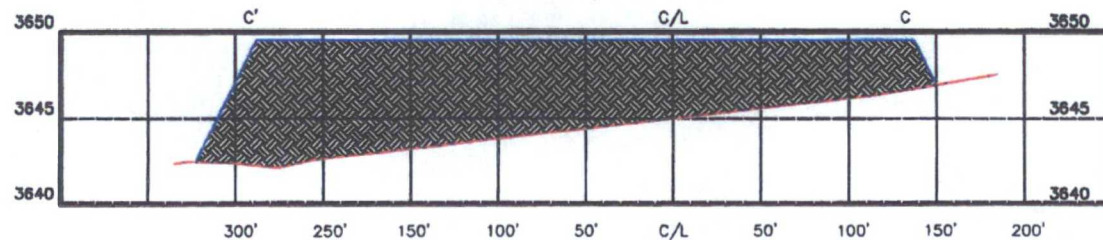
"A" (NORTH) PROFILE



"B" (CENTER) PROFILE



"C" (SOUTH) PROFILE



THIS DIAGRAM IS AN ESTIMATE
OF DIRT BALANCE AND IS NOT
INTENDED TO BE AN EXACT
MEASURE OF VOLUME



0 500' 1000'

10/14-1072-00

FILE/T/PROJECTS/NEW MEXICO/LEA/1235 R32E.DWG

PRE-CONSTRUCTION AS SURVEYED IN 2013 REVISED DATE 3/14/14

Basis of Bearing is SPC NAD 83 NEW MEXICO EAST



CONSULTING ENGINEERS, LAND SURVEYORS & PLANNERS

P.O. DRAWER 11166
MIDLAND, TEXAS 79702
PHONE: 432-620-8000
FAX: 432-620-8012

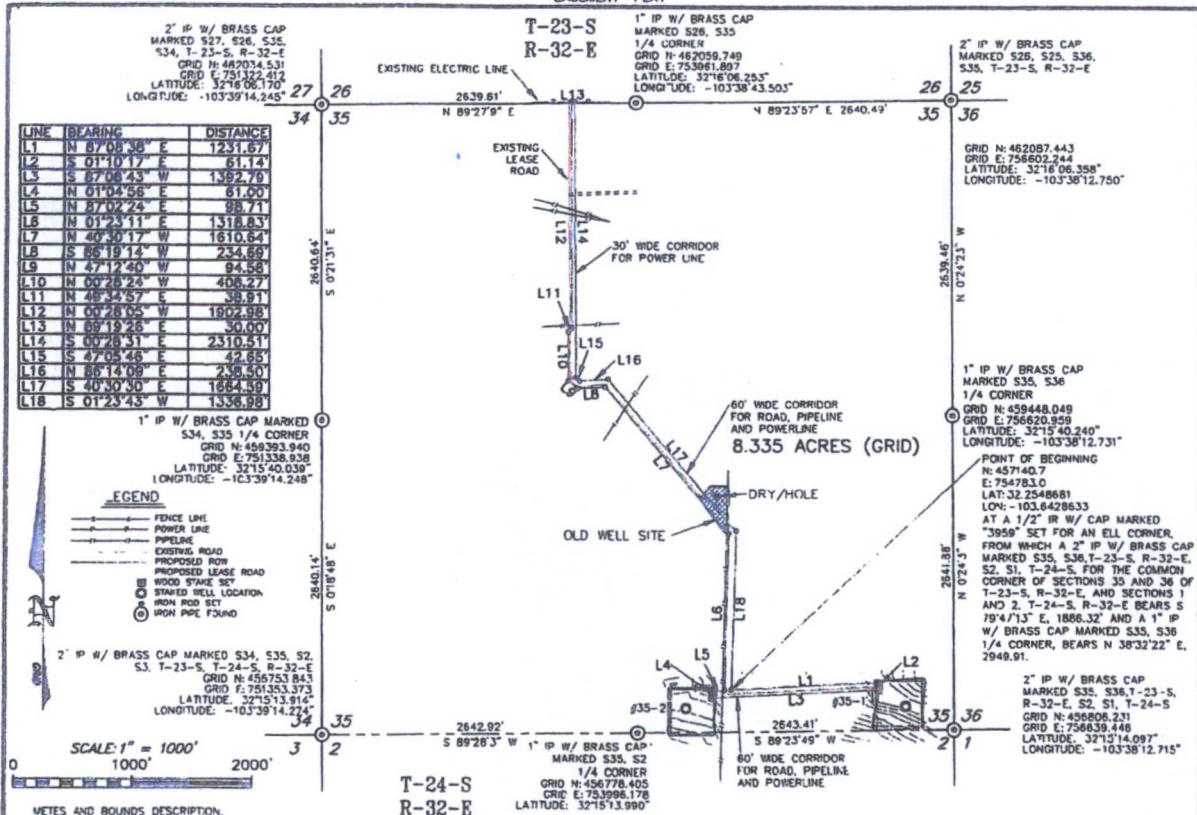
LOCATION PAD PROFILES

ENERGEN RESOURCES CORPORATION

COX FEDERAL 35-1H & 35-3H

Location Pad Calculations
T-23-S, R-32-E
LEA COUNTY, NEW MEXICO.

EASEMENT PLAT



METES AND BOUNDS DESCRIPTION.

BEING A 8.335 ACRE, MORE OR LESS, TRACT OF LAND LYING IN AND BEING PART OF SECTIONS 35 AND 26, T-23-S, R-32-E, LEA COUNTY, NEW MEXICO, AND BEING MORE PARTICULARLY DESCRIBED AS FOLLOWS:

BEGINNING AT A 1/2 INCH IRON ROD SET WITH A CAP MARKED "3959" (N457140.7 E754783.0) FOR AN ELL CORNER, FROM WHICH A FOUND 2 INCH IRON PIPE WITH A BRASS CAP MARKED "S35, S36, T-23-S, R-32-E, S2, S1, T-24-S, R-32-E, AND SECTIONS 1 AND 2, T-24-S, R-32-E, BEARS SOUTH 79°47'13" EAST, A DISTANCE OF 1886.32 FEET, AND A FOUND 1 INCH IRON PIPE WITH BRASS CAP MARKED "S35, S36 1/4 CORNER", BEARS NORTH 38°32'22" EAST, A DISTANCE OF 2949.91 FEET;

THENCE NORTH 87°08'38" EAST, A DISTANCE OF 1231.67 FEET TO WOOD STAKE SET (N457202.1 E756013.2), FROM WHICH A STAKE SET FOR THE ENEERGEN #35-1 WELL LOCATION, BEARS SOUTH 48°2'16" EAST, A DISTANCE OF 301.02 FEET, FOR A SOUTHEAST CORNER HEREOF;

THENCE NORTH 01°10'17" EAST, A DISTANCE OF 61.14 FEET TO A WOOD STAKE SET (N457140.9 E756014.4), FROM WHICH A STAKE SET FOR THE SAID ENEERGEN #35-1 WELL LOCATION, BEARS SOUTH 58°09'40" EAST, A DISTANCE OF 263.31 FEET, FOR A SOUTHEAST CORNER HEREOF;

THENCE SOUTH 87°08'43" WEST, A DISTANCE OF 1392.79 FEET TO A WOOD STAKE SET (N457071.6 E754023.3), FROM WHICH A STAKE SET FOR THE ENEERGEN #35-2 WELL LOCATION, BEARS SOUTH 88°26'45" WEST, A DISTANCE OF 242.02 FEET, FOR A SOUTHWEST CORNER HEREOF;

THENCE NORTH 01°04'56" EAST, A DISTANCE OF 81.00 FEET TO A WOOD STAKE SET (N457132.6 E754824.5), FROM WHICH A STAKE SET FOR THE SAID ENEERGEN #35-2 WELL LOCATION, BEARS SOUTH 86°19'18" WEST, A DISTANCE OF 270.42 FEET, FOR A SOUTHWEST CORNER HEREOF;

THENCE NORTH 87°02'24" EAST, A DISTANCE OF 98.71 FEET TO A 1/2 INCH IRON ROD SET WITH A CAP MARKED "3959" (N457137.7 E754723.1), FROM WHICH A 1 INCH IRON PIPE WITH BRASS CAP MARKED "S35, S2 1/4 CORNER", BEARS SOUTH 63°47'16" WEST, A DISTANCE OF 809.91 FEET, FOR AN ELL CORNER HEREOF;

THENCE NORTH 01°23'11" EAST, A DISTANCE OF 1318.83 FEET TO A 1/2 INCH IRON ROD SET WITH A CAP MARKED "3956" (N458456.7 E754755.0), FROM WHICH A 1 INCH IRON PIPE WITH BRASS CAP MARKED "S34, S35 1/4 CORNER", BEARS NORTH 74°38'53" WEST, A DISTANCE OF 3542.44 FEET, FOR A CORNER HEREOF;

THENCE NORTH 40°30'30" WEST, A DISTANCE OF 1610.84 FEET TO A 1/2 INCH IRON ROD SET WITH A CAP MARKED "3959" (N459680.7 E753708.9), FROM WHICH THE SAID 1 INCH IRON PIPE WITH BRASS CAP MARKED "S34, S35 1/4 CORNER", BEARS SOUTH 83°05'59" WEST, A DISTANCE OF 2387.20 FEET, FOR A CORNER HEREOF;

THENCE SOUTH 86°19'14" WEST, A DISTANCE OF 234.69 FEET TO A 1/2 INCH IRON ROD SET WITH A CAP MARKED "3959" (N459865.7 E753474.6), FROM WHICH THE SAID 1 INCH IRON PIPE WITH BRASS CAP MARKED "S34, S35 1/4 CORNER", BEARS SOUTH 87°44'55" WEST, A DISTANCE OF 2152.92 FEET, FOR A CORNER HEREOF;

THENCE NORTH 47°12'40" WEST, A DISTANCE OF 84.58 FEET TO A 1/2 INCH IRON ROD SET WITH A CAP MARKED "3959" (N459729.9 E753475.2), FROM WHICH THE SAID 1 INCH IRON PIPE WITH BRASS CAP MARKED "S34, S35 1/4 CORNER", BEARS SOUTH 86°45'51" WEST, A DISTANCE OF 2093.43 FEET, FOR A CORNER HEREOF;

THENCE NORTH 00°28'24" WEST, A DISTANCE OF 408.27 FEET TO A 1/2 INCH IRON ROD SET WITH A CAP MARKED "3959" (N460139.2 E753401.9), FROM WHICH THE SAID 1 INCH IRON PIPE WITH BRASS CAP MARKED "S34, S35 1/4 CORNER", BEARS SOUTH 70°09'42" WEST, A DISTANCE OF 2193.07 FEET, FOR A CORNER HEREOF;

THENCE NORTH 49°34'57" EAST, A DISTANCE OF 38.81 FEET TO A 1/2 INCH IRON ROD SET WITH A CAP MARKED "3959" (N460163.4 E753431.5), FROM WHICH THE SAID 1 INCH IRON PIPE WITH BRASS CAP MARKED "S35, S36 1/4 CORNER", BEARS SOUTH 77°21'30" EAST, A DISTANCE OF 3268.72 FEET, FOR A SOUTHEAST CORNER HEREOF;

THENCE NORTH 00°28'05" WEST, AT A DISTANCE OF 1891.18 FEET, PASSING THE COMMON LINE OF THE SAID SECTIONS 35 AND 26, A TOTAL DISTANCE OF 1902.88 FEET TO A 1/2 INCH IRON ROD SET WITH A CAP MARKED "3959" (N462066.3 E753415.9), FROM WHICH A 2 INCH IRON PIPE WITH A BRASS CAP MARKED "S27, S26, S34, T-23-S, R-32-E", FOR THE COMMON CORNER OF SECTIONS 35, 34, 27, AND 26, T-23-S, R-32-E, BEARS SOUTH 89°07'46" WEST, A DISTANCE OF 2093.76 FEET, FOR A CORNER HEREOF;

THENCE NORTH 89°07'46" EAST, A DISTANCE OF 30.00 FEET TO A 1/2 INCH IRON ROD SET WITH A CAP MARKED "3959" (N462066.7 E753445.9), FROM WHICH A 1 INCH IRON PIPE WITH BRASS CAP MARKED "S26, S35 1/4 CORNER", BEARS SOUTH 89°13'45" EAST, A DISTANCE OF 516.01 FEET, FOR A CORNER HEREOF;

THENCE SOUTH 00°28'31" WEST, A DISTANCE OF 11.87 FEET, PASSING THE COMMON LINE OF THE SAID SECTIONS 26 AND 35, A TOTAL DISTANCE OF 2310.51 FEET TO A 1/2 INCH IRON ROD SET WITH A CAP MARKED "3959" (N459756.3 E753465.1), FROM WHICH THE SAID 1 INCH IRON PIPE WITH BRASS CAP MARKED "S35, S36 1/4 CORNER", BEARS SOUTH 84°25'19" EAST, A DISTANCE OF 3170.87 FEET, FOR A CORNER HEREOF;

THENCE SOUTH 47°05'48" EAST, A DISTANCE OF 42.85 FEET TO A 1/2 INCH IRON ROD SET WITH A CAP MARKED "3959" (N459727.2 E753496.3), FROM WHICH THE SAID 1 INCH IRON PIPE WITH BRASS CAP MARKED "S35, S36 1/4 CORNER", BEARS SOUTH 84°55'20" EAST, A DISTANCE OF 3137.21 FEET, FOR A CORNER HEREOF;

THENCE NORTH 86°14'09" EAST, A DISTANCE OF 238.50 FEET TO A 1/2 INCH IRON ROD SET WITH A CAP MARKED "3959" (N459742.9 E753734.3), FROM WHICH THE SAID 1 INCH IRON PIPE WITH BRASS CAP MARKED "S35, S34 1/4 CORNER", BEARS SOUTH 84°10'06" EAST, A DISTANCE OF 2901.85 FEET, FOR A CORNER HEREOF;

THENCE SOUTH 40°30'30" EAST, A DISTANCE OF 1684.59 FEET TO A 1/2 INCH IRON ROD SET WITH A CAP MARKED "3959" (N458477.3 E754815.6), FROM WHICH THE SAID 1 INCH IRON PIPE WITH BRASS CAP MARKED "S35, S36 1/4 CORNER", BEARS NORTH 61°43'58" EAST, A DISTANCE OF 2049.84 FEET, FOR A CORNER HEREOF;

THENCE SOUTH 01°23'43" WEST, A DISTANCE OF 1336.88 FEET TO THE PLACE OF BEGINNING AND CONTAINING 8.335 ACRES, MORE OR LESS.

NOTES:

- COORDINATES AND BEARINGS ARE BASED ON LAMBERT CONICAL PROJECTION OF THE STATE PLANE COORDINATE SYSTEM AND 81. CORPS 84, TEXAS CENTRAL ZONE WITH A CONVERGENCE ANGLE OF 0.0007599 AND DISTANCES ARE OF GRID VALUE WITH A CENTRAL CONVERGENCE SCALE FACTOR OF 0.9997803. THE PROPORTIONAL TOLERANCE OF THIS SURVEY EXCEEDS THE REQUIREMENTS FOR A COASTAL SURVEY.
- THIS SURVEY WAS PERFORMED IN PART FOR THE BENEFIT OF A TITLE REPORT AND REVIEW OF THE ABSTRACT OF TITLE. THERE MAY BE EASEMENTS AND/OR COVENANTS AFFECTING THIS PROPERTY NOT SHOWN HEREON. OPERATION OF EASEMENTS AND/OR COVENANTS WERE BEYOND COMPREHENSION SCOPES OF THIS PROJECT AND HAVE BEEN SPECIFICALLY OBTAINED. METING DOCUMENTS NOT FURNISHED FOR THIS SURVEY.
- SEE DOCUMENTS AND ELECTRONIC DATA FILED IN THE OFFICE OF THE PUBLIC LANDS FOR COMPLETE RECONSTRUCTION OF THESE SECTIONS OR BLOCKS.

FILED/PROJECTS/NEW MEXICO/LEA/35/2013/104 13-1153-00 AND 13-1158-00

Watson
Professional
Group Inc.



P. DRAWER LUGS
MILAN, TEXAS
79702
(432) 520-9200
FAX: (432) 520-9212

CONSULTING ENGINEER, LAND SURVEYORS & PLANNERS



Scale of Bearing is SPC NAD 83 NEW MEXICO EAST

PROPOSED CORRIDOR

ENERGY RESOURCES

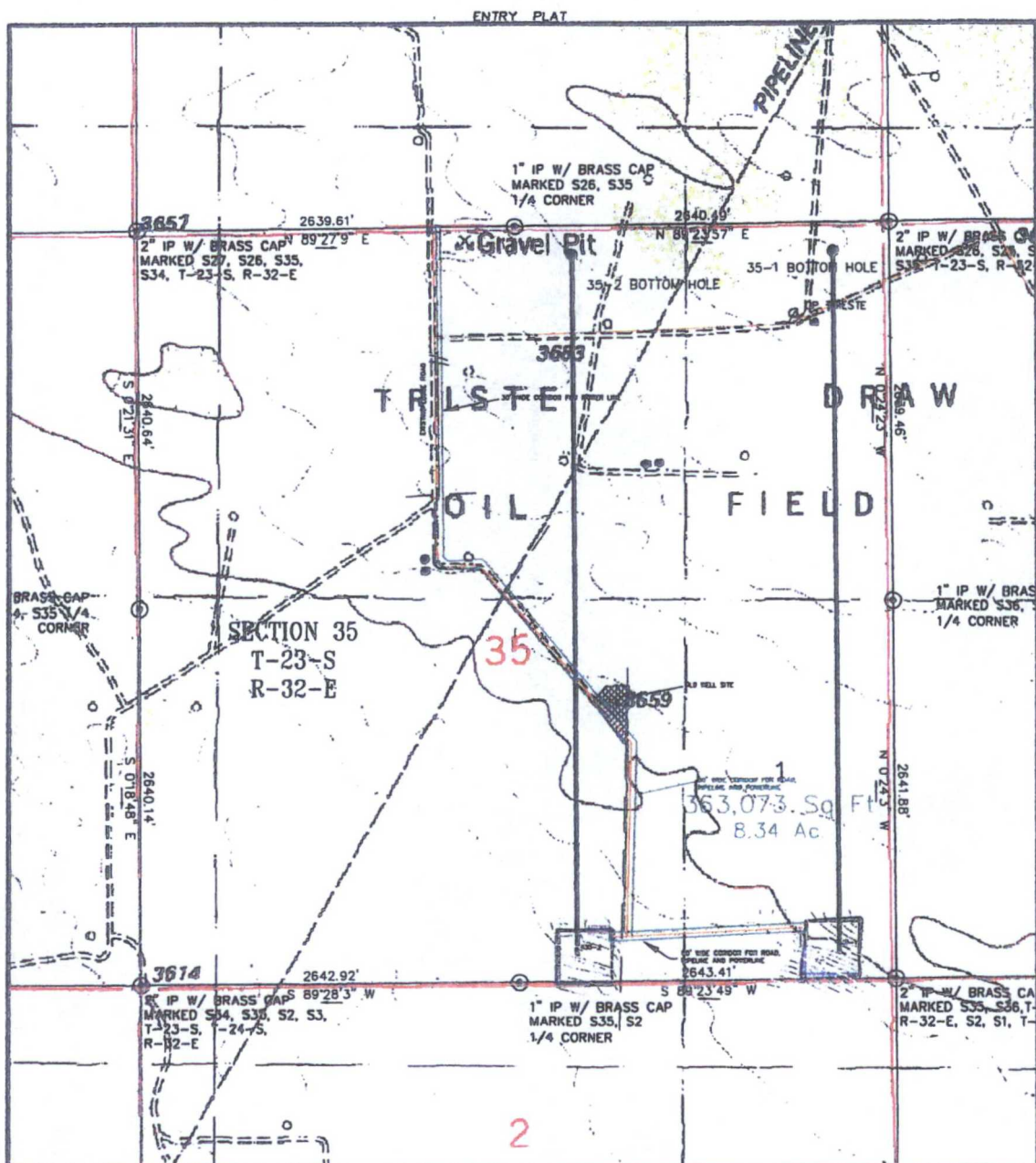
COX FEDERAL LEASE

A PROPOSED POWER CORRIDOR IN SECTIONS 35 & 26
 T-23-S, R-32-E
 LEA COUNTY, NEW MEXICO.

I, THE UNDERSIGNED, DO HEREBY CERTIFY THAT THE FOREGOING DESCRIPTION AND PLAT HEREON IS A CORRECTED VERSION OF A SURVEY COMPLETED BY ME OR UNDER MY SUPERVISION AND IS TRUE AND CORRECT TO THE BEST OF MY KNOWLEDGE AND BELIEF.

W.D. Watson, Jr. NEW MEXICO P.L.S. 3959

5/20/2013
DATE



FILE:T\PROJECTS\NEW MEXICO\LEA\T23S R32E.DWG

Basis of Bearing is SPC NAD 83 NEW MEXICO EAST

Watson
Professional
Group Inc



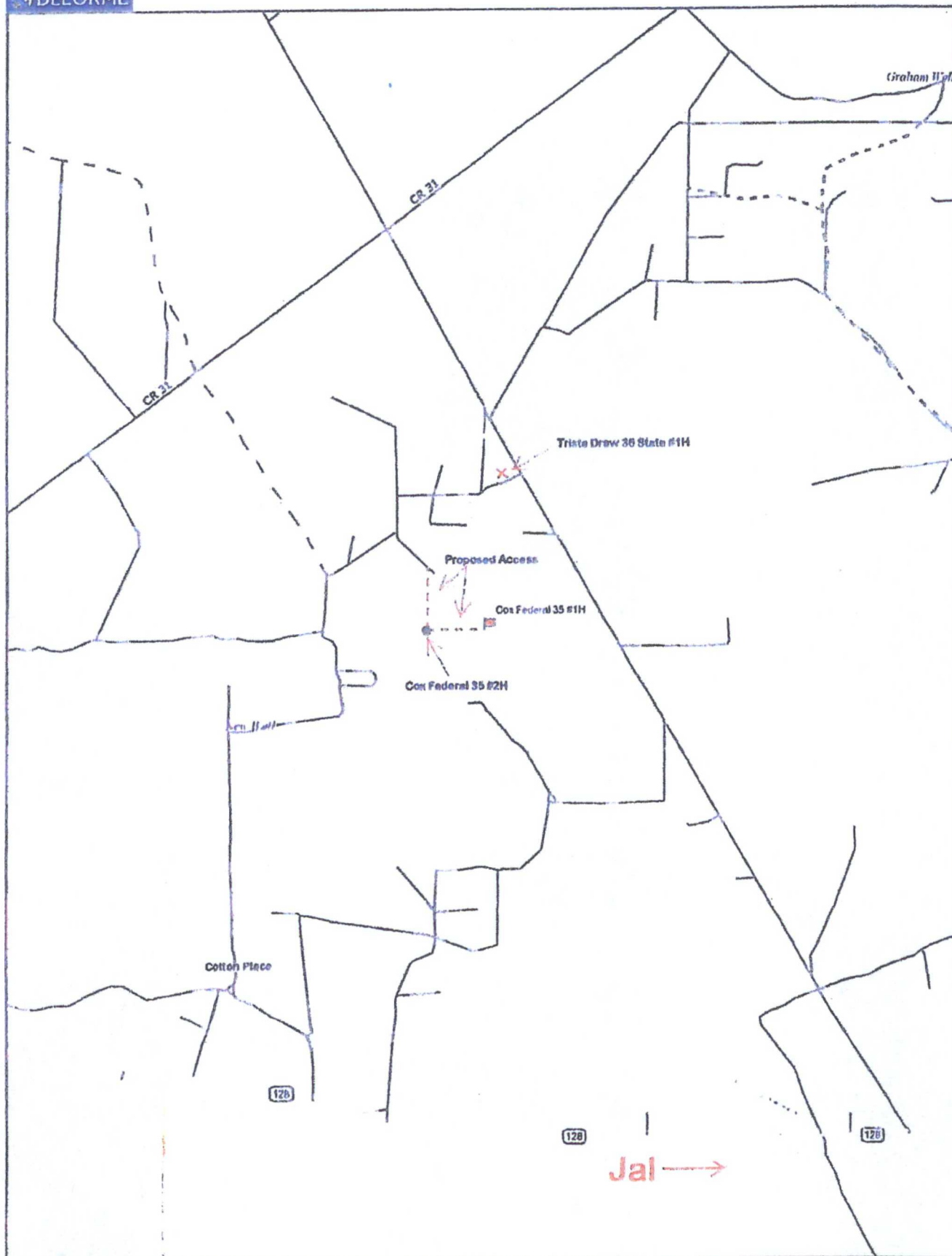
P.O. DRAWER 11186
MIDLAND, TEXAS 79702
(432) 520-9200
FAX (432) 520-9212
www.watson-engineers.com

CONSULTING ENGINEERS, LAND SURVEYORS & PLANNERS

TOPO OF SECTION 35

ENERGEN RESOURCES

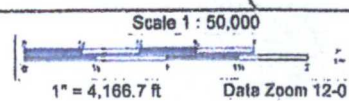
SECTION 35
T-23-S, R-32-E
LEA COUNTY, NEW MEXICO.

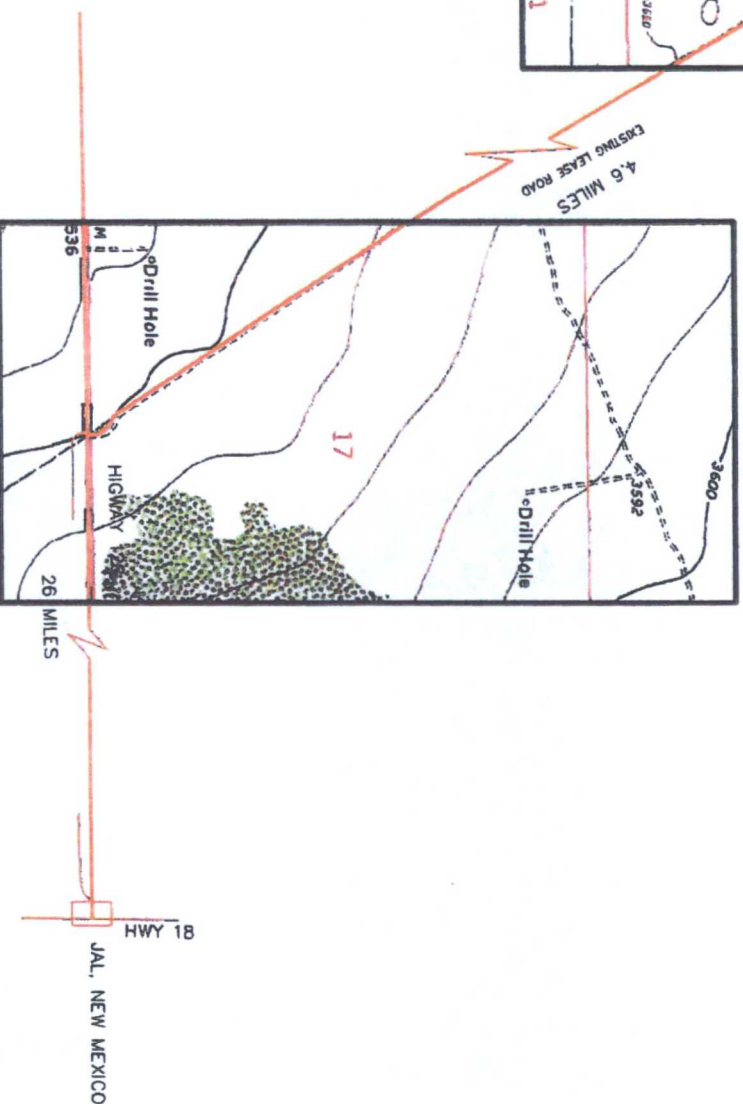
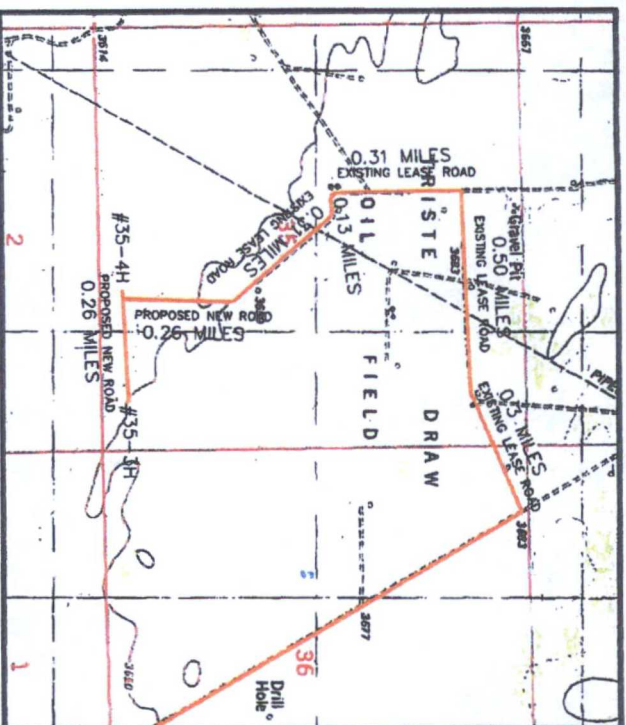


Data use subject to license.

© DeLorme. Topo USA® 8.

www.delorme.com





Basis of Bearing is SPC NAD 83 NEW MEXICO EAST

ROUTE MAP TO COX FEDERAL 35-3H & 35-4H

ENERGEN RESOURCES

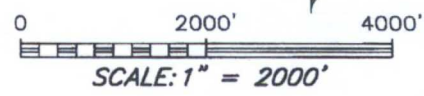
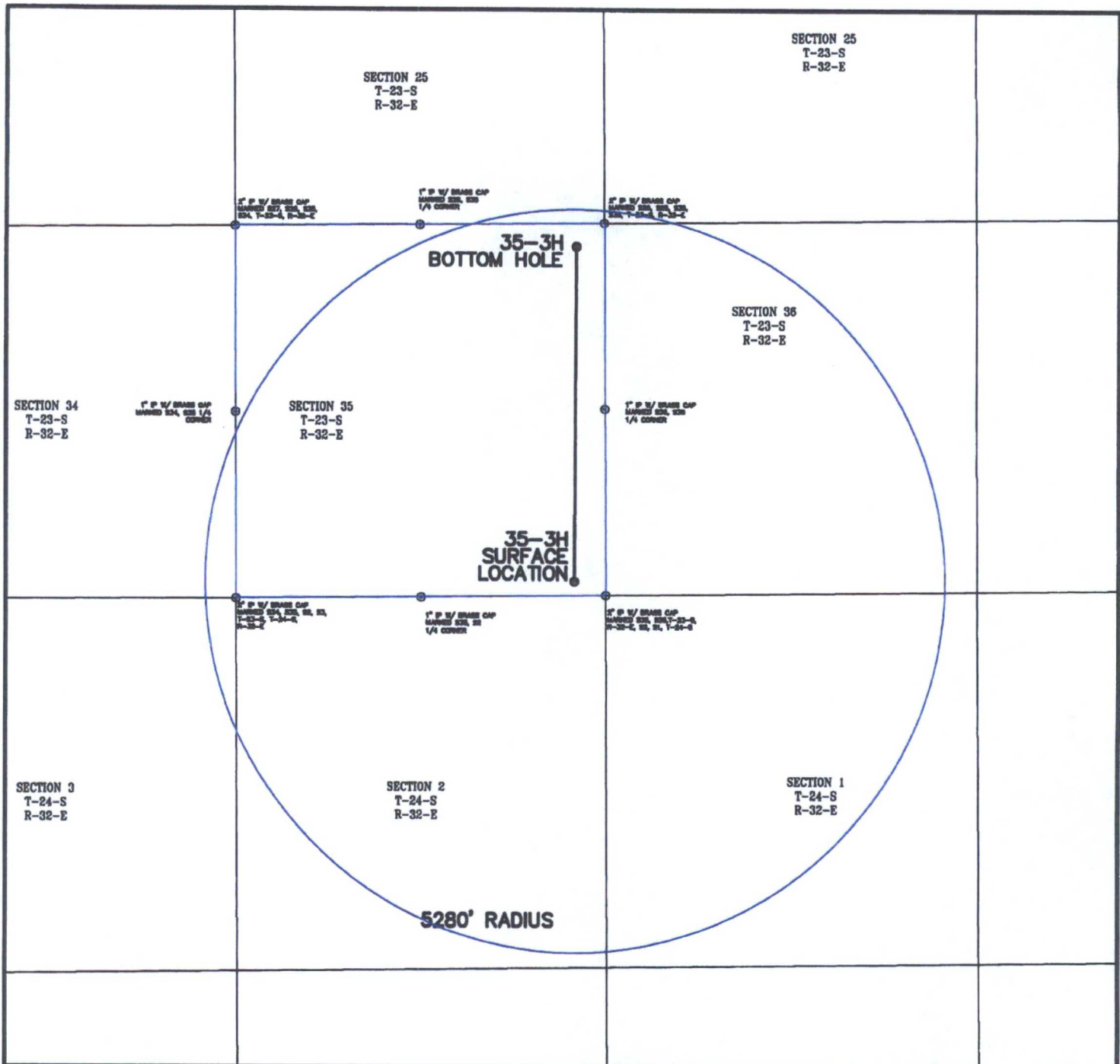
ROUTE MAP OF ROADS FROM HWY 128 TO WELLS
T-23-S, R-32-E
LEA COUNTY, NEW MEXICO.

**Watson
Professional
Group Inc**



P.O. DRAWER 11086
MIDLAND, TEXAS 79702
(432) 520-9220
FAX (432) 520-9212
www.watsoneng.com

CONSULTING ENGINEERS, LAND SURVEYORS & PLANNERS



WO #14-1072-00

Basis of Bearing is SPC NAD 83 NEW MEXICO EAST

COX FEDERAL 35-3H SURFACE

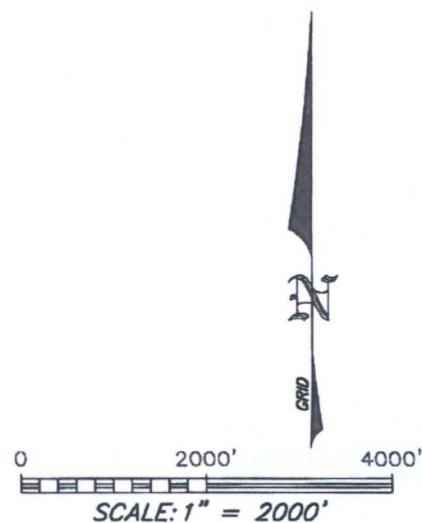
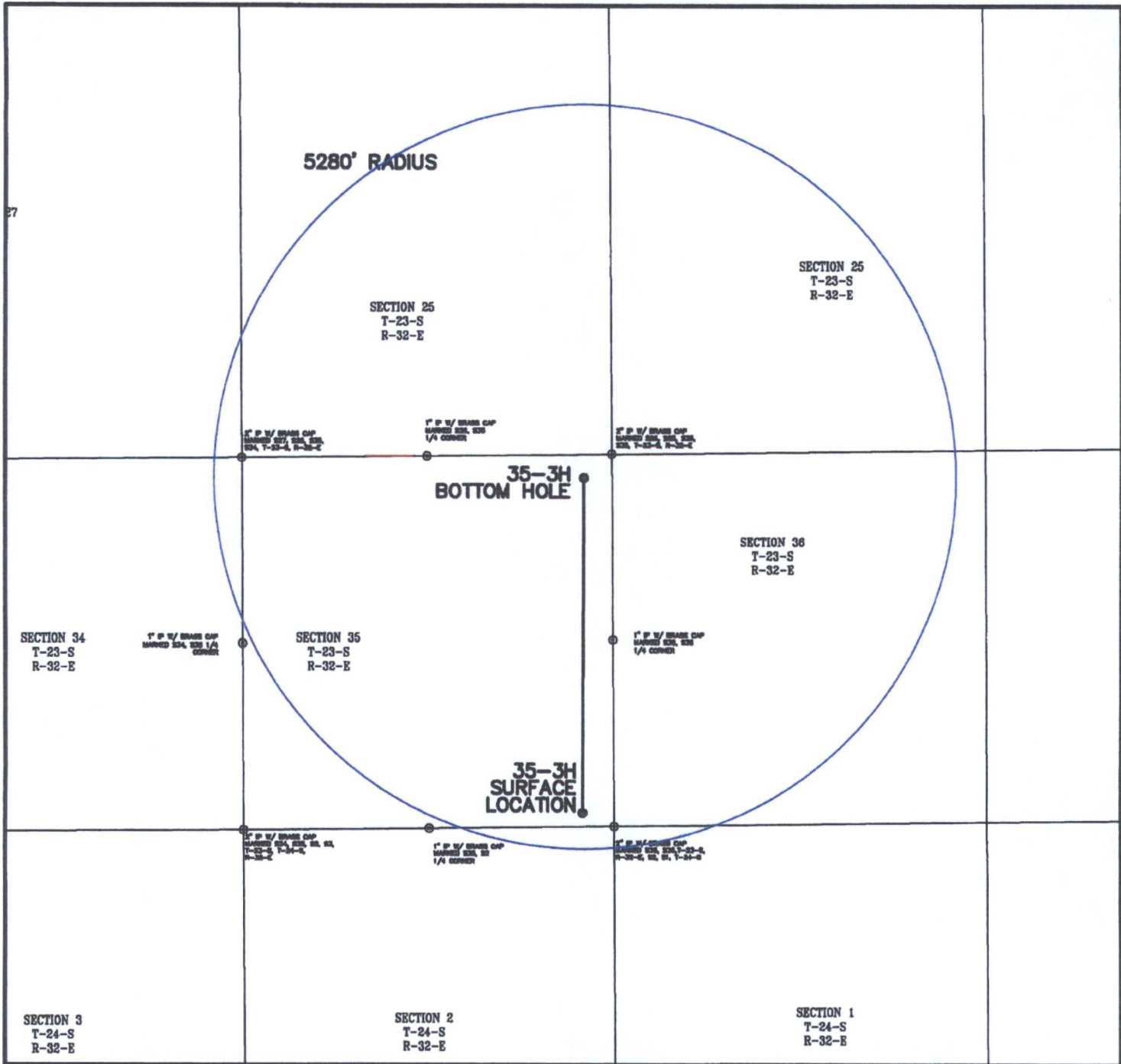
ENERGEN RESOURCES

SECTION 35
T-23-S, R-32-E
LEA COUNTY, NEW MEXICO.



P.O. DRAWER 11186
MIDLAND, TEXAS
79702
(432) 520-9200
FAX (432) 520-9212
wdwatson@wpg-us.com

CONSULTING ENGINEERS, LAND SURVEYORS & PLANNERS



WO #14-1072-00

Basis of Bearing is SPC NAD 83 NEW MEXICO EAST

COX FEDERAL 35-3H BOTTOM HOLE

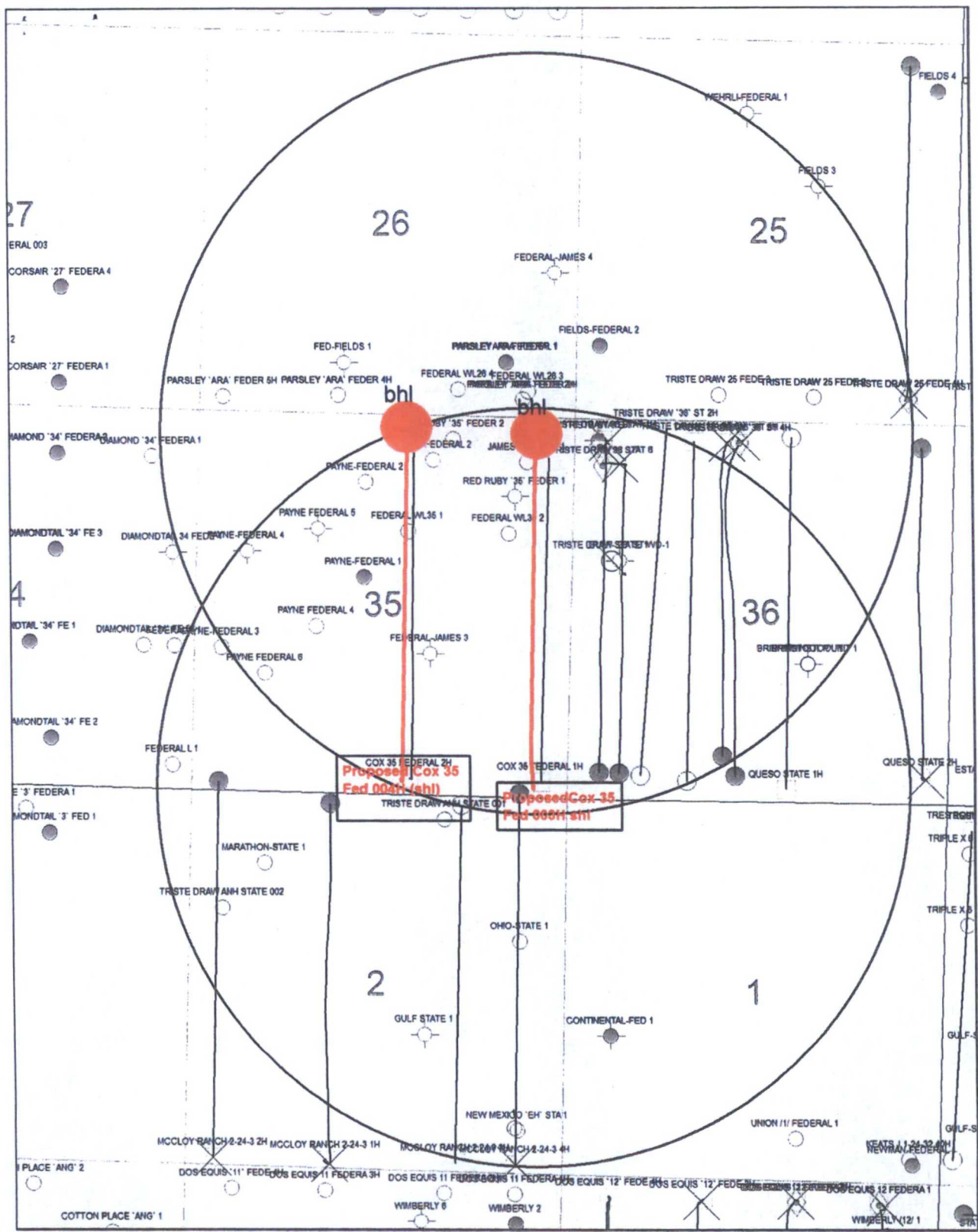
ENERGEN RESOURCES

SECTION 35
T-23-S, R-32-E
LEA COUNTY, NEW MEXICO.



P.O. DRAWER 11186
MIDLAND, TEXAS
79702
(432) 520-9200
FAX (432) 520-9212
wdwatson@wpg-us.com

CONSULTING ENGINEERS, LAND SURVEYORS & PLANNERS



Proposed Well Cox 35 Federal 3H Showing 1-mile radius around SHL and BHL Delaware Basin Lea County, NM		
Print Date: 19 March, 2014	Drawn By:	Scale: <scale>
Document Name: TERRY BURNS COX WELLS.GMP		