

District I  
1625 N French Dr., Hobbs, NM 88240  
Phone: (575) 393-6161 Fax: (575) 393-0720  
District II  
811 S First St., Artesia, NM 88210  
Phone: (575) 748-1283 Fax: (575) 748-9720  
District III  
1000 Rio Brazos Road, Aztec, NM 87410  
Phone: (505) 334-6178 Fax: (505) 334-6170  
District IV  
1220 S St Francis Dr., Santa Fe, NM 87505  
Phone: (505) 476-3460 Fax: (505) 476-3462

State of New Mexico  
Energy, Minerals & Natural Resources Department  
OIL CONSERVATION DIVISION  
1220 South St. Francis Dr.  
Santa Fe, NM 87505

Form C-102  
Revised August 1, 2011  
Submit one copy to appropriate  
District Office

☐ AMENDED REPORT

WELL LOCATION AND ACREAGE DEDICATION PLAT

|   |   |  |
|---|---|--|
| <sup>1</sup> API Number<br>30-025-43297 | <sup>2</sup> Pool Code<br>97955                   | <sup>3</sup> Pool Name<br>WC-025 G-06 5263319P; BS |
| <sup>4</sup> Property Code<br>316331    | <sup>5</sup> Property Name<br>SD WE 24 FED P23    | <sup>6</sup> Well Number<br>3H                     |
| <sup>7</sup> OGRID No.<br>4323          | <sup>8</sup> Operator Name<br>CHEVRON U.S.A. INC. | <sup>9</sup> Elevation<br>3133'                    |

<sup>10</sup> Surface Location

| UL or lot no. | Section | Township | Range             | Lot Idn | Feet from the | North/South line | Feet from the | East/West line | County |
|---------------|---------|----------|-------------------|---------|---------------|------------------|---------------|----------------|--------|
| M             | 24      | 26 SOUTH | 32 EAST, N.M.P.M. |         | 260'          | SOUTH            | 1333'         | WEST           | LEA    |

<sup>11</sup> Bottom Hole Location If Different From Surface

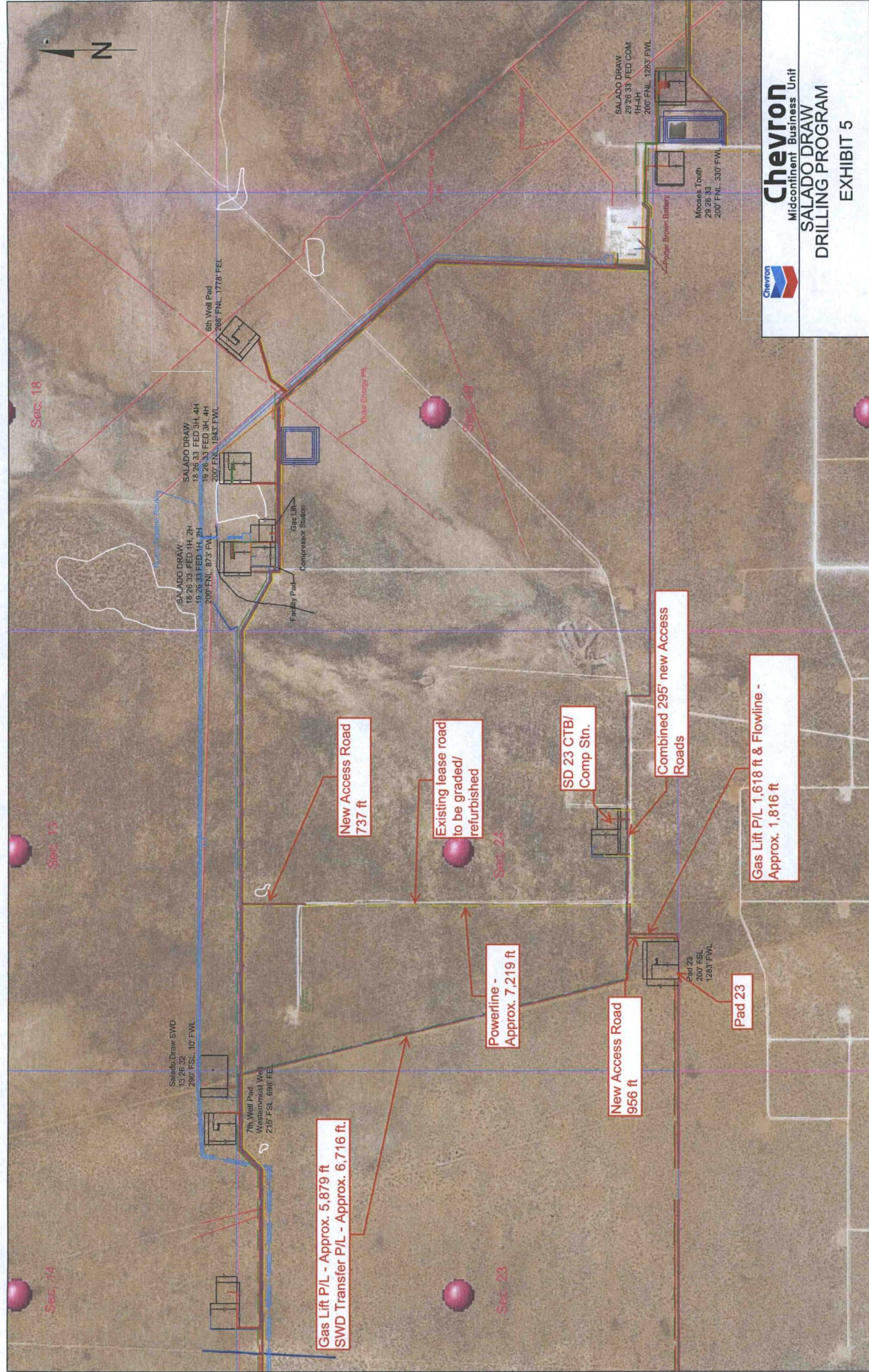
| UL or lot no. | Section | Township | Range             | Lot Idn | Feet from the | North/South line | Feet from the | East/West line | County |
|---------------|---------|----------|-------------------|---------|---------------|------------------|---------------|----------------|--------|
| C             | 13      | 26 SOUTH | 32 EAST, N.M.P.M. |         | 180'          | NORTH            | 1670'         | WEST           | LEA    |

|                                      |                               |                                  |                         |
|--------------------------------------|-------------------------------|----------------------------------|-------------------------|
| <sup>12</sup> Dedicated Acres<br>320 | <sup>13</sup> Joint or Infill | <sup>14</sup> Consolidation Code | <sup>15</sup> Order No. |
|--------------------------------------|-------------------------------|----------------------------------|-------------------------|

No allowable will be assigned to this completion until all interests have been consolidated or a non-standard unit has been approved by the division.

| <p><sup>16</sup></p> <table><tr><th colspan="2">PROPOSED BOTTOM HOLE LOCATION</th></tr><tr><td>X=</td><td>717,561 NAD 27</td></tr><tr><td>Y=</td><td>382,519</td></tr><tr><td>LAT.</td><td>32.049714</td></tr><tr><td>LONG.</td><td>103.631140</td></tr><tr><td>X=</td><td>758,748 NAD83</td></tr><tr><td>Y=</td><td>382,576</td></tr><tr><td>LAT.</td><td>32.049839</td></tr><tr><td>LONG.</td><td>103.631609</td></tr></table><br><table><tr><th colspan="2">SD WE 24 FED P23 3H WELL</th></tr><tr><td>X=</td><td>717,276 NAD 27</td></tr><tr><td>Y=</td><td>372,253</td></tr><tr><td>LAT.</td><td>32.021499</td></tr><tr><td>LONG.</td><td>103.632277</td></tr><tr><td>X=</td><td>758,463 NAD83</td></tr><tr><td>Y=</td><td>372,310</td></tr><tr><td>LAT.</td><td>32.021624</td></tr><tr><td>LONG.</td><td>103.632745</td></tr><tr><td colspan="2">ELEVATION +3133' NAVD 88</td></tr></table><br><p>CORNER COORDINATES TABLE (NAD 27)</p> <p>A - Y=382694.44, X=717221.42<br/>B - Y=382711.66, X=718552.69<br/>C - Y=373318.66, X=715938.24<br/>D - Y=373332.23, X=717271.91<br/>E - Y=371978.70, X=715943.63<br/>F - Y=371992.49, X=717277.98<br/>G - Y=372006.29, X=718612.32</p> | PROPOSED BOTTOM HOLE LOCATION |  | X= | 717,561 NAD 27 | Y= | 382,519 | LAT. | 32.049714 | LONG. | 103.631140 | X= | 758,748 NAD83 | Y= | 382,576 | LAT. | 32.049839 | LONG. | 103.631609 | SD WE 24 FED P23 3H WELL |  | X= | 717,276 NAD 27 | Y= | 372,253 | LAT. | 32.021499 | LONG. | 103.632277 | X= | 758,463 NAD83 | Y= | 372,310 | LAT. | 32.021624 | LONG. | 103.632745 | ELEVATION +3133' NAVD 88 |  | <p>1670'<br/>180'<br/>Proposed Last Take Point<br/>330' FNL, 1670' FWL<br/>13<br/>Proposed Producing Interval<br/>N 00°17'14" W 10,192.98'<br/>24<br/>Proposed First Take Point<br/>330' FSL, 1670' FWL<br/>N 77°42'46" E 344.60'<br/>1333'<br/>260'</p> | <p><sup>17</sup> OPERATOR CERTIFICATION</p> <p>I hereby certify that the information contained herein is true and complete to the best of my knowledge and belief, and that this organization either owns a working interest or unleased mineral interest in the land including the proposed bottom hole location or has a right to drill this well at this location pursuant to a contract with an owner of such a mineral or working interest, or to a voluntary pooling agreement or a compulsory pooling order heretofore entered by the division.</p> <p>Cindy Herrera-Murillo 2-25-16<br/>Signature Date<br/>Cindy Herrera-Murillo<br/>Printed Name<br/>Cherreramurillo@chevron.com<br/>E-mail Address</p> <p><sup>18</sup> SURVEYOR CERTIFICATION</p> <p>I hereby certify that the well location shown on this plat was plotted from field notes of actual surveys made by me or under my supervision and that the same is true and correct to the best of my belief.</p> <p>2-8-2016<br/>Date of Survey<br/>Signature and Seal of Professional Surveyor<br/>23006<br/>Certificate Number</p> |
|--|-------------------------------|--|----|----------------|----|---------|------|-----------|-------|------------|----|---------------|----|---------|------|-----------|-------|------------|--------------------------|--|----|----------------|----|---------|------|-----------|-------|------------|----|---------------|----|---------|------|-----------|-------|------------|--------------------------|--|--|--|
| PROPOSED BOTTOM HOLE LOCATION  |                               |  |    |                |    |         |      |           |       |            |    |               |    |         |      |           |       |            |                          |  |    |                |    |         |      |           |       |            |    |               |    |         |      |           |       |            |                          |  |  |  |
| X=   | 717,561 NAD 27                |  |    |                |    |         |      |           |       |            |    |               |    |         |      |           |       |            |                          |  |    |                |    |         |      |           |       |            |    |               |    |         |      |           |       |            |                          |  |  |  |
| Y=   | 382,519                       |  |    |                |    |         |      |           |       |            |    |               |    |         |      |           |       |            |                          |  |    |                |    |         |      |           |       |            |    |               |    |         |      |           |       |            |                          |  |  |  |
| LAT.   | 32.049714                     |  |    |                |    |         |      |           |       |            |    |               |    |         |      |           |       |            |                          |  |    |                |    |         |      |           |       |            |    |               |    |         |      |           |       |            |                          |  |  |  |
| LONG.  | 103.631140                    |  |    |                |    |         |      |           |       |            |    |               |    |         |      |           |       |            |                          |  |    |                |    |         |      |           |       |            |    |               |    |         |      |           |       |            |                          |  |  |  |
| X=   | 758,748 NAD83                 |  |    |                |    |         |      |           |       |            |    |               |    |         |      |           |       |            |                          |  |    |                |    |         |      |           |       |            |    |               |    |         |      |           |       |            |                          |  |  |  |
| Y=   | 382,576                       |  |    |                |    |         |      |           |       |            |    |               |    |         |      |           |       |            |                          |  |    |                |    |         |      |           |       |            |    |               |    |         |      |           |       |            |                          |  |  |  |
| LAT.   | 32.049839                     |  |    |                |    |         |      |           |       |            |    |               |    |         |      |           |       |            |                          |  |    |                |    |         |      |           |       |            |    |               |    |         |      |           |       |            |                          |  |  |  |
| LONG.  | 103.631609                    |  |    |                |    |         |      |           |       |            |    |               |    |         |      |           |       |            |                          |  |    |                |    |         |      |           |       |            |    |               |    |         |      |           |       |            |                          |  |  |  |
| SD WE 24 FED P23 3H WELL   |                               |  |    |                |    |         |      |           |       |            |    |               |    |         |      |           |       |            |                          |  |    |                |    |         |      |           |       |            |    |               |    |         |      |           |       |            |                          |  |  |  |
| X=   | 717,276 NAD 27                |  |    |                |    |         |      |           |       |            |    |               |    |         |      |           |       |            |                          |  |    |                |    |         |      |           |       |            |    |               |    |         |      |           |       |            |                          |  |  |  |
| Y=   | 372,253                       |  |    |                |    |         |      |           |       |            |    |               |    |         |      |           |       |            |                          |  |    |                |    |         |      |           |       |            |    |               |    |         |      |           |       |            |                          |  |  |  |
| LAT.   | 32.021499                     |  |    |                |    |         |      |           |       |            |    |               |    |         |      |           |       |            |                          |  |    |                |    |         |      |           |       |            |    |               |    |         |      |           |       |            |                          |  |  |  |
| LONG.  | 103.632277                    |  |    |                |    |         |      |           |       |            |    |               |    |         |      |           |       |            |                          |  |    |                |    |         |      |           |       |            |    |               |    |         |      |           |       |            |                          |  |  |  |
| X=   | 758,463 NAD83                 |  |    |                |    |         |      |           |       |            |    |               |    |         |      |           |       |            |                          |  |    |                |    |         |      |           |       |            |    |               |    |         |      |           |       |            |                          |  |  |  |
| Y=   | 372,310                       |  |    |                |    |         |      |           |       |            |    |               |    |         |      |           |       |            |                          |  |    |                |    |         |      |           |       |            |    |               |    |         |      |           |       |            |                          |  |  |  |
| LAT.   | 32.021624                     |  |    |                |    |         |      |           |       |            |    |               |    |         |      |           |       |            |                          |  |    |                |    |         |      |           |       |            |    |               |    |         |      |           |       |            |                          |  |  |  |
| LONG.  | 103.632745                    |  |    |                |    |         |      |           |       |            |    |               |    |         |      |           |       |            |                          |  |    |                |    |         |      |           |       |            |    |               |    |         |      |           |       |            |                          |  |  |  |
| ELEVATION +3133' NAVD 88   |                               |  |    |                |    |         |      |           |       |            |    |               |    |         |      |           |       |            |                          |  |    |                |    |         |      |           |       |            |    |               |    |         |      |           |       |            |                          |  |  |  |





**Chevron**  
Midcontinent Business Unit  
**SALADO DRAW**  
**DRILLING PROGRAM**  
**EXHIBIT 5**



# Exhibit 7

| SD WE 24 FED P23 4H WELL  | NW ARCH. AREA CORNER   | NE ARCH. AREA CORNER   | SE ARCH. AREA CORNER   | SW ARCH. AREA CORNER   | LEGEND  |
|---|--|--|--|--|---|
| X= 717,301 NAD 27<br>Y= 372,253<br>LAT. 32.021499<br>LONG. 103.632196 | X= 716,922 NAD 27<br>Y= 372,549<br>ELEVATION +3137' NAVD 88                  | X= 717,597 NAD 27<br>Y= 372,555<br>ELEVATION +3135' NAVD 88                  | X= 717,603 NAD 27<br>Y= 371,955<br>ELEVATION +3131' NAVD 88                  | X= 716,928 NAD 27<br>Y= 371,949<br>ELEVATION +3132' NAVD 88                  | Section Line<br>Access Centerline<br>Water Line<br>Fence Line<br>Existing Pad<br>Plugged & Abandoned Well |
| X= 758,488 NAD83<br>Y= 372,310<br>LAT. 32.021625<br>LONG. 103.632664  | NW PAD CORNER<br>X= 717,054 NAD 27<br>Y= 372,375<br>ELEVATION +3136' NAVD 88 | NE PAD CORNER<br>X= 717,504 NAD 27<br>Y= 372,380<br>ELEVATION +3133' NAVD 88 | SE PAD CORNER<br>X= 717,508 NAD 27<br>Y= 371,995<br>ELEVATION +3132' NAVD 88 | SW PAD CORNER<br>X= 717,058 NAD 27<br>Y= 371,990<br>ELEVATION +3133' NAVD 88 |   |
| ELEVATION +3133' NAVD 88  |  |  |  |  |   |

R 32 E

FOR THE EXCLUSIVE USE OF  
CHEVRON U.S.A. INC.  
I, Robert L. Lastrapes, Registered Professional  
Land Surveyor, do hereby state this plat is true  
and correct to the best of my knowledge.

Sec. 24

Bureau of Land Management

Not to be used for construction, bidding,  
recording, conveyance, sales, or as the  
basis for the issuance of a permit.



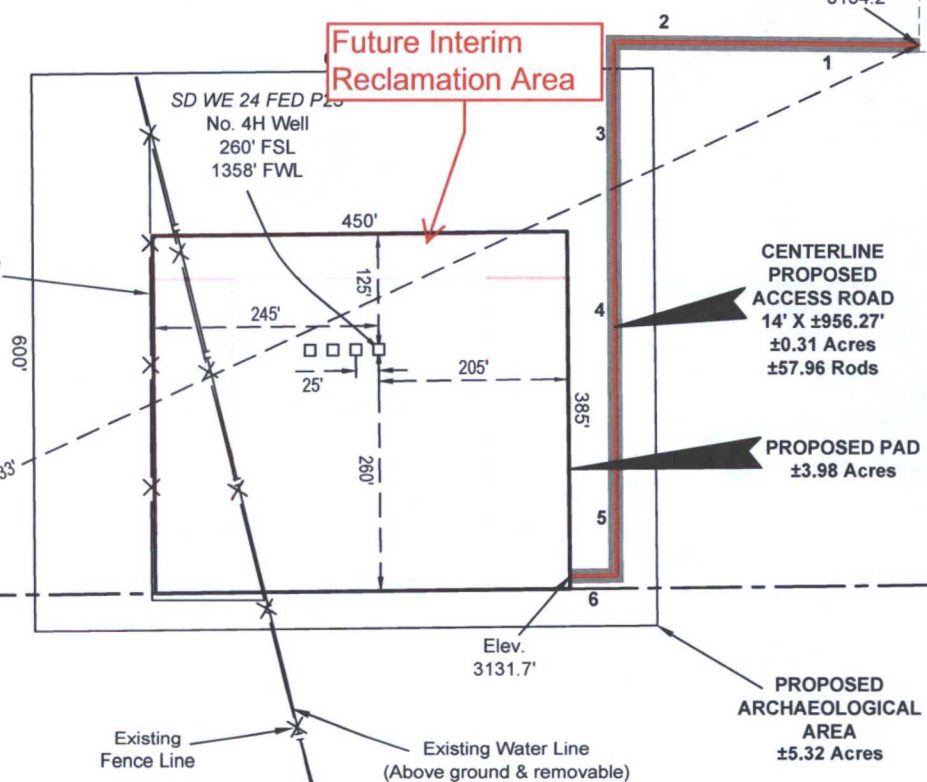
Robert L. Lastrapes  
Registration No. 23006

Sec. 23

Bureau of Land Management



Fnd. 2" Iron  
Pipe w/Cap @  
the SW Corner  
of Section 24



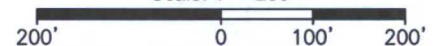
Sec. 25

Bureau of Land Management

SURFACE USE PLAT

Page 1 of 3

Scale: 1" = 200'



CHEVRON U.S.A. INC.  
PROPOSED PAD & ACCESS ROAD  
SD WE 24 FED P23  
SECTION 24, T26S-R32E  
LEA COUNTY, NEW MEXICO



C. H. Fenstermaker & Associates, L.L.C.  
135 Regency Sq. Lafayette, LA 70508  
Ph. 337-237-2200 Fax. 337-232-3299  
www.fenstermaker.com

| DRAWN BY: TBD  | REVISIONS |                  |                 |
|--|-----------|------------------|-----------------|
| PROJ. MGR.: VHV  | No. 1     | DATE: 02/10/2016 | REVISED BY: TBD |
| DATE: 11/13/2015   | No.       | DATE:            | REVISED BY:     |
| FILENAME: T\2015\2153300\DWG\SD WE 24 FED P23 4H_SUP.dwg |           |                  |                 |

# Exhibit 2

| SD WE 24 FED P23 3H WELL   | NW ARCH. AREA CORNER  | NE ARCH. AREA CORNER  | SE ARCH. AREA CORNER  | SW ARCH. AREA CORNER  |
|--|---|---|---|---|
| X= 717,276 NAD 27<br>Y= 372,253<br>LAT. 32.021499<br>LONG. 103.632277                            | X= 716,922 NAD 27<br>Y= 372,549<br>ELEVATION +3137' NAVD 88 | X= 717,597 NAD 27<br>Y= 372,555<br>ELEVATION +3135' NAVD 88 | X= 717,603 NAD 27<br>Y= 371,955<br>ELEVATION +3131' NAVD 88 | X= 716,928 NAD 27<br>Y= 371,949<br>ELEVATION +3132' NAVD 88 |
| X= 758,463 NAD83<br>Y= 372,310<br>LAT. 32.021624<br>LONG. 103.632745<br>ELEVATION +3133' NAVD 88 | NW PAD CORNER   | NE PAD CORNER   | SE PAD CORNER   | SW PAD CORNER   |
|  | X= 717,054 NAD 27<br>Y= 372,375<br>ELEVATION +3136' NAVD 88 | X= 717,504 NAD 27<br>Y= 372,380<br>ELEVATION +3133' NAVD 88 | X= 717,508 NAD 27<br>Y= 371,995<br>ELEVATION +3132' NAVD 88 | X= 717,058 NAD 27<br>Y= 371,990<br>ELEVATION +3133' NAVD 88 |

| LEGEND |                          |
|--------|--------------------------|
|        | Section Line             |
|        | Access Centerline        |
|        | Water Line               |
|        | Fence Line               |
|        | Existing Pad             |
|        | Plugged & Abandoned Well |

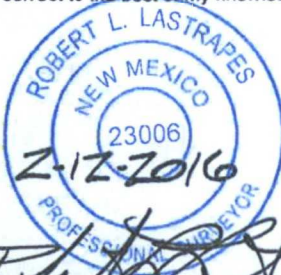
R 32 E

Sec. 24

Bureau of Land Management

FOR THE EXCLUSIVE USE OF  
CHEVRON U.S.A. INC.

I, Robert L. Lastrapes, Registered Professional  
Land Surveyor, do hereby state this plat is true  
and correct to the best of my knowledge.



Robert L. Lastrapes  
Registration No. 23006

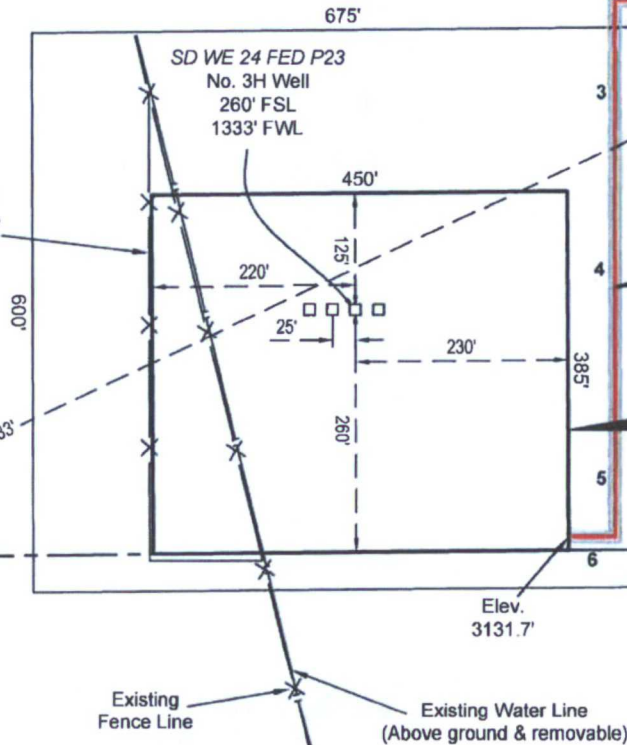
Sec. 23

Bureau of Land Management



Fnd. 2" Iron  
Pipe w/Cap @  
the SW Corner  
of Section 24

Proposed  
Fence Line  
Re-Route



Sec. 25

Bureau of Land Management

CENTERLINE  
PROPOSED  
ACCESS ROAD  
14' X ±956.27'  
±0.31 Acres  
±57.96 Rods

PROPOSED PAD  
±3.98 Acres

PROPOSED  
ARCHAEOLOGICAL  
AREA  
±5.32 Acres

T  
26  
S

SURFACE USE PLAT

Page 1 of 3

Scale: 1" = 200'  
200' 0 100' 200'

CHEVRON U.S.A. INC.  
PROPOSED PAD & ACCESS ROAD  
SD WE 24 FED P23 NO. 3H WELL  
SECTION 24, T26S-R32E  
LEA COUNTY, NEW MEXICO



C. H. Fenstermaker & Associates, L.L.C.  
135 Regency Sq Lafayette, LA 70508  
Ph. 337-237-2200 Fax. 337-232-3299  
www.fenstermaker.com

| DRAWN BY: TBD  |       | REVISIONS        |                 |
|--|-------|------------------|-----------------|
| PROJ. MGR.: VHV  | No. 1 | DATE: 02/10/2016 | REVISED BY: TBD |
| DATE: 11/13/2015                                       | No.   | DATE:            | REVISED BY:     |
| FILENAME: T120152153299DWG\SD WE 24 FED P23 3H_SUP.dwg |       |                  |                 |



SEE  
PAGE 1

## Sec. 24

Bureau of Land  
Management

±2,913.22'

Sahara Operating Co.-  
North El Mar Unit  
Well No. 1

Fnd. 2" Iron Pipe  
w/Cap @ the  
SW Corner of  
Section 24

Existing Lease  
Road to be Used  
for Access Road  
±7,753.18'

## Sec. 25

Bureau of Land  
Management

±4,839.96'

T26S-R32E  
T26S-R33E

Battle Axe Road

NAD 27 NEW MEXICO EAST ZONE

FOR THE EXCLUSIVE USE OF  
CHEVRON U.S.A. INC.  
I, Robert L. Lastrapes, Registered Professional  
Land Surveyor, do hereby state this plat is true  
and correct to the best of my knowledge.



Robert L. Lastrapes  
Registration No. 23006

### LEGEND

|  |                          |
|--|--------------------------|
|  | Section Line             |
|  | Access Centerline        |
|  | Water Line               |
|  | Fence Line               |
|  | Existing Pad             |
|  | Existing Lease Road      |
|  | Plugged & Abandoned Well |
|  | As-Drilled Well          |

Scale: 1" = 1000'

1000' 0 500' 1000'

Page 2 of 3

### SURFACE USE PLAT

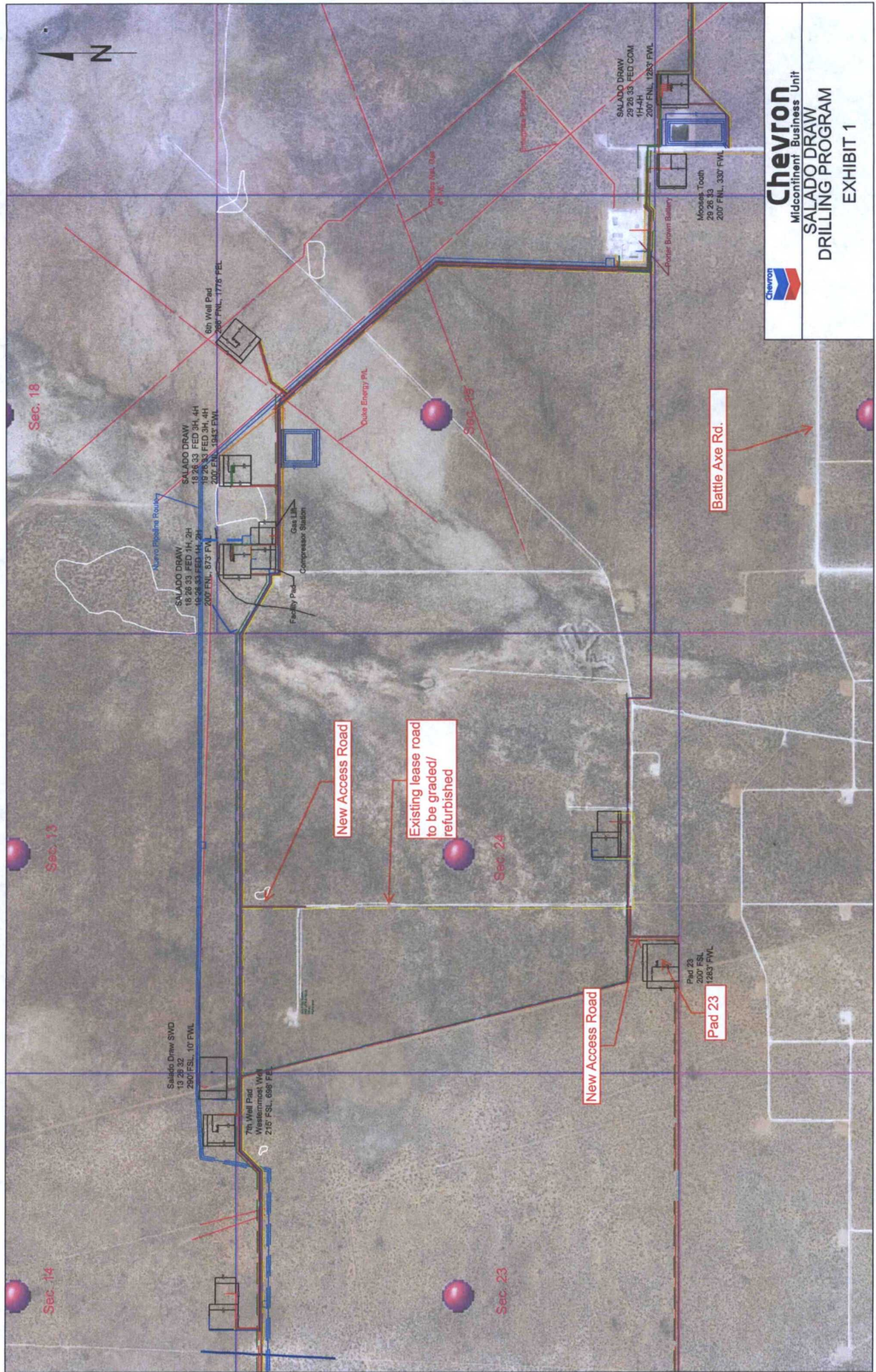
**CHEVRON U.S.A. INC.**  
PROPOSED PAD & ACCESS ROAD  
SD WE 24 FED P23 NO. 3H WELL  
SECTION 24, T26S-R32E  
LEA COUNTY, NEW MEXICO



C. H. Fenstermaker & Associates, L.L.C.  
135 Regency Sq. Lafayette, LA 70508  
Ph. 337-237-2200 Fax. 337-232-3299  
[www.fenstermaker.com](http://www.fenstermaker.com)

| DRAWN BY: TBD  |       | REVISIONS        |                 |
|--|-------|------------------|-----------------|
| PROJ. MGR.: VHV  | No. 1 | DATE: 02/10/2016 | REVISED BY: TBD |
| DATE: 11/13/2015                                       | No.   | DATE:            | REVISED BY:     |
| FILENAME: T20152153299\DWG\SD WE 24 FED P23 3H_SUP.dwg |       |                  |                 |





**Chevron**  
Midcontinent Business Unit  
**SALADO DRAW**  
**DRILLING PROGRAM**  
**EXHIBIT 1**



**NOTE:**

Please be advised, that while reasonable efforts are made to locate and verify pipelines and anomalies using our standard pipeline locating equipment, it is impossible to be 100 % effective. As such, we advise using caution when performing work as there is a possibility that pipelines and other hazards, such as fiber optic cables, PVC pipelines, etc. may exist undetected on site.

**NOTE:**

Many states maintain information centers that establish links between those who dig (excavators) and those who own and operate underground facilities (operators). It is advisable and in most states, law, for the contractor to contact the center for assistance in locating and marking underground utilities. For guidance: New Mexico One Call System - [www.nmonecall.org](http://www.nmonecall.org).

**DISCLAIMER:** At this time, C. H. Fenstermaker & Associates, L.L.C. has not performed nor was asked to perform any type of engineering, hydrological modeling, flood plain, or "No Rise" certification analyses, including but not limited to determining whether the project will impact flood hazards in connection with federal/FEMA, state, and/or local laws, ordinances and regulations. Accordingly, Fenstermaker makes no warranty or representation of any kind as to the foregoing issues, and persons or entities using this information shall do so at their own risk.

FOR THE EXCLUSIVE USE OF  
CHEVRON U.S.A. INC.  
I, Robert L. Lastrapes, Registered Professional  
Land Surveyor, do hereby state this plat is true  
and correct to the best of my knowledge.

ROBERT L. LASTRAPES  
NEW MEXICO  
23006  
Z-12-7016  
PROFESSIONAL SURVEYOR  
Robert L. Lastrapes  
Registration No. 23006

| CENTERLINE PROPOSED ACCESS ROAD |                 |          |
|---------------------------------|-----------------|----------|
| COURSE                          | BEARING         | DISTANCE |
| 1                               | N 89° 27' 47" W | 168.86'  |
| 2                               | N 89° 29' 35" W | 163.19'  |
| 3                               | S 00° 24' 21" E | 195.16'  |
| 4                               | S 00° 26' 02" E | 204.71'  |
| 5                               | S 00° 23' 52" E | 174.37'  |
| 6                               | S 89° 24' 28" W | 49.98'   |



Page 3 of 3

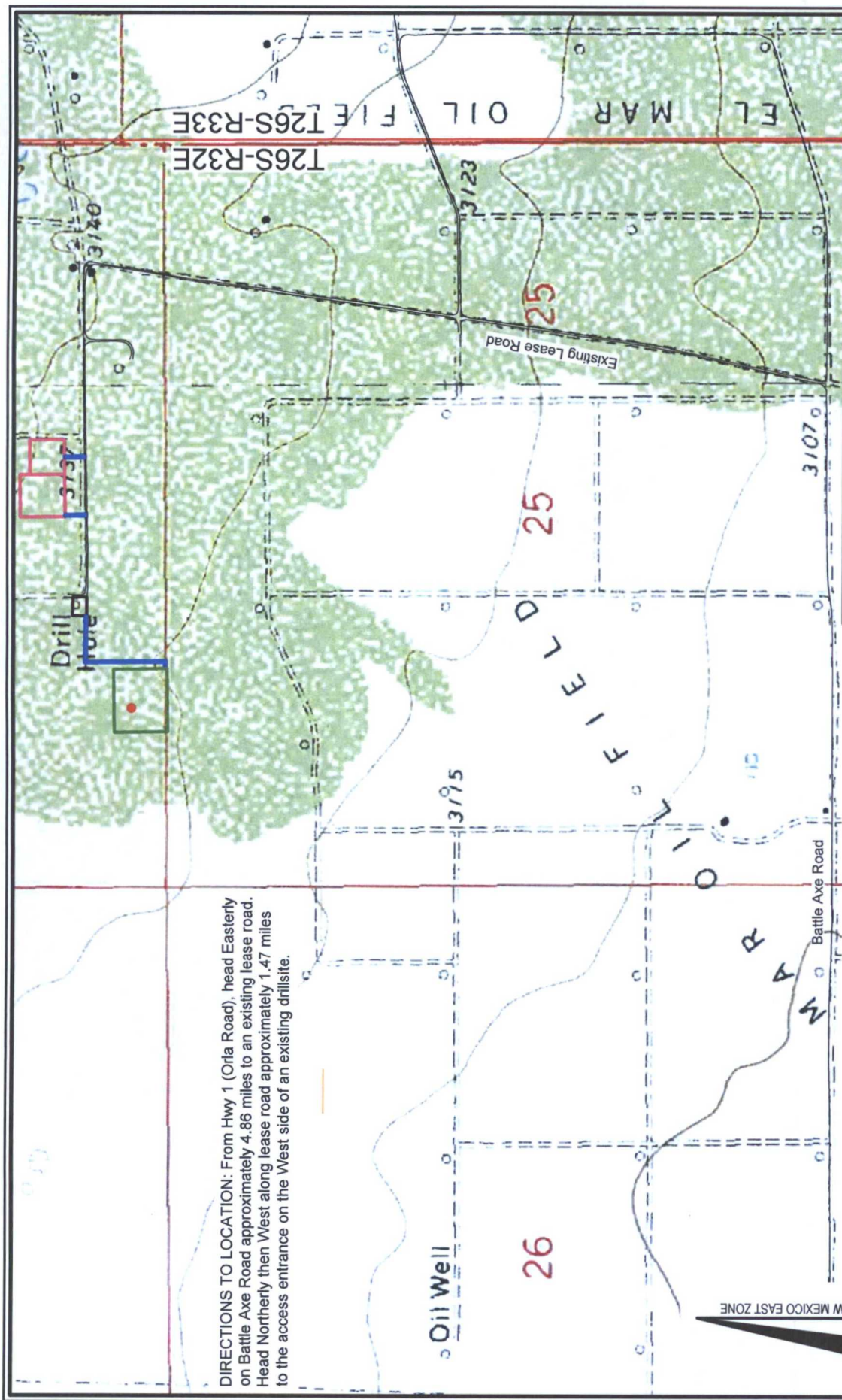
**SURFACE USE PLAT**

**CHEVRON U.S.A. INC.**  
PROPOSED PAD & ACCESS ROAD  
SD WE 24 FED P23 NO. 3H WELL  
SECTION 24, T26S-R32E  
LEA COUNTY, NEW MEXICO



C. H. Fenstermaker & Associates, L.L.C.  
135 Regency Sq. Lafayette, LA 70508  
Ph. 337-237-2200 Fax 337-232-3299  
[www.fenstermaker.com](http://www.fenstermaker.com)

| DRAWN BY: TBD  |       | REVISIONS        |                 |
|--|-------|------------------|-----------------|
| PROJ. MGR.: VHV  | No. 1 | DATE: 02/10/2016 | REVISED BY: TBD |
| DATE: 11/13/2015   | No.   | DATE:            | REVISED BY:     |
| FILENAME: T\2015\2153299\DWG\SD WE 24 FED P23 3H_SUP.dwg |       |                  |                 |



DIRECTIONS TO LOCATION: From Hwy 1 (Orla Road), head Easterly on Battle Axe Road approximately 4.86 miles to an existing lease road. Head Northerly then West along lease road approximately 1.47 miles to the access entrance on the West side of an existing drillsite.

**CHEVRON U.S.A. INC.**  
 SD WE 24 FED P23 NO. 3H WELL  
 LOCATED 260' FSL & 1333' FWL  
 SECTION 24, T26S-R32E  
 LEA COUNTY, NEW MEXICO

- LEGEND**
- Proposed Well
  - Proposed Access Road
  - Proposed Drillsite
  - Existing Road
  - Section Line
  - Existing Facility
  - Proposed Facility

Scale: 1" = 1,000'



**FENSTERMAKER**

C. H. Fenstermaker & Associates, L.L.C.  
 135 Regency Sq. Lafayette, LA 70508  
 Ph. 337-237-2200 Fax. 337-232-3299  
[www.fenstermaker.com](http://www.fenstermaker.com)

| DRAWN BY: TBD   |       | REVISIONS        |                 |
|---|-------|------------------|-----------------|
| PROJ. MGR.: VHV                                       | No. 1 | DATE: 02/10/2016 | REVISED BY: TBD |
| DATE: 11/13/2015                                      | No.   | DATE:            | REVISED BY:     |
| FILENAME: T201512153299DWGSD WE 24 FED P23 3H_APD.dwg |       |                  |                 |



# Exhibit 3

SD WE 23 FED P5 1H

TWN 26S - RNG 32E - SEC 14 and SEC 23  
LEA, CO NM  
Surface and Bottom Hole Locations – 1 Mile Radius

