

District I  
1625 N. French Dr., Hobbs, NM 88240  
Phone: (575) 393-6161 Fax: (575) 393-0720  
District II  
811 S. First St., Artesia, NM 88210  
Phone: (575) 748-1283 Fax: (575) 748-9720  
District III  
1000 Rio Brazos Road, Aztec, NM 87410  
Phone: (505) 334-6178 Fax: (505) 334-6170  
District IV  
1220 S. St. Francis Dr., Santa Fe, NM 87505  
Phone: (505) 476-3460 Fax: (505) 476-3462

State of New Mexico  
Energy, Minerals & Natural Resources Department  
OIL CONSERVATION DIVISION  
1220 South St. Francis Dr.  
Santa Fe, NM 87505

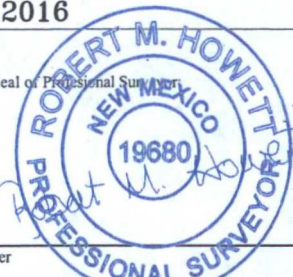
Form C-102  
Revised August 1, 2011  
Submit one copy to appropriate  
District Office

**XX** AMENDED REPORT

WELL LOCATION AND ACREAGE DEDICATION PLAT

<sup>1</sup> API Number <b>30-025-43229</b>		<sup>2</sup> Pool Code <b>22900</b>		<sup>3</sup> Pool Name <b>EUNICE; BLI-TU-DR., N.</b>	
<sup>4</sup> Property Code <b>37346</b>		<sup>5</sup> Property Name <b>WEST BLINEBRY DRINKARD UNIT</b>			
<sup>7</sup> OGRID NO. <b>873</b>		<sup>8</sup> Operator Name <b>APACHE CORPORATION</b>			
		<sup>6</sup> Well Number <b>145</b>			
		<sup>9</sup> Elevation <b>3476'</b>			
<sup>10</sup> Surface Location					
UL or lot no. <b>H</b>	Section <b>17</b>	Township <b>21S</b>	Range <b>37E</b>	Lot Idn	Feet from the <b>1780</b>
				North/South line <b>NORTH</b>	Feet From the <b>940</b>
				East/West line <b>EAST</b>	County <b>LEA</b>
<sup>11</sup> Bottom Hole Location If Different From Surface					
UL or lot no. <b>H</b>	Section <b>17</b>	Township <b>21S</b>	Range <b>37E</b>	Lot Idn	Feet from the <b>1960</b>
				North/South line <b>NORTH</b>	Feet from the <b>765</b>
				East/West line <b>EAST</b>	County <b>LEA</b>
<sup>12</sup> Dedicated Acres <b>40</b>		<sup>13</sup> Joint or Infill		<sup>14</sup> Consolidation Code	
				<sup>15</sup> Order No.	

No allowable will be assigned to this completion until all interest have been consolidated or a non-standard unit has been approved by the division.

<sup>16</sup> <b>GEODETIC DATA</b> NAD 27 GRID - NM EAST  <sup>17</sup> <b>SURFACE LOCATION</b> N: 540688.0 - E: 855919.7  LAT: 32.48116960° N LONG: 103.17915057° W  <sup>18</sup> <b>BOTTOM HOLE</b> N: 540509.6 - E: 856096.8  LAT: 32.48067408° N LONG: 103.17858289° W  <sup>19</sup> <b>CORNER DATA</b> NAD 27 GRID - NM EAST A: CALCULATED CORNER N 537145.2 - E 851619.3 B: FOUND BRASS CAP "1911" N 539785.9 - E 851590.3 C: FOUND BRASS CAP "1911" N 542424.8 - E 851561.6 D: FOUND BRASS CAP "1911" N 542451.6 - E 854200.7 E: FOUND BRASS CAP "1911" N 542476.5 - E 856839.2 F: CALCULATED CORNER N 537194.4 - E 856899.7		<sup>20</sup> <b>DETAIL "A"</b> S 44°46'48" E (GRID) 251.34' (HORIZ.)  SEE DETAIL "A" S. L. B. H. 940' 765' 1780' 1960' 5282.96' S 00°39'21" E 5281.20' S 89°27'59" W		<sup>21</sup> <b>OPERATOR CERTIFICATION</b> I hereby certify that the information contained herein is true and complete to the best of my knowledge and belief, and that this organization either owns a working interest or unleased mineral interest in the land including the proposed bottom hole location or has a right to drill this well at this location pursuant to a contract with an owner of such a mineral or working interest, or to a voluntary pooling agreement or a compulsory pooling order heretofore entered by the division.  <i>Sorina L Flores</i> 5/12/2016 Signature Date <b>Sorina L. Flores</b> Printed Name <b>sorina.flores@apachecorp.com</b> E-mail Address
		<sup>22</sup> <b>SURVEYOR CERTIFICATION</b> I hereby certify that the well location shown on this plat was plotted from field notes of actual surveys made by me or under my supervision, and that the same is true and correct to the best of my belief.  <b>1-28-2016</b> Date of Survey Signature and Seal of Professional Surveyor  <b>19680</b> Certificate Number <b>REV. WELL # 5-12-16</b>		

District I  
1625 N. French Dr., Hobbs, NM 88240  
Phone: (575) 393-6161 Fax: (575) 393-0720  
District II  
811 S. First St., Artesia, NM 88210  
Phone: (575) 748-1283 Fax: (575) 748-9720  
District III  
1000 Rio Brazos Road, Aztec, NM 87410  
Phone: (505) 334-6178 Fax: (505) 334-6170  
District IV  
1220 S. St. Francis Dr., Santa Fe, NM 87505  
Phone: (505) 476-3460 Fax: (505) 476-3462

State of New Mexico  
Energy, Minerals & Natural Resources Department  
OIL CONSERVATION DIVISION  
1220 South St. Francis Dr.  
Santa Fe, NM 87505

Form C-102  
Revised August 1, 2011  
Submit one copy to appropriate  
District Office

☒ AMENDED REPORT

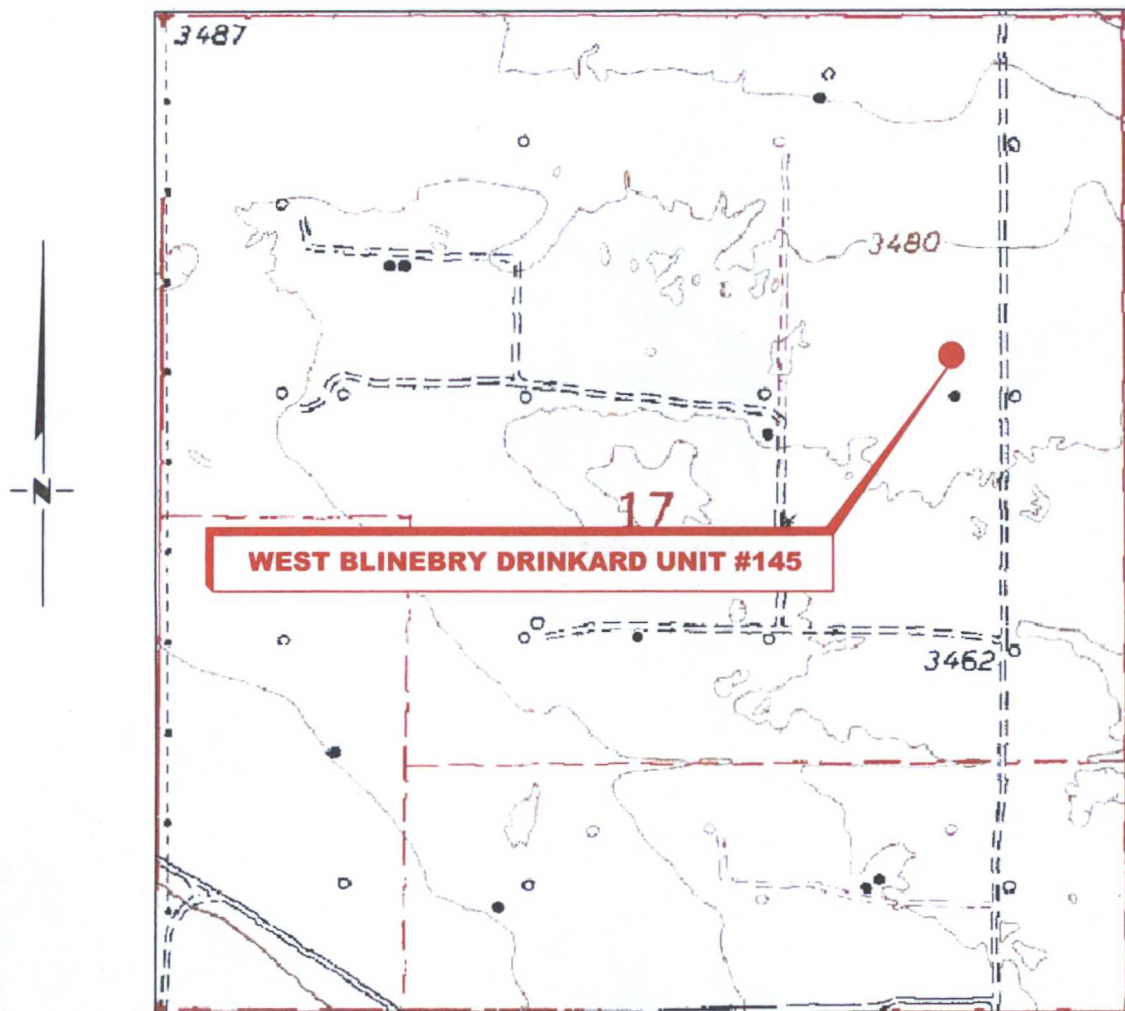
WELL LOCATION AND ACREAGE DEDICATION PLAT

<sup>1</sup> API Number 30-025-43229		<sup>2</sup> Pool Code 22900		<sup>3</sup> Pool Name EUNICE; BLI-TU-DRI., N.					
<sup>4</sup> Property Code 37346		<sup>5</sup> Property Name WEST BLINEBRY DRINKARD UNIT						<sup>6</sup> Well Number 145	
<sup>7</sup> GRID NO. 873		<sup>8</sup> Operator Name APACHE CORPORATION						<sup>9</sup> Elevation 3476'	
<sup>10</sup> Surface Location									
UL or lot no. H	Section 17	Township 21S	Range 37E	Lot Idn	Feet from the 1780	North/South line NORTH	Feet From the 940	East/West line EAST	County LEA
<sup>11</sup> Bottom Hole Location If Different From Surface									
UL or lot no. H	Section 17	Township 21S	Range 37E	Lot Idn	Feet from the 1960	North/South line NORTH	Feet from the 765	East/West line EAST	County LEA
<sup>12</sup> Dedicated Acres 40		<sup>13</sup> Joint or Infill		<sup>14</sup> Consolidation Code		<sup>15</sup> Order No.			

No allowable will be assigned to this completion until all interest have been consolidated or a non-standard unit has been approved by the division.

<sup>16</sup> (C) N 89°25'08" E 2639.50' GEODETIC DATA NAD 83 GRID - NM EAST SURFACE LOCATION N: 540748.4 - E: 897103.9 LAT: 32.48129157° N LONG: 103.17962133° W BOTTOM HOLE N: 540570.0 - E: 897281.0 LAT: 32.48079602° N LONG: 103.17905362° W CORNER DATA NAD 83 GRID - NM EAST A: CALCULATED CORNER N 537205.8 - E 892803.6 B: FOUND BRASS CAP "1911" N 539846.6 - E 892774.5 C: FOUND BRASS CAP "1911" N 542485.6 - E 892745.8 D: FOUND BRASS CAP "1911" N 542512.2 - E 895384.9 E: FOUND BRASS CAP "1911" N 542536.9 - E 898023.4 F: CALCULATED CORNER N 537254.7 - E 898084.0		(D) N 89°27'37" E 2638.88' SEE DETAIL "A" S. L. 1780' B. H. 1960' 940' 765' S 44°46'48" E (GRID) 251.34' (HORIZ.)		<sup>17</sup> OPERATOR CERTIFICATION I hereby certify that the information contained herein is true and complete to the best of my knowledge and belief, and that this organization either owns a working interest or unleased mineral interest in the land including the proposed bottom hole location or has a right to drill this well at this location pursuant to a contract with an owner of such a mineral or working interest, or to a voluntary pooling agreement or a compulsory pooling order heretofore entered by the division. Sorina L Flores 5/12/16 Signature Date Sorina L. Flores Printed Name sorina.flores@spachecorp.com E-mail Address	
(B) N 00°37'20" W 2639.34' (A) N 00°37'41" W 2641.15'		(E) S 00°39'21" E 5282.96' DETAIL "A" 3477.7' 600' 3478.3' 600' S. L. 3474.6' 3474.8'		<sup>18</sup> SURVEYOR CERTIFICATION I hereby certify that the well location shown on this plat was plotted from field notes of actual surveys made by me or under my supervision, and that the same is true and correct to the best of my belief. 1-28-2016 Date of Survey Signature and Seal of Professional Surveyor 19680 Certificate Number REV. WELL # 5-12-16	

# LOCATION VERIFICATION MAP



(Eunice, NM, is located approx. 3.3 miles to the Southeast.)

**SECTION 17, TWP. 21 SOUTH, RGE. 37 EAST,  
N. M. P. M., LEA CO., NEW MEXICO**

OPERATOR: Apache Corporation  
LEASE: West Blinebry Drinkard Unit  
WELL NO.: 145  
ELEVATION: 3476'

LOCATION: 1780' FNL & 940' FEL  
CONTOUR INTERVAL: 10'  
USGS TOPO. SOURCE MAP:  
Eunice, NM (1969)

Firm No.: TX 10193838 NM 4655451

Copyright 2015 - All Rights Reserved

NO.	REVISION	DATE
JOB NO.:	LS1601030	
DWG. NO.:	1601030LVM	

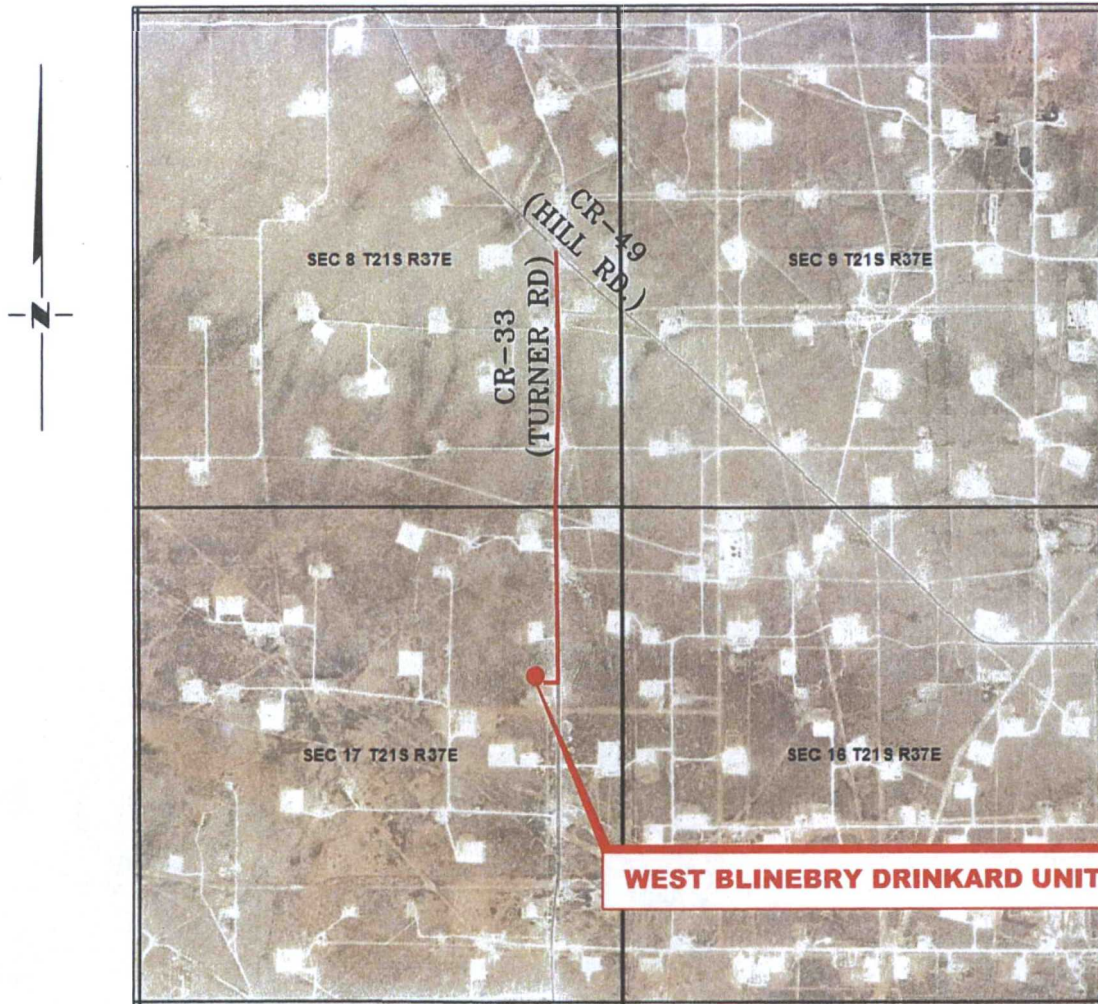
## RRC

308 W. BROADWAY ST., HOBBS, NM 88240 (575) 964-8200

SCALE: 1000'  
DATE: 1-28-2016  
SURVEYED BY: BK/CG  
DRAWN BY: LPS  
APPROVED BY: RMH  
SHEET : 1 OF 1

# VICINITY MAP

NOT TO SCALE



*SECTION 17, TWP. 21 SOUTH, RGE. 37 EAST,  
N. M. P. M., LEA CO., NEW MEXICO*

OPERATOR: Apache Corporation  
 LEASE: West Blinebry Drinkard Unit  
 WELL NO.: 145

LOCATION: 1780' FNL & 940' FEL  
 ELEVATION: 3476'

Firm No.: TX 10193838 NM 4655451

Copyright 2014 - All Rights Reserved

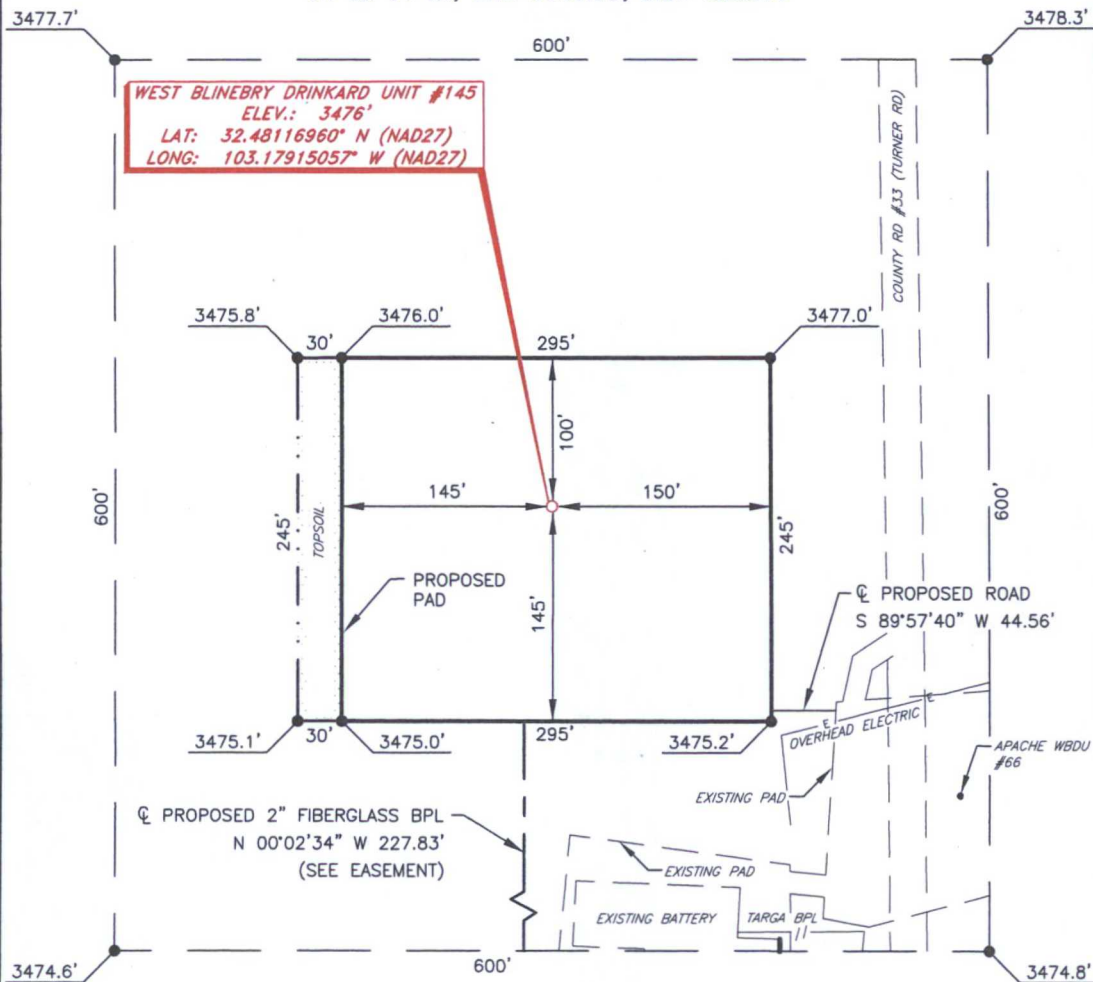
NO.	REVISION	DATE
JOB NO.: LS1601030		
DWG. NO.: 1601030VM		

# RRC

308 W. BROADWAY ST., HOBBS, NM 88240 (575) 964-8200

SCALE: NTS
DATE: 1-28-2016
SURVEYED BY: BK/CG
DRAWN BY: LPS
APPROVED BY: RMH
SHEET : 1 OF 1

**APACHE CORPORATION**  
**WEST BLINEBRY DRINKARD UNIT #145**  
 (1780' FNL & 940' FEL)  
 SECTION 17, T21S, R37E  
 N. M. P. M., LEA COUNTY, NEW MEXICO



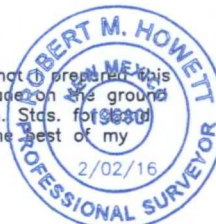
DIRECTIONS TO LOCATION

From the intersection of CR-49 (Hill Rd.) and CR-33 (Turner Rd.);  
 Go South on CR-33 approx. 0.9 miles to a lease road on the right;  
 Turn right and go West approx. 240 feet to location on the right.



I, R. M. Howett, a N. M. Professional Surveyor, hereby certify that I prepared this unclassified survey of a well location from an actual survey made on the ground under my direct supervision, said survey and plat meet the Min. Stats. for 1980 Surveying in the State of N. M. and are true and correct to the best of my knowledge and belief.

*Robert M. Howett*  
 Robert M. Howett NM PS 19680



Firm No.: TX 10193838 NM 4655451

Copyright 2014 - All Rights Reserved

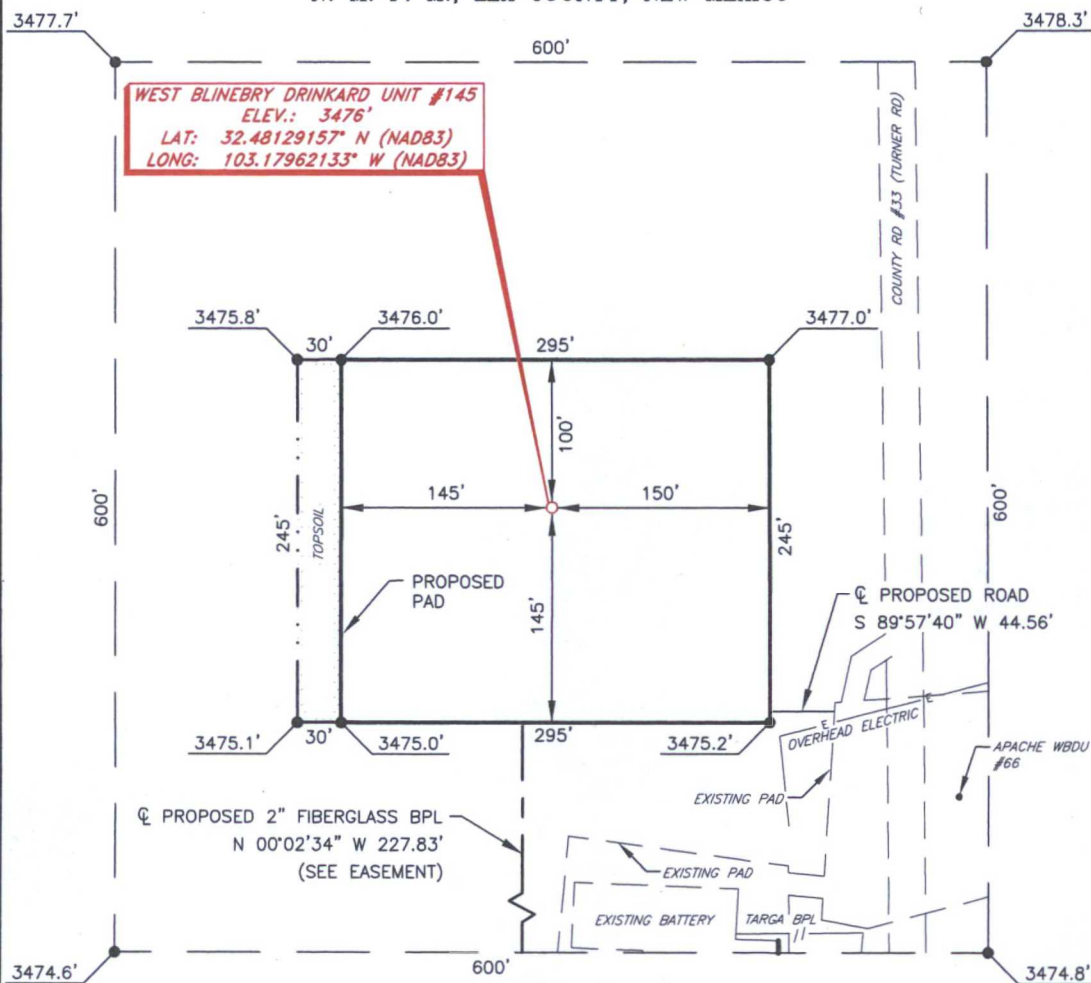
NO.	REVISION	DATE
JOB NO.:	LS1601030	
DWG. NO.:	1601030PAD	

**RRC**

308 W. BROADWAY ST., HOBBS, NM 88240 (575) 964-8200

SCALE:	1" = 100'
DATE:	1-28-2016
SURVEYED BY:	ML/CE
DRAWN BY:	LPS
APPROVED BY:	RMH
SHEET :	1 OF 1

**APACHE CORPORATION**  
**WEST BLINEBRY DRINKARD UNIT #145**  
 (1780' FNL & 940' FEL)  
 SECTION 17, T21S, R37E  
 N. M. P. M., LEA COUNTY, NEW MEXICO



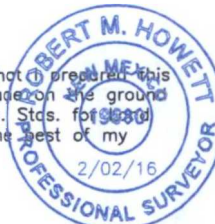
DIRECTIONS TO LOCATION

From the intersection of CR-49 (Hill Rd.) and CR-33 (Turner Rd.);  
 Go South on CR-33 approx. 0.9 miles to a lease road on the right;  
 Turn right and go West approx. 240 feet to location on the right.

SCALE: 1" = 100'  
 0 50 100  
 BEARINGS ARE  
 NAD 83 GRID - NM EAST  
 DISTANCES ARE GROUND

I, R. M. Howett, a N. M. Professional Surveyor, hereby certify that I prepared this unclassified survey of a well location from an actual survey made on the ground under my direct supervision, said survey and plat meet the Min. Stats. for 1983 Surveying in the State of N. M. and are true and correct to the best of my knowledge and belief.

*Robert M. Howett*  
 Robert M. Howett NM PS 19680



Firm No.: TX 10193838 NM 4655451

Copyright 2014 - All Rights Reserved

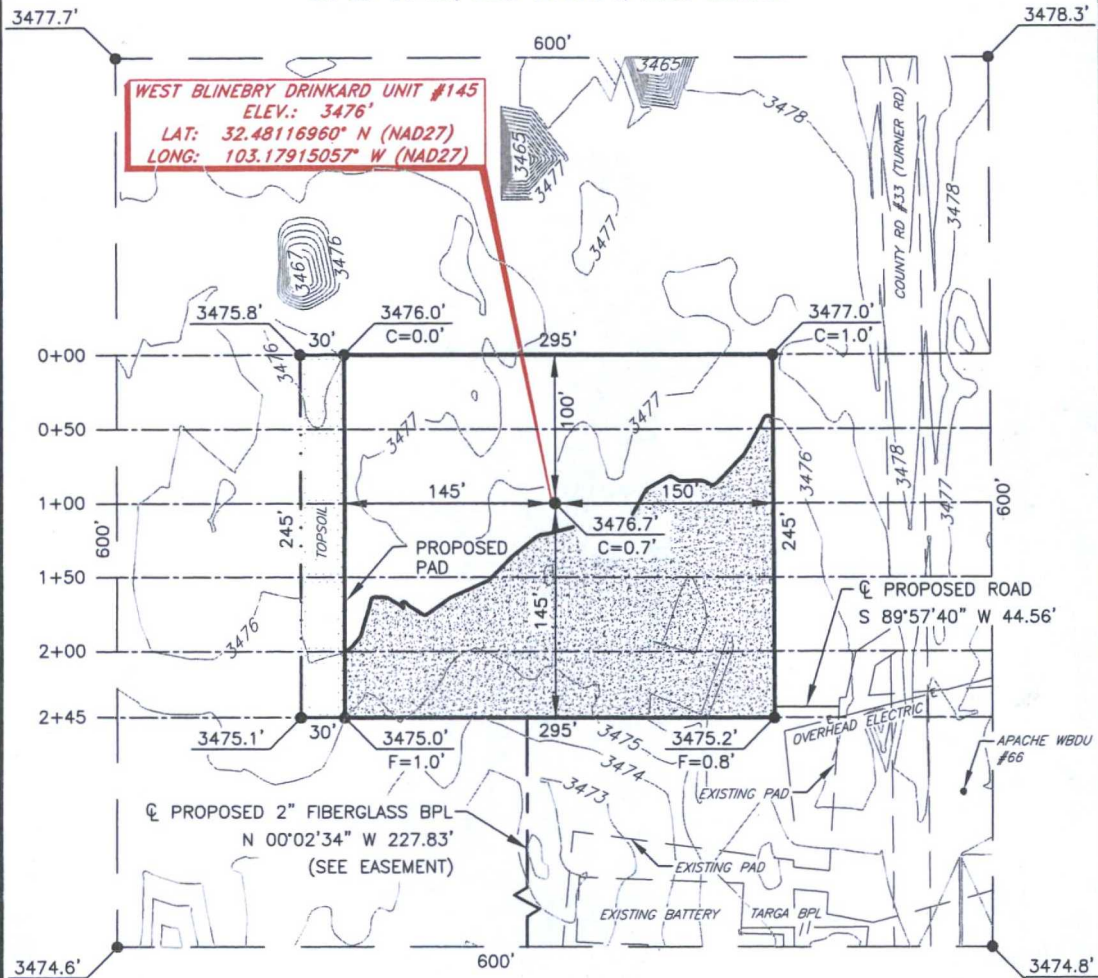
NO.	REVISION	DATE
JOB NO.:	LS1601030	
DWG. NO.:	1601030PAD	

**RRC**

308 W. BROADWAY ST., HOBBS, NM 88240 (575) 964-8200

SCALE: 1" = 100'
DATE: 1-28-2016
SURVEYED BY: ML/CE
DRAWN BY: LPS
APPROVED BY: RMH
SHEET : 1 OF 1

**APACHE CORPORATION**  
**WEST BLINEBRY DRINKARD UNIT #145**  
 (1780' FNL & 940' FEL)  
 SECTION 17, T21S, R37E  
 N. M. P. M., LEA COUNTY, NEW MEXICO



**LEGEND**  
 FILL AREA

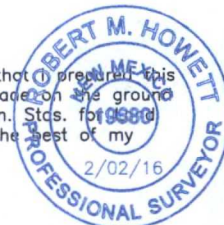
**DIRECTIONS TO LOCATION**

From the intersection of CR-49 (Hill Rd.) and CR-33 (Turner Rd.);  
 Go South on CR-33 approx. 0.9 miles to a lease road on the right;  
 Turn right and go West approx. 240 feet to location on the right.



I, R. M. Howett, a N. M. Professional Surveyor, hereby certify that the foregoing is an unclassified survey of a well location from an actual survey made on the ground under my direct supervision, said survey and plat meet the Min. Stas. for 19680 Surveying in the State of N. M. and are true and correct to the best of my knowledge and belief.

*Robert M. Howett*  
 Robert M. Howett NM PS 19680



Firm No.: TX 10193838 NM 4655451

Copyright 2014 - All Rights Reserved

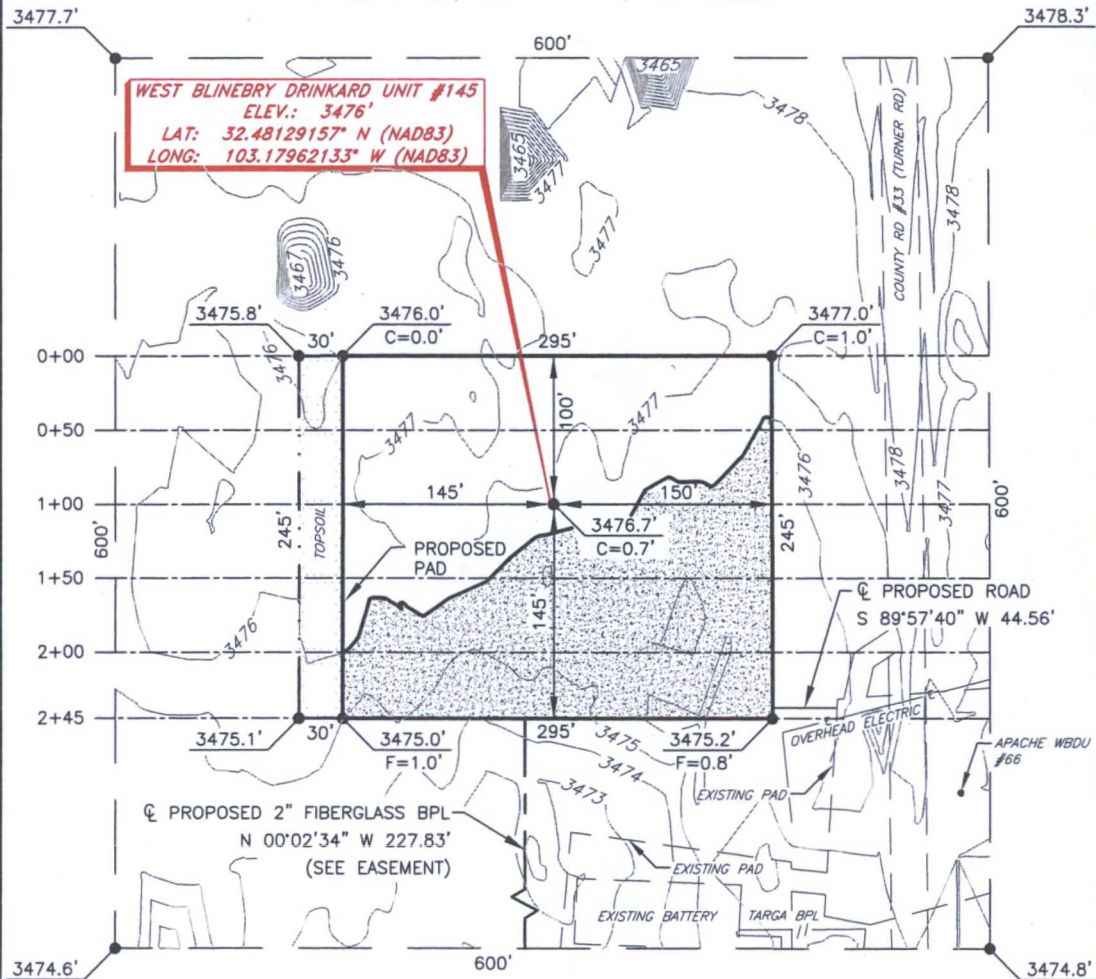
NO.	REVISION	DATE
JOB NO.:	LS1601030	
DWG. NO.:	1601030PAD	

**RRC**

308 W. BROADWAY ST., HOBBS, NM 88240 (575) 964-8200

SCALE: 1" = 100'
DATE: 1-28-2016
SURVEYED BY: ML/CE
DRAWN BY: LPS
APPROVED BY: RMH
SHEET : 1 OF 1

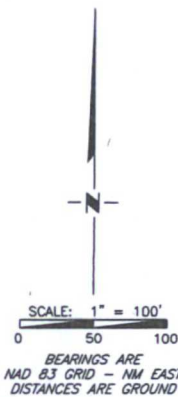
**APACHE CORPORATION**  
**WEST BLINEBRY DRINKARD UNIT #145**  
**(1780' FNL & 940' FEL)**  
**SECTION 17, T21S, R37E**  
**N. M. P. M., LEA COUNTY, NEW MEXICO**



**LEGEND**  
 FILL AREA

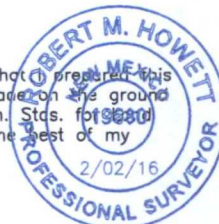
DIRECTIONS TO LOCATION

From the intersection of CR-49 (Hill Rd.) and CR-33 (Turner Rd.):  
 Go South on CR-33 approx. 0.9 miles to a lease road on the right;  
 Turn right and go West approx. 240 feet to location on the right.



I, R. M. Howett, a N. M. Professional Surveyor, hereby certify that I prepared this unclassified survey of a well location from an actual survey made on the ground under my direct supervision, said survey and plat meet the Min. Stas. for 1988 Surveying in the State of N. M. and are true and correct to the best of my knowledge and belief.

*Robert M. Howett*  
 Robert M. Howett NM PS 19680



Firm No.: TX 10193838 NM 4655451

Copyright 2014 - All Rights Reserved

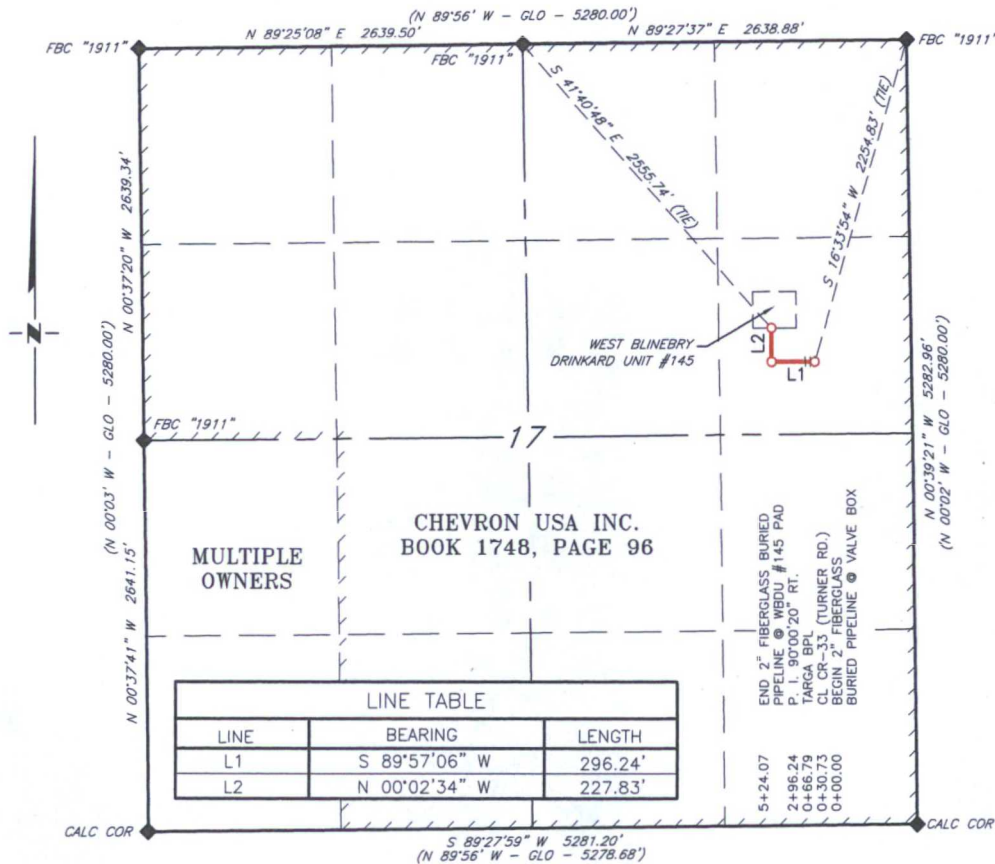
NO.	REVISION	DATE
JOB NO.:	LS1601030	
DWG. NO.:	1601030PAD	

**RRC**

308 W. BROADWAY ST., HOBBS, NM 88240 (575) 964-8200

SCALE: 1" = 100'
DATE: 1-28-2016
SURVEYED BY: ML/CE
DRAWN BY: LPS
APPROVED BY: RMH
SHEET : 1 OF 1

**APACHE CORPORATION**  
**PROPOSED 2" BURIED FIBERGLASS PIPELINE FROM AN EXISTING**  
**VALVE BOX TO THE WEST BLINEBRY DRINKARD UNIT #145**  
**SECTION 17, T21S, R37E,**  
**N. M. P. M., LEA CO., NEW MEXICO**



**DESCRIPTION**

A strip of land 30 feet wide, being 524.07 feet or 31.762 rods in length, lying in Section 17, Township 21 South, Range 37 East, N. M. P. M., Lea County, New Mexico, being 15 feet left and 15 feet right of the following described survey of a centerline across the lands of Chevron USA Inc., according to a deed filed for record in Book 1748, Page 96, of the Deed Records of Lea County, New Mexico:

BEGINNING at Engr. Sta. 0+00.00, a point in the Northeast quarter of Section 17, which bears S 16°33'54" W, 2,254.83 feet, from a brass cap, stamped "1911", found for the Northeast quarter of Section 17;

Thence S 89°57'06" W, 296.24 feet, to Engr. Sta. 2+96.24, a P. I. of 90°00'20" right;

Thence N 00°02'34" W, 227.83 feet, to Engr. Sta. 5+24.07, a point in the Northeast quarter of Section 17, which bears S 41°40'48" E, 2,555.74 feet, from a brass cap, stamped "1911", found for the North quarter corner of Section 17.

Said strip of land contains 0.361 acres, more or less, and is allocated by forties as follows:

SCALE: 1" = 1000'      SE 1/4 NE 1/4      31.762 Rods      0.361 Acres

BEARINGS ARE GRID NAD 27  
 NM EAST  
 DISTANCES ARE HORIZ. GROUND.

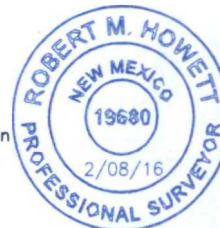
LEGEND  
 ( ) RECORD DATA - GLO  
 FOUND MONUMENT  
 AS NOTED

PROPOSED 2" BURIED  
 FIBERGLASS PIPELINE

Firm No.: TX 10193838 NM 4655451

I, R. M. Howett, a N. M. Professional Surveyor, hereby certify that I prepared this plat from an actual survey made on the ground under my direct supervision, said survey and plat meet the Min. Stds. for Land Surveying in the State of N. M. and are true and correct to the best of my knowledge and belief.

*Robert M. Howett*  
 Robert M. Howett      NM PS 19680

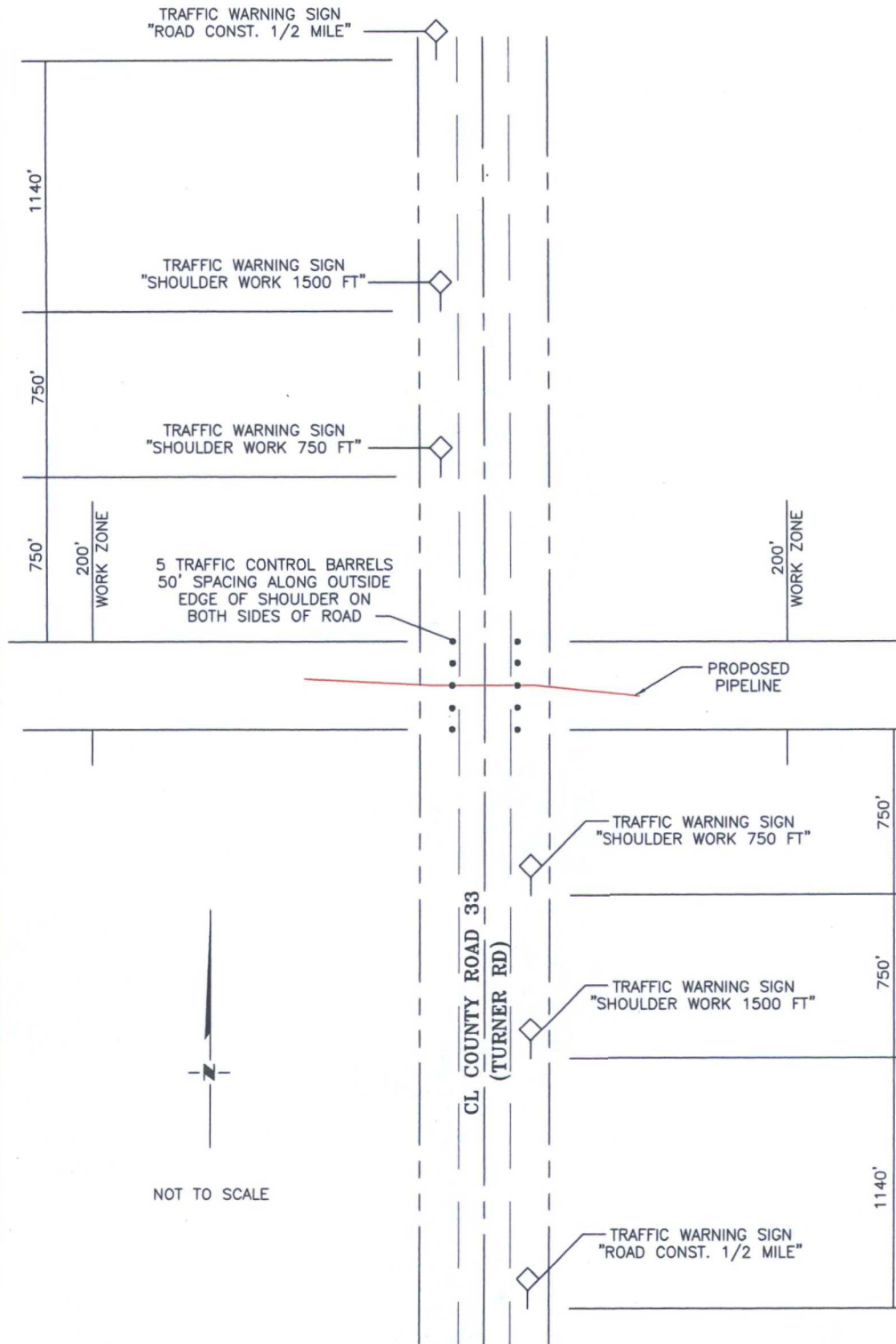


Copyright 2014 - All Rights Reserved

<div style="text-align: center; font-size: 2em; font-weight: bold;">RRC</div>			SCALE: 1" = 1000'		
			DATE: 2-05-2016		
			SURVEYED BY: BC/HD		
			DRAWN BY: LPS		
NO.	REVISION	DATE	APPROVED BY: RMH		
JOB NO.: LS1601030			SHEET: 1 OF 1		
DWG. NO.: 1601030-1			308 W. BROADWAY ST., HOBBS, NM 88240 (575) 964-8200		



**APACHE CORPORATION**  
**Proposed 2" Buried Fiberglass Pipeline**  
**Crossing County Road #33**  
**Section 17, Township 21 South, Range 37 East,**  
**N. M. P. M., Lea County, New Mexico**



Firm No.: TX 10193838 NM 4655451

Copyright 2014 - All Rights Reserved

NO.	REVISION	DATE
JOB NO.:	LS1601030	
DWG. NO.:	1601030TCP	



308 W. BROADWAY ST., HOBBS, NM 88240 (575) 964-8200

SCALE:	N. T. S.
DATE:	2-05-2016
SURVEYED BY:	BC/HD
DRAWN BY:	LPS
APPROVED BY:	RMH
SHEET:	2 of 2