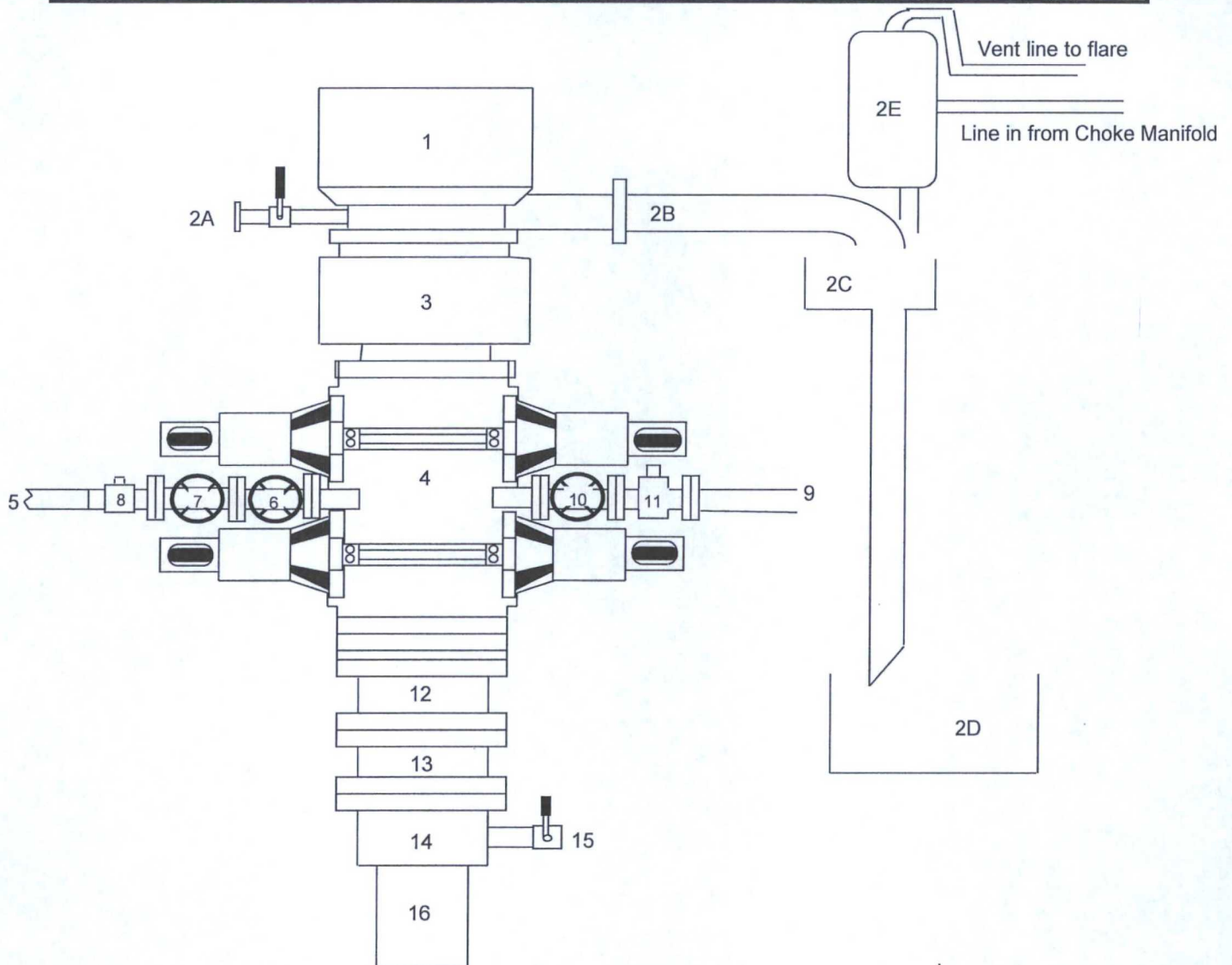


## BLOWOUT PREVENTER ARRANGEMENT

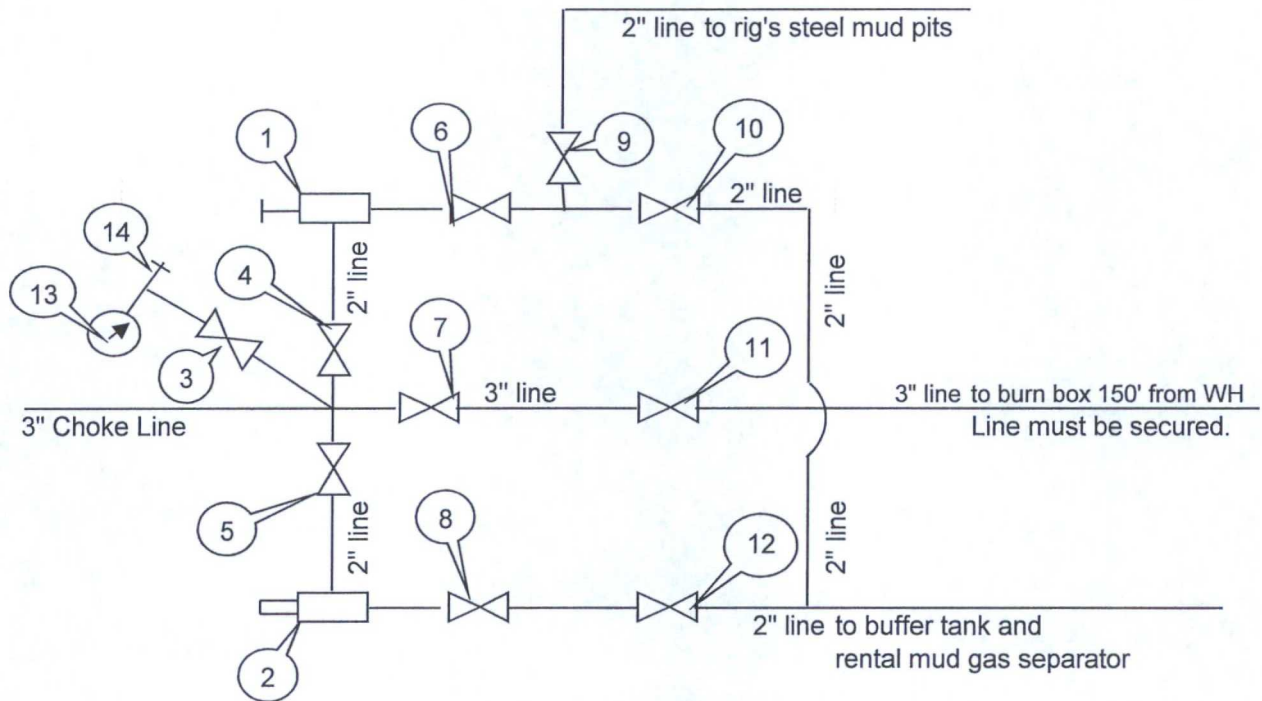
3M System per Onshore Oil and Gas Order No. 2 utilizing 3M and 5M Rated Equipment



Item	Description
1	Rotating Head (11")
2A	Fill up Line and Valve
2B	Flow Line (8")
2C	Shale Shakers and Solids Settling Tank
2D	Cuttings Bins for Zero Discharge
2E	Rental Mud Gas Separator with vent line to flare and return line to mud system
3	Annular BOP (11", 3M)
4	Double Ram (11", 3M, equipped with Blind Rams and Pipe Rams)
5	Kill Line (2" flexible hose, 3000 psi WP)
6	Kill Line Valve, Inner (2-1/16", 3000 psi WP)
7	Kill Line Valve, Outer (2-1/16", 3000 psi WP)
8	Kill Line Check Valve (2-1/16", 3000 psi WP)
9	Straight Choke Line (3" 3000 psi WP)
10	Choke Line Valve, Inner (3-1/8", 3000 psi WP)
11	Choke Line Valve, Outer, (Hydraulically operated, 3-1/8", 3000 psi WP)
12	Spacer Spool (11" 3M x 3M)
13	Adapter Flange (11" 3M x 5M)
14	Casing Head (11" 5M)
15	Ball Valve and Threaded Nipple on Casing Head Outlet, (2", 5M)
16	Surface Casing

## CHOKE MANIFOLD ARRANGEMENT

3M System per Onshore Oil and Gas Order No. 2 utilizing 3M and 5M Equipment



Item	Description
1	Manual Adjustable Choke, 2-1/16", 5M
2	Remote-Controlled Hydraulically-Operated Adjustable Choke, 2-1/16", 10M
3	Gate Valve, 2-1/16" 5M
4	Gate Valve, 2-1/16" 5M
5	Gate Valve, 2-1/16" 5M
6	Gate Valve, 2-1/16" 5M
7	Gate Valve, 3-1/8" 3M
8	Gate Valve, 2-1/16" 5M
9	Gate Valve, 2-1/16" 5M
10	Gate Valve, 2-1/16" 5M
11	Gate Valve, 3-1/8" 3M
12	Gate Valve, 2-1/16" 5M
13	Pressure Gauge
14	2" hammer union tie-in point for BOP Tester

We will test each valve to 3000 psi from the upstream side.

Submitted by:

Cord Denton

Drilling Engineer, Mid-Continent Business Unit, ConocoPhillips Company

Date: 27-April-2015

## Closed Loop System Design, Operating and Maintenance, and Closure Plan

ConocoPhillips Company  
Well: MCA #549  
Location: Section 27, T17S, R32E  
Date: 6/3/2015

ConocoPhillips proposes the following plan for design, operating and maintenance, and closure of our proposed closed loop system for the above named well:

1. We propose to use a closed loop system with steel pits, haul-off bins, and frac tanks for containing all cuttings, solids, mud, water, brine, and liquids. We will not dig a pit, use a drying pad, build an earthen pit above ground level, nor dispose of or bury any waste on location.

All drilling waste and all drilling fluids (fresh water, brine, mud, cuttings, drill solids, cement returns, and any other liquid or solid that may be involved) will be contained on location in the rig's steel pits or in haul-off bins or frac tanks as needed. The intent is as follows:

- We propose to use the rig's steel pits for containing and maintaining the drilling fluids.
- **We propose to remove cuttings and drilled solids from the mud by using solids control equipment and to contain such cuttings and drilled solids on location in haul-off bins.**
- We propose that any excess water that may need to be stored on location will be stored in tanks.

**The closed loop system components will be inspected daily during each tour and any necessary repairs will be made immediately. Any leak in the system will be repaired immediately, any spilled liquids and/or solids will be cleaned immediately, and the area where any such spill occurred will be remediated immediately.**

2. Cuttings and solids will be removed from the location in haul-off bins by an authorized contractor and disposed of at an authorized facility. For this well, we propose the following disposal facility:

R-360 Inc.  
4507 West Carlsbad Hwy, Hobbs, NM 88240,  
P.O. Box 388; Hobbs, New Mexico 88241  
Phone Number: 575.393.1079

The physical address for the plant where the disposal facility is located is Highway 62/180 at mile marker 66 (33 miles East of Hobbs, NM and 32 miles West of Carlsbad, NM).

The Permit Number for R-360 is NM1-006.

A photograph showing the type of haul-off bins that will be used is attached.

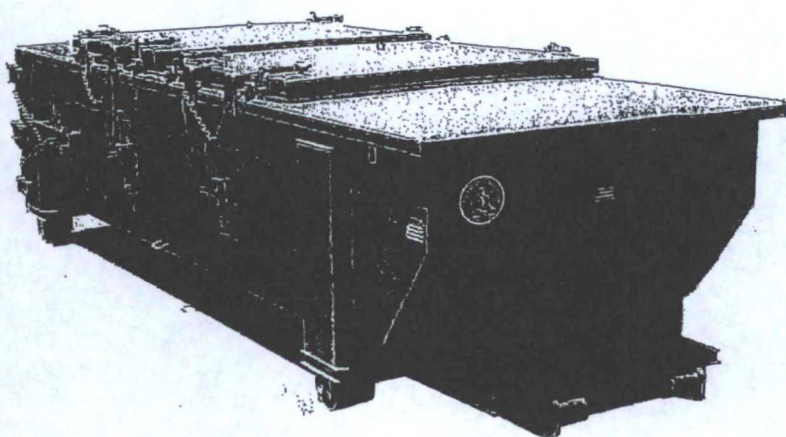
3. Mud will be transported by vacuum truck and disposed of at R-360 Inc. at the facility described above.
4. Fresh Water and Brine will be hauled off by vacuum truck and disposed of at an authorized salt water disposal well. We propose the following for disposal of fresh water and brine as needed:
  - Nabors Well Services Company, 3221 NW County Rd, Hobbs, NM 88240; P.O. Box 5208 Hobbs, NM, 88241, Phone Number: 575.392.2577; Permit SWD 092.
  - Basic Energy Services, 2404 W Texas Ave, Eunice, NM 88231; P.O. Box 1869, Eunice, NM 88231 Phone Number: 575.394.2545, Facility located at Hwy 18, Mile Marker 19; Eunice, NM.
  - C & C Transport, LLC, P.O. Box 1352, Hobbs, NM 88241 Phone Number: 575.393.0422
  - Sundance Services, Inc., P.O. Box 1737 Eunice, NM 88231 Phone Number: 575.394.2511

Cord Denton  
Drilling Engineer, ConocoPhillips Company  
Phone: (281) 206-5406  
Cell: (832) 754-7363

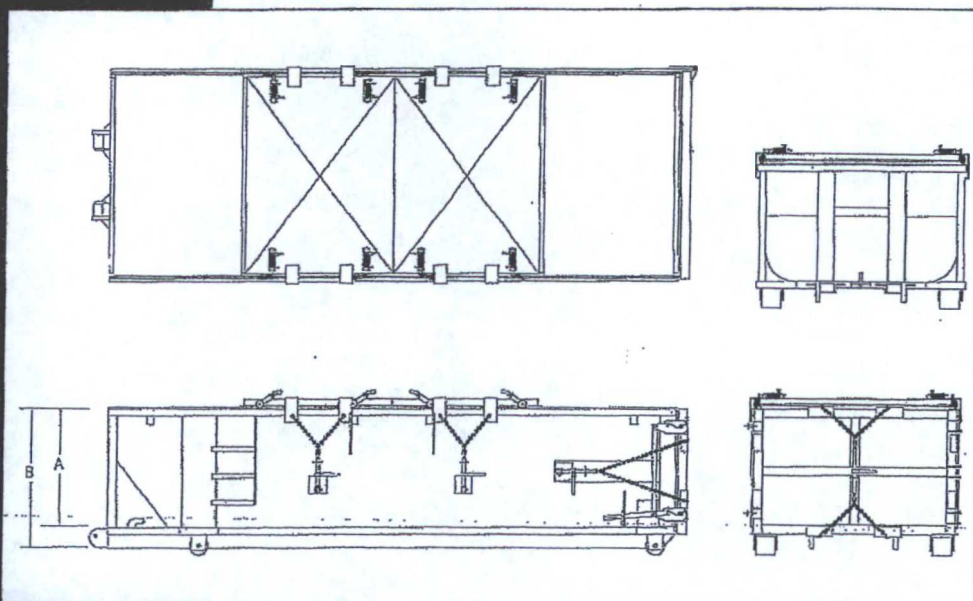
# SPECIFICATIONS

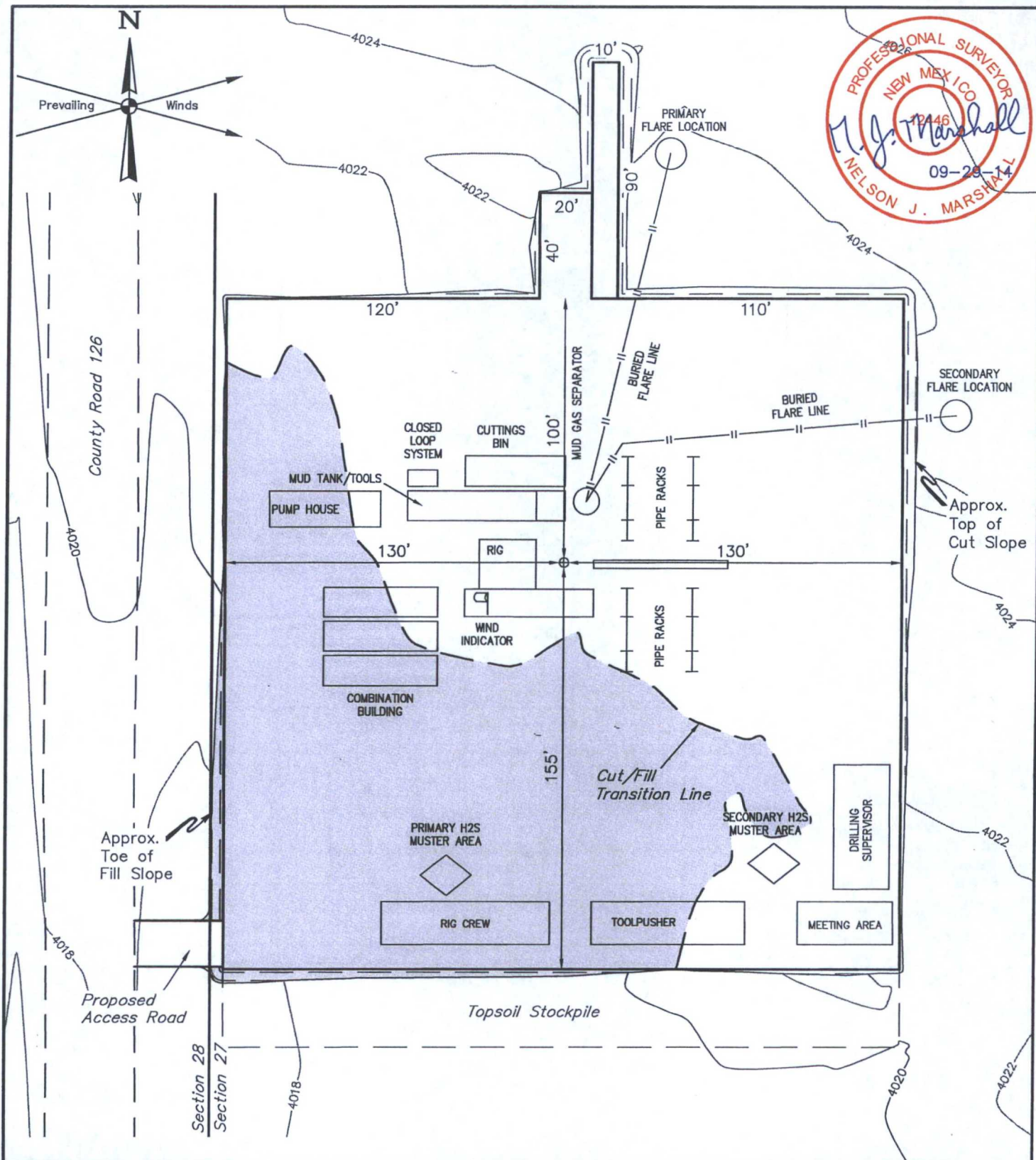
FLOOR: 3/16" PL one piece  
 CROSS MEMBER: 3 x 4.1 channel 16" on center  
 WALLS: 3/16" PL solid welded with tubing top, insi de liner hooks  
 DOOR: 3/16" PL with tubing frame  
 FRONT: 3/16" PL slant formed  
 PICK UP: Standard cable with 2" x 6" x 1/4" rails, gu sset at each crossmember  
 WHEELS: 10 DIA x 9 long with rease fittings  
 DOOR LATCH: 3 Independent ratchet binders with chains, vertical second latch  
 GASKETS: Extruded rubber seal with metal retainers  
 WELDS: All welds continuous except sub-structur e crossmembers  
 FINISH: Coated inside and out with direct to metal, rust inhibiting acrylic enamel color coat  
 HYDROTESTING: Full capacity static test  
 DIMENSIONS: 22'-11" long (21'-8" inside), 99" wide (88" inside), see drawing for height  
 OPTIONS: Steel grit blast and special paint, Ampliroll, Heil and Dino pickup  
 ROOF: 3/16" PL roof panels with tubing and channel support frame  
 LIDS: (2) 68" x 90" metal rolling lids spring loaded, self raising  
 ROLLERS: 4" V-groove rollers with delrin bearings and grease fittings  
 OPENING: (2) 60" x 82" openings with 8" divider centered on container  
 LATCH:(2) independent ratchet binders with chains per lid  
 GASKETS: Extruded rubber seal with metal retainers

## Heavy Duty Split Metal Rolling Lid



CONT.	A	B
20 YD	41	53
25 YD	53	65
30 YD	65	77





#### NOTES:

- Flare pit is to be located a min. of 160' from the wellhead.
- Contours shown at 2' intervals.
- There may be different numbers of pump house and combination buildings on location based on rig used. Flare configuration may differ slightly. Blade and level area may not be needed.

**ConocoPhillips Company**

**MCA UNIT 549  
SECTION 27, T17S, R32E, N.M.P.M.  
847' FNL 135' FWL**

DRAWN BY: S.S.

DATE DRAWN: 09-11-14

SCALE: 1" = 50'

REVISED: 00-00-00

**TYPICAL RIG LAYOUT**

**FIGURE #3**



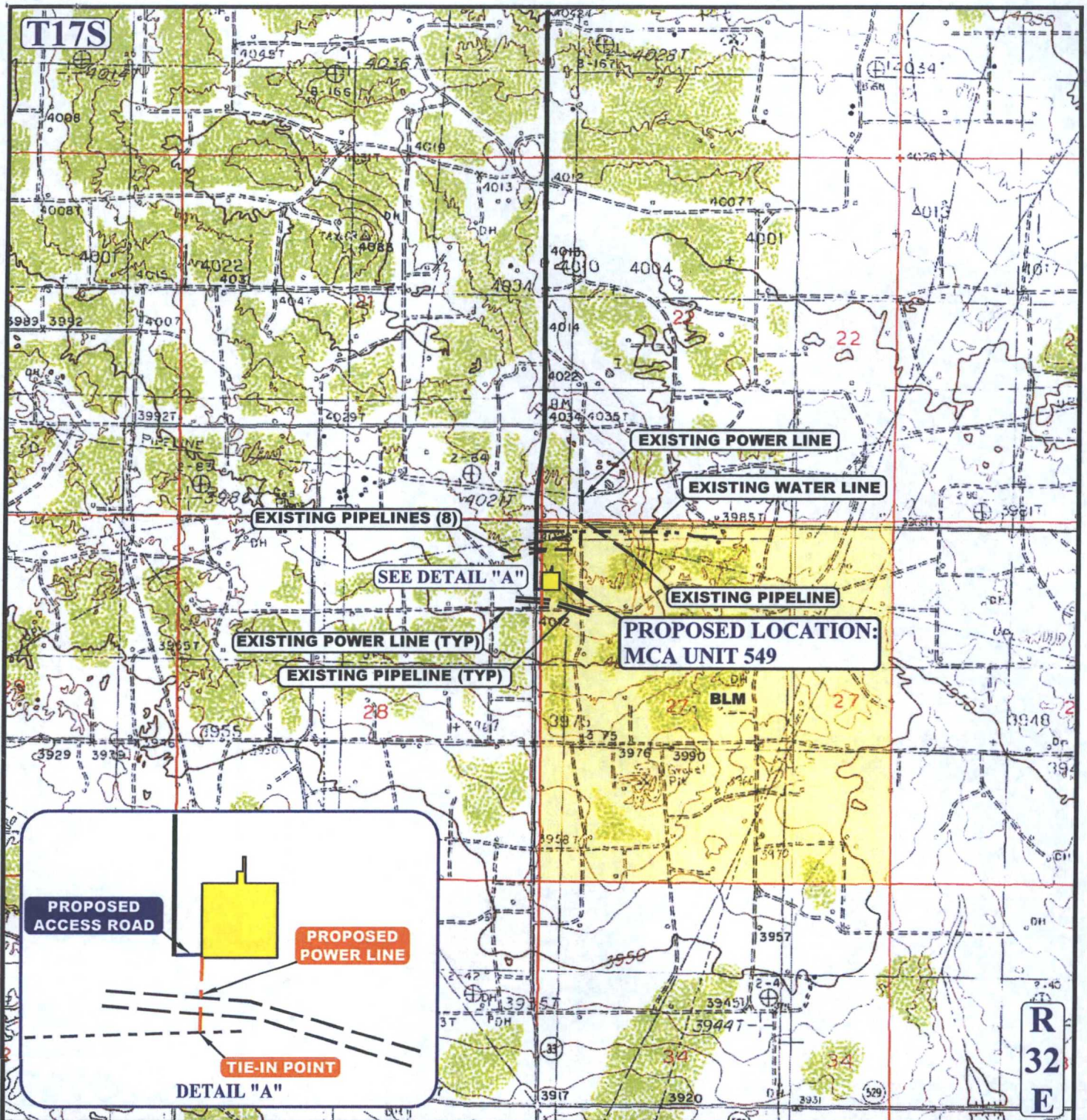
**UELS, LLC**  
Corporate Office \* 85 South 200 East  
Vernal, UT 84078 \* (435) 789-1017

MCA 549 Flowline

**NEED TO RESURVEY SO THE  
LINE GOES TO THE 3B  
Production HEADER**

Length 6,842 Ft maximum  
length  
surveyed est. = 6260'





**APPROXIMATE TOTAL POWER LINE DISTANCE = 261' +/-**

NOTE: PARCEL DATA SHOWN HAS BEEN OBTAINED FROM VARIOUS SOURCES AND SHOULD BE USED FOR MAPPING, GRAPHIC AND PLANNING PURPOSES ONLY. NO WARRANTY IS MADE BY UINTEH ENGINEERING AND LAND SURVEYING (UELS) FOR ACCURACY OF THE PARCEL DATA.

**LEGEND:**

——— EXISTING ROAD  
 - - - PROPOSED ROAD  
 - - - EXISTING POWER LINE  
 - - - PROPOSED POWER LINE  
 - - - EXISTING PIPELINE  
 - - - EXISTING WATER LINE

**ConocoPhillips Company**

**MCA UNIT 549**  
**SECTION 27, T17S, R32E, N.M.P.M.**  
**847' FNL 135' FWL**

DRAWN BY: T.E.	DATE DRAWN: 09-22-14
SCALE: 1" = 2000'	REVISED: 00-00-00

**POWER LINE MAP**

**TOPO E**



**UELS, LLC**  
 Corporate Office \* 85 South 200 East  
 Vernal, UT 84078 \* (435) 789-1017

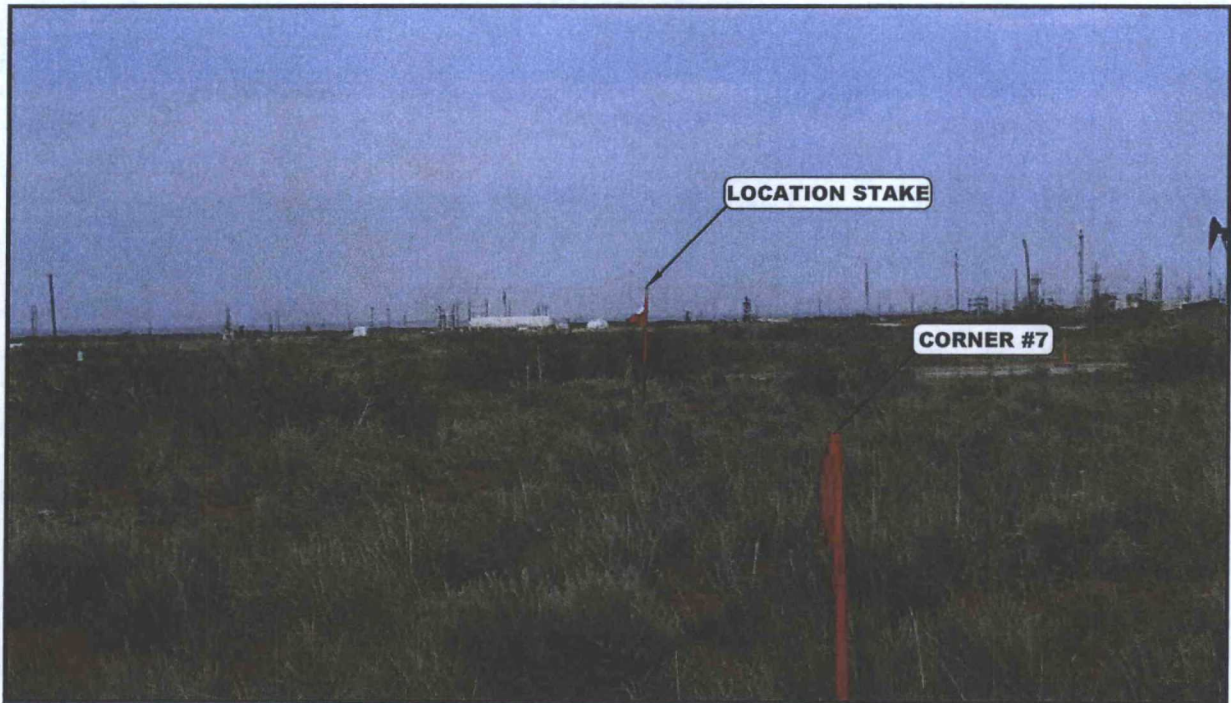


PHOTO: VIEW FROM CORNER #7 TO LOCATION STAKE

CAMERA ANGLE: WESTERLY

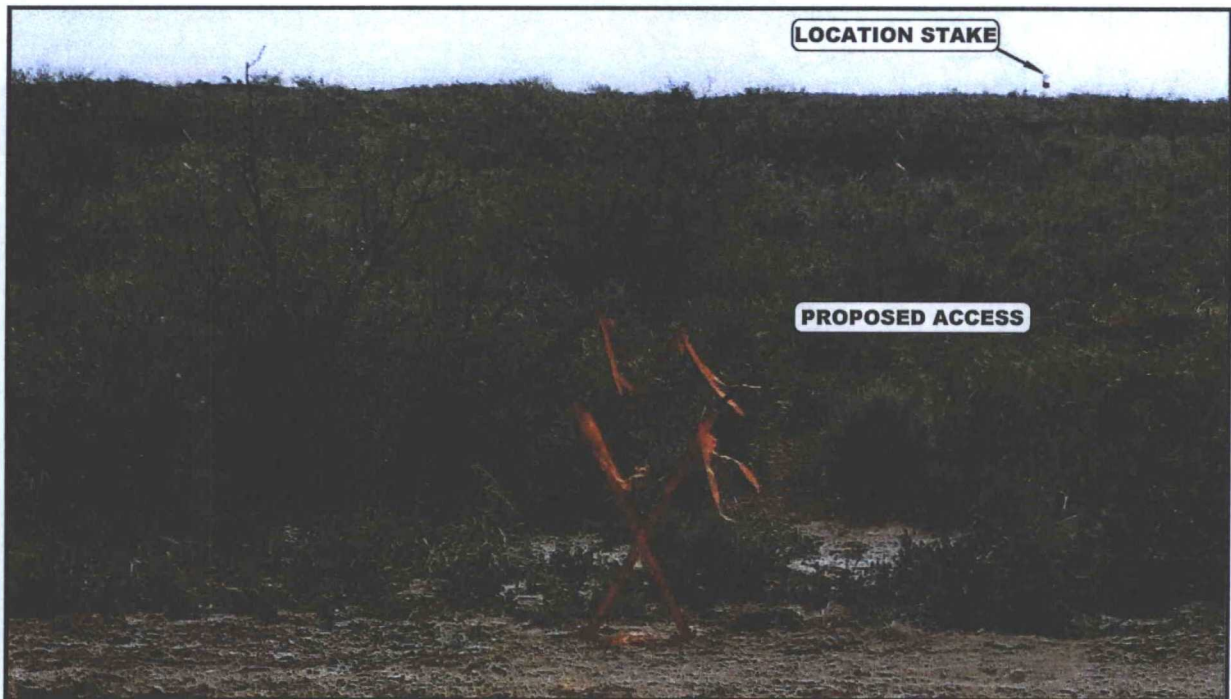


PHOTO: VIEW FROM BEGINNING OF PROPOSED ACCESS

CAMERA ANGLE: EASTERLY

**ConocoPhillips Company**

**MCA UNIT 549  
SECTION 27, T17S, R32E, N.M.P.M.  
847' FNL 135' FWL**



**UELS, LLC**  
Corporate Office \* 85 South 200 East  
Vernal, UT 84078 \* (435) 789-1017

DRAWN BY: T.E.	DATE DRAWN: 09-22-14
TAKEN BY: J.V.	REVISED: 00-00-00
<b>LOCATION PHOTOS</b>	<b>PHOTO</b>