

District I  
1625 N. French Dr., Hobbs, NM 88240  
Phone: (575) 393-6161 Fax: (575) 393-0720  
District II  
811 S. First St., Artesia, NM 88210  
Phone: (575) 748-1283 Fax: (575) 748-9720  
District III  
1000 Rio Brazos Road, Aztec, NM 87410  
Phone: (505) 334-6178 Fax: (505) 334-6170  
District IV  
1220 S. St. Francis Dr., Santa Fe, NM 87505  
Phone: (505) 476-3460 Fax: (505) 476-3462

State of New Mexico  
Energy, Minerals & Natural Resources Department  
OIL CONSERVATION DIVISION  
1220 South St. Francis Dr.  
Santa Fe, NM 87505

Form C-102  
Revised August 1, 2011  
Submit one copy to appropriate  
District Office

JUN 28 2016

☐ AMENDED REPORT

WELL LOCATION AND ACREAGE DEDICATION PLAT

<sup>1</sup> API Number 30-025	<sup>2</sup> Pool Code 97903	<sup>3</sup> Pool Name WC-025 G-08 5253235G; LOWER BS
<sup>4</sup> Property Code 300635	<sup>5</sup> Property Name COTTON DRAW UNIT	<sup>6</sup> Well Number 264H
<sup>7</sup> OGRID No. 6137	<sup>8</sup> Operator Name DEVON ENERGY PRODUCTION COMPANY, L.P.	<sup>9</sup> Elevation 3424.2

<sup>10</sup> Surface Location

UL or lot no.	Section	Township	Range	Lot Idn	Feet from the	North/South line	Feet from the	East/West line	County
A	18	25 S	32 E		75	NORTH	610	EAST	LEA

<sup>11</sup> Bottom Hole Location If Different From Surface

UL or lot no.	Section	Township	Range	Lot Idn	Feet from the	North/South line	Feet from the	East/West line	County
P	18	25 S	32 E		330	SOUTH	660	EAST	LEA

<sup>12</sup> Dedicated Acres	<sup>13</sup> Joint or Infill	<sup>14</sup> Consolidation Code	<sup>15</sup> Order No.
160 ac			

No allowable will be assigned to this completion until all interests have been consolidated or a non-standard unit has been approved by the division.

<p>N89°39'32"E 2658.63 FT</p> <p>NW CORNER SEC. 18 LAT. = 32.1375733°N LONG. = 103.7230046°W NMSP EAST (FT) N = 414320.09 E = 730250.66</p> <p>LOT 1</p>		<p>N89°39'32"E 2658.63 FT</p> <p>NE CORNER SEC. 18 LAT. = 32.1375763°N LONG. = 103.7058302°W NMSP EAST (FT) N = 414351.75 E = 735566.66</p> <p>LOT 2</p>		<p>610'</p>	
<p>W Q CORNER SEC. 18 LAT. = 32.1303174°N LONG. = 103.7230198°W NMSP EAST (FT) N = 411880.47 E = 730260.90</p> <p>LOT 3</p>		<p>NMLC061873A</p> <p>SURFACE LOCATION</p> <p>COTTON DRAW UNIT 264H ELEV. = 3424.2 LAT. = 32.1373699°N (NAD83) LONG. = 103.7078014°W NMSP EAST (FT) N = 414273.11 E = 734956.95</p> <p>LOT 4</p>		<p>610'</p>	
<p>NOTE: LATITUDE AND LONGITUDE COORDINATES ARE SHOWN USING THE NORTH AMERICAN DATUM OF 1983 (NAD83). LISTED NEW MEXICO STATE PLANE EAST COORDINATES ARE GRID (NAD83). BASIS OF BEARING AND DISTANCES USED ARE NEW MEXICO STATE PLANE EAST COORDINATES MODIFIED TO THE SURFACE.</p>		<p>NMLC061873B</p> <p>BOTTOM OF HOLE LAT. = 32.1239835°N LONG. = 103.7080291°W NMSP EAST (FT) N = 409402.93 E = 734914.74</p> <p>LOT 5</p>		<p>660'</p>	
<p>SW CORNER SEC. 18 LAT. = 32.1230600°N LONG. = 103.7230339°W NMSP EAST (FT) N = 409040.33 E = 730271.48</p> <p>LOT 6</p>		<p>S Q CORNER SEC. 18 LAT. = 32.1230778°N LONG. = 103.7144835°W NMSP EAST (FT) N = 409061.90 E = 732918.48</p> <p>LOT 7</p>		<p>SE CORNER SEC. 18 LAT. = 32.1230761°N LONG. = 103.7059029°W NMSP EAST (FT) N = 409076.66 E = 735574.89</p> <p>LOT 8</p>	
<p>S89°31'59"W 2647.67 FT</p>		<p>S89°40'54"W 2657.03 FT</p>		<p>5007'42"E 2639.13 FT</p> <p>5007'02"E 2637.12 FT</p>	

**17 OPERATOR CERTIFICATION**  
I hereby certify that the information contained herein is true and complete to the best of my knowledge and belief, and that this organization either owns a working interest or unleased mineral interest in the land including the proposed bottom hole location or has a right to drill this well at this location pursuant to a contract with an owner of such a mineral or working interest, or to a voluntary pooling agreement or a compulsory pooling order heretofore entered by the division.

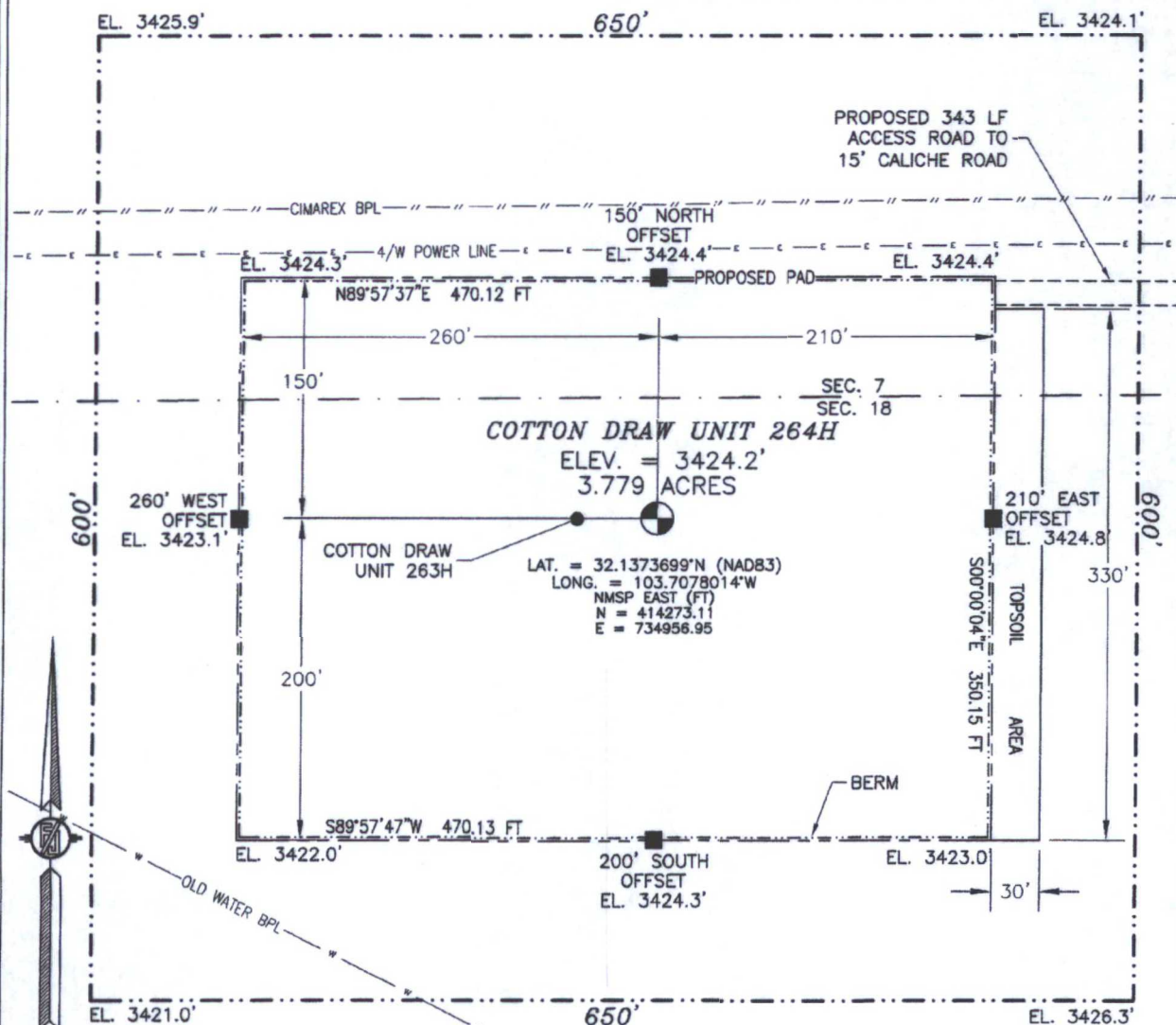
Signature: *Trina C. Couch* Date: *11/14/14*  
Trina C. Couch, Regulatory Analyst  
Printed Name: \_\_\_\_\_  
trina.couch@dmn.com  
E-mail Address: \_\_\_\_\_

**18 SURVEYOR CERTIFICATION**  
I hereby certify that the well location shown on this plat was plotted from field notes of actual surveys made by me or under my supervision, and that the same is true and correct to the best of my belief.

AUGUST 8, 2014  
Date of Survey: \_\_\_\_\_  
Signature and Seal of Professional Surveyor: *[Signature]*  
Certificate Number: PL 12797, 12798, 12799, 12800, 12801, 12802, 12803, 12804, 12805, 12806, 12807, 12808, 12809, 12810, 12811, 12812, 12813, 12814, 12815, 12816, 12817, 12818, 12819, 12820, 12821, 12822, 12823, 12824, 12825, 12826, 12827, 12828, 12829, 12830, 12831, 12832, 12833, 12834, 12835, 12836, 12837, 12838, 12839, 12840, 12841, 12842, 12843, 12844, 12845, 12846, 12847, 12848, 12849, 12850, 12851, 12852, 12853, 12854, 12855, 12856, 12857, 12858, 12859, 12860, 12861, 12862, 12863, 12864, 12865, 12866, 12867, 12868, 12869, 12870, 12871, 12872, 12873, 12874, 12875, 12876, 12877, 12878, 12879, 12880, 12881, 12882, 12883, 12884, 12885, 12886, 12887, 12888, 12889, 12890, 12891, 12892, 12893, 12894, 12895, 12896, 12897, 12898, 12899, 12900, 12901, 12902, 12903, 12904, 12905, 12906, 12907, 12908, 12909, 12910, 12911, 12912, 12913, 12914, 12915, 12916, 12917, 12918, 12919, 12920, 12921, 12922, 12923, 12924, 12925, 12926, 12927, 12928, 12929, 12930, 12931, 12932, 12933, 12934, 12935, 12936, 12937, 12938, 12939, 12940, 12941, 12942, 12943, 12944, 12945, 12946, 12947, 12948, 12949, 12950, 12951, 12952, 12953, 12954, 12955, 12956, 12957, 12958, 12959, 12960, 12961, 12962, 12963, 12964, 12965, 12966, 12967, 12968, 12969, 12970, 12971, 12972, 12973, 12974, 12975, 12976, 12977, 12978, 12979, 12980, 12981, 12982, 12983, 12984, 12985, 12986, 12987, 12988, 12989, 12990, 12991, 12992, 12993, 12994, 12995, 12996, 12997, 12998, 12999, 13000, 13001, 13002, 13003, 13004, 13005, 13006, 13007, 13008, 13009, 13010, 13011, 13012, 13013, 13014, 13015, 13016, 13017, 13018, 13019, 13020, 13021, 13022, 13023, 13024, 13025, 13026, 13027, 13028, 13029, 13030, 13031, 13032, 13033, 13034, 13035, 13036, 13037, 13038, 13039, 13040, 13041, 13042, 13043, 13044, 13045, 13046, 13047, 13048, 13049, 13050, 13051, 13052, 13053, 13054, 13055, 13056, 13057, 13058, 13059, 13060, 13061, 13062, 13063, 13064, 13065, 13066, 13067, 13068, 13069, 13070, 13071, 13072, 13073, 13074, 13075, 13076, 13077, 13078, 13079, 13080, 13081, 13082, 13083, 13084, 13085, 13086, 13087, 13088, 13089, 13090, 13091, 13092, 13093, 13094, 13095, 13096, 13097, 13098, 13099, 13100, 13101, 13102, 13103, 13104, 13105, 13106, 13107, 13108, 13109, 13110, 13111, 13112, 13113, 13114, 13115, 13116, 13117, 13118, 13119, 13120, 13121, 13122, 13123, 13124, 13125, 13126, 13127, 13128, 13129, 13130, 13131, 13132, 13133, 13134, 13135, 13136, 13137, 13138, 13139, 13140, 13141, 13142, 13143, 13144, 13145, 13146, 13147, 13148, 13149, 13150, 13151, 13152, 13153, 13154, 13155, 13156, 13157, 13158, 13159, 13160, 13161, 13162, 13163, 13164, 13165, 13166, 13167, 13168, 13169, 13170, 13171, 13172, 13173, 13174, 13175, 13176, 13177, 13178, 13179, 13180, 13181, 13182, 13183, 13184, 13185, 13186, 13187, 13188, 13189, 13190, 13191, 13192, 13193, 13194, 13195, 13196, 13197, 13198, 13199, 13200, 13201, 13202, 13203, 13204, 13205, 13206, 13207, 13208, 13209, 13210, 13211, 13212, 13213, 13214, 13215, 13216, 13217, 13218, 13219, 13220, 13221, 13222, 13223, 13224, 13225, 13226, 13227, 13228, 13229, 13230, 13231, 13232, 13233, 13234, 13235, 13236, 13237, 13238, 13239, 13240, 13241, 13242, 13243, 13244, 13245, 13246, 13247, 13248, 13249, 13250, 13251, 13252, 13253, 13254, 13255, 13256, 13257, 13258, 13259, 13260, 13261, 13262, 13263, 13264, 13265, 13266, 13267, 13268, 13269, 13270, 13271, 13272, 13273, 13274, 13275, 13276, 13277, 13278, 13279, 13280, 13281, 13282, 13283, 13284, 13285, 13286, 13287, 13288, 13289, 13290, 13291, 13292, 13293, 13294, 13295, 13296, 13297, 13298, 13299, 13300, 13301, 13302, 13303, 13304, 13305, 13306, 13307, 13308, 13309, 13310, 13311, 13312, 13313, 13314, 13315, 13316, 13317, 13318, 13319, 13320, 13321, 13322, 13323, 13324, 13325, 13326, 13327, 13328, 13329, 13330, 13331, 13332, 13333, 13334, 13335, 13336, 13337, 13338, 13339, 13340, 13341, 13342, 13343, 13344, 13345, 13346, 13347, 13348, 13349, 13350, 13351, 13352, 13353, 13354, 13355, 13356, 13357, 13358, 13359, 13360, 13361, 13362, 13363, 13364, 13365, 13366, 13367, 13368, 13369, 13370, 13371, 13372, 13373, 13374, 13375, 13376, 13377, 13378, 13379, 13380, 13381, 13382, 13383, 13384, 13385, 13386, 13387, 13388, 13389, 13390, 13391, 13392, 13393, 13394, 13395, 13396, 13397, 13398, 13399, 13400, 13401, 13402, 13403, 13404, 13405, 13406, 13407, 13408, 13409, 13410, 13411, 13412, 13413, 13414, 13415, 13416, 13417, 13418, 13419, 13420, 13421, 13422, 13423, 13424, 13425, 13426, 13427, 13428, 13429, 13430, 13431, 13432, 13433, 13434, 13435, 13436, 13437, 13438, 13439, 13440, 13441, 13442, 13443, 13444, 13445, 13446, 13447, 13448, 13449, 13450, 13451, 13452, 13453, 13454, 13455, 13456, 13457, 13458, 13459, 13460, 13461, 13462, 13463, 13464, 13465, 13466, 13467, 13468, 13469, 13470, 13471, 13472, 13473, 13474, 13475, 13476, 13477, 13478, 13479, 13480, 13481, 13482, 13483, 13484, 13485, 13486, 13487, 13488, 13489, 13490, 13491, 13492, 13493, 13494, 13495, 13496, 13497, 13498, 13499, 13500, 13501, 13502, 13503, 13504, 13505, 13506, 13507, 13508, 13509, 13510, 13511, 13512, 13513, 13514, 13515, 13516, 13517, 13518, 13519, 13520, 13521, 13522, 13523, 13524, 13525, 13526, 13527, 13528, 13529, 13530, 13531, 13532, 13533, 13534, 13535, 13536, 13537, 13538, 13539, 13540, 13541, 13542, 13543, 13544, 13545, 13546, 13547, 13548, 13549, 13550, 13551, 13552, 13553, 13554, 13555, 13556, 13557, 13558, 13559, 13560, 13561, 13562, 13563, 13564, 13565, 13566, 13567, 13568, 13569, 13570, 13571, 13572, 13573, 13574, 13575, 13576, 13577, 13578, 13579, 13580, 13581, 13582, 13583, 13584, 13585, 13586, 13587, 13588, 13589, 13590, 13591, 13592, 13593, 13594, 13595, 13596, 13597, 13598, 13599, 13600, 13601, 13602, 13603, 13604, 13605, 13606, 13607, 13608, 13609, 13610, 13611, 13612, 13613, 13614, 13615, 13616, 13617, 13618, 13619, 13620, 13621, 13622, 13623, 13624, 13625, 13626, 13627, 13628, 13629, 13630, 13631, 13632, 13633, 13634, 13635, 13636, 13637, 13638, 13639, 13640, 13641, 13642, 13643, 13644, 13645, 13646, 13647, 13648, 13649, 13650, 13651, 13652, 13653, 13654, 13655, 13656, 13657, 13658, 13659, 13660, 13661, 13662, 13663, 13664, 13665, 13666, 13667, 13668, 13669, 13670, 13671, 13672, 13673, 13674, 13675, 13676, 13677, 13678, 13679, 13680, 13681, 13682, 13683, 13684, 13685, 13686, 13687, 13688, 13689, 13690, 13691, 13692, 13693, 13694, 13695, 13696, 13697, 13698, 13699, 13700, 13701, 13702, 13703, 13704, 13705, 13706, 13707, 13708, 13709, 13710, 13711, 13712, 13713, 13714, 13715, 13716, 13717, 13718, 13719, 13720, 13721, 13722, 13723, 13724, 13725, 13726, 13727, 13728, 13729, 13730, 13731, 13732, 13733, 13734, 13735, 13736, 13737, 13738, 13739, 13740, 13741, 13742, 13743, 13744, 13745, 13746, 13747, 13748, 13749, 13750, 13751, 13752, 13753, 13754, 13755, 13756, 13757, 13758, 13759, 13760, 13761, 13762, 13763, 13764, 13765, 13766, 13767, 13768, 13769, 13770, 13771, 13772, 13773, 13774, 13775, 13776, 13777, 13778, 13779, 13780, 13781, 13782, 13783, 13784, 13785, 13786, 13787, 13788, 13789, 13790, 13791, 13792, 13793, 13794, 13795, 13796, 13797, 13798, 13799, 13800, 13801, 13802, 13803, 13804, 13805, 13806, 13807, 13808, 13809, 13810, 13811, 13812, 13813, 13814, 13815, 13816, 13817, 13818, 13819, 13820, 13821, 13822, 13823, 13824, 13825, 13826, 13827, 13828, 13829, 13830, 13831, 13832, 13833, 13834, 13835, 13836, 13837, 13838, 13839, 13840, 13841, 13842, 13843, 13844, 13845, 13846, 13847, 13848, 13849, 13850, 13851, 13852, 13853, 13854, 13855, 13856, 13857, 13858, 13859, 13860, 13861, 13862, 13863, 13864, 13865, 13866, 13867, 13868, 13869, 13870, 13871, 13872, 13873, 13874, 13875, 13876, 13877, 13878, 13879, 13880, 13881, 13882, 13883, 13884, 13885, 13886, 13887, 13888, 13889, 13890, 13891, 13892, 13893, 13894, 13895, 13896, 13897, 13898, 13899, 13900, 13901, 13902, 13903, 13904, 13905, 13906, 13907, 13908, 13909, 13910, 13911, 13912, 13913, 13914, 13915, 13916, 13917, 13918, 13919, 13920, 13921, 13922, 13923, 13924, 13925, 13926, 13927, 13928, 13929, 13930, 13931, 13932, 13933, 13934, 13935, 13936, 13937, 13938, 13939, 13940, 13941, 13942, 13943, 13944, 13945, 13946, 13947, 13948, 13949, 13950, 13951, 13952, 13953, 13954, 13955, 13956, 13957, 13958, 13959, 13960, 13961, 13962, 13963, 13964, 13965, 13966, 13967, 13968, 13969, 13970, 13971, 13972, 13973, 13974, 13975, 13976, 13977, 13978, 13979, 13980, 13981, 13982, 13983, 13984, 13985, 13986, 13987, 13988, 13989, 13990, 13991, 13992, 13993, 13994, 13995, 13996, 13997, 13998, 13999, 14000, 14001, 14002, 14003, 14004, 14005, 14006, 14007, 14008, 14009, 14010, 14011, 14012, 14013, 14014, 14015, 14016, 14017, 14018, 14019, 14020, 14021, 14022, 14023, 14024, 14025, 14026, 14027, 14028, 14029, 14030, 14031, 14032, 14033, 14034, 14035, 14036, 14037, 14038, 14039, 14040, 14041, 14042, 14043, 14044, 14045, 14046, 14047, 14048, 14049, 14050, 14051, 14052, 14053, 14054, 14055, 14056, 14057, 14058, 14059, 14060, 14061, 14062, 14063, 14064, 14065, 14066, 14067, 14068, 14069, 14070, 14071, 14072, 14073, 14074, 14075, 14076, 14077, 14078, 14079, 14080, 14081, 14082, 14083, 14084, 14085, 14086, 14087, 14088, 14089, 14090, 14091, 14092, 14093, 14094, 14095, 14096, 14097, 14098, 14099, 14100, 14101, 14102, 14103, 14104, 14105, 14106, 14107, 14108, 14109, 14110, 14111, 14112, 14113, 14114, 14115, 1

SECTION 18, TOWNSHIP 25 SOUTH, RANGE 32 EAST, N.M.P.M.  
LEA COUNTY, STATE OF NEW MEXICO  
**SITE MAP**

NOTE: LATITUDE AND LONGITUDE COORDINATES ARE SHOWN USING THE NORTH AMERICAN DATUM OF 1983 (NAD83). LISTED NEW MEXICO STATE PLANE EAST COORDINATES ARE GRID (NAD83). BASIS OF BEARING AND DISTANCES USED ARE NEW MEXICO STATE PLANE EAST COORDINATES MODIFIED TO THE SURFACE



010 50 100 200

SCALE 1" = 100'  
DIRECTIONS TO LOCATION

FROM STATE HIGHWAY 128 AND CR 1 (ORLA ROAD) GO SOUTH ON CR 1 FOR 6.3 MILES, TURN RIGHT ON CALICHE ROAD (MONSANTO ROAD) AND GO WEST 2.1 MILES, TURN RIGHT AND GO NORTH 0.75 MILES, BEND LEFT AND GO WEST 150', TURN RIGHT AND GO NORTH 855' TO A PROPOSED ROAD SURVEY AND FOLLOW FLAGS WEST 343' TO THE PROPOSED NORTHEAST CORNER OF PAD FOR THIS LOCATION.

DEVON ENERGY PRODUCTION COMPANY, L.P.  
**COTTON DRAW UNIT 264H**  
LOCATED 75 FT. FROM THE NORTH LINE  
AND 610 FT. FROM THE EAST LINE OF  
SECTION 18, TOWNSHIP 25 SOUTH,  
RANGE 32 EAST, N.M.P.M.  
LEA COUNTY, STATE OF NEW MEXICO

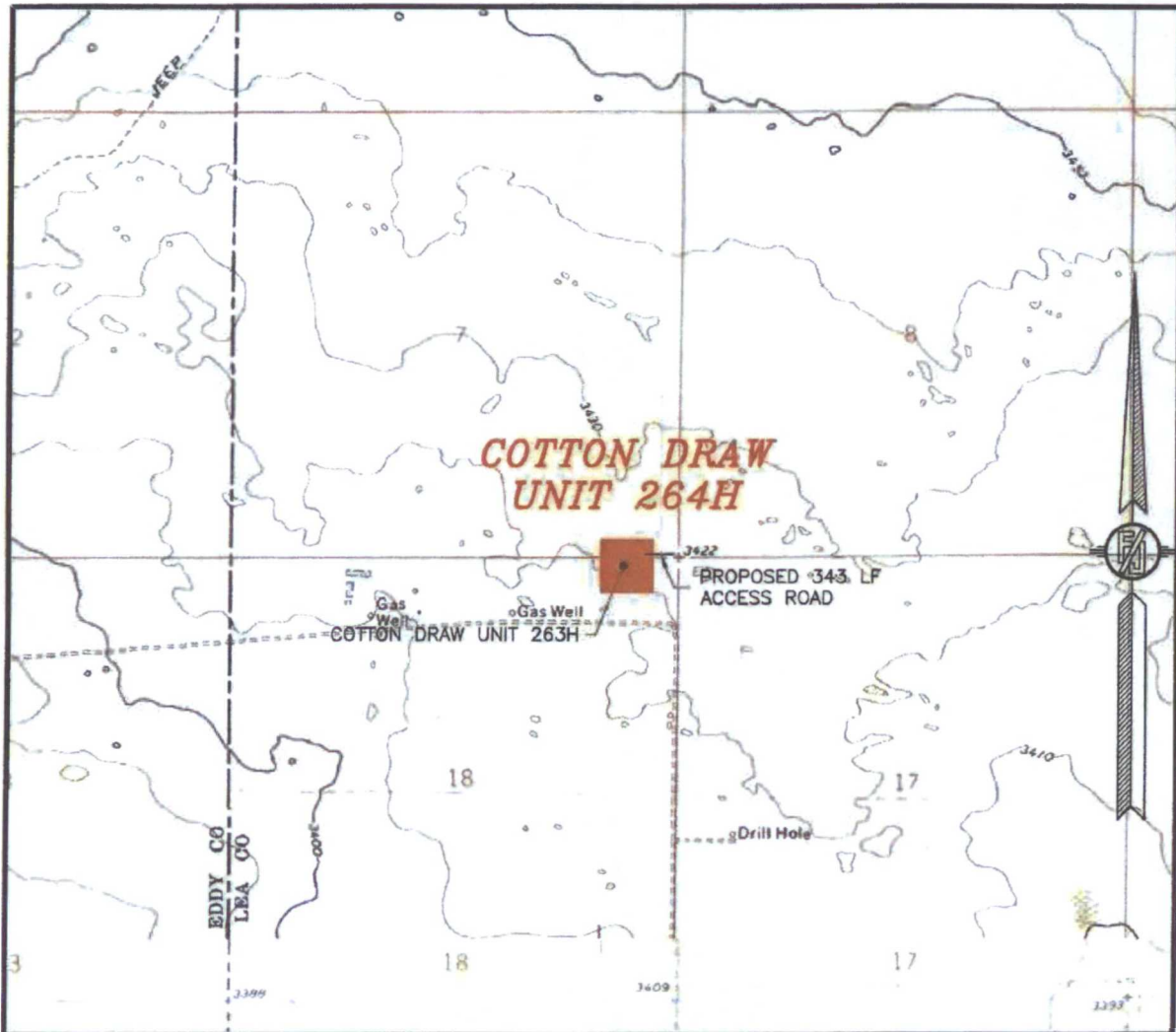
AUGUST 8, 2014

SURVEY NO. 3181

MADRON SURVEYING, INC. 301 SOUTH CANAL (575) 234-3341 CARLSBAD, NEW MEXICO



SECTION 18, TOWNSHIP 25 SOUTH, RANGE 32 EAST, N.M.P.M.  
LEA COUNTY, STATE OF NEW MEXICO  
**LOCATION VERIFICATION MAP**



USGS QUAD MAP:  
PADUCA BREAKS NW

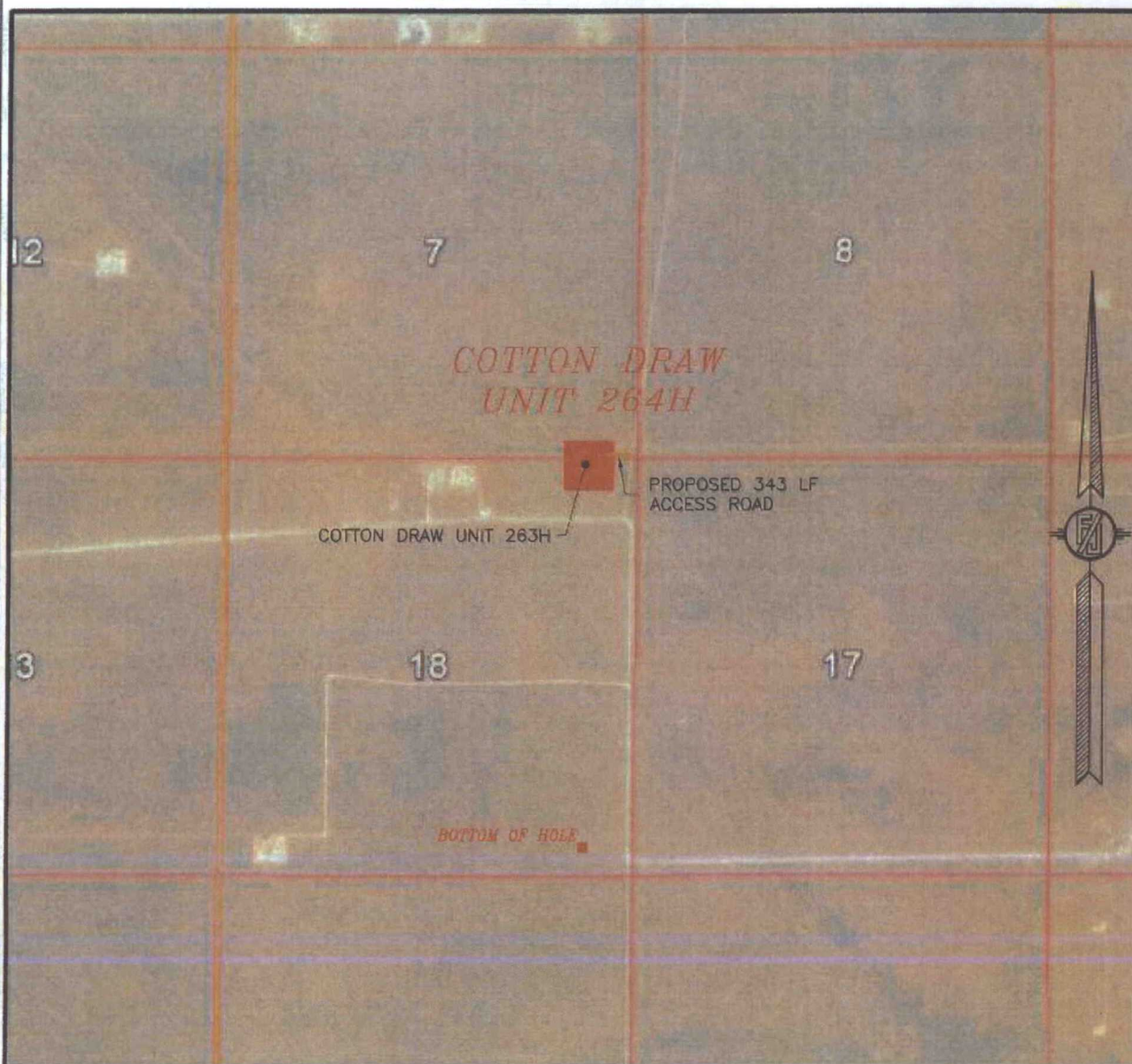
NOT TO SCALE

DEVON ENERGY PRODUCTION COMPANY, L.P.  
**COTTON DRAW UNIT 264H**  
LOCATED 75 FT. FROM THE NORTH LINE  
AND 610 FT. FROM THE EAST LINE OF  
SECTION 18, TOWNSHIP 25 SOUTH,  
RANGE 32 EAST, N.M.P.M.  
LEA COUNTY, STATE OF NEW MEXICO

AUGUST 8, 2014

MADRON SURVEYING, INC. 301 SOUTH CANAL CARLSBAD, NEW MEXICO  
(575) 234-3341 SURVEY NO. 3181

SECTION 18, TOWNSHIP 25 SOUTH, RANGE 32 EAST, N.M.P.M.  
LEA COUNTY, STATE OF NEW MEXICO  
**AERIAL PHOTO**



NOT TO SCALE  
AERIAL PHOTO:  
GOOGLE EARTH  
APRIL 2013

**DEVON ENERGY PRODUCTION COMPANY, L.P.**  
**COTTON DRAW UNIT 264H**  
LOCATED 75 FT. FROM THE NORTH LINE  
AND 610 FT. FROM THE EAST LINE OF  
SECTION 18, TOWNSHIP 25 SOUTH,  
RANGE 32 EAST, N.M.P.M.  
LEA COUNTY, STATE OF NEW MEXICO

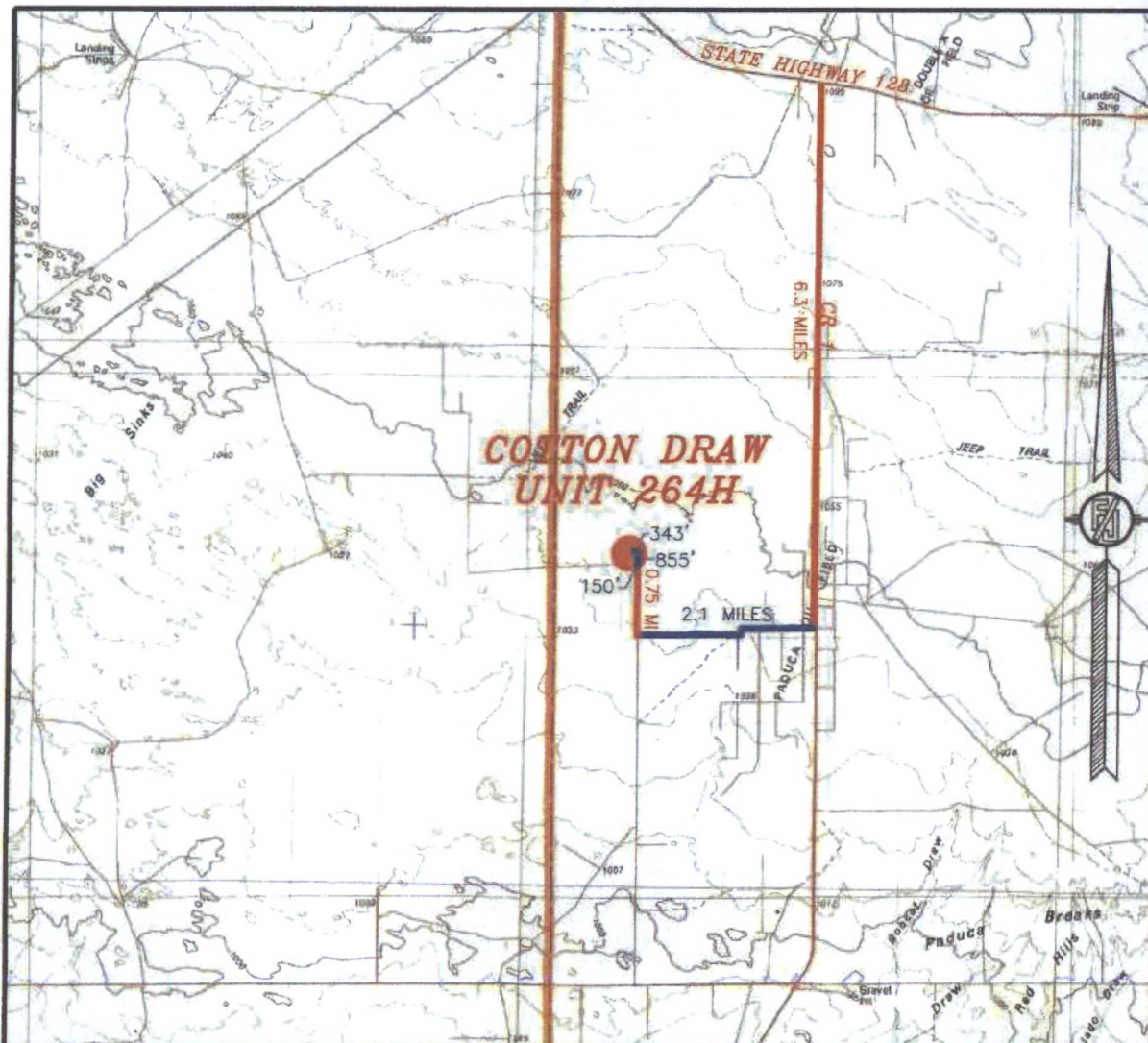
AUGUST 8, 2014

SURVEY NO. 3181

MADRON SURVEYING, INC. 301 SOUTH CANAL (575) 234-3341 CARLSBAD, NEW MEXICO



SECTION 18, TOWNSHIP 25 SOUTH, RANGE 32 EAST, N.M.P.M.  
LEA COUNTY, STATE OF NEW MEXICO  
VICINITY MAP



DISTANCES IN MILES

NOT TO SCALE

DEVON ENERGY PRODUCTION COMPANY, L.P.  
COTTON DRAW UNIT 264H

LOCATED 75 FT. FROM THE NORTH LINE  
AND 610 FT. FROM THE EAST LINE OF  
SECTION 18, TOWNSHIP 25 SOUTH,  
RANGE 32 EAST, N.M.P.M.  
LEA COUNTY, STATE OF NEW MEXICO

DIRECTIONS TO LOCATION

FROM STATE HIGHWAY 128 AND CR 1 (ORLA ROAD) GO SOUTH ON CR 1 FOR 6.3 MILES, TURN RIGHT ON CALICHE ROAD (MONSANTO ROAD) AND GO WEST 2.1 MILES, TURN RIGHT AND GO NORTH 0.75 MILES, BEND LEFT AND GO WEST 150', TURN RIGHT AND GO NORTH 855' TO A PROPOSED ROAD SURVEY AND FOLLOW FLAGS WEST 343' TO THE PROPOSED NORTHEAST CORNER OF PAD FOR THIS LOCATION.

AUGUST 8, 2014

MADRON SURVEYING, INC.

301 SOUTH CANAL  
(575) 234-3341

CARLSBAD, NEW MEXICO

SURVEY NO. 3181



# ACCESS AERIAL ROUTE MAP



## COTTON DRAW UNIT 264H

AUGUST 8, 2014

**MADRON SURVEYING, INC.** 301 SOUTH CANAL (575) 234-3341 **CARLSBAD, NEW MEXICO**

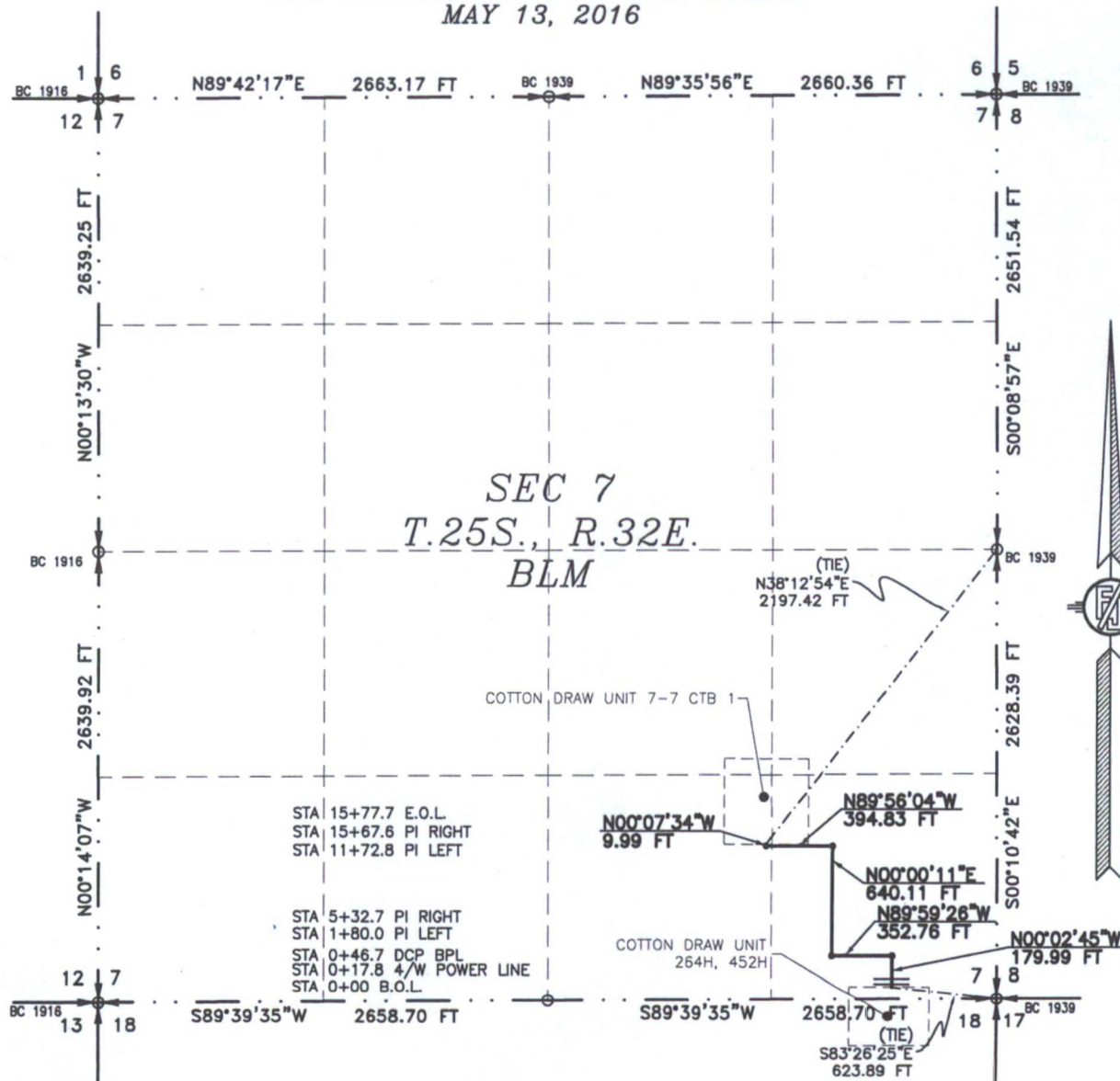
301 SOUTH CANAL  
(575) 234-3341



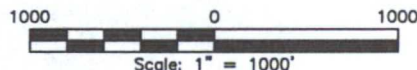
# FLOWLINE PLAT (400658XYZ)

6" GAS LIFT LINE & 6" FLOWLINE FROM COTTON DRAW UNIT 264H & 452H TO THE  
COTTON DRAW UNIT 7-7 CTB 1

DEVON ENERGY PRODUCTION COMPANY, L.P.  
CENTERLINE SURVEY OF A PIPELINE CROSSING  
SECTION 7, TOWNSHIP 25 SOUTH, RANGE 32 EAST, N.M.P.M.  
LEA COUNTY, STATE OF NEW MEXICO  
MAY 13, 2016



SEE NEXT SHEET (2-4) FOR DESCRIPTION



## GENERAL NOTES

- 1.) THE INTENT OF THIS ROUTE SURVEY IS TO ACQUIRE AN EASEMENT.
- 2.) BASIS OF BEARING IS NMSP EAST (NAD83) MODIFIED TO SURFACE COORDINATES. NAD 83 (FEET) AND NAVD 88 (FEET) COORDINATE SYSTEMS USED IN THE SURVEY.

## SURVEYOR CERTIFICATE

I, FILMON F. JARAMILLO, A NEW MEXICO PROFESSIONAL SURVEYOR NO. 12797, HEREBY CERTIFY THAT I HAVE CONDUCTED AND AM RESPONSIBLE FOR THIS SURVEY, THAT THIS SURVEY IS TRUE AND CORRECT TO THE BEST OF MY KNOWLEDGE AND BELIEF, AND THAT THIS SURVEY AND PLAT MEET THE MINIMUM STANDARDS FOR LAND SURVEYING IN THE STATE OF NEW MEXICO.

IN WITNESS WHEREOF, THIS CERTIFICATE IS EXECUTED AT CARLSBAD,  
NEW MEXICO, THIS 23 DAY OF MAY 2016

*[Signature]*  
FILMON F. JARAMILLO PLS. 12797

MADRON SURVEYING, INC.  
301 SOUTH CANAL  
CARLSBAD, NEW MEXICO 88220  
Phone (575) 234-3341

SHEET: 1-4

MADRON SURVEYING, INC. 301 SOUTH CANAL CARLSBAD, NEW MEXICO

SURVEY NO. 4693

**FLOWLINE PLAT (400658XYZ)**

6" GAS LIFT LINE & 6" FLOWLINE FROM COTTON DRAW UNIT 264H & 452H TO THE  
COTTON DRAW UNIT 7-7 CTB 1

**DEVON ENERGY PRODUCTION COMPANY, L.P.  
CENTERLINE SURVEY OF A PIPELINE CROSSING  
SECTION 7, TOWNSHIP 25 SOUTH, RANGE 32 EAST, N.M.P.M.  
LEA COUNTY, STATE OF NEW MEXICO  
MAY 13, 2016**

**DESCRIPTION**

A STRIP OF LAND 30 FEET WIDE CROSSING BUREAU OF LAND MANAGEMENT LAND IN SECTION 7, TOWNSHIP 25 SOUTH, RANGE 32 EAST, N.M.P.M., LEA COUNTY, STATE OF NEW MEXICO AND BEING 15 FEET EACH SIDE OF THE FOLLOWING DESCRIBED CENTERLINE SURVEY:

BEGINNING AT A POINT WITHIN THE SE/4 SE/4 OF SAID SECTION 7, TOWNSHIP 25 SOUTH, RANGE 32 EAST, N.M.P.M., WHENCE THE SOUTHEAST CORNER OF SAID SECTION 7, TOWNSHIP 25 SOUTH, RANGE 32 EAST, N.M.P.M. BEARS S83°26'25"E, A DISTANCE OF 623.89 FEET;

THENCE N00°02'45"W A DISTANCE OF 179.99 FEET TO AN ANGLE POINT OF THE LINE HEREIN DESCRIBED;

THENCE N89°59'26"W A DISTANCE OF 352.76 FEET TO AN ANGLE POINT OF THE LINE HEREIN DESCRIBED;

THENCE N00°00'11"E A DISTANCE OF 640.11 FEET TO AN ANGLE POINT OF THE LINE HEREIN DESCRIBED;

THENCE N89°56'04"W A DISTANCE OF 394.83 FEET TO AN ANGLE POINT OF THE LINE HEREIN DESCRIBED;

THENCE N00°07'34"W A DISTANCE OF 9.99 FEET THE TERMINUS OF THIS CENTERLINE SURVEY, WHENCE THE EAST QUARTER CORNER OF SAID SECTION 7, TOWNSHIP 25 SOUTH, RANGE 32 EAST, N.M.P.M. BEARS N38°12'54"E, A DISTANCE OF 2197.42 FEET;

SAID STRIP OF LAND BEING 1577.68 FEET OR 95.62 RODS IN LENGTH, CONTAINING 1.086 ACRES MORE OR LESS AND BEING ALLOCATED BY FORTIES AS FOLLOWS:

SE/4 SE/4	1532.33 L.F.	92.87 RODS	1.055 ACRES
SW/4 SE/4	45.35 L.F.	2.75 RODS	0.031 ACRES

**SURVEYOR CERTIFICATE**

I, FILIMON F. JARAMILLO, A NEW MEXICO PROFESSIONAL SURVEYOR NO. 12797, HEREBY CERTIFY THAT I HAVE CONDUCTED AND AM RESPONSIBLE FOR THIS SURVEY, THAT THIS SURVEY IS TRUE AND CORRECT TO THE BEST OF MY KNOWLEDGE AND BELIEF, AND THAT THIS SURVEY AND PLAT MEET THE MINIMUM STANDARDS FOR LAND SURVEYING IN THE STATE OF NEW MEXICO.

IN WITNESS WHEREOF THIS CERTIFICATE IS EXECUTED AT CARLSBAD,

NEW MEXICO, THIS 23 DAY OF MAY 2016

**GENERAL NOTES**

1.) THE INTENT OF THIS ROUTE SURVEY IS TO ACQUIRE AN EASEMENT.

2.) BASIS OF BEARING IS NMSP EAST (NAD83) MODIFIED TO SURFACE COORDINATES. NAD 83 (FEET) AND NAVD 88 (FEET) COORDINATE SYSTEMS USED IN THE SURVEY.

**SHEET: 2-4**

**MADRON SURVEYING, INC.** 301 SOUTH CANAL CARLSBAD, NEW MEXICO  
(575) 234-3341

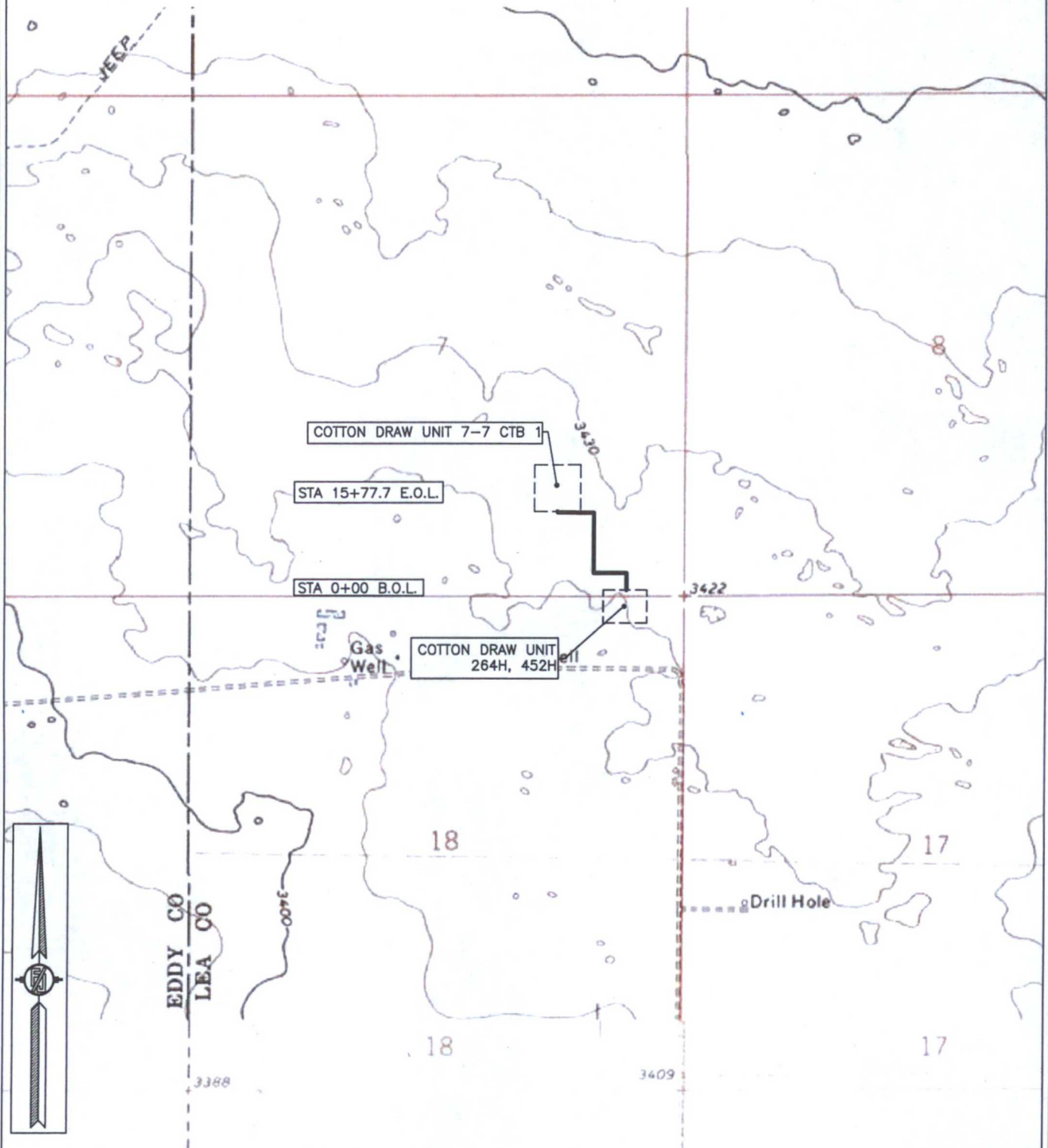
**SURVEY NO. 4693**



**FLOWLINE PLAT (400658XYZ)**

6" GAS LIFT LINE & 6" FLOWLINE FROM COTTON DRAW UNIT 264H & 452H TO THE  
COTTON DRAW UNIT 7-7 CTB 1

DEVON ENERGY PRODUCTION COMPANY, L.P.  
CENTERLINE SURVEY OF A PIPELINE CROSSING  
SECTION 7, TOWNSHIP 25 SOUTH, RANGE 32 EAST, N.M.P.M.  
LEA COUNTY, STATE OF NEW MEXICO  
MAY 13, 2016



SHEET: 3-4

MADRON SURVEYING, INC. 301 SOUTH CANAL (575) 234-3341 CARLSBAD, NEW MEXICO

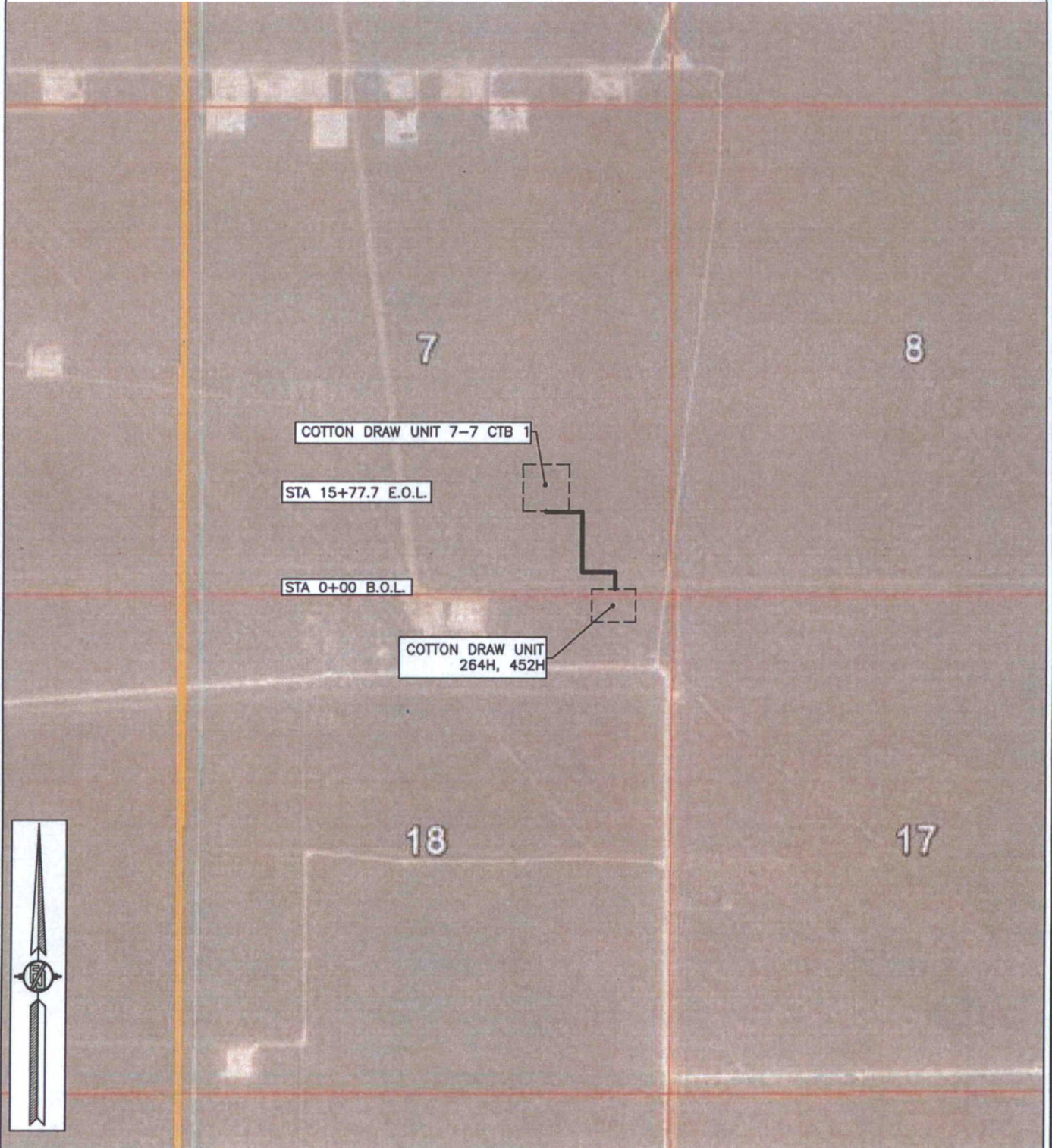
SURVEY NO. 4693



**FLOWLINE PLAT (400658XYZ)**

6" GAS LIFT LINE & 6" FLOWLINE FROM COTTON DRAW UNIT 264H & 452H TO THE  
COTTON DRAW UNIT 7-7 CTB 1

DEVON ENERGY PRODUCTION COMPANY, L.P.  
CENTERLINE SURVEY OF A PIPELINE CROSSING  
SECTION 7, TOWNSHIP 25 SOUTH, RANGE 32 EAST, N.M.P.M.  
LEA COUNTY, STATE OF NEW MEXICO  
MAY 13, 2016



SHEET: 4-4

SURVEY NO. 4693

MADRON SURVEYING, INC. 301 SOUTH CANAL (575) 234-3341 CARLSBAD, NEW MEXICO



