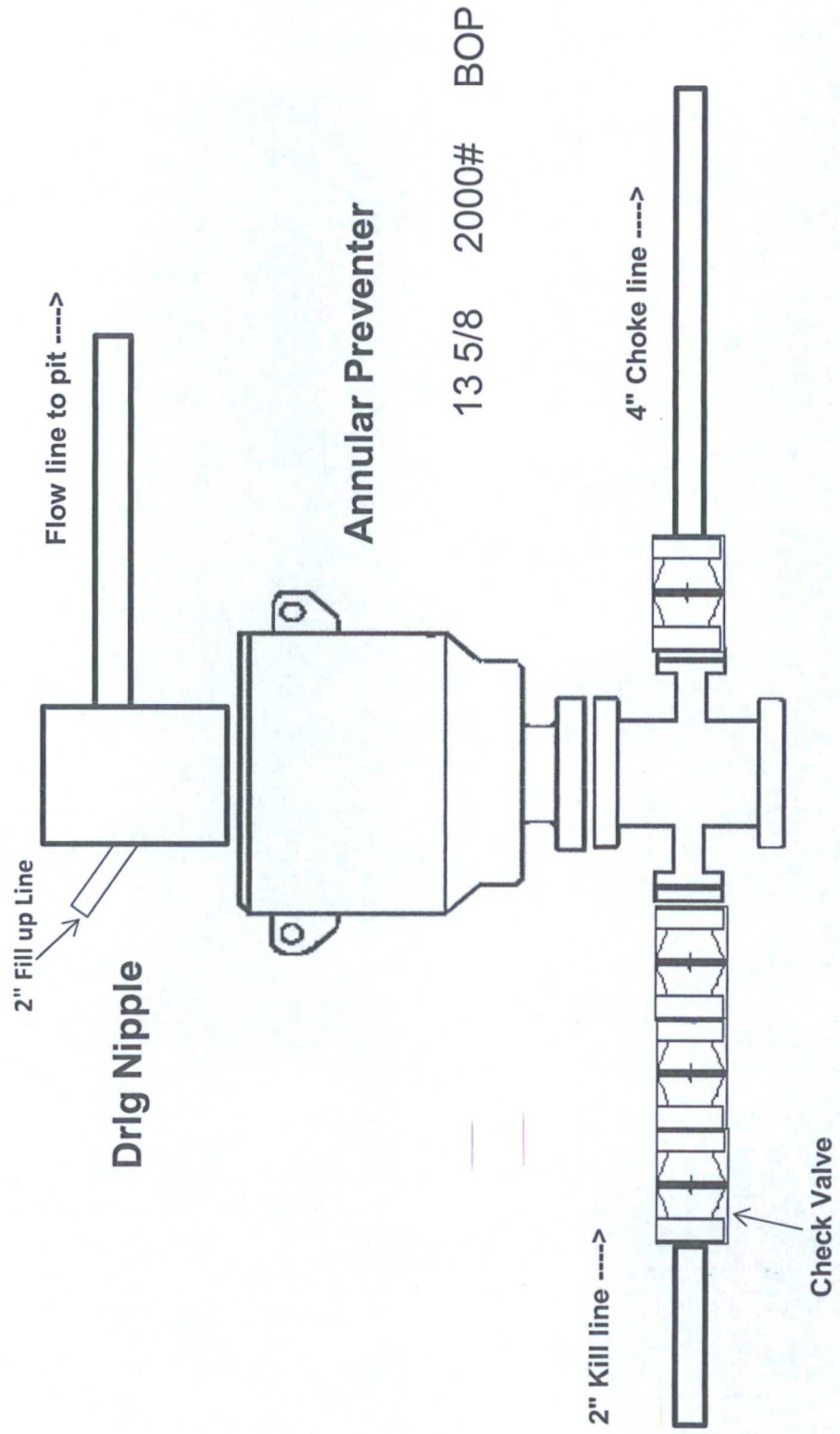
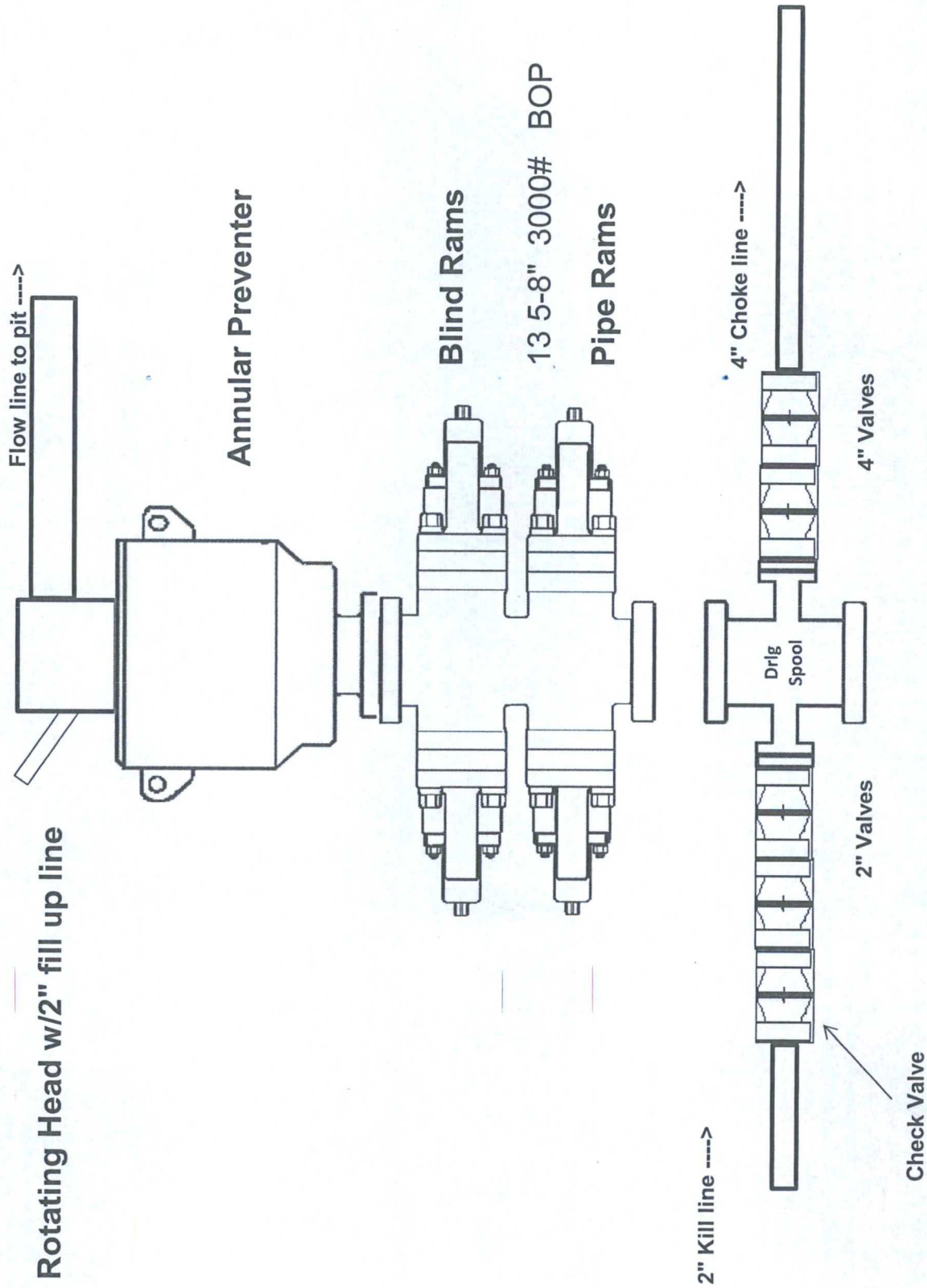


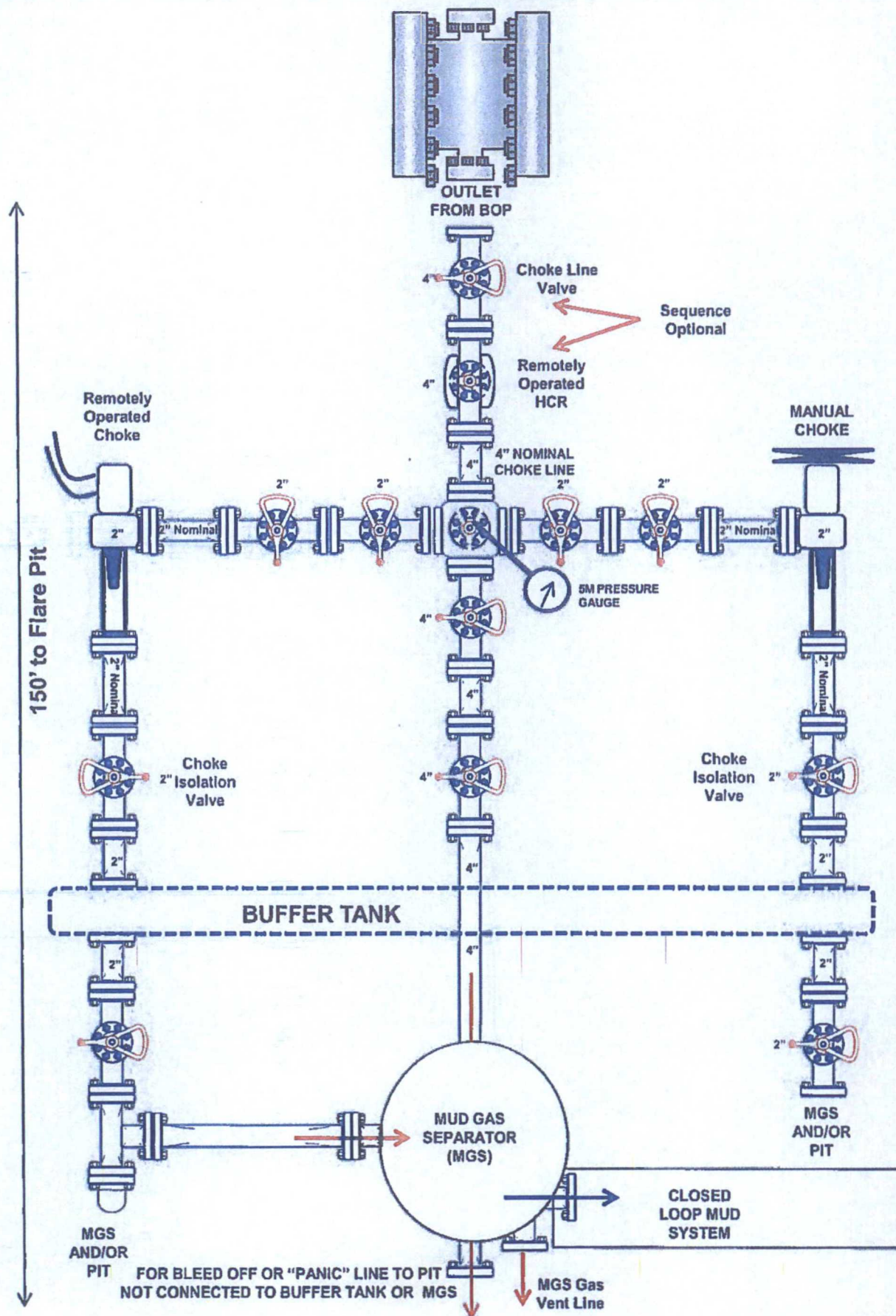
# 2,000 psi BOP Schematic



# 3,000 psi BOP Schematic

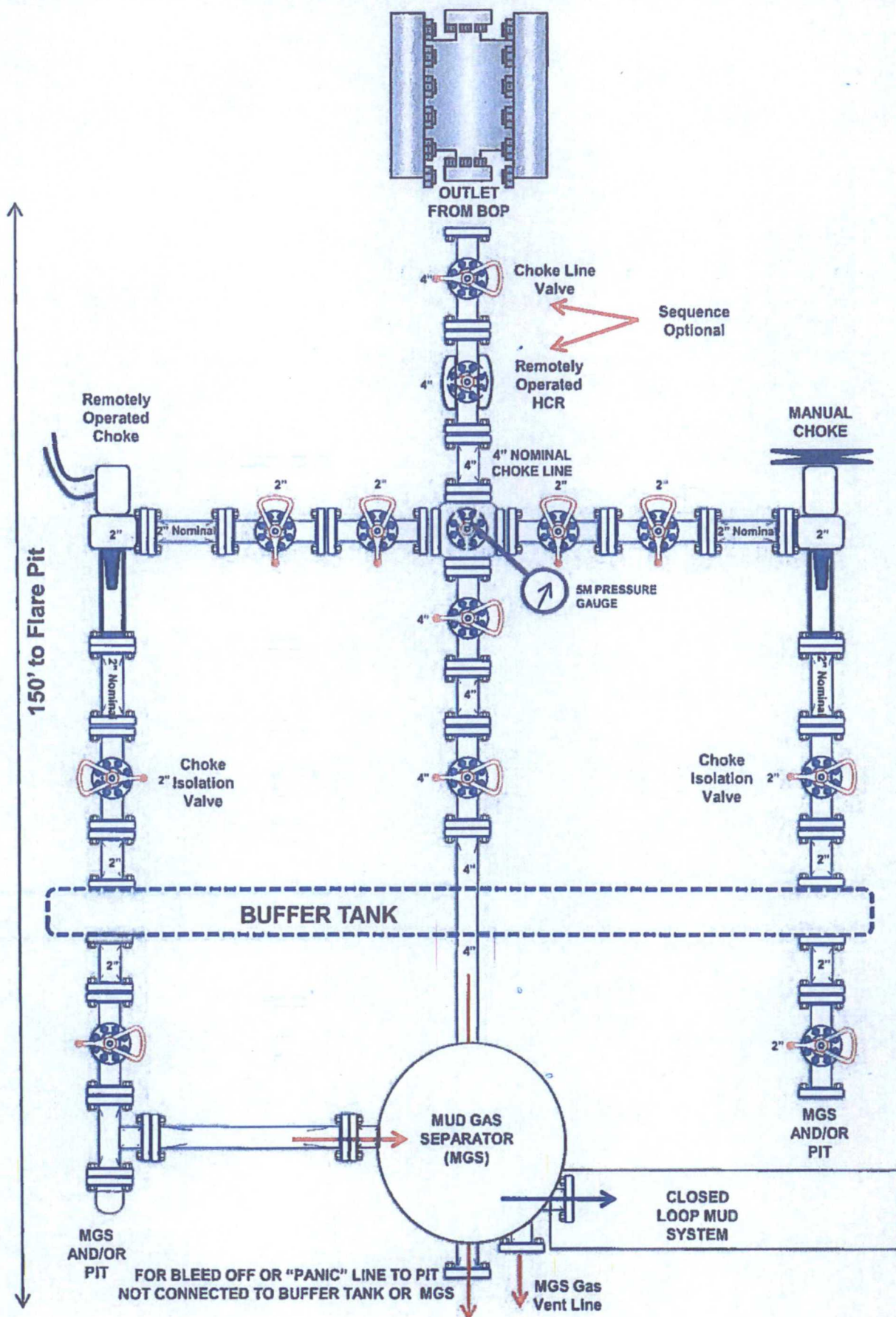


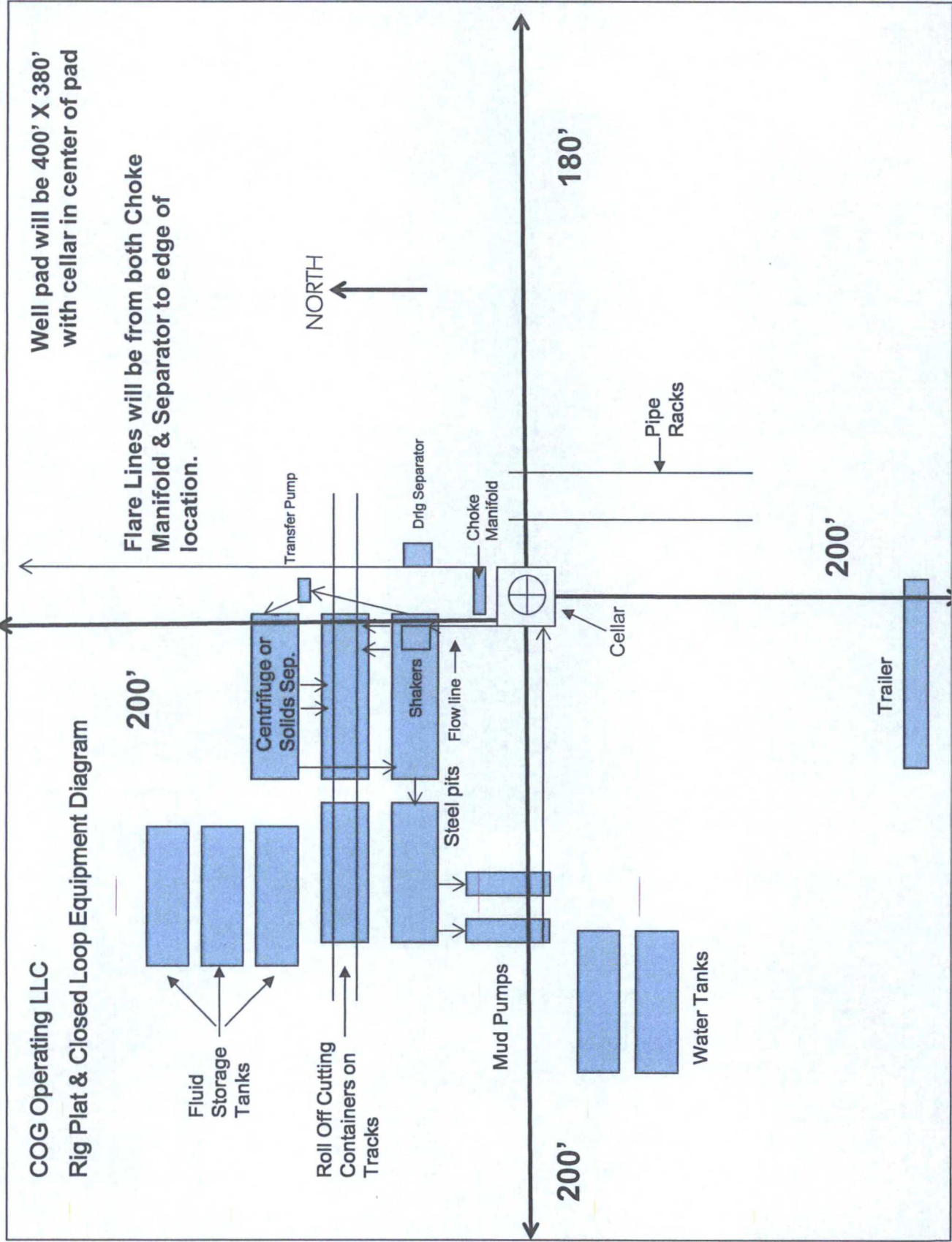
## 2M Choke Manifold Equipment (WITH MGS + CLOSED LOOP)





# 3M Choke Manifold Equipment (WITH MGS + CLOSED LOOP)





"I further certify that COG will comply with Rule 19.15.17 NMAC by using a Closed Loop System."



# COG Operating LLC

## H<sub>2</sub>S Equipment Schematic

Terrain: Shinnery sand hills.

Well pad will be 400' X 380' with cellar in center of pad

