

Submit 1 Copy To Appropriate District Office
District I - (575) 393-6161
1625 N. French Dr., Hobbs, NM 88240
District II - (575) 748-1283
811 S. First St., Artesia, NM 88210
District III - (505) 334-6178
1000 Rio Brazos Rd., Aztec, NM 87410
District IV - (505) 476-3460
1220 S. St. Francis Dr., Santa Fe, NM 87505

State of New Mexico
Energy, Minerals and Natural Resources

Form C-103
Revised July 18, 2013

OIL CONSERVATION DIVISION
1220 South St. Francis Dr.
Santa Fe, NM 87505

WELL API NO.	30-025-36010	✓
5. Indicate Type of Lease	STATE <input checked="" type="checkbox"/> FEE <input type="checkbox"/>	✓
6. State Oil & Gas Lease No.	27816	
7. Lease Name or Unit Agreement Name	STATE "I"	✓
8. Well Number	2	✓
9. OGRID Number	162928	✓
10. Pool name or Wildcat	Saunders, San Andres	✓

SUNDRY NOTICES AND REPORTS ON WELLS
(DO NOT USE THIS FORM FOR PROPOSALS TO DRILL OR TO DEEPEN OR PLUG BACK TO A DIFFERENT RESERVOIR. USE "APPLICATION FOR PERMIT" (FORM C-101) FOR SUCH PROPOSALS.)

1. Type of Well: Oil Well ☒ Gas Well ☐ Other

2. Name of Operator
Energen Resources Corporation

3. Address of Operator
3510 N. "A" St. Bldgs. A&B Midland, TX 79705

4. Well Location
Unit Letter N : 990 feet from the South line and 1650 feet from the West line
Section 4 Township 15-S Range 33-E NMPM County Lea

11. Elevation (Show whether DR, RKB, RT, GR, etc.)

12. Check Appropriate Box to Indicate Nature of Notice, Report or Other Data

NOTICE OF INTENTION TO:

PERFORM REMEDIAL WORK ☐ PLUG AND ABANDON ☒
TEMPORARILY ABANDON ☐ CHANGE PLANS ☐
PULL OR ALTER CASING ☐ MULTIPLE COMPL ☐
DOWNHOLE COMMINGLE ☐
CLOSED-LOOP SYSTEM ☐
OTHER: ☐

SUBSEQUENT I

REMEDIAL WORK ☐
COMMENCE DRILLING OPNS. ☐
CASING/CEMENT JOB ☐

INT TO PA pm ✓
P&A NR -
P&A R -

OTHER:

13. Describe proposed or completed operations. (Clearly state all pertinent details, and give pertinent dates, including estimated date of starting any proposed work). SEE RULE 19.15.7.14 NMAC. For Multiple Completions: Attach wellbore diagram of proposed completion or recompletion.

See attached P&A proposed procedure and well bore diagrams.

THANK YOU!

Thank you

Spud Date:

R

NOTIFY OCD 24 HOURS PRIOR TO BEGINNING
PLUGGING OPERATIONS

I hereby certify that the information above is true and complete to the best of my knowledge and belief.

SIGNATURE Brenda Rathjen TITLE Regulatory Analyst/Energen DATE 06/21/2016

Type or print name Brenda F. Rathjen E-mail address: brathjen@energen.com PHONE: 432-688-3323

For State Use Only

APPROVED BY: Matt Whitaker TITLE Petroleum Engr. Specialist DATE 7/5/2016

Conditions of Approval (if any):

mw

ENERGEN RESOURCES CORPORATION

STATE -I- 2, API # 30-025-36010

AFE # PB15500355, \$150,000

990' FSL & 1650' FWL

Sec. 4, T-15-S, R-33-E

Lea County, NM

The State -I- 2 was spud 10/14/02, and was completed 11/12/02 as a San Andres producer. It has been shut-in since September, 2015. The lease has been abandoned and lost due to lack of production. The well needs to be plugged and abandoned. There is fill in the casing to about 3155' that will have to be cleaned out, adding to the expense of the P&A.

For scope changes during work, stop and discuss with engineering before proceeding

API:	30-025-36010	KB:	4212'	PBTD:	5089'
Spud Date:	10/14/2002	GLE:	4206'	TD:	5135'

Plug and Abandon Procedure

SAFETY CONSIDERATIONS

Observe all Energen Guidelines for PPE and H2S Safety

Observe perforation and contractor safety guidelines

Wireline and explosives on location while perforating

Workstring should be in good condition and tested to 5000 psi.

BOP should be in good working condition and tested

Rig anchors will need to be tested prior to MIRU

Keep a TIW valve open and on the rig floor at all times

Notify the NM OCD 24 hours prior to starting P&A operations

Meet with engineer, superintendents, and consultant prior to beginning the job, to assure that everyone is agreement with the procedure.

- 1 MIRU Well Service Unit.
- 2 NDWH
- 3 NU adapter flange and BOP for 5-1/2" csg and 2-7/8" tubing. Test to 500 psi above working pressure.
- 4 Unload and rack 5,000' 2-7/8" workstring. Maintain kill truck w/10 ppg brine on location.
- 5 RIH with workstring. Circulate hole with mud.
- 6 PU & RIH w/bit, DC's, XO, 2-7/8" workstring and tag fill.
- 7 RU swivel and stripper, test casing, and clean-out fill to below 4900'
- 8 Circulate hole clean, then circulate hole with 10 ppg mud
- 9 Set CIBP @ 4900'
- 10 Dump bail 5 sx cmt or 25 sx through tubing on top CIBP. All cement to be Class "H"
- 11 Spot 25 sx Class "H" cmt @ 3000', base of salt sections
- 12 Spot 25 sx Class "H" cmt @ 2000' top of salt sections
- 13 Spot Class "H" cmt from 507' to surface (shoe). 1600'
- 14 ND BOP. Top off well with cement. RD and clean location.
- 15 Verify cmt to surface all strings.
- 16 Cut off all casing strings at base of cellar or 3' below restored ground level.
- 17 Cover wellbore with metal plate welded in place or with cement cap.
- 18 Erect capped abandonment marker inscribed with well information.
- 19 Cut off dead man anchors and fill in cellar. RDMO.
- 20 Clean and restore location to natural condition and fulfill any and all regulatory requirements.

← spot 25 sx at 4056'
(DV Tool) WOC & TAG
Test csg & report
results

verify cement to surface
all strings.

ENERGEN RESOURCES CORP

State I-2

Spud: 11/14/2002

LEA COUNTY, NM

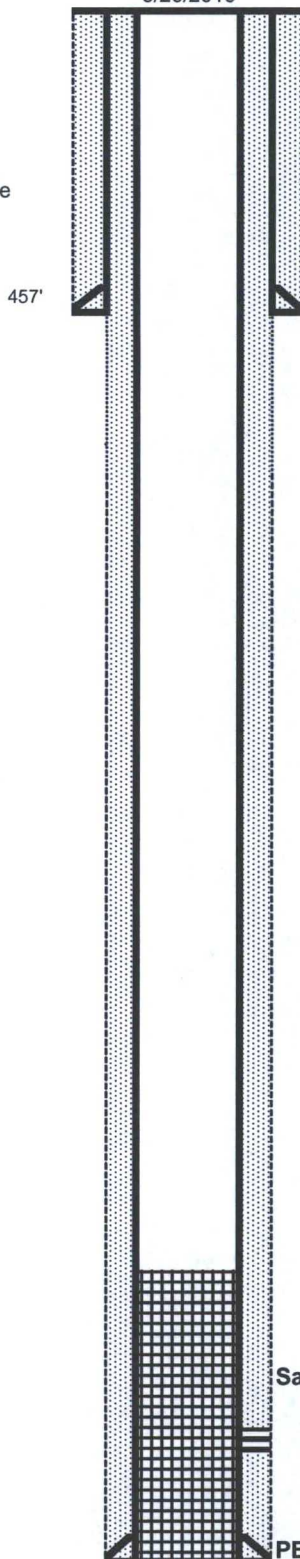
Conductor:
None

Surface Casing:
8-5/8", 24#, J-55 @ 457' in 11" hole
Cemented to surface
with 500 sx "C"
Circulated 159 sx

Intermediate Casing:
none

Production Casing:
5-1/2", 15.5#, J-55 @ 5135'
in 7-7/8" hole w/ 1200 sx "C",
circ 129 sx

Current Condition
5/26/2016



GL Elevation: 4206'

KB Elevation: 4212'

Location: 990' FSL,
1650' FWL
Sec 4, T-15-S, R-33-E
10/14/2002

API : 30-025-36010

Probable casing leak, depth not
known. Lease has been lost,
need to P&A

12/3/15: SI after attempting to clean-out fill.
Fill @ 3105'

San Andres Perfs:

11/06/02: 4942-52' (21 holes)
2 spf, 120" phasing, .45"

PBTD: 5089'

TD: 5135'

DVT001 4006'

T. YATES 2648'

KRP 021816

ENERGEN RESOURCES CORP

State I-2

Spud: 11/14/2002

LEA COUNTY, NM

State I lease, ID 027816

Field:

Saunders; San Andres 96196

Conductor:

None

Surface Casing:

8-5/8", 24#, J-55 @ 457' in 11" hole

Cemented to surface

with 500 sx "C"

Circulated 159 sx

Intermediate Casing:

none

Production Casing:

5-1/2", 15.5#, J-55 @ 5135'

in 7-7/8" hole w/ 1200 sx "C",

circ 129 sx

GL Elevation: 4206'

KB Elevation: 4212'

Location: 990' FSL,

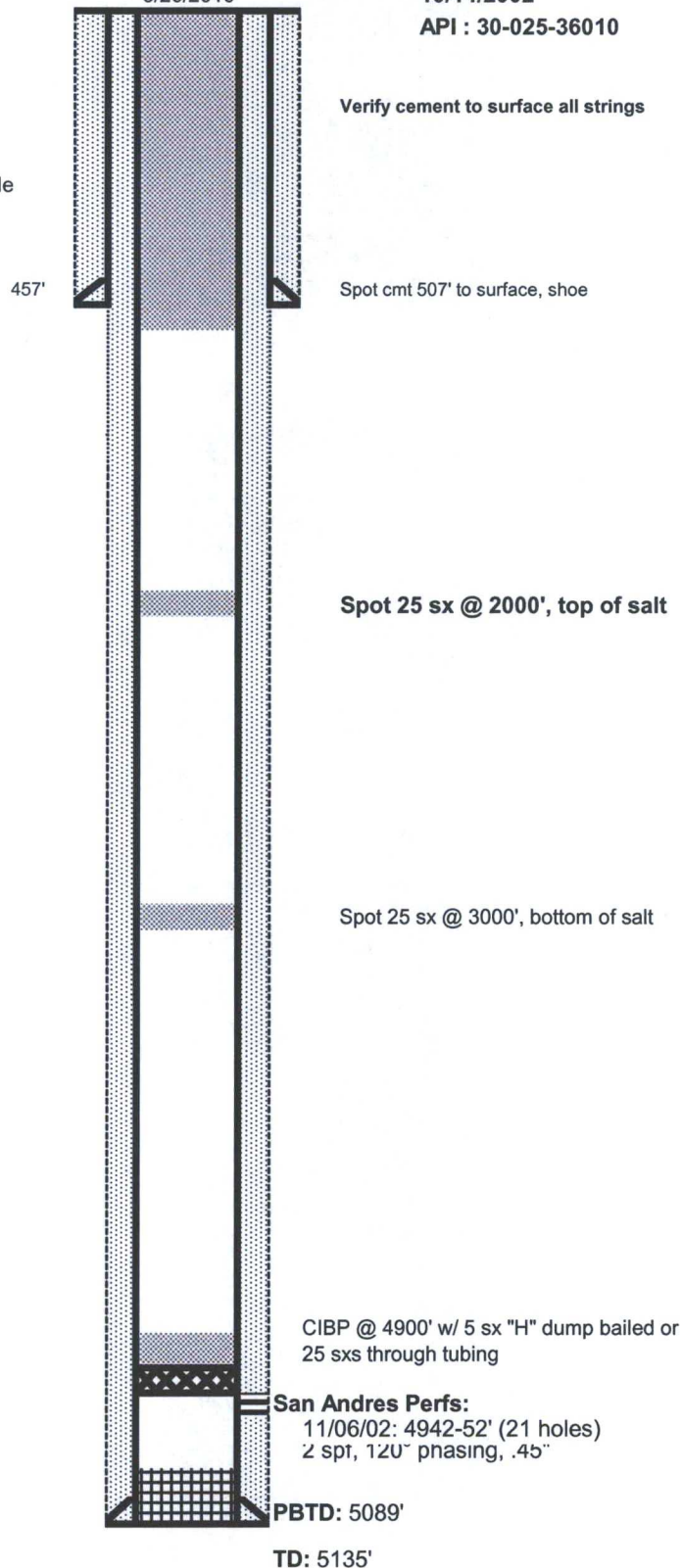
1650' FWL

Sec 4, T-15-S, R-33-E

10/14/2002

API : 30-025-36010

Proposed Condition
5/26/2016



Verify cement to surface all strings

Spot cmt 507' to surface, shoe

Spot 25 sx @ 2000', top of salt

Spot 25 sx @ 3000', bottom of salt

CIBP @ 4900' w/ 5 sx "H" dump bailed or 25 sxs through tubing

San Andres Perfs:
11/06/02: 4942-52' (21 holes)
2 spt, 120" phasing, .45"

PBTD: 5089'

TD: 5135'

KRP 021816