

District I
1625 N. French Dr., Hobbs, NM 88240
Phone: (575) 393-6161 Fax: (575) 393-9720
District II
811 S. First St., Artesia, NM 88210
Phone: (575) 748-1283 Fax: (575) 748-9720
District III
1000 Rio Brazos Road, Aztec, NM 87410
Phone: (505) 334-6178 Fax: (505) 334-6170
District IV
1220 S. St. Francis Dr., Santa Fe, NM 87505
Phone: (505) 476-3460 Fax: (505) 476-3462

State of New Mexico
Energy, Minerals & Natural Resources Department
OIL CONSERVATION DIVISION
1220 South St. Francis Dr.
Santa Fe, NM 87505

Form C-102
Revised August 1, 2011
Submit one copy to appropriate
District Office

JUL 5 2016

☐ AMENDED REPORT

WELL LOCATION AND ACREAGE DEDICATION PLAT

¹ API Number 30-025-43344	² Pool Code 97899	³ Pool Name WC-025 G-06 S253206M; Bone Spring
⁴ Property Code 300635	⁵ Property Name COTTON DRAW UNIT	
⁷ OGRID No. 6137	⁸ Operator Name DEVON ENERGY PRODUCTION COMPANY, L.P.	
		⁹ Well Number 319H
		⁹ Elevation 3431.4

¹⁰ Surface Location									
UL or lot no.	Section	Township	Range	Lot Idn	Feet from the	North/South line	Feet from the	East/West line	County
O	7	25 S	32 E		690	SOUTH	1405	EAST	LEA

¹¹ Bottom Hole Location If Different From Surface									
UL or lot no.	Section	Township	Range	Lot Idn	Feet from the	North/South line	Feet from the	East/West line	County
B	7	25 S	32 E		330	NORTH	1650	EAST	LEA

¹² Dedicated Acres	¹³ Joint or Infill	¹⁴ Consolidation Code	¹⁵ Order No.
160.00			

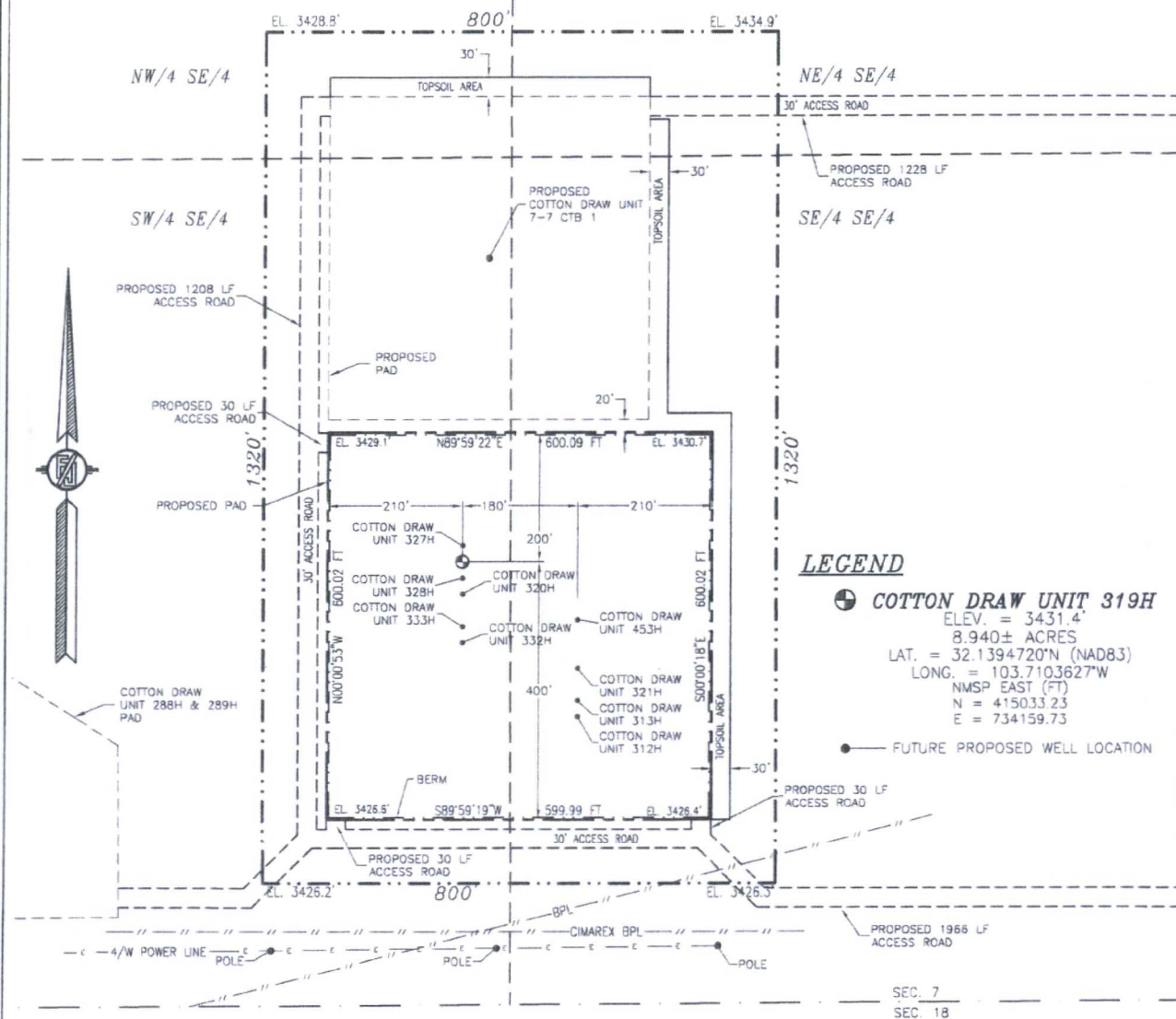
No allowable will be assigned to this completion until all interests have been consolidated or a non-standard unit has been approved by the division.

<p>N89°42'17"E 2663.17 FT</p> <p>NW CORNER SEC. 7 LAT. = 32.1520818°N LONG. = 103.7229772°W NMSP EAST (FT) N = 419598.13 E = 730229.21</p> <p>NOTE: LATITUDE AND LONGITUDE COORDINATES ARE SHOWN USING THE NORTH AMERICAN DATUM OF 1983 (NAD83). LISTED NEW MEXICO STATE PLANE EAST COORDINATES ARE GRID (NAD83). BASIS OF BEARING AND DISTANCES USED ARE NEW MEXICO STATE PLANE EAST COORDINATES MODIFIED TO THE SURFACE.</p> <p>W Q CORNER SEC. 7 LAT. = 32.1448286°N LONG. = 103.7229920°W NMSP EAST (FT) N = 416959.48 E = 730239.58</p> <p>SW CORNER SEC. 7 LAT. = 32.1375735°N LONG. = 103.7230053°W NMSP EAST (FT) N = 414320.16 E = 730250.42</p> <p>S89°39'35"W 2658.70 FT</p>		<p>N89°35'56"E 2660.36 FT</p> <p>N Q CORNER SEC. 7 LAT. = 32.1520777°N LONG. = 103.7143740°W NMSP EAST (FT) N = 419611.85 E = 732891.77</p> <p>NE CORNER SEC. 7 LAT. = 32.1520866°N LONG. = 103.7057799°W NMSP EAST (FT) N = 419630.47 E = 735551.49</p> <p>E Q CORNER SEC. 7 LAT. = 32.1447996°N LONG. = 103.7058075°W NMSP EAST (FT) N = 416979.52 E = 735558.39</p> <p>SE CORNER SEC. 7 LAT. = 32.1375763°N LONG. = 103.7058305°W NMSP EAST (FT) N = 414351.72 E = 735566.57</p> <p>S89°39'35"W 2658.70 FT</p>		<p>¹⁷ OPERATOR CERTIFICATION</p> <p>I hereby certify that the information contained herein is true and complete to the best of my knowledge and belief, and that this organization either owns a working interest or unleased mineral interest in the land including the proposed bottom hole location or has a right to drill this well at this location pursuant to a contract with an owner of such a mineral or working interest, or to a voluntary pooling agreement or a compulsory pooling order heretofore entered by the division.</p> <p><i>Linda Good</i> 4/29/2016 Signature Date</p> <p>Linda Good Printed Name</p> <p>linda.good@dmn.com E-mail Address</p> <p>¹⁸ SURVEYOR CERTIFICATION</p> <p>I hereby certify that the well location shown on this plat was plotted from field notes of actual surveys made by me or under my supervision, and that the same is true and correct to the best of my belief.</p> <p>APRIL 26, 2016 Date of Survey</p> <p><i>Filmon F. Jaramillo</i> Signature and Seal of Professional Surveyor</p> <p>Certificate Number: FILMON F. JARAMILLO, PLS 12797 SURVEY NO. 4292A</p>
---	--	---	--	--

SECTION 7, TOWNSHIP 25 SOUTH, RANGE 32 EAST, N.M.P.M.
LEA COUNTY, STATE OF NEW MEXICO

SITE MAP

NOTE: LATITUDE AND LONGITUDE COORDINATES ARE SHOWN USING THE NORTH AMERICAN DATUM OF 1983 (NAD83). LISTED NEW MEXICO STATE PLANE EAST COORDINATES ARE GRID (NAD83). BASIS OF BEARING AND DISTANCES USED ARE NEW MEXICO STATE PLANE EAST COORDINATES MODIFIED TO THE SURFACE



LEGEND

⊕ COTTON DRAW UNIT 319H
ELEV. = 3431.4'
8.940± ACRES
LAT. = 32.1394720°N (NAD83)
LONG. = 103.7103627°W
NMSP EAST (FT)
N = 415033.23
E = 734159.73

● FUTURE PROPOSED WELL LOCATION

0.25 125 250 500
SCALE 1" = 250'

DIRECTIONS TO LOCATION

FROM THE INTERSECTION OF STATE HIGHWAY 128 & CR 1 (ORLA HIGHWAY) GO SOUTH ON CR 1 APPROX. 6.2 MILES TO MONSANTO ROAD ON RIGHT (WEST). TURN WEST ON MONSANTO ROAD GO APPROX. 2.1 MILES ROAD TURNS RIGHT (NORTH). GO NORTH APPROX. 0.9 MILE ROAD TURNS LEFT (WEST). GO WEST APPROX. 25'. TURN RIGHT (NORTH) GO NORTH APPROX. 954' TO A PROPOSED ROAD LATH ON LEFT (WEST). FOLLOW PROPOSED ROAD LATHS WEST APPROX. 887'. THEN NORTHWEST 132'. THEN 30' NORTH (TOTAL OF 1049') TO THE SOUTHEAST PAD CORNER FOR THIS LOCATION.

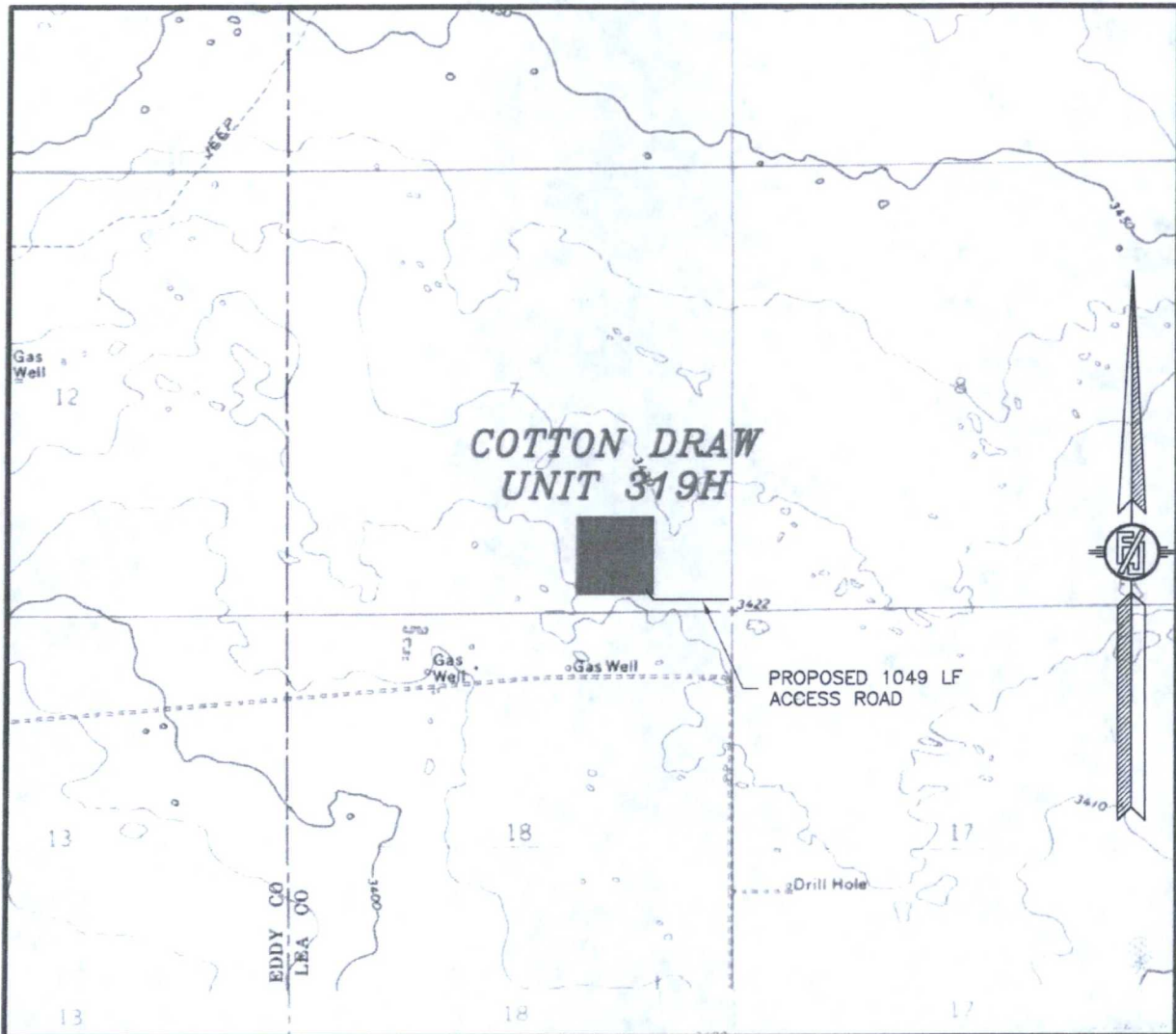
DEVON ENERGY PRODUCTION COMPANY, L.P.
COTTON DRAW UNIT 319H
LOCATED 690 FT. FROM THE SOUTH LINE
AND 1405 FT. FROM THE EAST LINE OF
SECTION 7, TOWNSHIP 25 SOUTH,
RANGE 32 EAST, N.M.P.M.
LEA COUNTY, STATE OF NEW MEXICO

APRIL 26, 2016

SURVEY NO. 4292A

MADRON SURVEYING, INC. 301 SOUTH CANAL CARLSBAD, NEW MEXICO
(575) 234-3341

SECTION 7, TOWNSHIP 25 SOUTH, RANGE 32 EAST, N.M.P.M.
LEA COUNTY, STATE OF NEW MEXICO
LOCATION VERIFICATION MAP



USGS QUAD MAP:
PADUCA BREAKS WEST
PADUCA BREAKS NW

NOT TO SCALE

DEVON ENERGY PRODUCTION COMPANY, L.P.
COTTON DRAW UNIT 319H

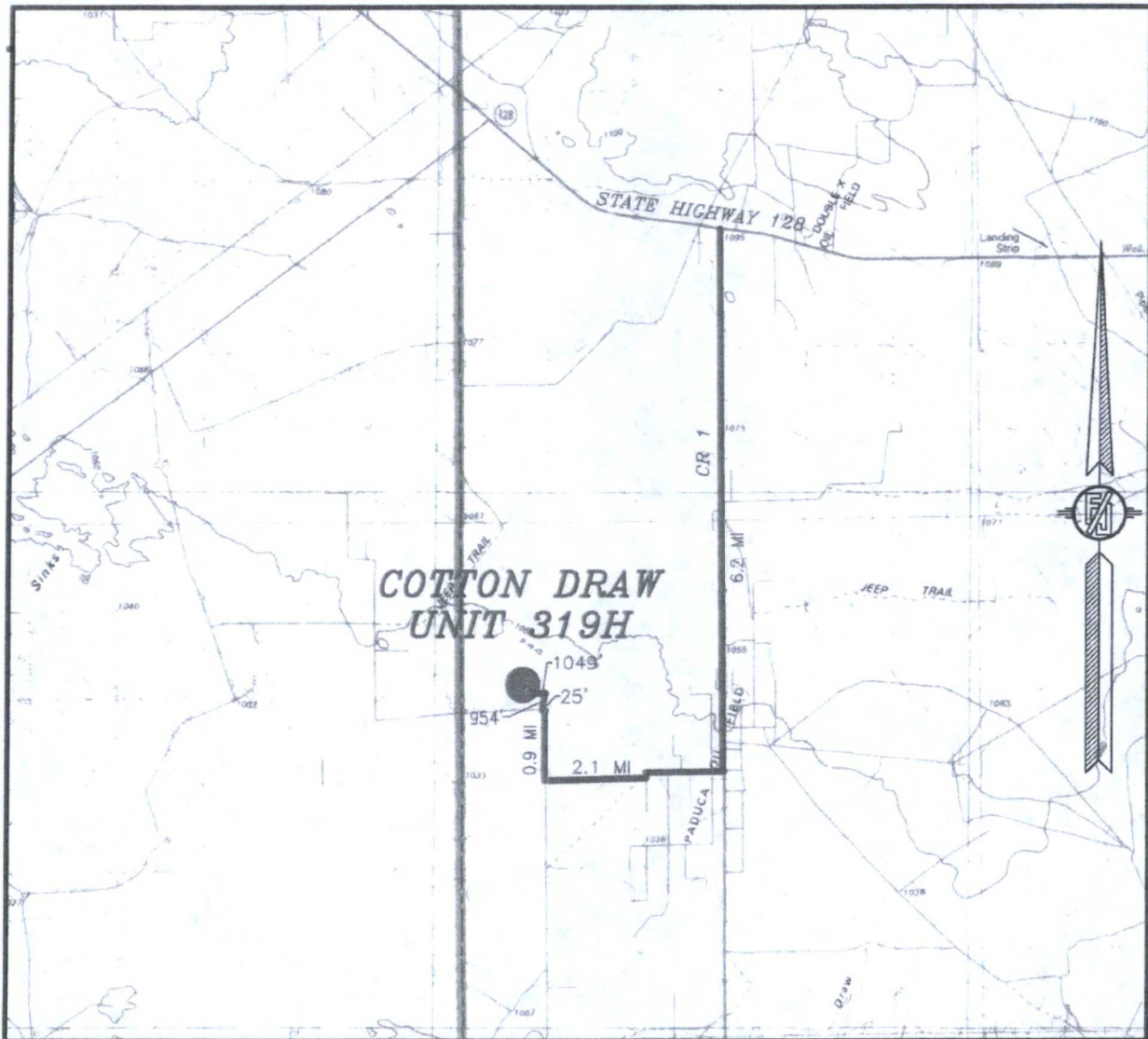
LOCATED 690 FT. FROM THE SOUTH LINE
AND 1405 FT. FROM THE EAST LINE OF
SECTION 7, TOWNSHIP 25 SOUTH,
RANGE 32 EAST, N.M.P.M.
LEA COUNTY, STATE OF NEW MEXICO

APRIL 26, 2016

SURVEY NO. 4292A

MADRON SURVEYING, INC. 301 SOUTH CANAL (575) 234-1341 CARLSBAD, NEW MEXICO

SECTION 7, TOWNSHIP 25 SOUTH, RANGE 32 EAST, N.M.P.M.
LEA COUNTY, STATE OF NEW MEXICO
VICINITY MAP



DISTANCES IN MILES

NOT TO SCALE

DEVON ENERGY PRODUCTION COMPANY, L.P.
COTTON DRAW UNIT 319H

LOCATED 690 FT. FROM THE SOUTH LINE
AND 1405 FT. FROM THE EAST LINE OF
SECTION 7, TOWNSHIP 25 SOUTH,
RANGE 32 EAST, N.M.P.M.
LEA COUNTY, STATE OF NEW MEXICO

APRIL 26, 2016

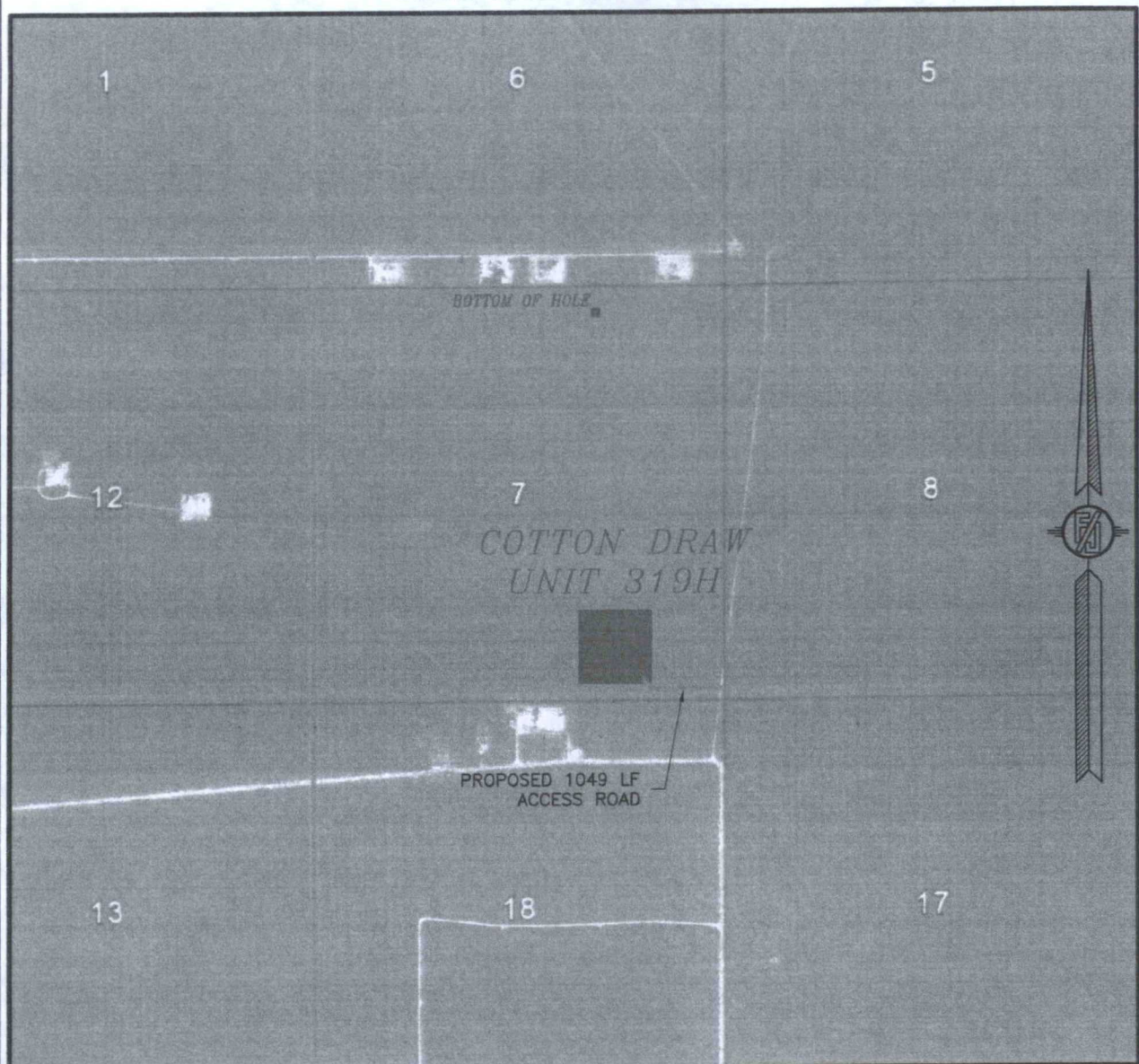
DIRECTIONS TO LOCATION

FROM THE INTERSECTION OF STATE HIGHWAY 128 & CR 1 (ORLA HIGHWAY) GO SOUTH ON CR 1 APPROX. 6.2 MILES TO MONSANTO ROAD ON RIGHT (WEST). TURN WEST ON MONSANTO ROAD GO APPROX. 2.1 MILES ROAD TURNS RIGHT (NORTH). GO NORTH APPROX. 0.9 MILE ROAD TURNS LEFT (WEST). GO WEST APPROX. 25'. TURN RIGHT (NORTH) GO NORTH APPROX. 954' TO A PROPOSED ROAD LATH ON LEFT (WEST). FOLLOW PROPOSED ROAD LATHS WEST APPROX. 887', THEN NORTHWEST 132', THEN 30' NORTH (TOTAL OF 1049') TO THE SOUTHEAST PAD CORNER FOR THIS LOCATION.

SURVEY NO. 4292A

MADRON SURVEYING, INC. 301 SOUTH CANAL (575) 234-3341 CARLSBAD, NEW MEXICO

SECTION 7, TOWNSHIP 25 SOUTH, RANGE 32 EAST, N.M.P.M.
LEA COUNTY, STATE OF NEW MEXICO
AERIAL PHOTO



NOT TO SCALE
AERIAL PHOTO:
GOOGLE EARTH
FEBRUARY 2014

DEVON ENERGY PRODUCTION COMPANY, L.P.
COTTON DRAW UNIT 319H

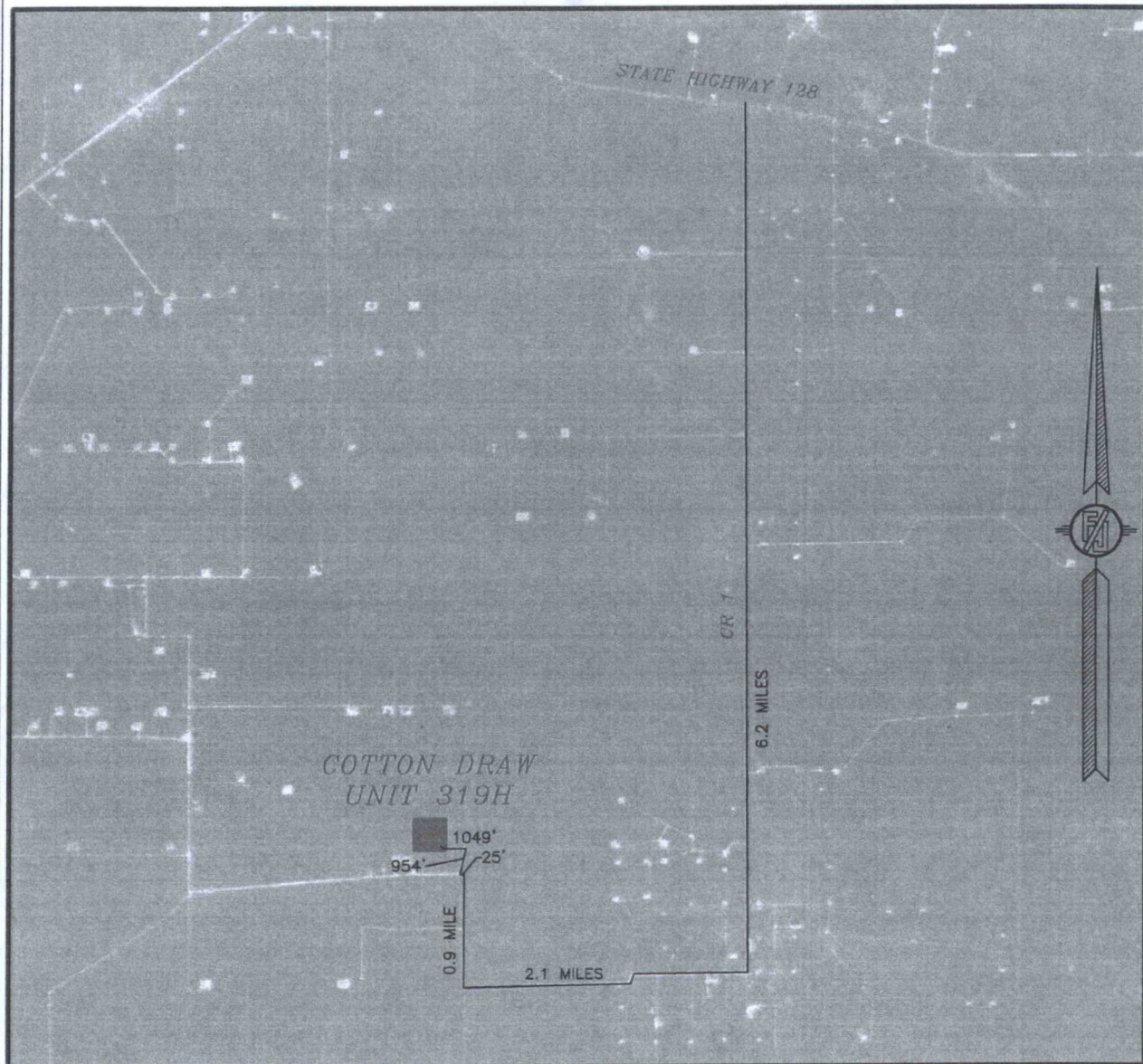
LOCATED 690 FT. FROM THE SOUTH LINE
AND 1405 FT. FROM THE EAST LINE OF
SECTION 7, TOWNSHIP 25 SOUTH,
RANGE 32 EAST, N.M.P.M.
LEA COUNTY, STATE OF NEW MEXICO

APRIL 26, 2016

SURVEY NO. 4292A

MADRON SURVEYING, INC. 301 SOUTH CANAL (575) 234-3341 CARLSBAD, NEW MEXICO

SECTION 7, TOWNSHIP 25 SOUTH, RANGE 32 EAST, N.M.P.M.
LEA COUNTY, STATE OF NEW MEXICO
ACCESS AERIAL ROUTE MAP



NOT TO SCALE
AERIAL PHOTO:
GOOGLE EARTH
FEBRUARY 2014

DEVON ENERGY PRODUCTION COMPANY, L.P.

COTTON DRAW UNIT 319H

LOCATED 690 FT. FROM THE SOUTH LINE
AND 1405 FT. FROM THE EAST LINE OF
SECTION 7, TOWNSHIP 25 SOUTH,
RANGE 32 EAST, N.M.P.M.
LEA COUNTY, STATE OF NEW MEXICO

APRIL 26, 2016

SURVEY NO. 4292A

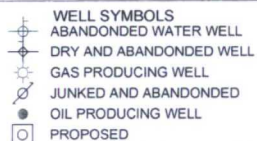
MADRON SURVEYING, INC. 301 SOUTH CANAL (575) 234-3341 CARLSBAD, NEW MEXICO

Estimated distances to nearest wellbores:

7



One Mile Radius Map



January 26, 2016

