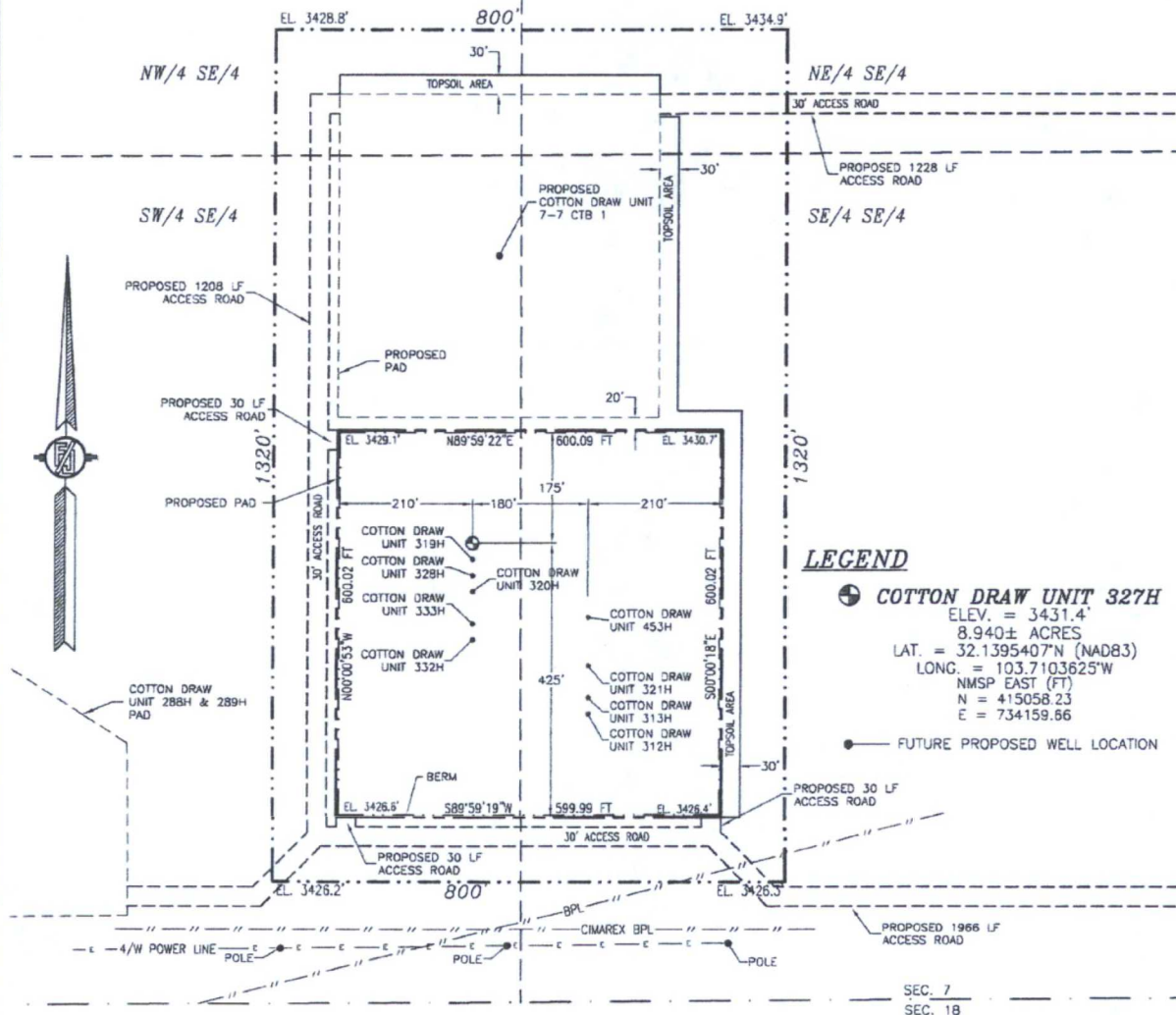


SECTION 7, TOWNSHIP 25 SOUTH, RANGE 32 EAST, N.M.P.M.
LEA COUNTY, STATE OF NEW MEXICO

SITE MAP

NOTE: LATITUDE AND LONGITUDE COORDINATES ARE SHOWN USING THE NORTH AMERICAN DATUM OF 1983 (NAD83). LISTED NEW MEXICO STATE PLANE EAST COORDINATES ARE GRID (NAD83). BASIS OF BEARING AND DISTANCES USED ARE NEW MEXICO STATE PLANE EAST COORDINATES MODIFIED TO THE SURFACE



0.25 125 250 500
SCALE 1" = 250'

DIRECTIONS TO LOCATION

FROM THE INTERSECTION OF STATE HIGHWAY 128 & CR 1 (ORLA HIGHWAY) GO SOUTH ON CR 1 APPROX. 5.2 MILES TO MONSANTO ROAD ON RIGHT (WEST). TURN WEST ON MONSANTO ROAD GO APPROX. 2.1 MILES ROAD TURNS RIGHT (NORTH). GO NORTH APPROX. 0.9 MILE ROAD TURNS LEFT (WEST). GO WEST APPROX. 25'. TURN RIGHT (NORTH) GO NORTH APPROX. 954' TO A PROPOSED ROAD LATH ON LEFT (WEST). FOLLOW PROPOSED ROAD LATHS WEST APPROX. 887', THEN NORTHWEST 132', THEN 30' NORTH (TOTAL OF 1049') TO THE SOUTHEAST PAD CORNER FOR THIS LOCATION.

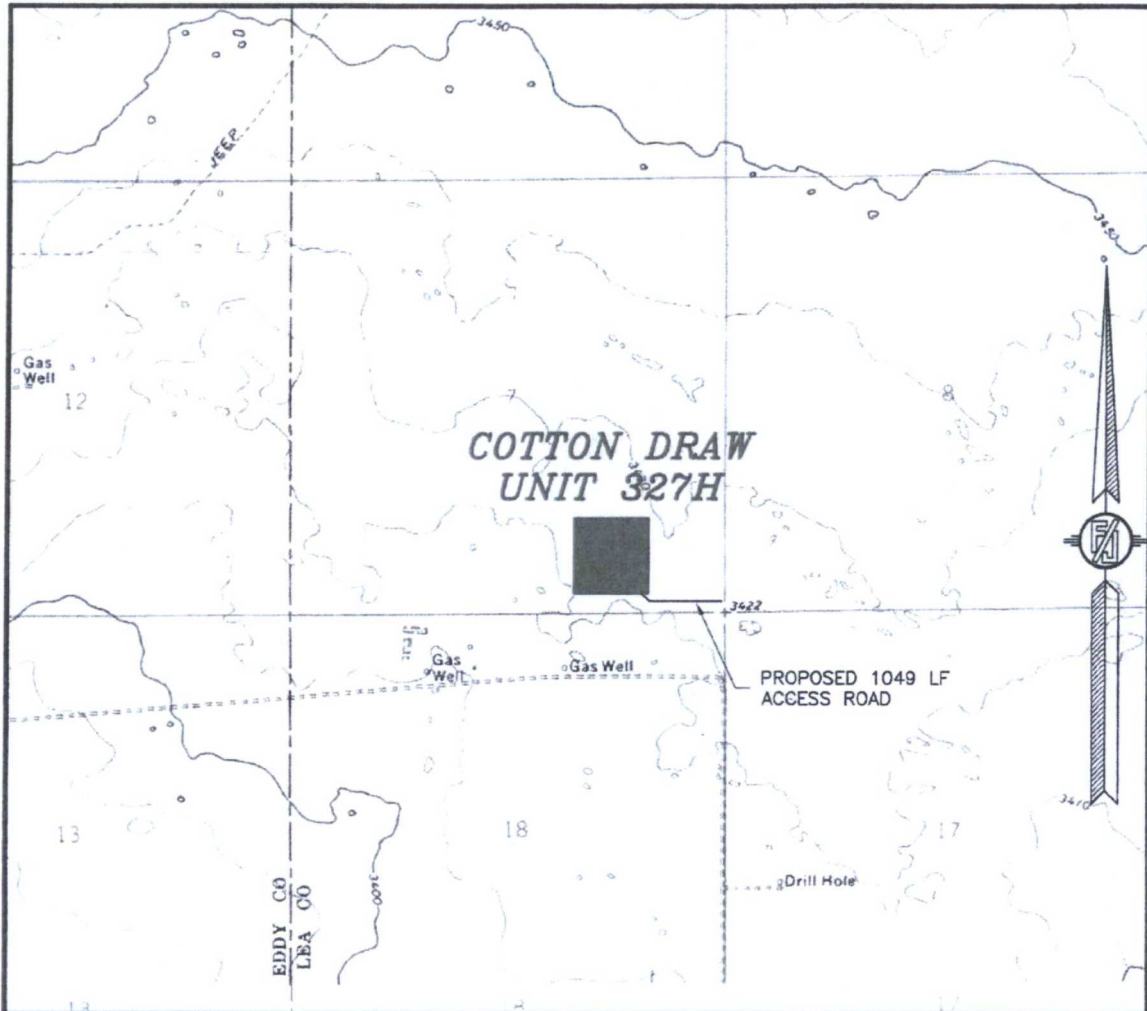
DEVON ENERGY PRODUCTION COMPANY, L.P.
COTTON DRAW UNIT 327H
LOCATED 715 FT. FROM THE SOUTH LINE
AND 1405 FT. FROM THE EAST LINE OF
SECTION 7, TOWNSHIP 25 SOUTH,
RANGE 32 EAST, N.M.P.M.
LEA COUNTY, STATE OF NEW MEXICO

APRIL 26, 2016

SURVEY NO. 4295B

MADRON SURVEYING, INC. 301 SOUTH CANAL (575) 234-3341 CARLSBAD, NEW MEXICO

SECTION 7, TOWNSHIP 25 SOUTH, RANGE 32 EAST, N.M.P.M.
LEA COUNTY, STATE OF NEW MEXICO
LOCATION VERIFICATION MAP



USGS QUAD MAP:
PADUCA BREAKS WEST
PADUCA BREAKS NW

NOT TO SCALE

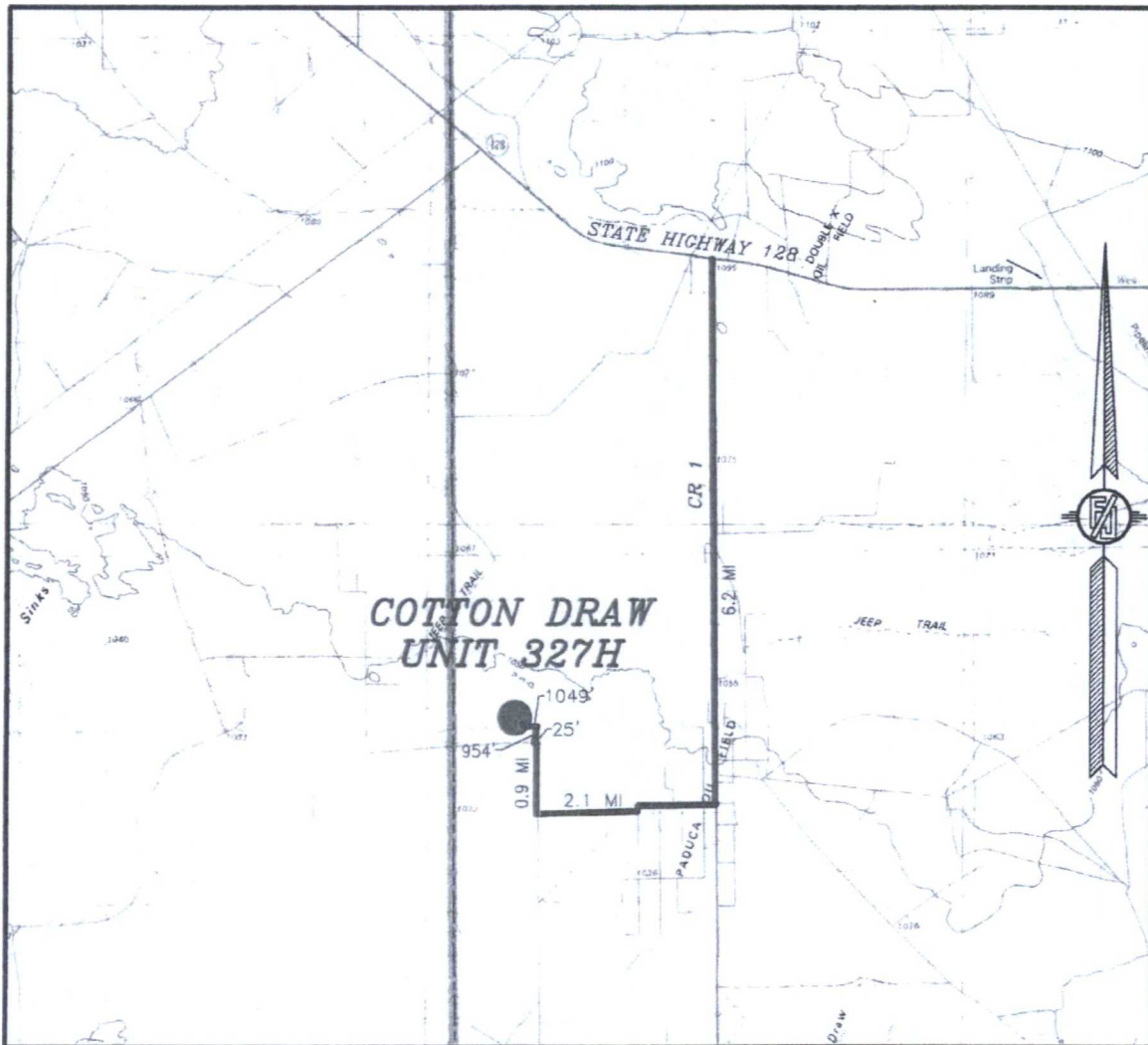
DEVON ENERGY PRODUCTION COMPANY, L.P.
COTTON DRAW UNIT 327H
LOCATED 715 FT. FROM THE SOUTH LINE
AND 1405 FT. FROM THE EAST LINE OF
SECTION 7, TOWNSHIP 25 SOUTH,
RANGE 32 EAST, N.M.P.M.
LEA COUNTY, STATE OF NEW MEXICO

APRIL 26, 2016

SURVEY NO. 4295B

MADRON SURVEYING, INC. 301 SOUTH CANAL (575) 234-3341 CARLSBAD, NEW MEXICO

SECTION 7, TOWNSHIP 25 SOUTH, RANGE 32 EAST, N.M.P.M.
LEA COUNTY, STATE OF NEW MEXICO
VICINITY MAP



DISTANCES IN MILES

NOT TO SCALE

DEVON ENERGY PRODUCTION COMPANY, L.P.

COTTON DRAW UNIT 327H

LOCATED 715 FT. FROM THE SOUTH LINE
AND 1405 FT. FROM THE EAST LINE OF

SECTION 7, TOWNSHIP 25 SOUTH,

RANGE 32 EAST, N.M.P.M.

LEA COUNTY, STATE OF NEW MEXICO

APRIL 26, 2016

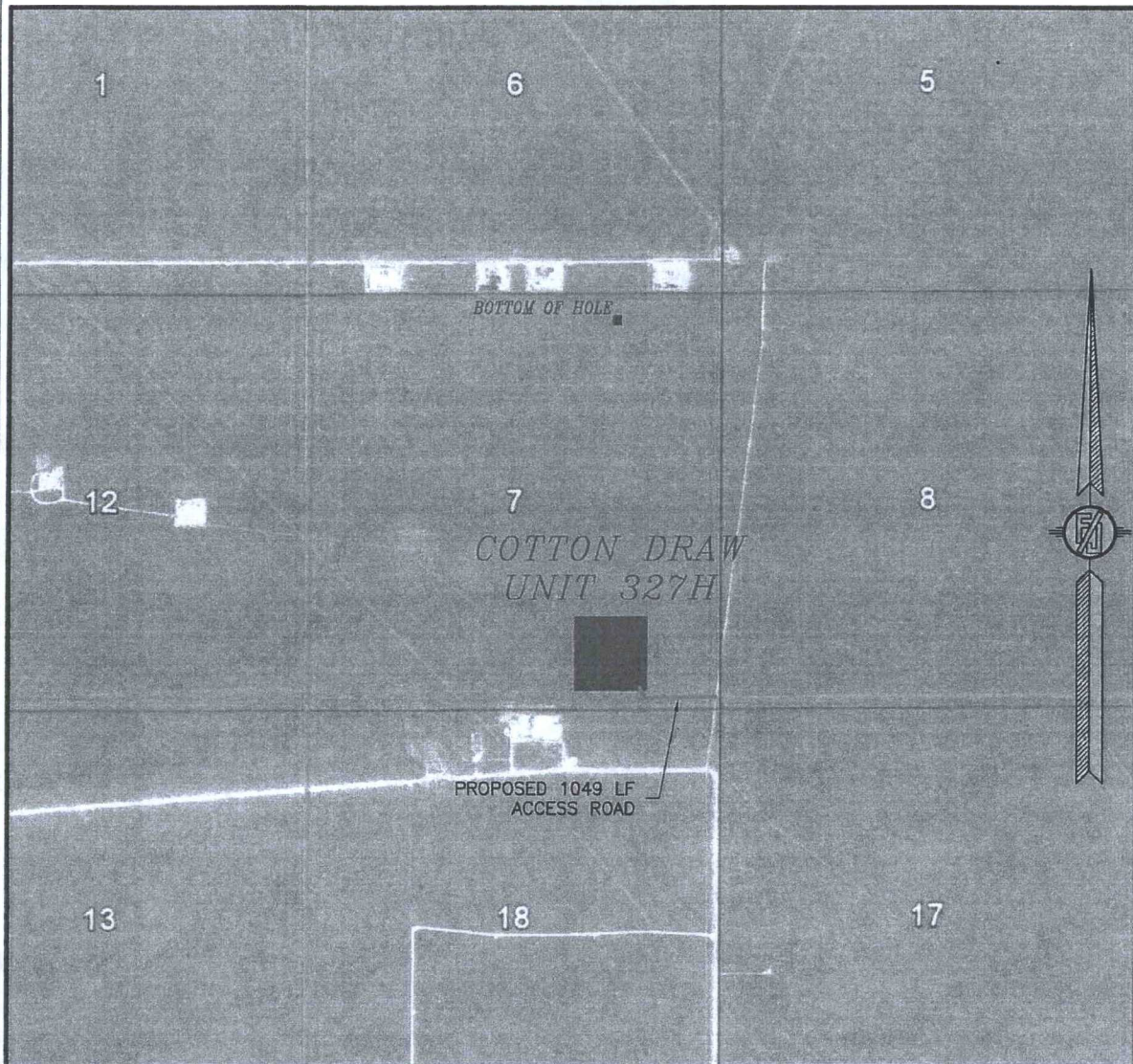
DIRECTIONS TO LOCATION

FROM THE INTERSECTION OF STATE HIGHWAY 128 & CR 1 (ORLA HIGHWAY) GO SOUTH ON CR 1 APPROX. 6.2 MILES TO MONSANTO ROAD ON RIGHT (WEST). TURN WEST ON MONSANTO ROAD GO APPROX. 2.1 MILES ROAD TURNS RIGHT (NORTH). GO NORTH APPROX. 0.9 MILE ROAD TURNS LEFT (WEST). GO WEST APPROX. 25'. TURN RIGHT (NORTH) GO NORTH APPROX. 954' TO A PROPOSED ROAD LATH ON LEFT (WEST). FOLLOW PROPOSED ROAD LATHS WEST APPROX. 887', THEN NORTHWEST 132', THEN 30' NORTH (TOTAL OF 1049') TO THE SOUTHEAST PAD CORNER FOR THIS LOCATION.

SURVEY NO. 4295B

MADRON SURVEYING, INC. 301 SOUTH CANAL (575) 234-3341 CARLSBAD, NEW MEXICO

SECTION 7, TOWNSHIP 25 SOUTH, RANGE 32 EAST, N.M.P.M.
LEA COUNTY, STATE OF NEW MEXICO
AERIAL PHOTO



NOT TO SCALE
AERIAL PHOTO:
GOOGLE EARTH
FEBRUARY 2014

DEVON ENERGY PRODUCTION COMPANY, L.P.
COTTON DRAW UNIT 327H
LOCATED 715 FT. FROM THE SOUTH LINE
AND 1405 FT. FROM THE EAST LINE OF
SECTION 7, TOWNSHIP 25 SOUTH,
RANGE 32 EAST, N.M.P.M.
LEA COUNTY, STATE OF NEW MEXICO

APRIL 26, 2016

SURVEY NO. 4295B

MADRON SURVEYING, INC. 301 SOUTH CANAL (575) 234-3341 CARLSBAD, NEW MEXICO

SECTION 7, TOWNSHIP 25 SOUTH, RANGE 32 EAST, N.M.P.M.
LEA COUNTY, STATE OF NEW MEXICO
ACCESS AERIAL ROUTE MAP



NOT TO SCALE
AERIAL PHOTO:
GOOGLE EARTH
FEBRUARY 2014

DEVON ENERGY PRODUCTION COMPANY, L.P.
COTTON DRAW UNIT 327H
LOCATED 715 FT. FROM THE SOUTH LINE
AND 1405 FT. FROM THE EAST LINE OF
SECTION 7, TOWNSHIP 25 SOUTH,
RANGE 32 EAST, N.M.P.M.
LEA COUNTY, STATE OF NEW MEXICO

APRIL 26, 2016

SURVEY NO. 4295B

MADRON SURVEYING, INC. 301 SOUTH CANAL (575) 234-3341 CARLSBAD, NEW MEXICO

One Mile Radius Map

Estimated distances to nearest wellbores:

*From SHL: Cotton Draw Unit 252H	535 ft W
Trionyx 6 Fed 8H	860 ft NW
Trionyx 6 Fed 7H	820 ft NW
Trionyx 6 Fed 6H	700 ft NW
*From BHL: Cotton draw Unit 252H	325 ft NW

25S 32E

12

6

5

7

8

18

17

devon

Cotton Draw Unit 327H

One Mile Radius Map

0 2,003
FEET

WELL SYMBOLS
 ABANDONED WATER WELL
 DRY AND ABANDONED WELL
 GAS PRODUCING WELL
 JUNKED AND ABANDONED
 OIL PRODUCING WELL
 PROPOSED

January 27, 2016

